

T2N, R65W, 6th P.M.

2000 Private Alum.
Cap, 0.6' Below Ground
Lat: 40.145958°
Long: 104.697269°

2001 Alum. Cap
0.6' Below Ground
LS #25937
Lat: 40.145961°
Long: 104.687831°

1999 Alum. Cap
0.8' Below Ground
PLS #28650
Lat: 40.145958°
Long: 104.678394°

GREAT WESTERN OIL & GAS COMPANY

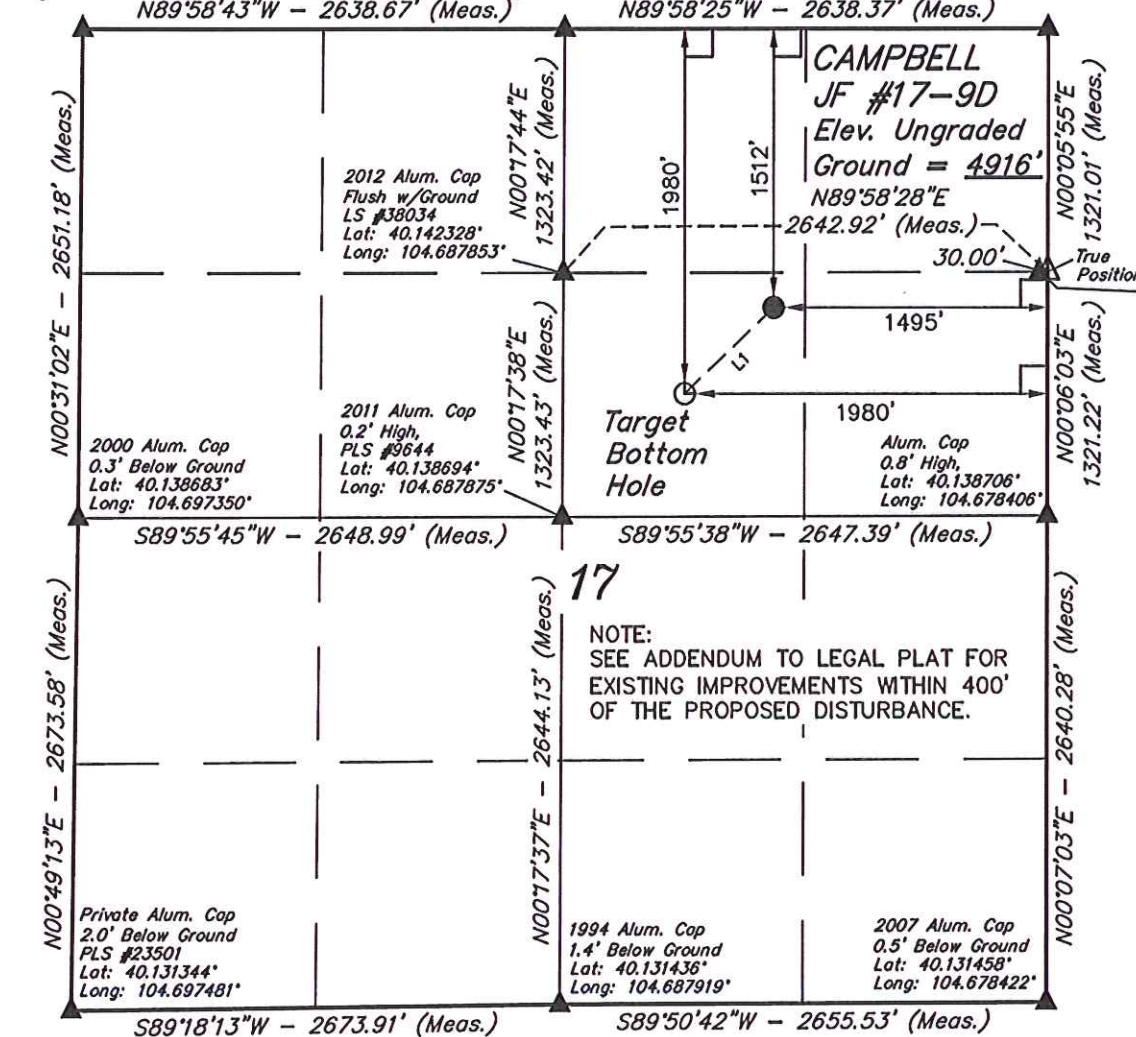
Well location, CAMPBELL JF #17-9D, located as shown in the SW 1/4 NE 1/4 of Section 17, T2N, R65W, 6th P.M., Weld County, Colorado.

BASIS OF ELEVATION

USGS COOPERATIVE BASE NETWORK CONTROL STATION, DESIGNATION 'HUDSON'. NGS DATA SHEET LISTS THE NAVD 88 ELEVATION AS BEING 4999 FEET

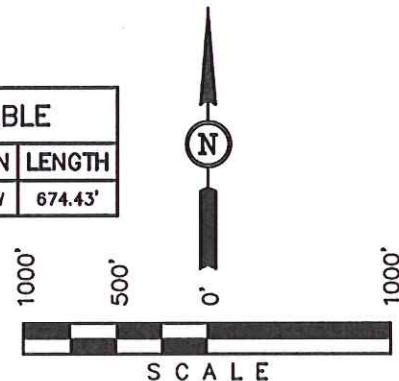
BASIS OF BEARINGS

BASIS OF BEARINGS IS A G.P.S. OBSERVATION.



W.C. 2012 Alum. Cap
Flush w/Ground
LS #38034
Lat: 40.142333°
Long: 104.678508°

LINE TABLE		
LINE	DIRECTION	LENGTH
L1	S46°08'14"W	674.43'



CERTIFICATE

THIS IS TO CERTIFY THAT THE ABOVE PLAT WAS PREPARED FROM FIELD NOTES OF ACTUAL SURVEYS MADE BY ME OR UNDER MY SUPERVISION AND THAT THE SAME ARE TRUE AND CORRECT TO THE BEST OF MY KNOWLEDGE AND BELIEF.

REGISTERED LAND SURVEYOR
REGISTRATION NO. 17492
STATE OF COLORADO

REV: 10-04-12

UINTAH ENGINEERING & LAND SURVEYING
85 SOUTH 200 EAST - VERNAL, UTAH 84078
(435) 789-1017

LEGEND:

- └─┘ = 90° SYMBOL
- = PROPOSED WELL HEAD.
- ▲ = SECTION CORNERS LOCATED.
- △ = SECTION CORNERS RE-ESTABLISHED. (Not Set on Ground.)

PDOP = 1.7

NAD 83 (TARGET BOTTOM HOLE)	NAD 83 (SURFACE LOCATION)
LATITUDE = 40°08'25.89" (40.140525)	LATITUDE = 40°08'30.51" (40.141808)
LONGITUDE = 104°41'07.75" (104.685486)	LONGITUDE = 104°41'01.49" (104.683747)
NAD 27 (TARGET BOTTOM HOLE)	NAD 27 (SURFACE LOCATION)
LATITUDE = 40°08'25.95" (40.140542)	LATITUDE = 40°08'30.57" (40.141825)
LONGITUDE = 104°41'05.87" (104.684964)	LONGITUDE = 104°40'59.61" (104.683225)

SCALE 1" = 1000'	DATE SURVEYED: 09-25-12	DATE DRAWN: 09-28-12
PARTY D.N. G.W. J.W.	REFERENCES G.L.O. PLAT	
WEATHER WARM	FILE GREAT WESTERN OIL & GAS COMPANY	