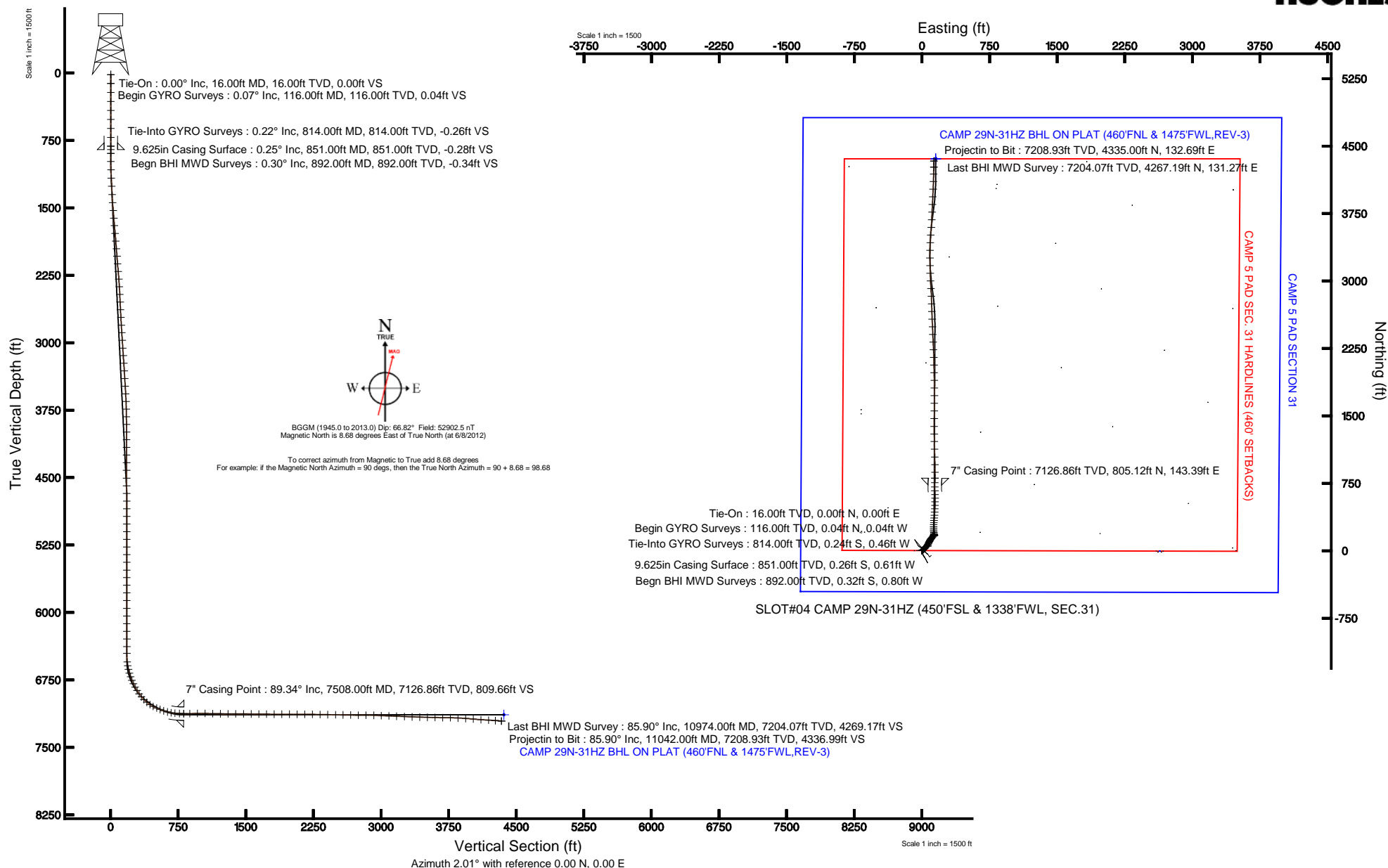


KERR-MCGEE OIL & GAS ONSHORE LP

Location: COLORADO Slot: SLOT#04 CAMP 29N-31HZ (450'FSL & 1338'FWL, SEC.31)
 Field: WELD COUNTY (KERR MCGEE) Well: CAMP 29N-31HZ
 Facility: SEC.31-T3N-R65W Wellbore: CAMP 29N-31HZ PWB

Plot reference wellpath is CAMP 29N-31HZ (REV-C.0) PWP

True vertical depths are referenced to XTREME 20 (RKB)	Grid System: NAD83 / Lambert Colorado SP, Northern Zone (501), US feet
Measured depths are referenced to XTREME 20 (RKB)	North Reference: True north
XTREME 20 (RKB) to Mean Sea Level: 4985 feet	Scale: True distance
Mean Sea Level to Mud line (At Slot: SLOT#04 CAMP 29N-31HZ (450'FSL & 1338'FWL, SEC.31)): 0 feet	Depths are in feet
Coordinates are in feet referenced to Slot	Created by: wilsef02 on 7/10/2012





Actual Wellpath Report

CAMP 29N-31HZ AWP

Page 1 of 6



REFERENCE WELLPATH IDENTIFICATION

Operator	KERR-MCGEE OIL & GAS ONSHORE LP	Slot	SLOT#04 CAMP 29N-31HZ (450'FSL & 1338'FWL, SEC.31)
Area	COLORADO	Well	CAMP 29N-31HZ
Field	WELD COUNTY (KERR MCGEE)	Wellbore	CAMP 29N-31HZ AWB
Facility	SEC.31-T3N-R65W		

REPORT SETUP INFORMATION

Projection System	NAD83 / Lambert Colorado SP, Northern Zone (501), US feet	Software System	WellArchitect® 3.0.2
North Reference	True	User	Wilsjef02
Scale	0.999958	Report Generated	7/10/2012 at 12:42:40
Convergence at slot	0.51° East	Database/Source file	WellArchitectDB/CAMP_29N-31HZ_AWB.xml

WELLPATH LOCATION

	Local coordinates		Grid coordinates		Geographic coordinates	
	North[ft]	East[ft]	Easting[US ft]	Northing[US ft]	Latitude	Longitude
Slot Location	-0.04	84.11	3220464.03	1307926.27	40°10'33.460"N	104°42'39.650"W
Facility Reference Pt			3220379.93	1307925.56	40°10'33.460"N	104°42'40.734"W
Field Reference Pt			3197771.84	1268891.29	40°04'09.600"N	104°47'36.000"W

WELLPATH DATUM

Calculation method	Minimum curvature	XTREME 20 (RKB) to Facility Vertical Datum	4985.00ft
Horizontal Reference Pt	Slot	XTREME 20 (RKB) to Mean Sea Level	4985.00ft
Vertical Reference Pt	XTREME 20 (RKB)	XTREME 20 (RKB) to Mud Line at Slot (SLOT#04 CAMP 29N-31HZ (450'FSL & 1338'FWL, SEC.31))	4985.00ft
MD Reference Pt	XTREME 20 (RKB)	Section Origin	N 0.00, E 0.00 ft
Field Vertical Reference	Mean Sea Level	Section Azimuth	1.75°



Actual Wellpath Report

CAMP 29N-31HZ AWP

Page 2 of 6



REFERENCE WELLPATH IDENTIFICATION

Operator	KERR-MCGEE OIL & GAS ONSHORE LP	Slot	SLOT#04 CAMP 29N-31HZ (450'FSL & 1338'FWL, SEC.31)
Area	COLORADO	Well	CAMP 29N-31HZ
Field	WELD COUNTY (KERR MCGEE)	Wellbore	CAMP 29N-31HZ AWB
Facility	SEC.31-T3N-R65W		

WELLPATH DATA (141 stations) † = interpolated/extrapolated station

MD [ft]	Inclination [°]	Azimuth [°]	TVD [ft]	Vert Sect [ft]	North [ft]	East [ft]	Latitude	Longitude	DLS [°/100ft]	Comments
0.00†	0.000	315.430	0.00	0.00	0.00	0.00	40°10'33.460"N	104°42'39.650"W	0.00	
16.00	0.000	315.430	16.00	0.00	0.00	0.00	40°10'33.460"N	104°42'39.650"W	0.00	Tie-On
116.00	0.070	315.430	116.00	0.04	0.04	-0.04	40°10'33.460"N	104°42'39.651"W	0.07	Begin GYRO Surveys
216.00	0.100	298.140	216.00	0.12	0.13	-0.16	40°10'33.461"N	104°42'39.652"W	0.04	
316.00	0.090	265.130	316.00	0.15	0.16	-0.32	40°10'33.461"N	104°42'39.654"W	0.05	
416.00	0.140	227.330	416.00	0.06	0.07	-0.49	40°10'33.460"N	104°42'39.657"W	0.09	
516.00	0.190	205.130	516.00	-0.18	-0.16	-0.65	40°10'33.458"N	104°42'39.659"W	0.08	
616.00	0.100	107.860	616.00	-0.36	-0.34	-0.63	40°10'33.456"N	104°42'39.659"W	0.23	
716.00	0.170	69.000	716.00	-0.32	-0.31	-0.41	40°10'33.457"N	104°42'39.656"W	0.11	
814.00	0.220	274.100	814.00	-0.26	-0.24	-0.46	40°10'33.457"N	104°42'39.656"W	0.39	Tie-Into GYRO Surveys
892.00	0.300	246.420	892.00	-0.34	-0.32	-0.80	40°10'33.456"N	104°42'39.661"W	0.19	Begin BHI MWD Surveys
984.00	1.690	64.590	983.99	0.18	0.17	0.20	40°10'33.461"N	104°42'39.648"W	2.16	
1076.00	3.050	60.480	1075.91	2.07	1.96	3.56	40°10'33.479"N	104°42'39.605"W	1.49	
1168.00	4.490	50.320	1167.70	5.72	5.46	8.46	40°10'33.514"N	104°42'39.541"W	1.72	
1260.00	4.430	52.400	1259.43	10.36	9.93	14.05	40°10'33.558"N	104°42'39.469"W	0.19	
1351.00	4.230	52.760	1350.17	14.70	14.11	19.50	40°10'33.599"N	104°42'39.399"W	0.22	
1443.00	5.440	41.760	1441.84	20.17	19.41	25.11	40°10'33.651"N	104°42'39.327"W	1.65	
1530.00	5.730	40.260	1528.43	26.73	25.80	30.66	40°10'33.715"N	104°42'39.255"W	0.37	
1615.00	5.900	39.590	1612.99	33.50	32.41	36.19	40°10'33.780"N	104°42'39.184"W	0.22	
1700.00	6.250	40.700	1697.51	40.55	39.28	41.99	40°10'33.848"N	104°42'39.109"W	0.43	
1786.00	6.390	40.860	1782.99	47.90	46.45	48.17	40°10'33.919"N	104°42'39.030"W	0.16	
1872.00	5.330	36.830	1868.54	54.89	53.27	53.70	40°10'33.986"N	104°42'38.959"W	1.32	
1957.00	5.810	39.460	1953.14	61.52	59.75	58.80	40°10'34.050"N	104°42'38.893"W	0.64	
2042.00	5.840	35.900	2037.70	68.50	66.57	64.07	40°10'34.117"N	104°42'38.825"W	0.43	
2127.00	4.890	29.710	2122.33	75.28	73.22	68.40	40°10'34.183"N	104°42'38.769"W	1.31	
2212.00	4.940	27.010	2207.01	81.79	79.63	71.86	40°10'34.247"N	104°42'38.725"W	0.28	
2298.00	4.810	24.330	2292.70	88.47	86.22	75.03	40°10'34.312"N	104°42'38.684"W	0.30	
2383.00	4.280	19.440	2377.44	94.78	92.45	77.55	40°10'34.373"N	104°42'38.651"W	0.77	
2468.00	3.040	39.400	2462.26	99.59	97.19	80.04	40°10'34.420"N	104°42'38.619"W	2.07	
2554.00	3.070	32.750	2548.14	103.37	100.89	82.73	40°10'34.457"N	104°42'38.585"W	0.41	
2639.00	2.660	14.360	2633.04	107.25	104.71	84.45	40°10'34.494"N	104°42'38.562"W	1.18	
2724.00	3.470	24.880	2717.92	111.54	108.96	86.02	40°10'34.536"N	104°42'38.542"W	1.16	
2810.00	3.510	20.990	2803.76	116.42	113.77	88.06	40°10'34.584"N	104°42'38.516"W	0.28	
2895.00	4.100	28.740	2888.57	121.58	118.87	90.45	40°10'34.634"N	104°42'38.485"W	0.92	
2980.00	4.690	37.460	2973.32	127.11	124.29	94.03	40°10'34.688"N	104°42'38.439"W	1.05	
3066.00	4.820	36.540	3059.02	132.93	129.98	98.32	40°10'34.744"N	104°42'38.384"W	0.18	
3151.00	4.340	44.400	3143.75	138.23	135.15	102.69	40°10'34.795"N	104°42'38.327"W	0.93	
3236.00	4.610	38.570	3228.49	143.33	140.12	107.07	40°10'34.844"N	104°42'38.271"W	0.62	
3321.00	4.830	36.640	3313.21	149.00	145.66	111.34	40°10'34.899"N	104°42'38.216"W	0.32	
3406.00	4.730	36.650	3397.91	154.81	151.35	115.57	40°10'34.955"N	104°42'38.162"W	0.12	
3492.00	4.400	40.800	3483.64	160.28	156.69	119.84	40°10'35.008"N	104°42'38.107"W	0.54	
3577.00	3.920	50.260	3568.41	164.74	161.01	124.20	40°10'35.051"N	104°42'38.050"W	0.98	
3662.00	3.000	49.850	3653.26	168.15	164.31	128.14	40°10'35.083"N	104°42'38.000"W	1.08	
3747.00	2.200	51.130	3738.17	170.70	166.76	131.11	40°10'35.108"N	104°42'37.961"W	0.94	
3833.00	1.780	56.410	3824.12	172.54	168.54	133.51	40°10'35.125"N	104°42'37.930"W	0.53	



Actual Wellpath Report

CAMP 29N-31HZ AWP

Page 3 of 6



REFERENCE WELLPATH IDENTIFICATION			
Operator	KERR-MCGEE OIL & GAS ONSHORE LP	Slot	SLOT#04 CAMP 29N-31HZ (450'FSL & 1338'FWL, SEC.31)
Area	COLORADO	Well	CAMP 29N-31HZ
Field	WELD COUNTY (KERR MCGEE)	Wellbore	CAMP 29N-31HZ AWB
Facility	SEC.31-T3N-R65W		

WELLPATH DATA (141 stations)										
MD [ft]	Inclination [°]	Azimuth [°]	TVD [ft]	Vert Sect [ft]	North [ft]	East [ft]	Latitude	Longitude	DLS [°/100ft]	Comments
3918.00	0.800	66.830	3909.10	173.56	169.50	135.15	40°10'35.135"N	104°42'37.909"W	1.18	
4003.00	0.840	70.290	3994.09	174.04	169.95	136.28	40°10'35.139"N	104°42'37.895"W	0.07	
4088.00	0.410	322.600	4079.08	174.50	170.40	136.69	40°10'35.143"N	104°42'37.889"W	1.22	
4174.00	0.570	286.790	4165.08	174.85	170.77	136.09	40°10'35.147"N	104°42'37.897"W	0.39	
4259.00	0.790	291.330	4250.07	175.15	171.10	135.14	40°10'35.150"N	104°42'37.909"W	0.27	
4344.00	0.120	280.070	4335.07	175.36	171.33	134.51	40°10'35.153"N	104°42'37.918"W	0.79	
4429.00	0.220	257.130	4420.07	175.34	171.31	134.26	40°10'35.152"N	104°42'37.921"W	0.14	
4515.00	0.170	27.840	4506.07	175.41	171.38	134.16	40°10'35.153"N	104°42'37.922"W	0.41	
4600.00	0.060	29.990	4591.07	175.56	171.53	134.24	40°10'35.155"N	104°42'37.921"W	0.13	
4685.00	0.370	6.170	4676.07	175.87	171.85	134.29	40°10'35.158"N	104°42'37.920"W	0.37	
4770.00	0.410	12.730	4761.07	176.45	172.42	134.39	40°10'35.163"N	104°42'37.919"W	0.07	
4856.00	0.740	49.930	4847.06	177.12	173.07	134.88	40°10'35.170"N	104°42'37.913"W	0.56	
4941.00	0.150	77.930	4932.06	177.51	173.45	135.41	40°10'35.174"N	104°42'37.906"W	0.72	
5026.00	0.190	76.010	5017.06	177.58	173.51	135.65	40°10'35.174"N	104°42'37.903"W	0.05	
5111.00	0.430	242.490	5102.06	177.46	173.39	135.51	40°10'35.173"N	104°42'37.905"W	0.73	
5197.00	0.480	225.520	5188.06	177.04	172.99	134.96	40°10'35.169"N	104°42'37.912"W	0.17	
5282.00	0.460	259.020	5273.05	176.71	172.68	134.38	40°10'35.166"N	104°42'37.919"W	0.32	
5367.00	0.410	233.850	5358.05	176.45	172.43	133.79	40°10'35.164"N	104°42'37.927"W	0.23	
5452.00	0.300	303.710	5443.05	176.38	172.38	133.36	40°10'35.163"N	104°42'37.932"W	0.49	
5538.00	0.250	291.530	5529.05	176.56	172.57	133.00	40°10'35.165"N	104°42'37.937"W	0.09	
5623.00	0.110	283.430	5614.05	176.64	172.66	132.75	40°10'35.166"N	104°42'37.940"W	0.17	
5708.00	0.400	259.240	5699.05	176.59	172.62	132.38	40°10'35.165"N	104°42'37.945"W	0.36	
5793.00	0.330	241.190	5784.05	176.40	172.45	131.87	40°10'35.164"N	104°42'37.951"W	0.16	
5878.00	0.060	316.310	5869.05	176.31	172.36	131.63	40°10'35.163"N	104°42'37.955"W	0.38	
5964.00	0.340	72.740	5955.05	176.42	172.47	131.84	40°10'35.164"N	104°42'37.952"W	0.43	
6049.00	0.740	62.430	6040.04	176.77	172.80	132.57	40°10'35.167"N	104°42'37.943"W	0.48	
6134.00	0.650	83.670	6125.04	177.11	173.11	133.53	40°10'35.170"N	104°42'37.930"W	0.32	
6219.00	0.560	53.440	6210.03	177.44	173.41	134.35	40°10'35.173"N	104°42'37.920"W	0.39	
6305.00	0.170	39.960	6296.03	177.80	173.76	134.77	40°10'35.177"N	104°42'37.914"W	0.46	
6390.00	0.080	175.250	6381.03	177.84	173.79	134.85	40°10'35.177"N	104°42'37.913"W	0.27	
6466.00	0.400	315.990	6457.03	177.97	173.93	134.67	40°10'35.178"N	104°42'37.915"W	0.61	
6560.00	5.000	348.540	6550.90	182.19	178.18	133.63	40°10'35.220"N	104°42'37.929"W	4.97	
6602.00	9.250	353.910	6592.57	187.32	183.34	132.91	40°10'35.271"N	104°42'37.938"W	10.23	
6645.00	13.080	354.780	6634.75	195.57	191.62	132.10	40°10'35.353"N	104°42'37.949"W	8.92	
6687.00	15.530	353.940	6675.44	205.86	201.95	131.07	40°10'35.455"N	104°42'37.962"W	5.85	
6730.00	19.320	357.210	6716.46	218.66	214.78	130.12	40°10'35.582"N	104°42'37.974"W	9.10	
6772.00	21.850	358.130	6755.78	233.39	229.54	129.52	40°10'35.728"N	104°42'37.982"W	6.07	
6815.00	25.530	359.070	6795.15	250.64	246.80	129.11	40°10'35.899"N	104°42'37.987"W	8.60	
6857.00	28.150	1.280	6832.62	269.59	265.76	129.19	40°10'36.086"N	104°42'37.986"W	6.67	
6900.00	30.760	2.310	6870.06	290.73	286.89	129.86	40°10'36.295"N	104°42'37.977"W	6.18	
6942.00	34.310	3.920	6905.46	313.31	309.44	131.10	40°10'36.518"N	104°42'37.961"W	8.70	
6985.00	38.340	4.650	6940.10	338.75	334.84	133.01	40°10'36.768"N	104°42'37.937"W	9.43	
7027.00	45.220	5.590	6971.40	366.67	362.69	135.52	40°10'37.044"N	104°42'37.904"W	16.45	
7070.00	49.970	4.540	7000.39	398.35	394.31	138.31	40°10'37.356"N	104°42'37.869"W	11.19	
7113.00	57.290	3.470	7025.87	432.93	428.82	140.71	40°10'37.697"N	104°42'37.838"W	17.14	



Actual Wellpath Report

CAMP 29N-31HZ AWP

Page 4 of 6



REFERENCE WELLPATH IDENTIFICATION

Operator	KERR-MCGEE OIL & GAS ONSHORE LP	Slot	SLOT#04 CAMP 29N-31HZ (450'FSL & 1338'FWL, SEC.31)
Area	COLORADO	Well	CAMP 29N-31HZ
Field	WELD COUNTY (KERR MCGEE)	Wellbore	CAMP 29N-31HZ AWB
Facility	SEC.31-T3N-R65W		

WELLPATH DATA (141 stations) † = interpolated/extrapolated station

MD [ft]	Inclination [°]	Azimuth [°]	TVD [ft]	Vert Sect [ft]	North [ft]	East [ft]	Latitude	Longitude	DLS [°/100ft]	Comments
7155.00	63.370	2.550	7046.65	469.39	465.25	142.62	40°10'38.057"N	104°42'37.813"W	14.60	
7198.00	67.460	1.610	7064.54	508.49	504.32	144.03	40°10'38.443"N	104°42'37.795"W	9.72	
7240.00	68.590	1.780	7080.25	547.44	543.25	145.19	40°10'38.828"N	104°42'37.780"W	2.72	
7283.00	70.610	358.970	7095.25	587.72	583.54	145.44	40°10'39.226"N	104°42'37.777"W	7.72	
7326.00	75.620	358.170	7107.73	628.79	624.66	144.41	40°10'39.633"N	104°42'37.790"W	11.79	
7368.00	79.740	358.050	7116.69	669.73	665.66	143.06	40°10'40.038"N	104°42'37.807"W	9.81	
7411.00	84.970	359.580	7122.41	712.28	708.26	142.18	40°10'40.459"N	104°42'37.819"W	12.66	
7459.00	87.560	1.220	7125.54	760.15	756.15	142.52	40°10'40.932"N	104°42'37.814"W	6.38	
7508.00†	89.343	0.831	7126.86	809.13	805.12	143.39	40°10'41.416"N	104°42'37.803"W	3.72	7" Casing Point
7575.00	91.780	0.300	7126.20	876.11	872.11	144.06	40°10'42.078"N	104°42'37.794"W	3.72	
7660.00	90.700	358.990	7124.36	961.03	957.08	143.53	40°10'42.918"N	104°42'37.801"W	2.00	
7745.00	88.980	358.430	7124.60	1045.90	1042.06	141.62	40°10'43.757"N	104°42'37.826"W	2.13	
7831.00	88.670	357.740	7126.37	1131.71	1127.99	138.74	40°10'44.606"N	104°42'37.863"W	0.88	
7916.00	89.070	359.330	7128.04	1216.56	1212.94	136.57	40°10'45.446"N	104°42'37.891"W	1.93	
8001.00	89.190	359.180	7129.33	1301.46	1297.93	135.47	40°10'46.286"N	104°42'37.905"W	0.23	
8086.00	90.060	0.410	7129.89	1386.41	1382.92	135.16	40°10'47.126"N	104°42'37.909"W	1.77	
8172.00	89.900	0.140	7129.92	1472.38	1468.92	135.57	40°10'47.976"N	104°42'37.904"W	0.36	
8257.00	89.160	0.990	7130.62	1557.36	1553.91	136.41	40°10'48.815"N	104°42'37.893"W	1.33	
8342.00	89.530	0.550	7131.59	1642.34	1638.90	137.55	40°10'49.655"N	104°42'37.878"W	0.68	
8427.00	89.040	0.050	7132.65	1727.31	1723.89	138.00	40°10'50.495"N	104°42'37.872"W	0.82	
8513.00	90.060	359.250	7133.32	1813.24	1809.89	137.47	40°10'51.345"N	104°42'37.879"W	1.51	
8598.00	90.030	359.040	7133.26	1898.16	1894.88	136.21	40°10'52.185"N	104°42'37.896"W	0.25	
8683.00	90.000	358.840	7133.23	1983.05	1979.86	134.63	40°10'53.025"N	104°42'37.916"W	0.24	
8768.00	89.290	358.940	7133.76	2067.95	2064.84	132.99	40°10'53.864"N	104°42'37.937"W	0.84	
8854.00	89.930	358.150	7134.35	2153.81	2150.81	130.80	40°10'54.714"N	104°42'37.965"W	1.18	
8939.00	89.130	357.410	7135.04	2238.60	2235.74	127.51	40°10'55.553"N	104°42'38.008"W	1.28	
9024.00	88.980	357.380	7136.45	2323.34	2320.64	123.65	40°10'56.392"N	104°42'38.057"W	0.18	
9109.00	88.890	357.790	7138.03	2408.10	2405.55	120.07	40°10'57.231"N	104°42'38.103"W	0.49	
9195.00	89.230	357.600	7139.44	2493.87	2491.47	116.61	40°10'58.080"N	104°42'38.148"W	0.45	
9280.00	88.820	357.500	7140.88	2578.63	2576.38	112.98	40°10'58.919"N	104°42'38.195"W	0.50	
9365.00	88.760	357.960	7142.68	2663.40	2661.30	109.61	40°10'59.759"N	104°42'38.238"W	0.55	
9450.00	89.690	358.500	7143.83	2748.24	2746.25	106.98	40°11'00.598"N	104°42'38.272"W	1.27	
9535.00	89.870	357.790	7144.15	2833.07	2831.20	104.23	40°11'01.438"N	104°42'38.307"W	0.86	
9621.00	88.390	356.300	7145.46	2918.76	2917.07	99.80	40°11'02.286"N	104°42'38.365"W	2.44	
9706.00	87.160	357.040	7148.76	3003.36	3001.86	94.87	40°11'03.124"N	104°42'38.428"W	1.69	
9791.00	87.930	357.600	7152.40	3088.03	3086.69	90.90	40°11'03.962"N	104°42'38.479"W	1.12	
9876.00	87.780	359.450	7155.58	3172.83	3171.60	88.71	40°11'04.801"N	104°42'38.507"W	2.18	
9962.00	87.290	359.730	7159.28	3258.69	3257.52	88.09	40°11'05.650"N	104°42'38.515"W	0.66	
10047.00	87.990	1.000	7162.78	3343.59	3342.44	88.64	40°11'06.490"N	104°42'38.508"W	1.70	
10132.00	88.520	3.650	7165.37	3428.54	3427.32	92.08	40°11'07.328"N	104°42'38.464"W	3.18	
10217.00	87.870	4.090	7168.05	3513.44	3512.09	97.82	40°11'08.166"N	104°42'38.390"W	0.92	
10303.00	89.260	3.250	7170.20	3599.36	3597.88	103.32	40°11'09.014"N	104°42'38.319"W	1.89	
10388.00	89.590	2.870	7171.05	3684.33	3682.76	107.86	40°11'09.853"N	104°42'38.261"W	0.59	
10473.00	88.580	2.410	7172.41	3769.31	3767.65	111.77	40°11'10.692"N	104°42'38.210"W	1.31	
10558.00	87.440	2.920	7175.36	3854.25	3852.51	115.72	40°11'11.530"N	104°42'38.159"W	1.47	



Actual Wellpath Report

CAMP 29N-31HZ AWP

Page 5 of 6



REFERENCE WELLPATH IDENTIFICATION

Operator	KERR-MCGEE OIL & GAS ONSHORE LP	Slot	SLOT#04 CAMP 29N-31HZ (450'FSL & 1338'FWL, SEC.31)
Area	COLORADO	Well	CAMP 29N-31HZ
Field	WELD COUNTY (KERR MCGEE)	Wellbore	CAMP 29N-31HZ AWB
Facility	SEC.31-T3N-R65W		

WELLPATH DATA (141 stations)

MD [ft]	Inclination [°]	Azimuth [°]	TVD [ft]	Vert Sect [ft]	North [ft]	East [ft]	Latitude	Longitude	DLS [°/100ft]	Comments
10643.00	85.770	2.770	7180.40	3939.08	3937.25	119.93	40°11'12.368"N	104°42'38.105"W	1.97	
10728.00	85.060	2.000	7187.19	4023.80	4021.91	123.46	40°11'13.204"N	104°42'38.060"W	1.23	
10813.00	86.450	2.140	7193.48	4108.56	4106.61	126.52	40°11'14.041"N	104°42'38.020"W	1.64	
10898.00	86.270	1.690	7198.88	4193.39	4191.40	129.35	40°11'14.879"N	104°42'37.984"W	0.57	
10974.00	85.900	1.200	7204.07	4269.21	4267.19	131.27	40°11'15.628"N	104°42'37.959"W	0.81	Last BHI MWD Survey
11042.00	85.900	1.200	7208.93	4337.03	4335.00	132.69	40°11'16.298"N	104°42'37.941"W	0.00	Projectin to Bit

HOLE & CASING SECTIONS - Ref Wellbore: CAMP 29N-31HZ AWB Ref Wellpath: CAMP 29N-31HZ AWP

String/Diameter	Start MD [ft]	End MD [ft]	Interval [ft]	Start TVD [ft]	End TVD [ft]	Start N/S [ft]	Start E/W [ft]	End N/S [ft]	End E/W [ft]
13.5in Open Hole	16.00	851.00	835.00	16.00	851.00	0.00	0.00	-0.26	-0.61
9.625in Casing Surface	16.00	851.00	835.00	16.00	851.00	0.00	0.00	-0.26	-0.61
8.75in Open Hole	851.00	7520.00	6669.00	851.00	7126.95	-0.26	-0.61	817.12	143.56
7in Casing Intermediate	16.00	7508.00	7492.00	16.00	7126.86	0.00	0.00	805.12	143.39
6.125in Open Hole	7508.00	11042.00	3534.00	7126.86	7208.93	805.12	143.39	4335.00	132.69

TARGETS

Name	MD [ft]	TVD [ft]	North [ft]	East [ft]	Grid East [US ft]	Grid North [US ft]	Latitude	Longitude	Shape
CAMP 5 PAD SECTION 31		11.00	-6.09	2638.52	3223102.38	1307943.65	40°10'33.398"N	104°42'05.659"W	polygon
CAMP 29N-31HZ BHL ON PLAT (460'FNL & 1475'FWL,REV-3)		7140.00	4360.29	153.11	3220578.34	1312287.56	40°11'16.548"N	104°42'37.678"W	point
CAMP 29N-31HZ BHL ON PLAT (460'FNL & 1475'FWL,REV-2)		7153.00	4360.29	153.11	3220578.34	1312287.56	40°11'16.548"N	104°42'37.678"W	point
CAMP 29N-31HZ BHL ON PLAT (460'FNL & 1475'FWL,REV-1)		7164.00	4360.29	153.08	3220578.30	1312287.55	40°11'16.548"N	104°42'37.678"W	point
CAMP 5 PAD SEC. 31 HARDLINES (460' SETBACKS)		7411.00	-6.09	2638.52	3223102.38	1307943.65	40°10'33.398"N	104°42'05.659"W	polygon

WELLPATH COMPOSITION - Ref Wellbore: CAMP 29N-31HZ AWB Ref Wellpath: CAMP 29N-31HZ AWP

Start MD [ft]	End MD [ft]	Positional Uncertainty Model	Log Name/Comment	Wellbore
16.00	814.00	Generic gyro - continuous (Standard)	GYRODATA SURVEYS <116-814>	CAMP 29N-31HZ AWB
814.00	7459.00	NaviTrak (Standard)	BHI NAVITRAK MWD <892-7459>	CAMP 29N-31HZ AWB
7459.00	10974.00	OnTrak (Standard)	BHI ONTRAK MWD <7575-10974>	CAMP 29N-31HZ AWB
10974.00	11042.00	Blind Drilling (std)	Projection to bit	CAMP 29N-31HZ AWB



Actual Wellpath Report

CAMP 29N-31HZ AWP

Page 6 of 6



REFERENCE WELLPATH IDENTIFICATION			
Operator	KERR-MCGEE OIL & GAS ONSHORE LP	Slot	SLOT#04 CAMP 29N-31HZ (450'FSL & 1338'FWL, SEC.31)
Area	COLORADO	Well	CAMP 29N-31HZ
Field	WELD COUNTY (KERR MCGEE)	Wellbore	CAMP 29N-31HZ AWB
Facility	SEC.31-T3N-R65W		

WELLPATH COMMENTS					
MD [ft]	Inclination [°]	Azimuth [°]	TVD [ft]	Comment	
16.00	0.000	315.430	16.00	Tie-On	
116.00	0.070	315.430	116.00	Begin GYRO Surveys	
814.00	0.220	274.100	814.00	Tie-Into GYRO Surveys	
892.00	0.300	246.420	892.00	Begin BHI MWD Surveys	
7508.00	89.343	0.831	7126.86	7" Casing Point	
10974.00	85.900	1.200	7204.07	Last BHI MWD Survey	
11042.00	85.900	1.200	7208.93	Projectin to Bit	