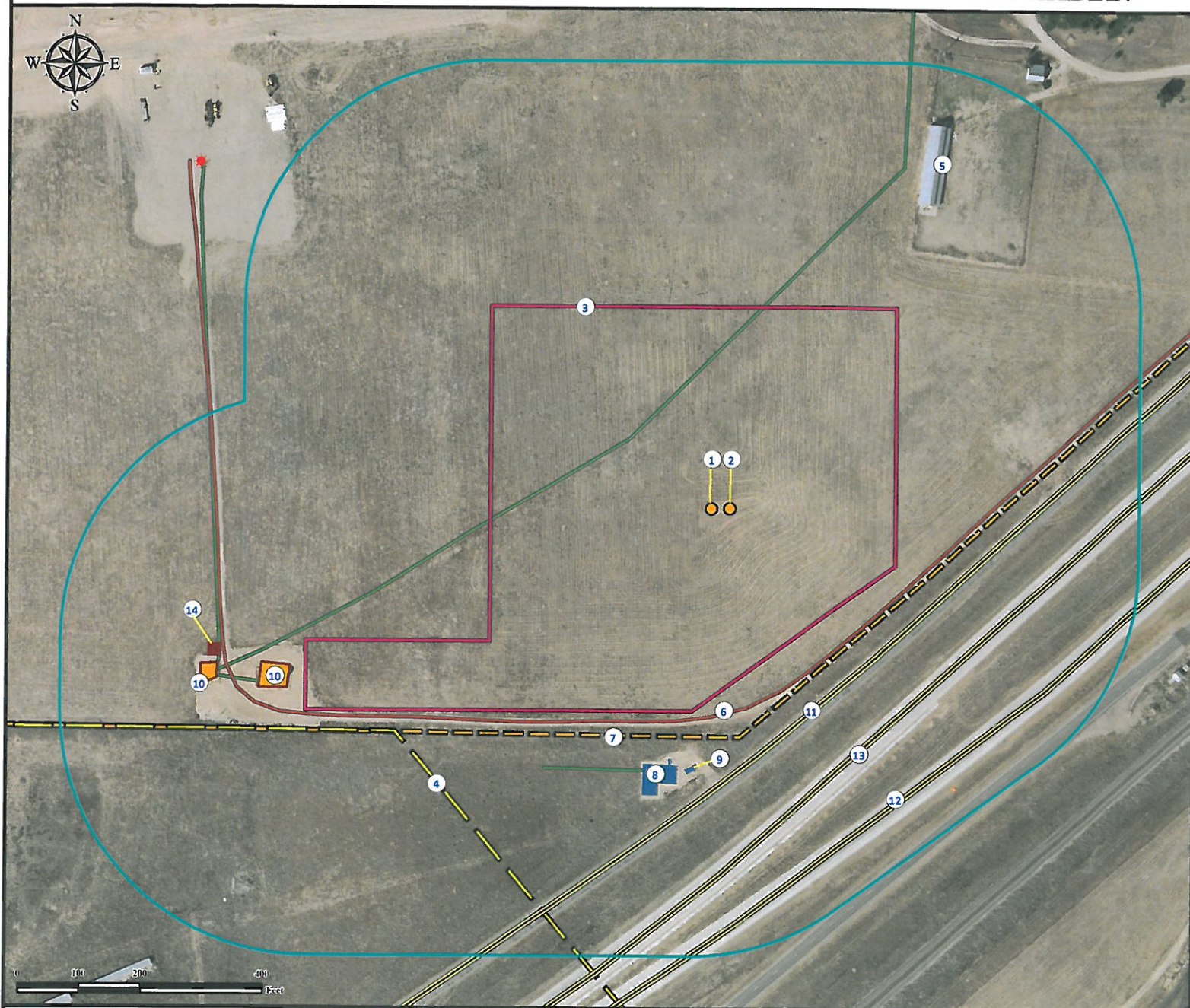


# Location Drawing SPARBOE 1N-26HZ

## Horizontal Multi Well Pad

SE¼ SE¼ SECTION 35, TOWNSHIP 2 NORTH, RANGE 65 WEST OF THE 6TH PRINCIPAL MERIDIAN



1. Proposed well SPARBOE 1N-26HZ.

2. Proposed well SPARBOE 26C-26HZ.

3. Operational Disturbance Area.

4. Powerline is ±629' SW.

5. Building is not in this location per field verify.

6. Private road is ±306' SE.

7. Fence is ±314' SE.

8. Pig Launcher is ±413' S.

9. Oil & Gas Equipment is ±420' S.

10. Existing Facilities are ±730' SW and ±855' SW.

11. Bison Road is ±358' SE.

12. Interstate 76 East is ±564' SE.

13. Interstate 76 West is ±455' SE.

14. Emissions Control Device is ±841' SW.

### Legend

- |               |                      |                      |
|---------------|----------------------|----------------------|
| Fence         | Oil & Gas Equipment  | Underground Pipeline |
| Proposed Well | Facilities Enclosure | Public Road          |
| Existing Well | Disturbance Area     | Private Road         |
| ECD           | 400' Radius          | Powerline            |

### Reference Location

\*\* All Measurements are Made from  
Reference Well SPARBOE 1N-26HZ \*\*

Lat: 40.088609° Long: -104.624654° (NAD83)  
Elevation: 4946 Feet

Surface Use: Rangeland



Use our resources to find yours!

[www.petro-fs.com](http://www.petro-fs.com)  
(303) 928-7128

Field Date: 05/08/2012  
Drafting Date: 10/15/2012  
Drafter: GWB  
Revision: 2

### Data Sources:

- Aerial courtesy of Anadarko  
Petroleum Corporation (2010)

Prepared for:



KERR-MCGEE OIL & GAS ONSHORE LP