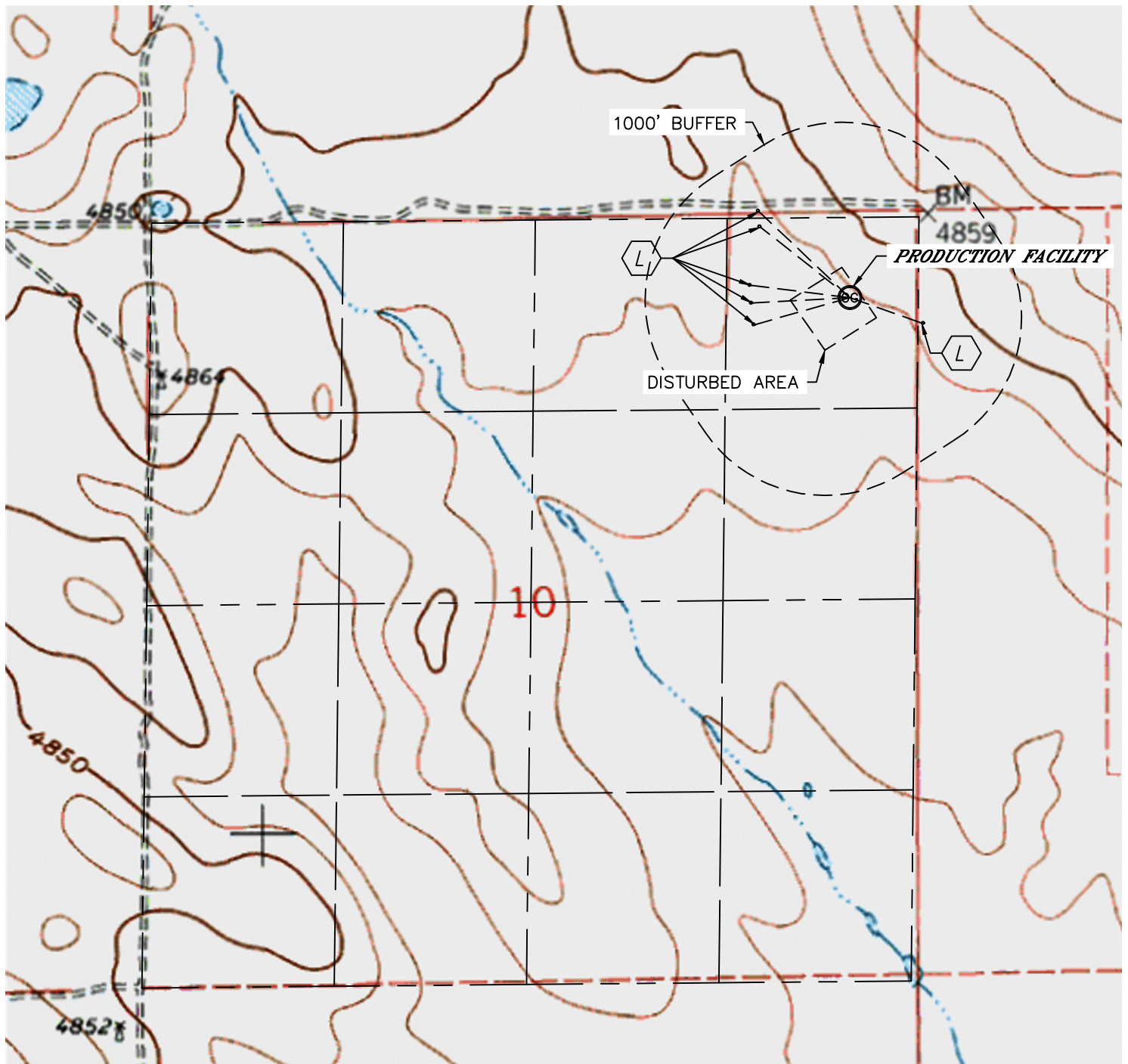


Lat40°, Inc. 1635 Foxtrail Drive, Suite 325 Loveland, CO 970-776-3321

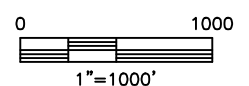
PRODUCTION FACILITY HYDROLOGY MAP

JEANIE AB10-01R

SECTION: 10
TOWNSHIP: 7N
RANGE: 64W



LOW AREA 527' SE, 673' W, 687' NW, 783' NW,
862' NW, 680' SW



DATE: rev10/16/2012
PROJECT#: 2012123