

# LOCATION DRAWING

VEGETATION:  
CRP

SURFACE USE:  
NON CROP LAND

## REFERENCE POINT

LATITUDE: 40.55430

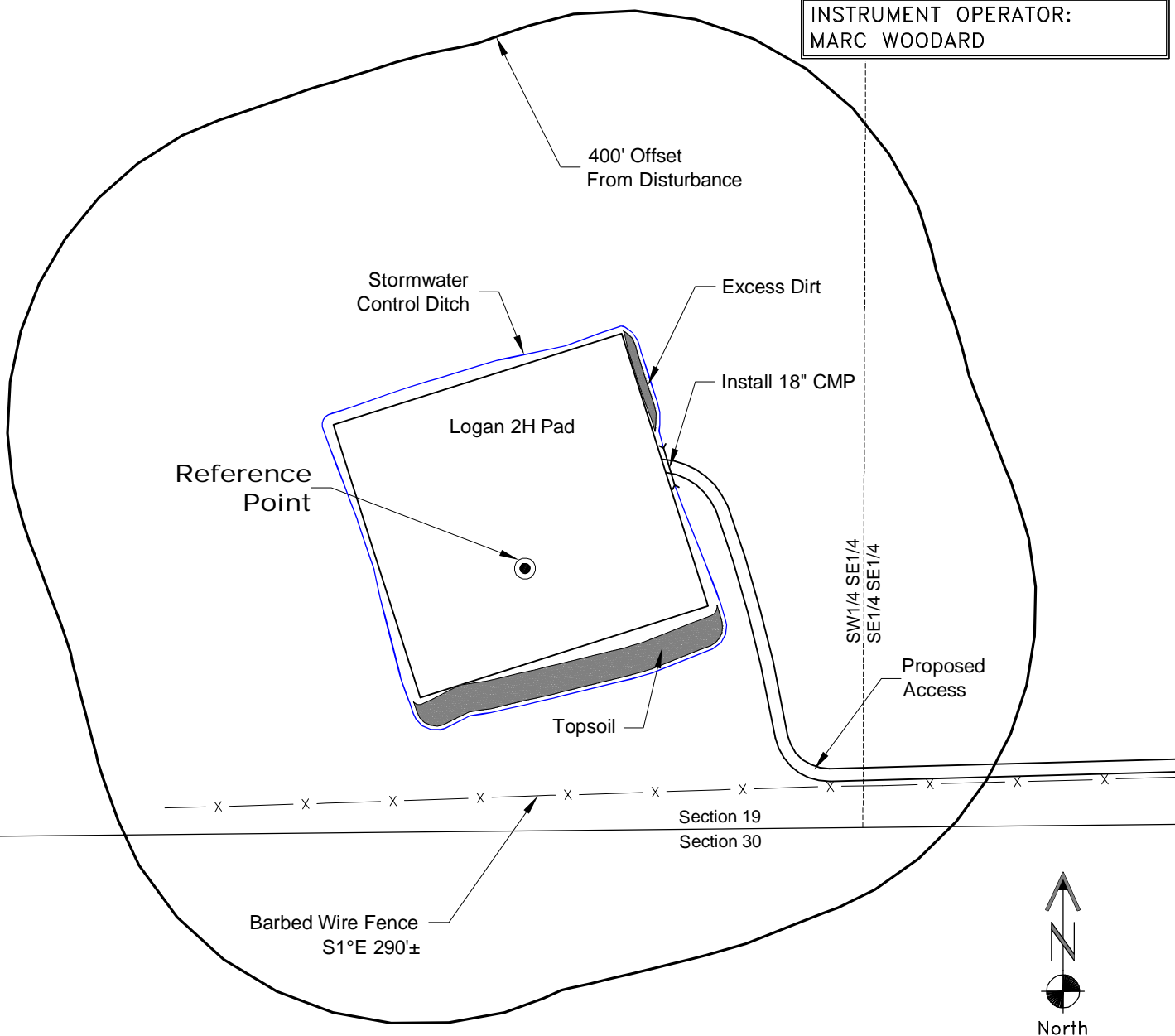
LONGITUDE: -104.01880

FOOTAGE: 330 FSL 1745 FEL

GROUND ELEVATION: 4939.1

PDOP: 2.0 DATE: 8/16/2012

INSTRUMENT OPERATOR:  
MARC WOODARD

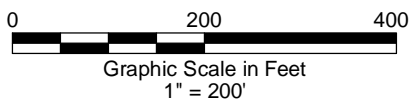


NOTE-DISTANCE TO NEAREST:  
Property Line - S1°E 330'±  
Public Road - WCR 109 - W 3,570'±  
Building - House S45°W 4,840'±  
Railroad - S3°E 21.2 Miles±  
Powerline - N 4,990'±

DISTURBANCE ACREAGE:  
4.2± DRILLING OPERATIONS  
1.0± INTERIM RECLAIM

NOTE:  
ALL PRODUCTION FACILITIES WILL BE ON PAD.

9/6/12



**CONDOR ENERGY TECHNOLOGY LLC**  
**LOGAN 2H PAD**

**SW1/4 SE1/4 SECTION 19 T7N R59W**  
**6th PM WELD COUNTY COLORADO**