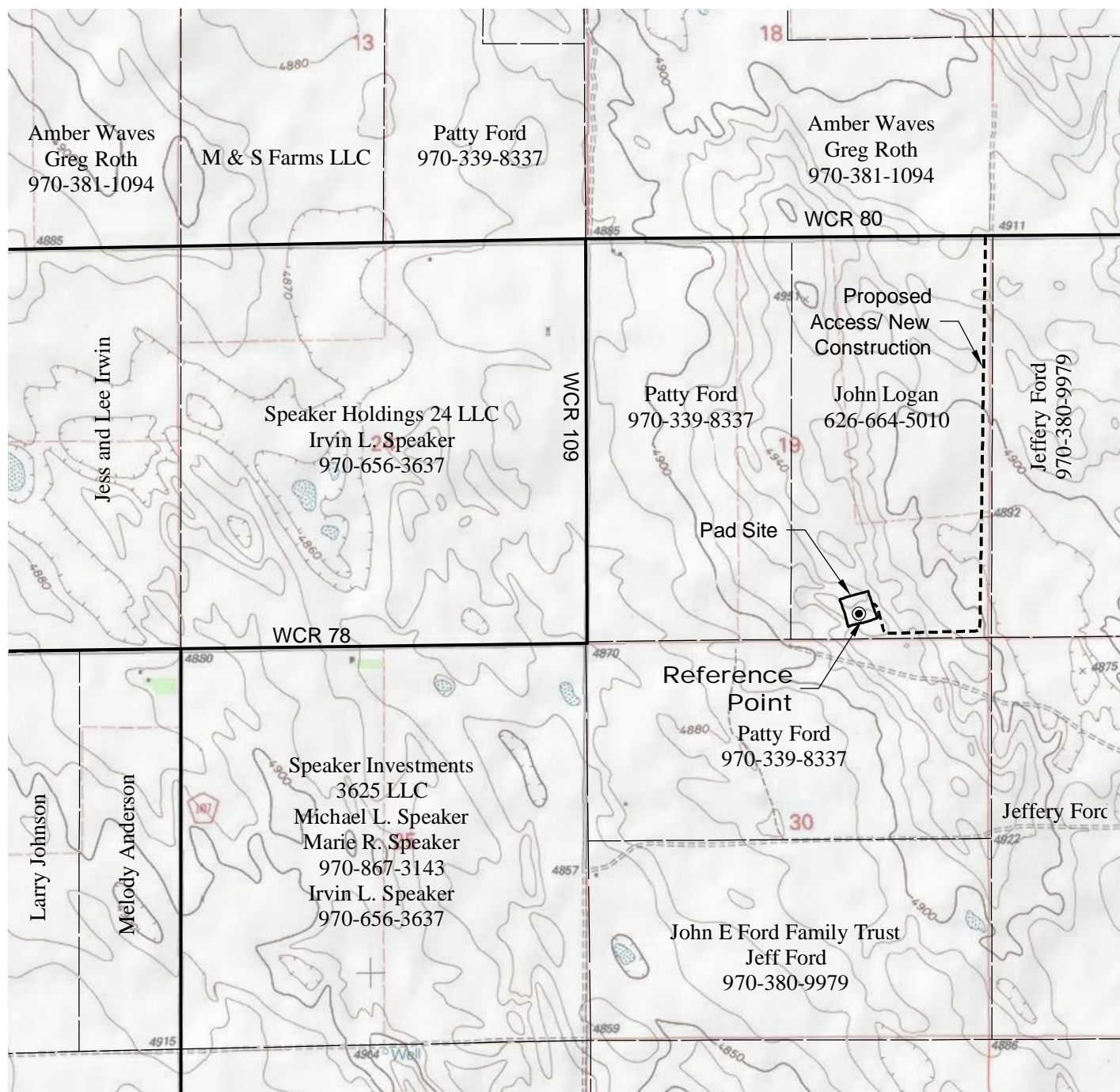


ACCESS ROAD MAP



DRIVING DIRECTIONS:

MP 0.0 - Intersection of Highway 14 a.k.a. WCR 90 & Highway 392 a.k.a. WCR 77 in Briggsdale; East on Highway 14
 MP 13.9 - Right on WCR 105; South along WCR 105
 MP 18.9 - Left on WCR 80; East along WCR 80
 MP 21.9 - Right onto new access to Logan 2H Pad
 MP 23.2 - Logan 2H Pad

9/6/12



North

0 2000 4000

Graphic Scale in Feet
 1" = 2000'



LAND SURVEYING AND MAPPING
 LAFAYETTE - WINTER PARK
 Ph 303 666 0379 Fx 303 665 6320

CONDOR ENERGY TECHNOLOGY LLC
LOGAN 2H PAD

SW1/4 SE1/4 SECTION 19 T7N R59W
6th PM WELD COUNTY COLORADO