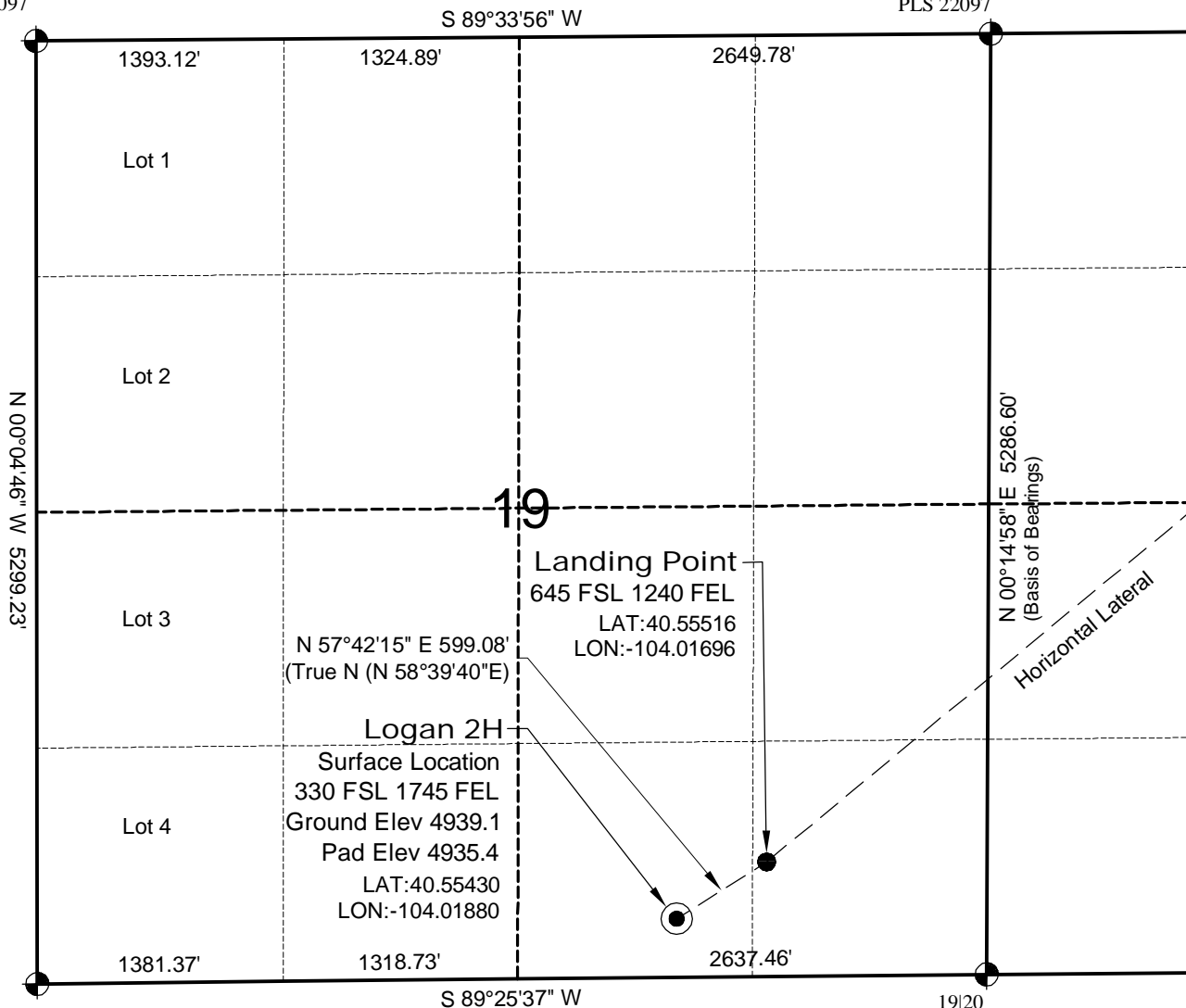


WELL LOCATION MAP

LOGAN 2H PAD

NW Corner
Section 19
Alum. Cap
PLS 22097

18/17
19/20
Alum. Cap
PLS 22097



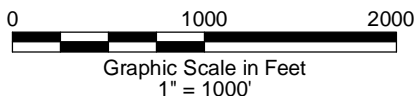
SURVEYOR'S STATEMENT

The undersigned hereby states that the well location shown hereon was staked on the ground based on existing monumentation and/or physical evidence found in the field and is correct to the best of my knowledge, information and belief.

NOTES

- 1.) Horizontal (NAD 83) and vertical (NAVD 88) datum is based on the Leica Geosystems SmartNet of Colorado.
 - 2.) All directions, distances, and dimensions shown hereon are based on coordinates from the "Colorado coordinate system of 1983 north zone" (article 52 of title 38, C.R.S.).
 - 3.) All section line dimensions shown hereon are based on field measurements of existing monuments and/or physical evidence found in the field unless otherwise indicated. Refer to land survey plats deposited in Weld County.
 - 4.) Physical features shown hereon are for graphical representation only.
 - 5.) See Form 2A for visible improvements within 400' of wellhead.
 - 6.) Distances to nearest section lines are measured perpendicularly.
 - 7.) This is not a land survey nor land survey plat.
 - 8.) Date of Survey 8/16/12; Date of Drawing 9/6/12. REV 0
- PDOP Reading: 2.0 Instrument Operator: Marc Woodard

19/20
30/29
Alum. Cap
PLS 29035



GEO SURV

LAND SURVEYING AND MAPPING
LAFAYETTE - WINTER PARK
Ph 303 666 0379 Fx 303 665 6320

CONDOR ENERGY TECHNOLOGY LLC
LOGAN 2H

SL SW1/4 SE1/4 SEC. 19 T7N R59W
HL TD NW1/4 NE1/4 SEC. 20 T7N R59W
6th PM WELD COUNTY COLORADO

HORIZONTAL LATERAL TD MAP

LOGAN 2H PAD

18/17
19/20
Alum. Cap
PLS 22097

NE Corner
Section 20
Alum. Cap
PLS 22097

N 89°32'55" E 5295.94'

Horizontal
Lateral TD
640 FNL
1660 FEL
LAT:40.56603
LON:-103.99910

N 00°14'58" E 5286.60'
(Basis of Bearings)

Horizontal Lateral

N 50°26'42" E 6347.96'
(True N (N 51°24'12" E))

20

N 00°08'48" E 5287.06'

N 89°33'18" E 5305.41'

19/20
30/29
Alum. Cap
PLS 29035

SE Corner
Section 29
Alum. Cap
PLS 29035



North

0 1000 2000

Graphic Scale in Feet
1" = 1000'



LAND SURVEYING AND MAPPING
LAFAYETTE - WINTER PARK
Ph 303 666 0379 Fx 303 665 6320

CONDOR ENERGY TECHNOLOGY LLC
LOGAN 2H

SL SW1/4 SE1/4 SEC. 19 T7N R59W
HL TD NW1/4 NE1/4 SEC. 20 T7N R59W
6th PM WELD COUNTY COLORADO