

Downhole Schematic for PRATT 21-29



Project :DJ Basin

API # :05123324280000

Surface Location :NWNW Sec 29 T1

Area :Wattenberg

County :

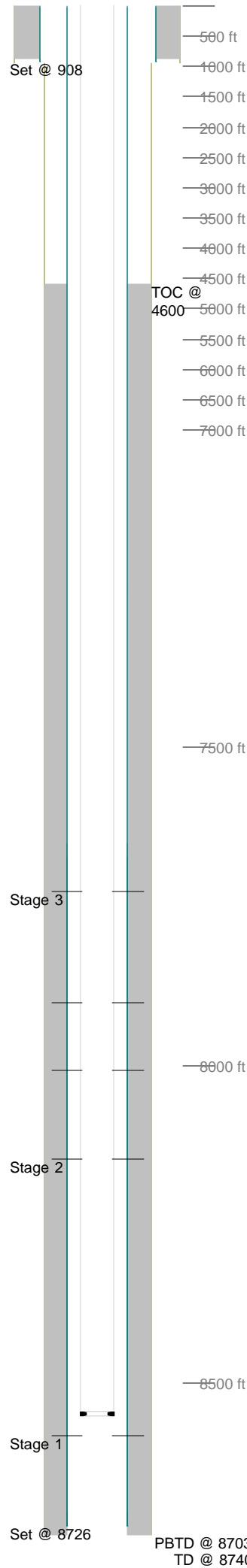
BHL :

As Of : 06/07/2012

GL : 5116.0 ft

KB to GL : 13.0 ft

KB : 5129.0 ft



Casing Details								
Section	Hole	Casing	Mass	Set At	Length	Thread	Grade	Description
Surface	12.250	8.625	24	908	1	ST&C	K55	Guide Shoe
		8.625	24	907	41	ST&C	J-55	SJ/BAFFLE
		8.625	24	866	853	ST&C	J-55	CASING
		8.6.5	24	13	13	ST&C	J-55	Landing Joint
Production	7.875		11.6	8,726	1		K-55	Float Shoe
		4.5	11.6	8,725	21		N-80	Shoe Jt
			11.6	8,704	1		K-55	Float Collar
		4.5	11.6	8,703	1,030		SB-80	Casing
		4.5	11.6	7,672	21		N-80	Marker Jt
		4.5	11.6	7,651	7,638		SB-80	Casing
		4.5	11.6	13	13		SB-80	Landing Jt
Cement Details								
Section	Sequence	Top	Density	Blend / Additives				
Production	Lead	4,600	12.5	Premuim Lite Cmt / +0.1% R-3 + 0.2% CD-32 +0.7% FL-63 + 0.2% ASA-301 + 6% Bentonite + 3 lbs/sx CSE-2				
	Tail	7,250	13.5	(50:50 Poz,Fly Ash / Class G Cmt + 0.1% R-3 + 0.6% FL-63 + 3% Bentonite + 0.1% SM + 20% Silica Flour				
Surface	Lead	0	14.5	TYPE III Cmt Class C / + 0.08 lbs/sk Static Free + 1.5% Calcium Chloride + 0.15 lbs/sk Cello Flake + 60.5% Fresh Water.				
Tubing and Downhole Equipment								
O.D.	Length	Depth	Description					
0.000	11.50	11.50	KB					
2.375	8,534.41	8,545.91	271 JTS 4.7# J55 EUE 8RD					
2.375	2.10	8,548.01	SN & Partial Pump Out Sub					
Perforations								
Stage	1				Stage	3		
	Date	From	To	Shots		Date	From	To
Stage	05/16/2012	8,583	8,603	40		05/20/2012	8,008	8,011
							7,901	7,904
	Date	From	To	Shots		<td>7,727</td> <td>7,728</td>	7,727	7,728
	05/17/2012	8,148	8,162	48				6
Frac Summary								
Stage 1 : 8,583 - 8,603, 40 - 0.420" shots, 3626 bbls of Hybrid, 250520 lbs of 20/40 Sand Report Date: 05/17/2012								
Stage 2 : 8,148 - 8,162, 4048 - 0.420" shots, 3069 bbls of Slickwater, 250000 lbs of 20/40 Sand Report Date: 05/19/2012								
Stage 3 : 7,726 - 8,011, 28 - 0.420" shots, 3231 bbls of Slickwater, 250000 lbs of 30/50 Sand Report Date: 05/20/2012								