

HALLIBURTON

WPX ENERGY ROCKY MOUNTAIN LLC-EBUS

**FED RGU 321-23-298
SULPHUR CREEK
Rio Blanco County , Colorado**

Cement Multiple Stages

23-May-2012

Post Job Report

The Road to Excellence Starts with Safety

Sold To #: 300721	Ship To #: 2926580	Quote #:	Sales Order #: 9506909
Customer: WPX ENERGY ROCKY MOUNTAIN LLC-EBUS	Customer Rep: Ragsdale, Ted		
Well Name: FED RGU	Well #: 321-23-298	API/UWI #: 05-103-11898	
Field: SULPHUR CREEK	City (SAP): MEEKER	County/Parish: Rio Blanco	State: Colorado
Lat: N 39.87 deg. OR N 39 deg. 52 min. 12.94 secs.	Long: W 108.363 deg. OR W -109 deg. 38 min. 12.516 secs.		
Contractor: CYCLONE 29	Rig/Platform Name/Num: CYCLONE 29		
Job Purpose: Cement Multiple Stages			
Well Type: Development Well	Job Type: Cement Multiple Stages		
Sales Person: SCOTT, KYLE	Srv Supervisor: MUHLESTEIN, RYAN	MBU ID Emp #: 453609	

Job Personnel

HES Emp Name	Exp Hrs	Emp #	HES Emp Name	Exp Hrs	Emp #	HES Emp Name	Exp Hrs	Emp #
ANDERSON, ADAM S	13	456683	BURKE, BRENDAN Patrick	4	487782	ENGBERG, KEVIN W	4	454218
LINN, PAUL Andrew	13	479143	LYNGSTAD, FREDRICK D	4	403742	MUHLESTEIN, RYAN Herrick	13	453609
PARKER, BRANDON	13	503646	ROMKEE, DALE Alan	4	488215			

Equipment

HES Unit #	Distance-1 way	HES Unit #	Distance-1 way	HES Unit #	Distance-1 way	HES Unit #	Distance-1 way
10011429	30 mile	10565341	30 mile	10616651C	30 mile	10784064	30 mile
10784080	30 mile	10938657	30 mile	10938677	30 mile	10951250	30 mile
10973565	30 mile	10973571	30 mile	11006314	30 mile	11360883	30 mile
11808827	30 mile	11808837	30 mile	4902	30 mile	4905	30 mile

Job Hours

Date	On Location Hours	Operating Hours	Date	On Location Hours	Operating Hours	Date	On Location Hours	Operating Hours
5/22/12	7	6	5/23/12	6	6			

TOTAL Total is the sum of each column separately

Job

Formation Name	Formation Depth (MD)	Top	Bottom	Form Type	Job depth MD	Job Depth TVD	Water Depth	Perforation Depth (MD)	From	To
				BHST	3400. ft	3400. ft	4. ft			
				115 degF						

Job Times

Date	Time	Time Zone
22 - May - 2012	10:00	MST
22 - May - 2012	17:00	MST
22 - May - 2012	22:31	MST
23 - May - 2012	04:17	GMT
23 - May - 2012	06:00	MST

Well Data

Description	New / Used	Max pressure psig	Size in	ID in	Weight lbm/ft	Thread	Grade	Top MD ft	Bottom MD ft	Top TVD ft	Bottom TVD ft
OPEN HOLE SECTION				13.5				1300.	3400.		
OPEN HOLE SECTION				14.75				.	1300.		
SURFACE CASING	Unknown		9.625	8.921	36.		J-55	.	3393.5		

Tools and Accessories

Type	Size	Qty	Make	Depth	Type	Size	Qty	Make	Depth	Type	Size	Qty	Make
Guide Shoe					Packer					Top Plug			
Float Shoe					Bridge Plug					Bottom Plug			
Float Collar					Retainer					SSR plug set			
Insert Float										Plug Container			
Stage Tool										Centralizers			

Miscellaneous Materials

Gelling Agt	Conc	Surfactant	Conc	Acid Type	Qty	Conc	%
Treatment Fld	Conc	Inhibitor	Conc	Sand Type	Size	Qty	

Fluid Data									
Stage/Plug #: 1									
Fluid #	Stage Type	Fluid Name	Qty	Qty uom	Mixing Density lbm/gal	Yield ft ³ /sk	Mix Fluid Gal/sk	Rate bbl/min	Total Mix Fluid Gal/sk
1	Fresh Water Spacer		20.00	bbl	8.33	.0	.0	3	
2	1st Stage HLC Lead Cement	ECONOCEM (TM) SYSTEM (452992)	640.0	sacks	12.8	1.77	9.37	8	9.37
		9.37 Gal	FRESH WATER						
3	1st Stage Varicem Tail Cement	VARICEM (TM) CEMENT (452009)	200.0	sacks	12.8	1.97	11.07	8	11.07
		11.07 Gal	FRESH WATER						
4	Displacement		261.00	bbl	8.33	.0	.0	8.0	
5	Fresh Water Spacer		20.00	bbl	8.33	.0	.0	3	
6	2nd Stage VariCem Cement	VARICEM (TM) CEMENT (452009)	700.0	sacks	12.8	1.97	11.07	8	11.07
		11.07 Gal	FRESH WATER						
7	Displacement		105.00	bbl	8.33	.0	.0	8.0	
8	HalCem Topout	HALCEM (TM) SYSTEM (452986)	250.0	sacks	15.8	1.15	5.0	3	5.0
		5 Gal	FRESH WATER						
Calculated Values		Pressures		Volumes					
Displacement	3364.9	Shut In: Instant		Lost Returns	125	Cement Slurry	568.8	Pad	
Top Of Cement	SURFACE	5 Min		Cement Returns	60	Actual Displacement	364.9	Treatment	
Frac Gradient		15 Min		Spacers	40	Load and Breakdown		Total Job	923.1
Rates									
Circulating	7	Mixing	8	Displacement	8	Avg. Job	8		
Cement Left In Pipe	Amount	21.8 ft	Reason	Shoe Joint					
Frac Ring # 1 @	ID	Frac ring # 2 @	ID	Frac Ring # 3 @	ID	Frac Ring # 4 @	ID		
The Information Stated Herein Is Correct				Customer Representative Signature					

The Road to Excellence Starts with Safety

Sold To #: 300721	Ship To #: 2926580	Quote #:	Sales Order #: 9506909
Customer: WPX ENERGY ROCKY MOUNTAIN LLC-EBUS	Customer Rep: Ragsdale, Ted		
Well Name: FED RGU	Well #: 321-23-298	API/UWI #:	05-103-11898
Field: SULPHUR CREEK	City (SAP): MEEKER	County/Parish: Rio Blanco	State: Colorado
Legal Description:			
Lat: N 39.87 deg. OR N 39 deg. 52 min. 12.94 secs.		Long: W 108.363 deg. OR W -109 deg. 38 min. 12.516 secs.	
Contractor: CYCLONE 29	Rig/Platform Name/Num: CYCLONE 29		
Job Purpose: Cement Multiple Stages		Ticket Amount:	
Well Type: Development Well	Job Type: Cement Multiple Stages		
Sales Person: SCOTT, KYLE	Srv Supervisor: MUHLESTEIN, RYAN	MBU ID Emp #:	453609

Activity Description	Date/Time	Cht #	Rate bbl/min	Volume bbl		Pressure psig		Comments
				Stage	Total	Tubing	Casing	
Call Out	05/22/2012 10:00							
Pre-Convoy Safety Meeting	05/22/2012 13:00							ALL HES EMPLOYEES, SAFE DRIVING PRACTICES AND TRAVEL ROUTE REVIEWED
Arrive At Loc	05/22/2012 17:00							RIG PULLING DRILL PIPE
Assessment Of Location Safety Meeting	05/22/2012 17:30							ALL HES EMPLOYEES
Rig-Up Equipment	05/22/2012 20:30							1 ELITE HT 400 PUMP, 2 660 BULK TRUCKS, 2 1700 CU. FT. SILOS, 1 F-450 PICK-UP, 1 PLUG CONTAINER, 2" IRON TO STAND PIPE
Circulate Well	05/22/2012 21:30							CASING ON BOTTOM, RIG CIRCULATED, 45 MINS, 7 BPM, 65 PSI. MUD REPORT 8.9 PPG PV 9, YP 6.
Pre-Job Safety Meeting	05/22/2012 22:15							ALL HES EMPLOYEES, RIG CREW, CO REP.
Start Job	05/22/2012 22:31	1						TD 3400', TP 3393.5', FC 3371.7', HOLE 14.75 TO 1300', 13.5" TO TD, 9.625" CSG 36# J55, SJ 21.8'. DV TOOL SET AT 1357.5'
Pump Water	05/22/2012 22:32	2	2	2			133.0	FRESH WATER TO FILL LINES
Pressure Test	05/22/2012 22:33	3						HELD 3437 PSI 2 MINS, NO LEAKS
Pump Spacer 1	05/22/2012 22:37	4	3	20			160.0	FRESH WATER

Sold To #: 300721

Ship To #: 2926580

Quote #:

Sales Order #: 9506909

SUMMIT Version: 7.3.0021

Monday, May 28, 2012 02:30:00

Cementing Job Log

Activity Description	Date/Time	Cht #	Rate bbl/min	Volume bbl		Pressure psig		Comments
				Stage	Total	Tubing	Casing	
Pump 1st Stage Lead Slurry	05/22/2012 22:45	5	8	201.8			415.0	640 SKS 12.8 PPG 1.77 FT3/SK 9.34 GAL/SK WEIGHED VERIFIED VIA MUD SCALES WET AND DRY SAMPLES SUBMITTED. 105 LBS TUF FIBER USED
Pump 1st Stage Tail Slurry	05/22/2012 23:13	6	8	70.2			310.0	200 SKS 12.8 PPG 1.96 FT3/SK 10.95 GAL/SK WEIGHED VERIFIED VIA MUD SCALES WET AND DRY SAMPLES SUBMITTED
Shutdown	05/22/2012 23:22	7						WASH UP ON TOP OF PLUG
Drop Plug	05/22/2012 23:26	8						REMOVE PLUG CONTAINER CAP TO LAUNCH WIPER DART
Pump Displacement	05/22/2012 23:27	9	8	260.6			470.0	FRESH H2O
Slow Rate	05/22/2012 23:40	10	4	94			80.0	10 BBLS PRIOR TO PLUG PASSING THRU TOOL, PUMP 20 BBLS AT 4 BPM, RESUME RATE
Slow Rate	05/23/2012 00:06	11	4	250.6			385.0	10 BBLS PRIOR TO CALCULATED DISPLACEMENT
Bump Plug	05/23/2012 00:09	12	4	260.6			908.0	360 PSI FINAL LIFT PRESSURE
Check Floats	05/23/2012 00:13	13						FLOATS HOLDING, 1 BBL RETURNED BACK TO PUMP
Drop Opening Device For Multiple Stage Cementer	05/23/2012 00:19	14						DROP OPENING DEVICE WAIT 10 MINUTES
Other	05/23/2012 00:29	15						1ST STAGE COMPLETE, PER CO REP NO WAIT BETWEEN STAGES, START 2ND STAGE
Open Multiple Stage Cementer	05/23/2012 00:29	16	0.9	10			450.0	DV TOOL PRESSURED UP TO 440 PSI THEN FELL TO 175 PSI. RETURNS NOTED IN CELLAR
Shutdown	05/23/2012 00:32	17						

Sold To #: 300721

Ship To #: 2926580

Quote #:

Sales Order #: 9506909

SUMMIT Version: 7.3.0021

Monday, May 28, 2012 02:30:00

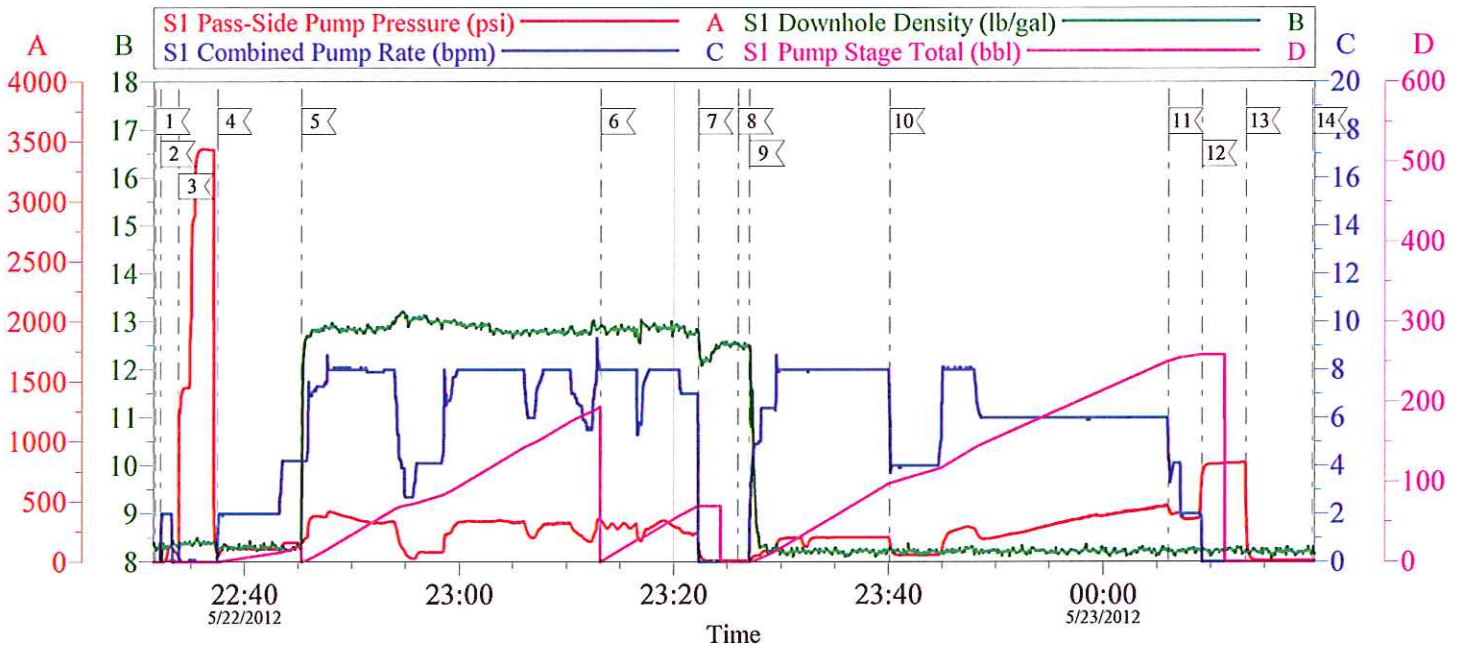
Activity Description	Date/Time	Cht #	Rate bbl/min	Volume bbl		Pressure psig		Comments
				Stage	Total	Tubing	Casing	
Pump Spacer 1	05/23/2012 00:35	18	3	10			295.0	FRESH WATER
Pump 2nd Stage Tail Slurry	05/23/2012 00:41	19	8	245.6			305.0	700 SKS 12.8 PPG 1.96 FT3/SK 10.95 GAL/SK WEIGHED VERIFIED VIA MUD SCALES WET AND DRY SAMPLES SUBMITTED, 45 LBS TUF FIBER IN THE LAST 100 BBLS
Shutdown	05/23/2012 01:14	20						
Drop Plug	05/23/2012 01:15	21						DROP CLOSING PLUG
Pump Displacement	05/23/2012 01:15	22	8	104.9			430.0	PUMPED H2O, GOOD RETURNS T/O DISPLACEMENT. PUMPS HIT KICKOUTS SET TO LOW
Slow Rate	05/23/2012 01:28	23	4	95			330.0	10 BBLS PRIOR TO CALCULATED DISPLACEMENT, CEMENT RETURNS 45 BBLS AWAY, 60 BBLS TO SURFACE
Close Multiple Stage Cementer	05/23/2012 01:30	24	4	104.9			1650.0	360 PSI FINAL LIFT PRESSURE, 1650 PSI TO CLOSE MSC TOOL
Release Casing Pressure	05/23/2012 01:34	25						1 BBL RETURNED BACK TO PUMP
Other	05/23/2012 01:34	26						END OF PRIMARY JOB. WAITING TO TOPOUT
Pump Water	05/23/2012 02:49	27						START TOPOUT, BOOST FRESH H2O WITH 6X5 TO INITIATE FLOW
Pump Cement	05/23/2012 02:59	28	2	12.2		78.0		60 SKS 15.8 PPG 1.15 FT3/SK 5 GAL/SK, PUMPED ON PREVIOUS WELL # 524-14-298, CMT TO SURFACE
Shutdown	05/23/2012 03:05	29						SHUTDOWN
Activity Description	Date/Time	Cht #	Rate bbl/min	Volume bbl		Pressure psig		Comments
				Stage	Total	Tubing	Casing	

Cementing Job Log

Pump Cement	05/23/2012 03:12	30	2	10.2		140.0		50 SKS 15.8 PPG 1.15 FT3/SK 5 GAL/SK, PUMPED ON PREVIOUS WELL # 11-23-298, CMT TO SURFACE
Shutdown	05/23/2012 03:32	31						SHUTDOWN
Pump Cement	05/23/2012 03:45	32	2	12.2		92.0		60 SKS 15.8 PPG 1.15 FT3/SK 5 GAL/SK, PUMPED ON PREVIOUS WELL # 414-14-298, CMT TO SURFACE
Shutdown	05/23/2012 03:55	33						SHUTDOWN
Pump Cement	05/23/2012 04:11	34	2	8.2		146.0		40 SKS 15.8 PPG 1.15 FT3/SK 5 GAL/SK, PUMPED ON WELL # 321-23-298, CMT TO SURFACE
Shutdown	05/23/2012 04:16	35						250 SKS TOPOUT USED ON LOCATION, EXCESS MIXED AND PUMPED TO VAC TRUCK.
End Job	05/23/2012 04:17	36						HES SWAGE AND IRON BASKET, 40 LBS SUGAR, 1 SACK CACL, 10 GALS SUPERFLUSH 100 USED. 2 ADD HRS
Post-Job Safety Meeting (Pre Rig-Down)	05/23/2012 04:25							ALL HES EMPLOYEES
Rig-Down Equipment	05/23/2012 04:30							
Pre-Convoy Safety Meeting	05/23/2012 05:55							ALL HES EMPLOYEES
Crew Leave Location	05/23/2012 06:00							LOCATION WAS AS CLEAN AS WHEN WE ARRIVED, THANK YOU FOR USING HES FROM RYAN MUHLESTEIN AND CREW.

WPX ENERGY ROCKY MTN - FED RGU 321-23-298

9 5/8" SURFACE CASING STAGE 1



Local Event Log

1	START JOB	5/22/2012 22:31:40	2	PRIME LINES	5/22/2012 22:32:08
3	PRESSURE TEST	5/22/2012 22:33:48	4	PUMP H2O SPACER	5/22/2012 22:37:27
5	PUMP LEAD CEMENT	5/22/2012 22:45:19	6	PUMP TAIL CEMENT	5/22/2012 23:13:11
7	SHUTDOWN	5/22/2012 23:22:17	8	DROP WIPER DART	5/22/2012 23:26:00
9	PUMP DISPLACEMENT	5/22/2012 23:27:04	10	SLOW RATE	5/22/2012 23:40:08
11	SLOW RATE	5/23/2012 00:06:04	12	BUMP PLUG	5/23/2012 00:09:12
13	CHECK FLOATS	5/23/2012 00:13:16	14	DROP OPENING PLUG	5/23/2012 00:19:29

Customer: WPX ENERGY ROCKY MTN
Well Description: FED RGU 321-23-298
Company Rep: TED RAGSDALE

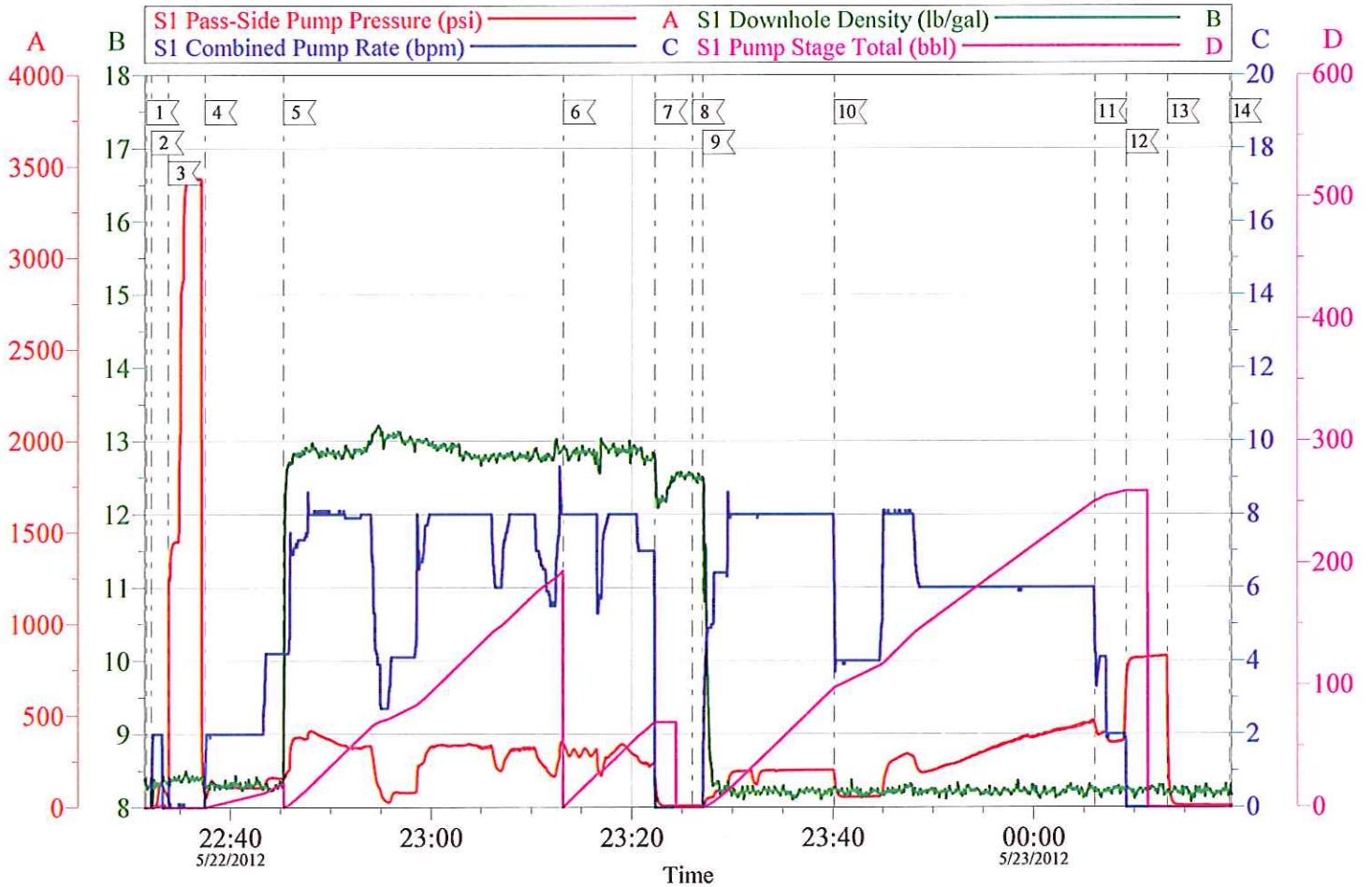
Job Date: 22-May-2012
Job Type: 2-STAGE SURFACE
Cement Supervisor: RYAN MUHLESTEIN

Sales Order #: 9506909
ADC Used: YES
ELITE: 4 ADAM ANDERSON

OptiCem v6.4.10
23-May-12 02:16

WPX ENERGY ROCKY MTN - FED RGU 321-23-298

9 5/8" SURFACE CASING STAGE 1

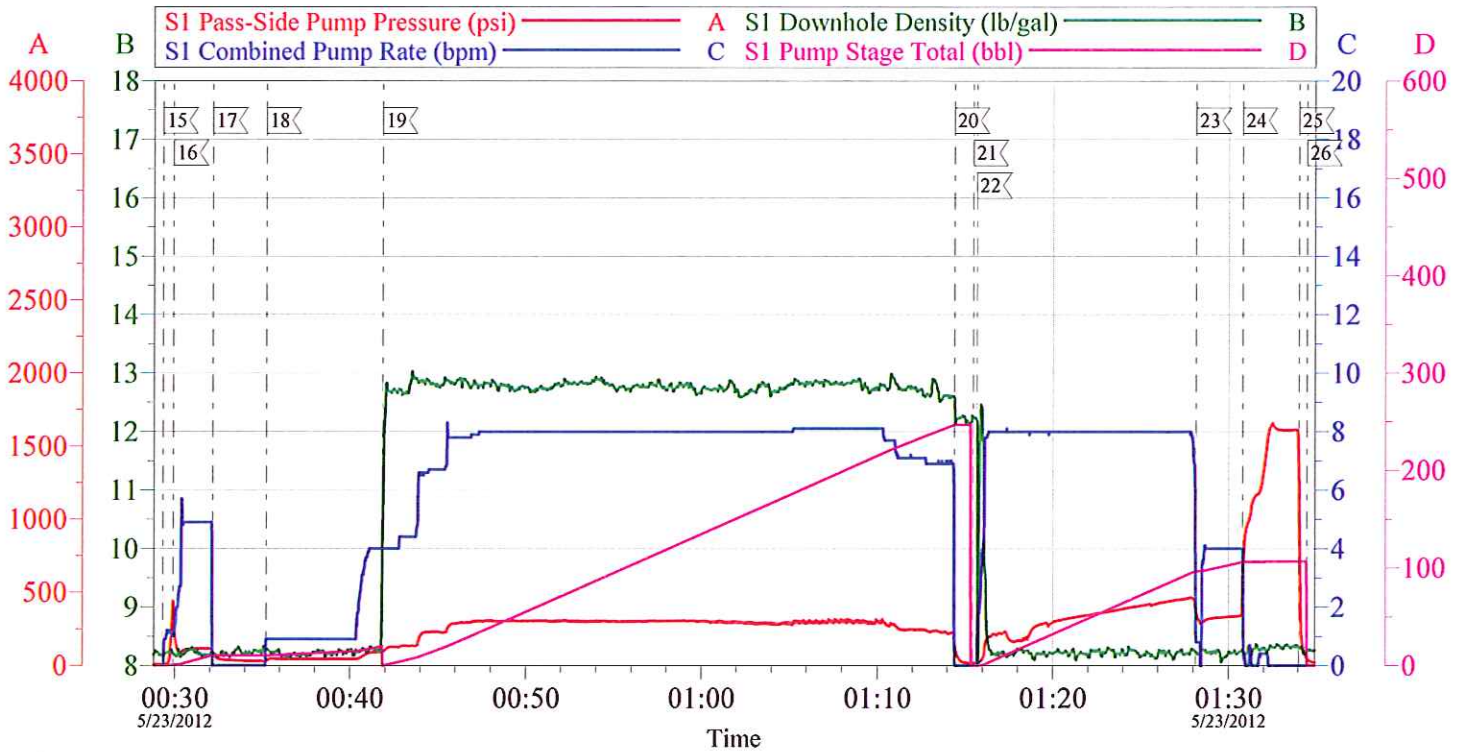


Customer:	WPX ENERGY ROCKY MTN	Job Date:	22-May-2012	Sales Order #:	9506909
Well Description:	FED RGU 321-23-298	Job Type:	2-STAGE SURFACE	ADC Used:	YES
Company Rep:	TED RAGSDALE	Cement Supervisor:	RYAN MUHLESTEIN	ELITE:	4
				ADAM ANDERSON	

OptiCem v6.4.10
23-May-12 02:17

WPX ENERGY ROCKY MTN - FED RGU 321-23-298

9 5/8" SURFACE CASING STAGE 2



Local Event Log

15 START SECOND STAGE	00:29:19	16 OPEN DV TOOL	00:29:54	17 SHUTDOWN	00:32:09
18 PUMP H2O SPACER	00:35:13	19 PUMP TAIL CEMENT	00:41:50	20 SHUTDOWN	01:14:23
21 DROP CLOSING PLUG	01:15:28	22 PUMP DISPLACEMENT	01:15:40	23 SLOW RATE	01:28:09
24 BUMP PLUG	01:30:47	25 RELEASE PRESSURE	01:34:01	26 END PRIMARY JOB	01:34:29

Customer: WPX ENERGY ROCKY MTN
Well Description: FED RGU 321-23-298
Company Rep: TED RAGSDALE

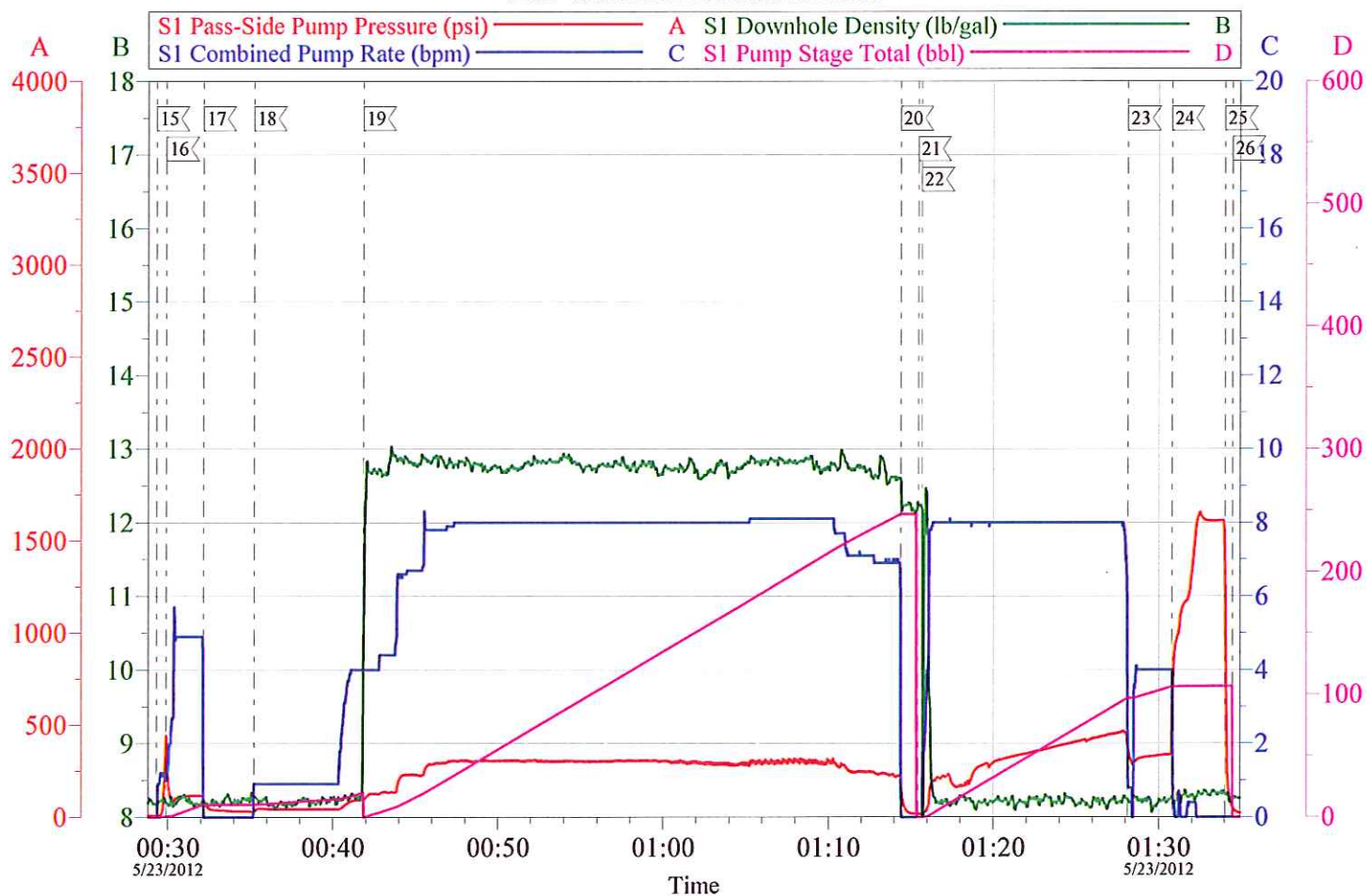
Job Date: 22-May-2012
Job Type: 2-STAGE SURFACE
Cement Supervisor: RYAN MUHLESTEIN

Sales Order #: 9506909
ADC Used: YES
ELITE: 4 ADAM ANDERSON

OptiCem v6.4.10
23-May-12 02:27

WPX ENERGY ROCKY MTN - FED RGU 321-23-298

9 5/8" SURFACE CASING STAGE 2

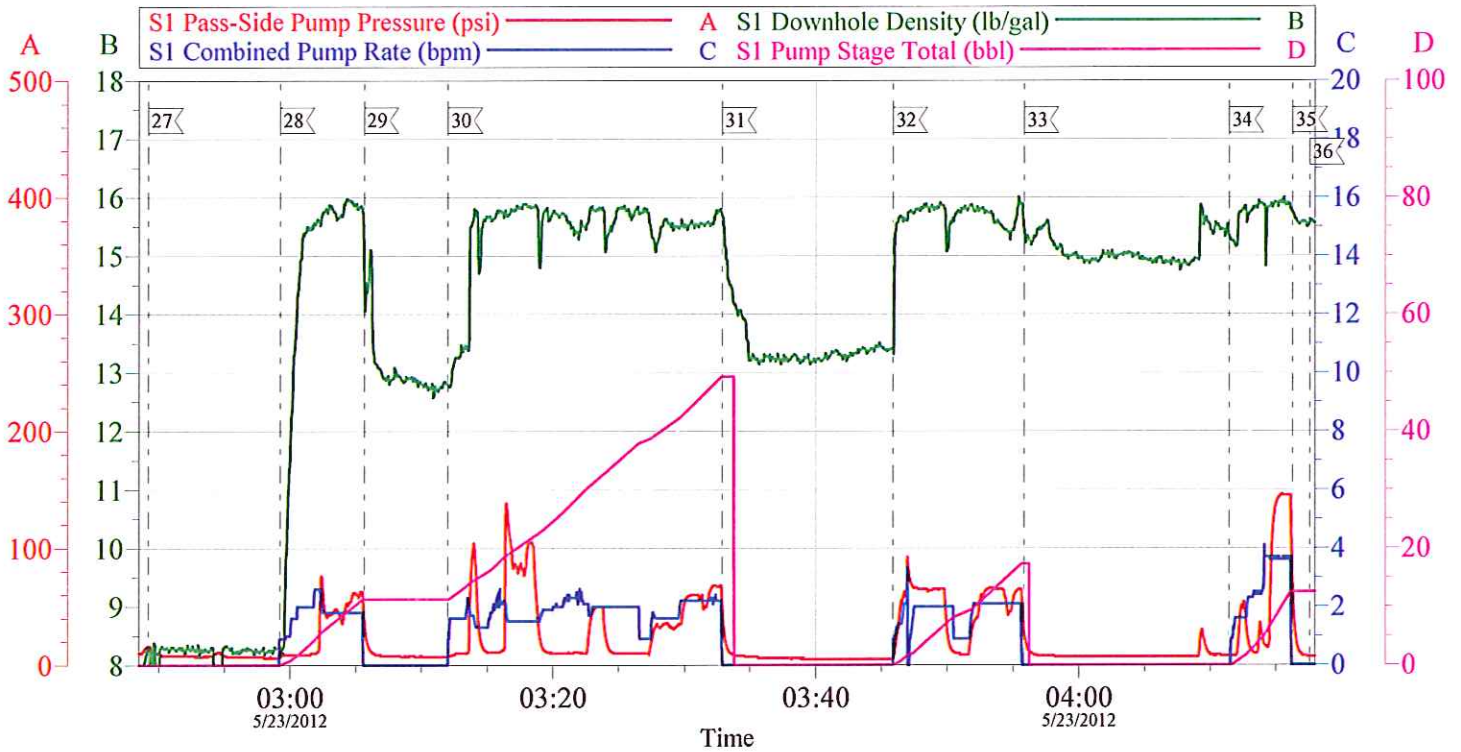


Customer: WPX ENERGY ROCKY MTN	Job Date: 22-May-2012	Sales Order #: 9506909
Well Description: FED RGU 321-23-298	Job Type: 2-STAGE SURFACE	ADC Used: YES
Company Rep: TED RAGSDALE	Cement Supervisor: RYAN MUHLESTEIN	ELITE: 4 ADAM ANDERSON

OptiCem v6.4.10
23-May-12 02:28

WPX ENERGY ROCKY MTN - FED RGU 321-23-298

TOPOUT 1-4



Local Event Log					
27	START TOPOUT	02:49:13	28	PUMP CEMENT	02:59:15
29	SHUTDOWN	03:05:38	30	PUMP CEMENT	03:12:01
31	SHUTDOWN	03:32:52	32	PUMP CEMENT	03:45:53
33	SHUTDOWN	03:55:49	34	PUMP CEMENT	04:11:26
35	SHUTDOWN	04:16:16	36	END JOB	04:17:34

Customer: WPX ENERGY ROCKY MTN	Job Date: 22-May-2012	Sales Order #: 9506909
Well Description: FED RGU 321-23-298	Job Type: TOPOUT	ADC Used: YES
Company Rep: TED RAGSDALE	Cement Supervisor: RYAN MUHLESTEIN	ELITE: 4 ADAM ANDERSON

OptiCem v6.4.10
23-May-12 04:40