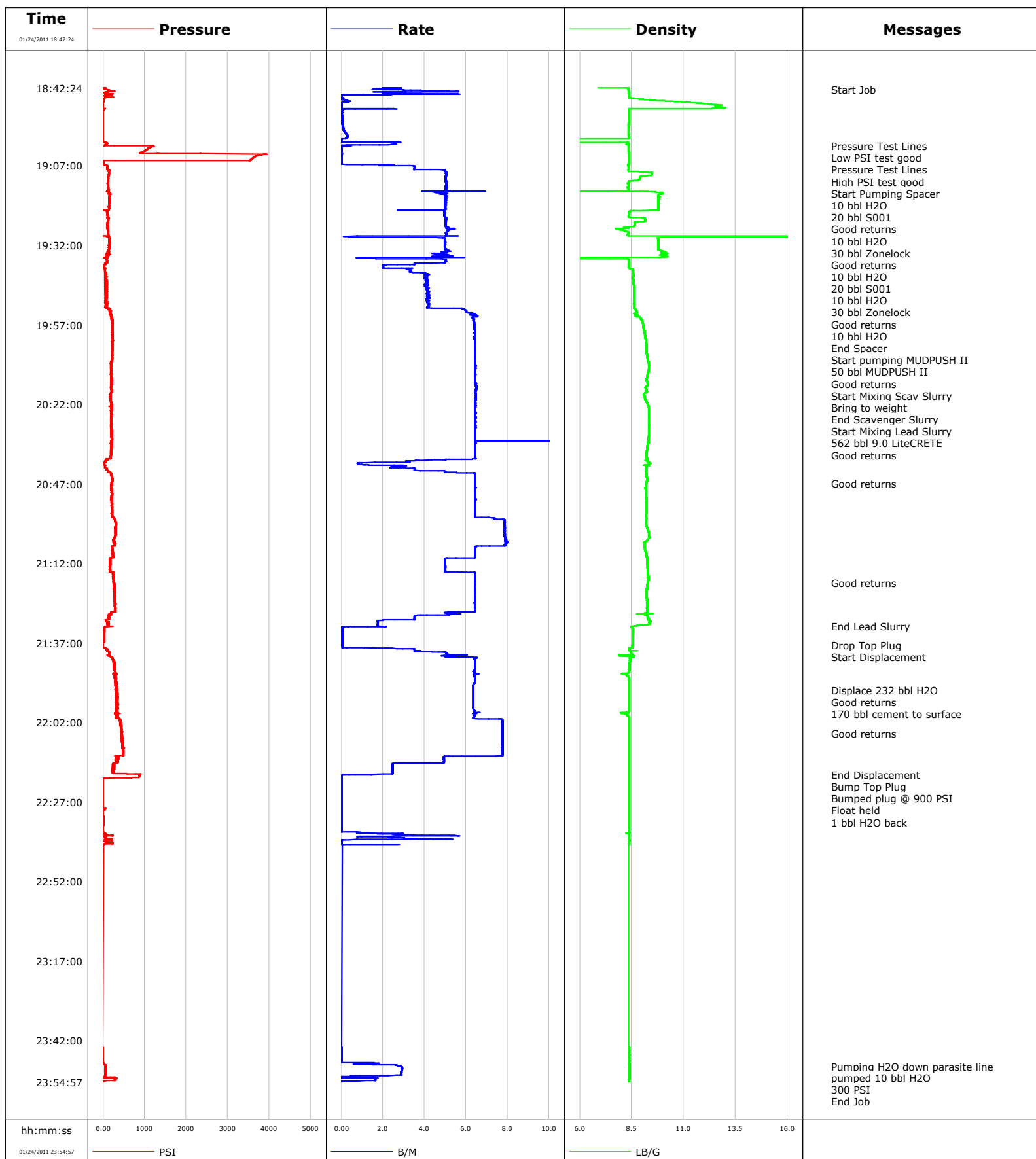


Well SGU 8515B-24 F25 496
Field Story Gulch
Engineer Matt Fair
Country United States

Client Encana
SIR No. BJ90-00145
Job Type 9 5/8 Surface
Job Date 01-24-2011



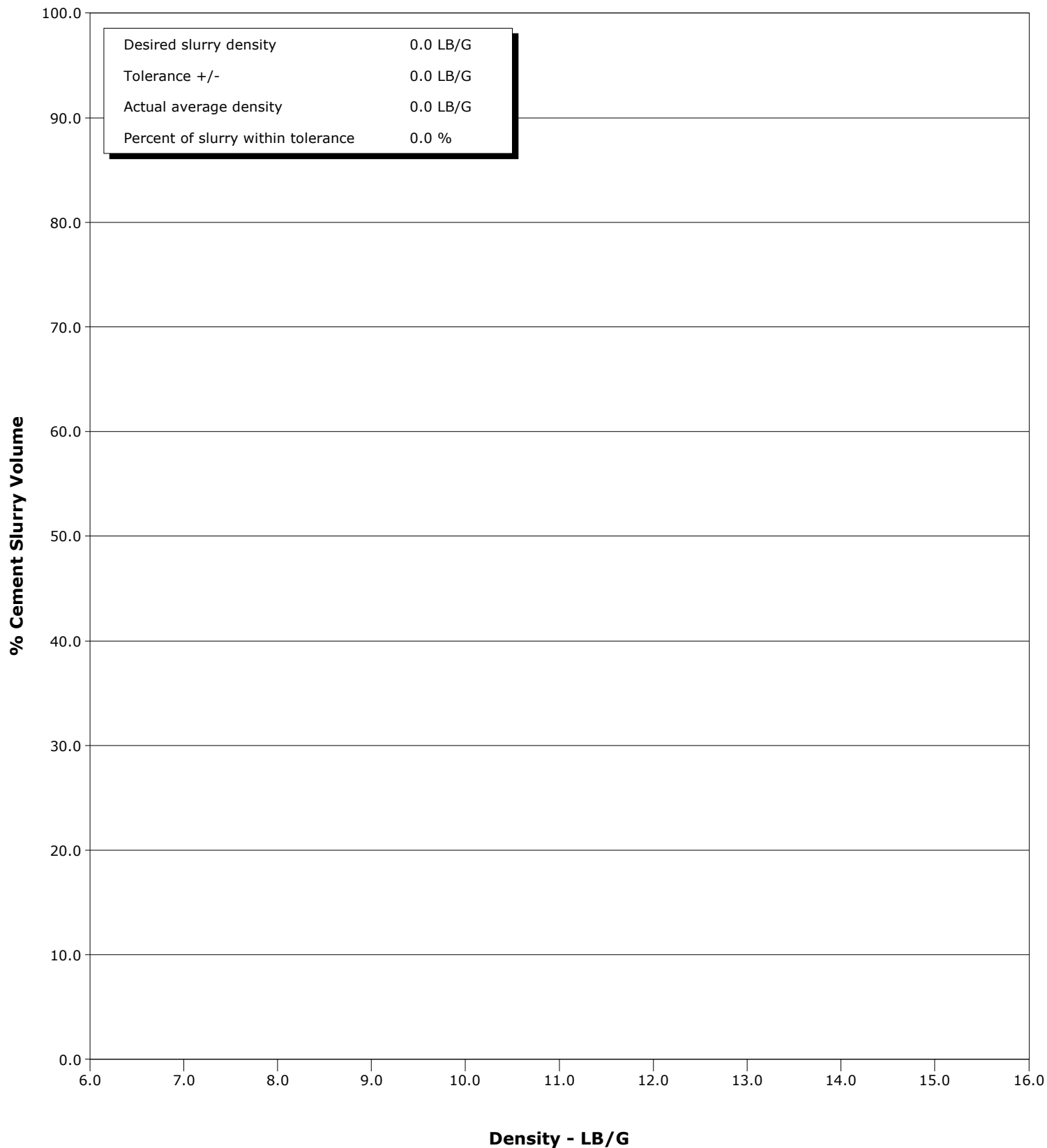
Schlumberger

Cementing Qa/Qc Density Report

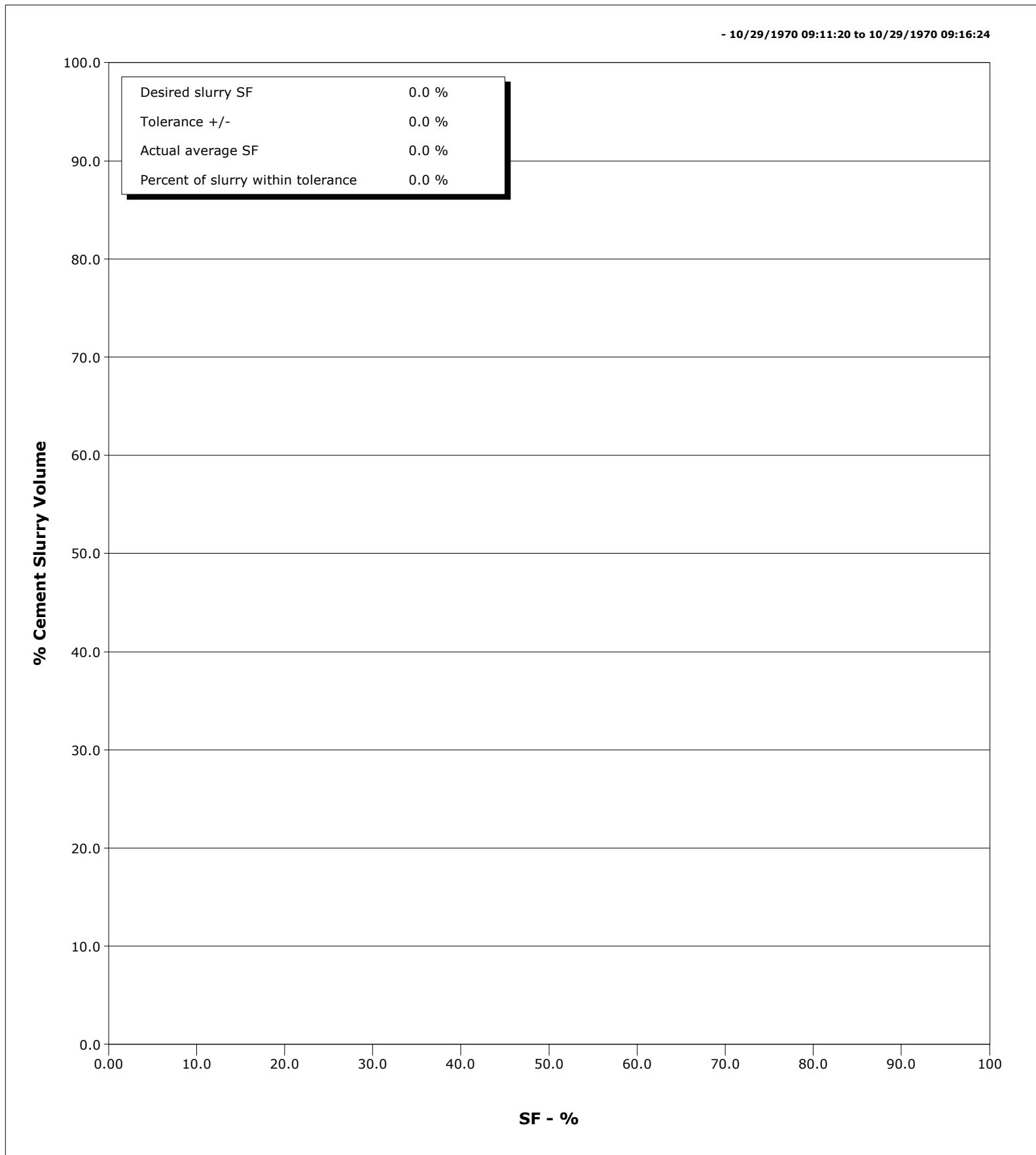
Well SGU 8515B-24 F25 496
Field Story Gulch
Engineer Matt Fair
Country United States

Client Encana
SIR No. BJ90-00145
Job Type 9 5/8 Surface
Job Date 01-24-2011

- 10/29/1970 09:11:20 to 10/29/1970 09:16:24



Well	SGU 8515B-24 F25 496	Client	Encana
Field	Story Gulch	SIR No.	BJ90-00145
Engineer	Matt Fair	Job Type	9 5/8 Surface
Country	United States	Job Date	01-24-2011





Cementing Service Report

				Customer Encana		Job Number BJ90-00145		
Well SGU 8515B-24 F25 496			Location (legal)		Schlumberger Location		Job Start Jan/24/2011	
Field Story Gulch		Formation Name/Type Shale		Deviation	Bit Size 14.8 in	Well MD 3040.0 ft	Well TVD 3040.0 ft	
County Garfield		State/Province Colorado		BHP	BHST 115 degF	BHCT 95 degF	Pore Press. Gradient	
Well Master 0631238400		API/UWI						
Rig Name Patterson 306		Drilled For Gas	Service Via Land	Casing/Liner				
				Depth, ft	Size, in	Weight, lb/ft	Grade	Thread
Offshore Zone		Well Class New	Well Type Exploration	120.0	20.000	94.0	N/A	N/A
				3040.0	9.630	36.0	J55	8RD
Drilling Fluid Type Bentonite		Max. Density 9.00 lb/gal	Plastic Viscosity	Tubing/Drill Pipe				
				Depth,	Size,	Weight,	Grade	Thread
Service Line Cementing		Job Type 9 5/8 Surface						
Max. Allowed Tub. Press 3520 psi		Max. Allowed Ann. Press 2030 psi	WH Connection 9 5/8	Perforations/Open Hole				
				Top,	Bottom,		No. of Shots	Total Interval
								Diameter
				Treat Down Casing	Displacement 232.0 bbl	Packer Type	Packer Depth	
				Tubing Vol.	Casing Vol. 236.0 bbl	Annular Vol. 386.0 bbl	Openhole Vol. 638.0 bbl	
Casing/Tubing Secured <input checked="" type="checkbox"/>		1 Hole Vol. Circulated prior to Cement <input checked="" type="checkbox"/>		Casing Tools		Squeeze Job		
Lift Pressure 1504 psi				Shoe Type Float		Squeeze Type		
Pipe Rotated <input type="checkbox"/>		Pipe Reciprocated <input type="checkbox"/>		Shoe Depth 3040.0 ft		Tool Type		
No. Centralizers 32		Top Plugs 1	Bottom Plugs 0	Stage Tool Type		Tool Depth		
Cement Head Type Single				Stage Tool Depth		Tail Pipe Size		
Job Scheduled For Jan/24/2011 15:00		Arrived on Location Jan/24/2011 15:00		Leave Location Jan/24/2011 22:00		Collar Type Guide		Tail Pipe Depth
						Collar Depth 2994.0 ft		Sqz. Total Vol.
Date	Time 24-hr clock	Treating Pressure PSI	Flow Rate B/M	Density LB/G	Volume BBL	Message		
01/24/2011	17:57:31					Started Acquisition		
01/24/2011	18:00:34					Rig up per STD 5		
01/24/2011	18:00:35					Safety meeting		
01/24/2011	18:42:24	9	2.8	6.90	0.0			
01/24/2011	18:42:31	56	2.9	8.35	0.3			
01/24/2011	18:42:55					Start Job		
01/24/2011	18:42:55	59	2.0	8.33	1.3			
01/24/2011	18:44:11	97	3.3	8.35	5.4			
01/24/2011	18:45:51	23	0.0	8.68	7.3			
01/24/2011	18:47:31	-1	0.0	12.14	7.5			
01/24/2011	18:49:11	9	0.7	8.35	7.9			
01/24/2011	18:50:51	-2	0.0	8.36	7.9			
01/24/2011	18:52:31	-2	0.0	8.36	7.9			
01/24/2011	18:54:11	-2	0.1	8.35	8.0			
01/24/2011	18:55:51	-2	0.1	8.35	8.2			
01/24/2011	18:57:31	-2	0.3	8.36	8.5			
01/24/2011	18:59:11	-7	0.0	0.38	8.8			
01/24/2011	19:00:41					Pressure Test Lines		
01/24/2011	19:00:41	28	0.0	8.35	11.0			
01/24/2011	19:00:42					Low PSI test good		
01/24/2011	19:00:42	28	0.0	8.35	11.0			

Well SGU 8515B-24 F25 496			Field Story Gulch	Job Start Jan/24/2011	Customer Encana	Job Number BJ90-00145
Date	Time 24-hr clock	Treating Pressure PSI	Flow Rate B/M	Density LB/G	Volume BBL	Message
01/24/2011	19:02:31	972	0.0	8.36	11.1	
01/24/2011	19:03:44					Pressure Test Lines
01/24/2011	19:03:44	3718	0.0	8.36	11.1	
01/24/2011	19:03:45					High PSI test good
01/24/2011	19:03:45	3712	0.0	8.36	11.1	
01/24/2011	19:04:11	3643	0.0	8.36	11.1	
01/24/2011	19:05:51	2	0.0	8.36	11.1	
01/24/2011	19:06:50					Start Pumping Spacer
01/24/2011	19:06:50	97	1.8	8.35	11.7	
01/24/2011	19:06:51					10 bbl H2O
01/24/2011	19:06:51	72	1.8	8.35	11.7	
01/24/2011	19:07:31	98	3.5	8.35	13.9	
01/24/2011	19:08:53					20 bbl S001
01/24/2011	19:08:53	132	5.0	8.91	19.7	
01/24/2011	19:09:11	138	5.0	9.49	21.2	
01/24/2011	19:10:51	127	5.0	8.90	29.6	
01/24/2011	19:11:52					Good returns
01/24/2011	19:11:52	113	5.1	8.36	34.7	
01/24/2011	19:12:31	117	5.0	8.33	38.0	
01/24/2011	19:12:54					10 bbl H2O
01/24/2011	19:12:54	111	5.0	8.35	39.9	
01/24/2011	19:14:11	125	5.1	8.32	46.4	
01/24/2011	19:15:40					30 bbl Zonelock
01/24/2011	19:15:40	152	5.1	9.90	53.8	
01/24/2011	19:15:51	147	4.7	9.95	54.7	
01/24/2011	19:17:31	146	5.0	9.77	63.0	
01/24/2011	19:18:10					Good returns
01/24/2011	19:18:10	150	5.0	9.77	66.3	
01/24/2011	19:19:11	140	5.0	9.77	71.3	
01/24/2011	19:20:51	129	5.0	9.77	79.7	
01/24/2011	19:20:58					10 bbl H2O
01/24/2011	19:20:58	116	4.0	9.78	80.1	
01/24/2011	19:22:31	110	5.0	8.35	87.8	
01/24/2011	19:23:04					20 bbl S001
01/24/2011	19:23:04	110	5.0	8.35	90.5	
01/24/2011	19:24:11	126	5.0	9.15	96.1	
01/24/2011	19:25:51	104	5.0	8.64	104.5	
01/24/2011	19:27:17					10 bbl H2O
01/24/2011	19:27:17	116	5.1	8.12	111.8	
01/24/2011	19:27:31	114	5.1	8.16	113.0	
01/24/2011	19:28:58					30 bbl Zonelock
01/24/2011	19:28:58	118	5.0	8.35	120.3	
01/24/2011	19:29:11	76	0.1	25.00	120.9	
01/24/2011	19:29:19					Good returns
01/24/2011	19:29:19	130	0.4	25.00	121.0	
01/24/2011	19:30:51	144	5.0	9.77	127.7	
01/24/2011	19:32:31	141	5.0	9.77	136.0	
01/24/2011	19:34:11	132	4.9	9.91	144.4	
01/24/2011	19:35:51					10 bbl H2O
01/24/2011	19:35:51	8	0.8	4.75	152.1	
01/24/2011	19:36:42					End Spacer
01/24/2011	19:36:42	96	5.0	8.36	155.2	
01/24/2011	19:37:31	57	4.9	8.37	159.3	
01/24/2011	19:38:58					Start pumping MUDPUSH II

Well			Field		Job Start	Customer	Job Number
SGU 8515B-24 F25 496			Story Gulch		Jan/24/2011	Encana	BJ90-00145
Date	Time 24-hr clock	Treating Pressure PSI	Flow Rate B/M	Density LB/G	Volume BBL	Message	
01/24/2011	19:38:58	20	2.0	8.36	163.1		
01/24/2011	19:39:11	53	3.3	8.39	163.6		
01/24/2011	19:39:32					Good returns	
01/24/2011	19:39:32	37	3.2	8.54	164.7		
01/24/2011	19:40:51	55	4.1	8.57	169.3		
01/24/2011	19:42:31	49	4.1	8.57	176.1		
01/24/2011	19:44:11	100	4.1	8.59	183.0		
01/24/2011	19:45:51	58	4.1	8.60	189.9		
01/24/2011	19:47:31	84	4.1	8.61	196.8		
01/24/2011	19:49:11	76	4.2	8.62	203.7		
01/24/2011	19:50:51	56	4.2	8.62	210.7		
01/24/2011	19:52:31	173	6.0	8.71	219.0		
01/24/2011	19:53:03					Start Mixing Scav Slurry	
01/24/2011	19:53:03	164	6.1	8.74	222.2		
01/24/2011	19:53:08					Bring to weight	
01/24/2011	19:53:08	174	6.1	8.74	222.7		
01/24/2011	19:54:11	209	6.6	8.66	229.3		
01/24/2011	19:54:57					End Scavenger Slurry	
01/24/2011	19:54:57	209	6.3	8.93	234.2		
01/24/2011	19:54:58					Start Mixing Lead Slurry	
01/24/2011	19:54:58	211	6.3	8.93	234.3		
01/24/2011	19:55:00					562 bbl 9.0 LiteCRETE	
01/24/2011	19:55:00					Good returns	
01/24/2011	19:55:00	217	6.3	8.94	234.5		
01/24/2011	19:55:51	221	6.4	9.01	239.9		
01/24/2011	19:57:31	219	6.4	9.06	250.6		
01/24/2011	19:59:11	217	6.4	9.11	261.3		
01/24/2011	20:00:51	233	6.4	9.15	272.0		
01/24/2011	20:02:31	230	6.4	9.19	282.7		
01/24/2011	20:04:11	216	6.4	9.21	293.4		
01/24/2011	20:05:51	214	6.4	9.23	304.1		
01/24/2011	20:07:31	224	6.4	9.26	314.8		
01/24/2011	20:09:11	188	6.4	9.31	325.5		
01/24/2011	20:10:51	197	6.4	9.32	336.3		
01/24/2011	20:12:31	206	6.4	9.27	347.0		
01/24/2011	20:14:11	207	6.4	9.23	357.8		
01/24/2011	20:15:51	201	6.5	9.28	368.5		
01/24/2011	20:17:31	210	6.5	9.22	379.3		
01/24/2011	20:19:11	168	6.5	9.09	390.1		
01/24/2011	20:20:51	187	6.5	9.19	400.8		
01/24/2011	20:22:31	203	6.4	9.29	411.6		
01/24/2011	20:24:11	199	6.5	9.33	422.3		
01/24/2011	20:25:51	192	6.5	9.32	433.1		
01/24/2011	20:27:31	190	6.4	9.32	443.8		
01/24/2011	20:29:11	195	6.5	9.33	454.6		
01/24/2011	20:30:51	202	6.4	9.32	465.3		
01/24/2011	20:32:31	200	6.4	9.30	476.0		
01/24/2011	20:34:11	196	6.5	9.31	494.5		
01/24/2011	20:35:51	193	6.4	9.25	505.3		
01/24/2011	20:37:31	190	6.5	9.22	516.0		
01/24/2011	20:39:11	80	6.3	9.23	526.7		
01/24/2011	20:40:51	16	0.8	9.32	531.3		
01/24/2011	20:42:31	89	3.5	9.21	535.7		
01/24/2011	20:44:11	192	6.5	9.21	544.7		

Well SGU 8515B-24 F25 496			Field Story Gulch	Job Start Jan/24/2011	Customer Encana	Job Number BJ90-00145
Date	Time 24-hr clock	Treating Pressure PSI	Flow Rate B/M	Density LB/G	Volume BBL	Message
01/24/2011	20:46:51					Good returns
01/24/2011	20:46:51	207	6.4	9.20	561.9	
01/24/2011	20:47:31	206	6.4	9.17	566.2	
01/24/2011	20:49:11	204	6.4	9.17	576.9	
01/24/2011	20:50:51	209	6.4	9.19	587.6	
01/24/2011	20:52:31	207	6.4	9.20	598.4	
01/24/2011	20:54:11	217	6.4	9.20	609.1	
01/24/2011	20:55:51	216	6.4	9.20	619.9	
01/24/2011	20:57:31	256	6.7	9.18	630.6	
01/24/2011	20:59:11	307	7.9	9.18	643.3	
01/24/2011	21:00:51	288	7.9	9.25	656.4	
01/24/2011	21:02:31	304	7.9	9.32	669.5	
01/24/2011	21:04:11	255	7.9	9.31	682.6	
01/24/2011	21:05:51	262	7.9	9.12	695.9	
01/24/2011	21:07:31	215	6.4	9.13	707.6	
01/24/2011	21:09:11	227	6.4	9.21	718.3	
01/24/2011	21:10:51	167	5.0	9.25	728.2	
01/24/2011	21:12:31	169	5.0	9.25	736.5	
01/24/2011	21:14:11	161	5.0	9.27	744.8	
01/24/2011	21:15:51	246	6.4	9.28	754.8	
01/24/2011	21:17:31	257	6.4	9.29	765.5	
01/24/2011	21:18:00					Good returns
01/24/2011	21:18:00	257	6.4	9.28	768.6	
01/24/2011	21:19:11	271	6.4	9.25	776.2	
01/24/2011	21:20:51	284	6.4	9.23	786.9	
01/24/2011	21:22:31	280	6.4	9.24	797.6	
01/24/2011	21:24:11	276	6.4	9.24	808.3	
01/24/2011	21:25:51	292	6.4	9.24	819.0	
01/24/2011	21:27:31	202	5.0	9.22	829.3	
01/24/2011	21:29:11	137	3.5	9.29	836.4	
01/24/2011	21:30:51	117	1.8	9.37	840.3	
01/24/2011	21:31:41					End Lead Slurry
01/24/2011	21:31:41	135	1.7	8.62	841.8	
01/24/2011	21:32:31	30	0.1	8.56	842.2	
01/24/2011	21:34:11	15	0.0	8.55	842.3	
01/24/2011	21:35:51	16	0.0	8.54	842.3	
01/24/2011	21:37:31	-2	0.0	8.53	842.4	
01/24/2011	21:37:45					Drop Top Plug
01/24/2011	21:37:45	-2	0.0	8.53	842.4	
01/24/2011	21:37:46					Start Displacement
01/24/2011	21:37:46	-3	0.0	8.53	842.4	
01/24/2011	21:39:11	86	3.5	8.39	844.5	
01/24/2011	21:40:51	138	5.3	8.12	852.2	
01/24/2011	21:42:31	236	6.4	8.40	862.2	
01/24/2011	21:44:11	265	6.4	8.39	872.9	
01/24/2011	21:45:51	282	6.4	8.37	883.6	
01/24/2011	21:47:31	304	6.4	8.30	894.3	
01/24/2011	21:49:11	293	6.4	8.37	905.0	
01/24/2011	21:50:51	311	6.4	8.37	915.6	
01/24/2011	21:51:48					Displace 232 bbl H2O
01/24/2011	21:51:48					Good returns
01/24/2011	21:51:48	340	6.3	8.37	921.7	
01/24/2011	21:51:49					170 bbl cement to surface
01/24/2011	21:51:49	306	6.3	8.37	921.8	

Well			Field		Job Start		Customer		Job Number	
SGU 8515B-24 F25 496			Story Gulch		Jan/24/2011		Encana		BJ90-00145	
Date	Time 24-hr clock	Treating Pressure PSI	Flow Rate B/M	Density LB/G	Volume BBL	Message				
01/24/2011	21:54:11	314	6.4	8.37	936.8					
01/24/2011	21:55:51	318	6.3	8.37	947.4					
01/24/2011	21:57:31	312	6.3	8.37	957.9					
01/24/2011	21:59:11	375	6.4	8.00	968.6					
01/24/2011	22:00:51	392	7.4	8.37	979.3					
01/24/2011	22:02:31	427	7.8	8.37	992.2					
01/24/2011	22:04:11	429	7.8	8.37	1005.1					
01/24/2011	22:05:19					Good returns				
01/24/2011	22:05:19	456	7.8	8.37	1013.9					
01/24/2011	22:05:51	452	7.8	8.37	1018.0					
01/24/2011	22:07:31	467	7.8	8.37	1031.0					
01/24/2011	22:09:11	472	7.8	8.37	1043.9					
01/24/2011	22:10:51	490	7.8	8.37	1056.8					
01/24/2011	22:12:31	383	5.8	8.37	1069.7					
01/24/2011	22:14:11	356	4.9	8.37	1077.9					
01/24/2011	22:15:51	260	2.5	8.37	1083.4					
01/24/2011	22:17:31	260	2.5	8.37	1087.5					
01/24/2011	22:18:15					End Displacement				
01/24/2011	22:18:15	868	1.4	8.37	1089.3					
01/24/2011	22:18:16					Bump Top Plug				
01/24/2011	22:18:16	868	1.4	8.37	1089.3					
01/24/2011	22:18:18					Bumped plug @ 900 PSI				
01/24/2011	22:18:18					Float held				
01/24/2011	22:18:18					1 bbl H2O back				
01/24/2011	22:18:18	872	0.4	8.37	1089.3					
01/24/2011	22:19:11	865	0.0	8.37	1089.4					
01/24/2011	22:20:51	-4	0.0	8.37	1089.4					
01/24/2011	22:22:31	-5	0.0	8.37	1089.4					
01/24/2011	22:24:11	-6	0.0	8.38	1089.4					
01/24/2011	22:25:51	-5	0.0	8.38	1089.4					
01/24/2011	22:27:31	-5	0.0	8.38	1089.4					
01/24/2011	22:29:11	34	0.0	8.37	1089.4					
01/24/2011	22:30:51	-6	0.0	8.38	1089.4					
01/24/2011	22:32:31	2	0.0	8.38	1089.4					
01/24/2011	22:34:11	1	0.0	8.38	1089.4					
01/24/2011	22:35:51	-4	0.0	8.38	1089.4					
01/24/2011	22:37:31	231	5.2	8.37	1091.8					
01/24/2011	22:39:11	209	0.0	8.38	1095.5					
01/24/2011	23:44:11	-3	0.0	8.38	1095.7					
01/24/2011	23:45:51	-3	0.0	8.38	1095.7					
01/24/2011	23:47:31	-3	0.0	8.38	1095.7					
01/24/2011	23:49:11	9	1.3	8.39	1096.0					
01/24/2011	23:50:09					Pumping H2O down parasite line				
01/24/2011	23:50:09	48	2.9	8.39	1098.0					
01/24/2011	23:50:51	51	2.9	8.39	1100.0					
01/24/2011	23:52:31	51	2.9	8.39	1104.9					
01/24/2011	23:53:35					pumped 10 bbl H2O				
01/24/2011	23:53:35	44	0.6	8.39	1106.6					
01/24/2011	23:53:51					300 PSI				
01/24/2011	23:53:51	301	1.7	8.38	1106.7					
01/24/2011	23:54:11	284	1.6	8.38	1107.3					
01/24/2011	23:54:54					End Job				
01/24/2011	23:54:54	5	0.0	8.37	1108.1					

Well SGU 8515B-24 F25 496	Field Story Gulch	Job Start Jan/24/2011	Customer Encana	Job Number BJ90-00145
-------------------------------------	-----------------------------	---------------------------------	---------------------------	---------------------------------

Post Job Summary

Average Pump Rates, bbl/min					Volume of Fluid Injected, bbl			
Slurry 5.3	N2	Mud 0.0	Maximum Rate 473.2	Total Slurry 563.0	Mud 0.0	Spacer 150.0	N2	
Treating Pressure Summary, psi					Breakdown Fluid			
Maximum 3941	Final -3	Average 250	Bump Plug to 1000	Breakdown	Type	Volume	Density	
Avg. N2 Percent	Designed Slurry Volume 492.0 bbl		Displacement 232.0 bbl	Mix Water Temp 52 degF	Cement Circulated to Surface? <input checked="" type="checkbox"/>	Volume 170.0 bbl		
Customer or Authorized Representative James Gardner			Schlumberger Supervisor Matt Fair		Washed Thru Perfs <input type="checkbox"/>	To		
					Circulation Lost <input type="checkbox"/>	Job Completed <input checked="" type="checkbox"/>		
					-	-		



Service Order #:	
Date:	Jan/24/2011
Operating Time:	0.0
Client Rep:	Encana
Schlumberger Engineer:	Matt Fair
Schlumberger FSM:	

To be completed by Company Rep. Please answer Y (Yes) or N (No) and add any comments below.

2	Design / Preparation					
2a	Program incl. job simulation (CemCADE) & pump schedule / tool hydraulic calcs	3	yes	<input checked="" type="checkbox"/>	no	<input type="checkbox"/>
2b	Equipment maintenance schedule completed / Green tagged	2	yes	<input checked="" type="checkbox"/>	no	<input type="checkbox"/>
2c	All materials and equipment required for job/contingency checked & on location	2	yes	<input checked="" type="checkbox"/>	no	<input type="checkbox"/>
2d	Safety / pre-job meeting conducted with all involved present	2	yes	<input checked="" type="checkbox"/>	no	<input type="checkbox"/>
Sub-total						100%

4	Evaluation				
4a	Main job objective achieved with no consequential non-productive time	10	yes <input checked="" type="checkbox"/>	no <input type="checkbox"/>	10
Sub-total					100%

Comments: (Please include a brief explanation for a "NO" response and summarize any innovations attempted on this well.)

Client:	Schlumberger:
Client Signature:	Schlumberger Signature: