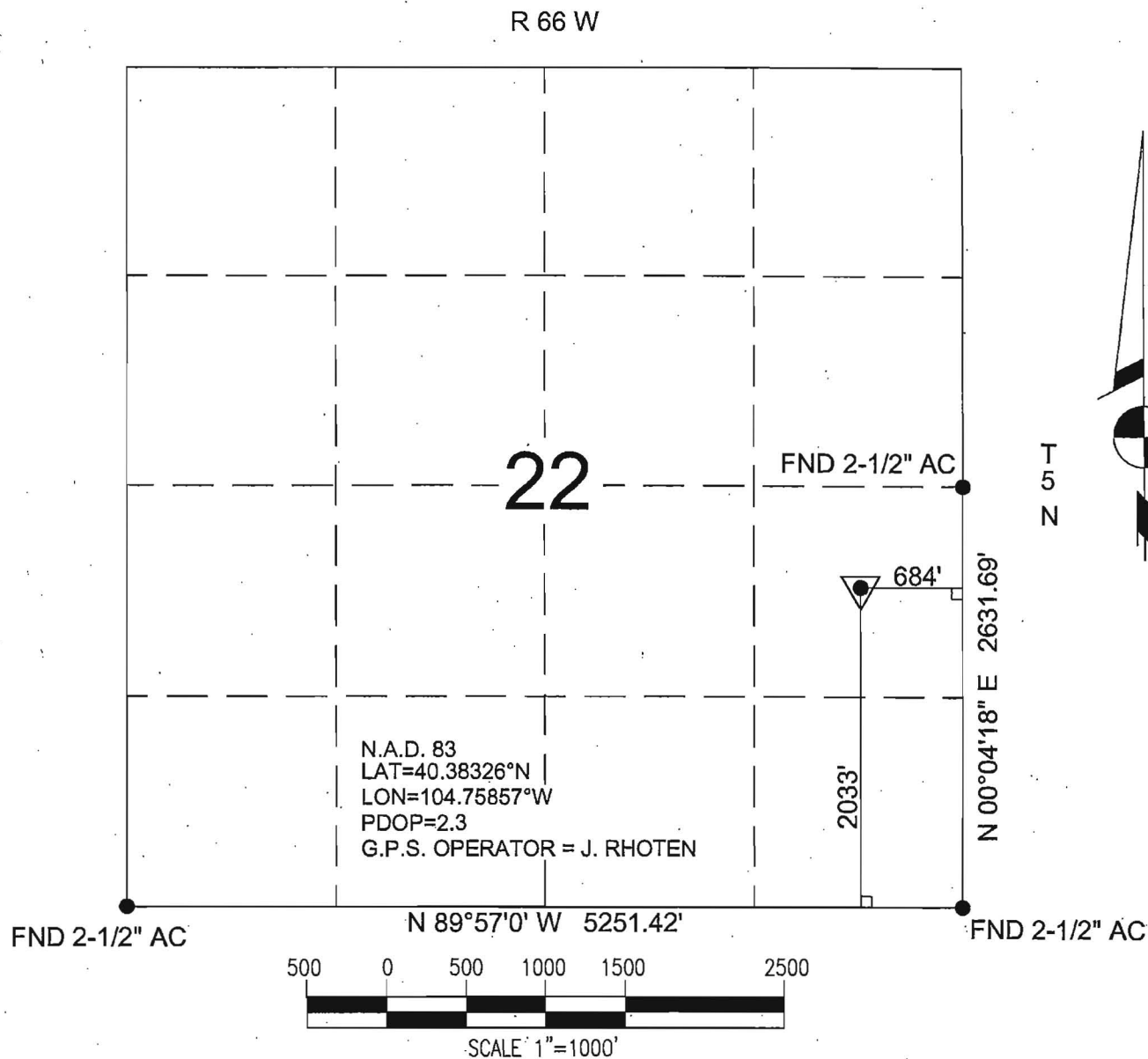


BASIS OF BEARINGS: THE EAST LINE OF THE SE 1/4 OF SECTION 22, AS SHOWN HEREON.



Power Surveying Co., Inc. of Frederick, Colorado has in accordance with a request from MIKE PRITCHARD for KP KAUFFMAN

determined the location of STRONG 1-7 (EXISTING) to be 1998' FSL & 649' FEL Section 22, Township 5 NORTH Range 66 WEST of the Sixth Principal Meridian, WELD County, Colorado

LOCATION NOTES

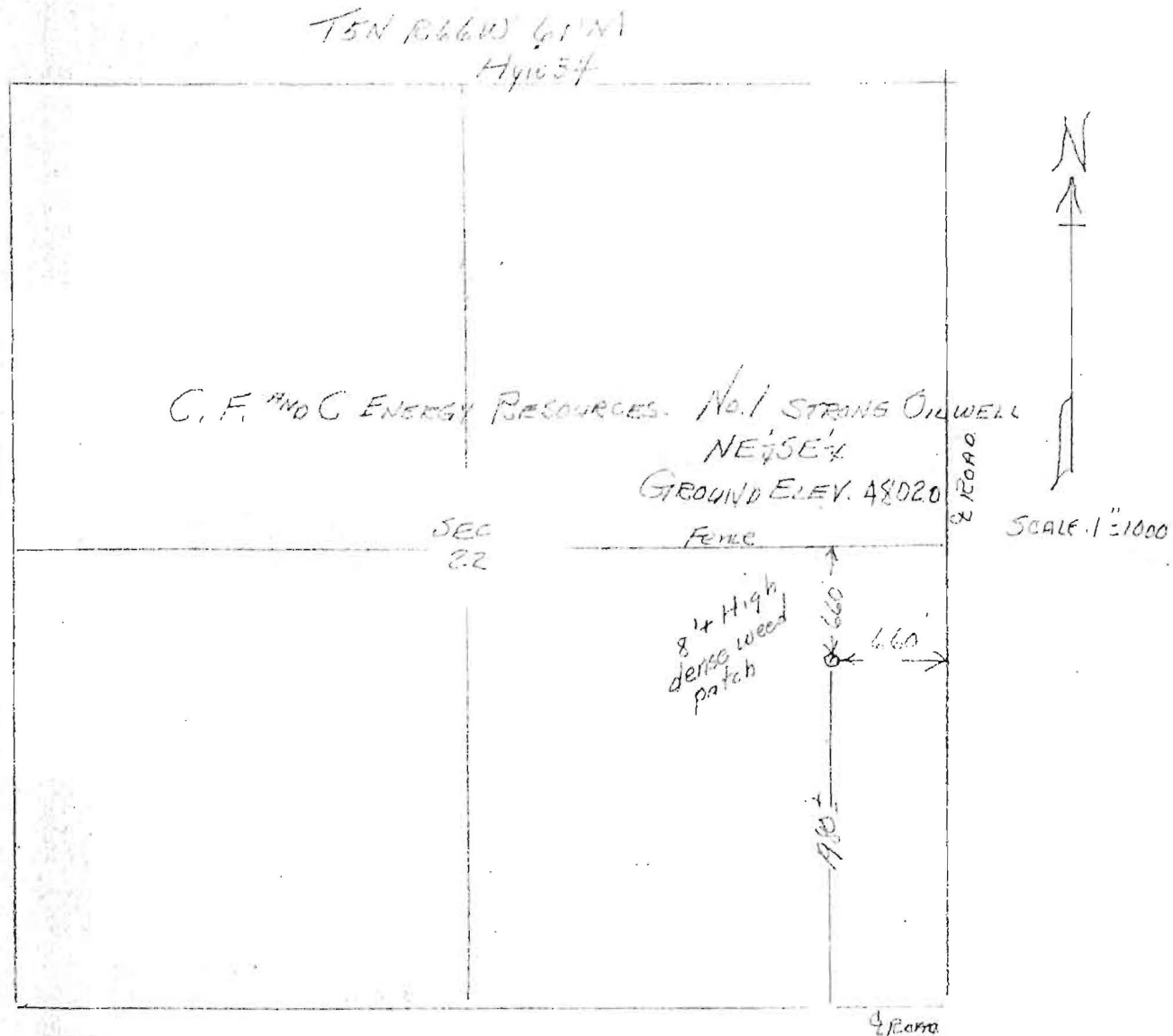
ELEVATION DETERMINED FROM NAVD 1988 DATUM.  
GROUND ELEVATION = 4805'

DISTANCES AND BEARINGS ARE FIELD MEASURED  
UNLESS OTHERWISE NOTED.



7800 MILLER DRIVE UNIT C  
FREDERICK, COLORADO 80504  
303.702.1617

CERTIFICATE OF SURVEY  
for  
C.F.&C Energy Resources  
Weld County, Colorado



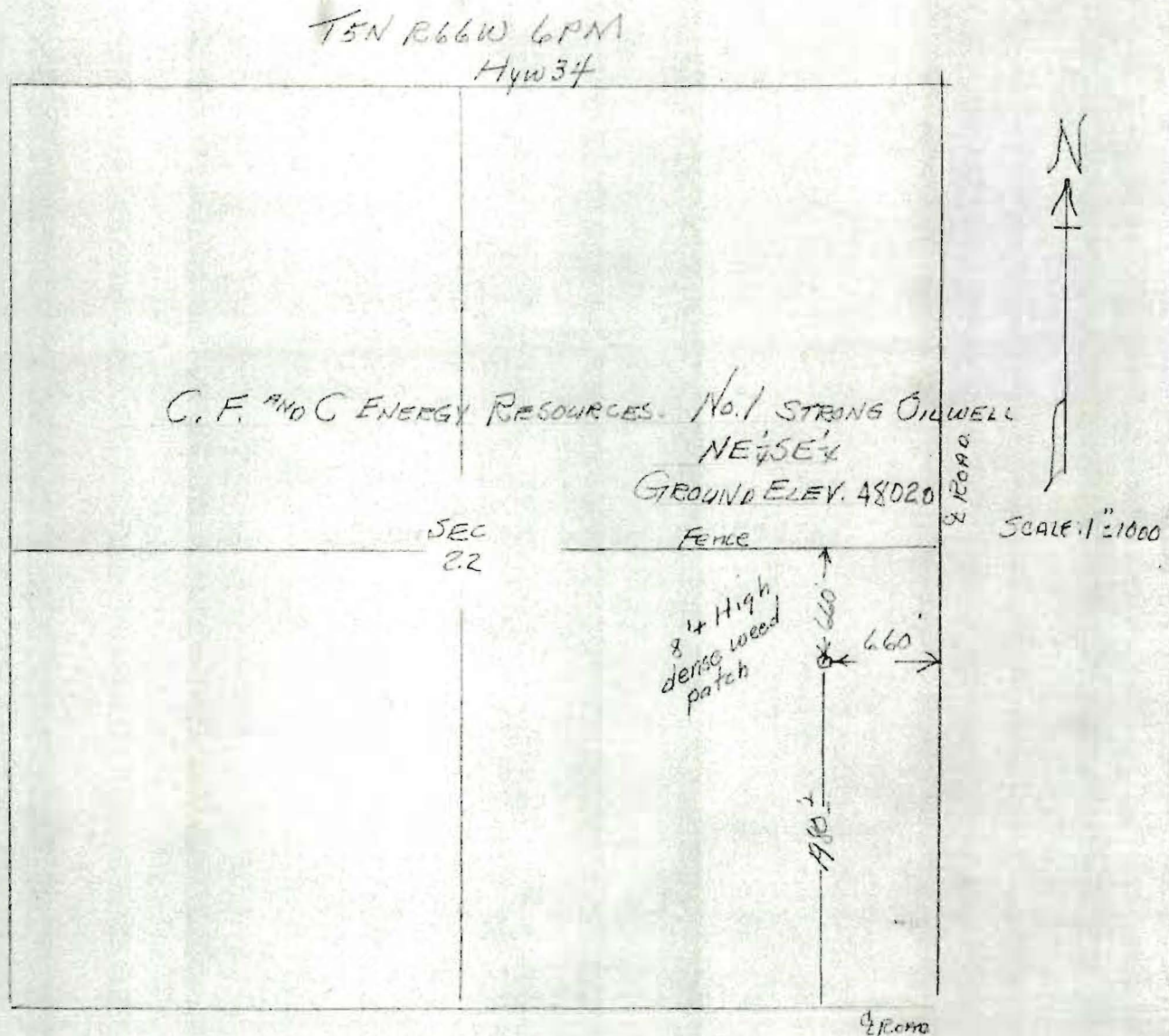
I hereby certify that the above plat is an accurate representation of a correct survey showing the location of C.F.&C. Energy Resources-No. 1 Strong Oilwell in NE 1/4 SE 1/4 Sec. 22 T5N R66W 61N. The elevation of the ground at the stake is 4802.0 feet above sea level from U.S.G.S. Bench Mark.

Fort Morgan, Colorado  
Sept. 23, 1983

*David J. Robinson*  
Registered Professional Engineer  
State of Colorado

STRONG 1

CERTIFICATE OF SURVEY  
for  
C.F.&C Energy Resources  
Weld County, Colorado



I hereby certify that the above plat is an accurate representation of a correct survey showing the location of C.F.&C. Energy Resources-No. 1 Strong Oilwell in NE 1/4 SEC 22 T5N R66W 6PM. The elevation of the ground at the stake is 4802.0 feet above sea level from U.S.G.S. Bench Mark.

Fort Morgan, Colorado  
Sept. 23, 1983

*Lucille J. Osborne*  
Registered Professional Engineer  
State of Colorado