

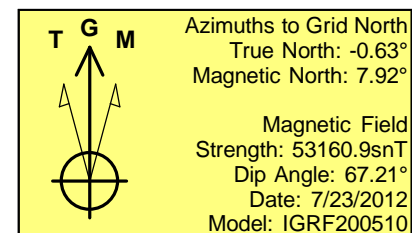
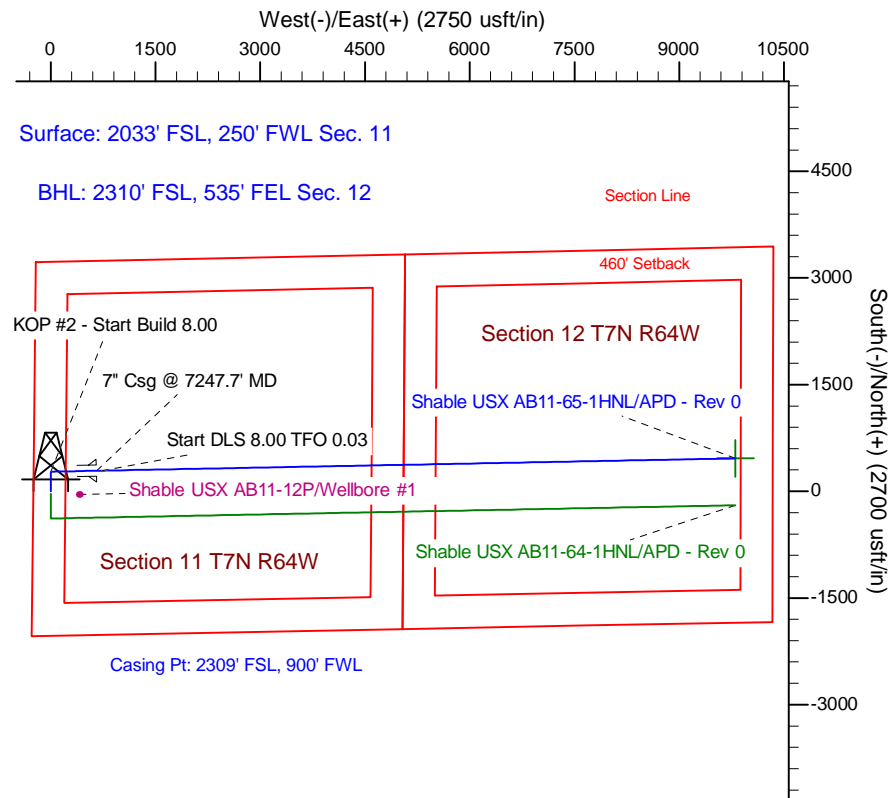
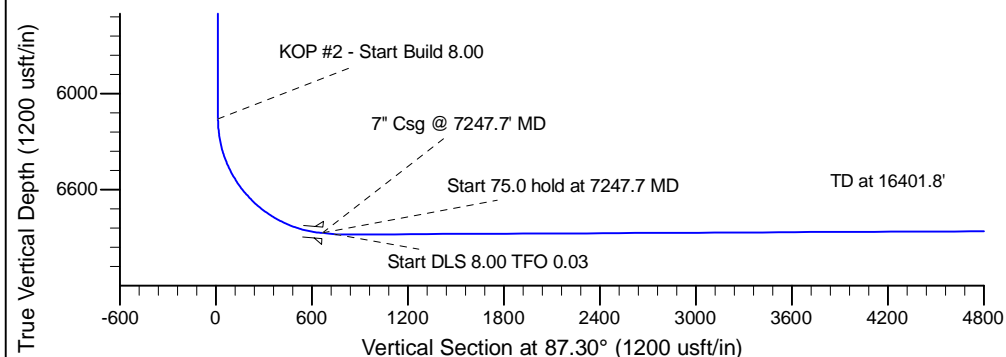
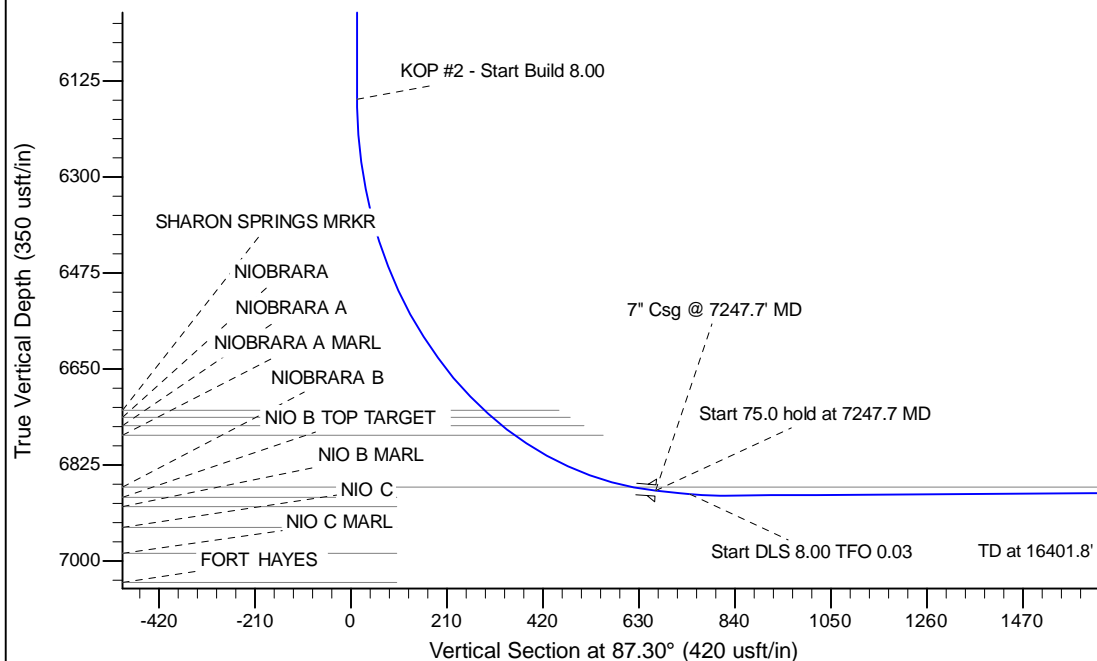
Project: Wattenberg Field  
Site: AB (Sec.11-T07N-R64W) Weld County, CO  
Well: Shable USX AB11-65-1HNL  
Wellbore: Original Drilling  
Design: APD - Rev 0

# Northern Region Drilling

Geodetic System: US State Plane 1983  
Datum: North American Datum 1983  
Ellipsoid: GRS 1980  
Zone: Colorado Northern Zone  
System Datum: Mean Sea Level

## SECTION DETAILS

Sec	MD	Inc	Azi	TVD	+N/-S	+E/-W	Dleg	TFace	Vsect	Target
1	0.0	0.00	0.00	0.0	0.0	0.0	0.00	0.00	0.0	
2	1800.0	0.00	0.00	1800.0	0.0	0.0	0.00	0.00	0.0	
3	2321.5	13.04	0.00	2317.0	59.1	0.0	2.50	0.00	2.8	
4	3025.6	13.04	0.00	3003.0	217.9	0.0	0.00	0.00	10.3	
5	3547.1	0.00	0.00	3520.0	277.0	0.0	2.50	180.00	13.1	
6	6185.2	0.00	0.00	6158.1	277.0	0.0	0.00	0.00	13.1	
7	7247.7	85.00	88.91	6871.5	289.4	653.7	8.00	88.91	666.6	
8	7322.7	85.00	88.91	6878.1	290.9	728.4	0.00	0.00	741.3	
9	7389.0	90.30	88.91	6880.8	292.1	794.5	8.00	0.03	807.4	
10	16401.8	90.30	88.91	6833.6	463.2	9805.6	0.00	0.00	9816.5	Shable USX AB11-65-1HNL BHL 2310'FSL, 535'FEL



WELL DETAILS: Shable USX AB11-65-1HNL			
Ground Level:	4823.0	Latitude	40.586020
North	1457816.87	East	3270772.02
Longitude	-104.525090		
Plan: APD - Rev 0 (Shable USX AB11-65-1HNL/Original Drilling)			
Created By:	Carrie Willers	Date:	9:54, July 24 2012
Checked:		Date:	
Reviewed:		Date:	
Approved:		Date:	