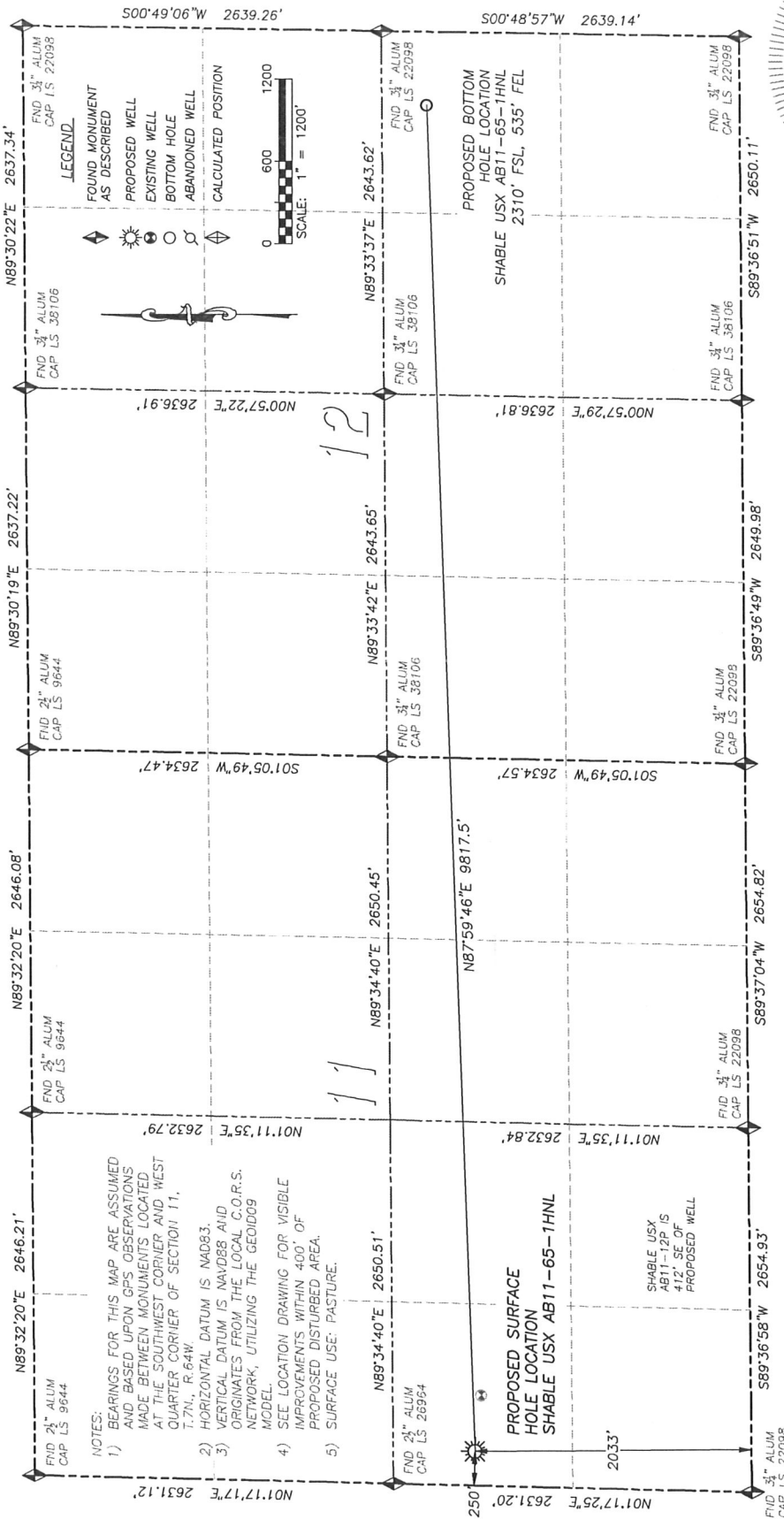


DALEY LAND SURVEYING, INC. PARKER, CO. 80134 303 953 9841

WELL LOCATION CERTIFICATE - SHABLE USX AB11-65-1HNL

SECTION 11, TOWNSHIP 7 NORTH, RANGE 64 WEST OF THE 6TH PRINCIPAL MERIDIAN



NAD 83 LATITUDE AND LONGITUDE

SHABLE USX AB11-65-1HNL
SURFACE HOLE:
LATITUDE: N40.58602°
LONGITUDE: W104.52509°
ELEVATION: 4823'
FOOTAGE: 2033' FSL, 250' FWL
PDOP: 1.7
QTR/QTR: NW4/SW4
PROP LINE: 250'± WEST

BOTTOM HOLE:
LATITUDE: N40.58699°
LONGITUDE: W104.48977°
FOOTAGE: 2310' FSL, 535' FEL
OF SECTION 12

NEAREST EXISTING WELL:
LATITUDE: N40.58589°
LONGITUDE: W104.52362°
412' SE

IN ACCORDANCE WITH A REQUEST FROM RYAN HAWKINS OF NOBLE ENERGY INC., DALEY LAND SURVEYING, INC. HAS DETERMINED THE SURFACE LOCATION OF THE SHABLE USX AB11-65-1HNL WELL TO BE 2033' FSL, 250' FWL, AS MEASURED AT NINETY (90) DEGREES FROM THE SECTION LINES OF SECTION 11, TOWNSHIP 7 NORTH, RANGE 64 WEST OF THE 6TH PRINCIPAL MERIDIAN, WELD COUNTY, COLORADO. THE BOTTOM HOLE LOCATION, PROVIDED BY THE CLIENT, IS TO BE 2310' FSL, 535' FEL OF SECTION 12, T.7N., R.64W.

I HEREBY CERTIFY THAT THIS WELL LOCATION CERTIFICATE WAS PREPARED BY ME OR UNDER MY DIRECT SUPERVISION, THAT THE WORK WAS COMPLETED ON 5/4/2012 FOR AND ON BEHALF OF NOBLE ENERGY, INC., AND THAT THIS MAP DOES NOT REPRESENT A BOUNDARY SURVEY, IT IS NOT A LAND SURVEY PLAT OR AN IMPROVEMENT SURVEY PLAT AND IT IS NOT TO BE RELIED UPON FOR THE ESTABLISHMENT OF FENCE, BUILDING OR OTHER FUTURE IMPROVEMENT LINES.

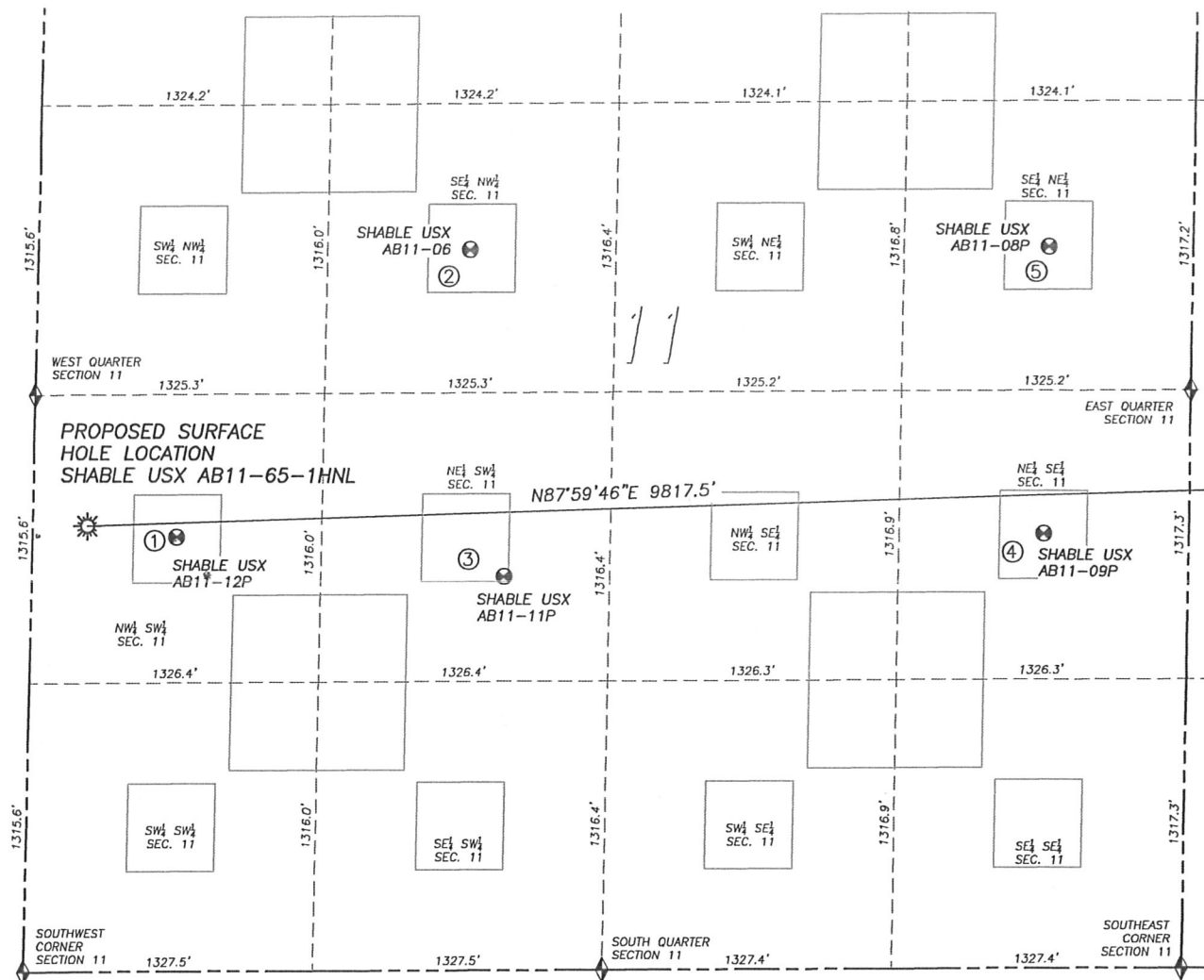


FOR AND ON BEHALF OF
DALEY LAND SURVEYING, INC.,
Robert Daley, PLS 35597

NOTICE: According to Colorado law you MUST commence any legal action based upon any defect in this W.L.C. within three years after you first discover such defect. In no event may any action based upon any such defect in this W.L.C. be commenced more than ten years from the date of the certification shown herein.

SITE SKETCH SHABLE USX AB11-65-1HNL

SECTION 11, TOWNSHIP 7 NORTH, RANGE 64 WEST OF THE 6TH PRINCIPAL MERIDIAN



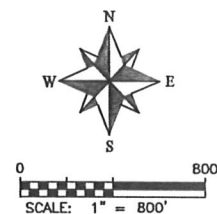
	Well Name	Qtr - Qtr	Footage		Latitude	Longitude	Elevation	PDOP
1	SHABLE USX AB11-12P	NW SW 11	1981' FSL	660' FWL	40.58589	-104.52362	4823	1.4
2	SHABLE USX AB11-06	SE NW 11	1981' FNL	1977' FWL	40.58949	-104.51877	4851	1.5
3	SHABLE USX AB11-11P	NE SW 11	1795' FSL	2165' FWL	40.58541	-104.51821	4839	1.4
4	SHABLE USX AB11-09P	NE SE 11	1980' FSL	661' FEL	40.58597	-104.50929	4834	1.6
5	SHABLE USX AB11-08P	SE NE 11	1980' FNL	660' FEL	40.58956	-104.50920	4844	1.6

NOTES:

1. THIS DOES NOT REPRESENT A BOUNDARY SURVEY
2. HORIZONTAL DATUM IS NAD83
3. VERTICAL DATUM IS NAVD88 AND ORIGINATES FROM THE LOCAL C.O.R.S. NETWORK, UTILIZING THE GEOID09 MODEL.

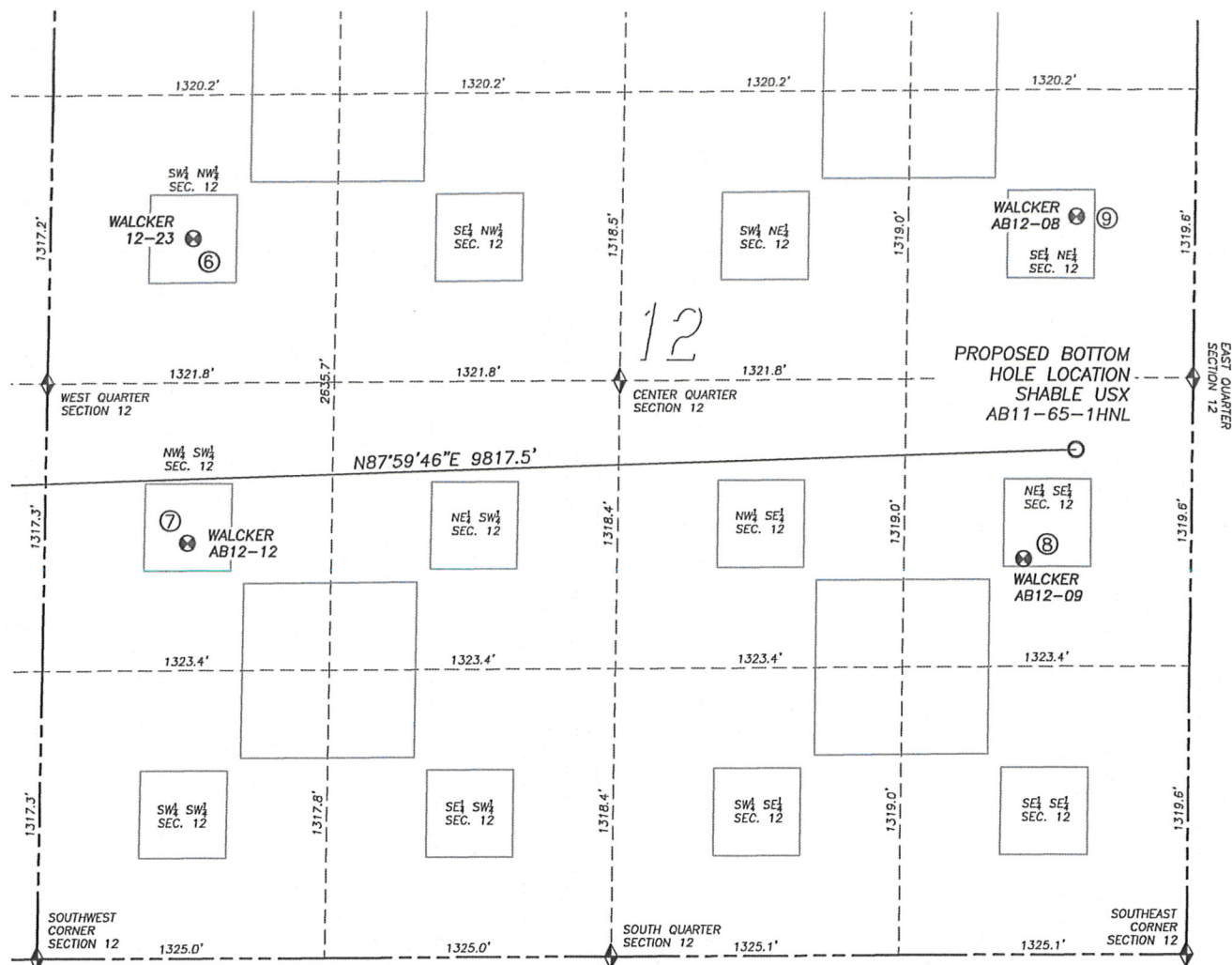
LEGEND

- ◆ FOUND MONUMENT AS DESCRIBED
- ☀ PROPOSED WELL
- EXISTING WELL
- BOTTOM HOLE
- ⊕ ABANDONED WELL
- ◆ CALCULATED POSITION



SITE SKETCH SHABLE USX AB11-65-1HNL

SECTION 11, TOWNSHIP 7 NORTH, RANGE 64 WEST OF THE 6TH PRINCIPAL MERIDIAN



	Well Name	Qtr - Qtr	Footage		Latitude	Longitude	Elevation	PDOP
6	WALCKER 12-23	SW NW 12	1974' FNL	660' FWL	40.58961	-104.50444	4834	1.7
7	WALCKER AB12-12	NW SW 12	1900' FSL	659' FWL	40.58578	-104.50454	4829	1.5
8	WALCKER AB12-09	NE SE 12	1811' FSL	770' FEL	40.58562	-104.49065	4796	1.6
9	WALCKER AB12-08	SE NE 12	1900' FNL	545' FEL	40.58992	-104.48976	4831	1.7

NOTES:

1. THIS DOES NOT REPRESENT A BOUNDARY SURVEY
2. HORIZONTAL DATUM IS NAD83
3. VERTICAL DATUM IS NAVD88 AND ORIGINATES FROM THE LOCAL C.O.R.S. NETWORK, UTILIZING THE GEOID09 MODEL.

LEGEND

- ◆ FOUND MONUMENT AS DESCRIBED
- ☀ PROPOSED WELL
- ⊙ EXISTING WELL
- BOTTOM HOLE
- ⊘ ABANDONED WELL
- ◆ CALCULATED POSITION

