

HALLIBURTON

WPX ENERGY ROCKY MOUNTAIN LLC-EBUS

**FED RGU 11-23-298
SULPHUR CREEK
Rio Blanco County , Colorado**

Cement Multiple Stages

20-May-2012

Post Job Report

The Road to Excellence Starts with Safety

Sold To #: 300721	Ship To #: 2926580	Quote #:	Sales Order #: 9506904
Customer: WPX ENERGY ROCKY MOUNTAIN LLC-EBUS	Customer Rep: Brunk, Andrew		
Well Name: FED RGU	Well #: 11-23-298	API/UWI #: 05-103-11902	
Field: SULPHUR CREEK	City (SAP): MEEKER	County/Parish: Rio Blanco	State: Colorado
Lat: N 39.87 deg. OR N 39 deg. 52 min. 13.238 secs.	Long: W 108.363 deg. OR W -109 deg. 38 min. 12.52 secs.		
Contractor: CYCLONE 29	Rig/Platform Name/Num: CYCLONE 29		
Job Purpose: Cement Multiple Stages			
Well Type: Development Well	Job Type: Cement Multiple Stages		
Sales Person: SCOTT, KYLE	Srv Supervisor: MUHLESTEIN, RYAN	MBU ID Emp #: 453609	

Job Personnel

HES Emp Name	Exp Hrs	Emp #	HES Emp Name	Exp Hrs	Emp #	HES Emp Name	Exp Hrs	Emp #
ANDERSON, ADAM S	10	456683	LINN, PAUL Andrew	10	479143	MUHLESTEIN, RYAN Herrick	10	453609
PARKER, BRANDON	10	503646	WOLFE, JON P	10	485217			

Equipment

HES Unit #	Distance-1 way	HES Unit #	Distance-1 way	HES Unit #	Distance-1 way	HES Unit #	Distance-1 way
10011429	30 mile	10025118	30 mile	10616651C	30 mile	10867425	30 mile
10897891	30 mile	10951250	30 mile	10969711	30 mile	11808827	30 mile
4902	30 mile	4905	30 mile				

Job Hours

Date	On Location Hours	Operating Hours	Date	On Location Hours	Operating Hours	Date	On Location Hours	Operating Hours
5/20/12	10	10						
TOTAL			Total is the sum of each column separately					

Job

Formation Name	Formation Depth (MD)	Top	Bottom	Form Type	Job depth MD	Water Depth	Perforation Depth (MD)	From	To
				BHST	34520. ft				
					Job Depth TVD	3452. ft			
					Wk Ht Above Floor	4. ft			

Job Times

Date	Time	Time Zone
19 - May - 2012	23:30	MST
20 - May - 2012	05:30	MST
20 - May - 2012	09:22	MST
20 - May - 2012	13:22	GMT
20 - May - 2012	15:30	MST

Well Data

Description	New / Used	Max pressure psig	Size in	ID in	Weight lbm/ft	Thread	Grade	Top MD ft	Bottom MD ft	Top TVD ft	Bottom TVD ft
-------------	------------	-------------------	---------	-------	---------------	--------	-------	-----------	--------------	------------	---------------

Sales/Rental/3rd Party (HES)

Description	Qty	Qty uom	Depth	Supplier
PLUG,CMTG,TOP,9 5/8,HWE,8.16 MIN/9.06 MA	0	EA		

Tools and Accessories

Type	Size	Qty	Make	Depth	Type	Size	Qty	Make	Depth	Type	Size	Qty	Make
Guide Shoe					Packer					Top Plug			
Float Shoe					Bridge Plug					Bottom Plug			
Float Collar					Retainer					SSR plug set			
Insert Float										Plug Container			
Stage Tool										Centralizers			

Miscellaneous Materials

Gelling Agt	Conc	Surfactant	Conc	Acid Type	Qty	Conc	%
Treatment Fld	Conc	Inhibitor	Conc	Sand Type	Size	Qty	

Fluid Data

Stage/Plug #: 1									
Fluid #	Stage Type	Fluid Name	Qty	Qty uom	Mixing Density lbm/gal	Yield ft3/sk	Mix Fluid Gal/sk	Rate bbl/min	Total Mix Fluid Gal/sk

HALLIBURTON**Cementing Job Summary**

1	Fresh Water Spacer			bbl	8.33	.0	.0	3	
2	1st Stage Lead Cement	VERSACEM (TM) SYSTEM (452010)		sacks	12.8	1.77	9.34	6	9.34
	0.25 lbm	POLY-E-FLAKE (101216940)							
	0.25 %	HR-5, 50 LB SK (100005050)							
	9.34 Gal	FRESH WATER							
3	1st Stage Tail Cement	VARICEM (TM) CEMENT (452009)		sacks	12.8	1.96	10.95	7	10.95
	10.95 Gal	FRESH WATER							
4	Displacement			bbl	8.33	.0	.0	9	
5	Fresh Water Spacer			bbl	8.33	.0	.0	3	
6	2nd Stage Tail Cement	VERSACEM (TM) SYSTEM (452010)		sacks	12.8	1.96	10.95	7	10.95
	10.95 Gal	FRESH WATER							
7	Displacement			bbl	8.33	.0	.0	9	
Calculated Values		Pressures		Volumes					
Displacement	265	Shut In: Instant		Lost Returns	0	Cement Slurry	556.9	Pad	
Top Of Cement	SURFACE	5 Min		Cement Returns	100	Actual Displacement	265	Treatment	
Frac Gradient		15 Min		Spacers	40	Load and Breakdown		Total Job	931
Rates									
Circulating	10	Mixing	7	Displacement	9	Avg. Job	8		
Cement Left In Pipe	Amount	24.8 ft	Reason	Shoe Joint					
Frac Ring # 1 @	ID	Frac ring # 2 @	ID	Frac Ring # 3 @	ID	Frac Ring # 4 @	ID		
The Information Stated Herein Is Correct				Customer Representative Signature					

The Road to Excellence Starts with Safety

Sold To #: 300721		Ship To #: 2926580		Quote #:		Sales Order #: 9506904	
Customer: WPX ENERGY ROCKY MOUNTAIN LLC-EBUS				Customer Rep: Brunk, Andrew			
Well Name: FED RGU			Well #: 11-23-298			API/UWI #: 05-103-11902	
Field: SULPHUR CREEK		City (SAP): MEEKER		County/Parish: Rio Blanco		State: Colorado	
Legal Description:							
Lat: N 39.87 deg. OR N 39 deg. 52 min. 13.238 secs.				Long: W 108.363 deg. OR W -109 deg. 38 min. 12.52 secs.			
Contractor: CYCLONE 29			Rig/Platform Name/Num: CYCLONE 29				
Job Purpose: Cement Multiple Stages						Ticket Amount:	
Well Type: Development Well			Job Type: Cement Multiple Stages				
Sales Person: SCOTT, KYLE			Srvc Supervisor: MUHLESTEIN, RYAN			MBU ID Emp #: 453609	

Activity Description	Date/Time	Cht #	Rate bbl/ min	Volume bbl		Pressure psig		Comments
				Stage	Total	Tubing	Casing	
Call Out	05/19/2012 23:30							
Pre-Convoy Safety Meeting	05/20/2012 01:50							ALL HES EMPLOYEES
Arrive At Loc	05/20/2012 05:30							RIG STILL RUNNING CASING
Assessment Of Location Safety Meeting	05/20/2012 06:00							ALL HES EMPLOYEES
Rig-Up Equipment	05/20/2012 06:30							1 ELITE HT 400 PUMP, 2 660 BULK TRUCKS, 2 1700 CU. FT. SILOS, 1 BODY LOAD BULK, 1 F- 450 PICK-UP, 1 PLUG CONTAINER, 2" IRON TO STAND PIPE
Circulate Well	05/20/2012 08:30							CASING ON BOTTOM, RIG CIRCULATES USING HES SWAGE AND IRON, CIRC. 1 HR, 10 BPM, 250 PSI. MUD REPORT 9 PPG PV 70, YP 2.
Pre-Job Safety Meeting	05/20/2012 09:00							ALL HES EMPLOYEES, RIG CREW, CO REP.
Start Job	05/20/2012 09:22							TD 3460', TP 3452.5', FC 3427.5', HOLE 14.75 TO 1300', 13.5" TO TD, 9.625" CSG 36# J55, SJ 24.8'. DV TOOL SET AT 1362'
Pump Water	05/20/2012 09:24		2	2			131.0	FILL LINES
Pressure Test	05/20/2012 09:25						4200. 0	NO LEAKS
Pump Spacer 1	05/20/2012 09:28		3	20			140.0	FRESH WATER

Cementing Job Log

Activity Description	Date/Time	Cht #	Rate bbl/min	Volume bbl		Pressure psig		Comments
				Stage	Total	Tubing	Casing	
Pump 1st Stage Lead Slurry	05/20/2012 09:38		6	212.8			397.0	675 SKS 12.8 PPG 1.77 FT3/SK 9.34 GAL/SK WEIGHED VERIFIED VIA MUD SCALES WET AND DRY SAMPLES SUBMITTED. 105 LBS TUFF FIBER USED IN FIRST 200 BBLs
Other	05/20/2012 09:49							DURING LEAD CMT CELLAR PUMPS COULD NOT KEEP UP WITH PUMP RATE. HAD TO SLOW AT 90 BBLs AWAY ON LEAD TO 2 BBLs A MINUTE. DOWNHOLE DENSO WAS BEING SUCKED DRY DUE TO WELL BEING ON A VACUUM. CELLAR PUMPS PROBLEM RESOLVED AND HES RESUMED RATE AND DENSITY
Pump 1st Stage Tail Slurry	05/20/2012 10:21		7	69.8			280.0	200 SKS 12.8 PPG 1.96 FT3/SK 10.95 GAL/SK WEIGHED VERIFIED VIA MUD SCALES WET AND DRY SAMPLES SUBMITTED
Shutdown	05/20/2012 10:34							WASH UP ON TOP OF PLUG
Drop Plug	05/20/2012 10:37							REMOVE PLUG CONTAINER CAP TO LAUNCH PLUG
Pump Displacement	05/20/2012 10:39		9	265			690.0	FRESH H2O
Slow Rate	05/20/2012 11:19		4	255			515.0	10 BBLs PRIOR TO PLUG PASSING THRU TOOL, 10 BBLs PRIOR TO CALCULATED DISPLACEMENT
Bump Plug	05/20/2012 11:21		4	265			995.0	PLUG LANDED HOLD FOR 1 MINUTE
Check Floats	05/20/2012 11:22							FLOATS HOLDING, 1/2 BBL RETURNED BACK TO PUMP
Drop Opening Device For Multiple Stage Cementer	05/20/2012 11:26							DROP BOMB WAIT 8 MINUTES

Sold To # : 300721

Ship To # : 2926580

Quote # :

Sales Order # :

9506904

SUMMIT Version: 7.3.0021

Monday, May 28, 2012 02:25:00

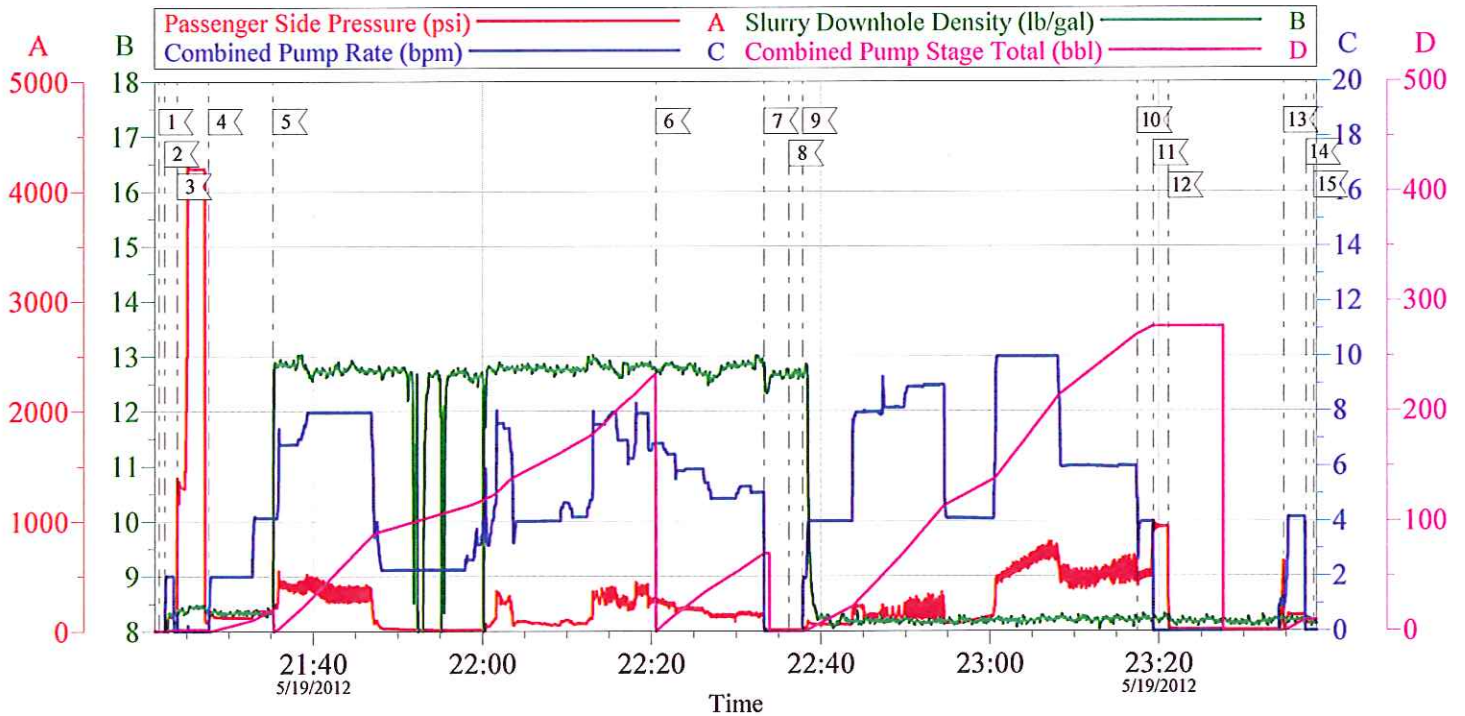
Activity Description	Date/Time	Cht #	Rate bbl/min	Volume bbl		Pressure psig		Comments
				Stage	Total	Tubing	Casing	
Open Multiple Stage Cementer	05/20/2012 11:34							DV TOOL PRESSURED UP TO 640 PSI THEN FELL TO 145 PSI. RETURNS NOTED TO PIT.
Pump Water	05/20/2012 11:36		4	10			145.0	FRESH H2O
Shutdown	05/20/2012 11:38							
Circulate Well	05/20/2012 11:39		10	185			45.0	RIG TO CIRCULATE WELL, 185 BBLS MUD PUMPED BY RIG. 40 BBLS CMT TO SURFACE
Other	05/20/2012 12:15							1ST STAGE COMPLETE, PER CO REP NO WAIT BETWEEN STAGES
Other	05/20/2012 12:17							START 2ND STAGE
Pump Spacer 1	05/20/2012 12:18		3	20			80.0	FRESH WATER
Pump 2nd Stage Tail Slurry	05/20/2012 12:26		6.5	274.3			340.0	680 SKS 12.8 PPG 1.96 FT3/SK 10.95 GAL/SK WEIGHED VERIFIED VIA MUD SCALES WET AND DRY SAMPLES SUBMITTED, 45 LBS TUVV FIBER IN THE LAST 100 BBLS
Shutdown	05/20/2012 12:58							WASH UP ONTOP OF PLUG
Drop Plug	05/20/2012 13:01							PLUG LAUNCH
Pump Displacement	05/20/2012 13:02		9	105.3			660.0	PUMPED H2O, GOOD RETURNS T/O DISPLACEMENT. PUMPS HIT KICKOUTS SET TO LOW
Cement Returns to Surface	05/20/2012 13:07							60 BBLS RETURNED TO SURFACE
Slow Rate	05/20/2012 13:13			95			699.0	10 BBLS PRIOR TO CALCULATED DISPLACEMENT
Close Multiple Stage Cementer	05/20/2012 13:17			105.3			1100.0	1100 PSI TO CLOSE MSC TOOL
Release Casing Pressure	05/20/2012 13:18							1/2 BBL RETURNED BACK TO PUMP

Cementing Job Log

Activity Description	Date/Time	Cht #	Rate bbl/ min	Volume bbl		Pressure psig		Comments
				Stage	Total	Tubing	Casing	
End Job	05/20/2012 13:20							HES SWAGE AND IRON BASKET USED. NO IRON TRAILER, ADD HRS, DERRICK CHARGE, HES TOP PLUG OR SUGAR. 1 ADDITIONAL DOT CHARGE
Post-Job Safety Meeting (Pre Rig-Down)	05/20/2012 13:30							ALL HES EMPLOYEES
Rig-Down Equipment	05/20/2012 13:45							
Pre-Convoy Safety Meeting	05/20/2012 15:25							ALL HES EMPLOYEES
Crew Leave Location	05/20/2012 15:30							SITE WAS AS CLEAN AS WHEN WE ARRIVED, THANK YOU FOR USING HES FROM RYAN MUHLESTEIN AND CREW.

WPX ENERGY ROCKY MTN - RG 11-23-298

9 5/8" SURFACE CASING STAGE 1



Local Event Log		
1 START JOB	2 PRIME LINES	3 PRESSURE TEST
4 PUMP H2O SPACER	5 PUMP LEAD CMT	6 PUMP TAIL CMT
7 SHUT DOWN	8 DROP PLUG	9 PUMP DISPLACEMENT
10 SLOW RATE	11 BUMP PLUG	12 CHECK FLOATS
13 OPEN DV TOOL	14 SHUT DOWN	15 TURN OVER TO RIG

Customer: WPX ROCKY MTN
Well Description: RG 11-23-298
Company Rep: ANDREW BRUNK

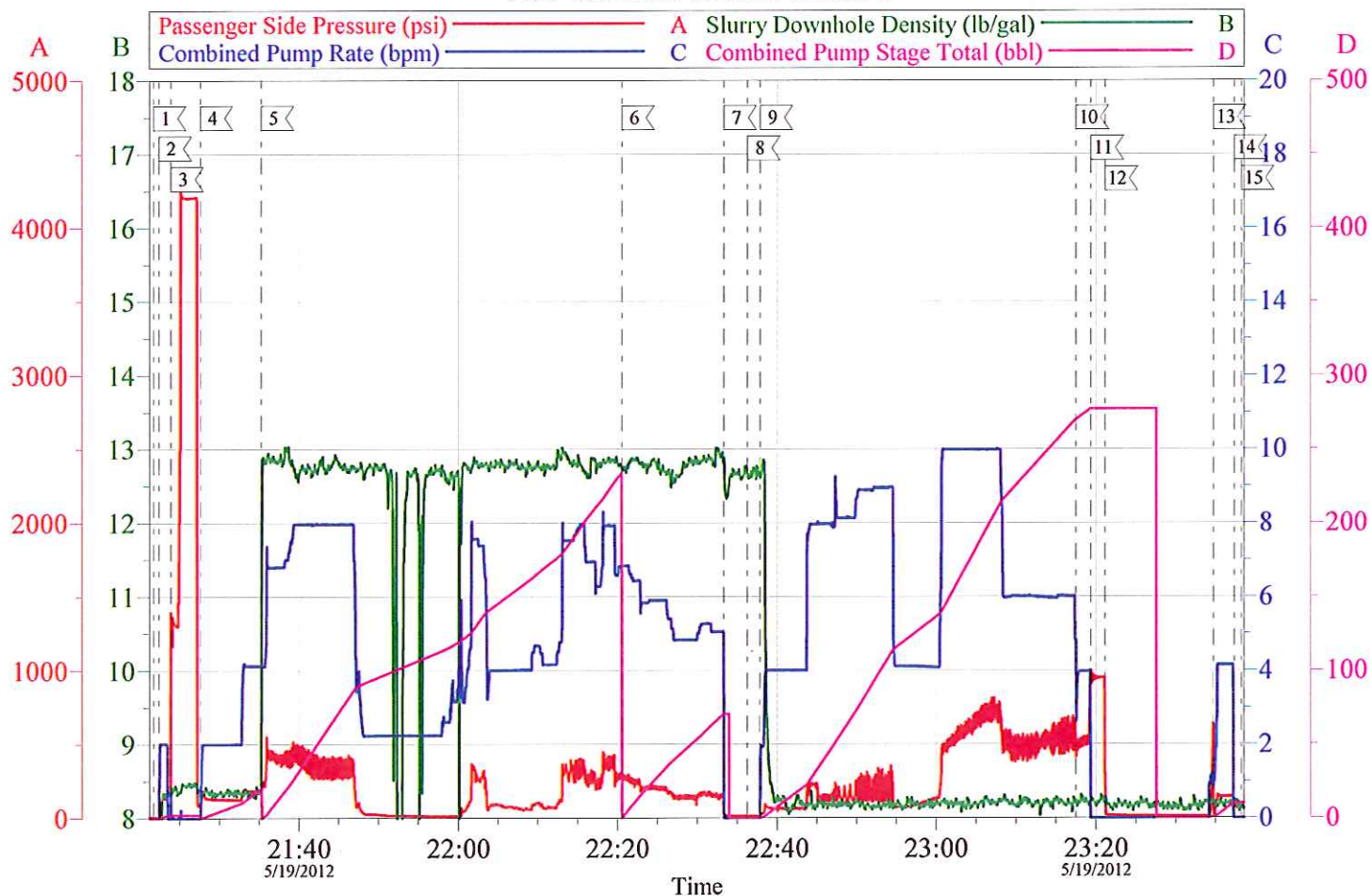
Job Date: 20-May-2012
Job Type: 2 STAGE SURFACE
Cement Supervisor: RYAN MUHLESTEIN

Sales Order #: 9506904
ADC Used: YES
Operator/ Pump: ADAM ANDERSON/ ELITE 4

OptiCem v6.4.10
20-May-12 14:03

WPX ENERGY ROCKY MTN - RG 11-23-298

9 5/8" SURFACE CASING STAGE 1

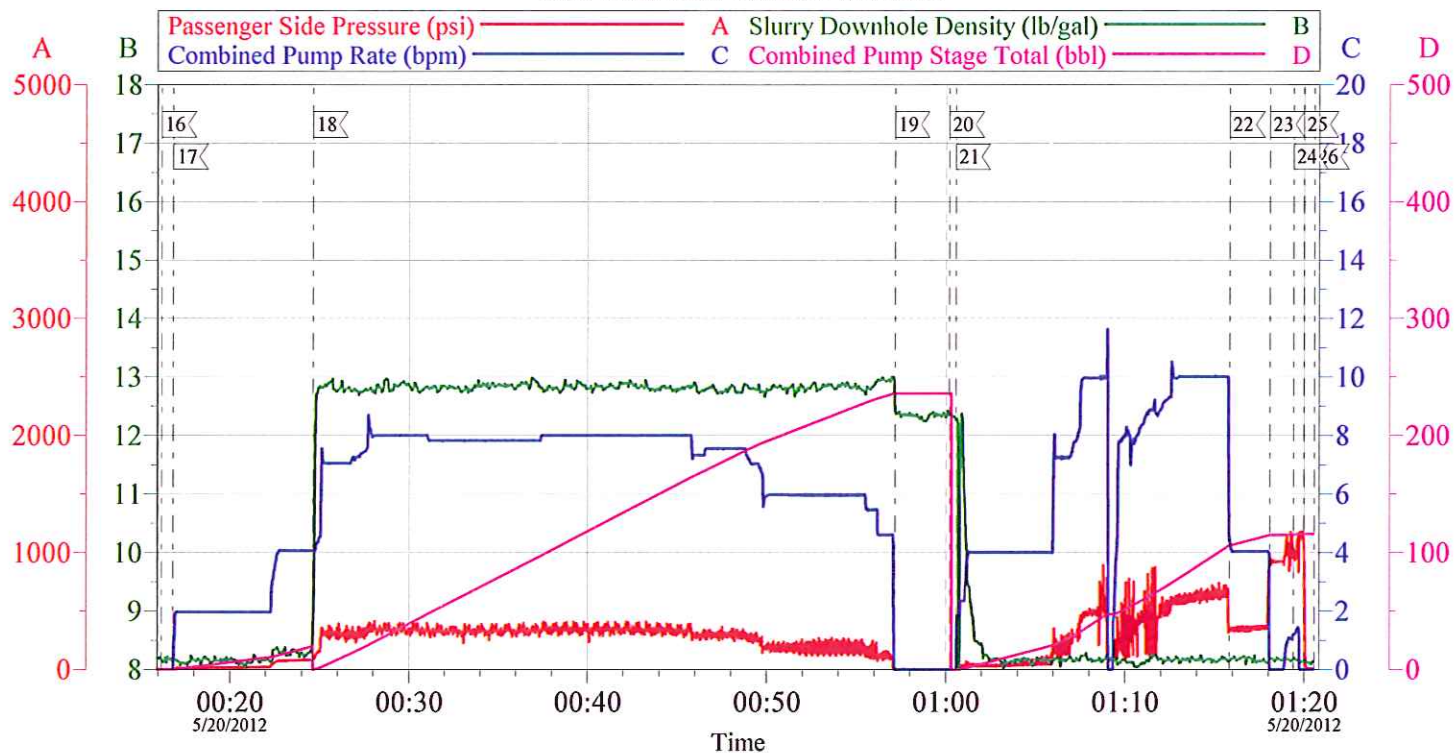


Customer:	WPX ROCKY MTN	Job Date:	20-May-2012	Sales Order #:	9506904
Well Description:	RG 11-23-298	Job Type:	2 STAGE SURFACE	ADC Used:	YES
Company Rep:	ANDREW BRUNK	Cement Supervisor:	RYAN MUHLESTEIN	Operator/ Pump	ADAM ANDERSON/ ELITE 4

OptiCem v6.4.10
20-May-12 14:04

WPX ENERGY ROCKY MTN - RG 11-23-298

9 5/8" SURFACE CASING STAGE 2



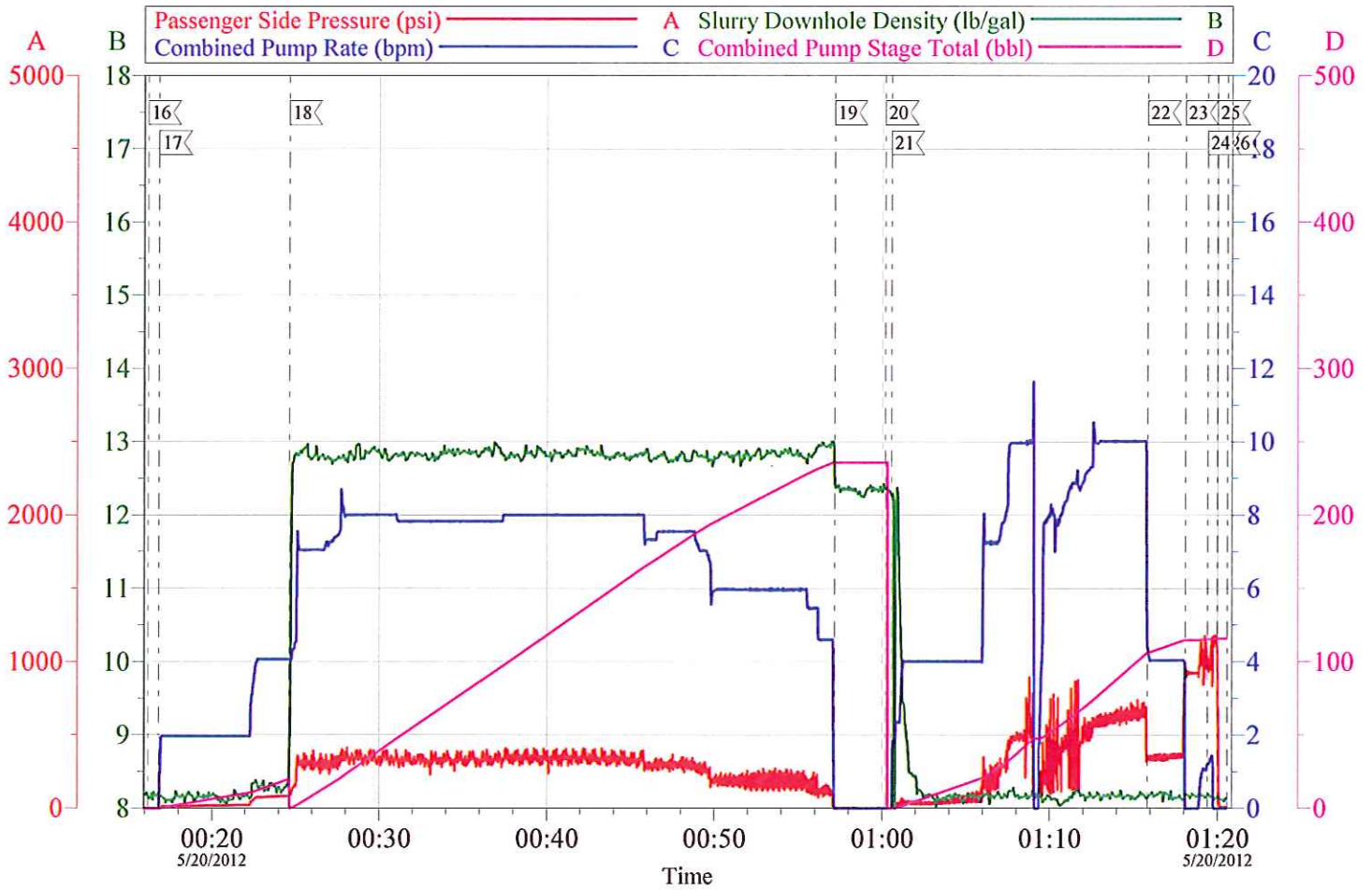
Local Event Log					
16	START 2ND STAGE	17	PUMP H2O SPACER	18	PUMP TAIL CMT
19	SHUT DOWN	20	DROP PLUG	21	PUMP DISPLACEMENT
22	SLOW RATE	23	BUMP PLUG	24	CLOSE DV TOOL
25	RELEASE CASING PSI	26	END JOB		

Customer:	WPX ROCKY MTN	Job Date:	20-May-2012	Sales Order #:	9506904
Well Description:	RG 11-23-298	Job Type:	2 STAGE SURFACE	ADC Used:	YES
Company Rep:	ANDREW BRUNK	Cement Supervisor:	RYAN MUHLESTEIN	Operator/ Pump	ADAM ANDERSON/ ELITE 4

OptiCem v6.4.10
20-May-12 14:09

WPX ENERGY ROCKY MTN - RG 11-23-298

9 5/8" SURFACE CASING STAGE 2



Customer:	WPX ROCKY MTN	Job Date:	20-May-2012	Sales Order #:	9506904
Well Description:	RG 11-23-298	Job Type:	2 STAGE SURFACE	ADC Used:	YES
Company Rep:	ANDREW BRUNK	Cement Supervisor:	RYAN MUHLESTEIN	Operator/ Pump	ADAM ANDERSON/ ELITE 4

OptiCem v6.4.10
20-May-12 14:10