

BILL BARRETT CORPORATION
GREASEWOOD #04-08H
LOCATED IN WELD COUNTY, COLORADO
SECTION 8, T6N, R61W, 6th P.M.

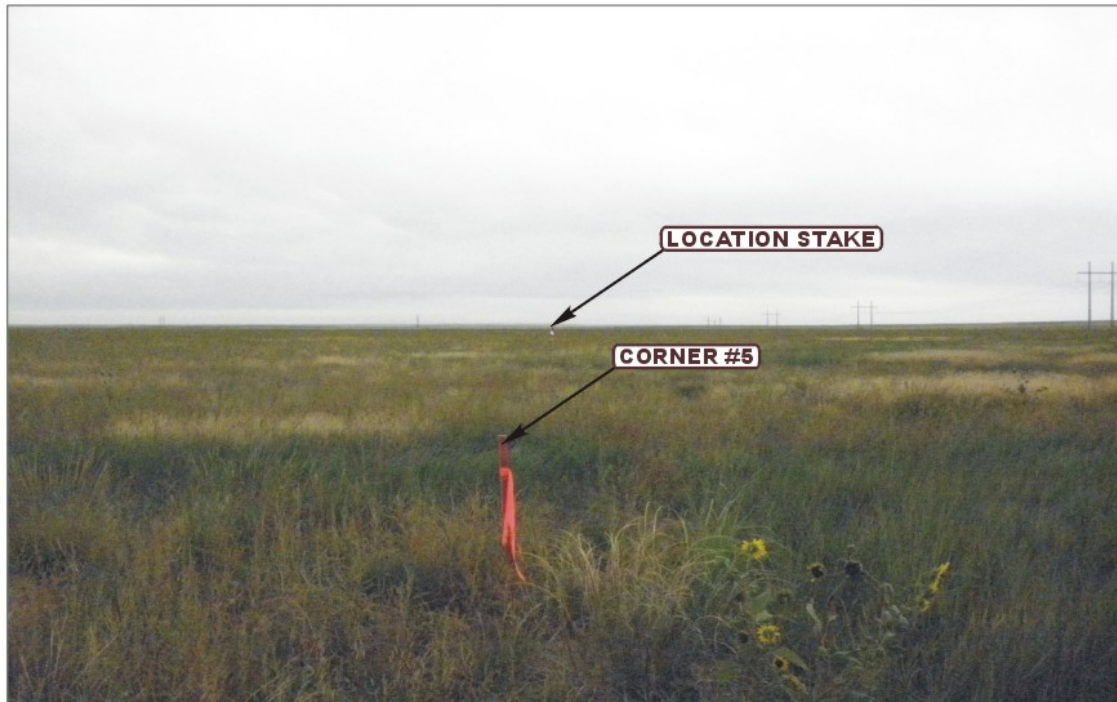


PHOTO: VIEW FROM CORNER #5 TO LOCATION STAKE

CAMERA ANGLE: EASTERLY



PHOTO: VIEW FROM BEGINNING OF PROPOSED ACCESS

CAMERA ANGLE: EASTERLY



UELS Uintah Engineering & Land Surveying
85 South 200 East Vernal, Utah 84078
(435) 789-1017 * FAX (435) 789-1813

LOCATION PHOTOS

11 **02** **11**
MONTH DAY YEAR

PHOTO
P1

TAKEN BY: D.N. DRAWN BY: J.L.H. REVISED: 08-30-12

BILL BARRETT CORPORATION
GREASEWOOD #04-08H
LOCATED IN WELD COUNTY, COLORADO
SECTION 8, T6N, R61W, 6th P.M.



PHOTO: VIEW OF LOCATION STAKE

CAMERA ANGLE: NORTHERLY



PHOTO: VIEW OF LOCATION STAKE

CAMERA ANGLE: EASTERLY



UELS Uintah Engineering & Land Surveying
85 South 200 East Vernal, Utah 84078
(435) 789-1017 * FAX (435) 789-1813

LOCATION PHOTOS

11 **02** **11**
MONTH DAY YEAR

PHOTO
P2

TAKEN BY: D.N. DRAWN BY: J.L.H. REVISED: 08-30-12

BILL BARRETT CORPORATION
GREASEWOOD #04-08H
LOCATED IN WELD COUNTY, COLORADO
SECTION 8, T6N, R61W, 6th P.M.



PHOTO: VIEW OF LOCATION STAKE

CAMERA ANGLE: SOUTHERLY



PHOTO: VIEW OF LOCATION STAKE

CAMERA ANGLE: WESTERLY



UELS

Uintah Engineering & Land Surveying
85 South 200 East Vernal, Utah 84078
(435) 789-1017 * FAX (435) 789-1813

LOCATION PHOTOS

11 **02** **11**
MONTH DAY YEAR

PHOTO
P3

TAKEN BY: D.N.

DRAWN BY: J.L.H.

REVISED: 08-30-12