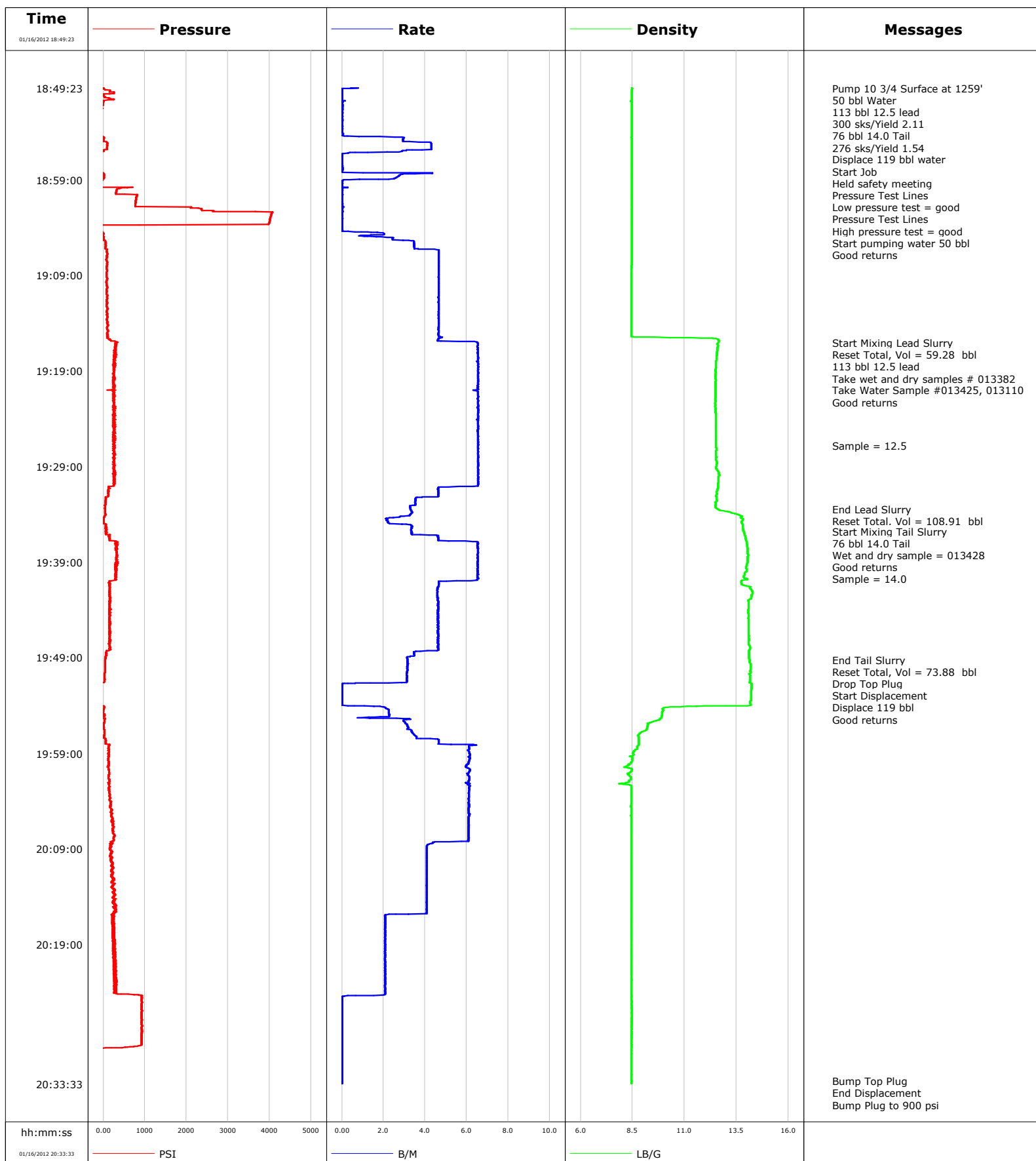


Well Kimball Mtn.DH7A-32
Field Kimbal Mtn.
Engineer Tom Leduc
Country United States

Client Encana
SIR No.
Job Type 10 3/4 Surface
Job Date 01-16-2012





Cementing Service Report

				Customer Encana			Job Number BTX1-00014								
Well Kimball Mtn.DH7A-32 DH7A-32			Location (legal) C08			Schlumberger Location Grand Junction		Job Start Jan/16/2012							
Field Kimbal Mtn.		Formation Name/Type Shale		Deviation		Bit Size 14.8 in		Well MD		Well TVD 1259.0 ft					
County Garfield		State/Province Colorado		BHP		BHST 95 degF		BHCT 82 degF		Pore Press. Gradient					
Well Master		API/UWI													
Rig Name Patterson 326		Drilled For Gas		Service Via Land		Casing/Liner									
						Depth, ft		Size, in		Weight, lb/ft		Grade		Thread	
Offshore Zone		Well Class New		Well Type Development		1259.0		10.750		40.5		K55		8RD	
						0.0		0.000		0.0					
Drilling Fluid Type Bentonite		Max. Density 8.90 lb/gal		Plastic Viscosity 40.000 cP		Tubing/Drill Pipe									
						Depth,		Size,		Weight,		Grade		Thread	
Service Line Cementing		Job Type 10 3/4 Surface													
Max. Allowed Tub. Press 3000 psi		Max. Allowed Ann. Press 500 psi		WH Connection 10 3/4		Perforations/Open Hole									
						Top,		Bottom,				No. of Shots		Total Interval	
Service Instructions 300 sks of 12.5 G Lead 276 sks of 14.0 G Tail														Diameter	
Treat Down Casing				Displacement 118.9 bbl				Packer Type				Packer Depth			
Tubing Vol.				Casing Vol. 123.0 bbl				Annular Vol. 142.0 bbl				Openhole Vol. 283.0 bbl			
Casing/Tubing Secured <input checked="" type="checkbox"/>		1 Hole Vol. Circulated prior to Cement <input checked="" type="checkbox"/>				Casing Tools				Squeeze Job					
Lift Pressure 562 psi				Shoe Type Float				Squeeze Type							
Pipe Rotated <input type="checkbox"/>		Pipe Reciprocated <input type="checkbox"/>		Shoe Depth 1259.0 ft				Tool Type							
No. Centralizers		Top Plugs 1		Bottom Plugs 0		Stage Tool Type				Tool Depth					
Cement Head Type Single				Stage Tool Depth				Tail Pipe Size							
Job Scheduled For Jan/16/2012 14:00		Arrived on Location Jan/16/2012 14:00		Leave Location Jan/16/2012 22:00		Collar Type Float		Tail Pipe Depth							
						Collar Depth 1212.0 ft		Sqz. Total Vol.							
Date	Time 24-hr clock	Treating Pressure PSI		Flow Rate B/M		Density LB/G		Volume BBL		Message					
01/16/2012	18:15:34									Started Acquisition					
01/16/2012	18:49:23	13		0.5		8.47		0.0							
01/16/2012	18:49:24									Pump 10 3/4 Surface at 1259'					
01/16/2012	18:49:24									50 bbl Water					
01/16/2012	18:49:24									113 bbl 12.5 lead					
01/16/2012	18:49:24	9		0.5		8.47		0.0							
01/16/2012	18:49:25									300 sks/Yield 2.11					
01/16/2012	18:49:25									76 bbl 14.0 Tail					
01/16/2012	18:49:25									276 sks/Yield 1.54					
01/16/2012	18:49:25	11		0.4		8.47		0.0							
01/16/2012	18:49:26									Displace 119 bbl water					
01/16/2012	18:49:26	11		0.8		8.46		0.0							
01/16/2012	18:49:31									Start Job					
01/16/2012	18:49:31	23		0.0		8.48		0.1							
01/16/2012	18:49:38									Held safety meeting					
01/16/2012	18:49:38	100		0.0		8.47		0.1							
01/16/2012	18:49:40									Pressure Test Lines					
01/16/2012	18:49:40	162		0.0		8.47		0.1							
01/16/2012	18:49:41									Low pressure test = good					
01/16/2012	18:49:41	169		0.0		8.47		0.1							
01/16/2012	18:49:43									Pressure Test Lines					

Well			Field		Job Start		Customer		Job Number	
Kimball Mtn.DH7A-32 DH7A-32			Kimbal Mtn.		Jan/16/2012		Encana		BTX1-00014	
Date	Time 24-hr clock	Treating Pressure PSI		Flow Rate B/M	Density LB/G		Volume BBL		Message	
01/16/2012	18:49:45								High pressure test = good	
01/16/2012	18:49:45								Start pumping water 50 bbl	
01/16/2012	18:49:45	163		0.0	8.47		0.1			
01/16/2012	18:50:09								Good returns	
01/16/2012	18:50:09	7		0.0	8.46		0.1			
01/16/2012	18:50:34	262		0.0	8.46		0.1			
01/16/2012	18:52:14	-49		0.0	8.46		0.1			
01/16/2012	18:53:54	-51		0.0	8.46		0.1			
01/16/2012	18:55:34	97		4.3	8.46		4.0			
01/16/2012	18:57:14	-62		0.0	8.46		6.1			
01/16/2012	18:58:54	7		2.5	8.46		8.0			
01/16/2012	19:00:34	817		0.0	8.46		8.2			
01/16/2012	19:02:14	2380		0.0	8.46		8.2			
01/16/2012	19:03:54	-33		0.0	8.46		8.3			
01/16/2012	19:05:34	59		3.5	8.46		10.8			
01/16/2012	19:07:14	78		4.7	8.45		17.7			
01/16/2012	19:08:54	82		4.6	8.45		25.4			
01/16/2012	19:10:34	80		4.7	8.45		33.2			
01/16/2012	19:12:14	80		4.6	8.45		40.9			
01/16/2012	19:13:54	113		4.6	8.45		48.7			
01/16/2012	19:15:34	104		4.7	12.15		56.5			
01/16/2012	19:16:03								Start Mixing Lead Slurry	
01/16/2012	19:16:03	318		6.5	12.63		58.9			
01/16/2012	19:16:06								Reset Total, Vol = 59.28 bbl	
01/16/2012	19:16:06	284		6.5	12.60		59.3			
01/16/2012	19:16:09								113 bbl 12.5 lead	
01/16/2012	19:16:09								Take wet and dry samples # 013382	
01/16/2012	19:16:09								Take Water Sample #013425, 013110	
01/16/2012	19:16:09	300		6.5	12.59		59.6			
01/16/2012	19:16:10								Good returns	
01/16/2012	19:16:10	315		6.5	12.59		59.7			
01/16/2012	19:17:14	267		6.5	12.56		66.7			
01/16/2012	19:18:54	247		6.5	12.49		77.6			
01/16/2012	19:20:34	242		6.5	12.49		88.5			
01/16/2012	19:22:14	241		6.5	12.49		99.4			
01/16/2012	19:23:54	247		6.5	12.51		110.3			
01/16/2012	19:25:34	255		6.5	12.52		121.2			
01/16/2012	19:26:49								Sample = 12.5	
01/16/2012	19:26:49	291		6.5	12.52		129.3			
01/16/2012	19:27:14	269		6.5	12.53		132.1			
01/16/2012	19:28:54	269		6.5	12.53		143.0			
01/16/2012	19:30:34	264		6.5	12.64		153.9			
01/16/2012	19:32:14	63		3.7	12.54		162.6			
01/16/2012	19:33:28								End Lead Slurry	
01/16/2012	19:33:28	40		3.3	12.62		166.8			
01/16/2012	19:33:52								Reset Total, Vol = 108.91 bbl	
01/16/2012	19:33:52	46		3.3	13.33		168.2			
01/16/2012	19:33:54	48		3.3	13.40		168.3			
01/16/2012	19:35:34	73		3.3	13.82		173.0			
01/16/2012	19:35:44								Start Mixing Tail Slurry	
01/16/2012	19:35:44	76		3.3	13.83		173.5			
01/16/2012	19:35:46								76 bbl 14.0 Tail	
01/16/2012	19:35:46								Wet and dry sample = 013428	
01/16/2012	19:35:46	82		3.4	13.84		173.7			

Well			Field		Job Start		Customer		Job Number	
Kimball Mtn.DH7A-32 DH7A-32			Kimbal Mtn.		Jan/16/2012		Encana		BTX1-00014	
Date	Time 24-hr clock	Treating Pressure PSI	Flow Rate B/M	Density LB/G	Volume BBL	Message				
01/16/2012	19:35:47	81	3.4	13.84	173.7					
01/16/2012	19:35:48					Sample = 14.0				
01/16/2012	19:35:48	81	3.4	13.84	173.8					
01/16/2012	19:37:14	300	6.5	14.01	180.8					
01/16/2012	19:38:54	315	6.5	14.05	191.7					
01/16/2012	19:40:34	294	6.5	13.85	202.5					
01/16/2012	19:42:14	152	4.6	14.28	211.0					
01/16/2012	19:43:54	185	4.6	14.07	218.7					
01/16/2012	19:45:34	142	4.6	14.08	226.4					
01/16/2012	19:47:14	135	4.6	14.10	234.1					
01/16/2012	19:48:54	53	3.2	14.11	241.1					
01/16/2012	19:49:11					End Tail Slurry				
01/16/2012	19:49:11	48	3.2	14.13	242.0					
01/16/2012	19:49:13					Reset Total, Vol = 73.88 bbl				
01/16/2012	19:49:13					Drop Top Plug				
01/16/2012	19:49:13	47	3.2	14.14	242.1					
01/16/2012	19:49:14					Start Displacement				
01/16/2012	19:49:14	47	3.2	14.14	242.1					
01/16/2012	19:49:15					Displace 119 bbl				
01/16/2012	19:49:15	47	3.2	14.14	242.2					
01/16/2012	19:49:16					Good returns				
01/16/2012	19:49:16	47	3.2	14.14	242.2					
01/16/2012	19:50:34	39	3.1	14.17	246.3					
01/16/2012	19:52:14	-32	0.0	14.22	249.7					
01/16/2012	19:53:54	-52	0.0	14.19	249.7					
01/16/2012	19:55:34	28	3.0	9.66	253.1					
01/16/2012	19:57:14	20	3.6	8.79	258.5					
01/16/2012	19:58:54	140	6.1	8.53	267.2					
01/16/2012	20:00:34	126	6.1	8.43	277.4					
01/16/2012	20:02:14	129	6.1	8.19	287.6					
01/16/2012	20:03:54	163	6.1	8.45	297.7					
01/16/2012	20:05:34	209	6.1	8.44	307.9					
01/16/2012	20:07:14	231	6.1	8.45	318.1					
01/16/2012	20:08:54	157	4.1	8.45	327.0					
01/16/2012	20:10:34	214	4.1	8.45	333.8					
01/16/2012	20:12:14	266	4.1	8.45	340.6					
01/16/2012	20:13:54	253	4.1	8.45	347.4					
01/16/2012	20:15:34	315	4.1	8.45	354.2					
01/16/2012	20:17:14	233	2.1	8.45	358.1					
01/16/2012	20:18:54	255	2.1	8.45	361.6					
01/16/2012	20:20:34	292	2.1	8.45	365.0					
01/16/2012	20:22:14	289	2.1	8.45	368.5					
01/16/2012	20:23:54	330	2.1	8.45	371.9					
01/16/2012	20:25:34	928	0.0	8.45	372.8					
01/16/2012	20:27:14	927	0.0	8.45	372.9					
01/16/2012	20:28:54	927	0.0	8.45	372.9					
01/16/2012	20:30:34	-52	0.0	8.45	372.9					
01/16/2012	20:32:14	-45	0.0	8.45	372.9					
01/16/2012	20:33:15					Bump Top Plug				
01/16/2012	20:33:15	-45	0.0	8.45	372.9					
01/16/2012	20:33:16					End Displacement				
01/16/2012	20:33:16	-46	0.0	8.45	372.9					
01/16/2012	20:33:27					Bump Plug to 900 psi				
01/16/2012	20:33:27					Bled Off Pressure				

Well			Field		Job Start	Customer	Job Number
Kimball Mtn.DH7A-32 DH7A-32			Kimbal Mtn.		Jan/16/2012	Encana	BTX1-00014
Date	Time 24-hr clock	Treating Pressure PSI	Flow Rate B/M	Density LB/G	Volume BBL	Message	
01/16/2012	20:33:28					Floats Held	
01/16/2012	20:33:28					0.5 bbl Back	
01/16/2012	20:33:28	-46	0.0	8.45	372.9		
01/16/2012	20:33:29					60 bbl Cement to Surface	
01/16/2012	20:33:29					Rig Down	
01/16/2012	20:33:29	-46	0.0	8.45	372.9		

Post Job Summary

Average Pump Rates, bbl/min					Volume of Fluid Injected, bbl			
Slurry 3.7	N2	Mud 0.0	Maximum Rate 6.6	Total Slurry 372.9	Mud 0.0	Spacer 58.8	N2	
Treating Pressure Summary, psi					Breakdown Fluid			
Maximum 4067	Final 0	Average 303	Bump Plug to 900	Breakdown	Type	Volume	Density	
Avg. N2 Percent		Designed Slurry Volume 188.0 bbl	Displacement 130.9 bbl	Mix Water Temp 66 degF	Cement Circulated to Surface? <input checked="" type="checkbox"/>	Volume		
					Washed Thru Perfs <input type="checkbox"/>	To		
Customer or Authorized Representative Norm Mcreary			Schlumberger Supervisor Tom Leduc			Circulation Lost <input type="checkbox"/>	Job Completed <input checked="" type="checkbox"/>	
						-	-	