

# WELL LOCATION

## T4S, R64W, 6th P.M.

2004 Private Alum.  
Cap 0.5' Below Ground  
Lat: 39.709800°  
Long: 104.527528°

2012 Private Alum.  
Cap 0.5' High  
Lat: 39.709397°  
Long: 104.508647°

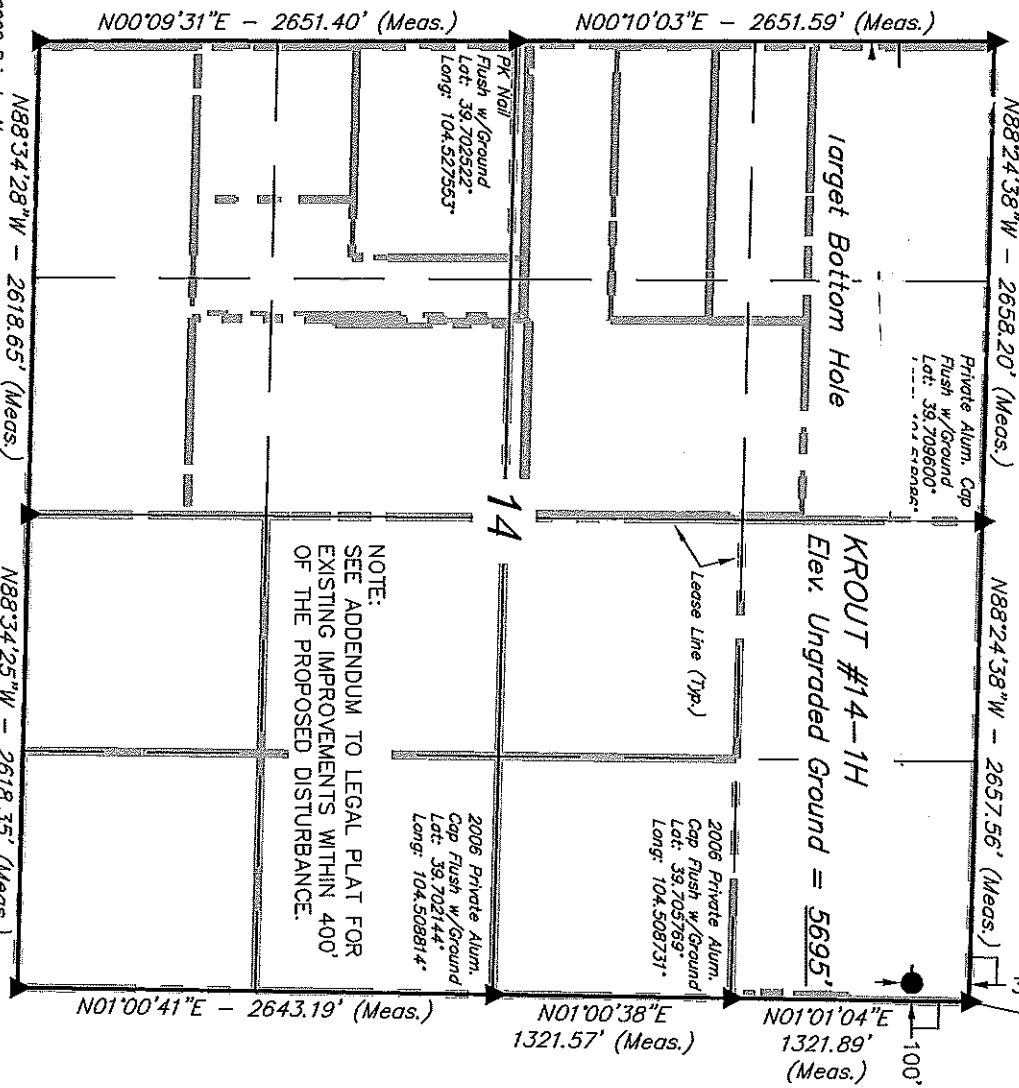
Well location, KROUT #14-1H, located as shown in the NE 1/4 NE 1/4 of Section 14, T4S, R64W, 6th P.M., Arapahoe County, Colorado.

### BASIS OF ELEVATION

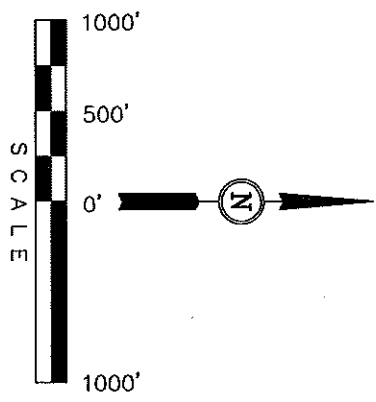
BENCHMARK 374 LOCATED ON THE SECTION LINE BETWEEN SECTIONS 12 & 13, T5S, R64W, 6th, P.M., TAKEN FROM 1988 PUBLISHED DATUM BY THE UNITED STATES DEPARTMENT OF THE INTERIOR, GEOLOGICAL SURVEY AS BEING 6054.61 FEET.

### BASIS OF BEARINGS

BASIS OF BEARINGS IS A G.P.S. OBSERVATION.



NOTE:  
SEE ADDENDUM TO LEGAL PLAT FOR  
EXISTING IMPROVEMENTS WITHIN 400'  
OF THE PROPOSED DISTURBANCE.



### CERTIFICATE

THIS IS TO CERTIFY THAT THE ABOVE PLAT WAS PREPARED FROM FIELD NOTES OF ACTUAL SURVEYS MADE BY ME OR UNDER MY SUPERVISION AND THAT THE SAME ARE TRUE AND CORRECT TO THE BEST OF MY KNOWLEDGE AND BELIEF.

REGISTERED LAND SURVEYOR  
REGISTRATION NO. 10179  
STATE OF COLORADO 08-16-12

UINTAH ENGINEERING & LAND SURVEYING  
85 SOUTH 200 EAST - VERNAL, UTAH 84078  
(435) 789-1017

SCALE	DATE SURVEYED:	DATE DRAWN:
1" = 1000'	07-16-12	07-19-12

PARTY	REFERENCES
J.H. C.M. J.W.	G.L.O. PLAT

WEATHER	FILE
SUNNY	CONOCO PHILLIPS COMPANY

PDOP = 1.4

NAD 83 (SURFACE LOCATION)  
LATITUDE = 39°42'30.76" (39.708544)  
LONGITUDE = 104°30'32.48" (104.509022)

NAD 27 (SURFACE LOCATION)  
LATITUDE = 39°42'30.81" (39.708558)  
LONGITUDE = 104°30'30.61" (104.508503)

### LEGEND:

- 90° SYMBOL
- PROPOSED WELL HEAD.
- SECTION CORNERS LOCATED

# SECTION BREAKDOWN T4S, R64W, 6th P.M.

ConocoPhillips Company

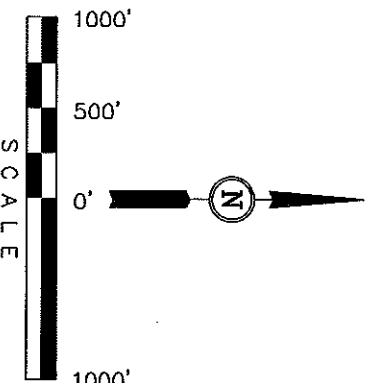
Well location, KROUT #14-1H, located as shown in the NE 1/4 NE 1/4 of Section 14, T4S, R64W, 6th P.M., Arapahoe County, Colorado.

## BASIS OF ELEVATION

BENCHMARK 374 LOCATED ON THE SECTION LINE BETWEEN SECTIONS 12 & 13, T5S, R64W, 6th. P.M., TAKEN FROM 1988 PUBLISHED DATUM BY THE UNITED STATES DEPARTMENT OF THE INTERIOR, GEOLOGICAL SURVEY AS BEING 6054.61 FEET.

## BASIS OF BEARINGS

BASIS OF BEARINGS IS A G.P.S. OBSERVATION.



## CERTIFICATE

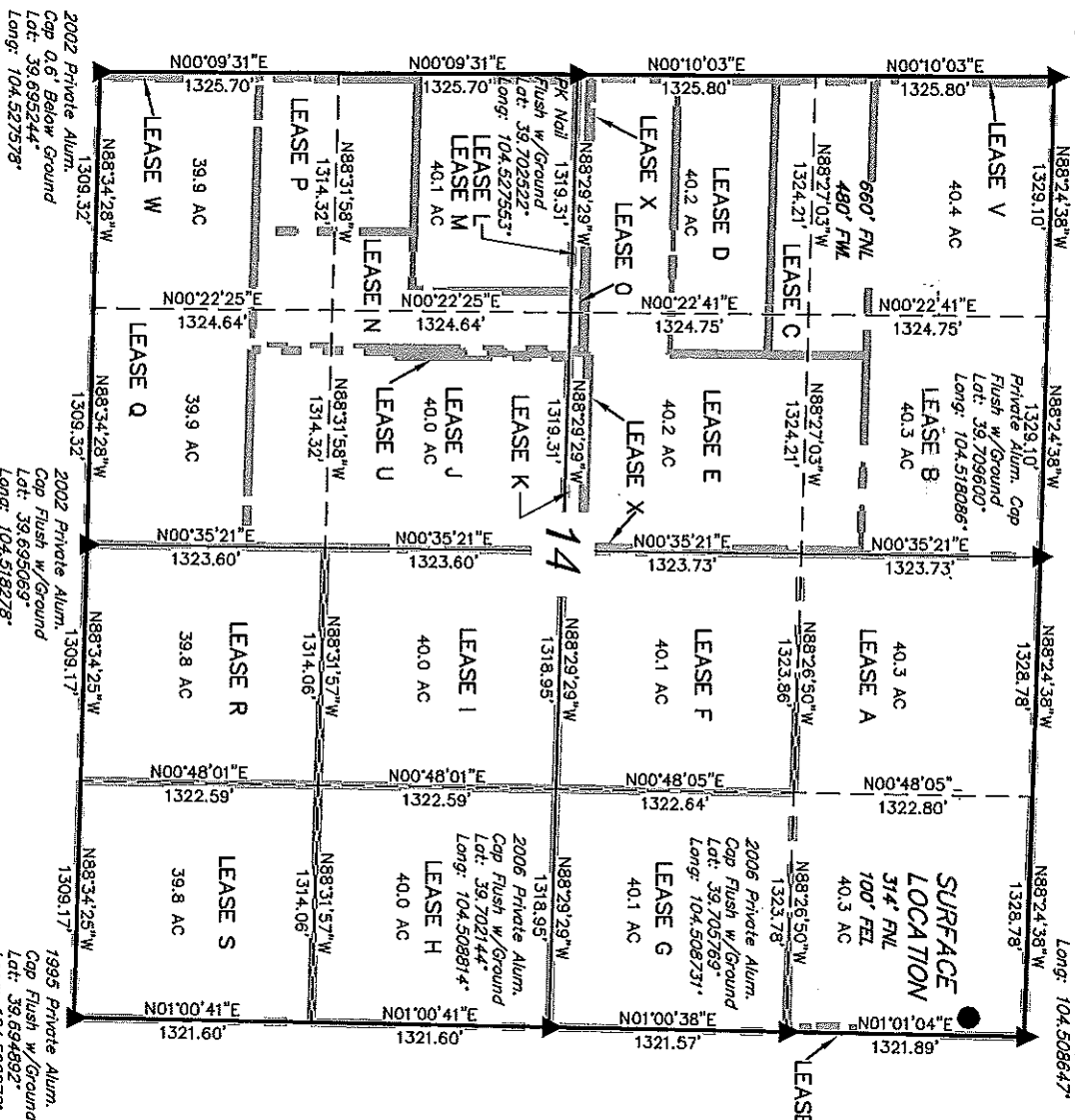
THIS IS TO CERTIFY THAT THE ABOVE PLAT WAS PREPARED FROM FIELD NOTES OF ACTUAL SURVEYS MADE BY ME OR UNDER MY SUPERVISION AND THAT THE SAME ARE TRUE AND CORRECT TO THE BEST OF MY KNOWLEDGE AND BELIEF.

REGISTERED AND QUALIFIED  
SURVEYOR  
STATE OF COLORADO  
08-15-12

UNTIAH ENGINEERING & LAND SURVEYING  
85 SOUTH 200 EAST - VERNAL, UTAH 84078  
(435) 789-1017

SCALE 1" = 1000'  
DATE SURVEYED: 07-16-12  
DATE DRAWN: 07-19-12

PARTY J.H. C.M. J.W.  
REFERENCES G.L.O. PLAT  
WEATHER SUNNY  
FILE CONOCO PHILLIPS COMPANY



## LEGEND:

- = 90° SYMBOL
- = PROPOSED WELL HEAD.
- ▲ = SECTION CORNERS LOCATED.

SHEET 1 OF 2

NAD 83 (SURFACE LOCATION)	
LATITUDE = 39°42'30.76" (39.708544)	
LONGITUDE = 104°30'32.48" (104.509022)	
NAD 27 (SURFACE LOCATION)	
LATITUDE = 39°42'30.81" (39.708558)	
LONGITUDE = 104°30'30.61" (104.508503)	

# SECTION BREAKDOWN T4S, R64W, 6th P.M.

ConocoPhillips Company

Well location, KROUT #14-1H, located as shown in the NE 1/4 NE 1/4 of Section 14, T4S, R64W, 6th P.M., Arapahoe County, Colorado.

## ACREAGES

LEASE	OWNER	ACRES
A	ConocoPhillips Company	80.0
B	ConocoPhillips Company	60.0
C	50% CHESAPEAKE EXPL. LLC & 50% ConocoPhillips	19.0
D	ConocoPhillips Company	19.0
E	ConocoPhillips Company	54.7
F	ConocoPhillips Company	40.1
G	ConocoPhillips Company	40.1
H	ConocoPhillips Company	40.0
I	ConocoPhillips Company	40.0
J	CHESAPEAKE EXPLORATION, LLC	44.2
K	50% CHESAPEAKE EXPL. LLC & 50% ConocoPhillips	2.4
L	ConocoPhillips Company	1.6
M	ConocoPhillips Company	23.7
N	CHESAPEAKE EXPLORATION, LLC	19.1
O	50% CHESAPEAKE EXPL. LLC & 50% ConocoPhillips	0.4
P	ConocoPhillips Company	17.2
Q	ConocoPhillips Company	52.6
R	CHESAPEAKE EXPLORATION, LLC	39.8
S	CHESAPEAKE EXPLORATION, LLC	39.8
T	ConocoPhillips Company	0.5
U	ARAPAHOE COUNTY (OPEN)	0.7
V	50% ConocoPhillips & 50% ARAPAHOE CNTY (OPEN)	1.8
W	ARAPAHOE COUNTY (OPEN)	1.8
X	50% ConocoPhillips & 50% ARAPAHOE CNTY (OPEN)	2.8
		641.3

## CERTIFICATE

THIS IS TO CERTIFY THAT THE ABOVE PLATS WERE PREPARED FROM FIELD NOTES OF ACTUAL SURVEYS MADE BY ME OR UNDER MY SUPERVISION AND THAT THE SAME ARE TRUE AND CORRECT TO THE BEST OF MY KNOWLEDGE AND BELIEF.

REGISTERED LAND SURVEYOR  
STATE OF COLORADO  
08-15-12

UINTAH ENGINEERING & LAND SURVEYING

85 SOUTH 200 EAST - VERNAL, UTAH 84078

(435) 789-1017

SCALE 1" = 1000' DATE SURVEYED: 07-16-12 DATE DRAWN: 07-19-12

PARTY J.H. C.M. J.W. REFERENCES G.L.O. PLAT

WEATHER SUNNY FILE CONOCO PHILLIPS COMPANY

# ConocoPhillips Company

## ADDENDUM TO LEGAL PLAT FOR

KROUT #14-1H

SECTION 14, T4S, R64W, 6th P.M.

314' FNL 100' FEL

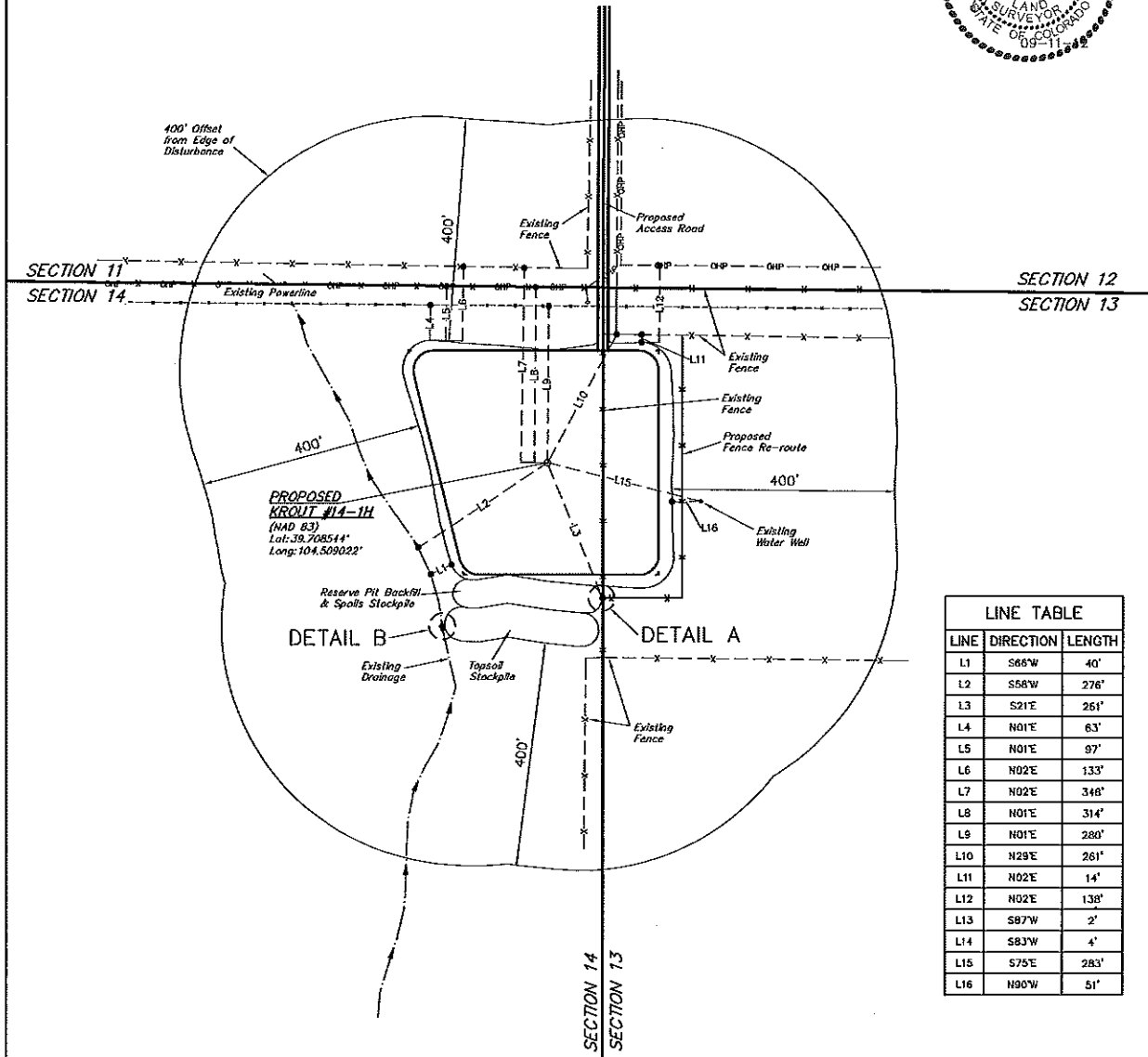
SCALE: 1" = 200'

DATE: 07-20-12

DRAWN BY: J.W.

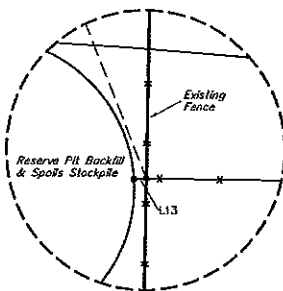
REVISED: 09-05-12

REVISED: 09-11-12

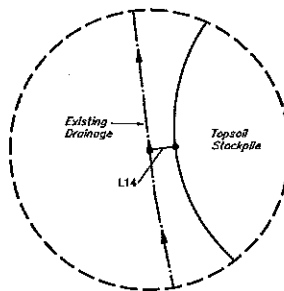


LINE TABLE

LINE	DIRECTION	LENGTH
L1	S88°W	40'
L2	S58°W	276'
L3	S21°E	261'
L4	N01°E	63'
L5	N01°E	97'
L6	N02°E	133'
L7	N02°E	348'
L8	N01°E	314'
L9	N01°E	280'
L10	N29°E	261'
L11	N02°E	14'
L12	N02°E	138'
L13	S87°W	2'
L14	S83°W	4'
L15	S75°E	283'
L16	N90°W	51'



DETAIL A  
SCALE: NONE



DETAIL B  
SCALE: NONE