

ConocoPhillips Company

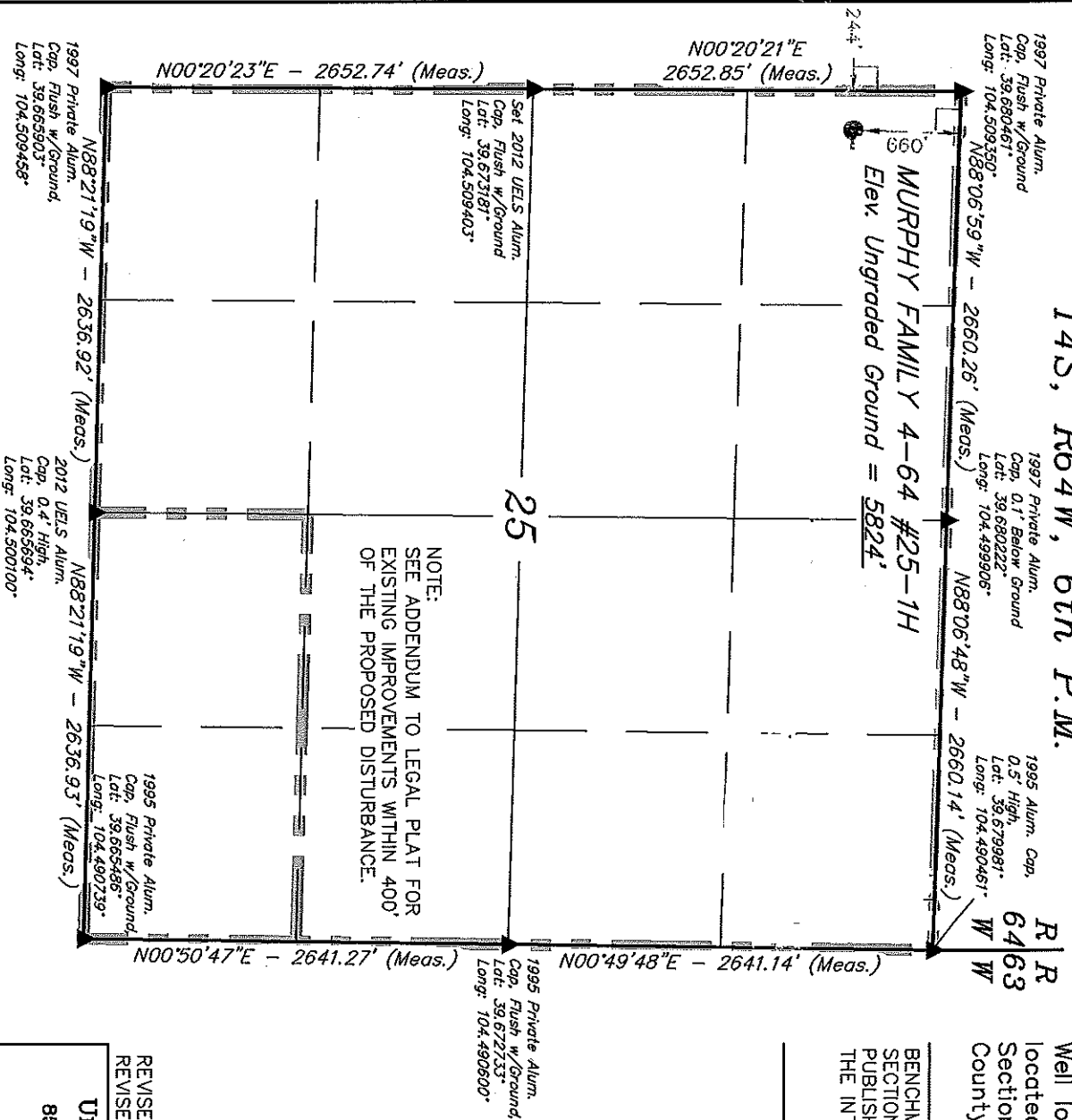
Well location, MURPHY FAMILY 4-64 #25-1H,
located as shown in the NW 1/4 NW 1/4 of
Section 25, T4S, R64W, 6th P.M., Arapahoe
County, Colorado.

BASIS OF ELEVATION

BENCHMARK 374 LOCATED ON THE SECTION LINE BETWEEN SECTIONS 12 & 13, T5S, R64W, 6th. P.M., TAKEN FROM 1988 PUBLISHED DATUM BY THE UNITED STATES DEPARTMENT OF THE INTERIOR, GEOLOGICAL SURVEY AS BEING 6054.61 FEET.

BASIS OF BEARINGS

BASIS OF BEARINGS IS A G.P.S. OBSERVATION.



CERTIFICATE

THIS IS TO CERTIFY THAT THE ABOVE PLAYERS PREPARED FROM FIELD NOTES OF ACTUAL SURETYS MADE BY AGENTS UNDER MY SUPERVISION AND THAT THE SAME ARE TRUE AND CORRECT TO THE BEST OF MY KNOWLEDGE AND BELIEF.

REVISED: 10-05-12
REVISED: 08-08-12

REGISTERED MAIL AND RETURN RECEIPT
REGISTRATION NO. 12345678
STATE OF COLORADO 90-05-12

UINTAH ENGINEERING & LAND SURVEYING
85 SOUTH 200 EAST - VERNAL, UTAH 84078
(435) 789-1017

SCALE
1" = 1000'

DATE SURVEYED:	DATE DRAWN:
07-13-12	07-17-12

PARTY

REFERENCES

WEATHER

FIL

SUNNY

CONOCOPHILLIPS COMPANY

SECTION BREAKDOWN T4S, R64W, 6th P.M.

1997 Private Alum.
Cap. Flush w/Ground
Lot: 39.650461
Long: 104.509350

1997 Private Alum.
Cap. 0.1' Below Ground
Lot: 39.680222
Long: 104.499906

1995 Alum. Cap.
0.5' High
Lot: 39.679981
Long: 104.490461

R
R
6463
W
W

ConocoPhillips Company

Well location, MURPHY FAMILY 4-64 #25-1H,
located as shown in the NW 1/4 NW 1/4 of
Section 25, T4S, R64W, 6th P.M., Arapahoe
County, Colorado.

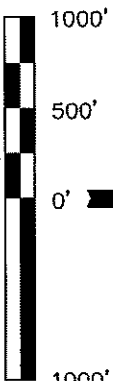
BASIS OF ELEVATION

BENCHMARK 374 LOCATED ON THE SECTION LINE BETWEEN
SECTIONS 12 & 13, T5S, R64W, 6th P.M., TAKEN FROM 1988
PUBLISHED DATUM BY THE UNITED STATES DEPARTMENT OF
THE INTERIOR, GEOLOGICAL SURVEY AS BEING 6054.61 FEET.

BASIS OF BEARINGS

BASIS OF BEARINGS IS A G.P.S. OBSERVATION.

ACREAGES		
LEASE	OWNER	ACRES
A	MURPHY FAMILY PARTNERSHIP, LTD	563.6
B	METRO MORTGAGE, INC.	80.1
TOTAL GROSS ACRES		643.7



SCALE

CERTIFICATE

THIS IS TO CERTIFY THAT THE ABOVE PLAT WAS PREPARED FROM
FIELD NOTES OF ACTUAL SURVEYS MADE BY ME OR UNDER MY
SUPERVISION AND THAT THE SAME ARE TRUE AND CORRECT TO THE
BEST OF MY KNOWLEDGE AND BELIEF.

REVISED: 10-05-12
REVISED: 08-08-12

REGISTERED LAND SURVEYOR
REGISTRATION NO. 12592
STATE OF COLORADO
98-05-12

UNTAH ENGINEERING & LAND SURVEYING
86 SOUTH 200 EAST - VERNAL, UTAH 84078
(435) 789-1017

PDOP = 1.4

SCALE
1" = 1000'

PARTY
D.L.S. C.T. J.W.

REFERENCES
G.L.O. PLAT

WEATHER
SUNNY

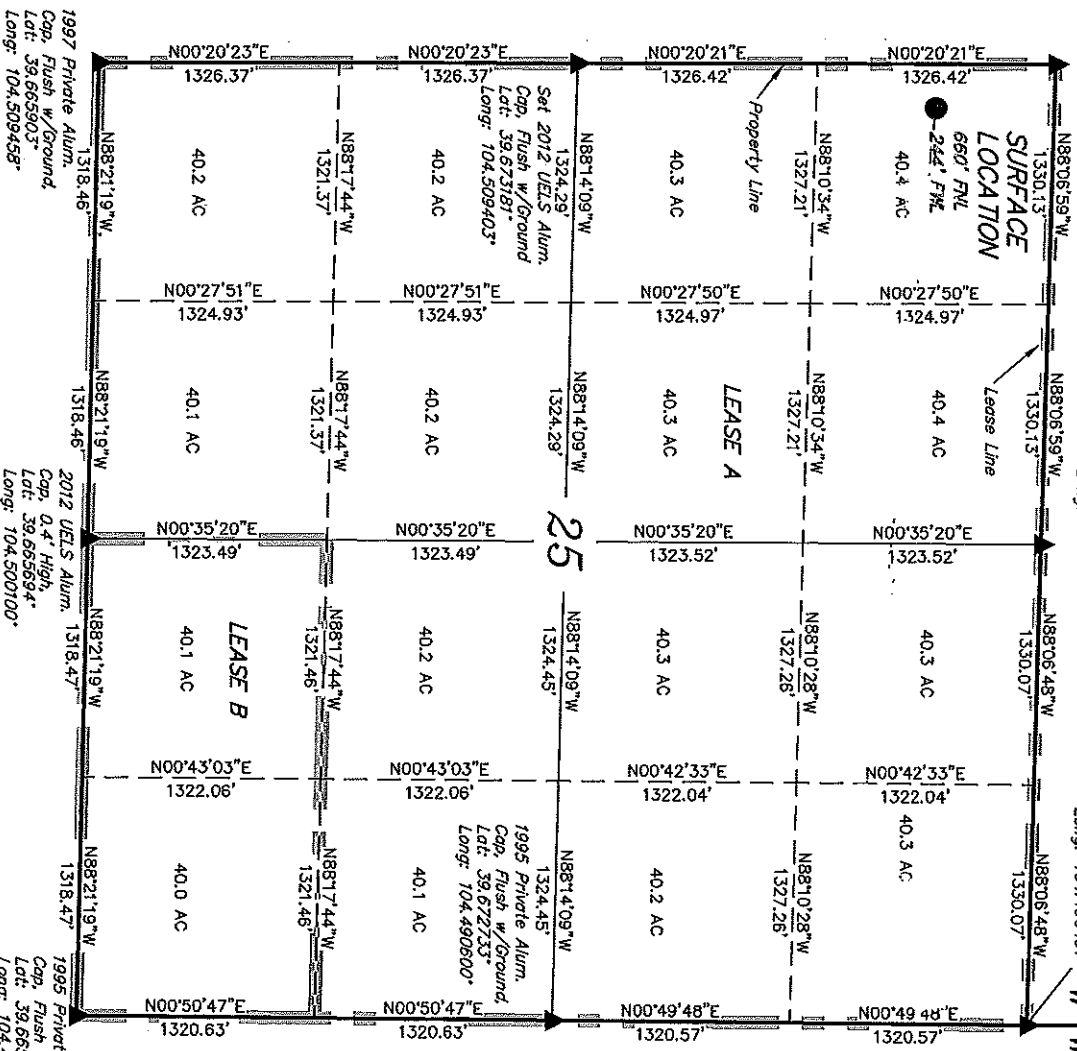
FILE
CONOCOPHILLIPS COMPANY

LEGEND:

— = 90° SYMBOL

● = PROPOSED WELL HEAD.

▲ = SECTION CORNERS LOCATED



1997 Private Alum.
Cap. Flush w/Ground
Lot: 39.650461
Long: 104.509458

2012 UELS Alum.
Cap. 0.4' High
Lot: 39.655844
Long: 104.500100

1995 Private Alum.
Cap. Flush w/Ground
Lot: 39.655486
Long: 104.490739

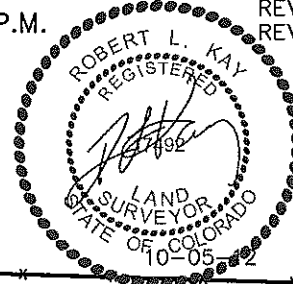
1995 Private Alum.
Cap. Flush w/Ground
Lot: 39.672733
Long: 104.480600

ConocoPhillips Company

ADDENDUM TO LEGAL PLAT FOR

MURPHY FAMILY 4-64 #25-1H
SECTION 25, T4S, R64W, 6th P.M.
660' FNL 244' FWL

SCALE: 1" = 200'
DATE: 07-18-12
DRAWN BY: J.W.
REVISED: 08-27-12
REVISED: 09-17-12
REVISED: 10-05-12



400' Offset
from Edge of
Disturbance

Existing
Fence

Existing
Powerline

Proposed MURPHY FAMILY
#25N-1H
(NAD 83)
Lat: 39.678628°
Long: 104.508494°

Topsoil
Stockpile

Proposed
Access Road

SECTION 26
SECTION 25

LINE TABLE

LINE	DIRECTION	LENGTH
L1	West	39'
L2	West	244'
L3	N03°E	392'
L4	N03°E	610'