

WELL LOCATION  
T4S, R64W, 6th P.M.

ConocoPhillips Company

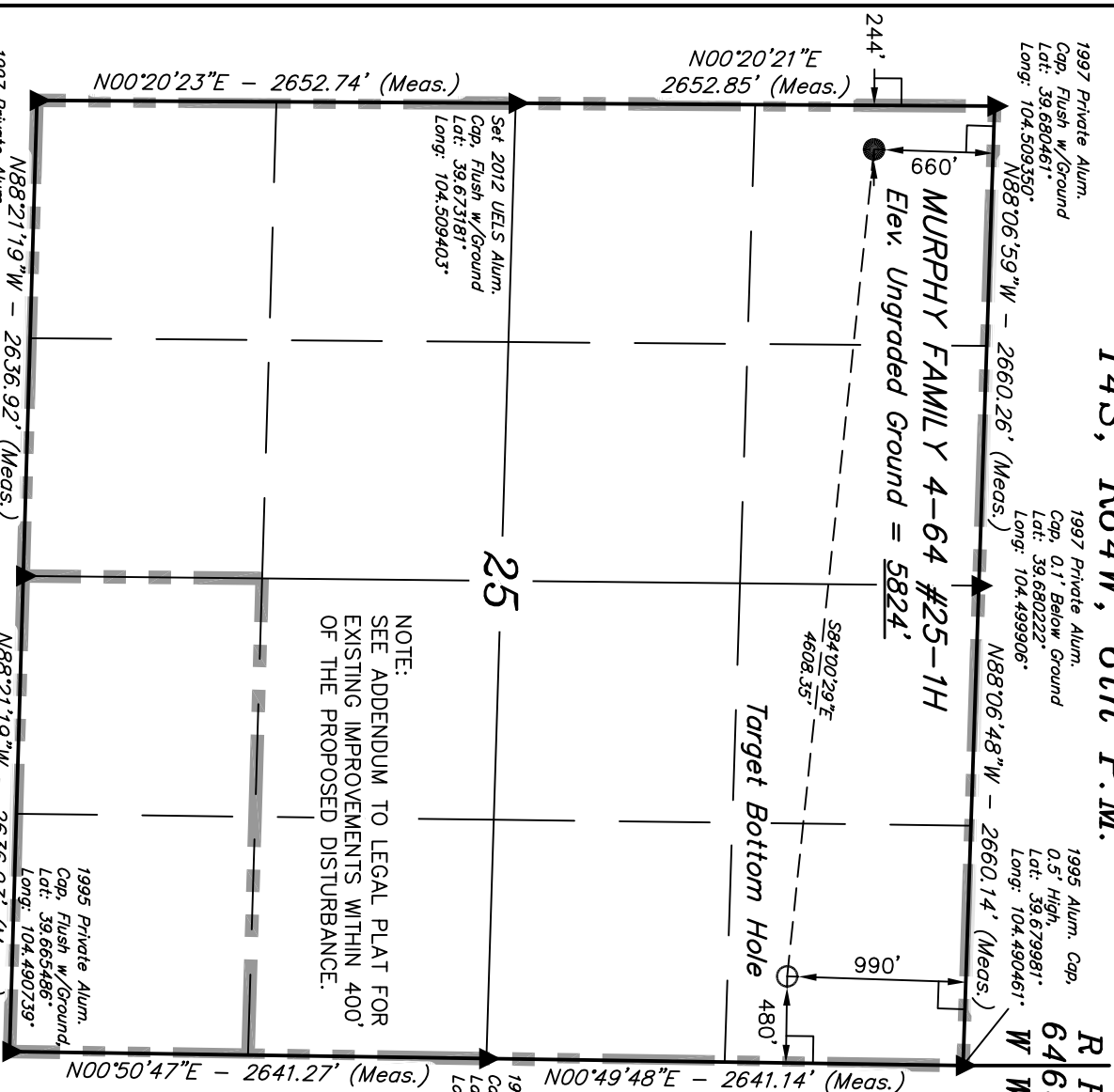
Well location, MURPHY FAMILY 4-64 #25-1H, located as shown in the NW 1/4 NW 1/4 of Section 25, T4S, R64W, 6th P.M., Arapahoe County, Colorado.

BASIS OF ELEVATION

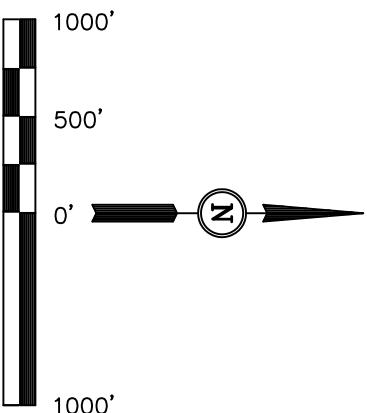
BENCHMARK 374 LOCATED ON THE SECTION LINE BETWEEN SECTIONS 12 & 13, T5S, R64W, 6th. P.M., TAKEN FROM 1988 PUBLISHED DATUM BY THE UNITED STATES DEPARTMENT OF THE INTERIOR, GEOLOGICAL SURVEY AS BEING 6054.61 FEET.

BASIS OF BEARINGS

BASIS OF BEARINGS IS A G.P.S. OBSERVATION.



NOTE:  
SEE ADDENDUM TO LEGAL PLAT FOR  
EXISTING IMPROVEMENTS WITHIN 400'  
OF THE PROPOSED DISTURBANCE.



CERTIFICATE

THIS IS TO CERTIFY THAT THE ABOVE PLAT WAS PREPARED FROM FIELD NOTES OF ACTUAL SURVEYS MADE BY ME OR UNDER MY SUPERVISION AND THAT THE SAME ARE TRUE AND CORRECT TO THE BEST OF MY KNOWLEDGE AND BELIEF.

REGISTERED LAND SURVEYOR  
REGISTRATION NO. 12492  
STATE OF COLORADO  
90-05-12

UINTAH ENGINEERING & LAND SURVEYING  
85 SOUTH 200 EAST - VERNAL, UTAH 84078  
(435) 789-1017

SCALE	DATE SURVEYED:	DATE DRAWN:
1" = 1000'	07-13-12	07-17-12

PARTY	REFERENCES
D.L.S. C.T. J.W.	G.L.O. PLAT
WEATHER	FILE
SUNNY	CONOCOPHILLIPS COMPANY

LEGEND:

- = 90° SYMBOL
- = PROPOSED WELL HEAD.
- = SECTION CORNERS LOCATED

NAD 83 (TARGET BOTTOM HOLE)	NAD 83 (SURFACE LOCATION)
LATITUDE = 39°40'38.31" (39.677308)	LATITUDE = 39°40'43.06" (39.678628)
LONGITUDE = 104°29'31.98" (104.492217)	LONGITUDE = 104°30'30.58" (104.508494)
NAD 27 (TARGET BOTTOM HOLE)	NAD 27 (SURFACE LOCATION)
LATITUDE = 39°40'38.36" (39.677322)	LATITUDE = 39°40'43.11" (39.678642)
LONGITUDE = 104°29'30.11" (104.491697)	LONGITUDE = 104°30'28.71" (104.507975)

# SECTION BREAKDOWN T4S, R64W, 6th P.M.

1997 Private Alum.  
Cap. Flush w/Ground  
Lat: 39.680461°  
Long: 104.509350°

1997 Private Alum.  
Cap. 0.1' Below Ground  
Lat: 39.680222°  
Long: 104.499906°

1995 Alum. Cap.  
0.5' High  
Lat: 39.679981°  
Long: 104.490461°

R 64  
R 63  
W W

## ConocoPhillips Company

Well location, MURPHY FAMILY 4-64 #25-1H,  
located as shown in the NW 1/4 NW 1/4 of  
Section 25, T4S, R64W, 6th P.M., Arapahoe  
County, Colorado.

### BASIS OF ELEVATION

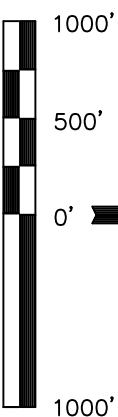
BENCHMARK 374 LOCATED ON THE SECTION LINE BETWEEN  
SECTIONS 12 & 13, T5S, R64W, 6th. P.M., TAKEN FROM 1988  
PUBLISHED DATUM BY THE UNITED STATES DEPARTMENT OF  
THE INTERIOR, GEOLOGICAL SURVEY AS BEING 6054.61 FEET.

### BASIS OF BEARINGS

BASIS OF BEARINGS IS A G.P.S. OBSERVATION.

### ACREAGES

LEASE	OWNER	ACRES
A	MURPHY FAMILY PARTNERSHIP, LTD	563.6
B	METRO MORTGAGE, INC.	80.1
TOTAL GROSS ACRES		643.7



### CERTIFICATE

THIS IS TO CERTIFY THAT THE ABOVE PLAT WAS PREPARED FROM  
FIELD NOTES OF ACTUAL SURVEYS MADE BY ME OR UNDER MY  
SUPERVISION AND THAT THE SAME ARE TRUE AND CORRECT TO THE  
BEST OF MY KNOWLEDGE AND BELIEF.

REGISTERED LAND SURVEYOR  
REGISTRATION NO. 17492  
STATE OF COLORADO  
08-05-12

REVISED: 10-05-12  
REVISED: 08-08-12

UNTAH ENGINEERING & LAND SURVEYING  
85 SOUTH 200 EAST - VERNAL, UTAH 84078  
(435) 789-1017

SCALE 1" = 1000'  
DATE SURVEYED: 07-13-12  
DATE DRAWN: 07-17-12

PARTY D.L.S. C.T. J.W.  
WEATHER SUNNY  
REFERENCES G.L.O. PLAT  
FILE CONOCOPHILLIPS COMPANY

LEGEND:  
= 90° SYMBOL  
= PROPOSED WELL HEAD.  
= SECTION CORNERS LOCATED

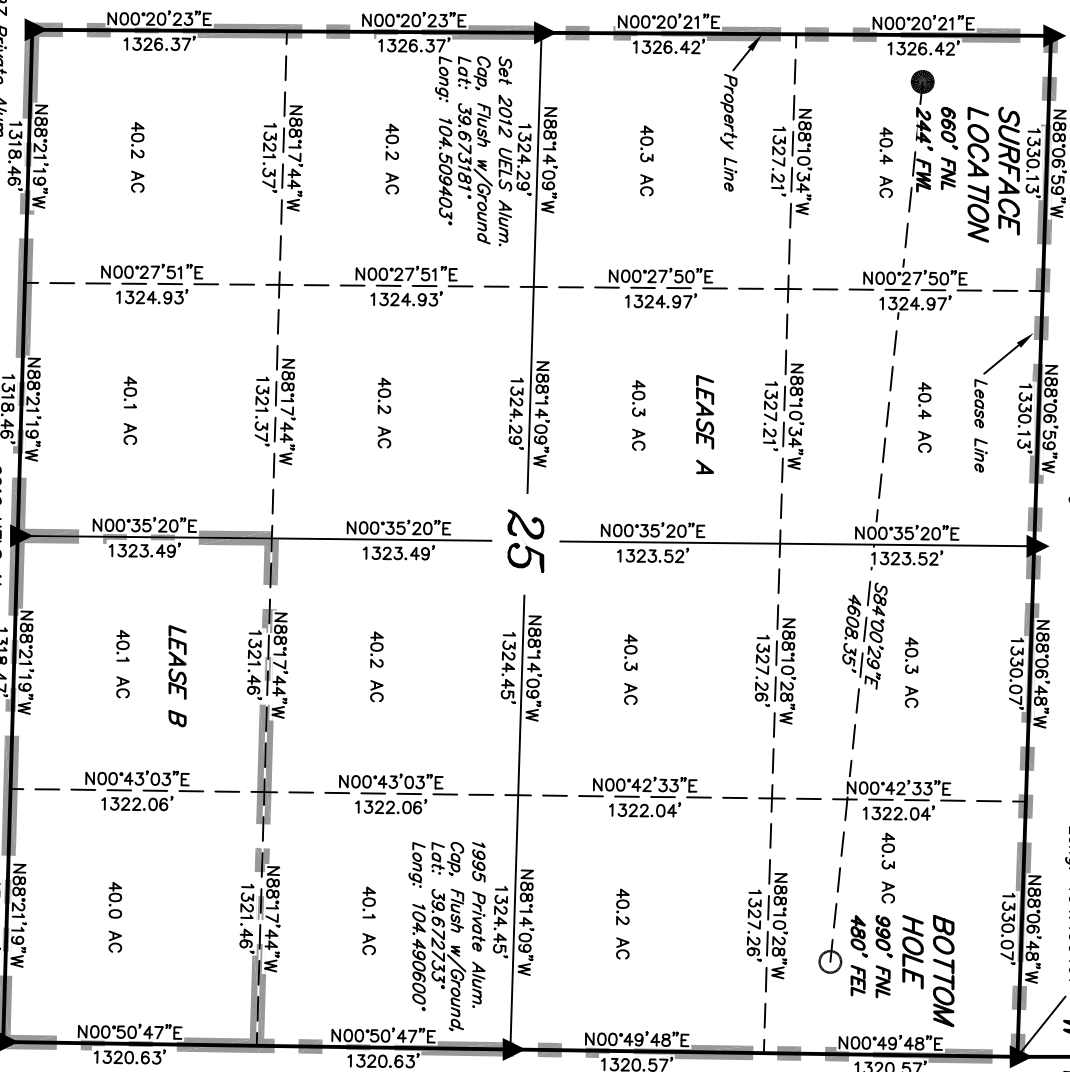
NAD 83 (TARGET BOTTOM HOLE)	NAD 83 (SURFACE LOCATION)
LATITUDE = 39°40'38.31" (39.677308)	LATITUDE = 39°40'43.06" (39.678628)
LONGITUDE = 104°29'31.98" (104.492217)	LONGITUDE = 104°30'30.58" (104.508494)
NAD 27 (TARGET BOTTOM HOLE)	NAD 27 (SURFACE LOCATION)
LATITUDE = 39°40'38.36" (39.677322)	LATITUDE = 39°40'43.11" (39.678642)
LONGITUDE = 104°29'30.11" (104.491697)	LONGITUDE = 104°30'28.71" (104.507975)

PDOP = 1.4

1997 Private Alum.  
Cap. Flush w/Ground  
Lat: 39.665603°  
Long: 104.509458°

2012 UELS Alum.  
Cap. 0.4' High  
Lat: 39.665694°  
Long: 104.500100°

1995 Private Alum.  
Cap. Flush w/Ground  
Lat: 39.665486°  
Long: 104.490739°



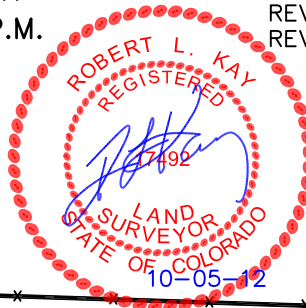


# ConocoPhillips Company

## ADDENDUM TO LEGAL PLAT FOR

MURPHY FAMILY 4-64 #25-1H  
SECTION 25, T4S, R64W, 6th P.M.  
660' FNL 244' FWL

SCALE: 1" = 200'  
DATE: 07-18-12  
DRAWN BY: J.W.  
REVISED: 08-27-12  
REVISED: 09-17-12  
REVISED: 10-05-12



400' Offset  
from Edge of  
Disturbance

Existing  
Fence

Existing  
Powerline

Proposed MURPHY FAMILY  
#25N-1H  
(NAD 83)  
Lat: 39.678628°  
Long: 104.508494°

Topsoil  
Stockpile

Proposed  
Access Road

SECTION 26  
SECTION 25

LINE TABLE

LINE	DIRECTION	LENGTH
L1	West	39'
L2	West	244'
L3	N03°E	392'
L4	N03°E	610'