



SUPERIOR
Hays,
Kansas

COMPENSATED
NEUTRON / DENSITY
PE LOG

Company		MULL DRILLING COMPANY, INC.	
Well		HOFFMAN-BUSBY #1-24	
Field			
County		CHEYENNE	State
State		COLORADO	
Location:		API # : 05-061-07720-00-00 1500' FNL & 660' FEL SE/4 - NE/4	
Permanent Datum		GROUND LEVEL	Elevation
Log Measured From		KELLY BUSHING 11' A.G.L.	4296
Drilling Measured From		KELLY BUSHING	
SEC 24 TWP 14S RGE 45W		Other Services DIL/MEL SONIC	
Date		9/21/12	
Run Number		ONE	
Depth Driller		5600	
Depth Logger		5598	
Bottom Logged Interval		5564	
Top Log Interval		3800	
Casing Driller		13 3/8' @ 474	
Casing Logger			
Bit Size		7 7/8	
Type Fluid in Hole		CHEMICAL MUD	CHLORIDES 2,700 PPM
Density / Viscosity		9.3/57	
pH / Fluid Loss		10.0/6.4	
Source of Sample		FLOWLINE	
Rim @ Meas. Temp		1.00 @ 106F	
Rmf @ Meas. Temp		0.75 @ 106F	
Rmc @ Meas. Temp		1.20 @ 106F	
Source of Rmf / Rmc		MEASURED	
Rim @ BHT		0.82 @ 130F	
Time Circulation Stopped		2 HOURS	
Time Logger on Bottom			
Maximum Recorded Temperature		130F	
Equipment Number		680	
Location		HAYS, KS.	
Recorded By		JEFF GRONEMEG	
Witnessed By		PHIL ASKEY	

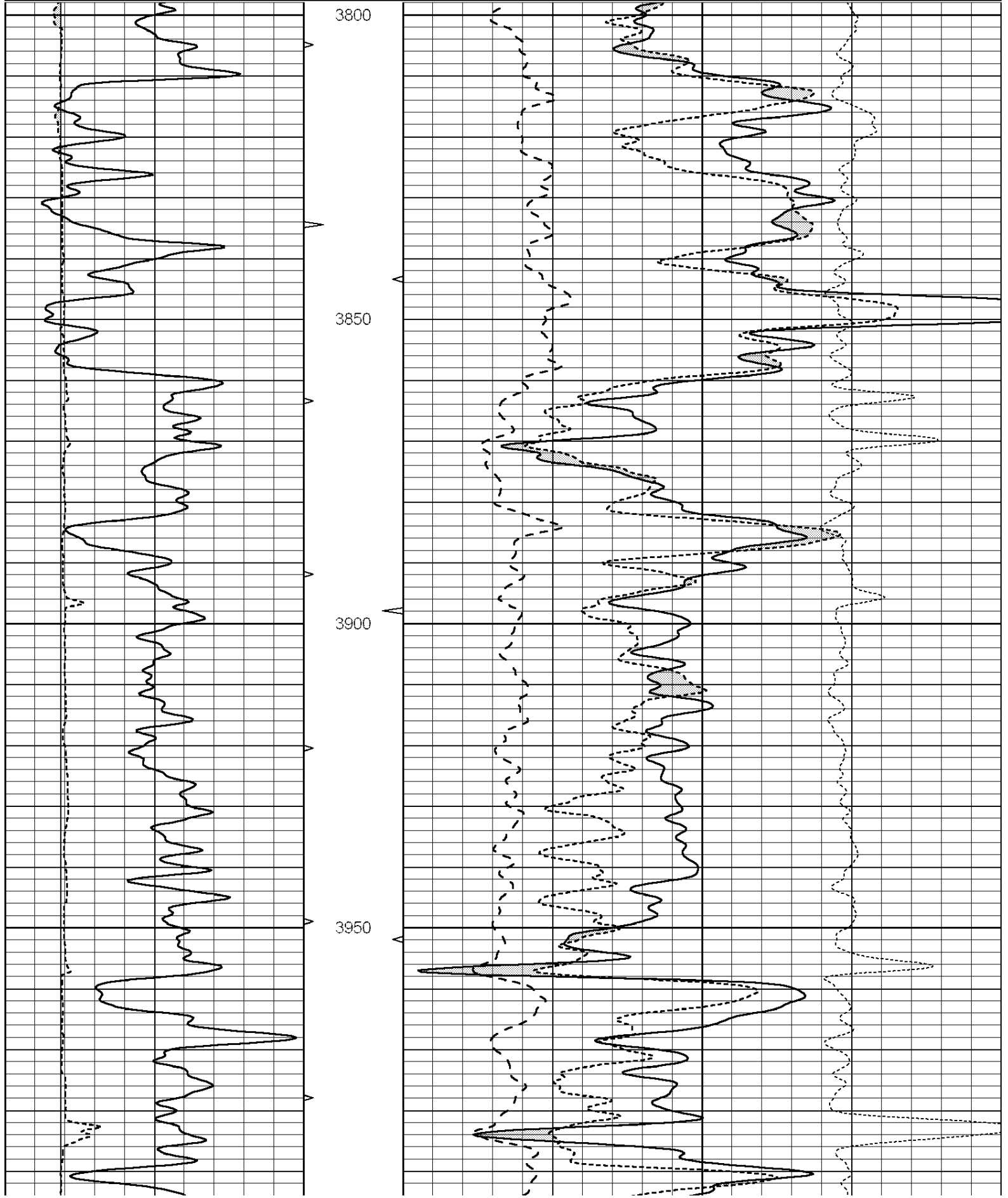
<<< Fold Here >>>

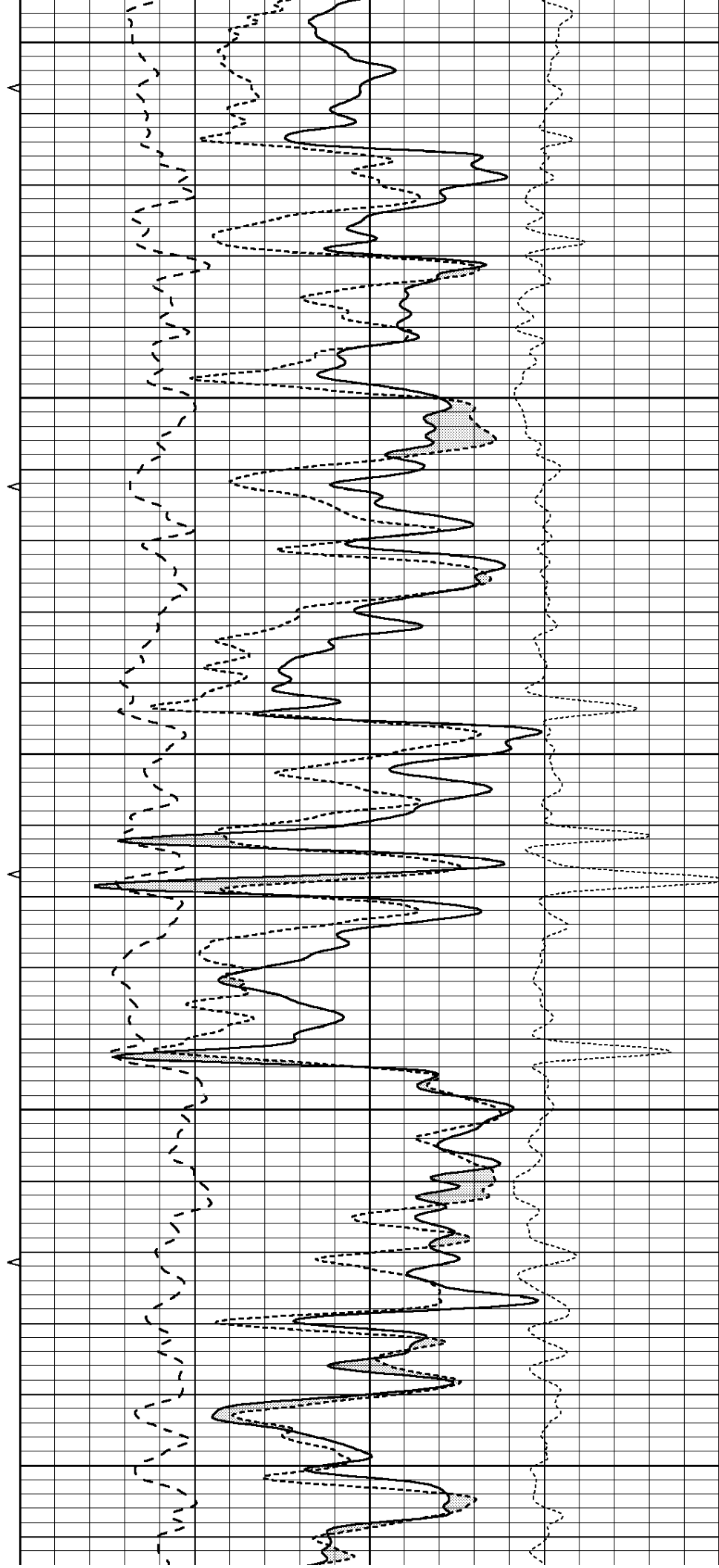
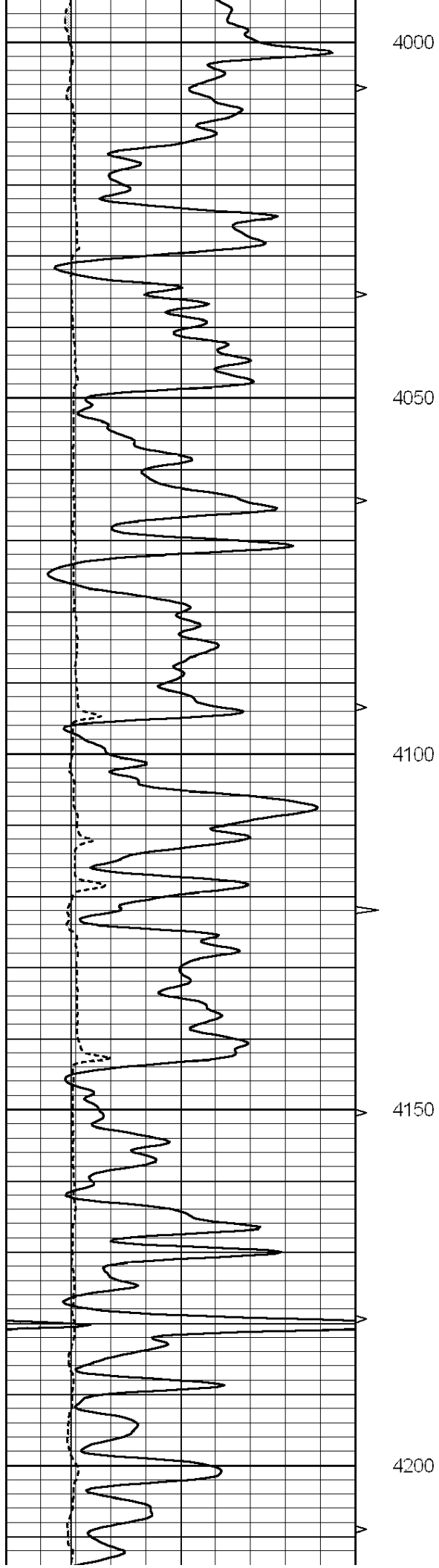
All interpretations are opinions based on inferences from electrical or other measurements and we cannot and do not guarantee the accuracy or correctness of any interpretation, and we shall not, except in the case of gross or willful negligence on our part, be liable or responsible for any loss, costs, damages, or expenses incurred or sustained by anyone resulting from any interpretation made by any of our officers, agents or employees. These interpretations are also subject to our general terms and conditions set out in our current Price Schedule.

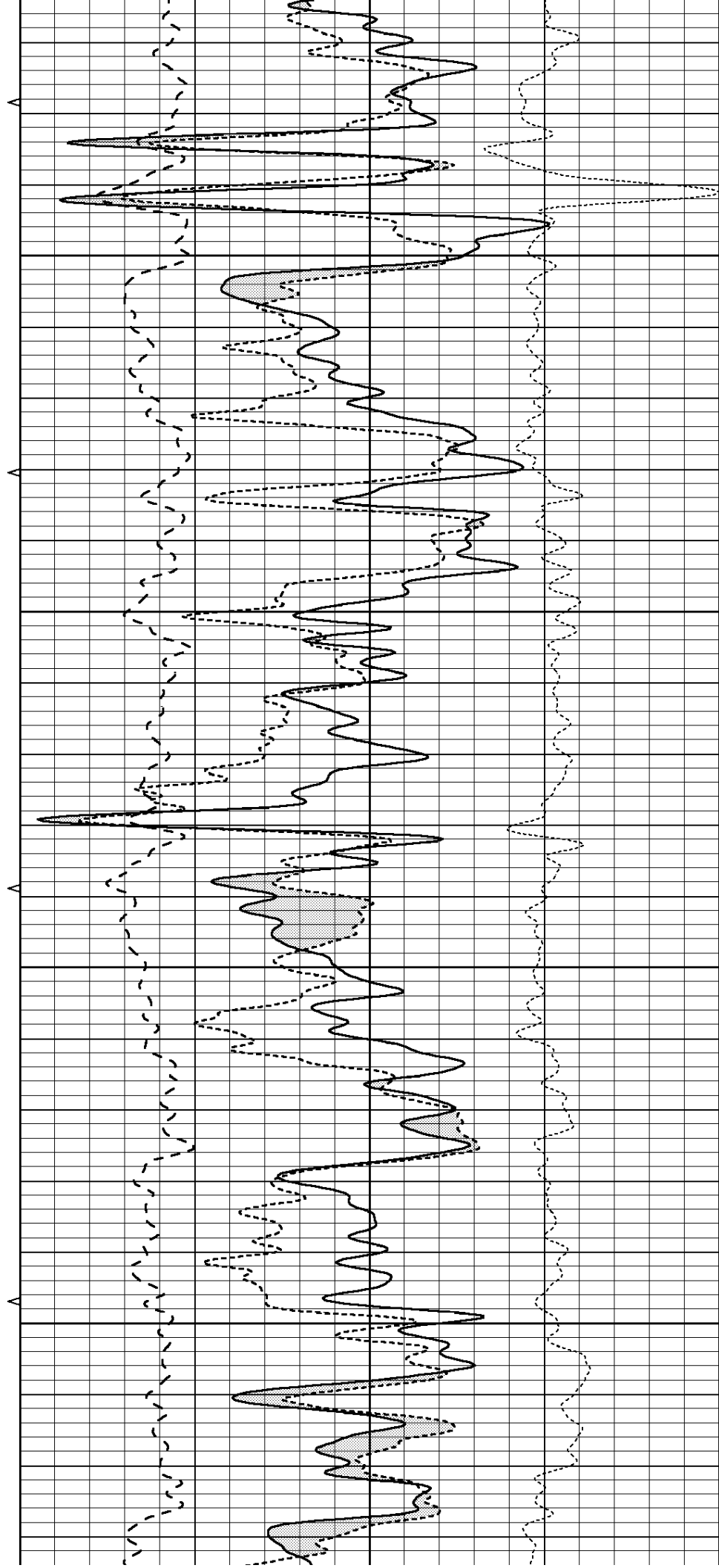
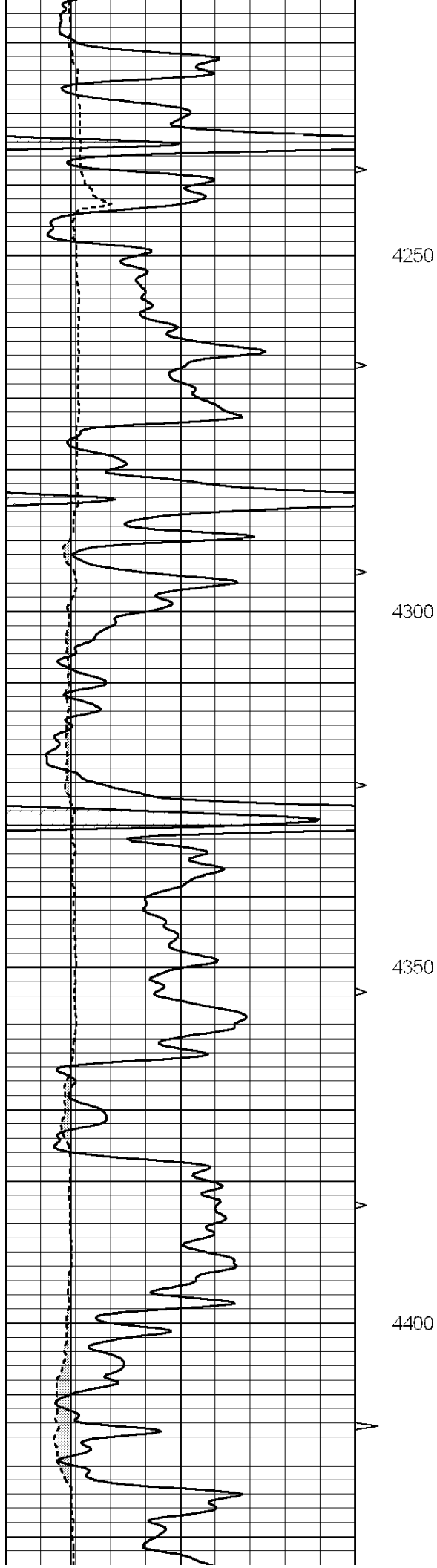
Comments

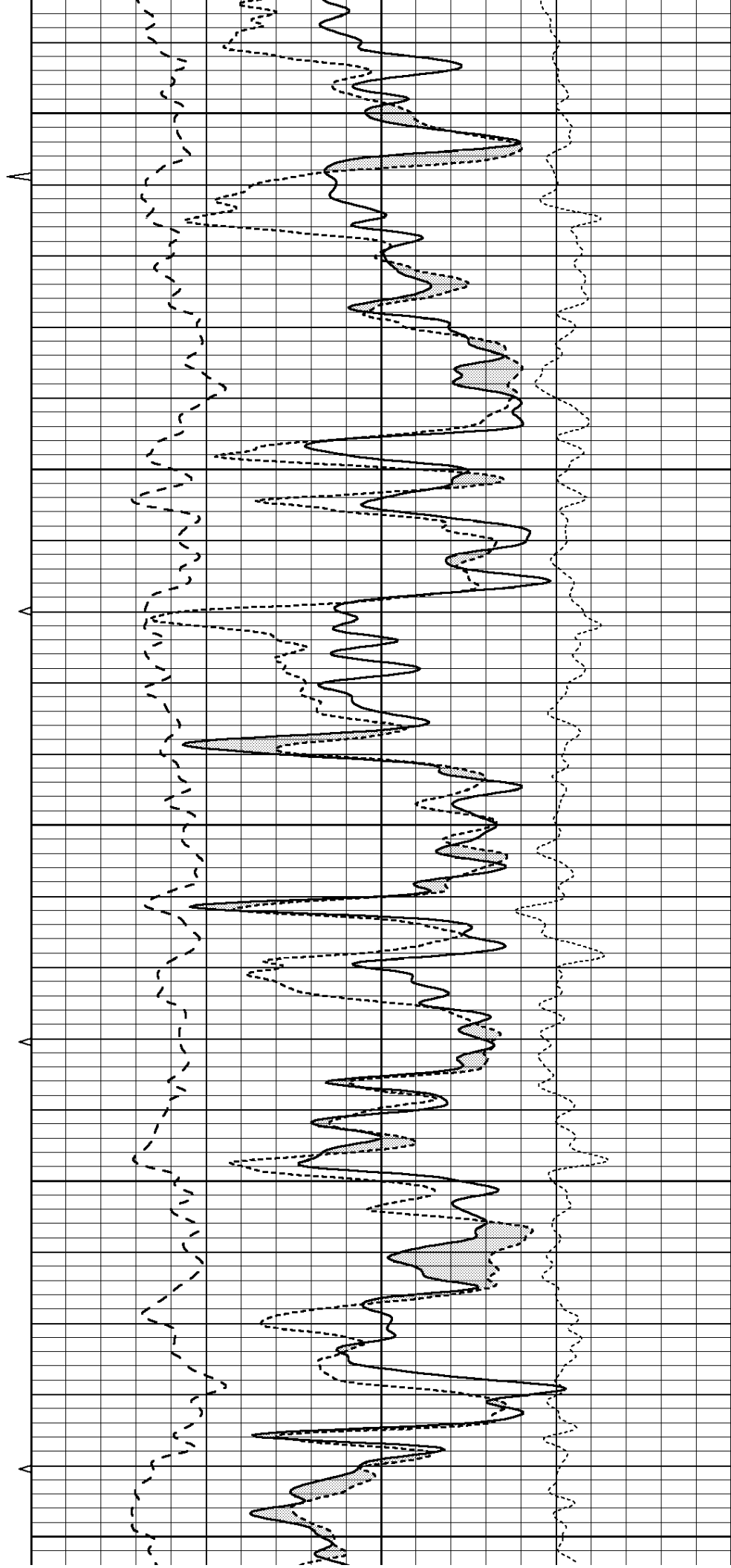
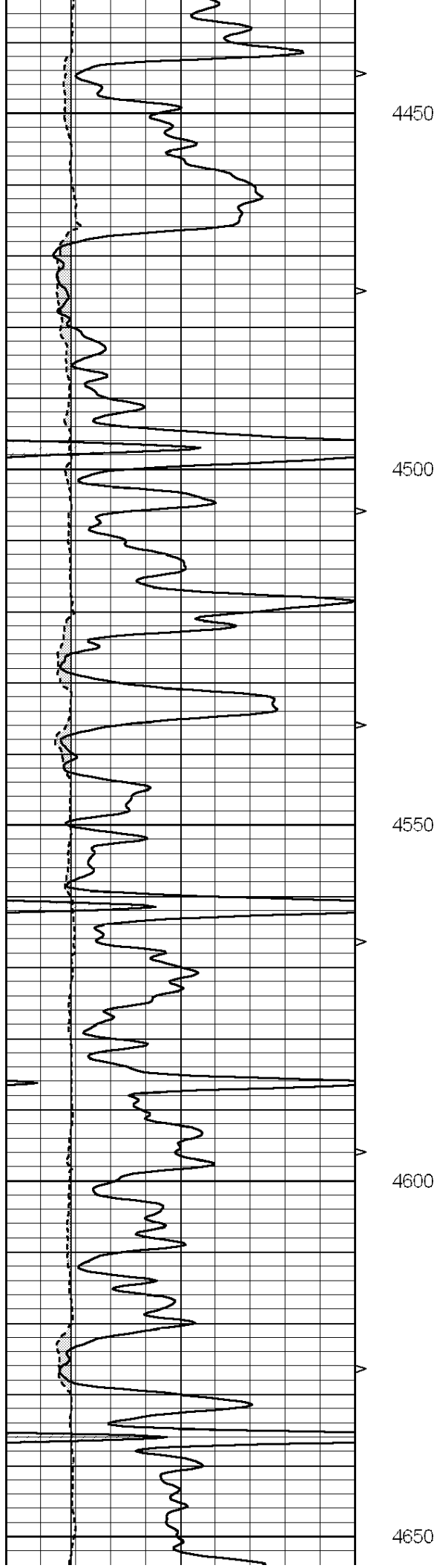
THANK YOU FOR USING SUPERIOR WELL SERVICE (785) 628-6395
DIRECTIONS
CHEYENNE, CO - 1 1/2 MILES WEST TO CR 42 - 1/2 MILE NORTH - WEST INTO

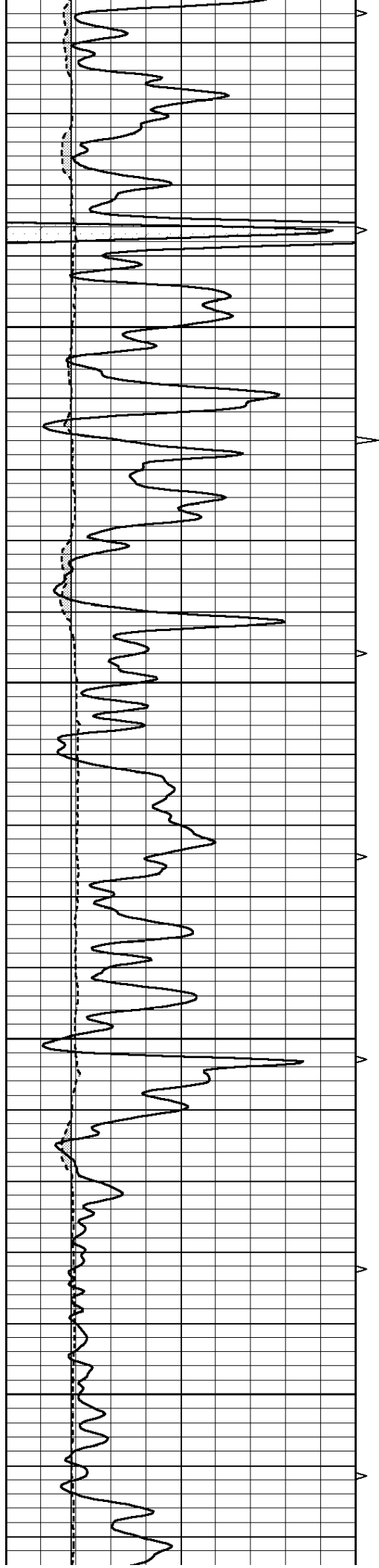
Charted by:		Depth in Feet scaled 1:2.15				
0	GAMMA RAY (GAPI)	150	ABHV	30	COMPENSATED DENSITY (pu)	-10
6	CALIPER (in)	16	10 (ft3) 0	30	COMPENSATED NEUTRON (pu)	-10
			TBHV	0	PE	10
			0 (ft3) 10	-0.25	CORRECTION (g/cc)	0.25









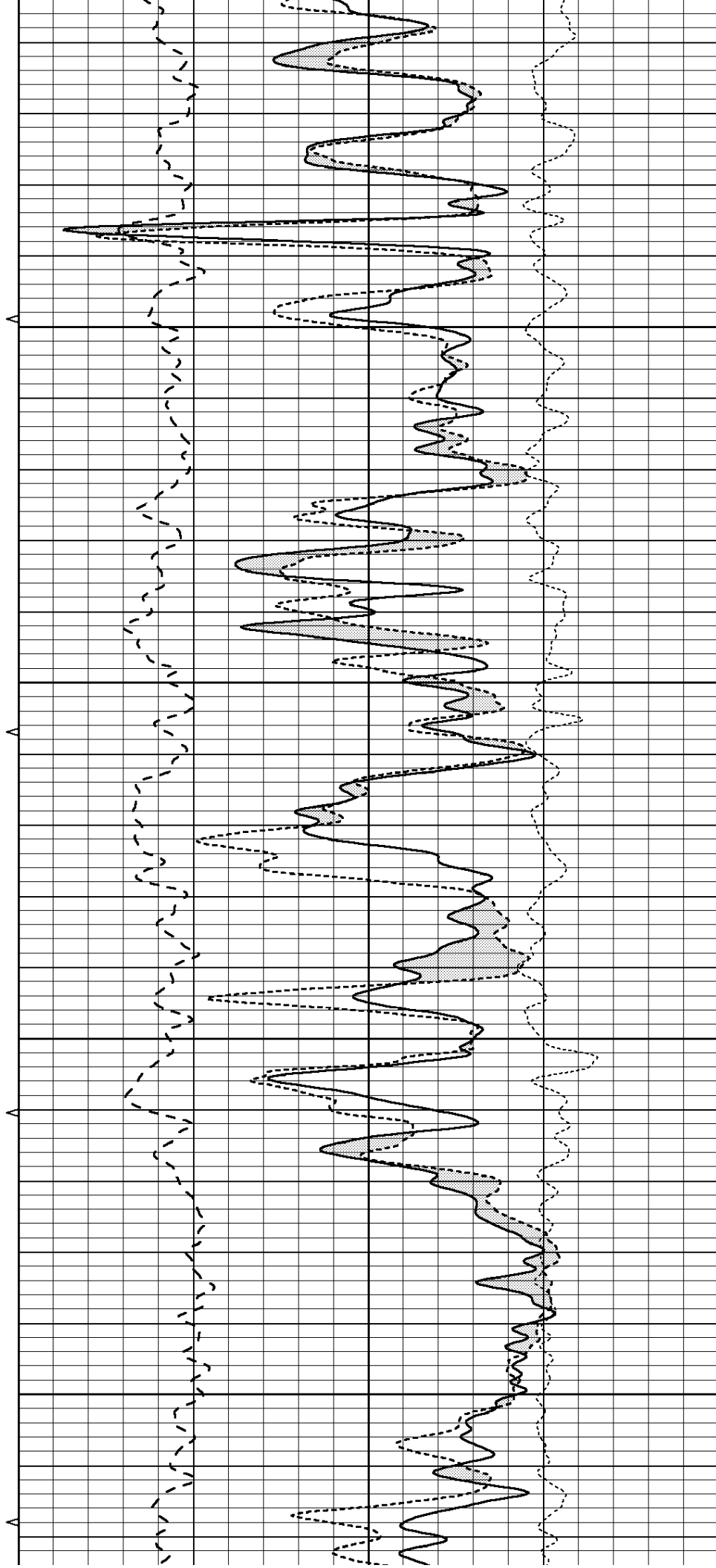


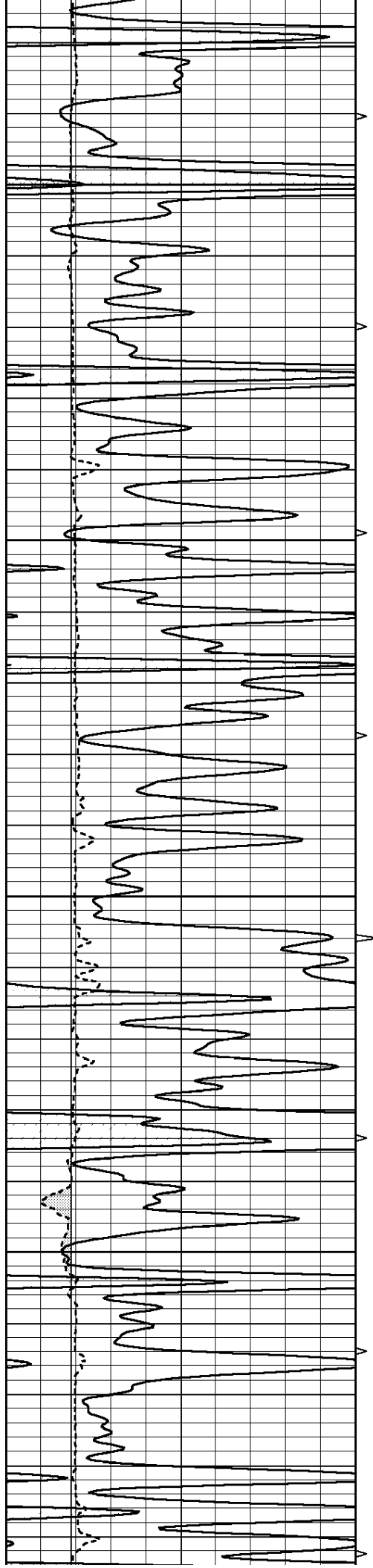
4700

4750

4800

4850



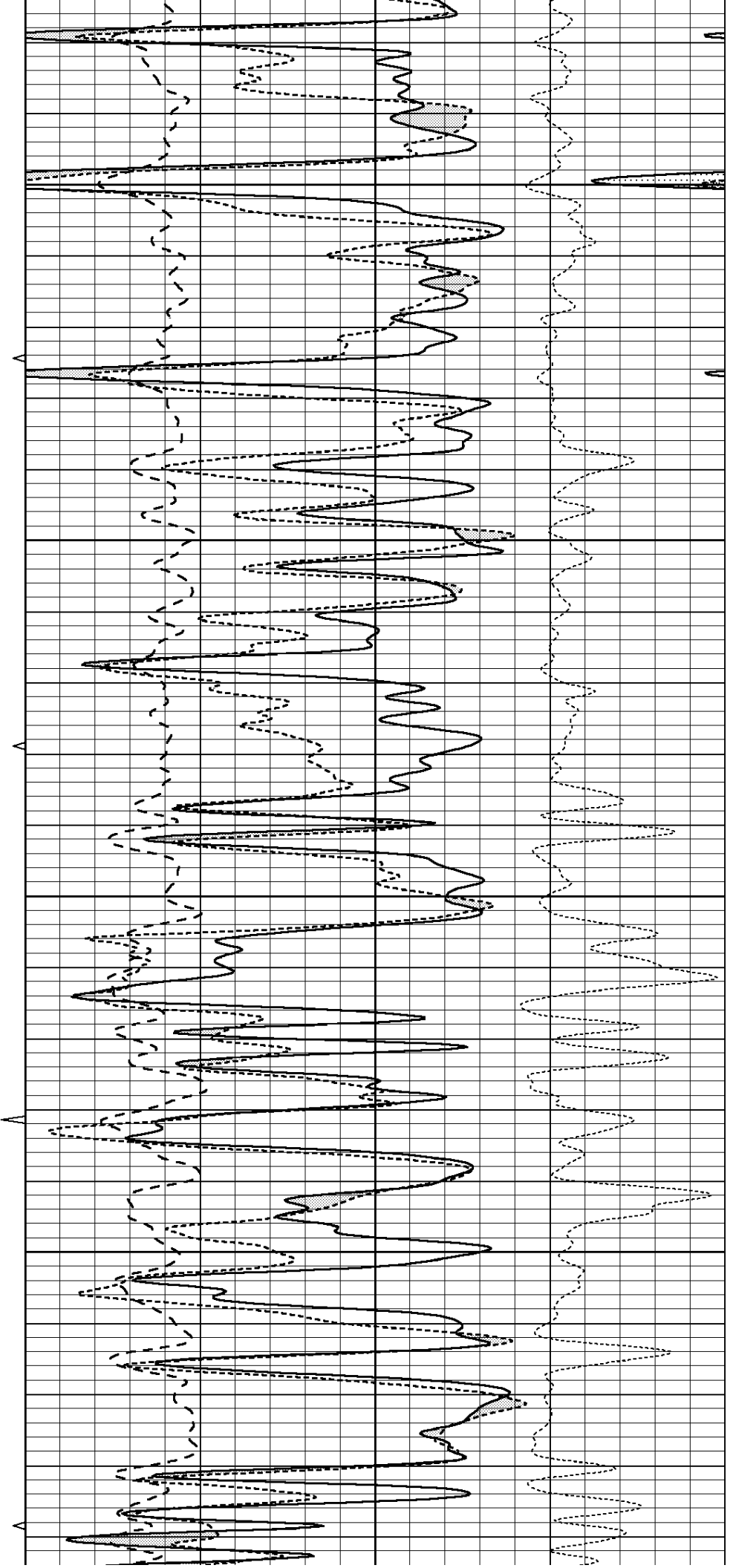


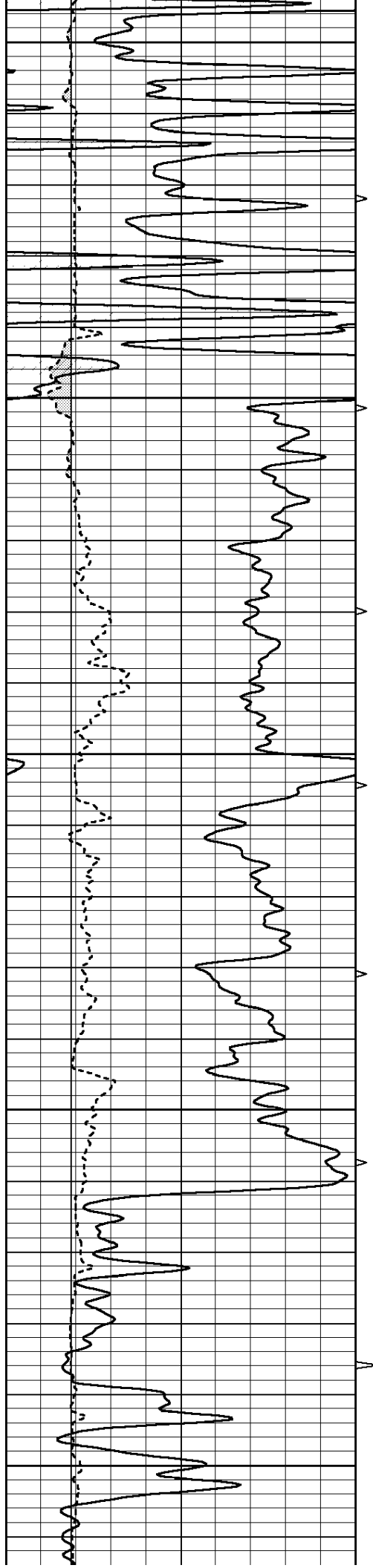
4900

4950

5000

5050





5100

5150

5200

5250

5300

