



SUPERIOR
Hays,
Kansas

DUAL
INDUCTION
LOG

Company		MULL DRILLING COMPANY, INC.	
Well		HOFFMAN-BUSBY #1-24	
Field			
County		CHEYENNE	State
State		COLORADO	
Location:		API # : 05-061-07720-00-00 1500' FNL & 660' FEL SE/4 - NE/4	
Permanent Datum		GROUND LEVEL	
Log Measured From		KELLY BUSHING 11' A.G.L.	
Drilling Measured From		KELLY BUSHING	
SEC 24 TWP 14S RGE 45W		Elevation K.B. 4307 D.F. 4305 G.L. 4296	
Date	9/21/12		
Run Number	ONE		
Depth Driller	5600		
Depth Logger	5598		
Bottom Logged Interval	5596		
Top Log Interval	0		
Casing Driller	13 3/8" @ 474		
Casing Logger			
Bit Size	7 7/8		
Type Fluid in Hole	CHEMICAL MUD	CHLORIDES 2,700 PPM	
Density / Viscosity	9.3/57		
pH / Fluid Loss	10.0/6.4		
Source of Sample	FLOWLINE		
Rim @ Meas. Temp	1.00 @ 106F		
Rmf @ Meas. Temp	0.75 @ 106F		
Rmc @ Meas. Temp	1.20 @ 106F		
Source of Rmf / Rmc	MEASURED		
Rim @ BHT	0.82 @ 130F		
Time Circulation Stopped	2 HOURS		
Time Logger on Bottom			
Maximum Recorded Temperature	130F		
Equipment Number	680		
Location	HAYS, KS.		
Recorded By	JEFF GRONEMEG		
Witnessed By	PHIL ASKEY		

<<< Fold Here >>>

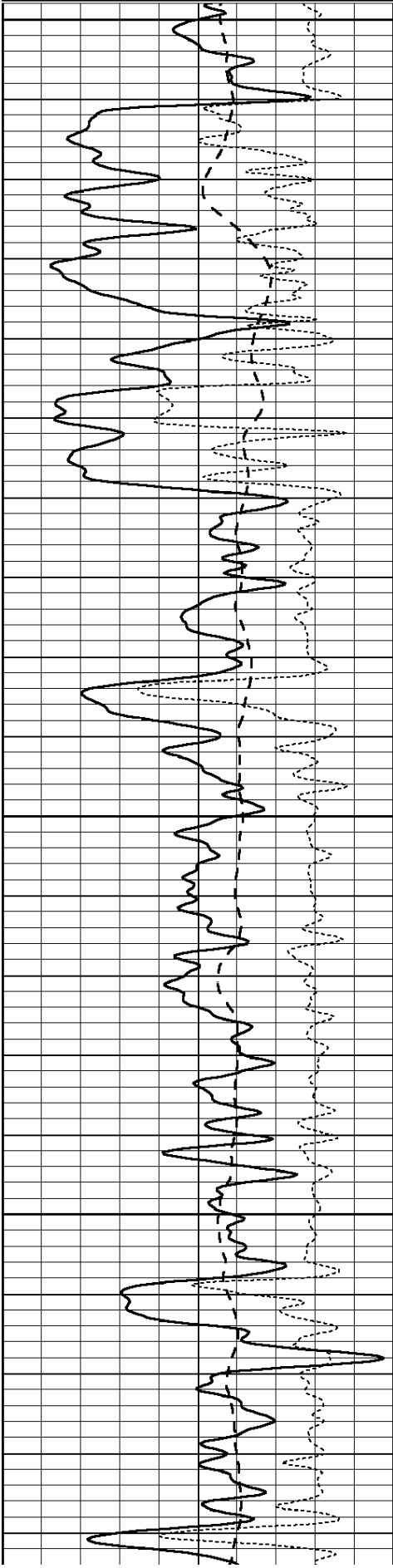
All interpretations are opinions based on inferences from electrical or other measurements and we cannot and do not guarantee the accuracy or correctness of any interpretation, and we shall not, except in the case of gross or willful negligence on our part, be liable or responsible for any loss, costs, damages, or expenses incurred or sustained by anyone resulting from any interpretation made by any of our officers, agents or employees. These interpretations are also subject to our general terms and conditions set out in our current Price Schedule.

Comments

THANK YOU FOR USING SUPERIOR WELL SERVICE (785) 628-6395
DIRECTIONS
CHEYENNE, CO - 1 1/2 MILES WEST TO CR 42 - 1/2 MILE NORTH - WEST INTO

0	GAMMA RAY (GAPI)	150
-100	SP (mV)	100
-250	Rxo/Rt	50

0.2	SHALLOW GUARD (Ohm-m)	2000
0.2	MEDIUM INDUCTION (Ohm-m)	2000
0.2	DEEP INDUCTION (Ohm-m)	2000

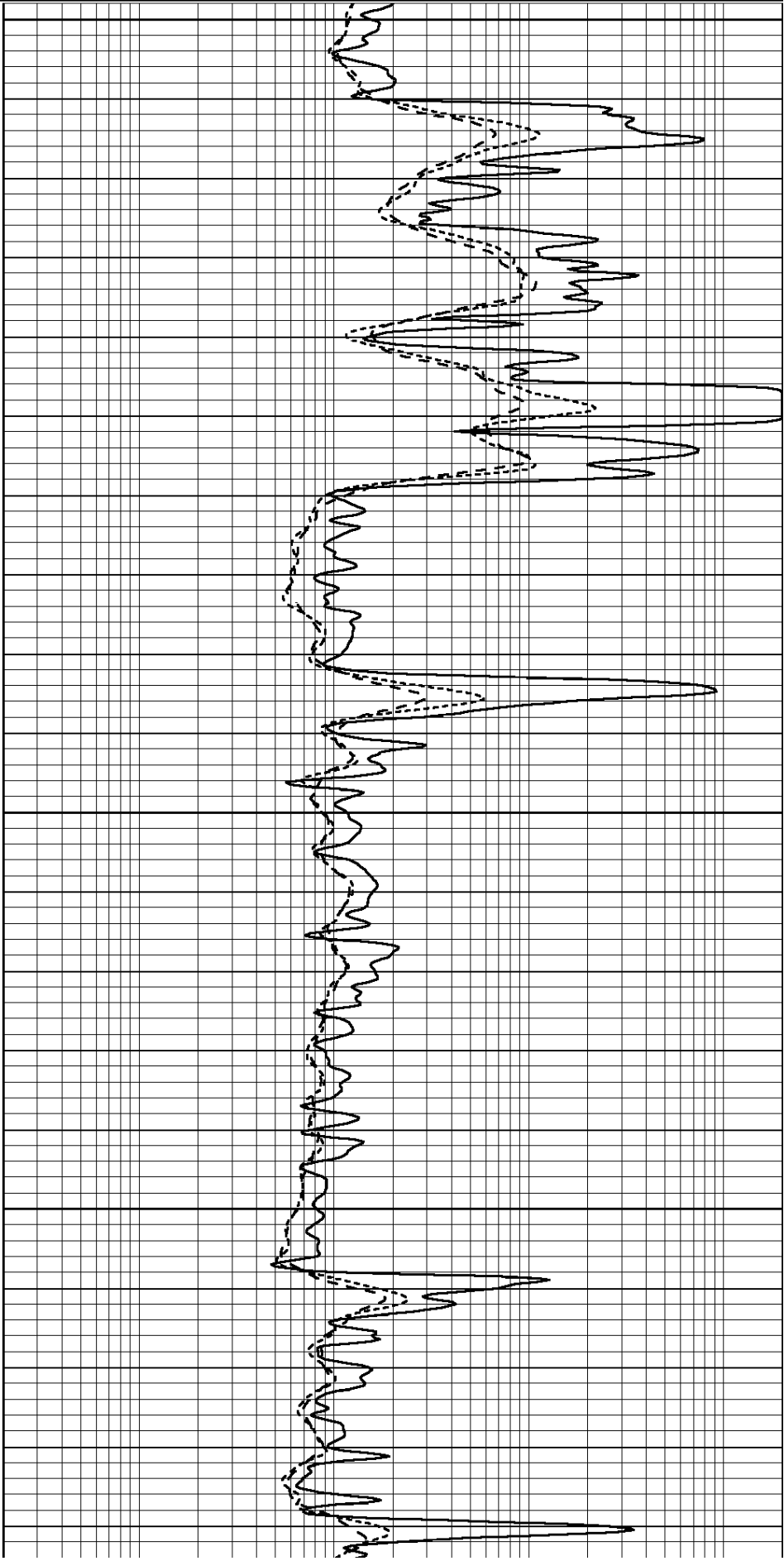


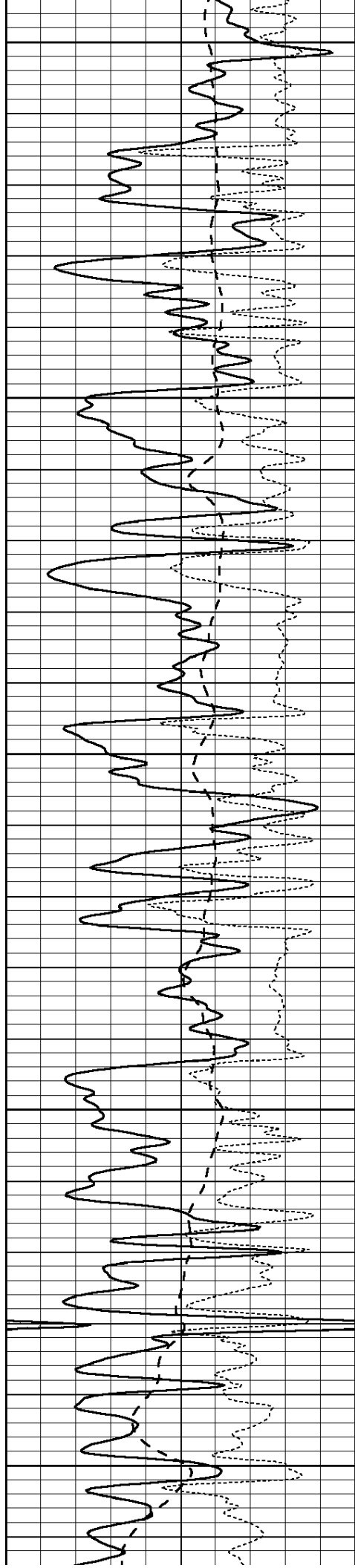
3800

3850

3900

3950





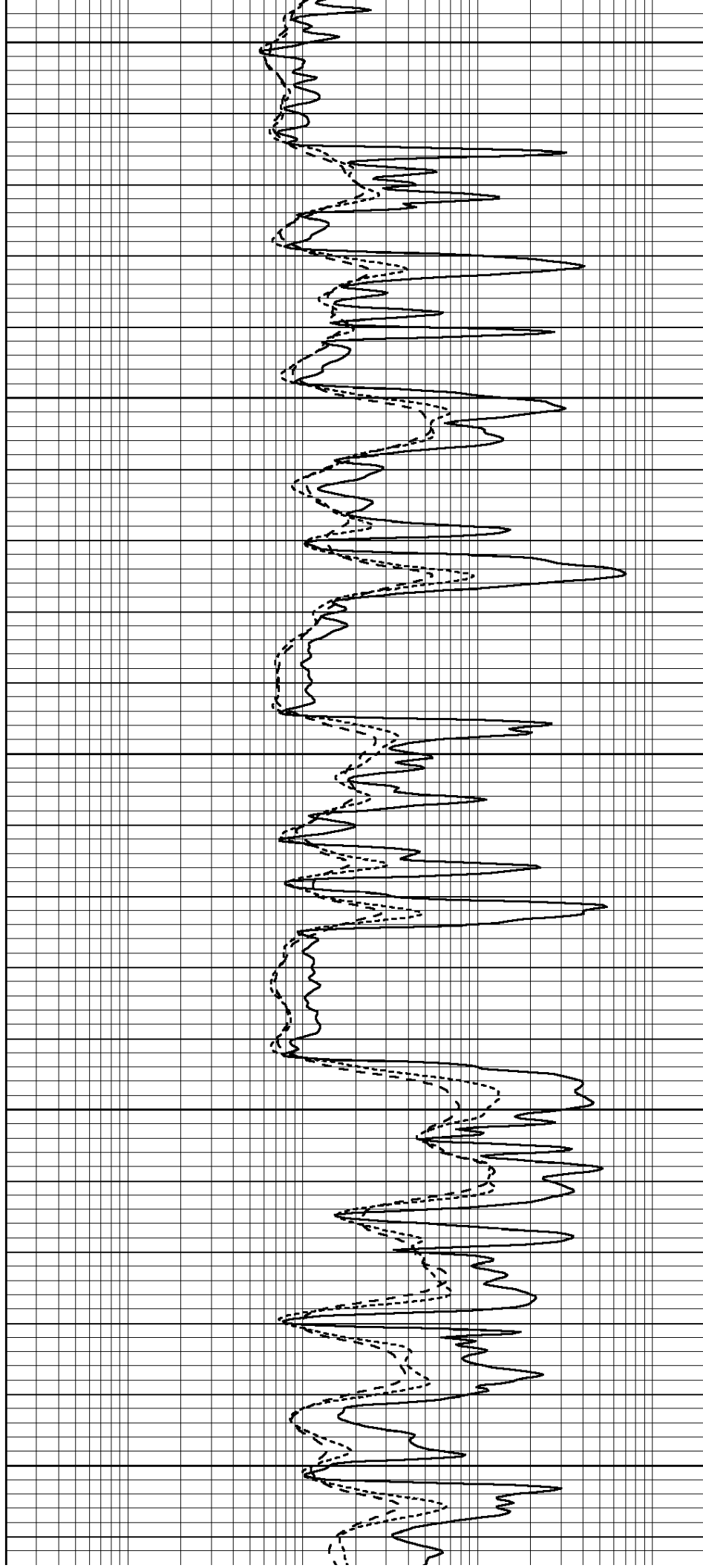
4000

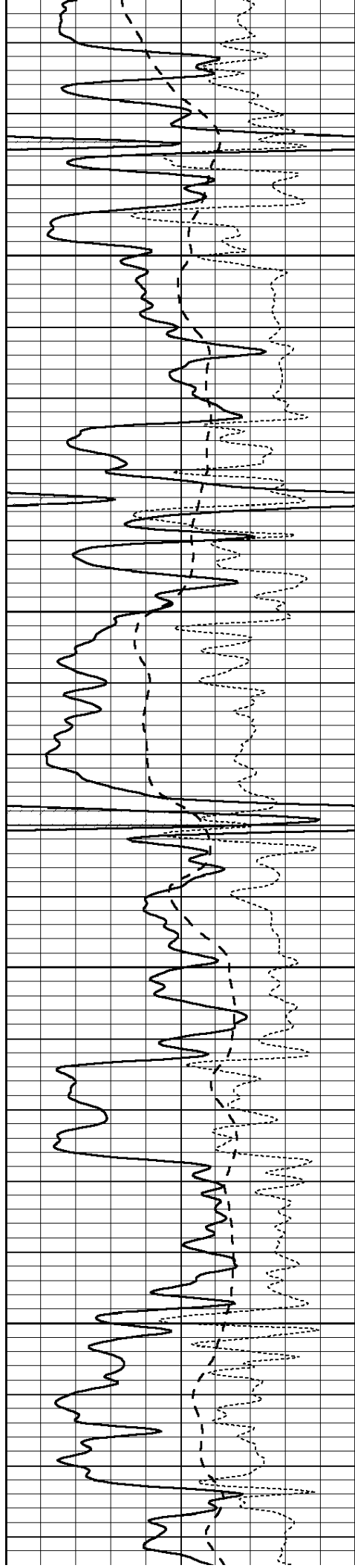
4050

4100

4150

4200



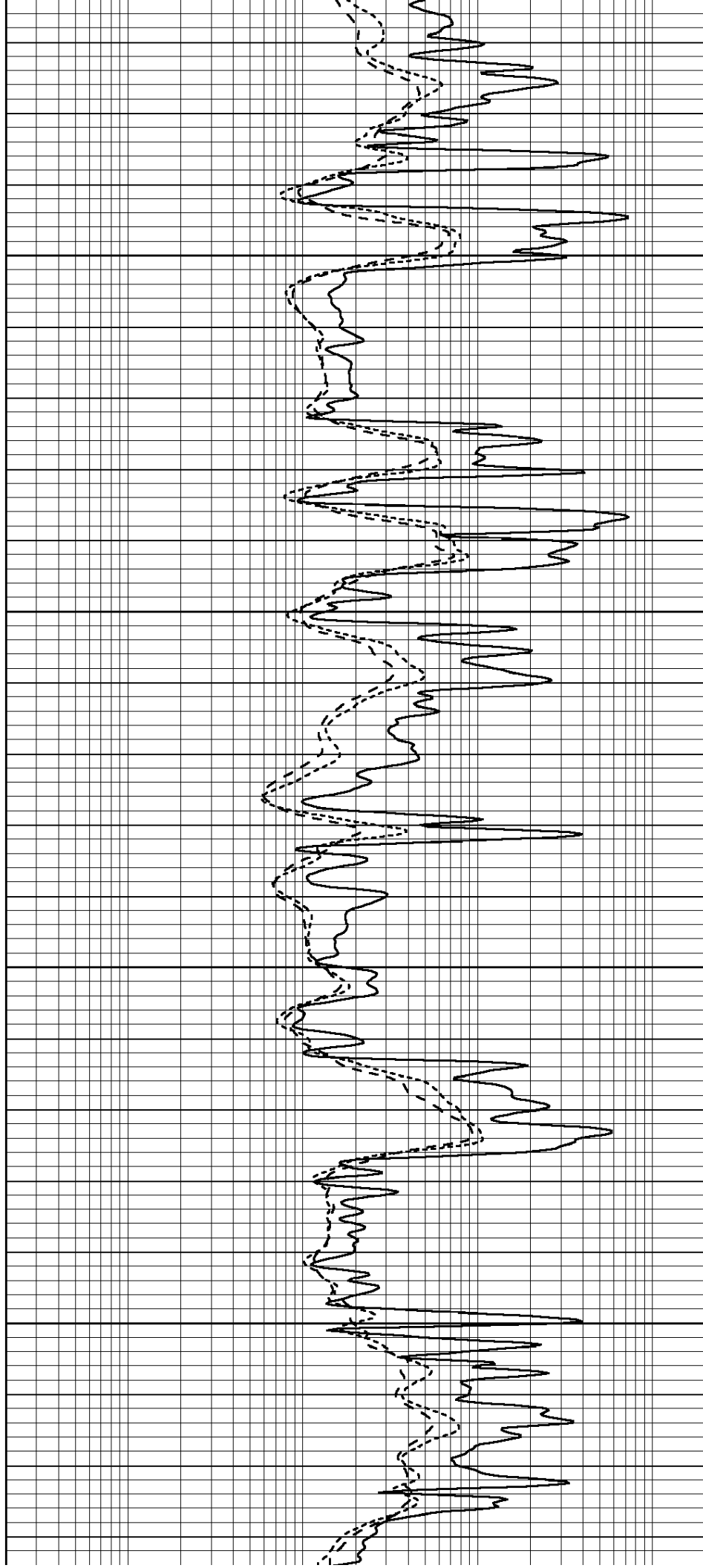


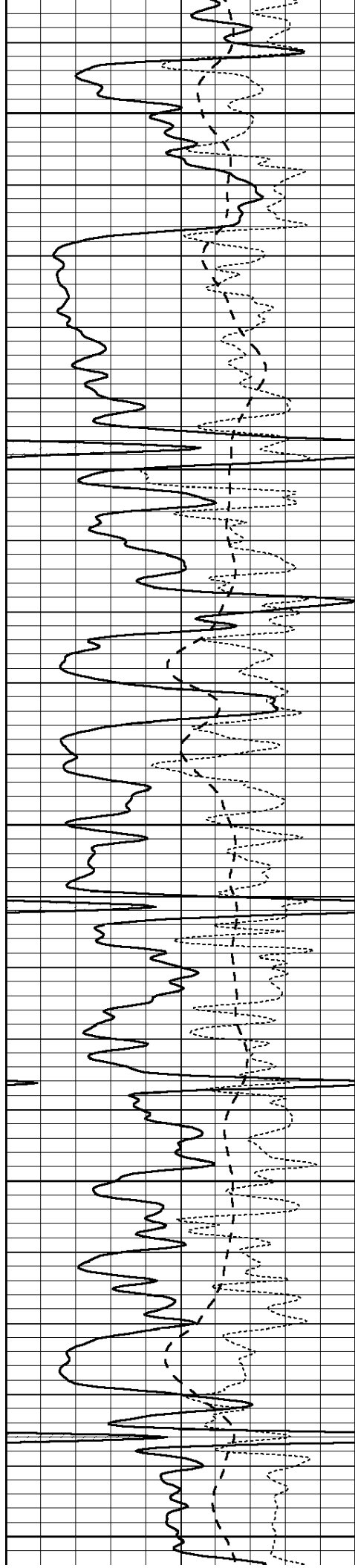
4250

4300

4350

4400





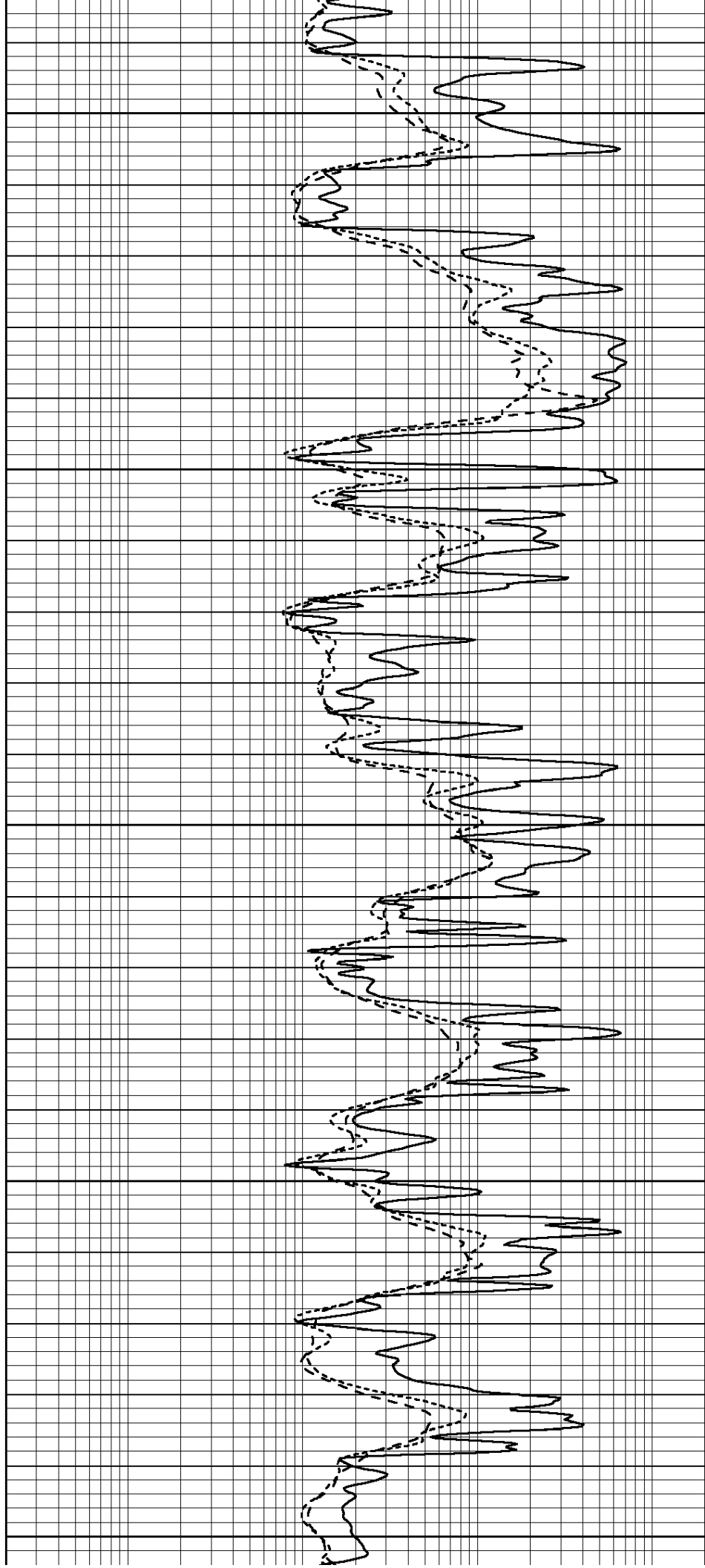
4450

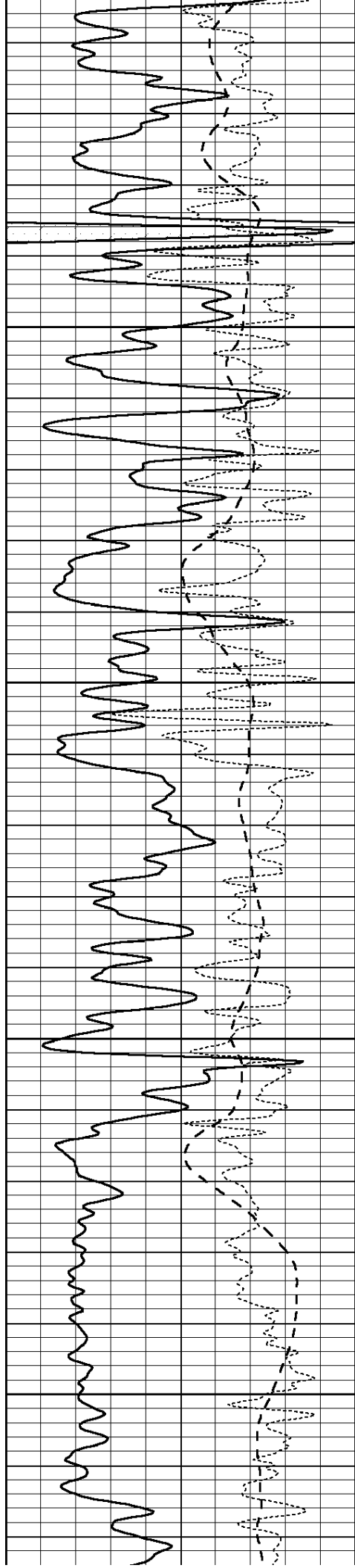
4500

4550

4600

4650



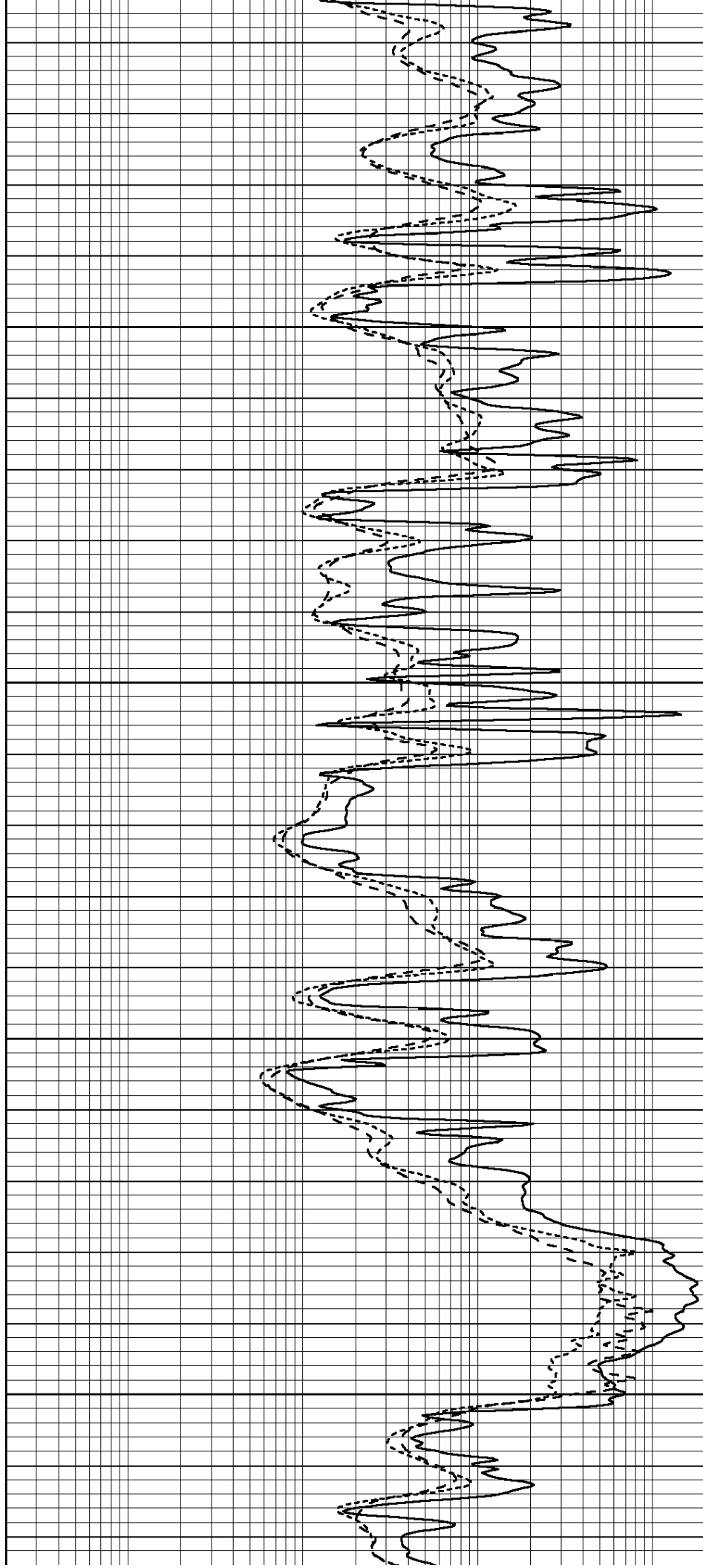


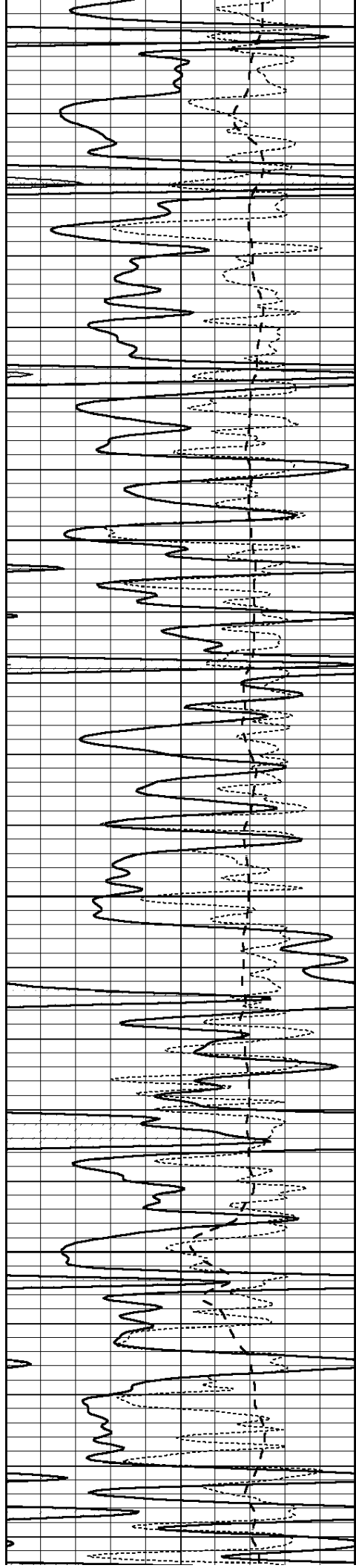
4700

4750

4800

4850



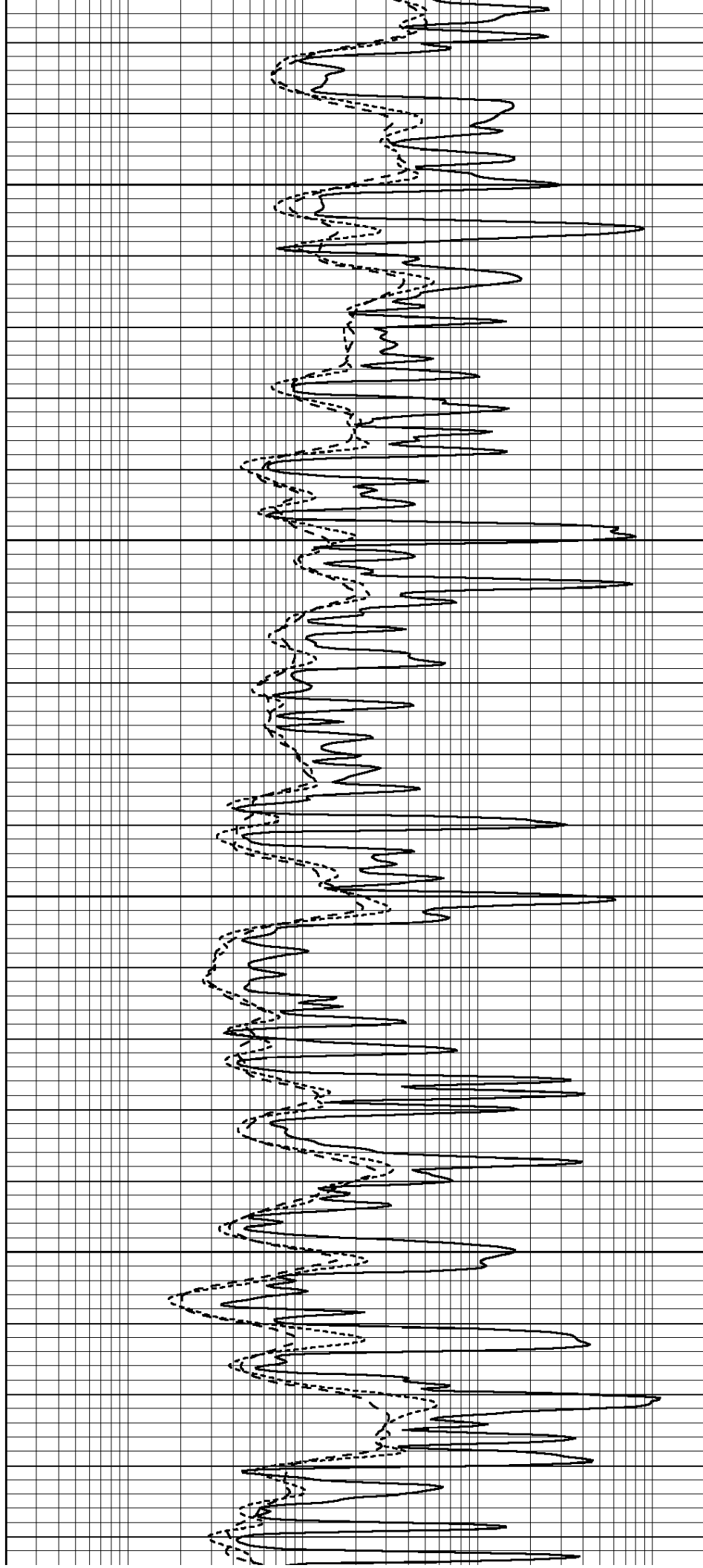


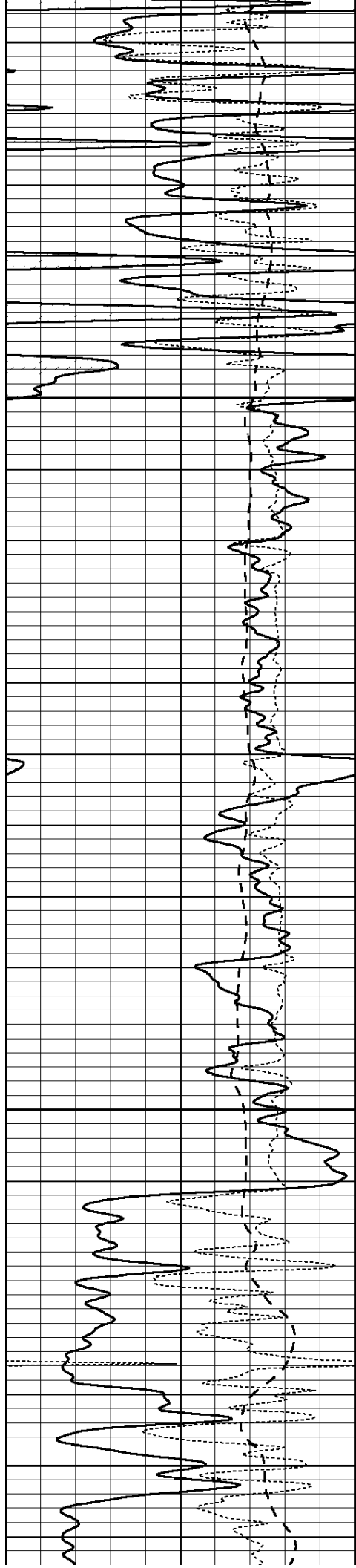
4900

4950

5000

5050





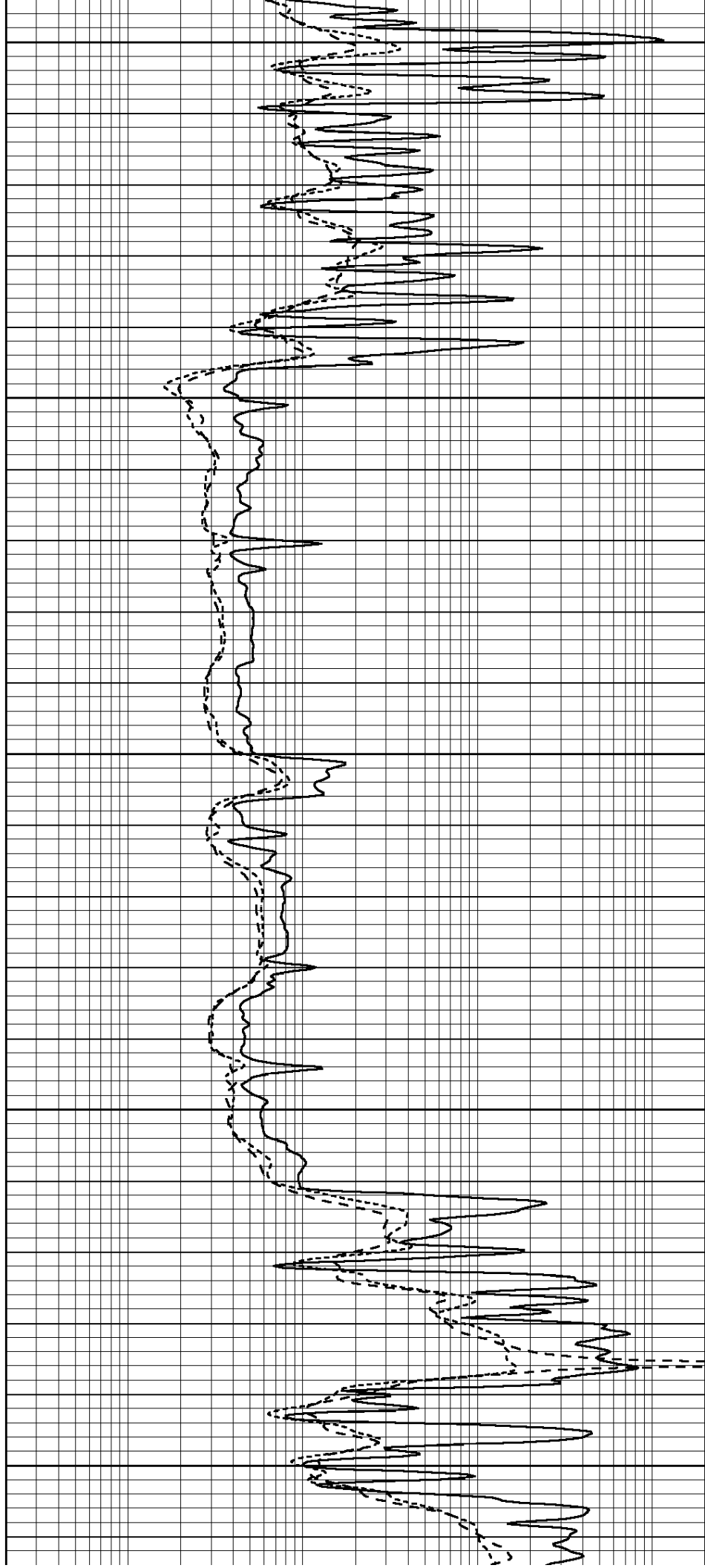
5100

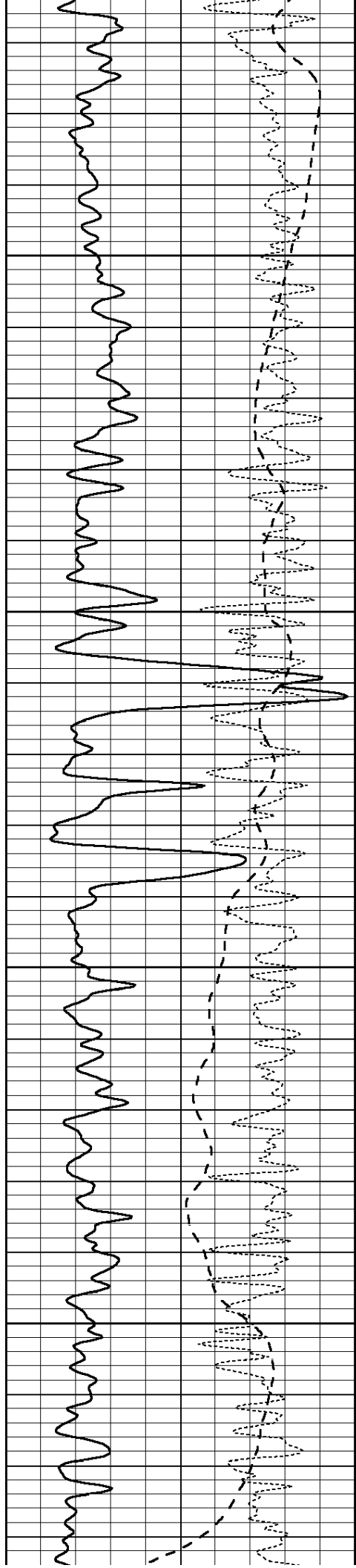
5150

5200

5250

5300



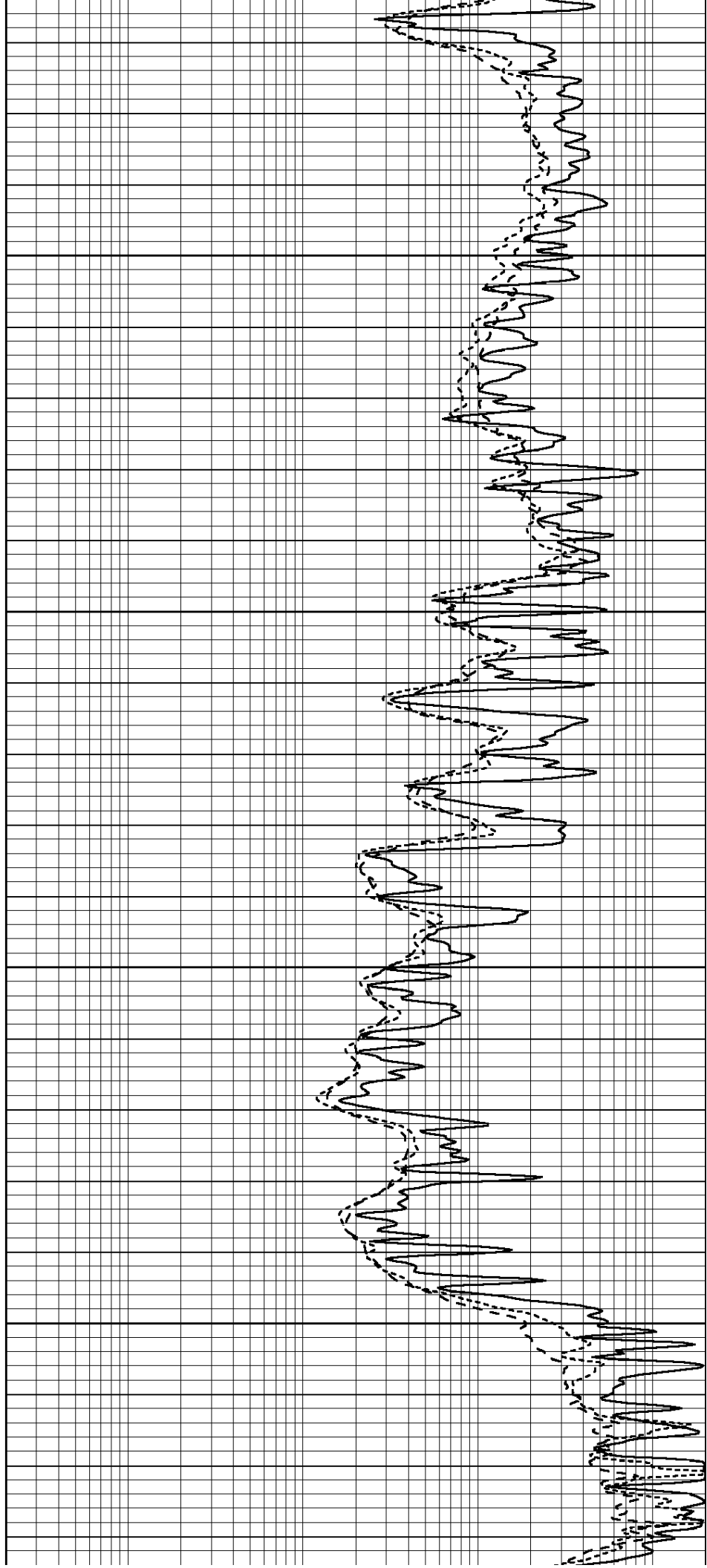


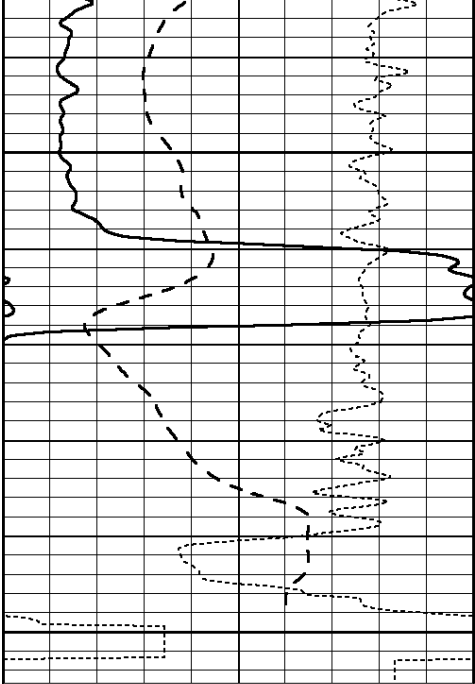
5350

5400

5450

5500

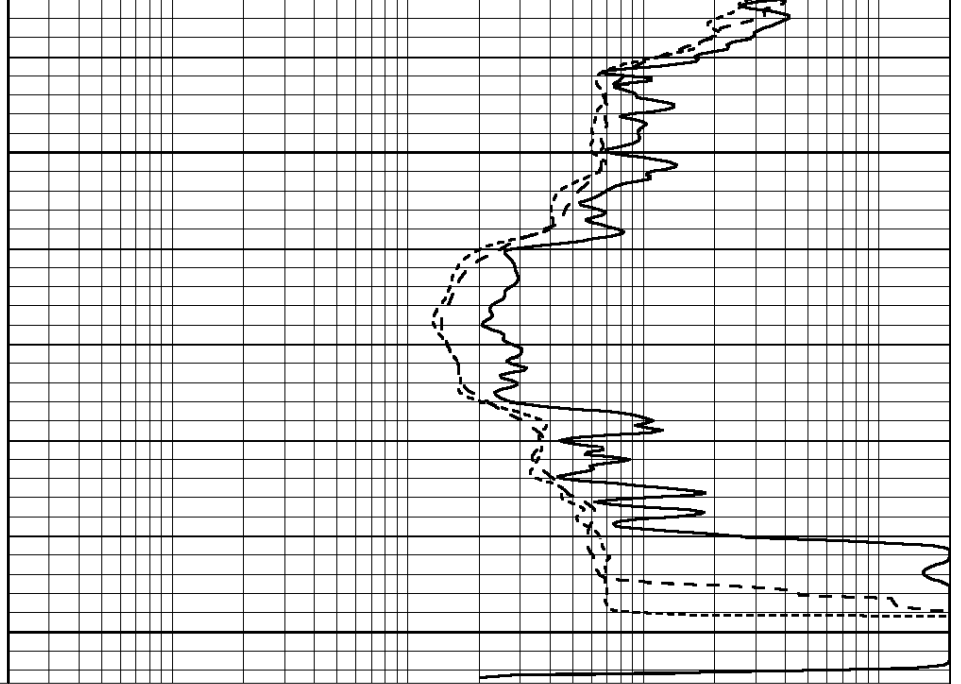




0	GAMMA RAY (GAPI)	150
-100	SP (mV)	100
-250	Rxo/Rt	50

5550

5600



0.2	SHALLOW GUARD (Ohm-m)	2000
0.2	MEDIUM INDUCTION (Ohm-m)	2000
0.2	DEEP INDUCTION (Ohm-m)	2000