



Northeasterly view of multi-well pad from the southwest corner edge of cut slope.



Northeasterly view



Viewing northeasterly: Six trench plates covering cellars & possibly conductor pipes.



Easterly view along the southern rim of cut .





Viewing East along southern rim of well pad. Closure of road in process: Regrading, seeding, and fencing observed along this segment (to the right); and an interim access point created for further reclamation work, (center).



Viewing upgradient and west towards Logan Wash road: ~3/4 mile away.

## PDC Location ID# 335016



COGCC MAPGUIDE: AUGUST 2011 AERIAL PHOTO: Well pad, and lease access road.



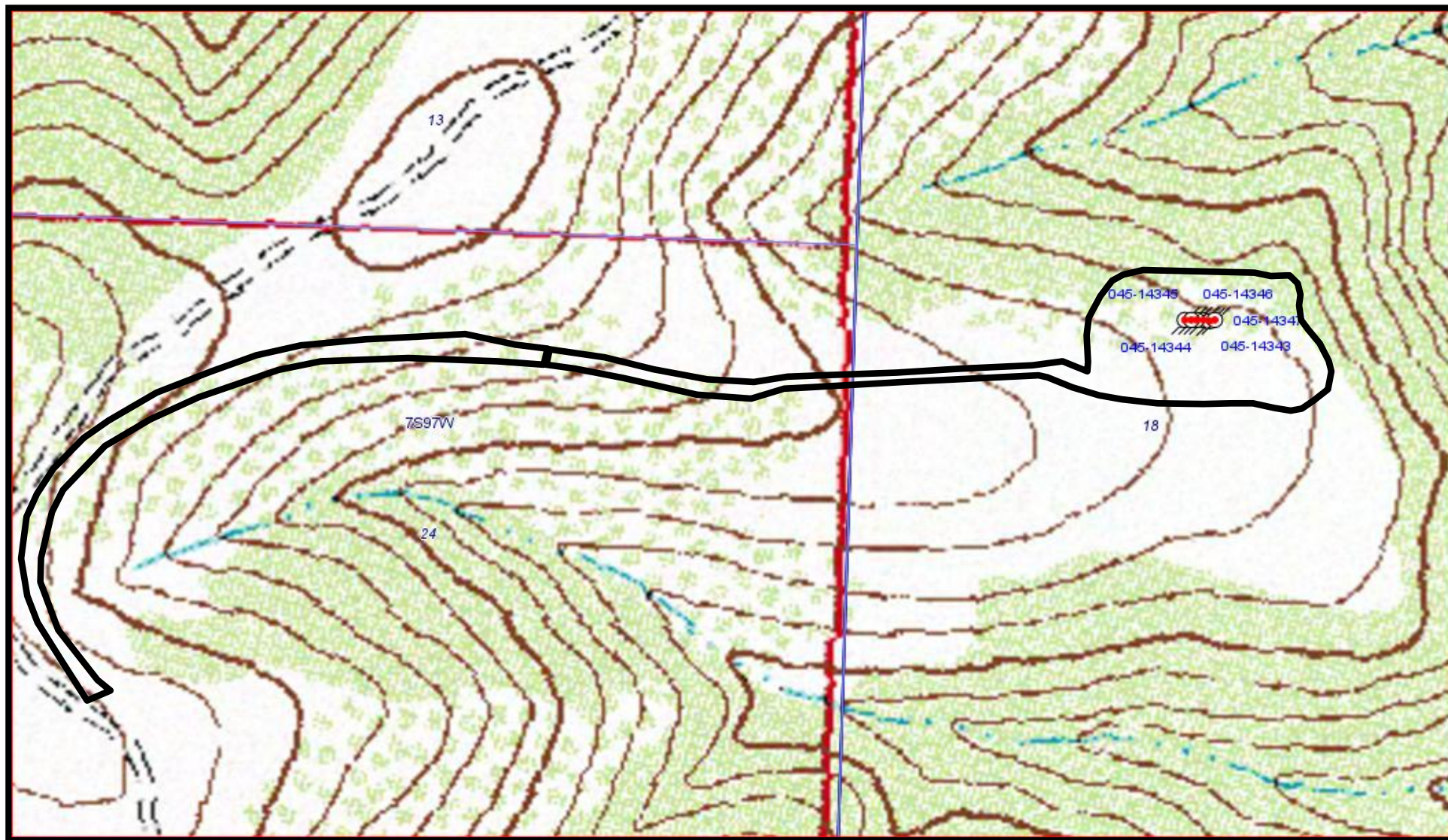
## PDC Location ID# 335016



Google Earth Aerial Image, August 2011: View of former landscape along southern segment of access road & entrance way. This road section was observed (Oct 9, 2012) to have undergone partial regrading & closure. It also appears that an excavated pit may have been backfilled/closed, (southeast section of pad).



## PDC Location ID# 335016



USGS 7 1/2 minute quadrangle: Sketch of lease access route and well pad; showing general topographic and drainage features in area.