

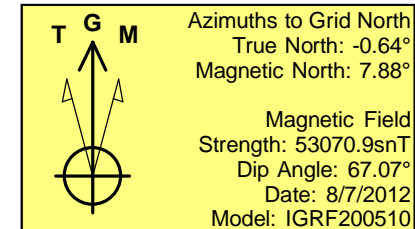
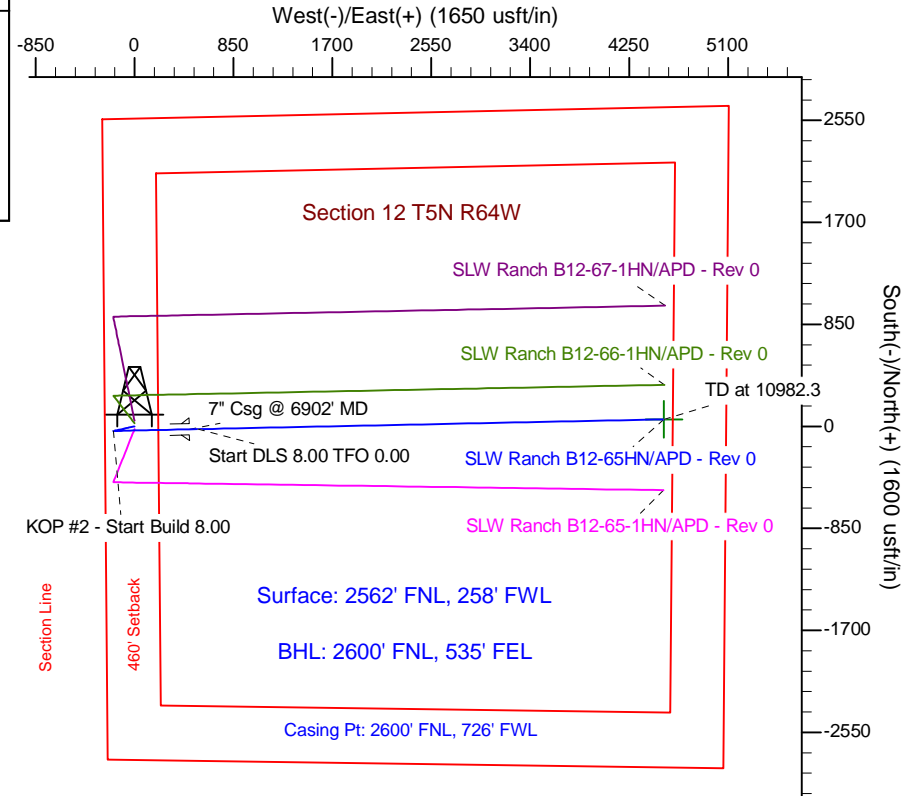
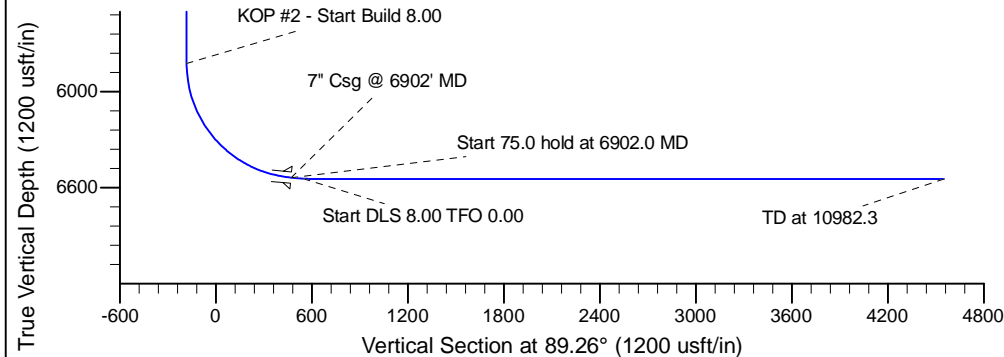
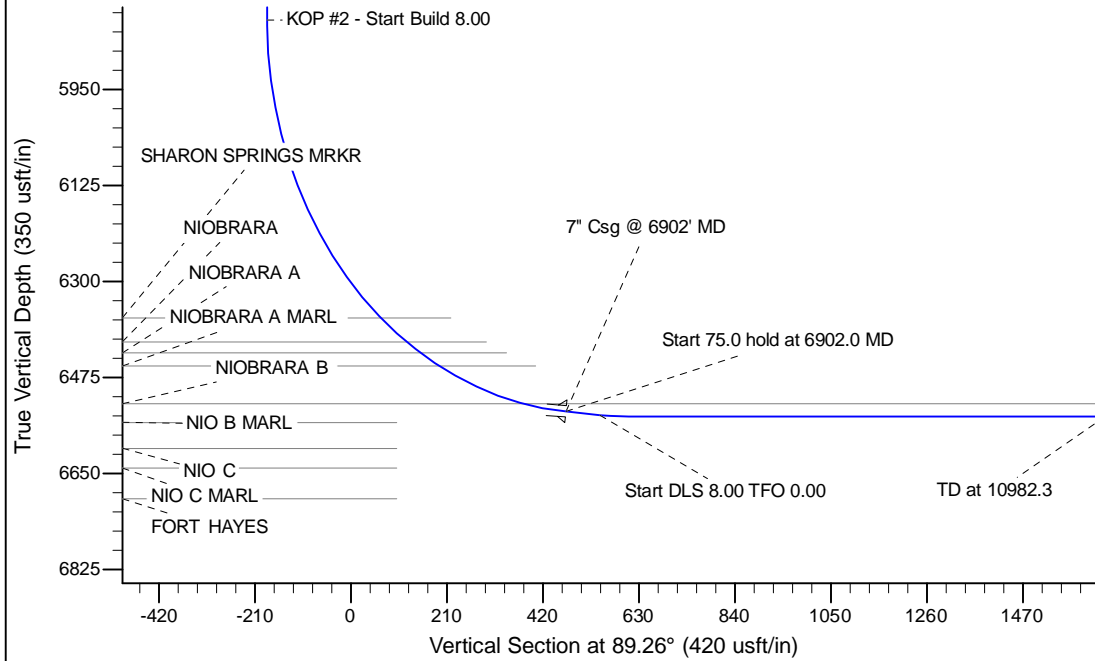
Project: Wattenberg Field
Site: B (Sec.12-T05N-R64W) Weld County, CO
Well: SLW Ranch B12-65HN
Wellbore: Original Drilling
Design: APD - Rev 0

Northern Region Drilling

Geodetic System: US State Plane 1983
Datum: North American Datum 1983
Ellipsoid: GRS 1980
Zone: Colorado Northern Zone
System Datum: Mean Sea Level

SECTION DETAILS

Sec	MD	Inc	Azi	TVD	+N/-S	+E/-W	Dleg	TFace	VSeet	Target
1	0.0	0.00	0.00	0.0	0.0	0.0	0.00	0.00	0.0	
2	2200.0	0.00	0.00	2200.0	0.0	0.0	0.00	0.00	0.0	
3	2681.2	12.03	258.27	2677.7	-10.2	-49.3	2.50	258.27	-49.4	
4	3094.9	12.03	258.27	3082.3	-27.8	-133.7	0.00	0.00	-134.1	
5	3576.1	0.00	0.00	3560.0	-38.0	-183.0	2.50	180.00	-183.5	
6	5839.5	0.00	0.00	5823.4	-38.0	-183.0	0.00	0.00	-183.5	
7	6902.0	85.00	88.83	6536.9	-24.7	470.6	8.00	88.83	470.3	
8	6977.0	85.00	88.83	6543.4	-23.1	545.3	0.00	0.00	545.0	
9	7039.6	90.00	88.83	6546.1	-21.8	607.8	8.00	0.00	607.4	
10	10982.3	90.00	88.83	6546.0	58.7	4549.7	0.00	0.00	4550.1	SLW Ranch B12-65HN BHL 2600'FNL, 535'FEL



WELL DETAILS: SLW Ranch B12-65HN

Ground Level:	4603.0
Northing	1395255.47
Easting	3276444.46
Latitude	40.414130
Longitude	-104.507190

Plan: APD - Rev 0 (SLW Ranch B12-65HN/Original Drilling)

Created By: Carrie Willers	Date: 18:30, August 29 2012
Checked: _____	Date: _____
Reviewed: _____	Date: _____
Approved: _____	Date: _____