

Lat40°, Inc. 1635 Foxtrail Drive, Suite 325 Loveland, CO 970-776-3321

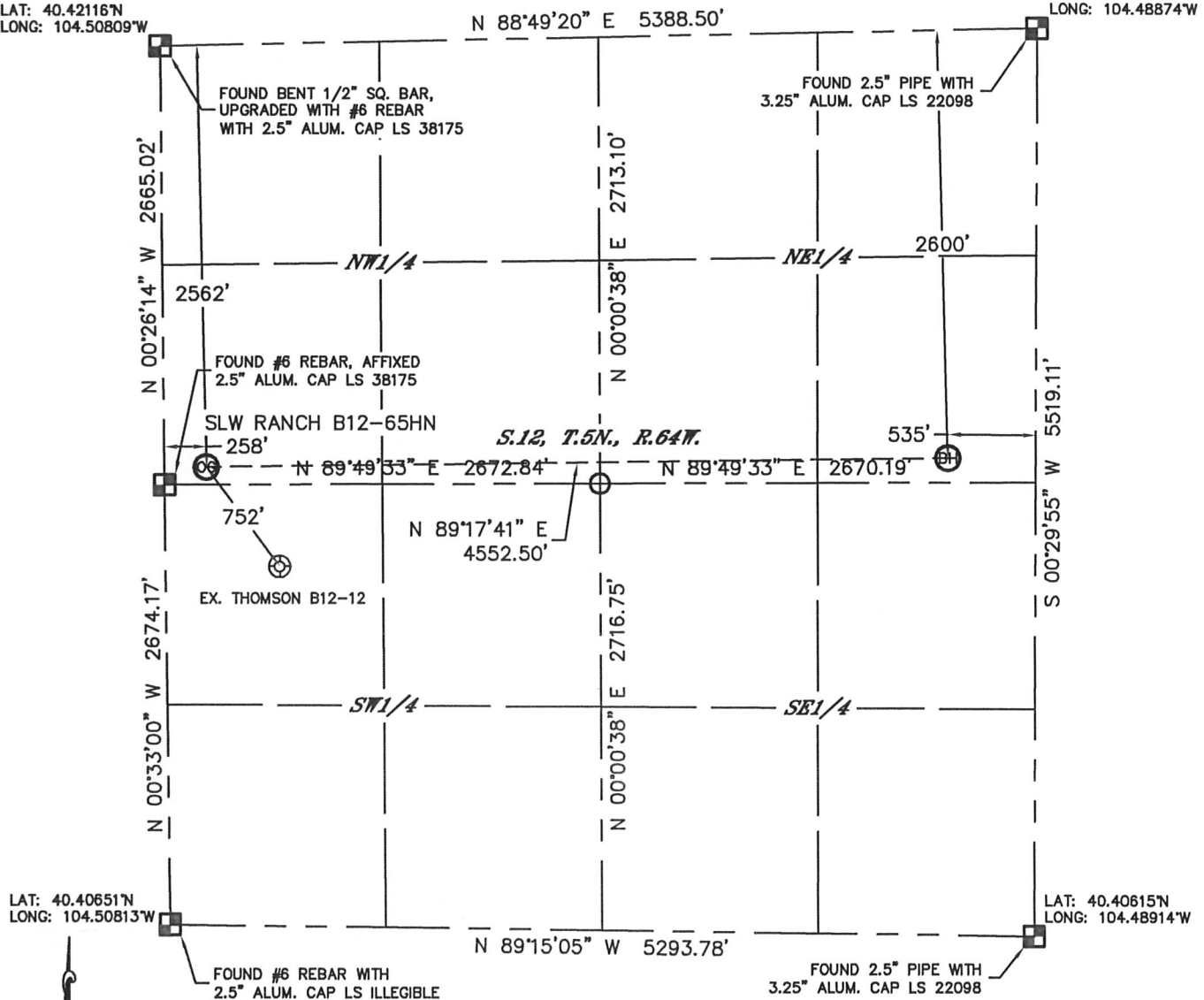
WELL LOCATION CERTIFICATE

THIS MAP DOES NOT REPRESENT A BOUNDARY SURVEY

SECTION: 12
TOWNSHIP: 5N
RANGE: 64W

LAT: 40.42116°N
LONG: 104.50809°W

LAT: 40.42130°N
LONG: 104.48874°W



In accordance with a request from Mike Rodine with Noble Energy Inc., Lat40°, Inc. has determined the surface location of the SLW RANCH B12-65HN to be 2562' from the NORTH line and 258' from the WEST line and the bottom hole to be 2600' from the NORTH line and 535' from the EAST line as measured at right angles from the section lines of Section 12, Township 5 North, Range 64 West of the Sixth Principal Meridian, County of Weld, State of Colorado.

I hereby state that this Well Location Certificate was prepared by me, or under my direct supervision, that the fieldwork was completed on 5/11/2012, for and on behalf of Noble Energy Inc.. That this is not a Land Survey Plat or an Improvement Survey Plat, and that it is not to be relied upon for establishment of fence, building, or other future Improvement lines.

NOTE:

- 1) Bearings shown are Grid Bearings of the Colorado State Plane Coordinate System, North Zone, North American Datum 1983/2007. The lineal dimensions as contained herein are based upon the "U.S. Survey Foot."
- 2) Ground elevations are based on an observed GPS elevation (NAVD 1988 DATUM).
- 3) NEAREST EXISTING WELL: THOMSON B12-12, 752'
- 4) IMPROVEMENTS: See LOCATION DRAWING for all visible Improvements within 400' of disturbed area.
- 5) SURFACE USE: CROP LAND
- 6) INSTRUMENT OPERATOR: BRIAN ROTTINGHAUS

NOTE

According to Colorado law, you must commence any legal action based upon any defect in this W.L.C. within three years after you discover such defect. In no event, may any action based upon any defect in this survey be commenced more than ten years after the date of the certificate shown hereon. (13-80-105 C.R.S.)

LEGEND

- = ALIQUOT MONUMENT AS DESCRIBED
○ = CALCULATED POSITION

SURFACE LOCATION

LAT: 40.41413°N
LONG: 104.50719°W
PDOP: 1.8
ELEV: 4603'
1/4, 1/4: SW1/4NW1/4
NEAREST PROPERTY LINE: 258' WEST

BOTTOM HOLE

LAT: 40.41415°N
LONG: 104.49085°W

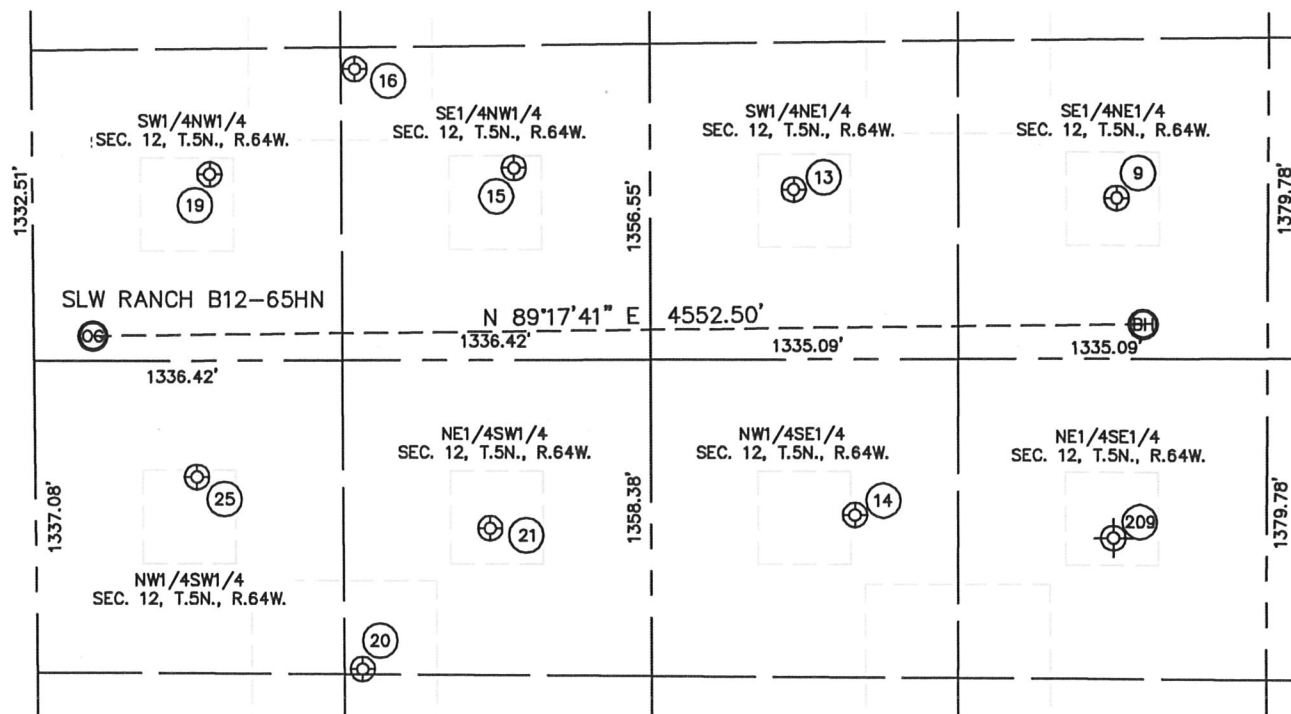


Brian T. Brinkman—On behalf of Lat40°, Inc.
Colorado Licensed Professional Land Surveyor No. 38175
DATE: rev 5/14/2012
PROJECT#: 2012029

SITE SKETCH

SLW RANCH B12-65HN

SECTION: 12
TOWNSHIP: 5N
RANGE: 64W



9
TREBOR B12-8
SE1/4NE1/4
2056' FNL
652' FEL
LAT-40.41564N
LONG-104.49123W
PDOP:1.3
ELEV: 4623'

13
TREBOR B12-7
SW1/4NE1/4
1993' FNL
2053' FEL
LAT-40.41578N
LONG-104.49625W
PDOP:1.4
ELEV: 4594'

14
KC B12-10
NW1/4SE1/4
2063' FSL
1779' FEL
LAT-40.41193N
LONG-104.49537W
PDOP:1.4
ELEV: 4593'

15
TREBOR B12-6
SE1/4NW1/4
1877' FNL
2090' FWL
LAT-40.41808N
LONG-104.50061W
PDOP:1.4
ELEV: 4591'

16
TREBOR B12-19
SE1/4NW1/4
1438' FNL
1402' FWL
LAT-40.41725N
LONG-104.50307W
PDOP:1.2
ELEV: 4590'

19
TREBOR B12-5
SW1/4NW1/4
1878' FNL
769' FWL
LAT-40.41603N
LONG-104.50535W
PDOP:1.3
ELEV: 4592'

20
THOMSON B12-25
NE1/4SW1/4
1372' FSL
1409' FWL
LAT-40.41018N
LONG-104.50307W
PDOP:1.4
ELEV: 4598'

21
THOMSON 3-12
NE1/4SW1/4
1984' FSL
1969' FWL
LAT-40.41182N
LONG-104.50105W
PDOP:1.4
ELEV: 4589'

25
THOMSON B12-12
NW1/4SW1/4
1409' FSL
701' FWL
LAT-40.41246N
LONG-104.50561W
PDOP:2.1
ELEV: 4601'

209
SLW 1-12
(Plugged & Abandoned)
NE1/4SE1/4
1980' FSL (COGCC)
660' FEL (COGCC)
LAT-40.411996N (COGCC)
LONG-104.491403W (COGCC)
PDOP:N/A
ELEV: 4615' (COGCC)

