

BERRY PETROLEUM COMPANY I-21 Pad

Location # 416468

Photo date: Oct 9, 2012



Viewing Southeast: Location & signage from entrance



Viewing North: well pad footprint, markings for cellar/conductors, and stable cut slope.



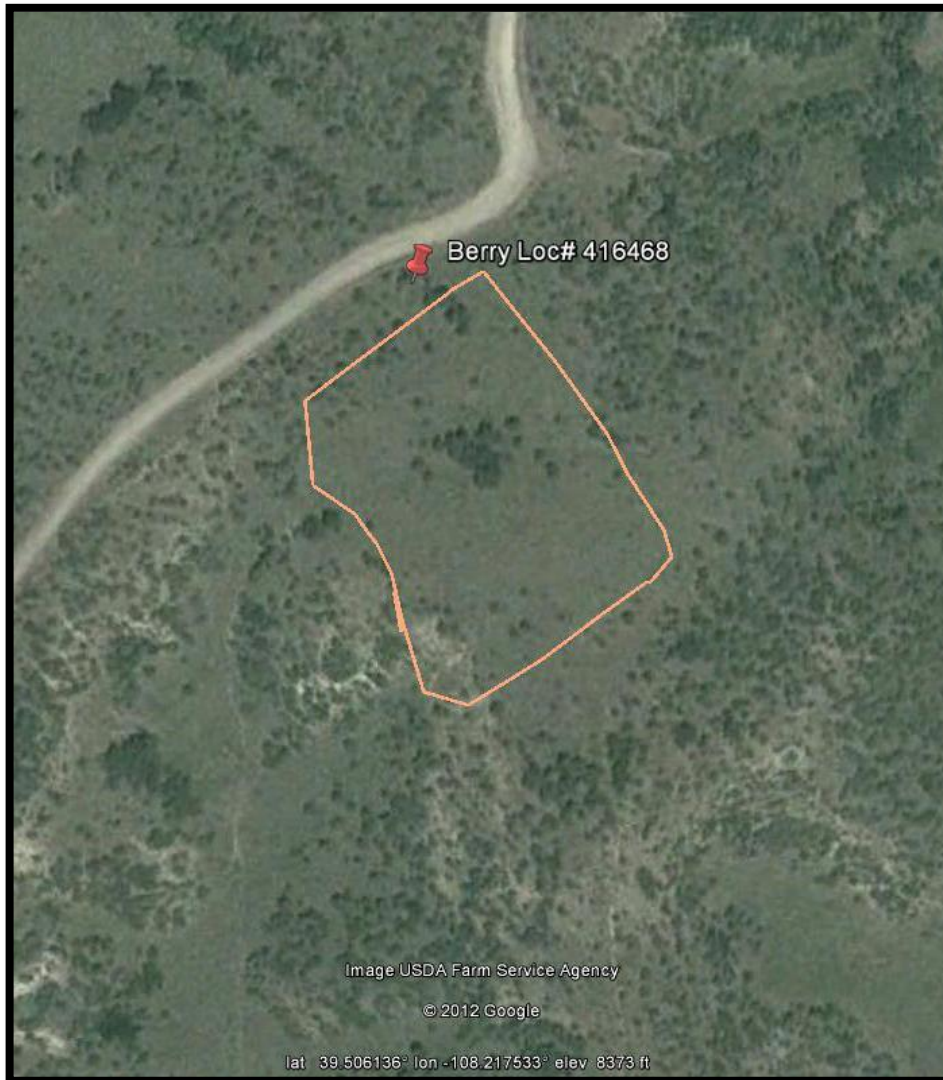
Stockpiled soils, secondary berming, and exterior slope of retention basin/sediment trap



Double berming & ditches along fill slope sides.

BERRY PETROLEUM COMPANY I-21 Pad

Location # 416468



Google Earth Aerial Image: 06/16/2005



Google Earth Aerial Image: 08/18/2011