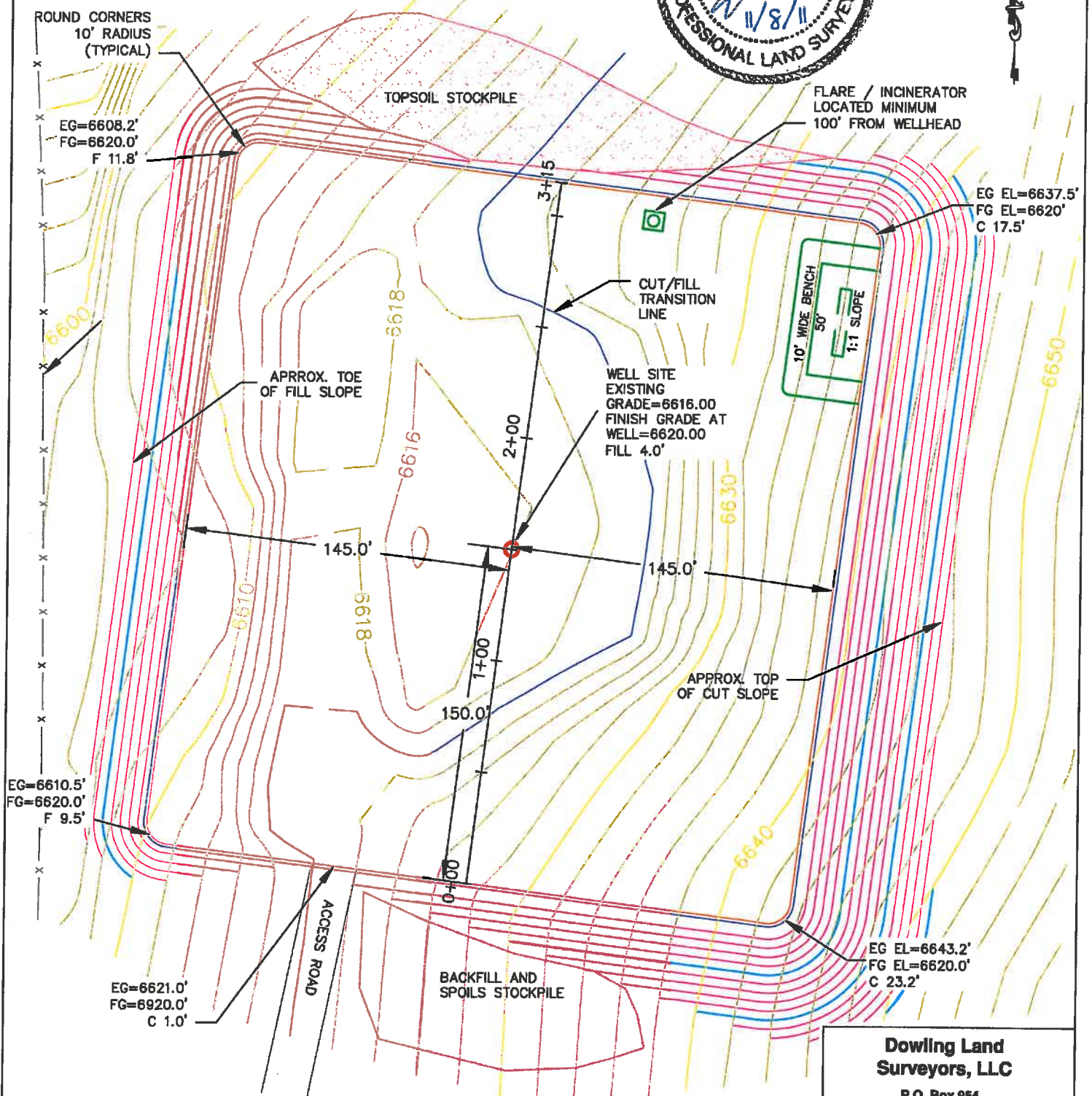
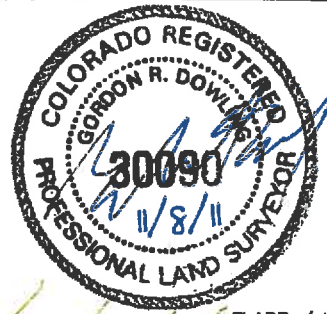


PRITLAW PARTNERS, LTD. 32-09
SITE PLAN LAYOUT FOR
WOLF MOUNTAIN RANCH
NW¼NE¼ SECTION 9, T6N, R87W, 6TH P.M.
ROUTT COUNTY, COLORADO



NOTES:

- 1) WELL LOCATED IN THE NW¼ NE¼ OF SECTION 9, TOWNSHIP 6 NORTH, RANGE 87 WEST, 6TH P.M., ROUTT COUNTY, COLORADO. 1335.6 FNL AND 2385.1 FEL

**Dowling Land
 Surveyors, LLC**

P.O. Box 954
 Hayden, Colorado 81639
 (970)-276-3613
 dowling@plotz.biz

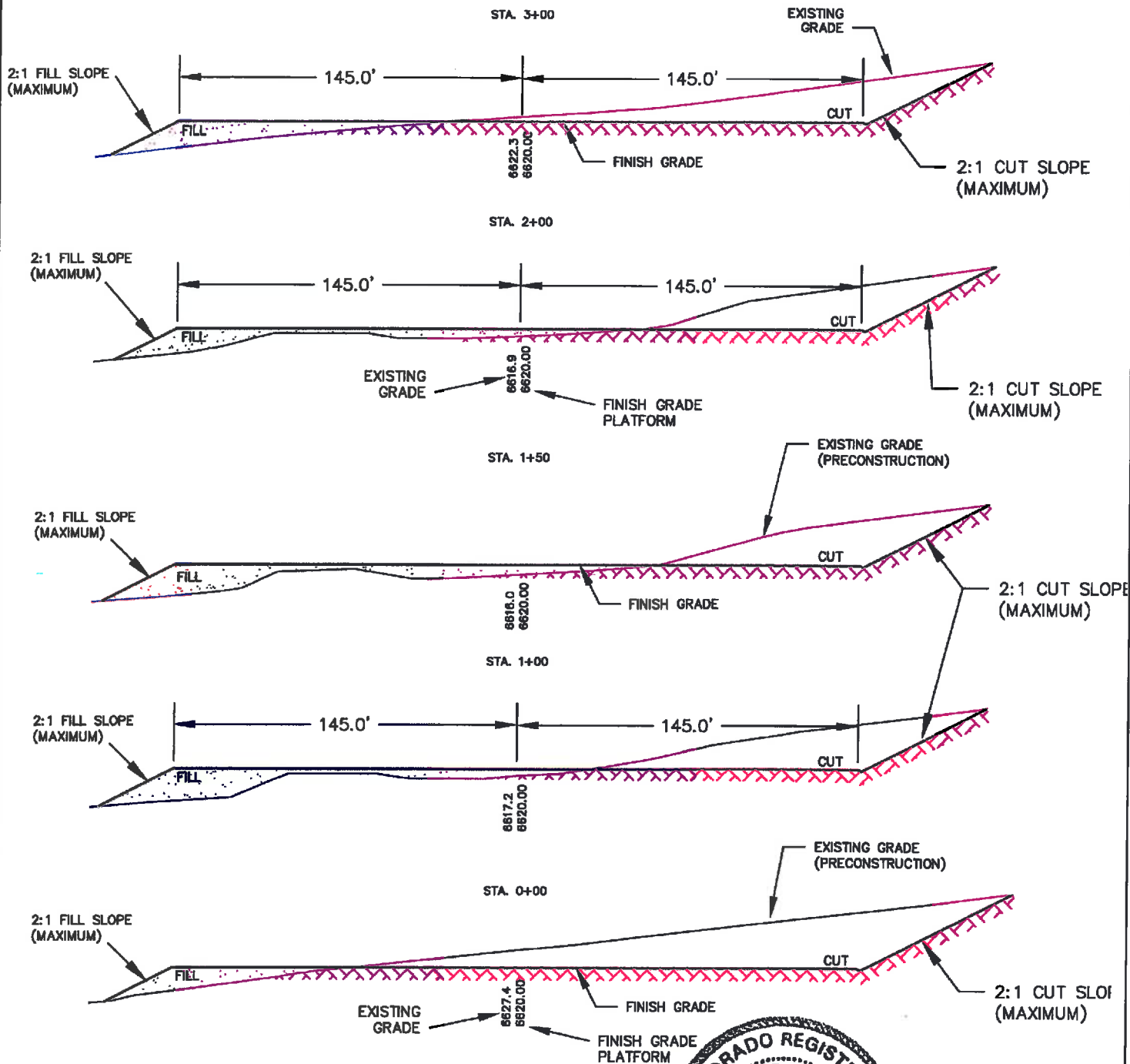
Horizontal Scale
 1" = 60'

FIGURE 1

DATE: 11-2-2011
 JOB NO. 1208-001

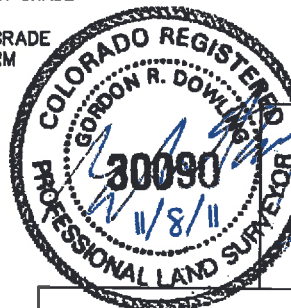
PRITLAW PARTNERS, LTD. 32-09
CONSTRUCTION LAYOUT CROSS SECTIONS
FOR WOLF MOUNTAIN RANCH
NW¼NE¼ SECTION 9, T6N, R87W, 6TH P.M.
ROUTT COUNTY, COLORADO

APPROXIMATE ACREAGE
WELL SITE DISTURBANCE = ±3.44 ACRES
ACCESS ROAD DISTURBANCE = ±0.12 ACRES
TOTAL ±3.56 ACRES



NOTES:

- 1) WELL LOCATED IN THE NW¼ NE¼ OF SECTION 9, TOWNSHIP 6 NORTH, RANGE 87 WEST, 6TH P.M., ROUTT COUNTY, COLORADO. 1335.6 FNL AND 2385.1 FEL
- 2) TOPSOIL NOT TO BE STRIPPED BELOW FINISHED GRADE OF WELL PAD SUBSTRUCTURE.
- 3) 6" TOPSOIL STRIPPING = 5,380 CY, CUT = 19,800 CY, FILL = 11030 CY
- 4) 8,800 CY OF EXCESS CUT MATERIAL (AFTER INTERIM RECLAMATION)



Dowling Land Surveyors, LLC

P.O. Box 954
Hayden, Colorado 81639
(970)-276-3613
dowling@plotz.biz

Horizontal Scale
1" = 60'

FIGURE 2

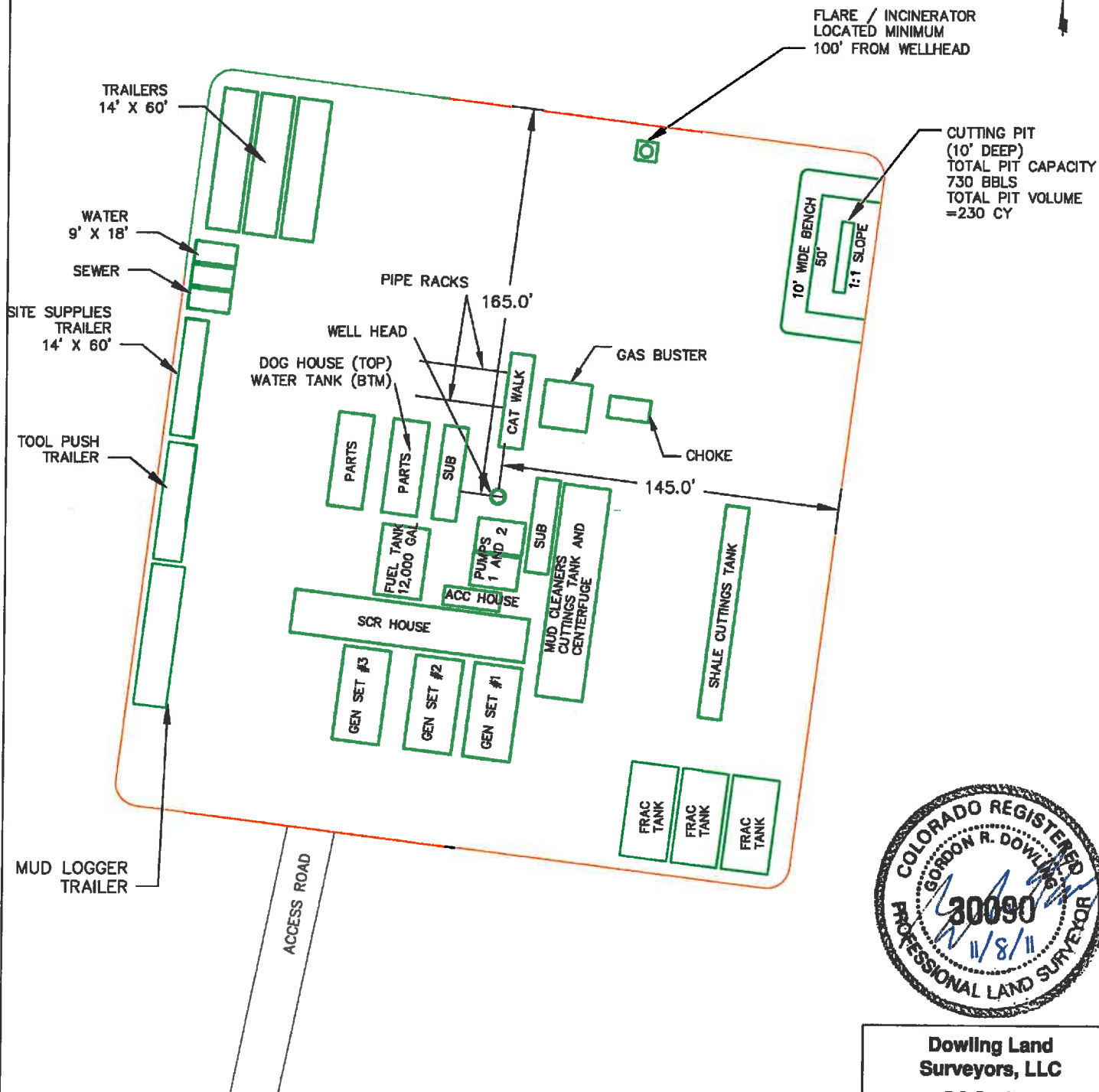
DATE: 11-3-2011
JOB NO. 1208-001

PRITLAW PARTNERS, LTD. 32-09

CONSTRUCTION LAYOUT FOR

WOLF MOUNTAIN RANCH

NW¼NE¼ SECTION 9, T6N, R87W, 6TH P.M.
ROUTT COUNTY, COLORADO



**Dowling Land
Surveyors, LLC**

P.O. Box 954
Hayden, Colorado 81639
(970)-276-3613
dowling@plotz.biz

NOTES:

1) WELL LOCATED IN THE NW¼ NE¼ OF SECTION 9, TOWNSHIP 6 NORTH, RANGE
87 WEST, 6TH P.M., ROUTT COUNTY, COLORADO. 1335.6 FNL AND 2385.1 FEL

Horizontal Scale

1" = 60'

FIGURE 3

DATE: 11-2-2011

JOB NO. 1208-001