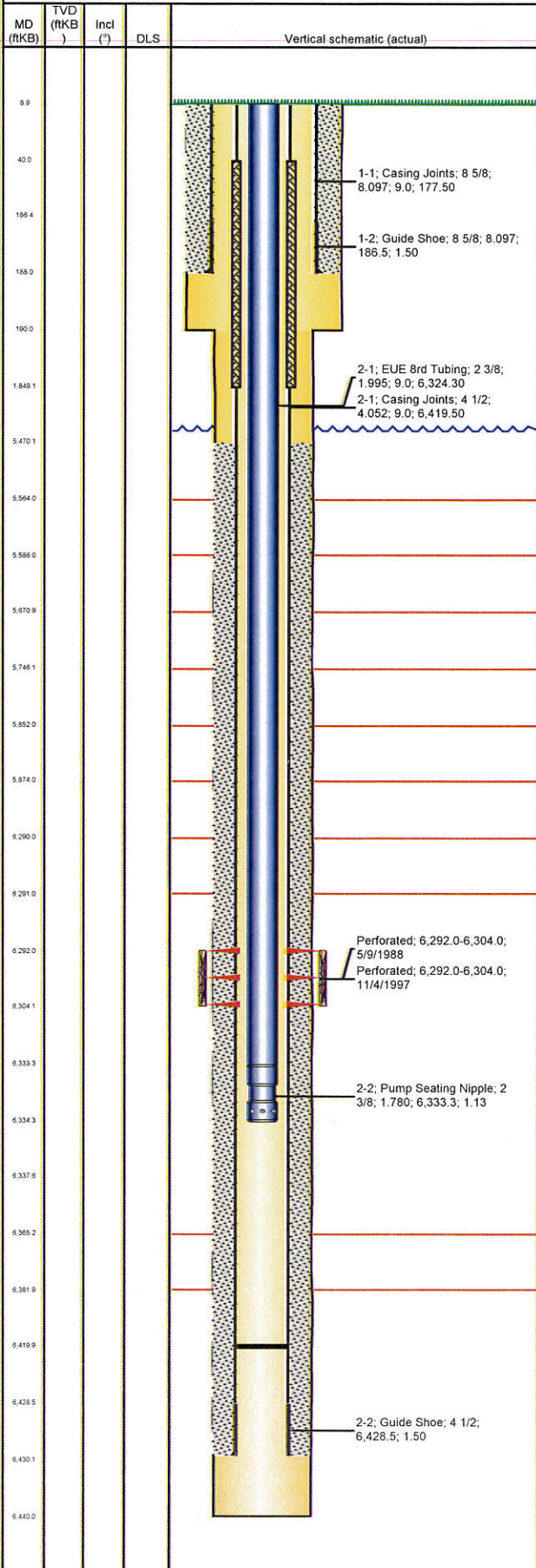


Well Name: LILLI UNIT 07-03

VERTICAL - ORIGINAL HOLE, 10/11/2012 8:42:10 AM



Well Header

API 05-123-13948	Business Unit WATTENBERG	District 25	Well Config VERTICAL
Original KB Elevation (ft) 4,758.00	KB - GL / MSL (ftKB) 9.00	Spud Date 4/27/1988	P & A Date

Comment
CEMENT SQZD HOLES IN CASING 1817'-1849' WITH UNKNOWN AMOUNT 10/13/97.

Directions To Well

WCR 127 & 96, NORTH 0.5 MILES, EAST 0.3 MILE, NORTH ONTO LOCATION.

Surface Location (Congressional)

Quarter 1 SE	Quarter 2 SW	Quarter 3 NE	Quarter 4 NW	Section 3	Township 8 N	Twnshp... N	Range 58 W	Rng E/W...
-----------------	-----------------	-----------------	-----------------	--------------	-----------------	----------------	---------------	------------

Bottom Hole Location

North-South Distance (ft)	From N or S Line	East-West Distance (ft)	From E or W Line
---------------------------	------------------	-------------------------	------------------

Plug Back Total Depths

Date	Depth (ftKB)	Method	Com
5/2/1988	6,420.0	CASING TALLY	

Wellbore Sections

Section Des	Size (in)	Act Top (ftKB)	Act Btm (ftKB)
SURFACE	12 1/4	9.0	190.0
PRODUCTION	7 7/8	190.0	6,440.0

Zone Statuses

Zone Name	Status Date	Status	Job
D SAND	5/26/1988	PR	DRILLING/COMPLETION - ORIGINAL, 4/27/1988 00:00

Casing Strings

Surface, 188.0ftKB

Casing Description	Run Date	OD (in)	Wt/Len (lb/ft)	Grade	Top (ftKB)	Set Depth...
Surface	4/28/1988	8 5/8	24.00	J-55	9.0	188.0

Production, 6,430.0ftKB

Casing Description	Run Date	OD (in)	Wt/Len (lb/ft)	Grade	Top (ftKB)	Set Depth...
Production	5/2/1988	4 1/2	10.50	J-55	9.0	6,430.0

Cement

Description	Top Depth (ftKB)	Bottom Depth (ftKB)
SURFACE CASING CEMENT	9.0	188.0
Description	Top Depth (ftKB)	Bottom Depth (ftKB)
PRODUCTION CASING CEMENT	5,470.0	6,430.0
Description	Top Depth (ftKB)	Bottom Depth (ftKB)
Cement Squeeze	40.0	1,849.0

Tubing Components

Item Des	OD (in)	Wt (lb/ft)	Grade	Jts	Len (ft)	Btm (ftKB)	Btm (TVD) (ftKB)
EUE 8rd Tubing	2 3/8	4.70	J-55	197	6,324.30	6,333.3	
Pump Seating Nipple	2 3/8	4.70	J-55	1	1.13	6,334.5	
Perforated Joint	2 3/8	4.70	J-55	1	3.20	6,337.7	

Perforation Data

Zone	Bnch/St g	Entered Shot Total	Top (ftKB)	Btm (ftKB)	Date
D SAND, ORIGINAL HOLE		46	6,292.0	6,304.0	5/9/1988
D SAND, ORIGINAL HOLE		25	6,292.0	6,304.0	11/4/1997

Stimulations & Treatments

Date	Zone	Primary Job Type
5/20/1988	D SAND, ORIGINAL HOLE	DRILLING/COMPLETION - ORIGINAL
Technical Result	Tech Result Details	Tech Result Note

Comment

Other In Hole

Run Date	Des	OD (in)	Top (ftKB)	Btm (ftKB)

Logs

Date	Type	Top (ftKB)	Btm (ftKB)
5/1/1988	COMPENSATED DENSITY	5,480.0	6,419.0
5/1/1988	INDUCTION	188.0	6,420.0
5/9/1988	CEMENT BOND	5,382.0	6,397.0