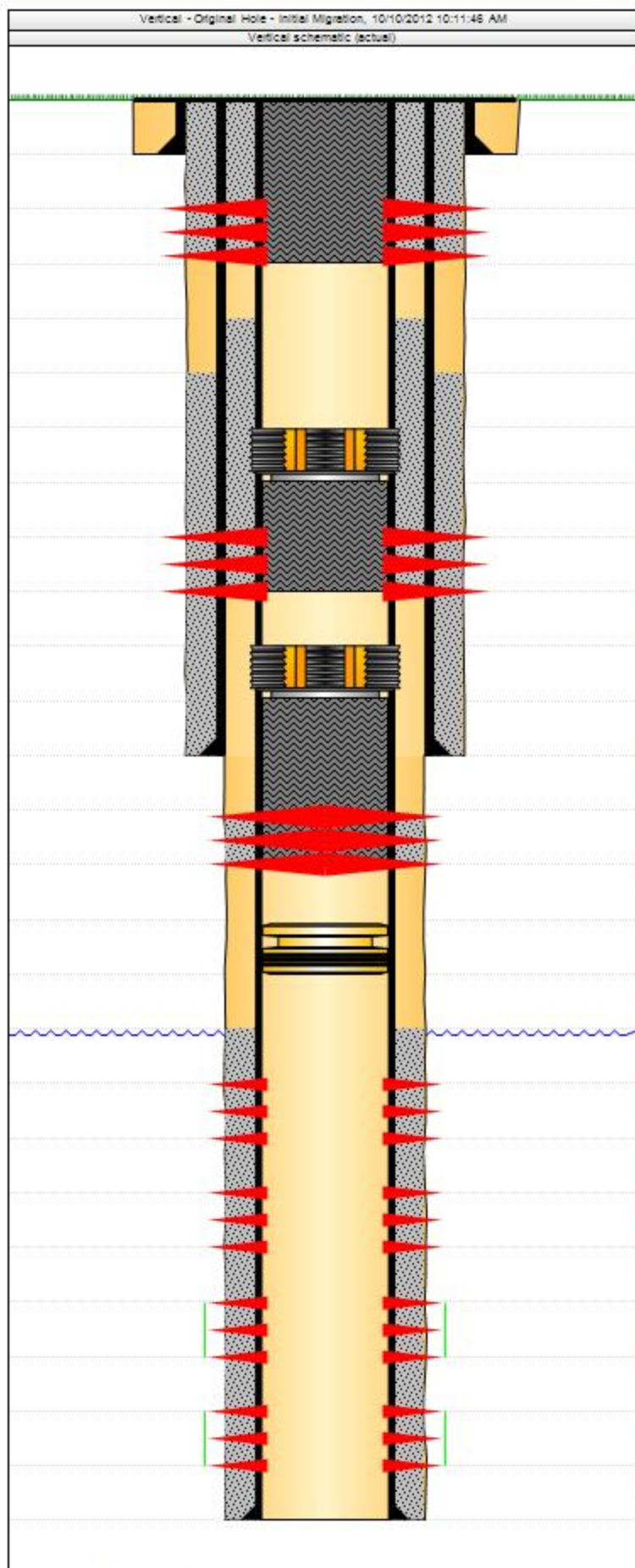


Final Well Report Detailed (graphic)

Well Name: Federal D16-7-94-S (RD16)

API# 05045066730000	Well Type Gas	Business Unit Southern Rockies	SBU South Piceance	Area Rulison	Pad RD16	State CO	County/Parish GARFIELD
------------------------	------------------	-----------------------------------	-----------------------	-----------------	-------------	-------------	---------------------------



Well Header Setup

Well Name Federal D16-7-94-S (RD16)		API# 05045066730000	
Original KB Elevation (ft) 7,089.90	Ground Elevation (ft) 7,089.90	Spud Date 07/08/1990	Final Rig Release Date 07/08/1990
Surface Legal Location		Latitude (decimal) (°) 39.44443000	Longitude (decimal) (°) 107.89624000

Wellbore Sections Setup

Wellbore Type	Kick Off Depth (ftKB)	VS Dir (°)	
Original Hole - Initial Migration			
Section Des	Hole Size (in)	Act Top (ftKB)	Act Btm (ftKB)
Surface	12 1/4	0.0	1,003.0
Intermediate	8 3/4	1,003.0	5,373.0
Production	6 1/4	5,373.0	9,161.0

Plug Back Total Depths

Date	Depth (ftKB)	Method	Com
09/26/2005	6,152.0		
11/11/2007	6,590.0		
09/25/2012	6,090.0	Wireline	tag w/ 3.70" gauging ring
09/26/2012	6,027.0	Tubing	tag cmt
10/01/2012	4,800.0	Wireline	tag cmt
10/03/2012	0.0		Cement down production casing returning cement to surface on both the Intermediate and Surface casing

Casing Data

Surface

Casing Description Surface			Run Date		Set Depth (ft)(5) 1,003.0
Item Des	OD (in)	ID (in)	Wt (lb/ft)	Grade	Len (ft)
Casing Joints	9 5/8	8.921	36.00		1,003.00

Intermediate

Casing Description Intermediate			Run Date		Set Depth (ft)(5) 5,373.0
Item Des	OD (in)	ID (in)	Wt (lb/ft)	Grade	Len (ft)
Casing Joints	7	6.366	23.00		5,373.00

Production

Casing Description Production			Run Date		Set Depth (ft)(5) 9,161.0
Item Des	OD (in)	ID (in)	Wt (lb/ft)	Grade	Len (ft)
Casing Joints	4 1/2	4.000	11.60		9,161.00

Cement Data

Surface, 1,003.0ftKB Proposed? No

Description Surface Casing Cement		String Surface, 1,003.0ftKB Proposed? No	Wellbore Original Hole - Initial Migration	Type Casing	
Stg # 1	Description Surface	Top (ftKB)		Btm (ftKB) 1,003.0	Full Return? Yes
Sequence		Fluid Des		Amount (sacks)	Class
Lead		40 Hifill, 100 Class G, 50 Class C			

Production, 9,161.0ftKB Proposed? No

Description Production Casing Cement		String Production, 9,161.0ftKB Proposed? No	Wellbore Original Hole - Initial Migration	Type Casing	
Stg # 1	Description Production	Top (ftKB) 7,058.0		Btm (ftKB) 9,161.0	Full Return? Yes
Sequence		Fluid Des		Amount (sacks)	Class
Lead		Class H		100	
Tail		Highbond		125	