

Noble Energy

Weld County, CO (NAD 83)

Sec. 8-T6N-R62W (Wells Ranch 8 North PAD)

Wells Ranch AE08-67-1HN - A4

Plan B

Plan: Plan B - Rev 0 Proposal

Sperry Drilling Services

Proposal Report

05 October, 2012

Well Coordinates: 1,428,558.19 N, 3,318,409.49 E (40° 30' 14.94" N, 104° 21' 17.82" W)

Ground Level: 4,987.00 ft

Local Coordinate Origin: Centered on Well Wells Ranch AE08-67-1HN - Slot A

Viewing Datum: KB=30' @ 5017.00ft (H&P 321)

TVDs to System: N

North Reference: Grid

Unit System: API - US Survey Feet - Custom

Geodetic Scale Factor Applied

Version: 2003.16 Build: 431

HALLIBURTON

Plan Report for Wells Ranch AE08-67-1HN - Plan B - Rev 0 Proposal

Measured Depth (ft)	Inclination (°)	Azimuth (°)	Vertical Depth (ft)	+N/-S (ft)	+E/-W (ft)	Vertical Section (ft)	Dogleg Rate (°/100ft)	Build Rate (°/100ft)	Turn Rate (°/100ft)	Toolface Azimuth (°)
0.00	0.00	0.00	0.00	0.00	0.00	0.00	0.00	0.00	0.00	0.00
100.00	0.00	0.00	100.00	0.00	0.00	0.00	0.00	0.00	0.00	0.00
200.00	0.00	0.00	200.00	0.00	0.00	0.00	0.00	0.00	0.00	0.00
300.00	0.00	0.00	300.00	0.00	0.00	0.00	0.00	0.00	0.00	0.00
400.00	0.00	0.00	400.00	0.00	0.00	0.00	0.00	0.00	0.00	0.00
500.00	0.00	0.00	500.00	0.00	0.00	0.00	0.00	0.00	0.00	0.00
600.00	0.00	0.00	600.00	0.00	0.00	0.00	0.00	0.00	0.00	0.00
700.00	0.00	0.00	700.00	0.00	0.00	0.00	0.00	0.00	0.00	0.00
800.00	0.00	0.00	800.00	0.00	0.00	0.00	0.00	0.00	0.00	0.00
900.00	0.00	0.00	900.00	0.00	0.00	0.00	0.00	0.00	0.00	0.00
1,000.00	0.00	0.00	1,000.00	0.00	0.00	0.00	0.00	0.00	0.00	0.00
1,100.00	0.00	0.00	1,100.00	0.00	0.00	0.00	0.00	0.00	0.00	0.00
1,200.00	0.00	0.00	1,200.00	0.00	0.00	0.00	0.00	0.00	0.00	0.00
1,300.00	0.00	0.00	1,300.00	0.00	0.00	0.00	0.00	0.00	0.00	0.00
1,400.00	0.00	0.00	1,400.00	0.00	0.00	0.00	0.00	0.00	0.00	0.00
1,500.00	0.00	0.00	1,500.00	0.00	0.00	0.00	0.00	0.00	0.00	0.00
1,600.00	0.00	0.00	1,600.00	0.00	0.00	0.00	0.00	0.00	0.00	0.00
1,700.00	0.00	0.00	1,700.00	0.00	0.00	0.00	0.00	0.00	0.00	0.00
1,800.00	0.00	0.00	1,800.00	0.00	0.00	0.00	0.00	0.00	0.00	0.00
1,900.00	0.00	0.00	1,900.00	0.00	0.00	0.00	0.00	0.00	0.00	0.00
2,000.00	0.00	0.00	2,000.00	0.00	0.00	0.00	0.00	0.00	0.00	0.00
2,100.00	0.00	0.00	2,100.00	0.00	0.00	0.00	0.00	0.00	0.00	0.00
2,200.00	0.00	0.00	2,200.00	0.00	0.00	0.00	0.00	0.00	0.00	0.00
2,300.00	0.00	0.00	2,300.00	0.00	0.00	0.00	0.00	0.00	0.00	0.00
2,400.00	0.00	0.00	2,400.00	0.00	0.00	0.00	0.00	0.00	0.00	0.00
2,500.00	0.00	0.00	2,500.00	0.00	0.00	0.00	0.00	0.00	0.00	0.00
Begin 2.5°/100ft Nudge to 12.0° Inclination at 2500.00ft										
2,600.00	2.50	246.28	2,599.97	-0.88	-2.00	-2.01	2.50	2.50	0.00	246.28
2,700.00	5.00	246.28	2,699.75	-3.51	-7.98	-8.03	2.50	2.50	0.00	0.00
2,800.00	7.50	246.28	2,799.14	-7.89	-17.95	-18.05	2.50	2.50	0.00	0.00
2,900.00	10.00	246.28	2,897.97	-14.01	-31.88	-32.04	2.50	2.50	0.00	0.00
2,980.00	12.00	246.28	2,976.50	-20.15	-45.85	-46.09	2.50	2.50	0.00	0.00
Begin 558.43ft Tangent at 2980.00ft										
3,000.00	12.00	246.28	2,996.06	-21.82	-49.66	-49.92	0.00	0.00	0.00	0.00
3,100.00	12.00	246.28	3,093.88	-30.18	-68.69	-69.06	0.00	0.00	0.00	0.00
3,200.00	12.00	246.28	3,191.69	-38.55	-87.73	-88.19	0.00	0.00	0.00	0.00
3,300.00	12.00	246.28	3,289.51	-46.91	-106.76	-107.33	0.00	0.00	0.00	0.00
3,400.00	12.00	246.28	3,387.32	-55.27	-125.80	-126.46	0.00	0.00	0.00	0.00
3,500.00	12.00	246.28	3,485.14	-63.64	-144.83	-145.60	0.00	0.00	0.00	0.00
3,538.43	12.00	246.28	3,522.73	-66.85	-152.15	-152.95	0.00	0.00	0.00	0.00
Begin 2.5°/100ft Drop to Vertical at 3538.43ft										
3,600.00	10.46	246.28	3,583.11	-71.68	-163.13	-163.99	2.50	-2.50	0.00	180.00
3,700.00	7.96	246.28	3,681.82	-78.12	-177.78	-178.72	2.50	-2.50	0.00	180.00
3,800.00	5.46	246.28	3,781.12	-82.82	-188.48	-189.47	2.50	-2.50	0.00	180.00
3,900.00	2.96	246.28	3,880.85	-85.77	-195.20	-196.23	2.50	-2.50	0.00	180.00
4,000.00	0.46	246.28	3,980.79	-86.97	-197.93	-198.98	2.50	-2.50	0.00	180.00
4,018.44	0.00	0.00	3,999.23	-87.00	-198.00	-199.05	2.50	-2.50	0.00	180.00
End of Drop at 4018.44ft										
4,100.00	0.00	0.00	4,080.79	-87.00	-198.00	-199.05	0.00	0.00	0.00	0.00
4,200.00	0.00	0.00	4,180.79	-87.00	-198.00	-199.05	0.00	0.00	0.00	0.00
4,300.00	0.00	0.00	4,280.79	-87.00	-198.00	-199.05	0.00	0.00	0.00	0.00
4,400.00	0.00	0.00	4,380.79	-87.00	-198.00	-199.05	0.00	0.00	0.00	0.00
4,500.00	0.00	0.00	4,480.79	-87.00	-198.00	-199.05	0.00	0.00	0.00	0.00
4,600.00	0.00	0.00	4,580.79	-87.00	-198.00	-199.05	0.00	0.00	0.00	0.00
4,700.00	0.00	0.00	4,680.79	-87.00	-198.00	-199.05	0.00	0.00	0.00	0.00
4,800.00	0.00	0.00	4,780.79	-87.00	-198.00	-199.05	0.00	0.00	0.00	0.00
4,900.00	0.00	0.00	4,880.79	-87.00	-198.00	-199.05	0.00	0.00	0.00	0.00
5,000.00	0.00	0.00	4,980.79	-87.00	-198.00	-199.05	0.00	0.00	0.00	0.00

Plan Report for Wells Ranch AE08-67-1HN - Plan B - Rev 0 Proposal

Measured Depth (ft)	Inclination (°)	Azimuth (°)	Vertical Depth (ft)	+N-S (ft)	+E-W (ft)	Vertical Section (ft)	Dogleg Rate (°/100ft)	Build Rate (°/100ft)	Turn Rate (°/100ft)	Toolface Azimuth (°)
5,100.00	0.00	0.00	5,080.79	-87.00	-198.00	-199.05	0.00	0.00	0.00	0.00
5,200.00	0.00	0.00	5,180.79	-87.00	-198.00	-199.05	0.00	0.00	0.00	0.00
5,300.00	0.00	0.00	5,280.79	-87.00	-198.00	-199.05	0.00	0.00	0.00	0.00
5,400.00	0.00	0.00	5,380.79	-87.00	-198.00	-199.05	0.00	0.00	0.00	0.00
5,500.00	0.00	0.00	5,480.79	-87.00	-198.00	-199.05	0.00	0.00	0.00	0.00
5,600.00	0.00	0.00	5,580.79	-87.00	-198.00	-199.05	0.00	0.00	0.00	0.00
5,700.00	0.00	0.00	5,680.79	-87.00	-198.00	-199.05	0.00	0.00	0.00	0.00
5,800.00	0.00	0.00	5,780.79	-87.00	-198.00	-199.05	0.00	0.00	0.00	0.00
5,900.00	0.00	0.00	5,880.79	-87.00	-198.00	-199.05	0.00	0.00	0.00	0.00
6,000.00	0.00	0.00	5,980.79	-87.00	-198.00	-199.05	0.00	0.00	0.00	0.00
6,074.41	0.00	0.00	6,055.20	-87.00	-198.00	-199.05	0.00	0.00	0.00	0.00
KOP - Begin 8.0°/100ft Build at 6074.41ft										
6,100.00	2.05	88.26	6,080.79	-86.99	-197.54	-198.59	8.00	8.00	0.00	88.26
6,200.00	10.05	88.26	6,180.15	-86.67	-187.02	-188.06	8.00	8.00	0.00	0.00
6,300.00	18.05	88.26	6,277.08	-85.93	-162.78	-163.81	8.00	8.00	0.00	0.00
6,400.00	26.05	88.26	6,369.69	-84.80	-125.29	-126.31	8.00	8.00	0.00	0.00
6,500.00	34.05	88.26	6,456.18	-83.28	-75.28	-76.29	8.00	8.00	0.00	0.00
6,600.00	42.05	88.26	6,534.87	-81.41	-13.73	-14.72	8.00	8.00	0.00	0.00
6,666.33	47.35	88.26	6,582.00	-80.00	32.89	31.91	8.00	8.00	0.00	0.00
Sharon Springs Mrkr										
6,700.00	50.05	88.26	6,604.22	-79.23	58.17	57.20	8.00	8.00	0.00	0.00
6,781.70	56.58	88.26	6,653.00	-77.25	123.62	122.67	8.00	8.00	0.00	0.00
Niobrara										
6,800.00	58.05	88.26	6,662.88	-76.78	139.02	138.07	8.00	8.00	0.00	0.00
6,827.53	60.25	88.26	6,677.00	-76.07	162.64	161.70	8.00	8.00	0.00	0.00
Niobrara A										
6,890.97	65.32	88.26	6,706.00	-74.36	219.01	218.09	8.00	8.00	0.00	0.00
Niobrara A Marl										
6,900.00	66.05	88.26	6,709.72	-74.11	227.24	226.32	8.00	8.00	0.00	0.00
7,000.00	74.05	88.26	6,743.82	-71.26	321.12	320.23	8.00	8.00	0.00	0.00
7,100.00	82.05	88.26	6,764.51	-68.30	418.83	417.96	8.00	8.00	0.00	0.00
7,120.00	83.65	88.26	6,767.00	-67.70	438.66	437.81	8.00	8.00	0.00	0.00
Niobrara B										
7,136.91	85.00	88.26	6,768.67	-67.19	455.48	454.63	8.00	8.00	0.00	0.00
Begin 75.00ft Tangent at 7136.91ft - 7" Csg										
7,200.00	85.00	88.26	6,774.17	-65.29	518.30	517.47	0.00	0.00	0.00	0.00
7,211.91	85.00	88.26	6,775.21	-64.93	530.16	529.33	0.00	0.00	0.00	0.00
Continue 8.0°/100ft Build at 7211.91ft										
7,276.91	90.20	88.26	6,777.93	-62.96	595.05	594.24	8.00	8.00	0.00	0.00
End of Build at 7276.91ft										
7,300.00	90.20	88.26	6,777.85	-62.26	618.13	617.33	0.00	0.00	0.00	0.00
7,400.00	90.20	88.26	6,777.50	-59.23	718.08	717.31	0.00	0.00	0.00	0.00
7,500.00	90.20	88.26	6,777.15	-56.20	818.04	817.29	0.00	0.00	0.00	0.00
7,600.00	90.20	88.26	6,776.80	-53.17	917.99	917.27	0.00	0.00	0.00	0.00
7,700.00	90.20	88.26	6,776.45	-50.14	1,017.94	1,017.26	0.00	0.00	0.00	0.00
7,800.00	90.20	88.26	6,776.10	-47.11	1,117.90	1,117.24	0.00	0.00	0.00	0.00
7,900.00	90.20	88.26	6,775.75	-44.08	1,217.85	1,217.22	0.00	0.00	0.00	0.00
8,000.00	90.20	88.26	6,775.41	-41.05	1,317.80	1,317.21	0.00	0.00	0.00	0.00
8,100.00	90.20	88.26	6,775.06	-38.02	1,417.76	1,417.19	0.00	0.00	0.00	0.00
8,200.00	90.20	88.26	6,774.71	-34.99	1,517.71	1,517.17	0.00	0.00	0.00	0.00
8,300.00	90.20	88.26	6,774.36	-31.96	1,617.67	1,617.16	0.00	0.00	0.00	0.00
8,400.00	90.20	88.26	6,774.01	-28.93	1,717.62	1,717.14	0.00	0.00	0.00	0.00
8,500.00	90.20	88.26	6,773.66	-25.90	1,817.57	1,817.12	0.00	0.00	0.00	0.00
8,600.00	90.20	88.26	6,773.31	-22.87	1,917.53	1,917.10	0.00	0.00	0.00	0.00
8,700.00	90.20	88.26	6,772.96	-19.84	2,017.48	2,017.09	0.00	0.00	0.00	0.00
8,800.00	90.20	88.26	6,772.61	-16.81	2,117.43	2,117.07	0.00	0.00	0.00	0.00
8,900.00	90.20	88.26	6,772.26	-13.78	2,217.39	2,217.05	0.00	0.00	0.00	0.00
9,000.00	90.20	88.26	6,771.91	-10.75	2,317.34	2,317.04	0.00	0.00	0.00	0.00

Plan Report for Wells Ranch AE08-67-1HN - Plan B - Rev 0 Proposal

Measured Depth (ft)	Inclination (°)	Azimuth (°)	Vertical Depth (ft)	+N/-S (ft)	+E/-W (ft)	Vertical Section (ft)	Dogleg Rate (°/100ft)	Build Rate (°/100ft)	Turn Rate (°/100ft)	Toolface Azimuth (°)
9,100.00	90.20	88.26	6,771.57	-7.72	2,417.29	2,417.02	0.00	0.00	0.00	0.00
Hold Angle at 90.20°										
9,200.00	90.20	88.26	6,771.22	-4.69	2,517.25	2,517.00	0.00	0.00	0.00	0.00
9,300.00	90.20	88.26	6,770.87	-1.66	2,617.20	2,616.99	0.00	0.00	0.00	0.00
9,400.00	90.20	88.26	6,770.52	1.37	2,717.15	2,716.97	0.00	0.00	0.00	0.00
9,500.00	90.20	88.26	6,770.17	4.40	2,817.11	2,816.95	0.00	0.00	0.00	0.00
9,600.00	90.20	88.26	6,769.82	7.43	2,917.06	2,916.93	0.00	0.00	0.00	0.00
9,700.00	90.20	88.26	6,769.47	10.46	3,017.01	3,016.92	0.00	0.00	0.00	0.00
9,800.00	90.20	88.26	6,769.12	13.49	3,116.97	3,116.90	0.00	0.00	0.00	0.00
9,900.00	90.20	88.26	6,768.77	16.52	3,216.92	3,216.88	0.00	0.00	0.00	0.00
10,000.00	90.20	88.26	6,768.42	19.55	3,316.87	3,316.87	0.00	0.00	0.00	0.00
10,100.00	90.20	88.26	6,768.08	22.58	3,416.83	3,416.85	0.00	0.00	0.00	0.00
10,200.00	90.20	88.26	6,767.73	25.61	3,516.78	3,516.83	0.00	0.00	0.00	0.00
10,300.00	90.20	88.26	6,767.38	28.64	3,616.73	3,616.82	0.00	0.00	0.00	0.00
10,400.00	90.20	88.26	6,767.03	31.67	3,716.69	3,716.80	0.00	0.00	0.00	0.00
10,500.00	90.20	88.26	6,766.68	34.70	3,816.64	3,816.78	0.00	0.00	0.00	0.00
10,600.00	90.20	88.26	6,766.33	37.73	3,916.59	3,916.76	0.00	0.00	0.00	0.00
10,700.00	90.20	88.26	6,765.98	40.76	4,016.55	4,016.75	0.00	0.00	0.00	0.00
10,800.00	90.20	88.26	6,765.63	43.79	4,116.50	4,116.73	0.00	0.00	0.00	0.00
10,900.00	90.20	88.26	6,765.28	46.82	4,216.46	4,216.71	0.00	0.00	0.00	0.00
11,000.00	90.20	88.26	6,764.93	49.85	4,316.41	4,316.70	0.00	0.00	0.00	0.00
11,100.00	90.20	88.26	6,764.58	52.88	4,416.36	4,416.68	0.00	0.00	0.00	0.00
11,152.27	90.20	88.26	6,764.40	54.47	4,468.61	4,468.94	0.00	0.00	0.00	0.00
Total Depth at 11152.27ft										

Plan Annotations

Measured Depth (ft)	Vertical Depth (ft)	Local Coordinates		Comment
		+N/-S (ft)	+E/-W (ft)	
2,500.00	2,500.00	0.00	0.00	Begin 2.5°/100ft Nudge to 12.0° Inclination at 2500.00ft
2,980.00	2,976.50	-20.15	-45.85	Begin 558.43ft Tangent at 2980.00ft
3,538.43	3,522.73	-66.85	-152.15	Begin 2.5°/100ft Drop to Vertical at 3538.43ft
4,018.44	3,999.23	-87.00	-198.00	End of Drop at 4018.44ft
6,074.41	6,055.20	-87.00	-198.00	KOP - Begin 8.0°/100ft Build at 6074.41ft
7,136.91	6,768.67	-67.19	455.48	Begin 75.00ft Tangent at 7136.91ft
7,211.91	6,775.21	-64.93	530.16	Continue 8.0°/100ft Build at 7211.91ft
7,276.91	6,777.93	-62.96	595.05	End of Build at 7276.91ft
9,100.00	6,771.57	-7.72	2,417.29	Hold Angle at 90.20°
11,152.27	6,764.40	54.47	4,468.61	Total Depth at 11152.27ft

Vertical Section Information

Angle Type	Target	Azimuth (°)	Origin Type	Origin		Start TVD (ft)
				+N/-S (ft)	+E/-W (ft)	
Target	Wells Ranch AE08-67-1HN_PlanB - Rev0_B HL Tgt	89.30	Slot	0.00	0.00	0.00

Survey tool program

From (ft)	To (ft)	Survey/Plan	Survey Tool
0.00	11,152.27	Plan B - Rev 0 Proposal	MWD

Plan Report for Wells Ranch AE08-67-1HN - Plan B - Rev 0 Proposal

Casing Details

Measured Depth (ft)	Vertical Depth (ft)	Name	Casing Diameter (")	Hole Diameter (")
7,136.91	6,768.67	7" Csg	7	8-3/4

Formation Details

Measured Depth (ft)	Vertical Depth (ft)	Name	Lithology	Dip (°)	Dip Direction (°)
6,666.33	6,582.00	Sharon Springs Mrkr		0.00	359.39
6,781.70	6,653.00	Niobrara		0.00	359.39
6,827.53	6,677.00	Niobrara A		0.00	359.39
6,890.97	6,706.00	Niobrara A Marl		0.00	359.39
7,120.00	6,767.00	Niobrara B		0.00	359.39

Targets associated with this wellbore

Target Name	TVD (ft)	+N/-S (ft)	+E/-W (ft)	Shape
Wells Ranch AE08-67-1HN_PlanB - Rev0_BHL Tgt	6,764.40	54.47	4,468.61	Point
Wells Ranch AE08-69-1HN_Sec. 8 460' Setbacks	-1.00	112.93	-1.45	Polygon
Wells Ranch AE08-69-1HN_Sec. 8 Lines	-1.00	112.93	-1.45	Polygon

North Reference Sheet for Sec. 8-T6N-R62W (Wells Ranch 8 North PAD) - Wells Ranch AE08-67-1HN - Plan B

All data is in US Feet unless otherwise stated. Directions and Coordinates are relative to Grid North Reference.

Vertical Depths are relative to KB=30' @ 5017.00ft (H&P 321). Northing and Easting are relative to Wells Ranch AE08-67-1HN - Slot A4

Coordinate System is US State Plane 1983, Colorado Northern Zone using datum North American Datum 1983, ellipsoid GRS 1980

Projection method is Lambert Conformal Conic (2 parallel)

Central Meridian is -105.50°, Longitude Origin:0° 0' 0.000 E°, Latitude Origin:40° 47' 0.000 N°

False Easting: 3,000,000.00ft, False Northing: 1,000,000.00ft, Scale Reduction: 0.99996660

Grid Coordinates of Well: 1,428,558.19 ft N, 3,318,409.49 ft E

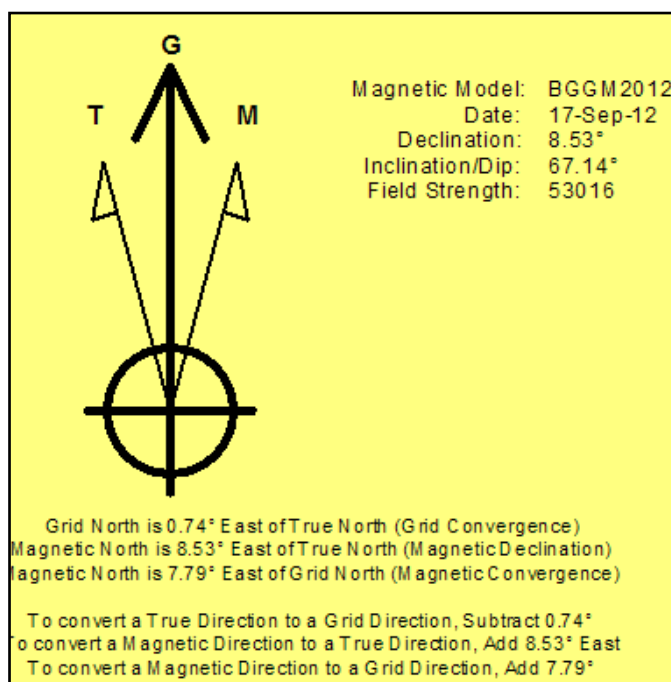
Geographical Coordinates of Well: 40° 30' 14.94" N, 104° 21' 17.82" W

Grid Convergence at Surface is: 0.74°

Based upon Minimum Curvature type calculations, at a Measured Depth of 11,152.27ft

the Bottom Hole Displacement is 4,468.94ft in the Direction of 89.30° (Grid).

Magnetic Convergence at surface is: -7.79° (17 September 2012, , BGGM2012)



Project: Weld County, CO (NAD 83)
Site: Sec. 8-T6N-R62W (Wells Ranch 8 North PAD)
Well: Wells Ranch AE08-67-1HN
Wellbore: Plan B
Design: Plan B - Rev 0 Proposal

Noble Energy

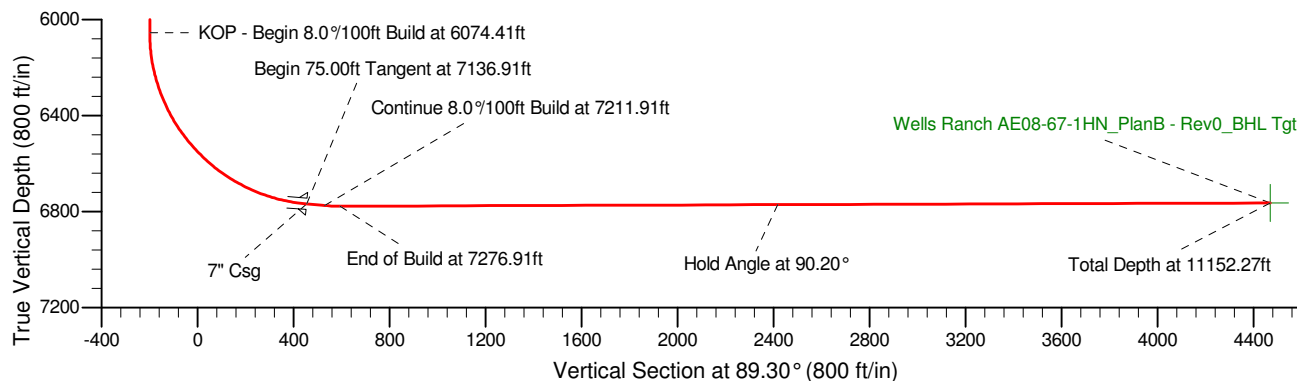
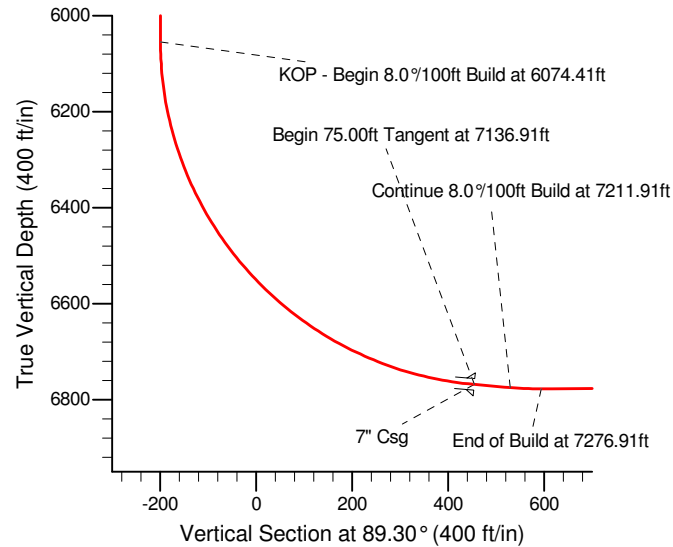
HALLIBURTON
Sperry Drilling

SECTION DETAILS

Sec	MD	Inc	Azi	TVD	+N/-S	+E/-W	DLeg	TFace	VSec	Target
1	0.00	0.00	0.00	0.00	0.00	0.00	0.00	0.00	0.00	
2	2500.00	0.00	0.00	2500.00	0.00	0.00	0.00	0.00	0.00	
3	2980.00	12.00	246.28	2976.50	-20.15	-45.85	2.50	246.28	-46.09	
4	3538.43	12.00	246.28	3522.73	-66.85	-152.15	0.00	0.00	-152.95	
5	4018.44	0.00	0.00	3999.23	-87.00	-198.00	2.50	180.00	-199.05	
6	6074.41	0.00	0.00	6055.20	-87.00	-198.00	0.00	0.00	-199.05	
7	7136.91	85.00	88.26	6768.67	-67.19	455.48	8.00	88.26	454.62	Wells Ranch AE08-67-1HN_PlanB - Rev0_BHL Tgt
8	7211.91	85.00	88.26	6775.21	-64.93	530.16	0.00	0.00	529.33	
9	7276.91	90.20	88.26	6777.93	-62.96	595.05	8.00	0.00	594.24	Wells Ranch AE08-67-1HN_PlanB - Rev0_BHL Tgt
10	11152.27	90.20	88.26	6764.40	54.47	4468.61	0.00	0.00	4468.94	Wells Ranch AE08-67-1HN_PlanB - Rev0_BHL Tgt

WELLBORE TARGET DETAILS (LAT/LONG)

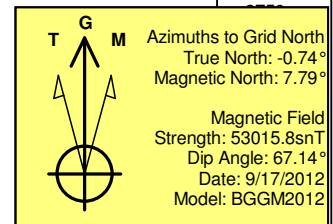
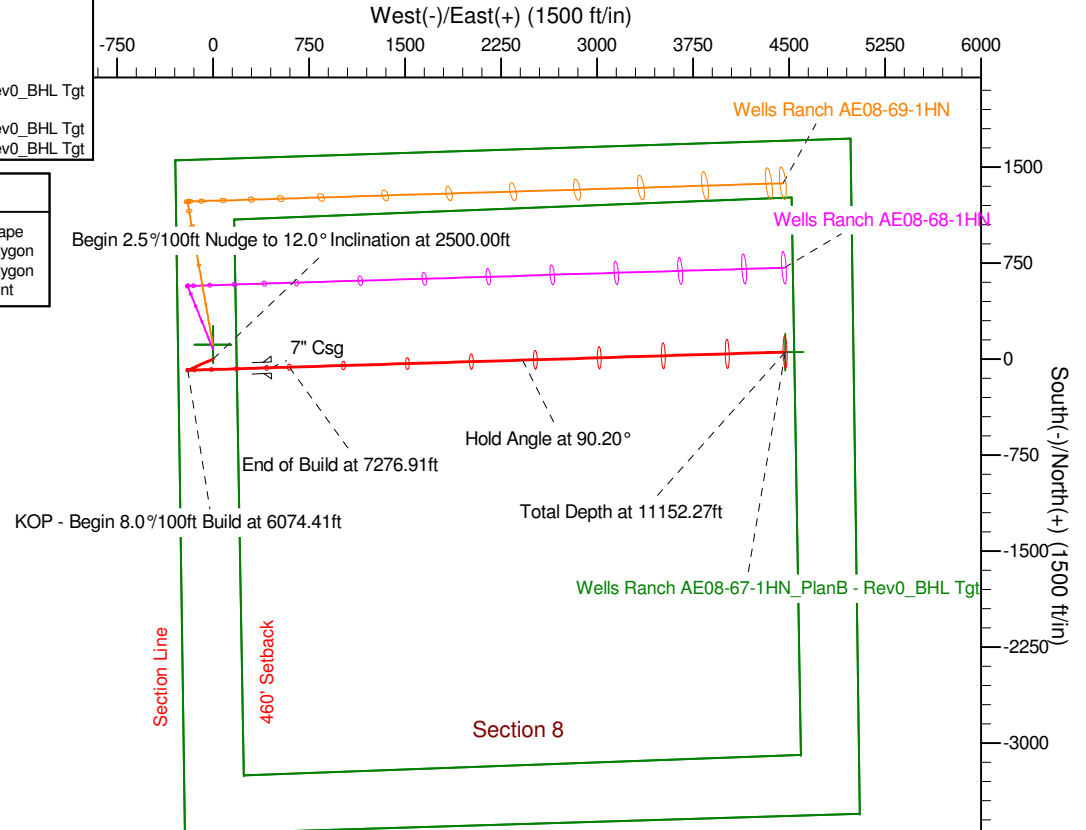
Name	TVD	+N/-S	+E/-W	Latitude	Longitude	Shape
Wells Ranch AE08-69-1HN_Sec. 8 460' Setbacks	-1.00	112.93	-1.45	40° 30' 16.056 N	104° 21' 17.820 W	Polygon
Wells Ranch AE08-69-1HN_Sec. 8 Lines	-1.00	112.93	-1.45	40° 30' 16.056 N	104° 21' 17.820 W	Polygon
Wells Ranch AE08-67-1HN_PlanB - Rev0_BHL Tgt	6764.40	54.47	4468.61	40° 30' 14.904 N	104° 20' 19.968 W	Point



Surface: 1560' FNL, 272' FWL

BHL: 1650' FNL, 535' FEL

Casing Pt: 1642' FNL, 726' FWL



WELL DETAILS: Wells Ranch AE08-67-1HN

Ground Level: 4987.00	
Northing	Easting
1428558.19	3318409.49

Latitude	Longitude
40° 30' 14.940 N	104° 21' 17.820 W

Plan: Plan B - Rev 0 Proposal (Wells Ranch AE08-67-1HN/Plan B)

Created By: Jay Lantz Date: 13:48, October 05 2012

Approved: Date: