

## BERRY PETROLEUM COMPANY M-16 595 PAD Location #311634

Photo date: Oct 3, 2012



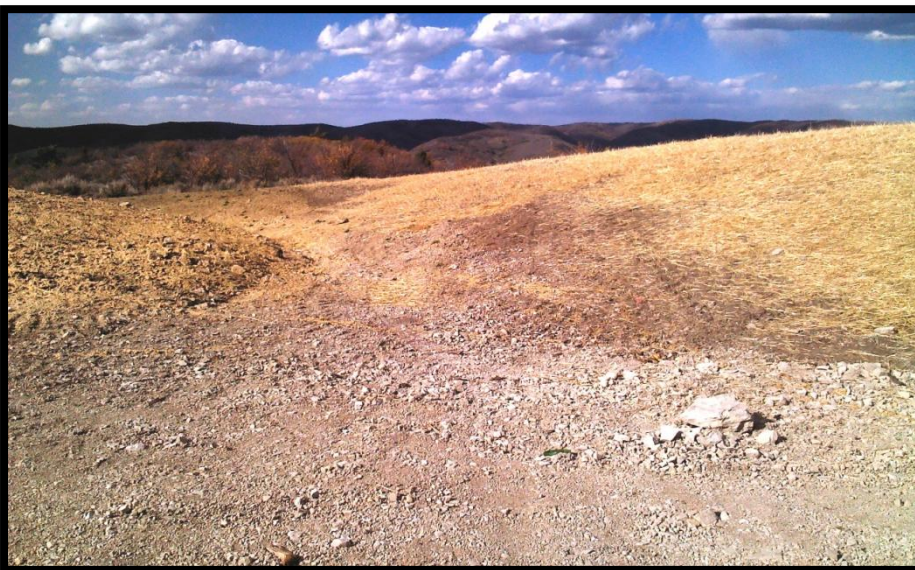
View of re-contoured slopes,, w/contoured disking, & mulching. PBV is clean & well fenced but requires secondary containment.



View of Location near entrance, signage, mulched & surface prepared perimeter exteriors & secondary containment for methanol tank.



Reworked surface areas enclosing pad. Surfaces are tilled, mulched, & have pocket-hole design features. Vegetated 2ndary ditches & berms along toe of pad area.



Viewing north from northern end of location: Re-countered slopes w/ landform-designed drainage basins. Surfaces tilled, disked, & mulched.



**BERRY PETROLEUM COMPANY M-16 595 PAD    Location ID# 311634**



COGCC Map guide 8/2011 Aerial Photo: re-bermed areas

**BERRY PETROLEUM COMPANY M-16 595 PAD    Location ID# 311634**



COGCC Map guide 2009 Aerial Photo: Drilling reserve pit, (which is now backfilled & graded)