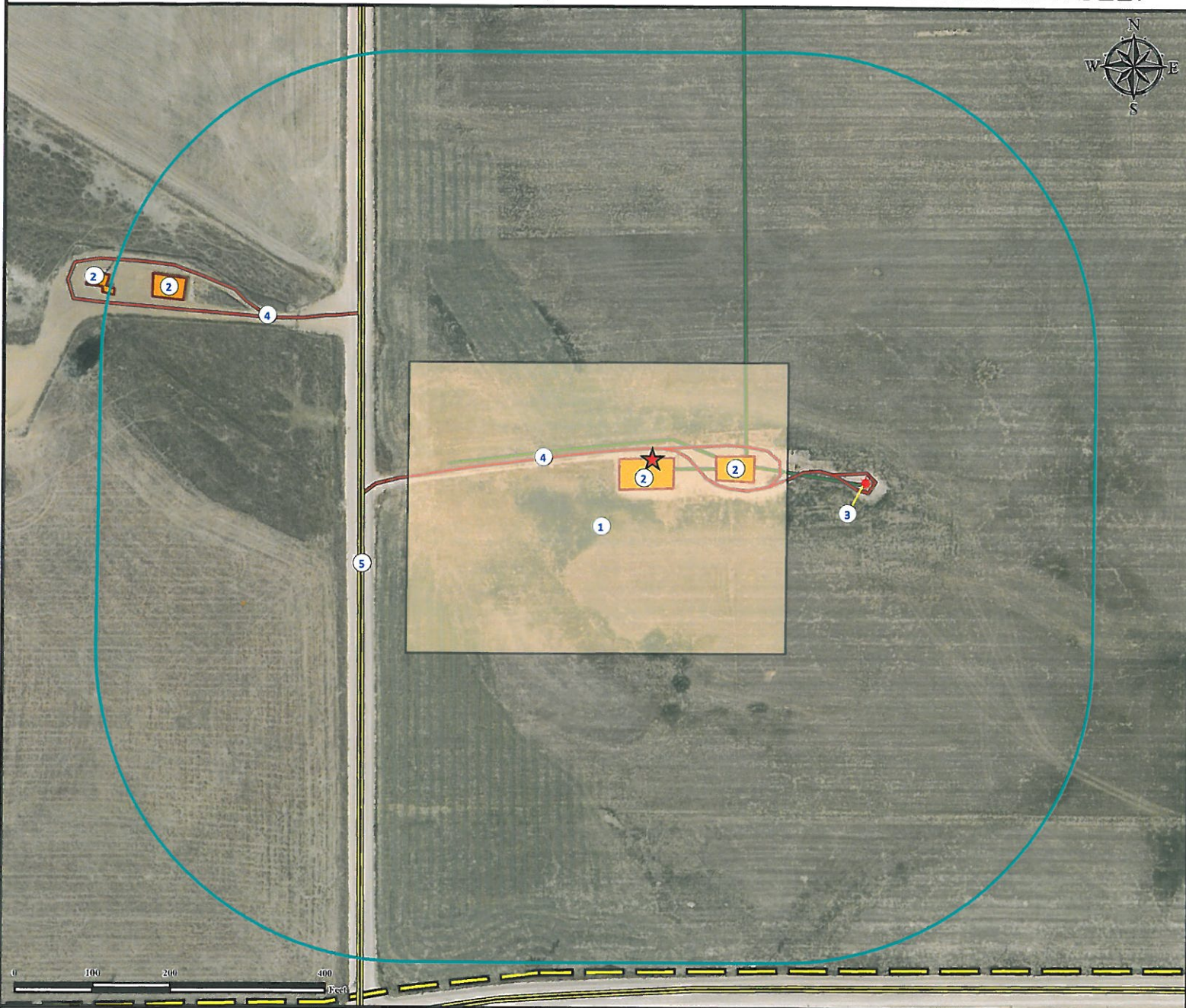


Location Drawing

RUSSIAN FIDDLER 35C-18HZ FACILITY

SW¼ SW¼ SECTION 19, TOWNSHIP 2 NORTH, RANGE 65 WEST OF THE 6TH PRINCIPAL MERIDIAN



- | | |
|---|---|
| 1. Proposed Well RUSSIAN FIDDLER 35C-18HZ FACILITY. | 4. Private Roads are ±15' N and ±421' NW. |
| 2. Existing Facilities are ±3' S, ±82' E, ±640' NW, and ±729' NW. | 5. County Road 37 is ±377' W. |
| 3. Existing Well UPRR 38 PAN AM A #1 is ±278' SE. | |

Legend

- | | | |
|---------------------|------------------------|----------------|
| ★ Existing Well | — Underground Pipeline | == Public Road |
| ★ Reference Point | □ Facilities Enclosure | — Private Road |
| □ Proposed Facility | □ 400' Radius | — Powerline |

Reference Location

** All Measurements are Made from

★ Reference Point **

Lat: 40.118612° Long: -104.714528° (NAD83)
Elevation: 5021 Feet

371' FWL, 733' FSL



Use our resources to find yours!
www.petro-fs.com
(303) 928-7128

Field Date: 03/2/2011
Drafting Date: 10/09/2011
Drafter: GWB
Revision: 1

Surface Use: Dryland Crop

Data Sources:
- Aerial courtesy of Anadarko Petroleum Corporation (2010)

Prepared for:



KERR-MCGEE OIL & GAS ONSHORE LP