

®

**TEMPERATURE  
CCL LOG**

**COMPANY SG INTERESTS**  
**WELL ECK 12-90-1 #1**  
**FIELD BULL MOUNTAIN**  
**CNTY GUNNINSON STATE CO**

**COMPANY SG INTERESTS**  
**WELL ECK 12-90-1 #1**  
**FIELD BULL MOUNTAIN**  
**COUNTY GUNNINSON**

**STATE COLORADO**

**LOCATION:**

**OTHER SERVICES:**

**SEC.1**

**TWP.12**

**RGE9**

**NONE**

**PERM., DATUM Ground Level**  
**LOG MEASURED FROM K.B. 24 FT. ABOVE PERMANENT DATUM**  
**DRILLING MEASURED FROM K.B.**

**ELEV.:K.B.  
D.F.  
G.L.**

**DATE 05-OCT-12**

**RUN NO. ONE**

**DEPTH DRILLER 4739'**

**DEPTH LOGGER 2600'**

**BTM. LOG INTERVAL 2600'**

**TOP LOG INTERVAL SURFACE**

**OPEN HOLE SIZE 7.875"**

**TYPE FLUID WATER**

**DENS. VISC. 8.3 N/A**

**MAX. REC. TEMP. °F 0**

**EST. CEMENT TOP SEE LOG**

**TIME WELL READY ROA**

**TIME LOGGER ON BTM. SEE LOG**

**EQUIP. NO. 14113**

**LOCATION GRD. JUNCTION**

**RECORDED BY P. EDWARDS P. MAZUR**

**WITNESSED BY G. VICK**

**BOREHOLE RECORD**

**TUBING RECORD**

**RUN NO. BIT FROM TO SIZE WGT. FROM TO**

**CASING RECORD SIZE WT./FT GRADE TYPE JOINT TOP BOTTOM**

**SURFACE STRING**

**PROD. STRING 5.5" 17# SURF. 4739'**

**LINER**

[illegible]

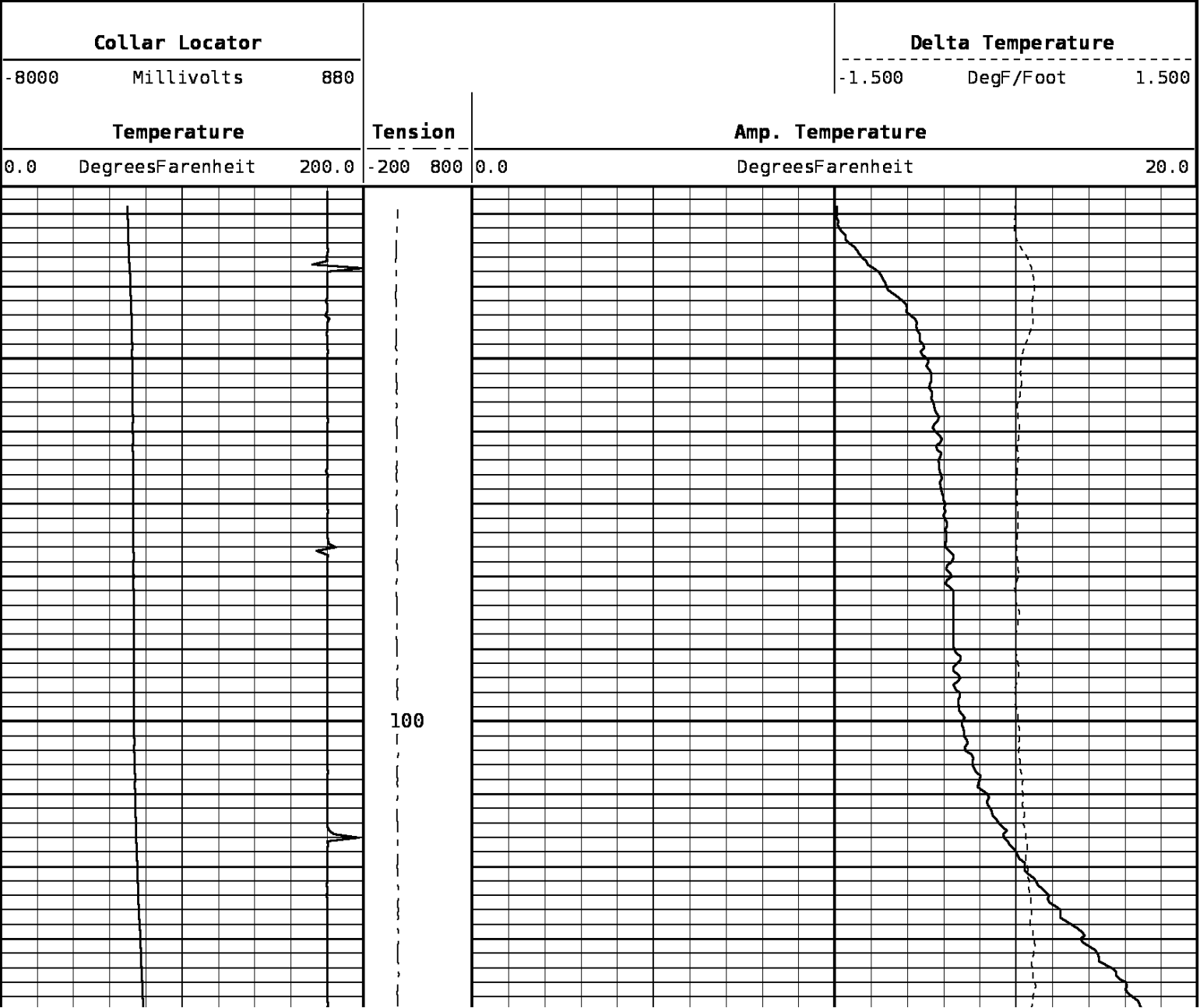

DEPTH SCALE: 5":100'

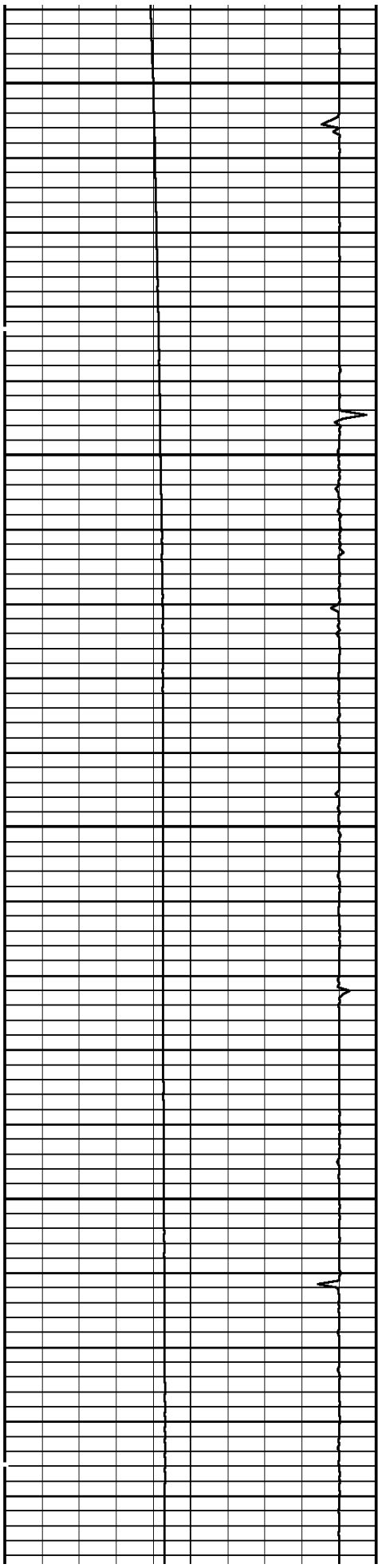
VERSION: 143R 2.0b"

MAIN PASS

190678 TEMPMAIN

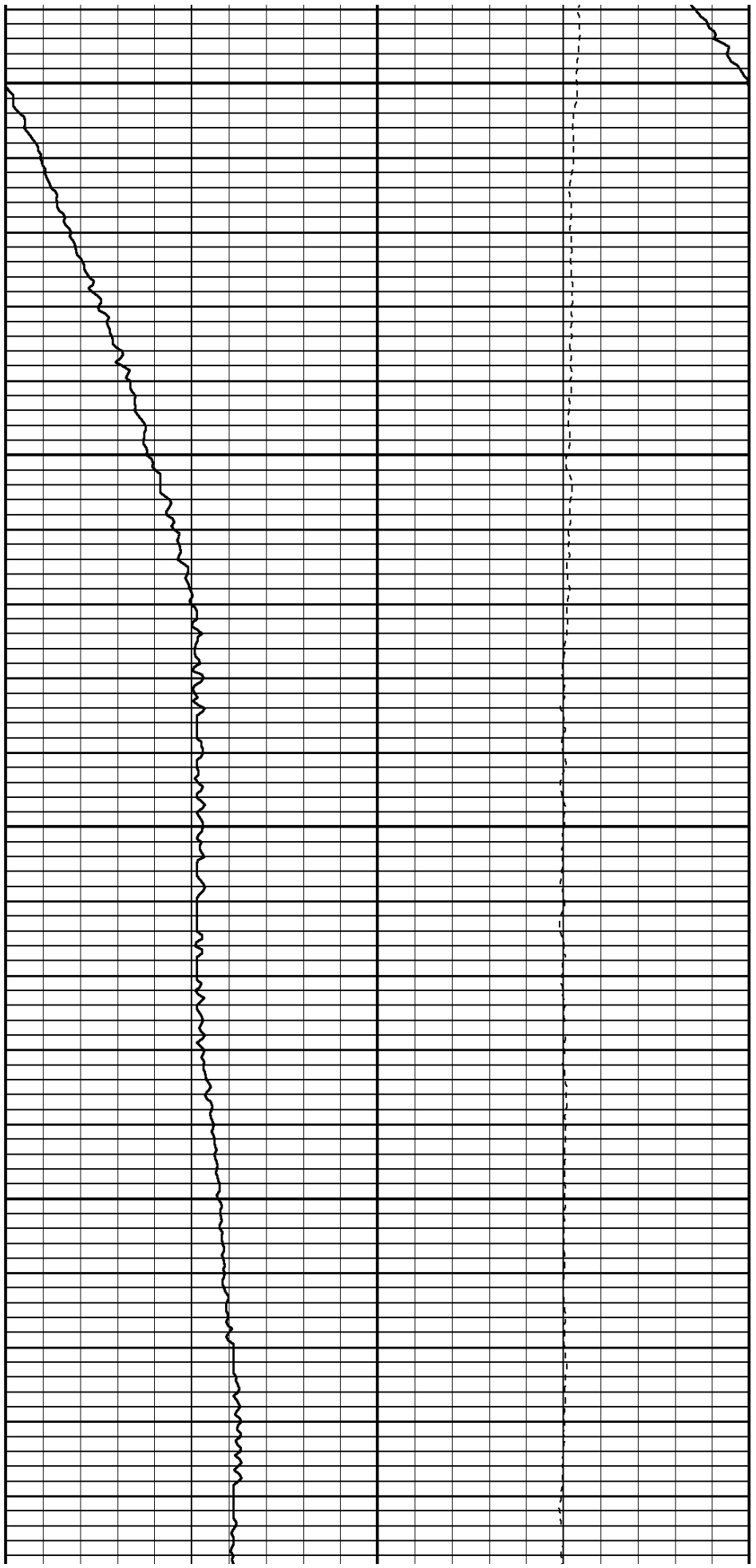
FINISH DEPTH: 26.8 Feet DIRECTION: UP DATE: 10/05/2012 TIME: 22:29 MODE: TRACE PLAYBACK

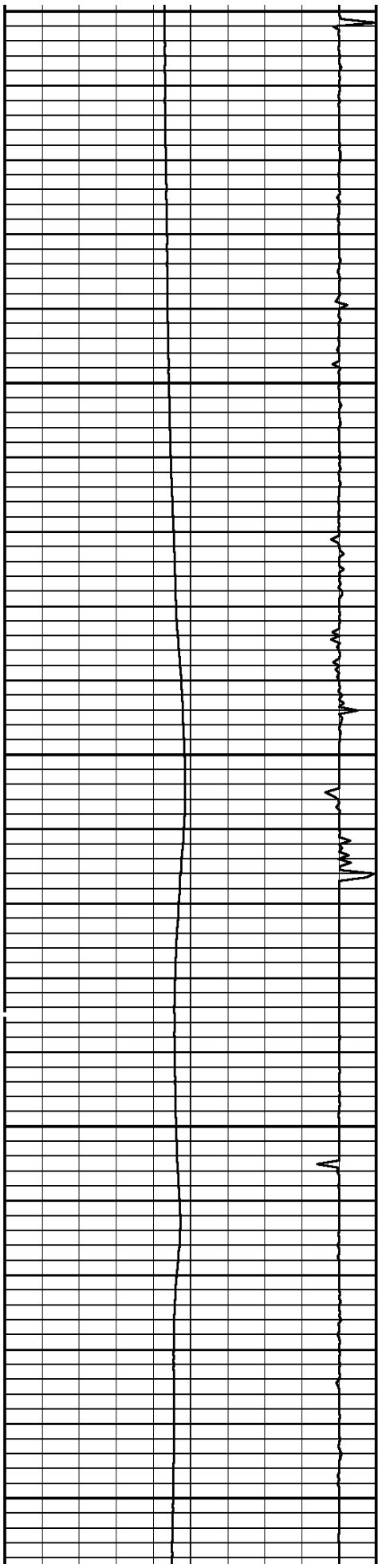




200

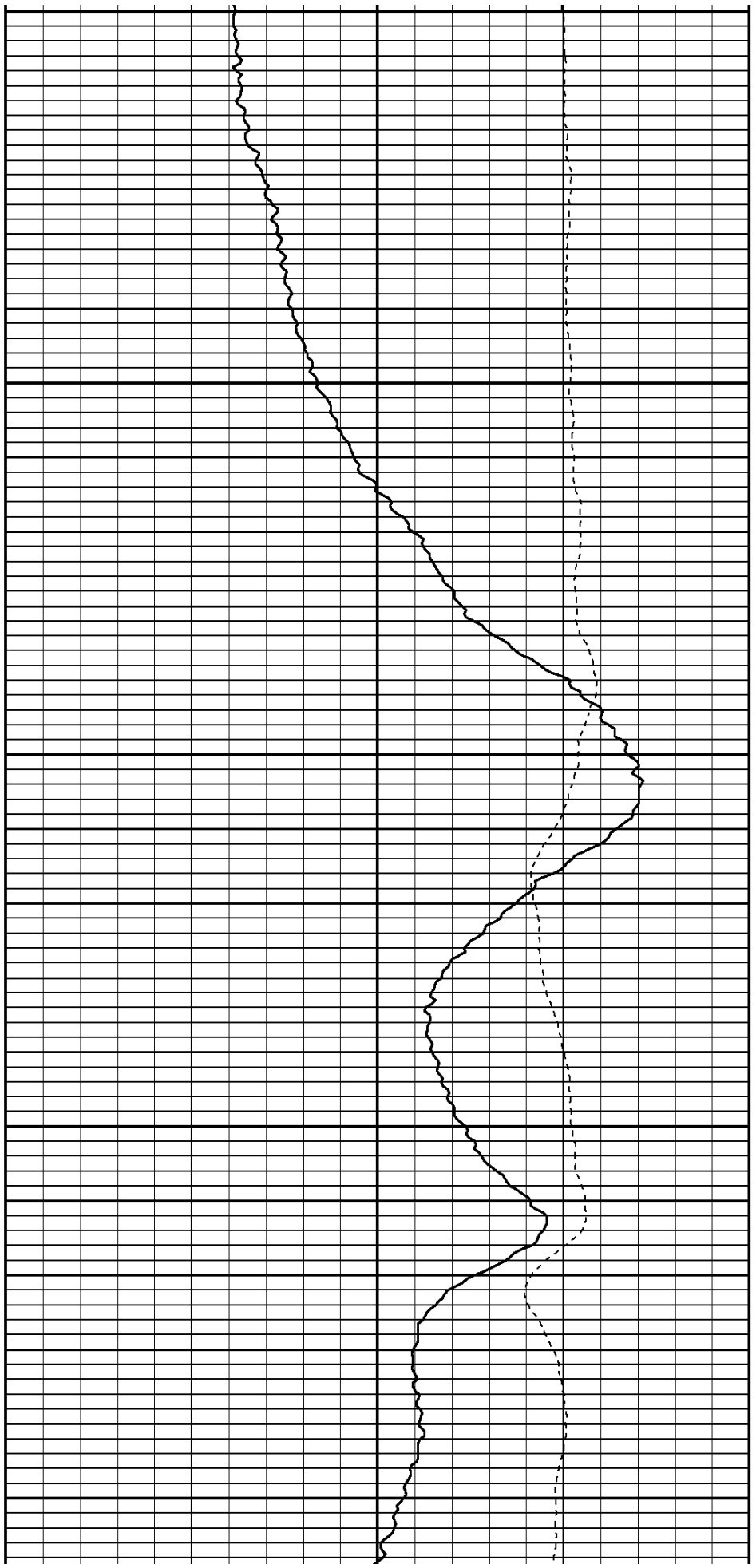
300

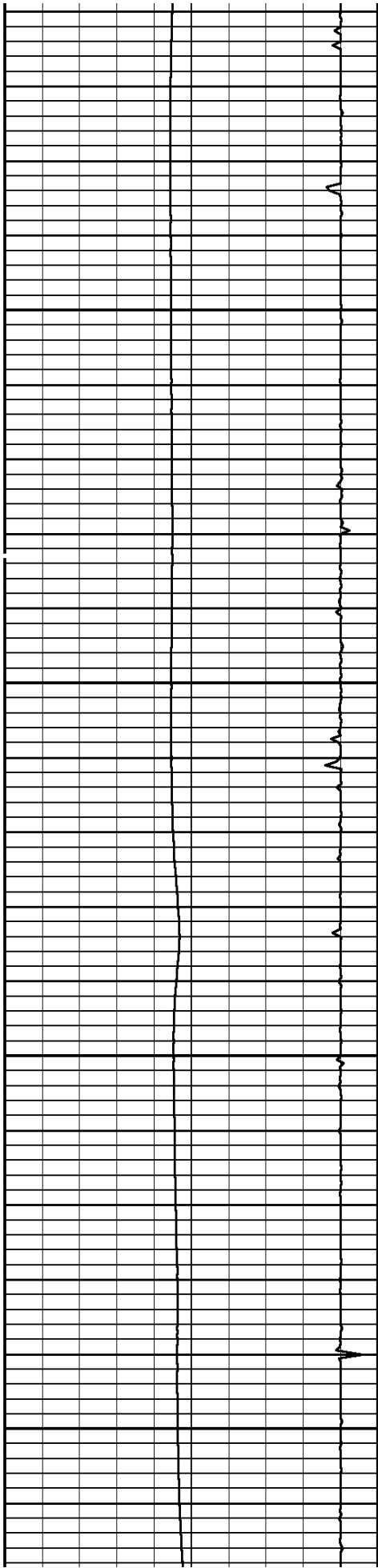




400

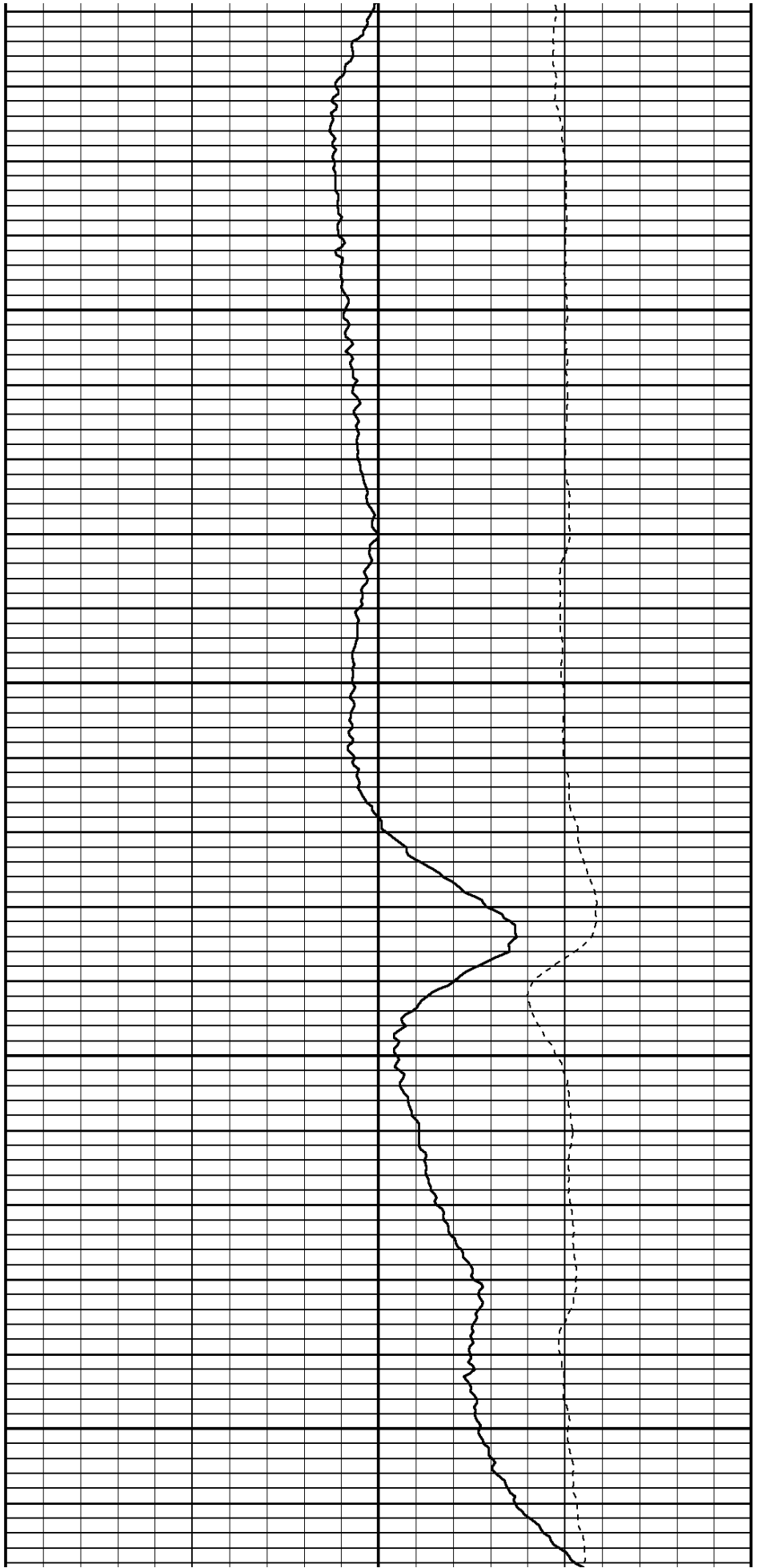
500

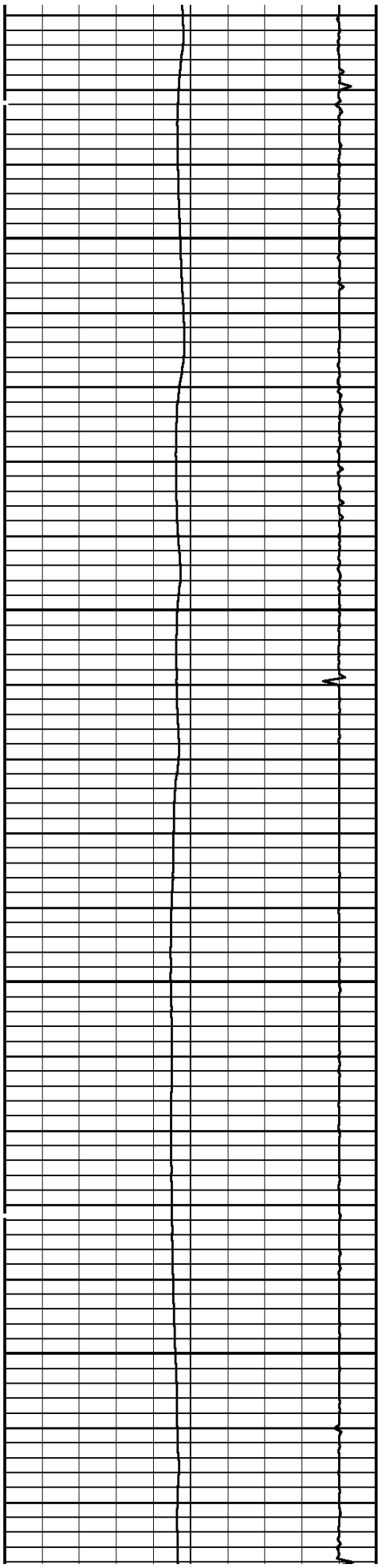




600

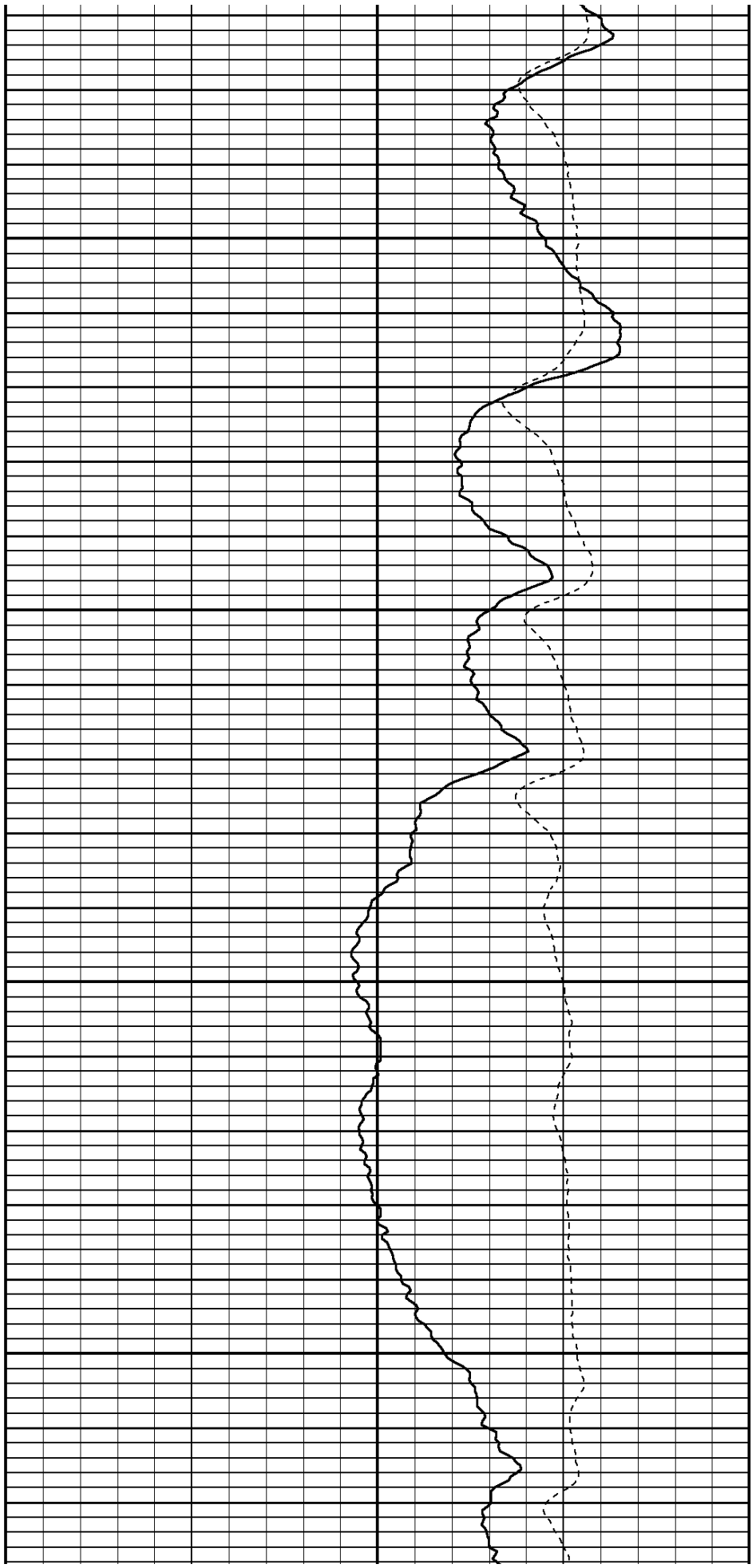
700

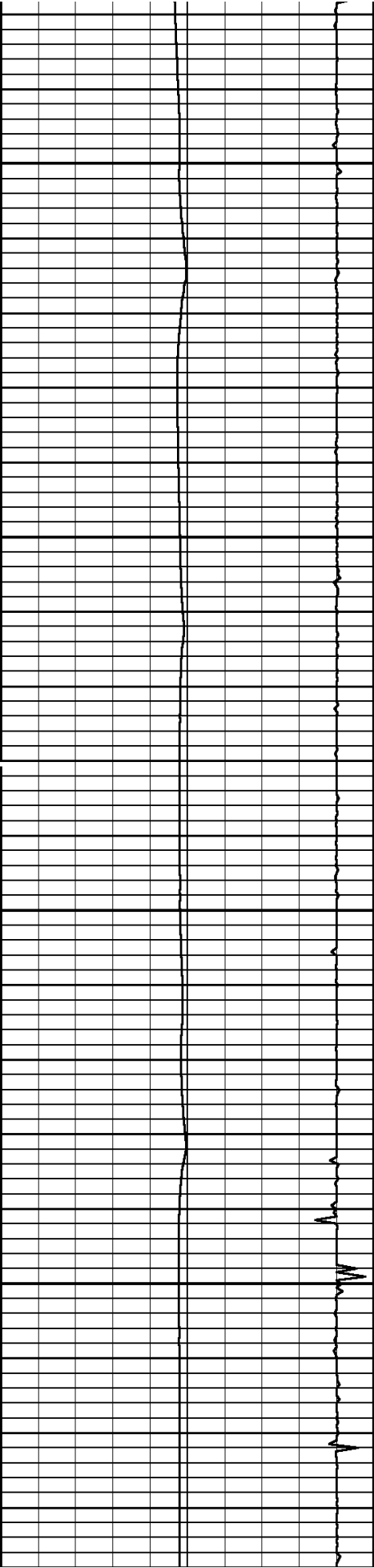




800

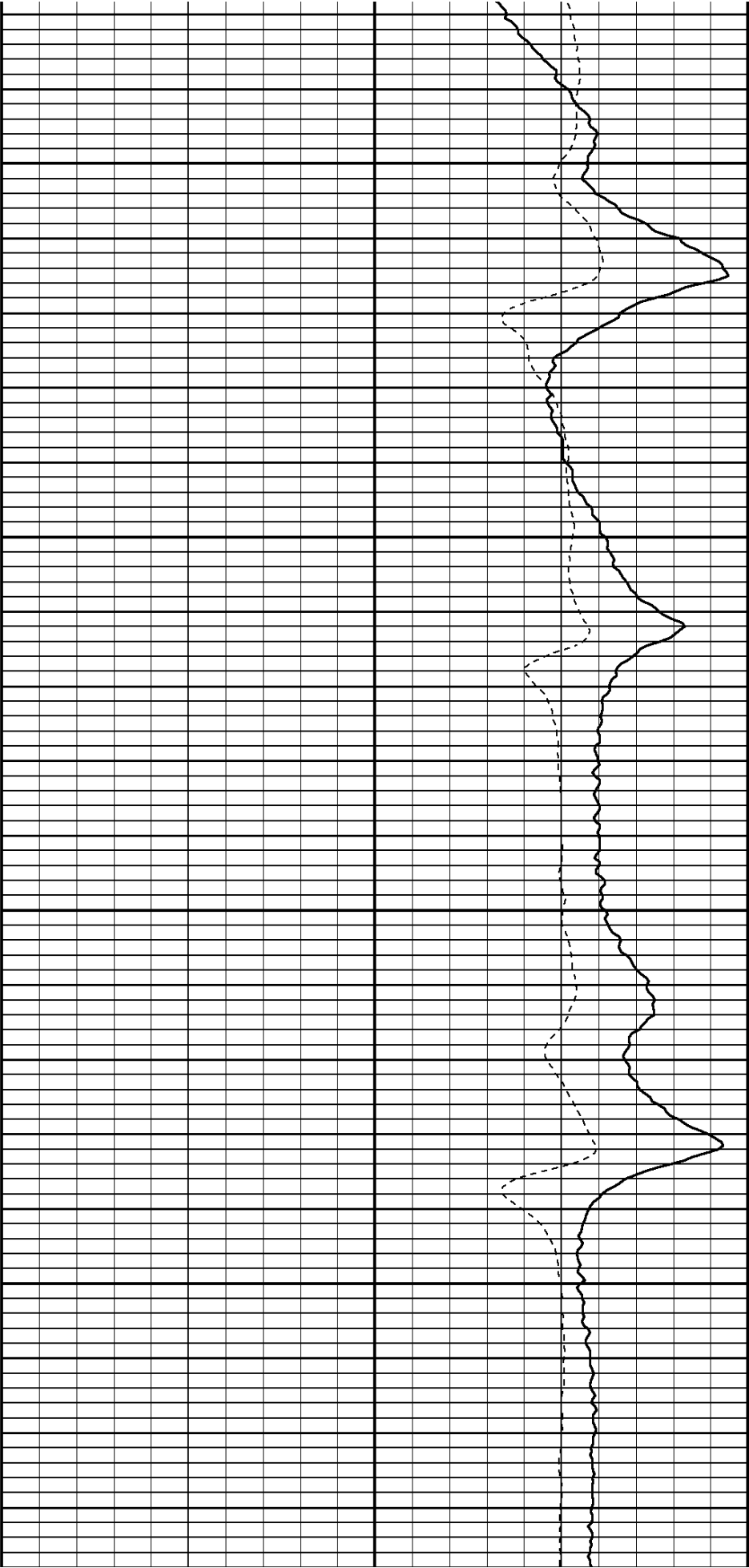
900

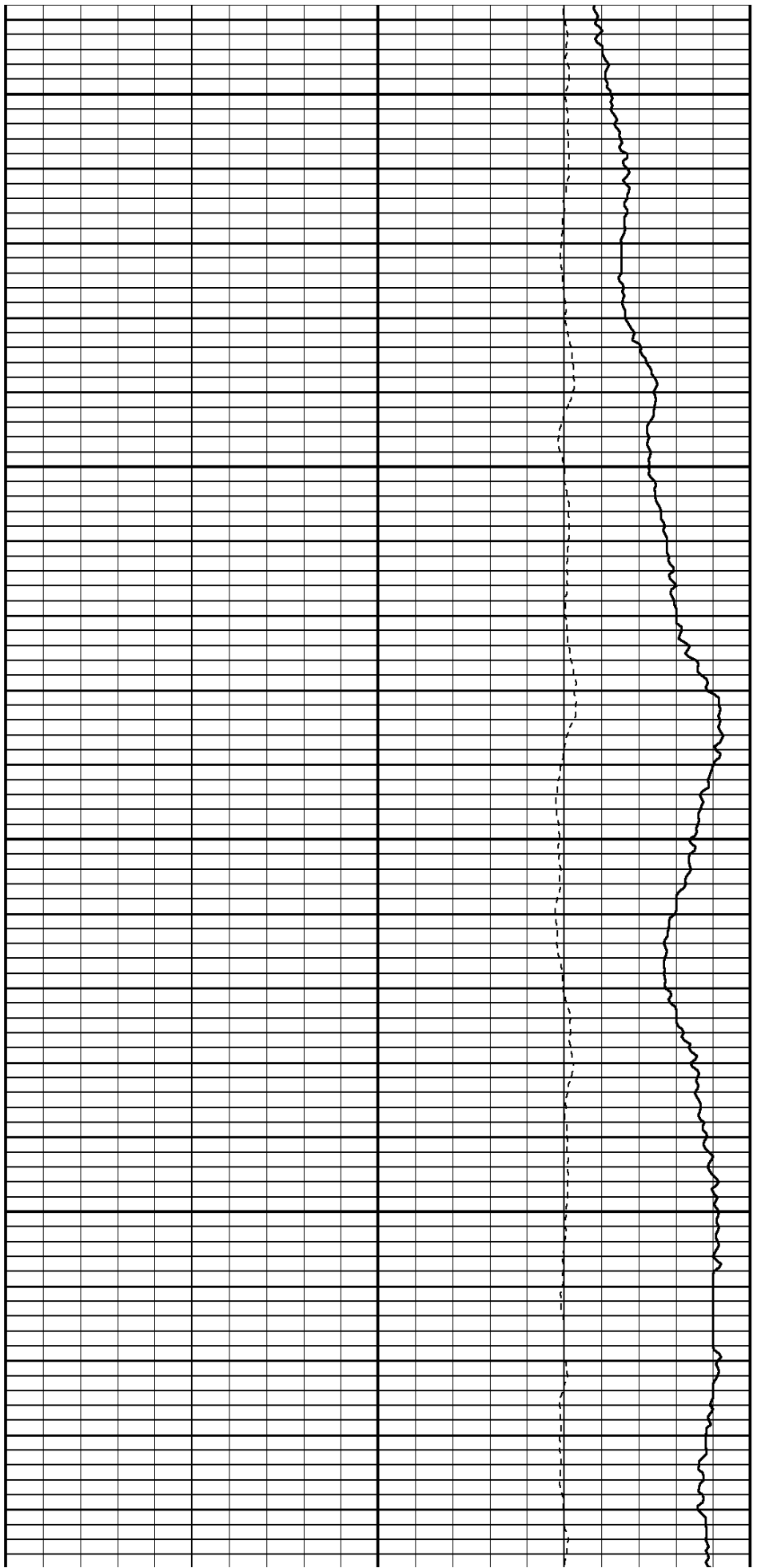
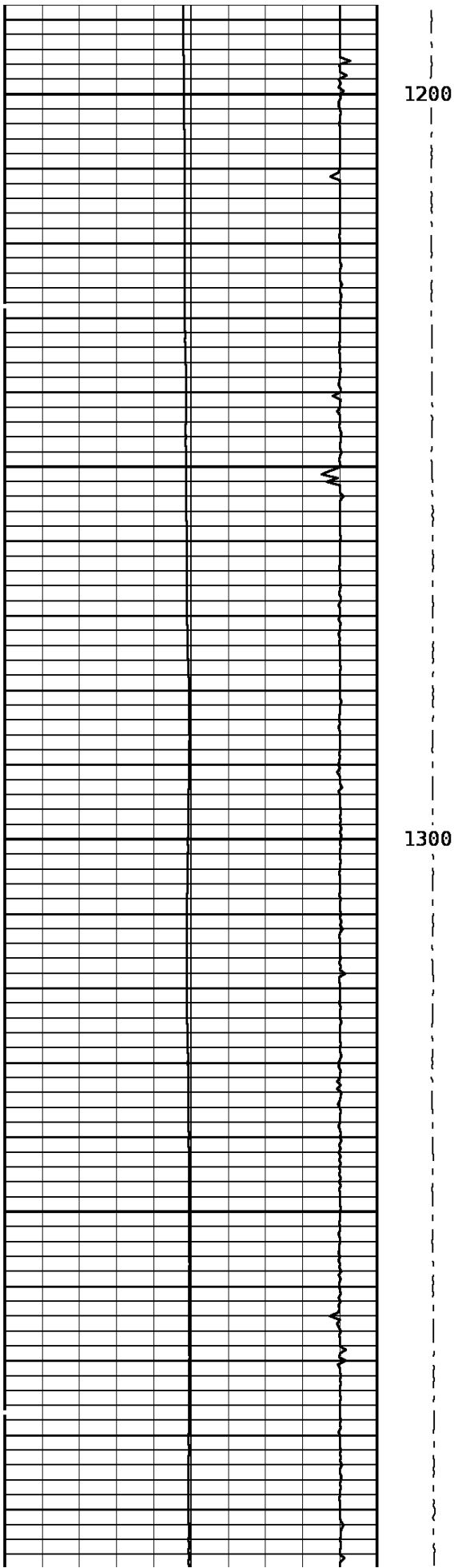




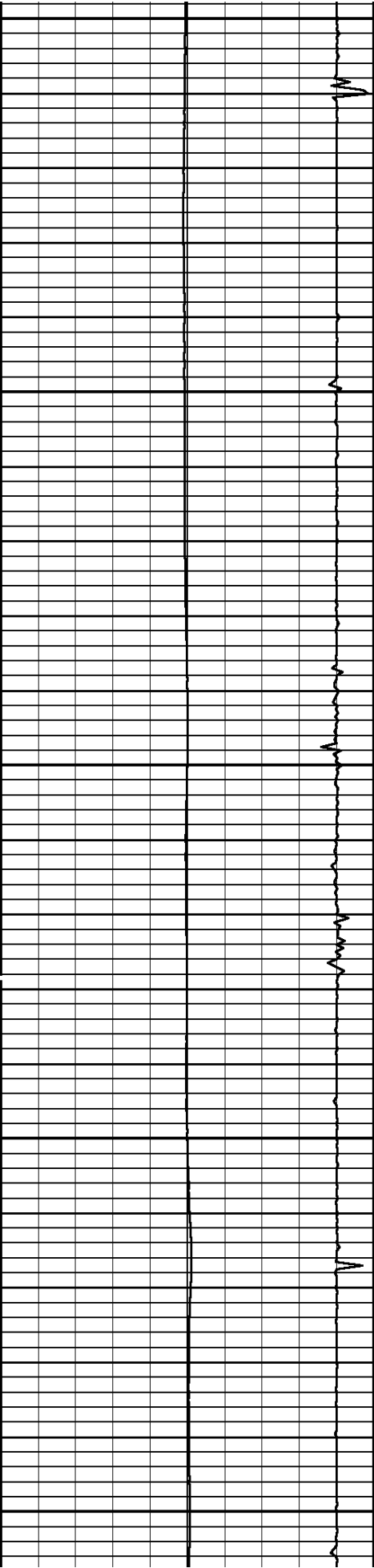
1000

1100





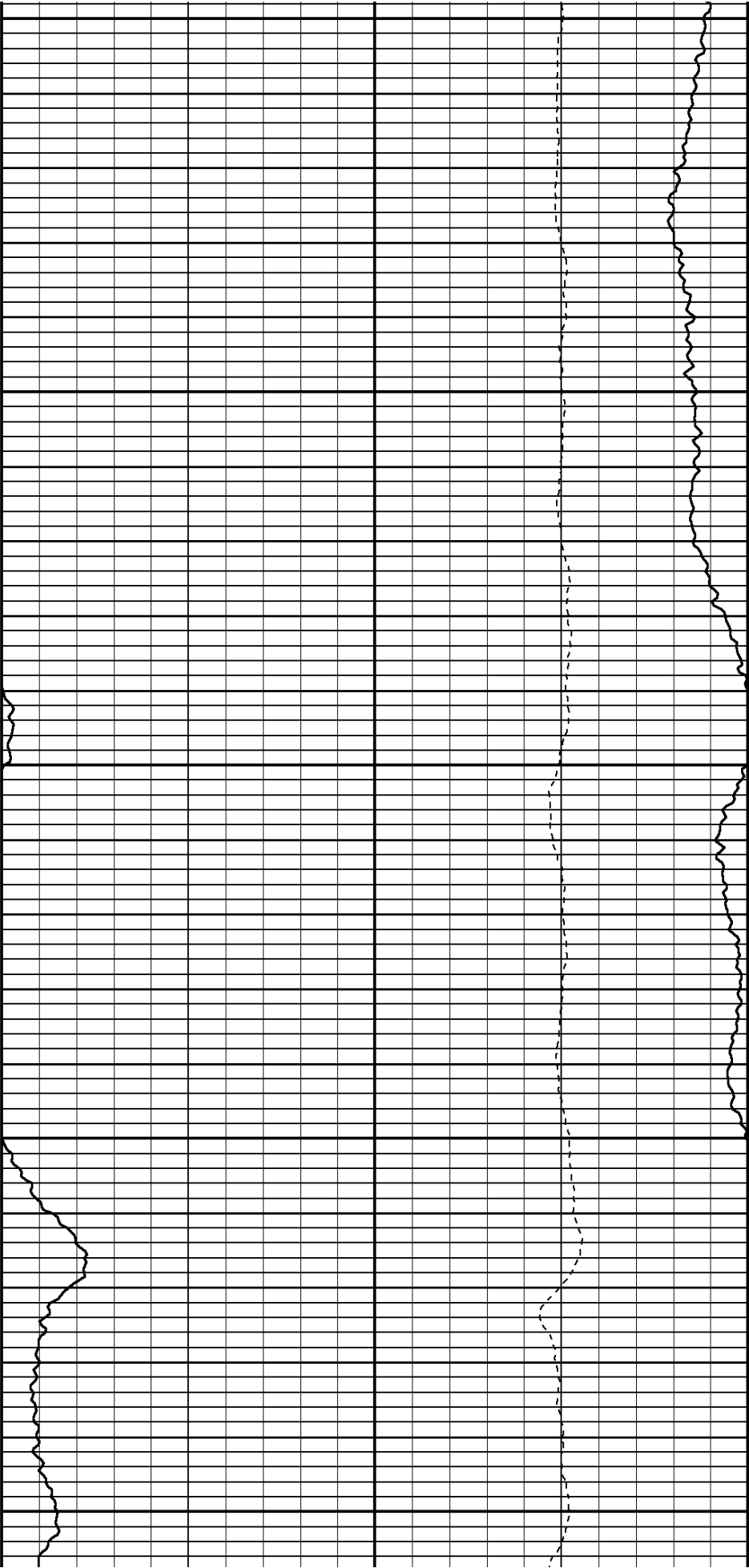


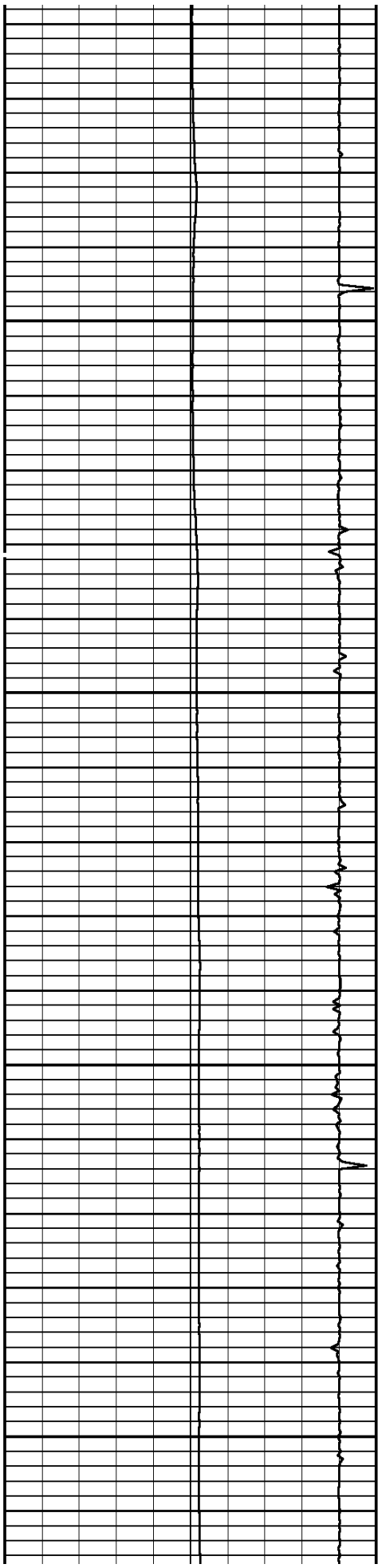


1400

1500

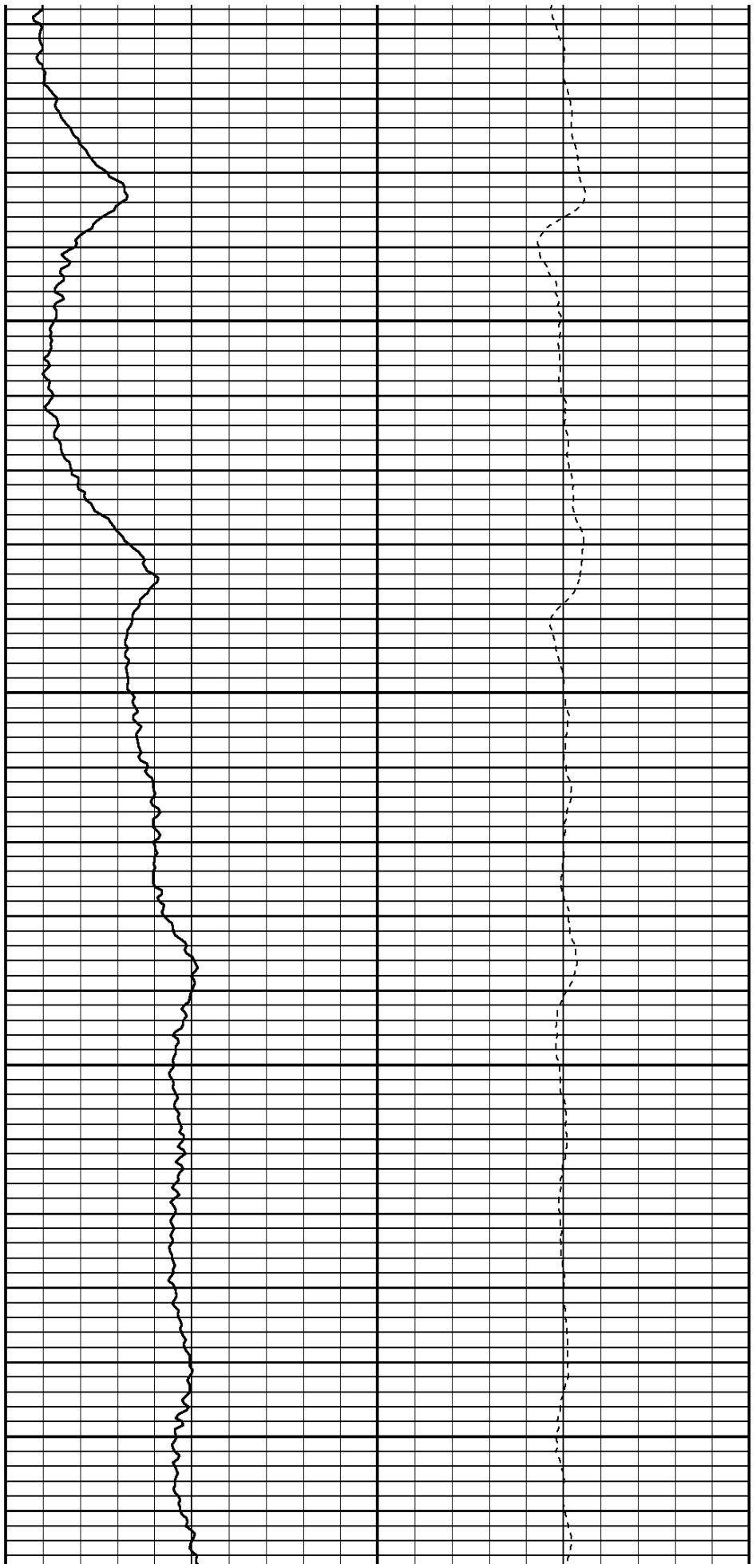
1600

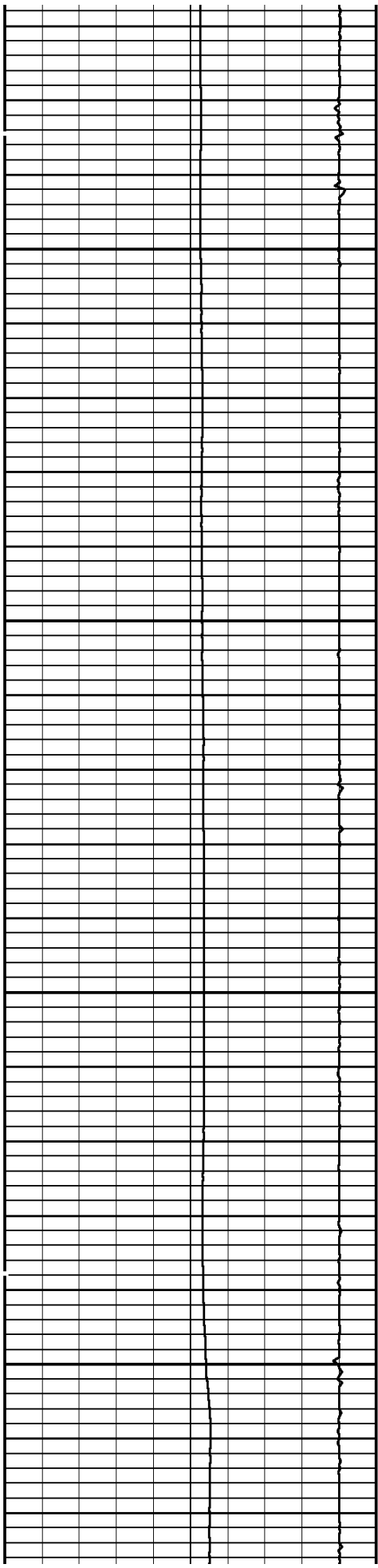




1700

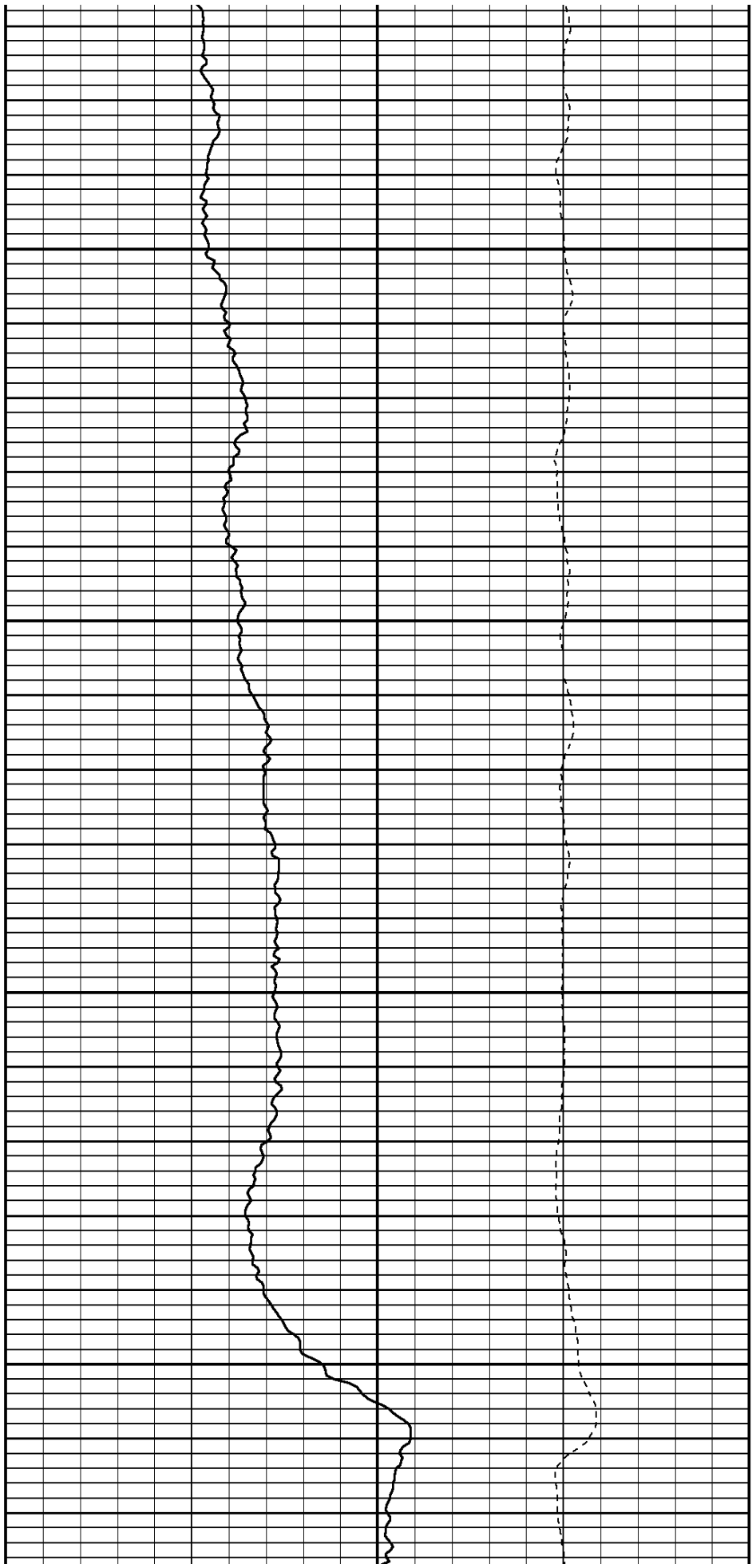
1800

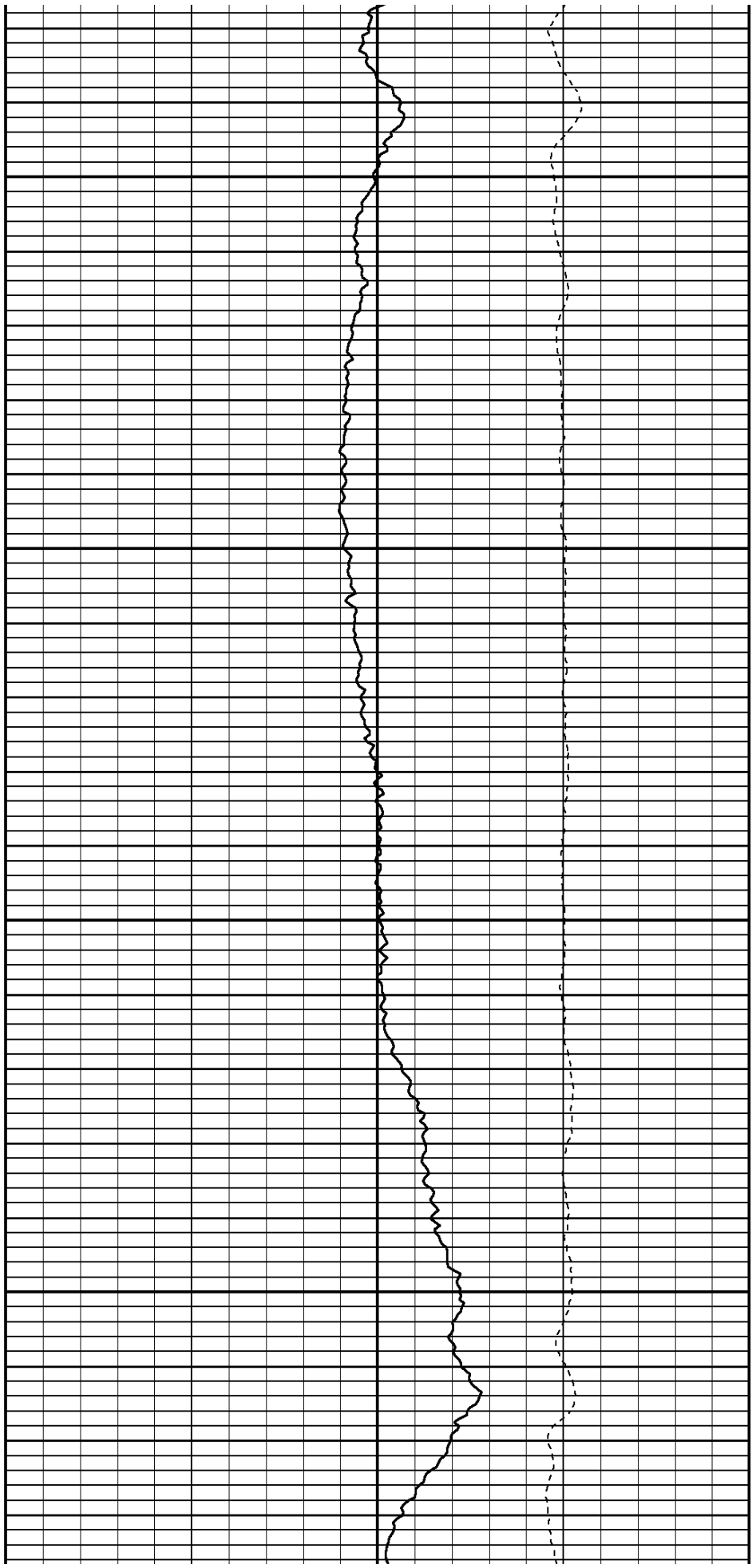
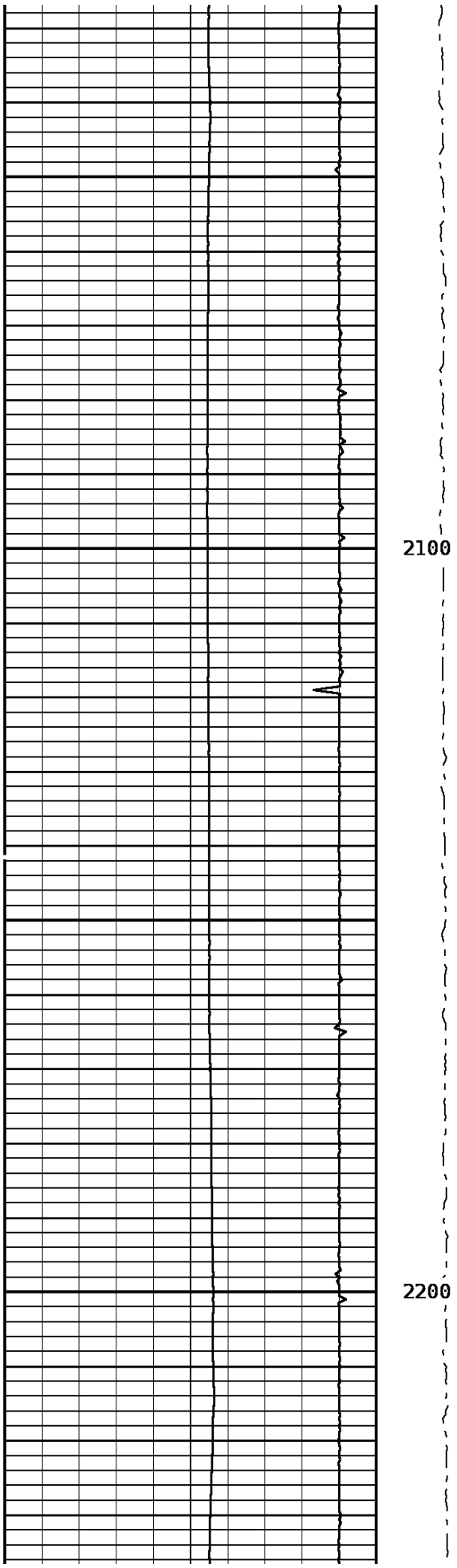


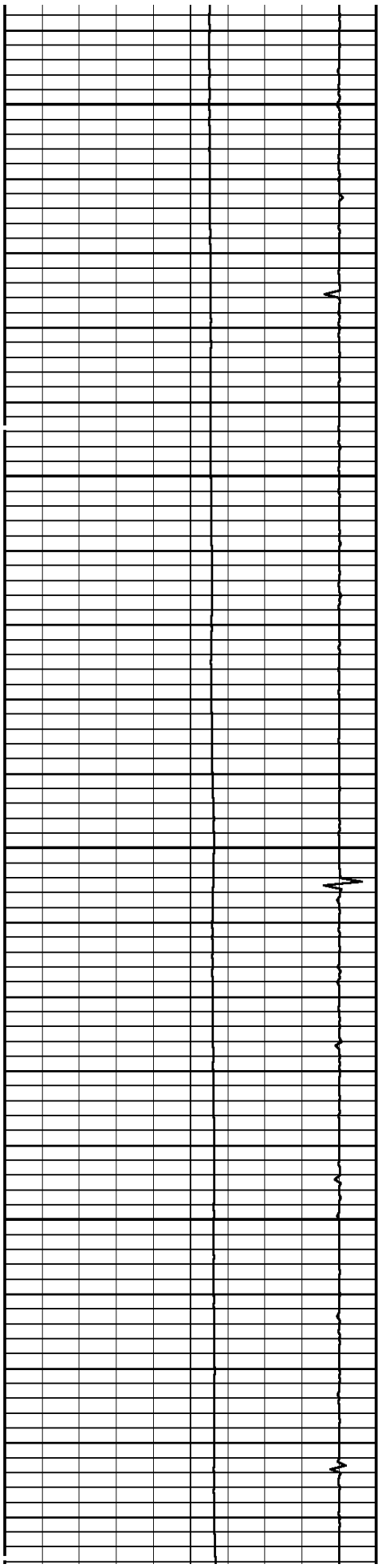


1900

2000

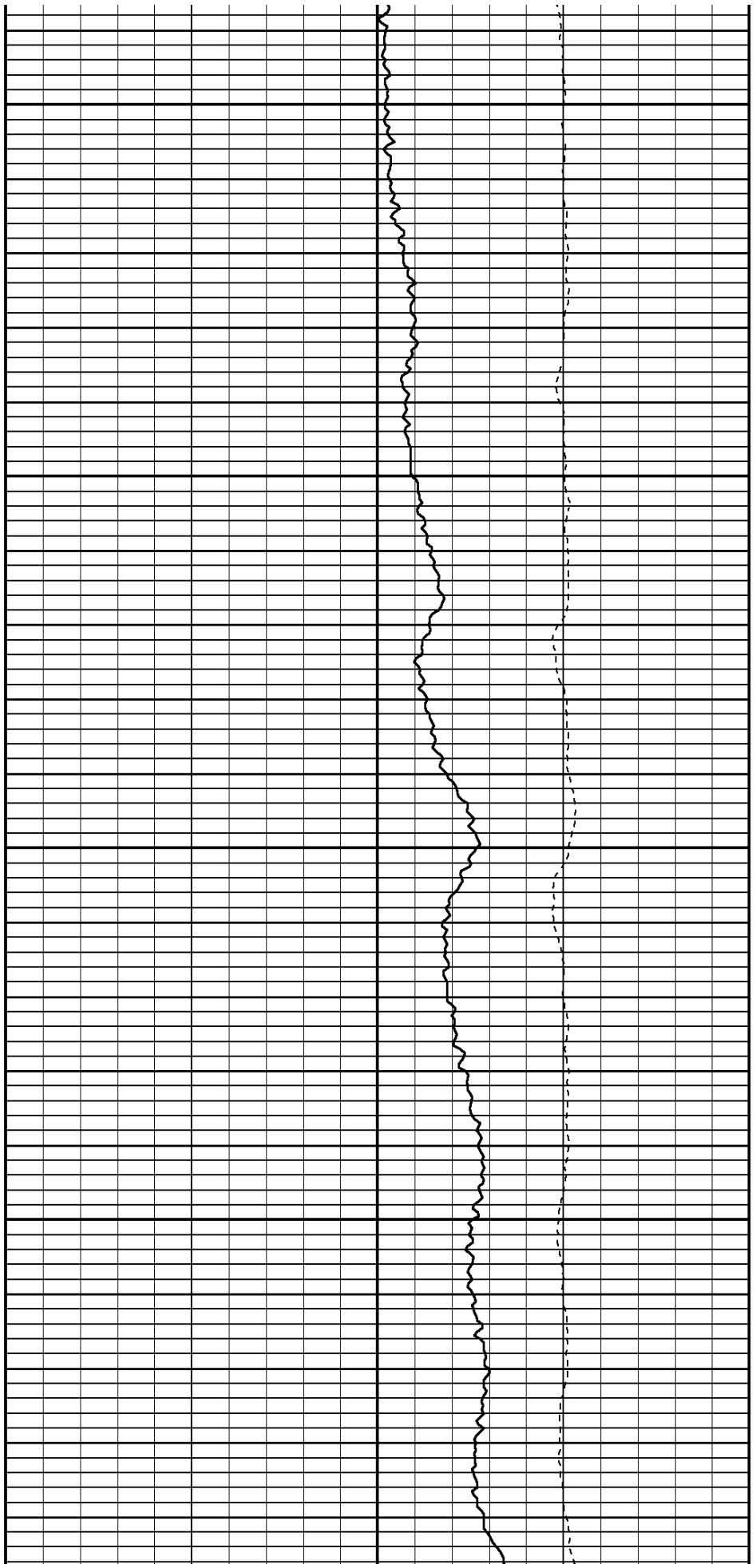


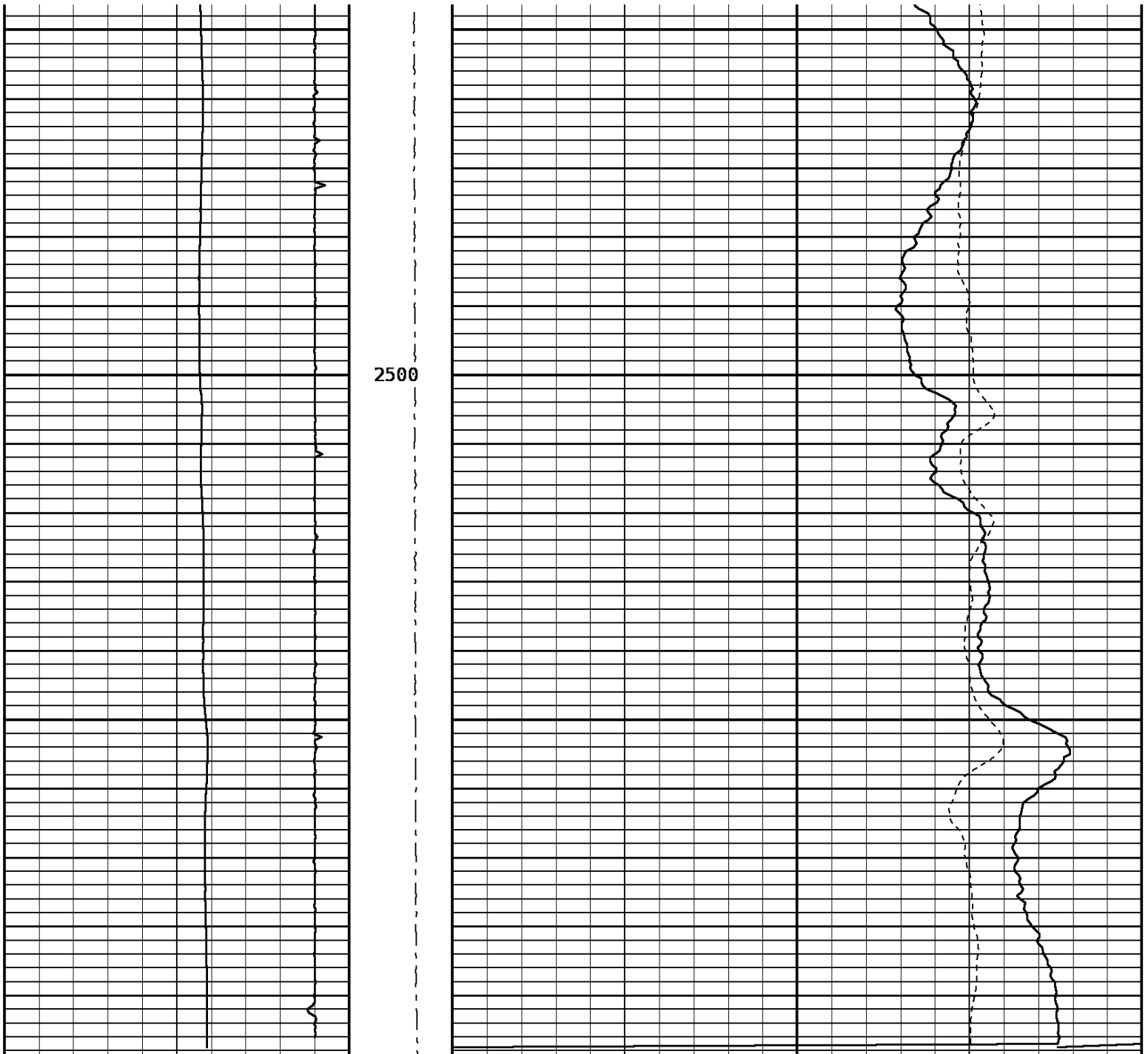




2300

2400





Temperature			Tension		Amp. Temperature		
0.0	DegreesFarenheit	200.0	-200	800	0.0	DegreesFarenheit	20.0
Collar Locator						Delta Temperature	
-8000	Millivolts	880				-1.500	DegF/Foot 1.500

**Cased Hole Cablehead**

Weight 2.2 LBS.  
Length 1.0 FT.  
Max. Diameter 1.44 IN.

Total Stack Weight 64.5 LBS in air  
Total Stack Length 12.29 FT.

**Sinker Bar**

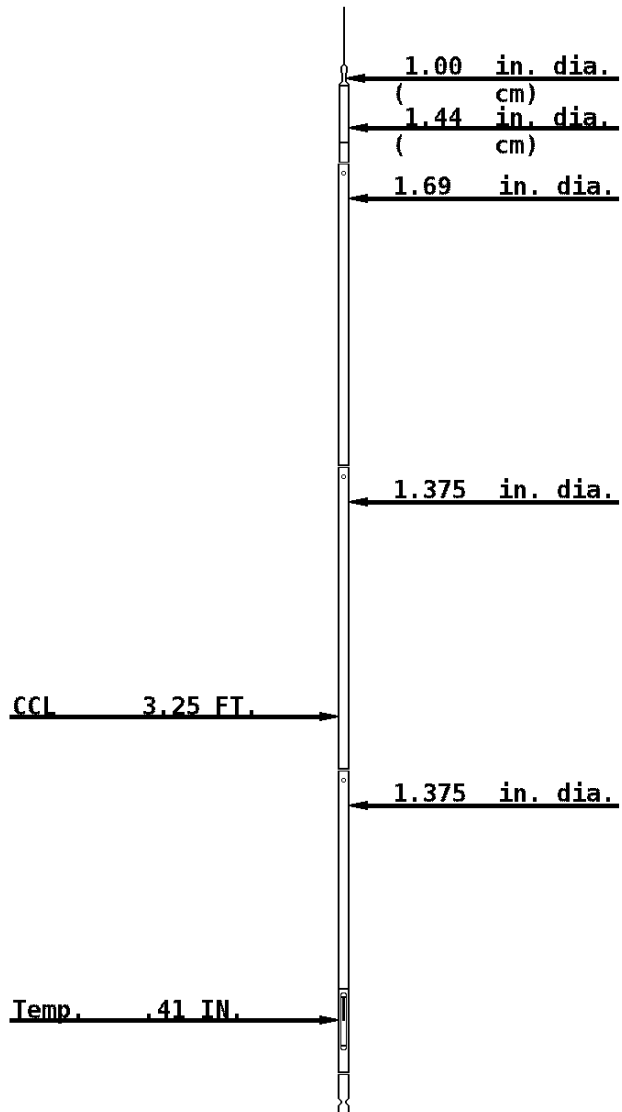
Weight 49 LBS.  
Length 7.0 FT.  
Max. Diameter 1.69 IN.

**Casing Collar Locator**

Weight 3.1 LBS.  
Length 1.79 FT.  
Max. Diameter 1.375 IN.

**Temperature**

Weight 10.2 LBS  
Length 2.5 FT.  
Max. Diameter 1.375 IN.



COMPANY SG INTERESTS

WELL ECK 12-90-1 #1

FIELD BULL MOUNTAIN

COUNTY GUNNINSON

STATE COLORADO



**Weatherford®**

