

# LOCATION DRAWING

VEGETATION:  
WINTER WHEAT

SURFACE USE:  
AGRICULTURAL

## REFERENCE POINT

LATITUDE: 39.76708

LONGITUDE: -104.56047

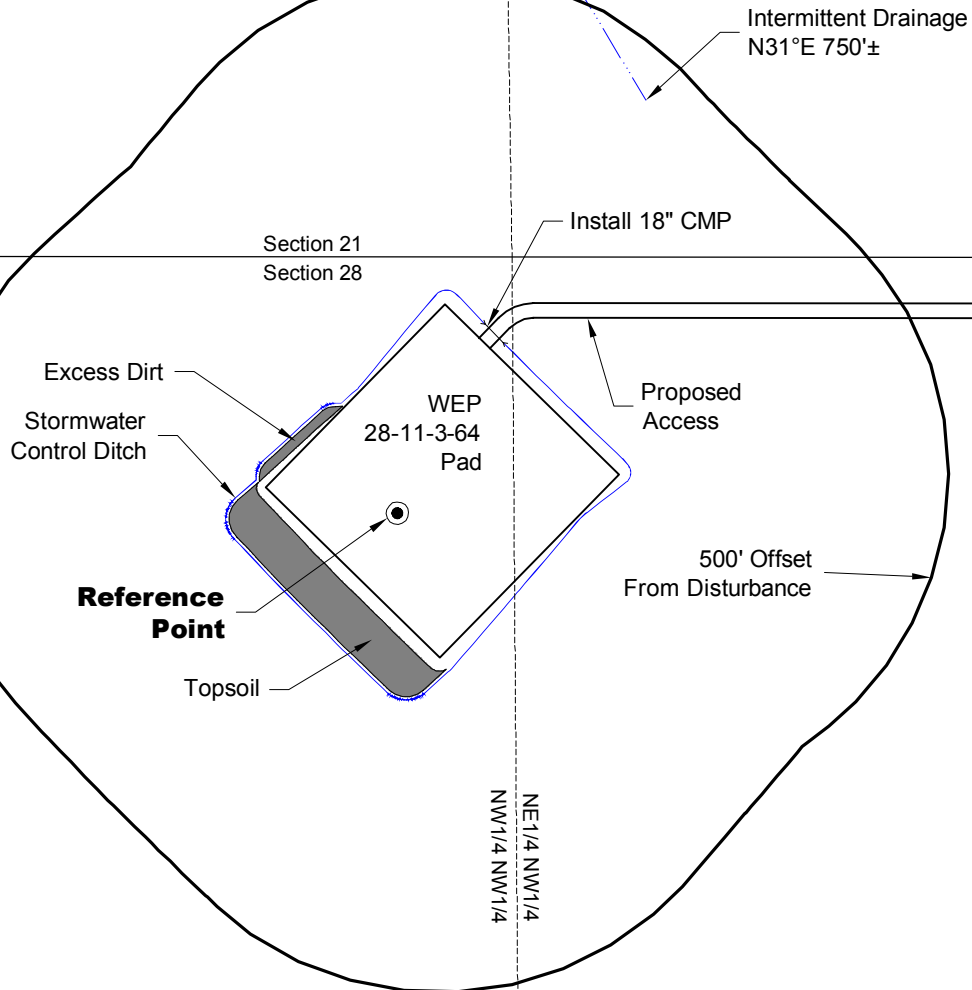
FOOTAGE: 400 FNL 1134 FWL

GROUND ELEVATION: 5580.3

PDOP: 1.6 DATE: 5/11/2012

INSTRUMENT OPERATOR:

MARC WOODARD



**Reference Point**

Section 21  
Section 28

WEP  
28-11-3-64  
Pad

Install 18" CMP

Proposed Access

500' Offset  
From Disturbance

NE 1/4 NW 1/4  
NW 1/4 NW 1/4

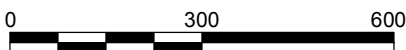
NOTE:  
ALL PRODUCTION FACILITIES WILL BE ON PAD.

DISTURBANCE ACREAGE:  
5.1± DRILLING OPERATIONS  
1.0± INTERIM RECLAIM

10/1/12



North



Graphic Scale in Feet  
1" = 300'



LAND SURVEYING AND MAPPING  
LAFAYETTE - WINTER PARK  
Ph 303 666 0379 Fx 303 665 6320

**CARRIZO OIL & GAS, INC**  
WEP 28-11-3-64 PAD

**NW 1/4 NW 1/4 SECTION 28 T3S R64W**  
**6th PM ADAMS COUNTY COLORADO**