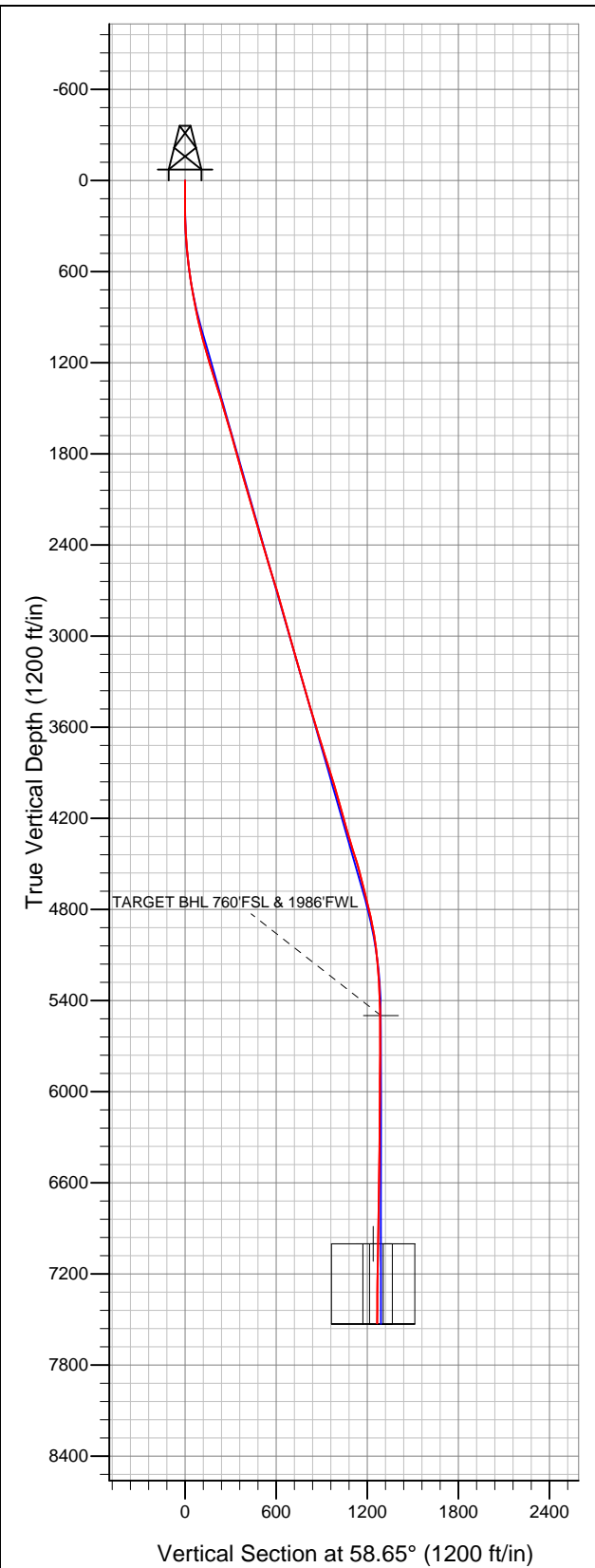


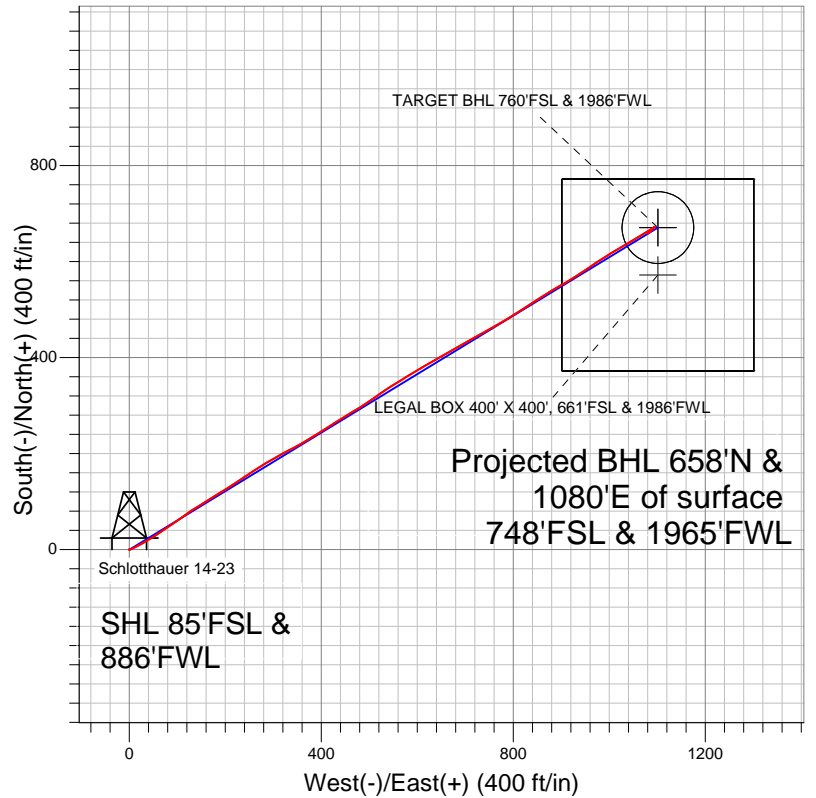
Well Name: Schlotthauer 14-23

Surface Location: Schlotthauer 13-23 Pad Sec.23-T7N-R67W
North American Datum 1983 US State Plane 1983Colorado Northern Zone
Ground Elevation: 4966.0

+N/-S	+E/-W	Northing	Easting	Latitude	Longitude	Slot
0.0	0.0	1444798.14	3175970.29	40.552646	-104.866742	
		Original Well Elev	WELL @ 4977.0ft (Original Well Elev)			



BAYSWATER EXPLORATION & PRODUCTION



LEGEND

- Survey #1
- ◇ Schlotthauer 14-23, Wellbore #1, Plan #2 (3-23-12) R V0
- Wellbore #1

Final Survey Plot

Projected Final Survey -
7700'MD & 7528'TVD @ 1265'VS
0.40 deg Inc 207.70 deg AZ

Project: SEC.23-T7N-R67W
Site: Schlotthauer 13-23 Pad Sec.23-T7N-R67W
Well: Schlotthauer 14-23
Plan: Wellbore #1



BAYSWATER EXPLORATION & PRODUCTION

SEC.23-T7N-R67W

Schlotthauer 13-23 Pad Sec.23-T7N-R67W

Schlotthauer 14-23

Wellbore #1

Survey: Survey #1

Standard Survey Report

02 April, 2012

Company:	BAYSWATER EXPLORATION & PRODUCTION	Local Co-ordinate Reference:	Well Schlotthauer 14-23
Project:	SEC.23-T7N-R67W	TVD Reference:	WELL @ 4977.0ft (Original Well Elev)
Site:	Schlotthauer 13-23 Pad Sec.23-T7N-R67W	MD Reference:	WELL @ 4977.0ft (Original Well Elev)
Well:	Schlotthauer 14-23	North Reference:	True
Wellbore:	Wellbore #1	Survey Calculation Method:	Minimum Curvature
Design:	Wellbore #1	Database:	Landmark

Project	SEC.23-T7N-R67W, Weld County, CO		
Map System:	US State Plane 1983	System Datum:	Mean Sea Level
Geo Datum:	North American Datum 1983		Using Well Reference Point
Map Zone:	Colorado Northern Zone		Using geodetic scale factor

Site		Schlotthauer 13-23 Pad Sec.23-T7N-R67W			
Site Position:		Northing:	1,444,798.08ft	Latitude:	40.552646
From:	Lat/Long	Easting:	3,175,955.28ft	Longitude:	-104.866796
Position Uncertainty:	0.0 ft	Slot Radius:	"	Grid Convergence:	0.41 °

Well		Schlotthauer 14-23				
Well Position	+N-S	0.0 ft	Northing:	1,444,798.14 ft	Latitude:	40.552646
	+E-W	0.0 ft	Easting:	3,175,970.29 ft	Longitude:	-104.866742
Position Uncertainty		0.0 ft	Wellhead Elevation:	ft	Ground Level:	4,966.0 ft

Wellbore	Wellbore #1				
Magnetics	Model Name	Sample Date	Declination (°)	Dip Angle (°)	Field Strength (nT)
	IGRF2010	3/23/2012	8.83	67.13	53,118

Design	Wellbore #1				
Audit Notes:					
Version:	1.0	Phase:	ACTUAL	Tie On Depth:	0.0
Vertical Section:	Depth From (TVD) (ft)	+N/-S (ft)	+E/-W (ft)	Direction (°)	
	5,500.0	0.0	0.0	58.65	

Survey Program		Date	4/2/2012	
From (ft)	To (ft)	Survey (Wellbore)	Tool Name	Description
98.0	7,700.0	Survey #1 (Wellbore #1)	MWD	MWD - Standard

Survey	Survey Data									
	Measured Depth (ft)	Inclination (°)	Azimuth (°)	Vertical Depth (ft)	+N/-S (ft)	+E/-W (ft)	Vertical Section (ft)	Dogleg Rate (°/100ft)	Build Rate (°/100ft)	Turn Rate (°/100ft)
	0.0	0.00	0.00	0.0	0.0	0.0	0.0	0.00	0.00	0.00
	98.0	0.70	192.00	98.0	-0.6	-0.1	-0.4	0.71	0.71	0.00
	187.0	0.60	48.70	187.0	-0.8	0.1	-0.3	1.39	-0.11	-161.01
	277.0	1.70	62.60	277.0	0.1	1.7	1.5	1.25	1.22	15.44
	368.0	3.30	63.10	367.9	1.9	5.2	5.4	1.76	1.76	0.55
	459.0	5.10	62.20	458.6	5.0	11.1	12.1	1.98	1.98	-0.99
	550.0	6.90	65.80	549.1	9.1	19.7	21.5	2.02	1.98	3.96
	641.0	8.50	61.60	639.3	14.6	30.6	33.7	1.86	1.76	-4.62
	727.0	9.80	56.30	724.2	21.6	42.2	47.3	1.80	1.51	-6.16
	768.0	10.20	57.60	764.6	25.5	48.2	54.5	1.12	0.98	3.17
	862.0	11.30	56.00	856.9	35.1	62.9	72.0	1.21	1.17	-1.70
	955.0	13.40	57.40	947.8	46.0	79.5	91.9	2.28	2.26	1.51

Company:	BAYSWATER EXPLORATION & PRODUCTION	Local Co-ordinate Reference:	Well Schlotthauer 14-23
Project:	SEC.23-T7N-R67W	TVD Reference:	WELL @ 4977.0ft (Original Well Elev)
Site:	Schlotthauer 13-23 Pad Sec.23-T7N-R67W	MD Reference:	WELL @ 4977.0ft (Original Well Elev)
Well:	Schlotthauer 14-23	North Reference:	True
Wellbore:	Wellbore #1	Survey Calculation Method:	Minimum Curvature
Design:	Wellbore #1	Database:	Landmark

Survey									
Measured Depth (ft)	Inclination (°)	Azimuth (°)	Vertical Depth (ft)	+N/-S (ft)	+E/-W (ft)	Vertical Section (ft)	Dogleg Rate (°/100ft)	Build Rate (°/100ft)	Turn Rate (°/100ft)
1,049.0	15.00	54.00	1,038.9	59.1	98.5	114.9	1.92	1.70	-3.62
1,143.0	15.90	54.30	1,129.5	73.7	118.8	139.8	0.96	0.96	0.32
1,237.0	16.90	57.70	1,219.7	88.5	140.8	166.3	1.47	1.06	3.62
1,330.0	17.10	59.00	1,308.6	102.8	164.0	193.5	0.46	0.22	1.40
1,424.0	17.70	58.20	1,398.3	117.5	188.0	221.6	0.69	0.64	-0.85
1,518.0	16.70	57.00	1,488.1	132.3	211.4	249.4	1.13	-1.06	-1.28
1,611.0	16.60	55.40	1,577.2	147.2	233.6	276.0	0.50	-0.11	-1.72
1,705.0	15.70	57.50	1,667.5	161.6	255.4	302.2	1.14	-0.96	2.23
1,799.0	15.90	57.50	1,758.0	175.4	277.0	327.8	0.21	0.21	0.00
1,892.0	16.20	60.90	1,847.3	188.5	299.0	353.5	1.06	0.32	3.66
1,986.0	15.70	60.90	1,937.7	201.1	321.6	379.3	0.53	-0.53	0.00
2,080.0	15.30	63.80	2,028.3	212.7	343.8	404.3	0.93	-0.43	3.09
2,173.0	15.90	59.10	2,117.9	224.7	365.8	429.3	1.50	0.65	-5.05
2,267.0	16.40	56.70	2,208.2	238.6	387.9	455.4	0.89	0.53	-2.55
2,361.0	16.90	56.90	2,298.2	253.4	410.5	482.3	0.54	0.53	0.21
2,454.0	17.10	59.40	2,387.2	267.7	433.6	509.5	0.81	0.22	2.69
2,548.0	16.00	60.30	2,477.3	281.1	456.7	536.3	1.20	-1.17	0.96
2,642.0	16.90	56.60	2,567.4	295.1	479.4	562.9	1.47	0.96	-3.94
2,736.0	17.50	55.20	2,657.2	310.7	502.4	590.7	0.78	0.64	-1.49
2,829.0	16.30	54.60	2,746.2	326.2	524.5	617.6	1.30	-1.29	-0.65
2,923.0	15.30	58.30	2,836.7	340.4	545.8	643.2	1.51	-1.06	3.94
3,017.0	15.30	58.80	2,927.3	353.3	567.0	668.0	0.14	0.00	0.53
3,110.0	16.30	57.70	3,016.8	366.6	588.5	693.3	1.12	1.08	-1.18
3,204.0	15.80	60.60	3,107.1	380.0	610.8	719.3	1.01	-0.53	3.09
3,298.0	15.80	59.90	3,197.6	392.7	633.0	744.9	0.20	0.00	-0.74
3,391.0	16.40	59.50	3,286.9	405.7	655.3	770.7	0.66	0.65	-0.43
3,485.0	16.10	60.70	3,377.2	418.8	678.1	797.0	0.48	-0.32	1.28
3,579.0	16.60	61.30	3,467.4	431.6	701.2	823.4	0.56	0.53	0.64
3,672.0	16.50	59.70	3,556.5	444.7	724.3	849.9	0.50	-0.11	-1.72
3,766.0	17.30	61.50	3,646.5	458.1	748.1	877.2	1.02	0.85	1.91
3,860.0	16.80	60.00	3,736.3	471.5	772.1	904.7	0.71	-0.53	-1.60
3,954.0	17.90	57.50	3,826.1	486.1	796.1	932.8	1.41	1.17	-2.66
4,047.0	17.80	57.20	3,914.6	501.5	820.1	961.3	0.15	-0.11	-0.32
4,141.0	15.50	56.60	4,004.6	516.2	842.7	988.2	2.45	-2.45	-0.64
4,235.0	16.00	59.00	4,095.1	529.8	864.2	1,013.7	0.87	0.53	2.55
4,328.0	15.10	58.90	4,184.7	542.6	885.6	1,038.6	0.97	-0.97	-0.11
4,422.0	17.00	60.40	4,275.0	555.7	908.0	1,064.6	2.07	2.02	1.60
4,516.0	17.10	57.10	4,364.9	570.0	931.6	1,092.1	1.03	0.11	-3.51
4,609.0	17.30	56.20	4,453.8	585.1	954.6	1,119.6	0.36	0.22	-0.97
4,703.0	14.40	55.30	4,544.2	599.6	975.8	1,145.3	3.10	-3.09	-0.96
4,797.0	14.50	58.20	4,635.2	612.4	995.4	1,168.7	0.78	0.11	3.09
4,890.0	14.20	58.90	4,725.3	624.5	1,015.1	1,191.8	0.37	-0.32	0.75
4,984.0	12.90	60.50	4,816.7	635.6	1,034.1	1,213.8	1.44	-1.38	1.70
5,078.0	11.20	58.00	4,908.6	645.6	1,050.9	1,233.4	1.89	-1.81	-2.66
5,171.0	8.20	60.80	5,000.3	653.6	1,064.4	1,249.1	3.26	-3.23	3.01
5,265.0	6.20	57.20	5,093.5	659.6	1,074.5	1,260.8	2.18	-2.13	-3.83
5,359.0	4.50	58.80	5,187.1	664.3	1,081.9	1,269.6	1.82	-1.81	1.70
5,453.0	3.60	59.10	5,280.9	667.7	1,087.6	1,276.2	0.96	-0.96	0.32
5,546.0	2.50	59.50	5,373.7	670.2	1,091.9	1,281.2	1.18	-1.18	0.43
5,640.0	1.40	66.10	5,467.7	671.8	1,094.7	1,284.4	1.19	-1.17	7.02
5,672.4	0.92	68.24	5,500.1	672.0	1,095.3	1,285.0	1.49	-1.48	6.62
TARGET BHL 760'FSL & 1986'FWL									
5,734.0	0.10	153.70	5,561.7	672.1	1,095.8	1,285.5	1.49	-1.33	138.69

Company:	BAYSWATER EXPLORATION & PRODUCTION	Local Co-ordinate Reference:	Well Schlotthauer 14-23
Project:	SEC.23-T7N-R67W	TVD Reference:	WELL @ 4977.0ft (Original Well Elev)
Site:	Schlotthauer 13-23 Pad Sec.23-T7N-R67W	MD Reference:	WELL @ 4977.0ft (Original Well Elev)
Well:	Schlotthauer 14-23	North Reference:	True
Wellbore:	Wellbore #1	Survey Calculation Method:	Minimum Curvature
Design:	Wellbore #1	Database:	Landmark

Survey									
Measured Depth (ft)	Inclination (°)	Azimuth (°)	Vertical Depth (ft)	+N/-S (ft)	+E/-W (ft)	Vertical Section (ft)	Dogleg Rate (°/100ft)	Build Rate (°/100ft)	Turn Rate (°/100ft)
5,827.0	0.60	277.70	5,654.7	672.1	1,095.3	1,285.1	0.71	0.54	133.33
5,921.0	0.50	293.40	5,748.7	672.4	1,094.5	1,284.5	0.19	-0.11	16.70
6,015.0	0.50	229.20	5,842.7	672.3	1,093.8	1,283.8	0.57	0.00	-68.30
6,108.0	0.40	217.20	5,935.7	671.7	1,093.3	1,283.1	0.15	-0.11	-12.90
6,202.0	0.40	240.70	6,029.7	671.3	1,092.8	1,282.5	0.17	0.00	25.00
6,296.0	0.70	233.70	6,123.7	670.8	1,092.0	1,281.6	0.33	0.32	-7.45
6,389.0	0.70	218.60	6,216.6	670.0	1,091.2	1,280.5	0.20	0.00	-16.24
6,483.0	0.50	193.60	6,310.6	669.2	1,090.8	1,279.7	0.35	-0.21	-26.60
6,577.0	0.60	214.40	6,404.6	668.4	1,090.4	1,278.9	0.24	0.11	22.13
6,671.0	0.30	223.60	6,498.6	667.8	1,090.0	1,278.3	0.33	-0.32	9.79
6,764.0	0.70	237.60	6,591.6	667.3	1,089.3	1,277.5	0.45	0.43	15.05
6,858.0	0.80	210.40	6,685.6	666.4	1,088.5	1,276.3	0.39	0.11	-28.94
6,952.0	1.10	222.30	6,779.6	665.2	1,087.6	1,274.9	0.38	0.32	12.66
7,045.0	1.50	228.30	6,872.6	663.7	1,086.0	1,272.8	0.45	0.43	6.45
7,139.0	1.40	229.50	6,966.6	662.2	1,084.2	1,270.5	0.11	-0.11	1.28
7,174.1	1.14	231.01	7,001.6	661.7	1,083.7	1,269.7	0.75	-0.75	4.31
TARGET CIRCLE 760'FSL & 1986'FWL									
7,175.1	1.13	231.07	7,002.6	661.7	1,083.6	1,269.7	0.75	-0.75	5.34
LEGAL BOX 400' X 400', 661'FSL & 1986'FWL									
7,233.0	0.70	236.10	7,060.5	661.1	1,082.9	1,268.8	0.75	-0.74	8.69
7,326.0	0.60	237.00	7,153.5	660.5	1,082.0	1,267.7	0.11	-0.11	0.97
7,420.0	0.50	241.60	7,247.5	660.1	1,081.2	1,266.8	0.12	-0.11	4.89
7,514.0	0.60	215.00	7,341.5	659.5	1,080.6	1,265.9	0.29	0.11	-28.30
7,607.0	0.20	197.40	7,434.5	658.9	1,080.3	1,265.4	0.44	-0.43	-18.92
7,700.0	0.40	207.70	7,527.5	658.5	1,080.1	1,265.0	0.22	0.22	11.08

Checked By: _____ Approved By: _____ Date: _____