



SUPERIOR
Hays,
Kansas

MICRO LOG

Company MULL DRILLING COMPANY, INC.
Well CHAMPLIN - FIGGINS #3
Field SMOKEY CREEK
County CHEYENNE
State COLORADO

Company MULL DRILLING COMPANY, INC.
Well CHAMPLIN - FIGGINS #3
Field SMOKEY CREEK
County CHEYENNE State COLORADO

Location: API # : 05-017-07721-0000

1980' FSL & 660' FWL

SEC 27 TWP 13S RGE 44W

Permanent Datum GROUND LEVEL Elevation 4280
Log Measured From KELLY BUSHING 11' A.G.L.
Drilling Measured From KELLY BUSHING

Other Services
CDL/CNL/PE
DIL/SONIC
Elevation
K.B. 4291
D.F. 4289
G.L. 4280

Date 9/5/12

Run Number TWO

Depth Driller 5610

Depth Logger 5612

Bottom Logged Interval 5592

Top Log Interval 3600

Casing Driller 8 5/8"@1715'

Casing Logger 1714

Bit Size 7 7/8"

Type Fluid in Hole CHEMICAL MUD

Density / Viscosity 9.3/56

pH / Fluid Loss 9.5/8.8

Source of Sample FLOWLINE

Rm @ Meas. Temp .800@80F

Rmt @ Meas. Temp .600@80F

Rmc @ Meas. Temp .960@80F

Source of Rmt / Rmc MEASUREMENT

Rm @ BHT .489@131F

Time Circulation Stopped 6.5 HOURS

Time Logger on Bottom 3:45 A.M.

Maximum Recorded Temperature 131F

Equipment Number 4010

Location HAYS, KANSAS

Recorded By JEFF LUEBBERS

Witnessed By PHIL ASKEY

<<< Fold Here >>>

All interpretations are opinions based on inferences from electrical or other measurements and we cannot and do not guarantee the accuracy or correctness of any interpretation, and we shall not, except in the case of gross or willful negligence on our part, be liable or responsible for any loss, costs, damages, or expenses incurred or sustained by anyone resulting from any interpretation made by any of our officers, agents or employees. These interpretations are also subject to our general terms and conditions set out in our current Price Schedule.

Comments

THANK YOU FOR USING SUPERIOR WELL SERVICE HAYS, KANSAS (785) 628-6395
DIRECTIONS
CHEYENNE WELLS, CO., 4N. ON HWY 385 TO "RD. V", 1E., 1/2N., E. INTO

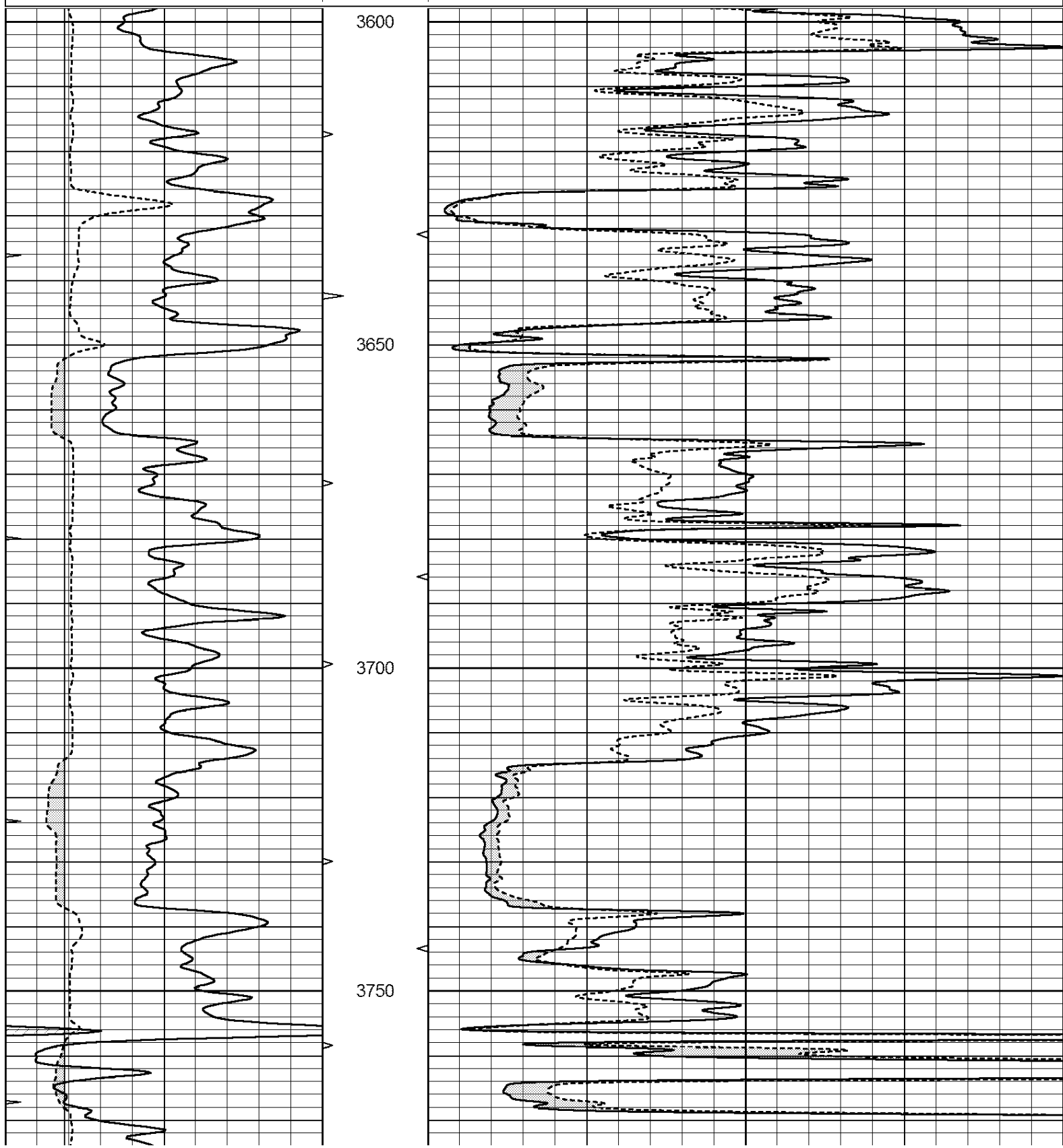


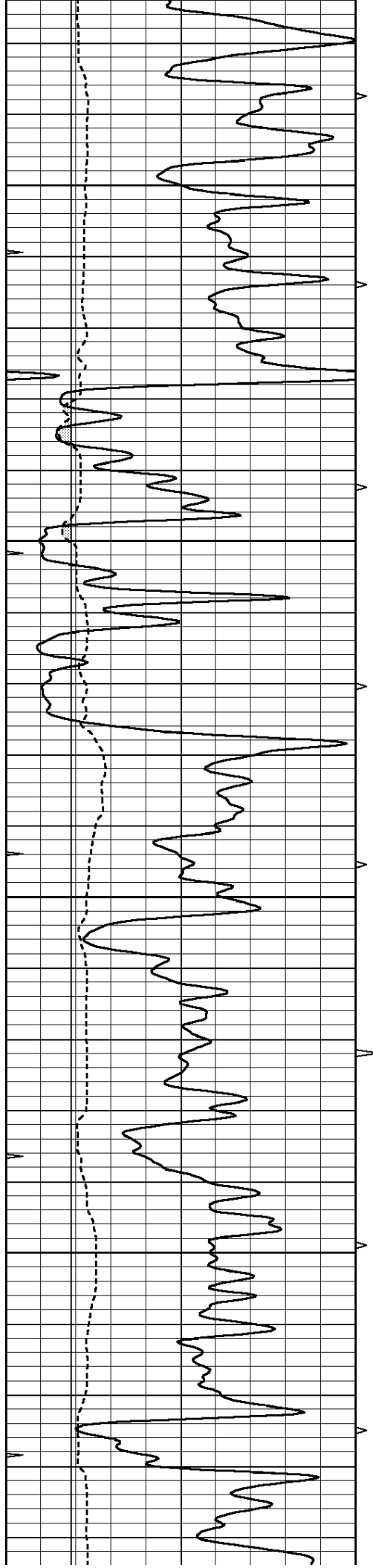
SUPERIOR
Hays,
Kansas

MAIN SECTION

Database File: 409518pe.db
Dataset Pathname: pass6.2
Presentation Format: micro
Dataset Creation: Wed Sep 05 08:05:25 2012
Charted by: Depth in Feet scaled 1:240

0	GAMMA RAY (GAPI)	150	ABHV	0	MEL1.5 (Ohm-m)	40
6	CALIPER (in)	16	10 (ft3)	0	MEL2.0 (Ohm-m)	40
0	MINMK	20	TBHV			
			0 (ft3)	10		



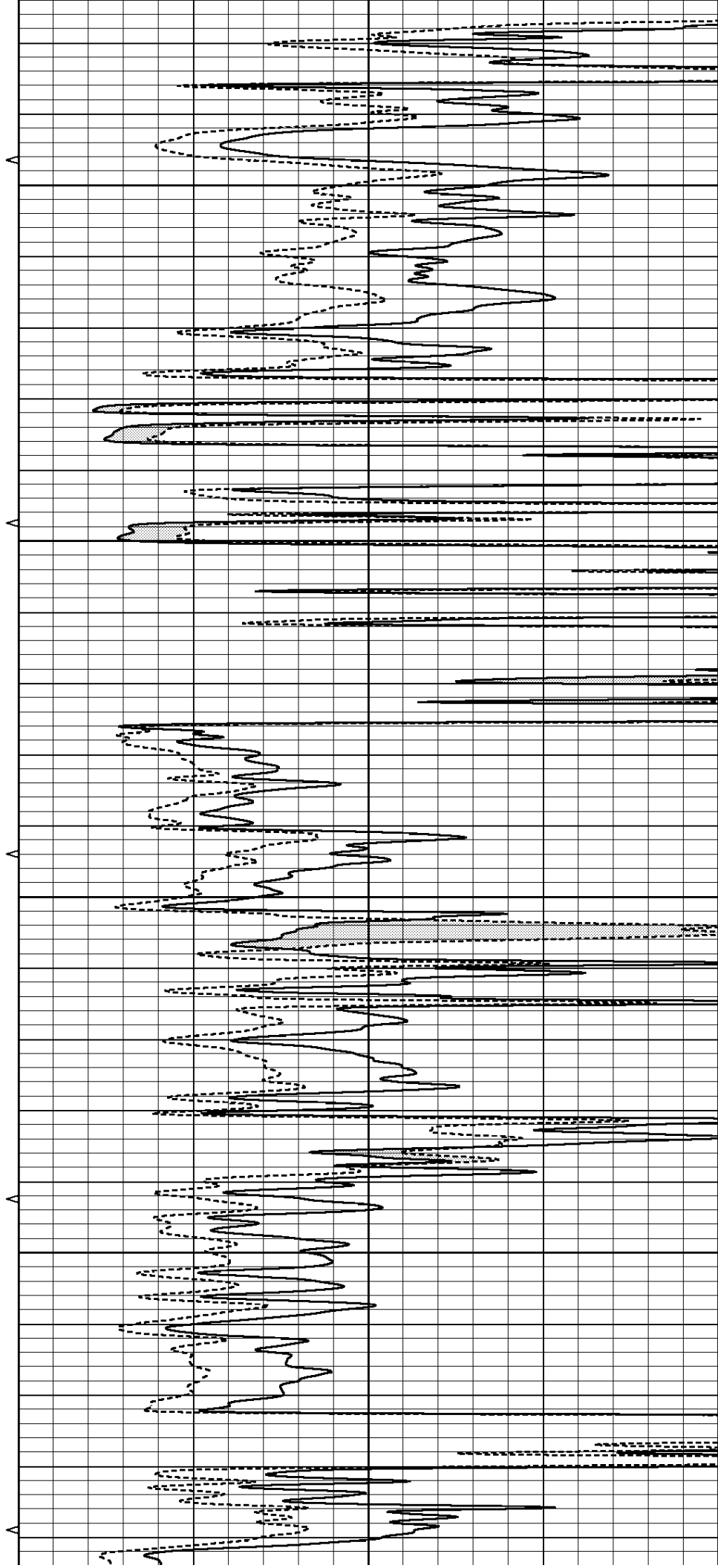


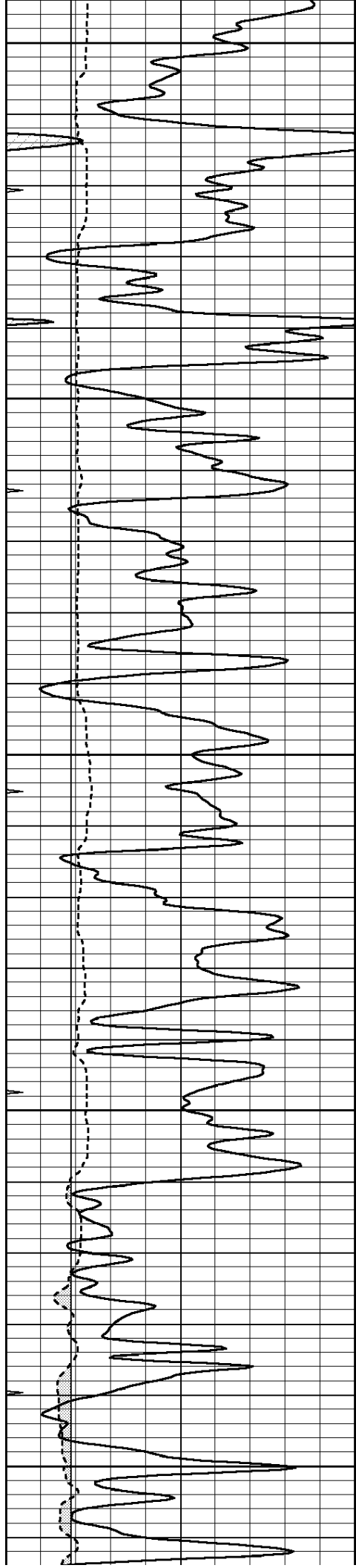
3800

3850

3900

3950





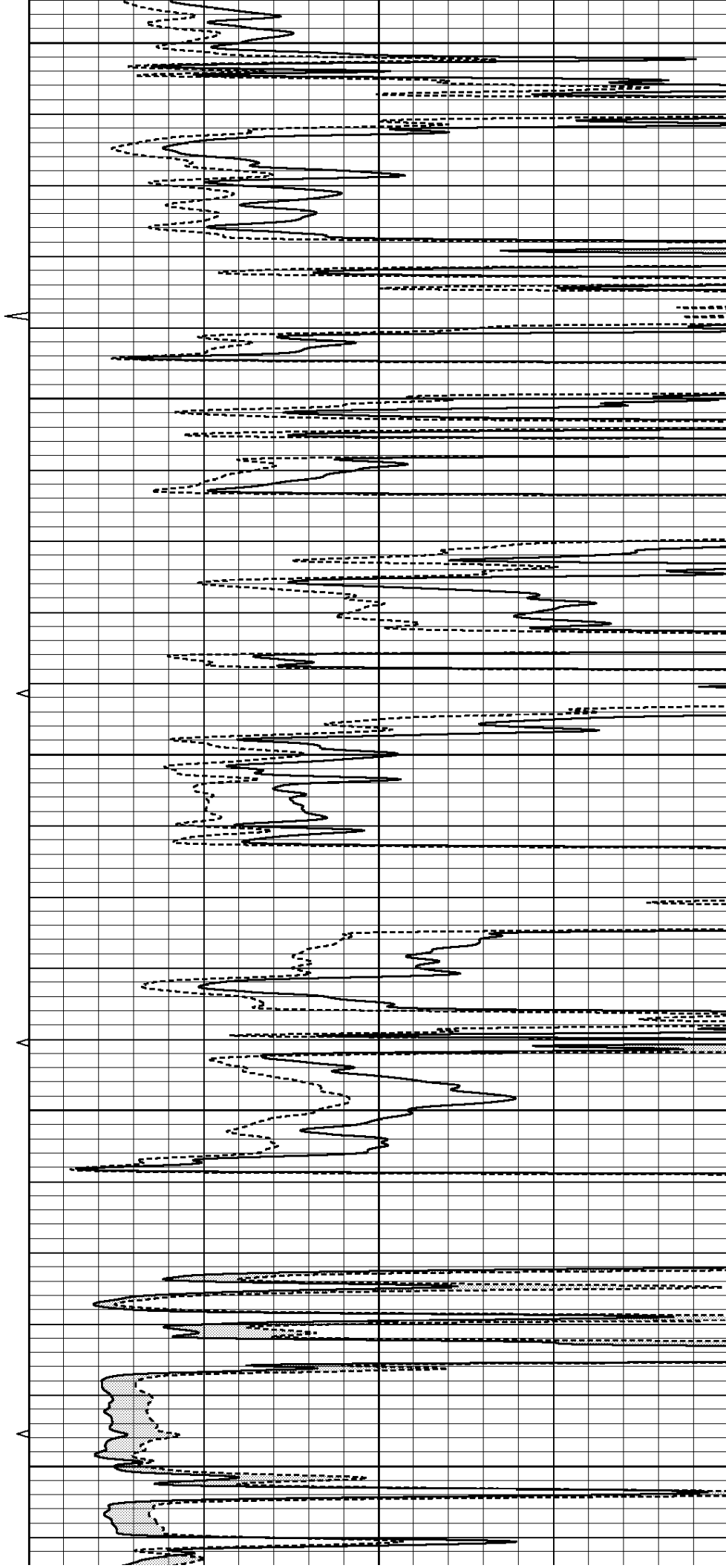
4000

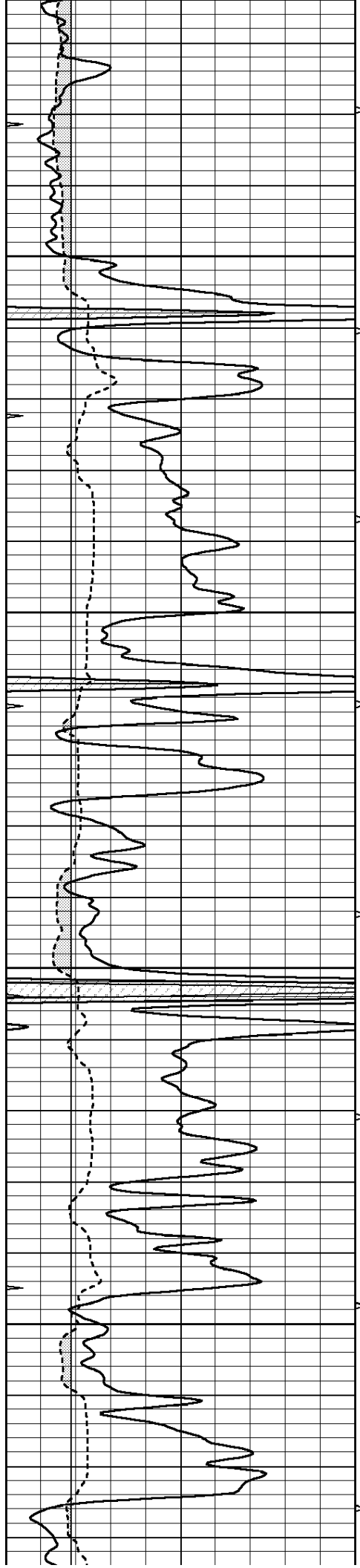
4050

4100

4150

4200



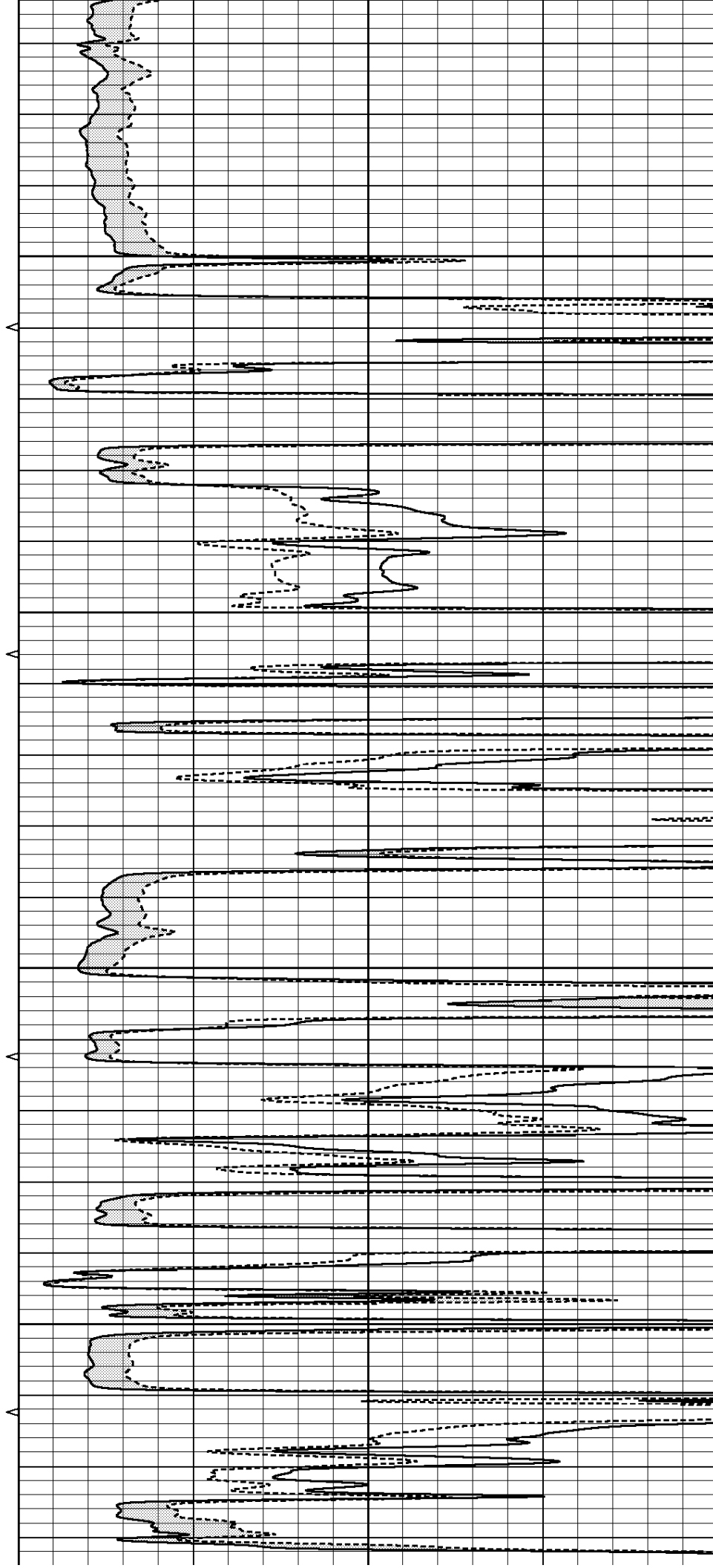


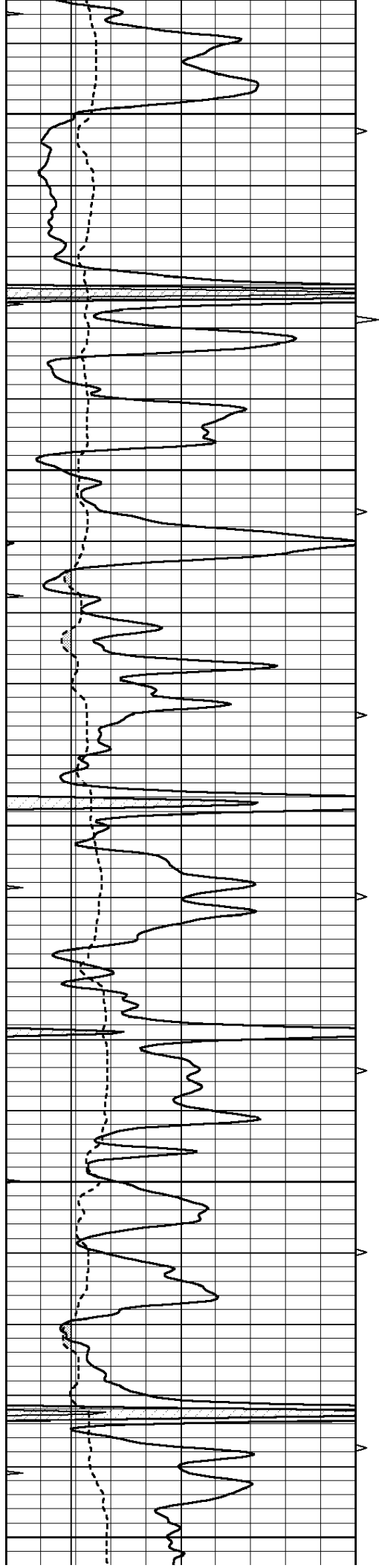
4250

4300

4350

4400





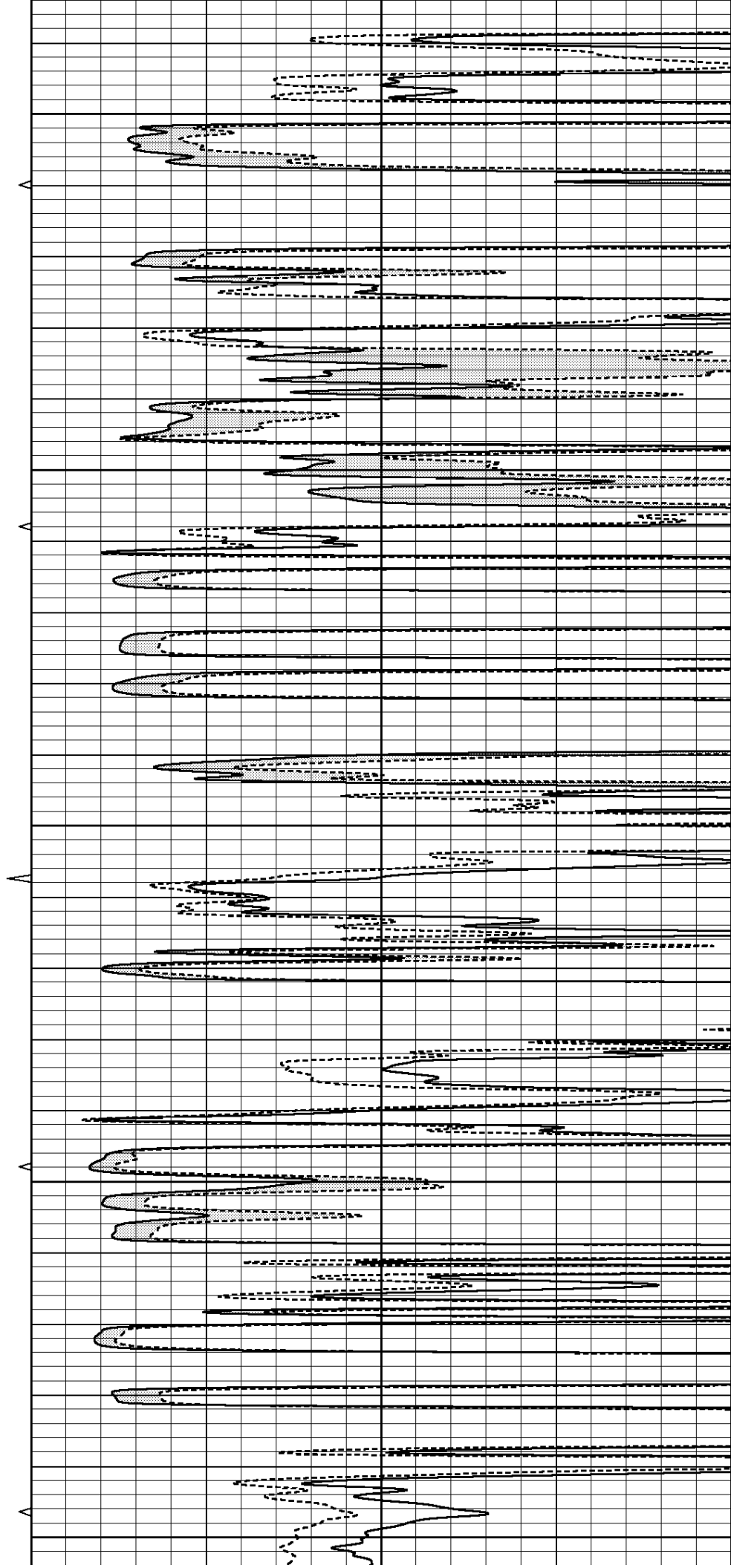
4450

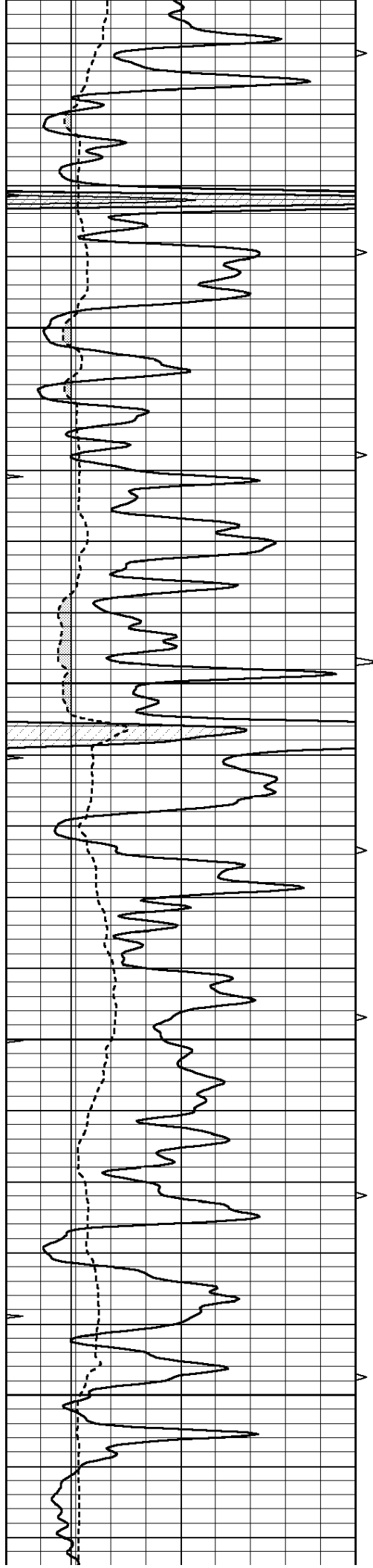
4500

4550

4600

4650



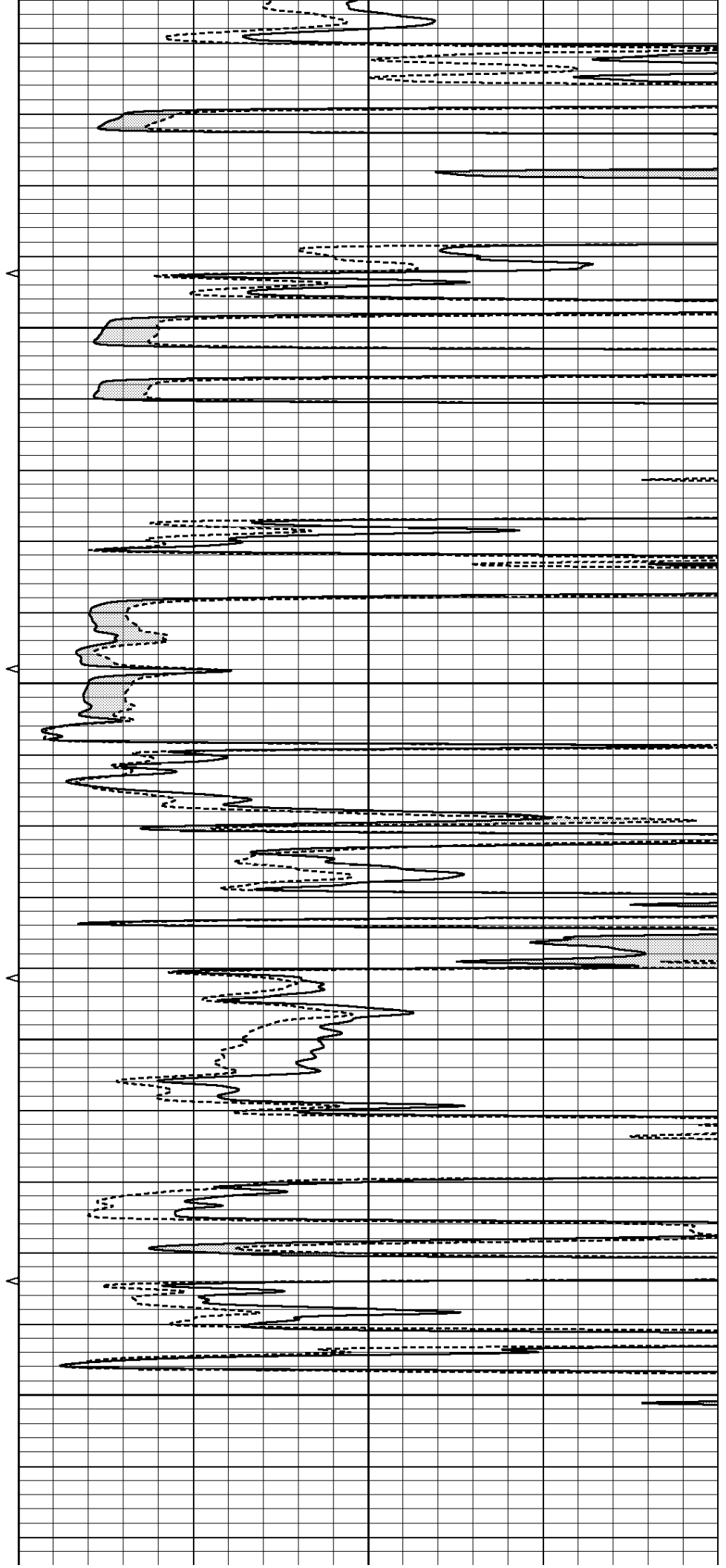


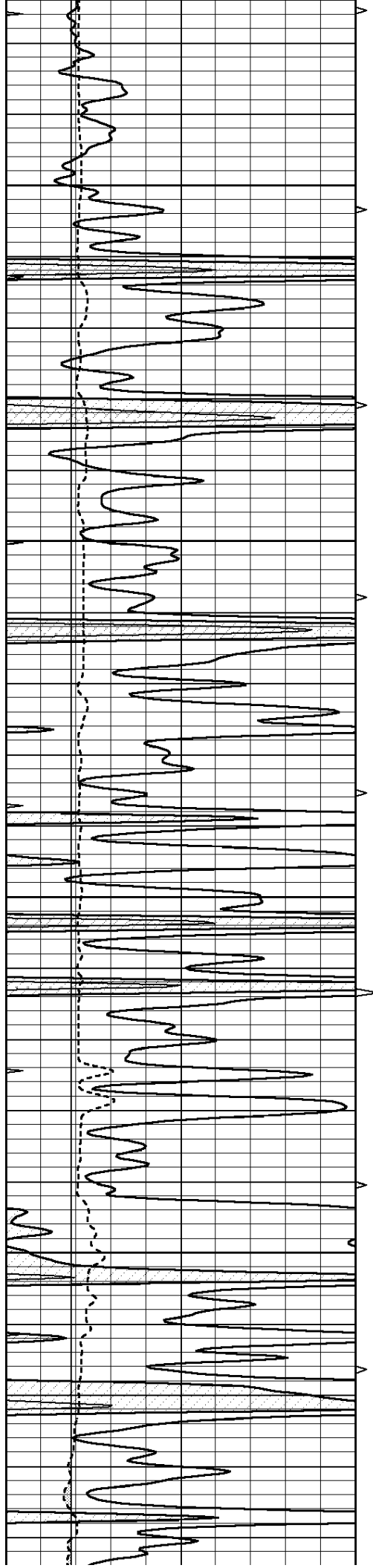
4700

4750

4800

4850



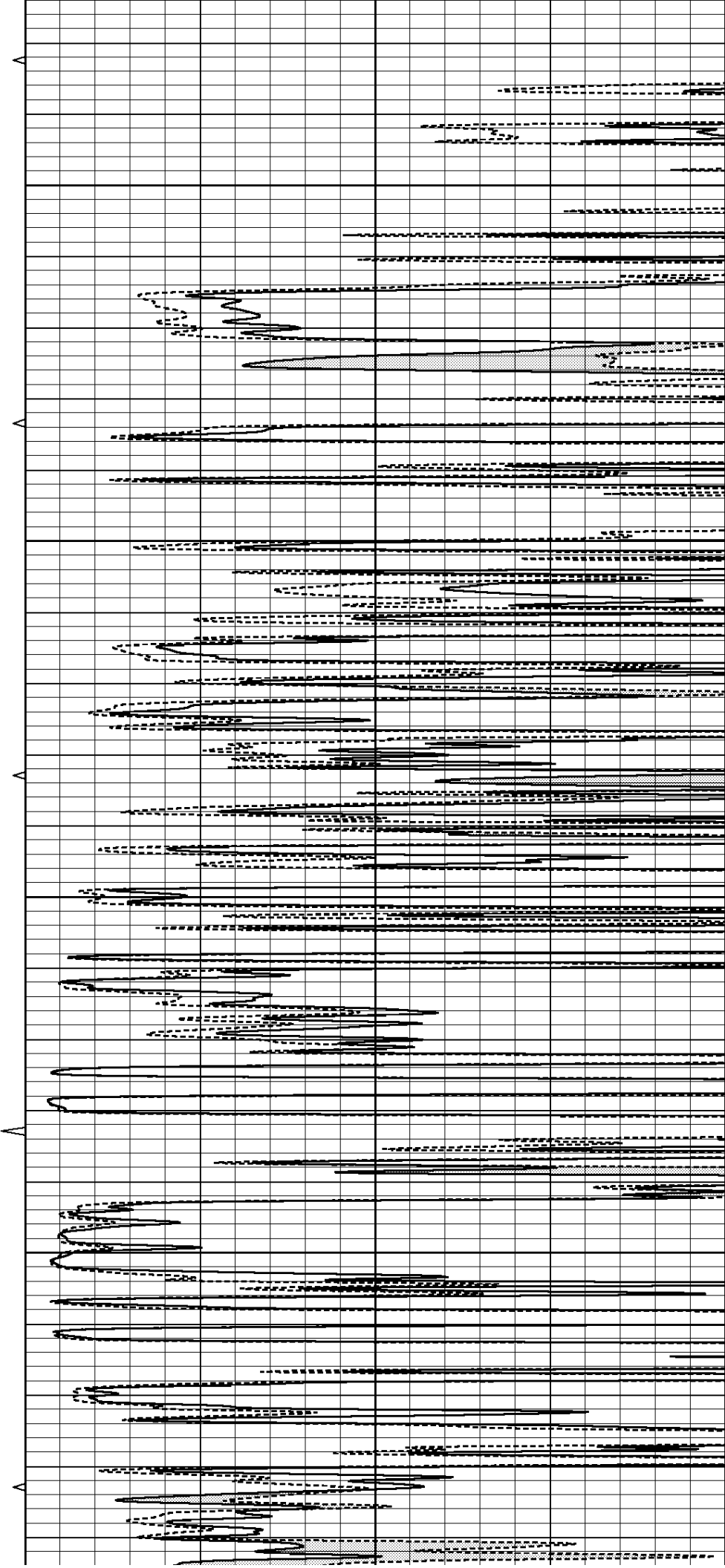


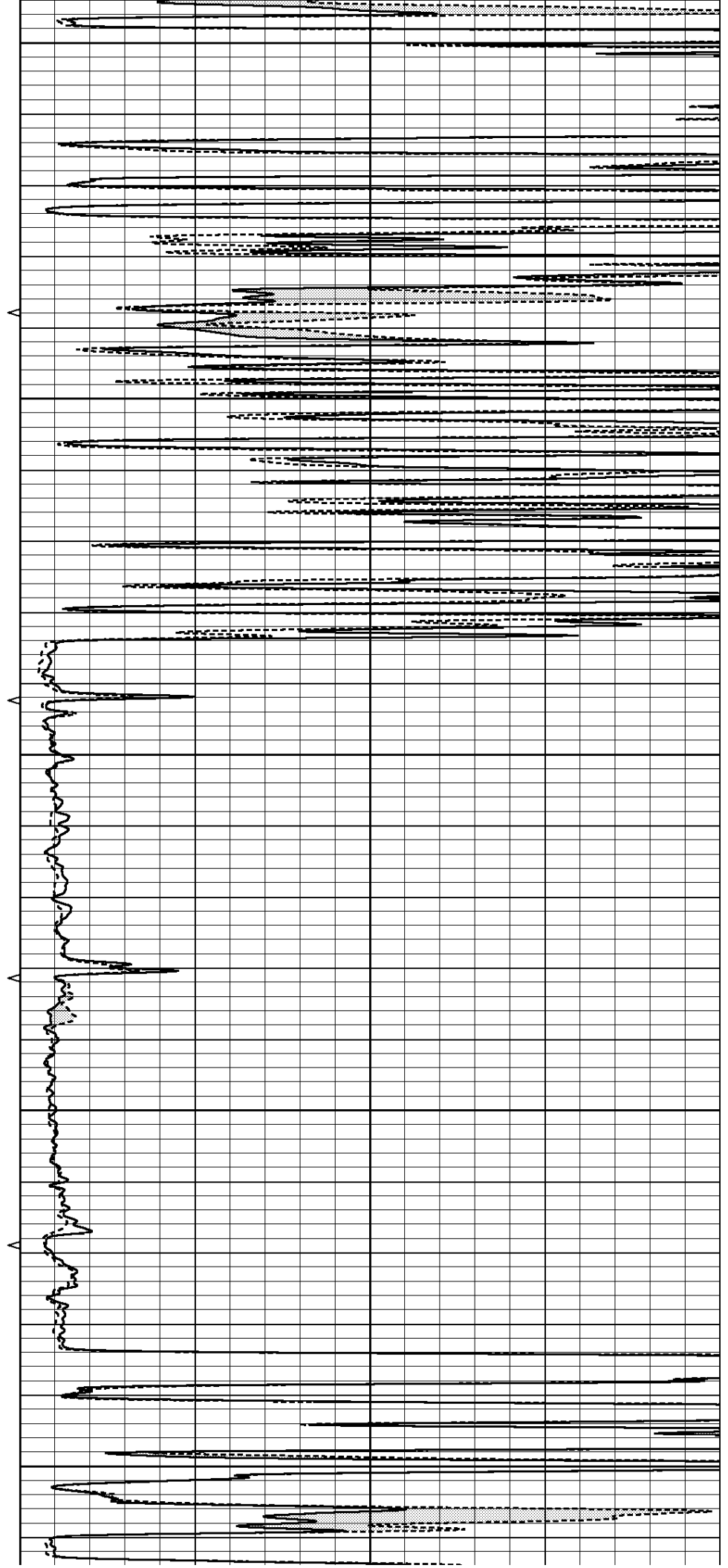
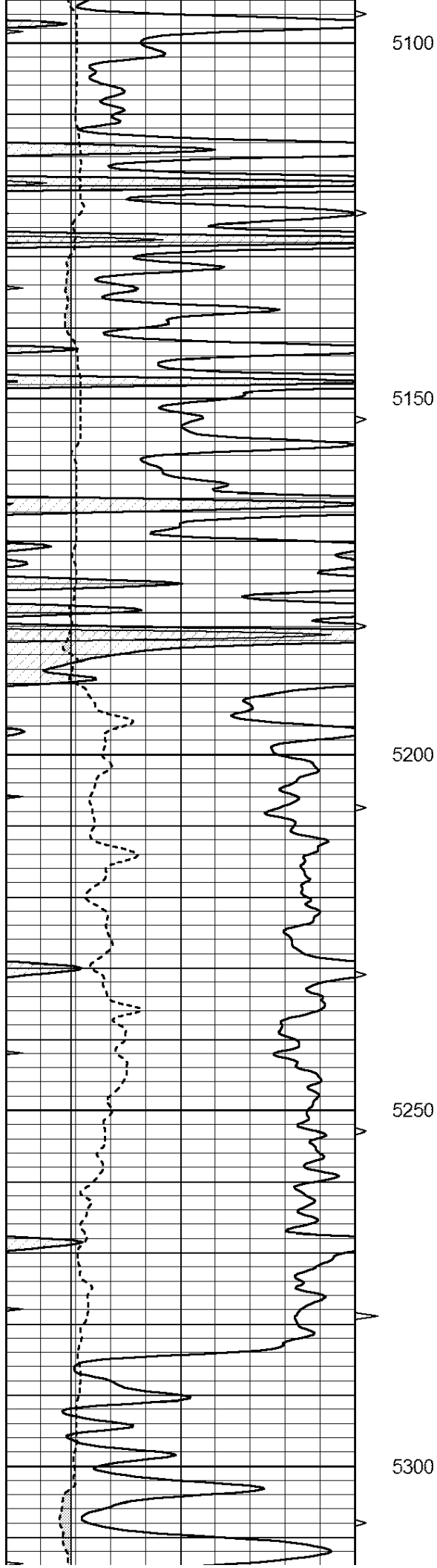
4900

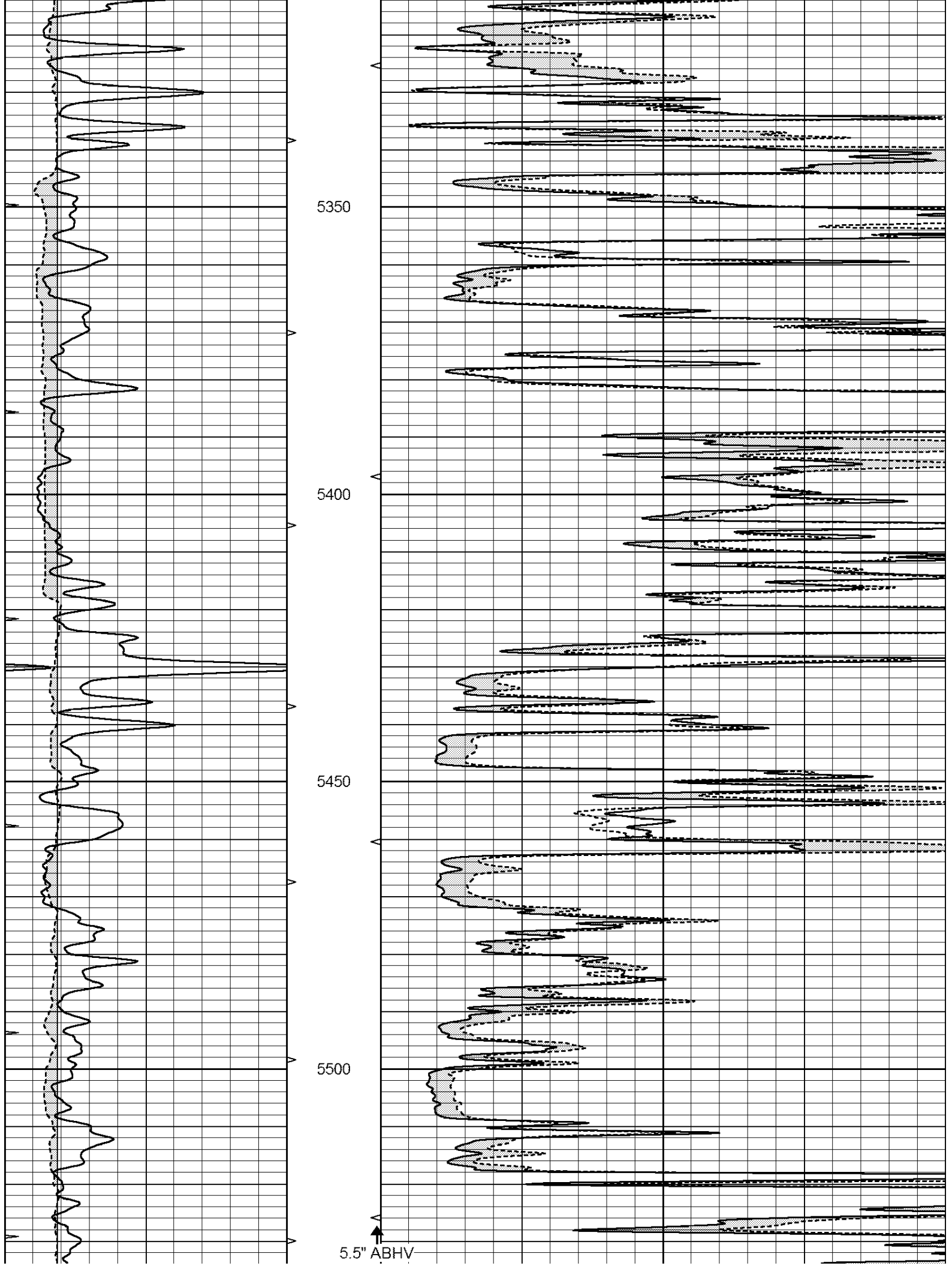
4950

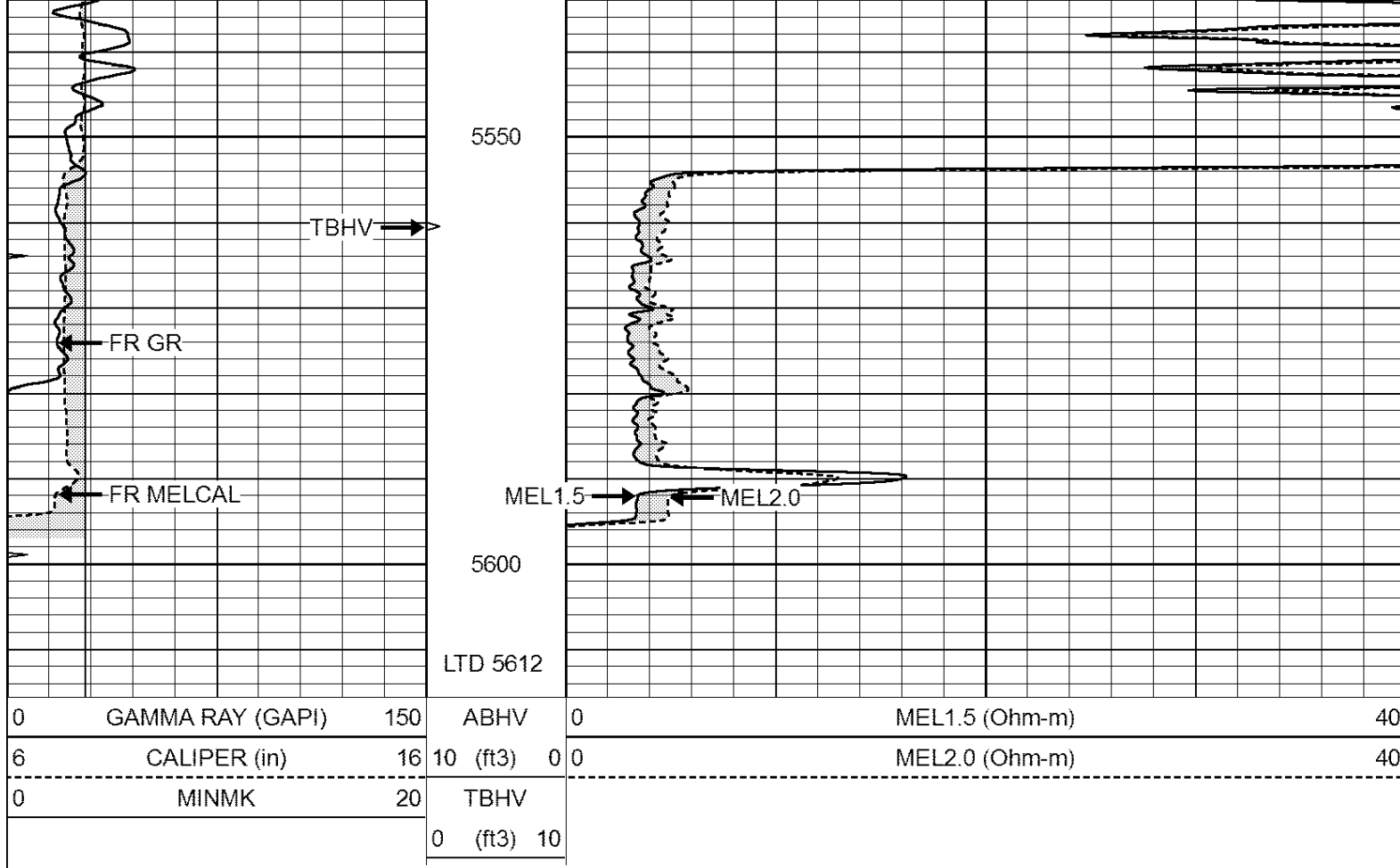
5000

5050





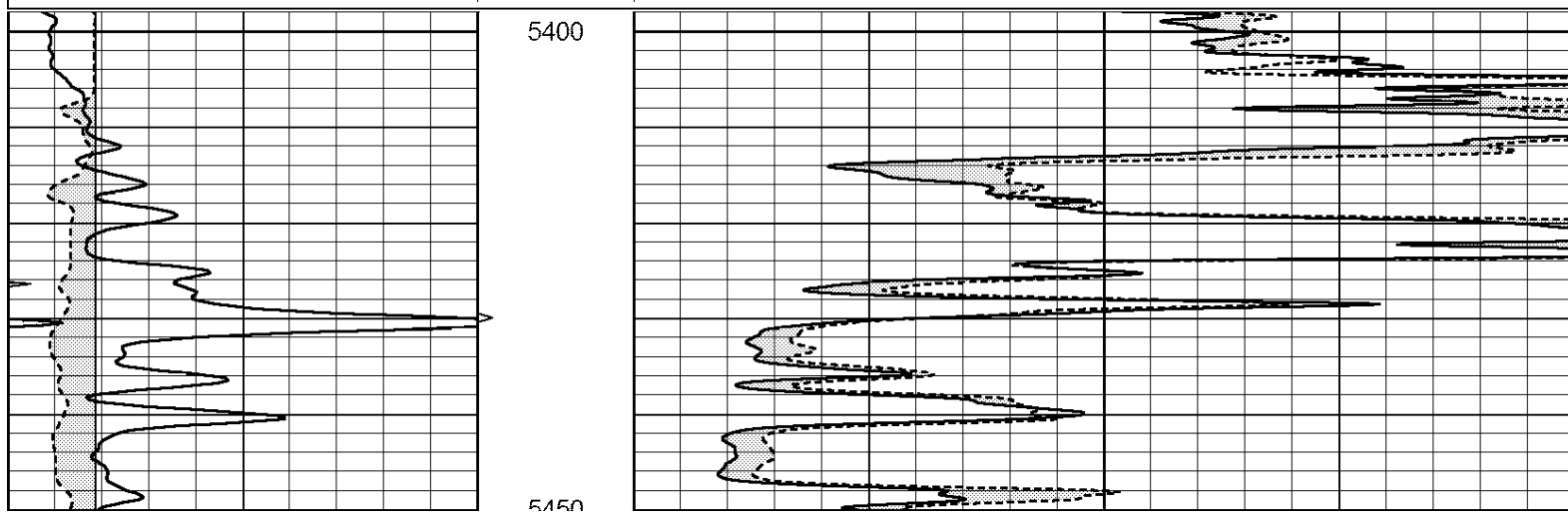
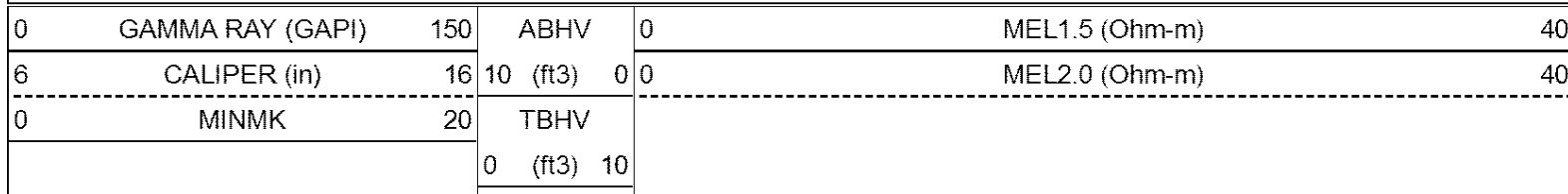


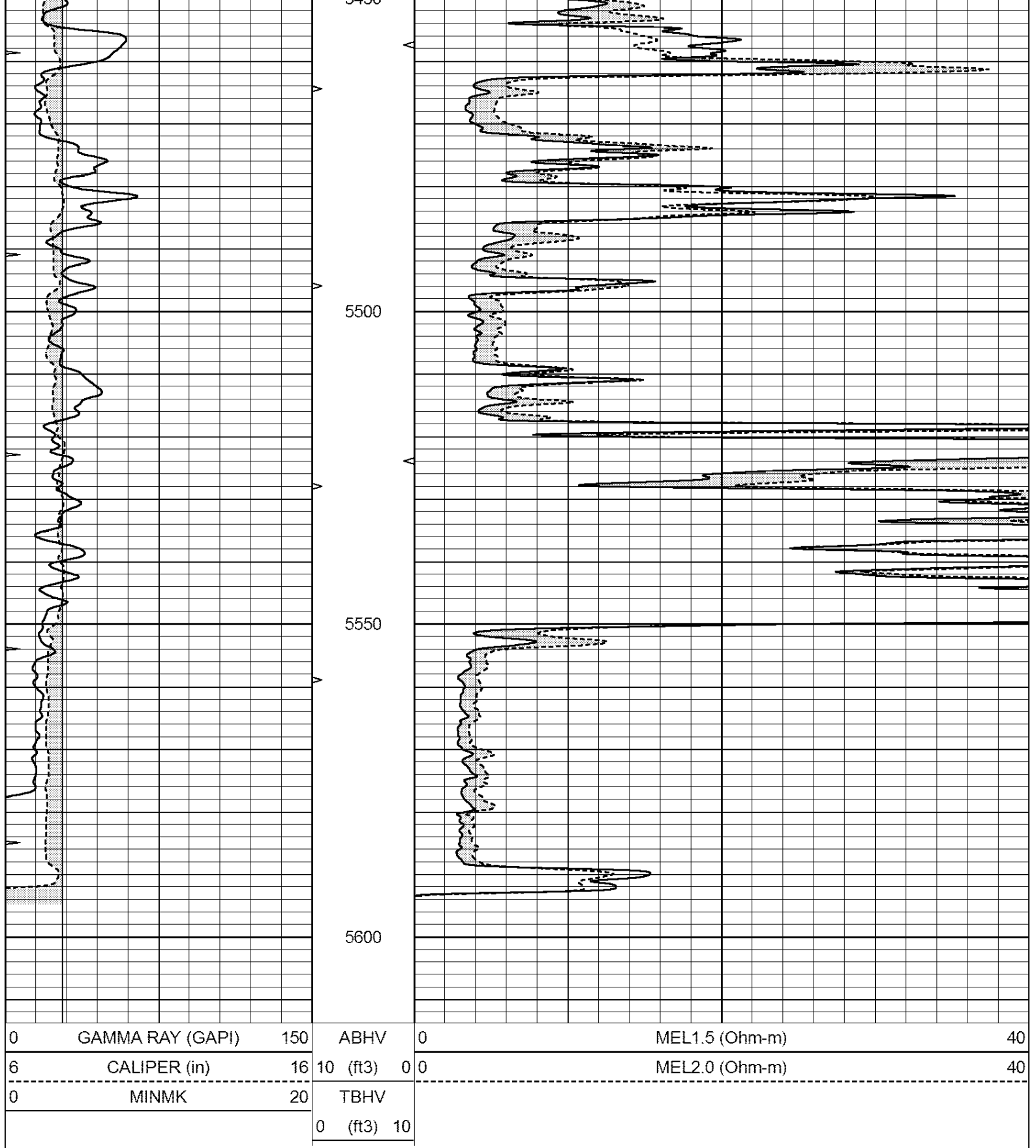


SUPERIOR
Hays,
Kansas

REPEAT SECTION

Database File: 409518pe.db
Dataset Pathname: pass5.4
Presentation Format: micro
Dataset Creation: Wed Sep 05 08:01:03 2012
Charted by: Depth in Feet scaled 1:240





Calibration Report

Database File: 409518pe.db
Dataset Pathname: pass6.2
Dataset Creation: Wed Sep 05 08:05:25 2012

MICRO Calibration Report

Serial Number:
Tool Model:

MICRO5
PROBE

Performed: Tue Sep 04 22:15:08 2012

Caliper Calibration: Gain=4.000 Offset=-8.400

	Low Cal	High Cal
References	8.000	16.000
Readings	4.100	6.100

1.5" Calibration: Gain=36.000 Offset=-0.500

	Low Cal	High Cal
References	0.000	20.000
Readings	-0.002	0.981

2" Calibration: Gain=40.000 Offset=-0.400

	Low Cal	High Cal
References	0.000	20.000
Readings	0.002	0.898

Gamma Ray Calibration Report

Serial Number:	GR4
Tool Model:	OPEN
Performed:	Wed Sep 05 05:58:07 2012

Calibrator Value:	200.0	GAPI
-------------------	-------	------

Background Reading:	0.0	cps
Calibrator Reading:	189.0	cps

Sensitivity:	1.5000	GAPI/cps
--------------	--------	----------