

T5N, R91W, 6th P.M.

SWEPI LP

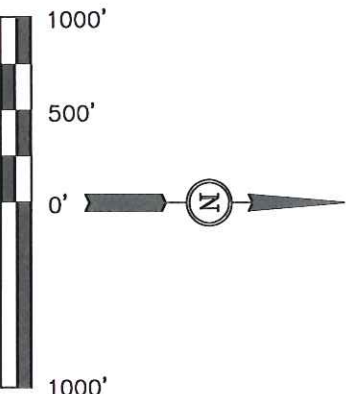
Well location, NORTH CASTOR GULCH #2-16, located as shown in TRACT 66 of Section 16, T5N, R91W, 6th P.M., Moffat County, Colorado.

BASIS OF ELEVATION

SPOT ELEVATION AT THE NORTHEAST CORNER OF SECTION 31, T5N, R90W, 6th P.M. TAKEN FROM THE HAMILTON QUADRANGLE, COLORADO, MOFFAT COUNTY, 7.5 MINUTE QUAD (TOPOGRAPHIC MAP) PUBLISHED BY THE UNITED STATES DEPARTMENT OF THE INTERIOR, GEOLOGICAL SURVEY. SAID ELEVATION IS MARKED AS BEING 6664 FEET.

BASIS OF BEARINGS

BASIS OF BEARINGS IS A G.P.S. OBSERVATION.



CERTIFICATE

THIS IS TO CERTIFY THAT THE ABOVE PLAT WAS PREPARED FROM FIELD NOTES OF ACTUAL SURVEYS MADE BY ME OR UNDER MY SUPERVISION AND THAT THE SAME ARE TRUE AND CORRECT TO THE BEST OF MY KNOWLEDGE AND BELIEF.

REGISTERED LAND SURVEYOR
STATE OF COLORADO
08-27-12

08-27-12

UTIAH ENGINEERING & LAND SURVEYING
86 SOUTH 200 EAST - VERNAL, UTAH 84078
(435) 789-1017

SCALE	DATE SURVEYED:	DATE DRAWN:
1" = 1000'	08-09-12	08-15-12

PARTY	REFERENCES
B.H. N.F. Z.L.	G.L.O. PLAT

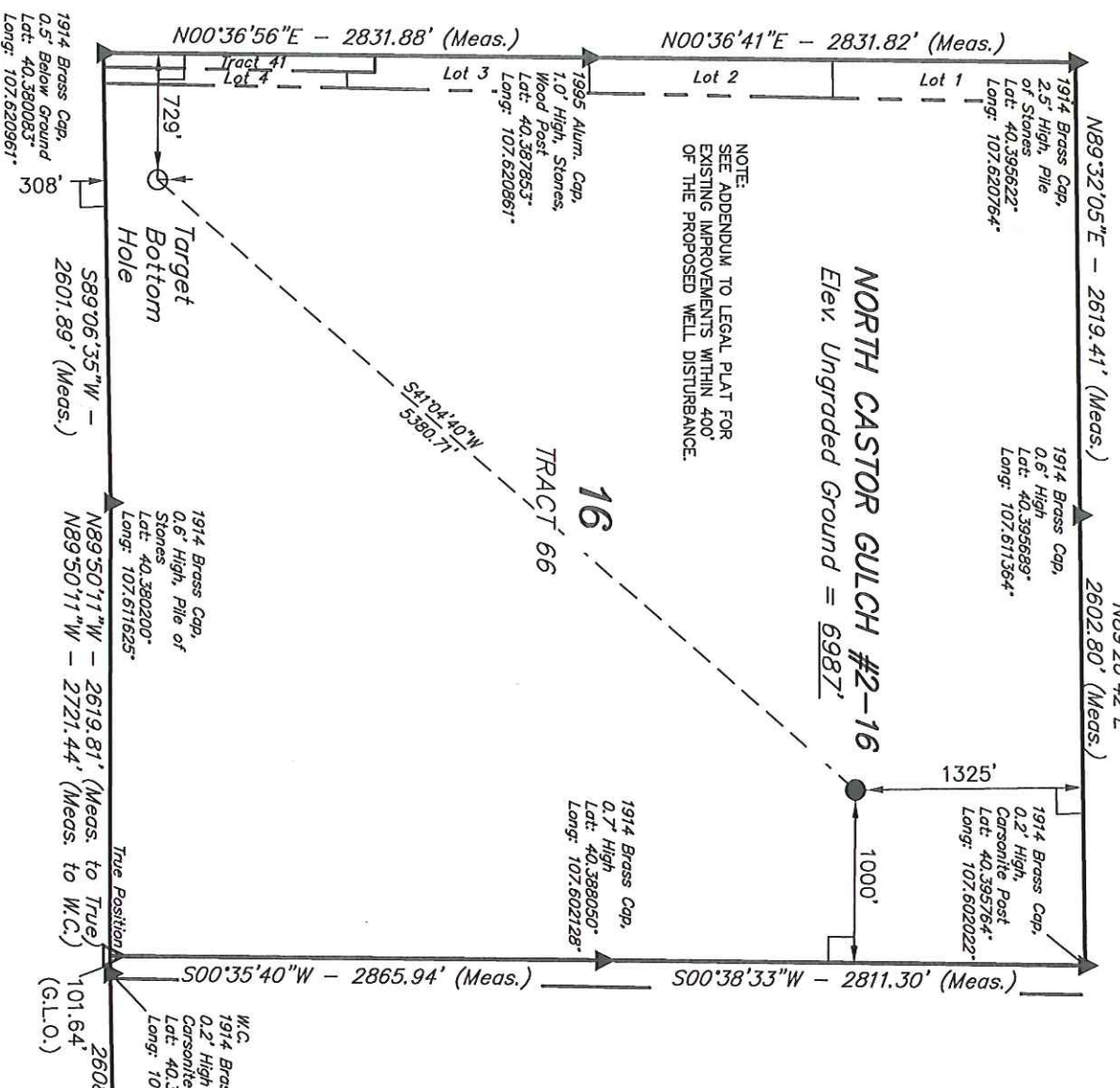
WEATHER	FILE
HOT	SWEPI LP

LEGEND:

- 90° SYMBOL
- PROPOSED WELL HEAD.
- SECTION CORNERS LOCATED

NAD 83 (TARGET BOTTOM HOLE)	NAD 83 (SURFACE LOCATION)
LATITUDE = 40°22'51.46" (40.380961)	LATITUDE = 40°23'31.56" (40.392100)
LONGITUDE = 107°37'06.00" (107.618333)	LONGITUDE = 107°36'20.37" (107.605658)
NAD 27 (TARGET BOTTOM HOLE)	NAD 27 (SURFACE LOCATION)
LATITUDE = 40°22'51.56" (40.380989)	LATITUDE = 40°23'31.66" (40.392128)
LONGITUDE = 107°37'03.76" (107.617711)	LONGITUDE = 107°36'18.13" (107.605036)

PDOP = 1.5





SWEPI LP
ADDENDUM TO LEGAL PLAT FOR
NORTH CASTOR GULCH #2-16, #3-16, #4-16 & #5-16
SECTION 16, T5N, R91W, 6th P.M.
TRACT 66

SCALE: 1" = 200'
DATE: 12-05-11
DRAWN BY: J.I.
REV: 05-21-12 J.M.H.
REV: 08-27-12 Z.L.

