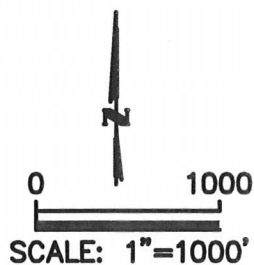
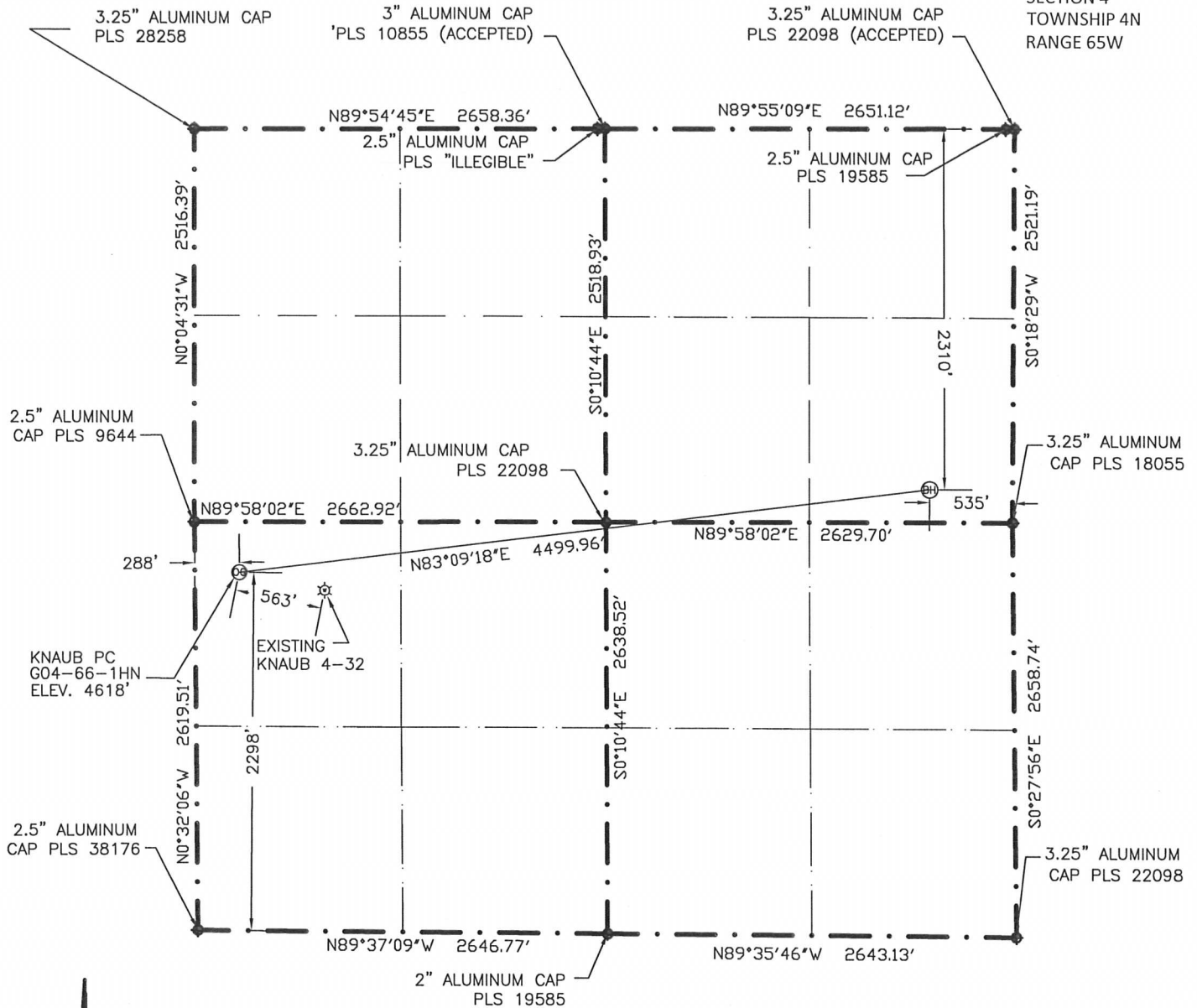


WELL LOCATION CERTIFICATE

THIS MAP DOES NOT REPRESENT A BOUNDARY SURVEY

SECTION 4
TOWNSHIP 4N
RANGE 65W



IN ACCORDANCE WITH A REQUEST BY ERIK VAN DECAR-NOBLE ENERGY INC., BOUNDARY BOYS, LLC. HAS DETERMINED THE LOCATION OF THE KNAUB-PC G04-66-1HN WELL TO BE 2298' FSL, 288' FWL, AS MEASURED AT NINETY (90) DEGREES FROM THE SECTION LINES, AND THE BOTTOM HOLE TO BE 2310' FNL, 535' FEL, SECTION 4, TOWNSHIP 4 NORTH, RANGE 65 WEST, 6TH PRINCIPLE MERIDIAN, WELD COUNTY, COLORADO

I HEREBY CERTIFY THAT THIS WELL LOCATION CERTIFICATE WAS PREPARED BY ME, OR UNDER MY DIRECT SUPERVISION, THAT THE FIELD WORK WAS COMPLETED ON DECEMBER 19, 2011 FOR AND ON BEHALF OF NOBLE ENERGY INC., THAT IT IS NOT A LAND SURVEY PLAT OR AN IMPROVEMENT SURVEY PLAT, AND THAT IT IS NOT TO BE RELIED UPON FOR ESTABLISHMENT OF FENCE, BUILDING, OR OTHER FUTURE IMPROVEMENT LINES.

LATITUDE & LONGITUDE (NAD83 SURFACE HOLE)
LATITUDE: N 40.34067
LONGITUDE: W 104.67668
PDOP: 2.2
QUARTER-QUARTER: NW~~4~~SW~~4~~
NEAREST PROPERTY LINE: 288' WEST

LATITUDE & LONGITUDE (NAD83 BOTTOM HOLE)
LATITUDE: N 40.34203
LONGITUDE: W 104.66064
QUARTER-QUARTER: SE~~4~~NE~~4~~

- 1) BASIS OF BEARINGS FOR THIS MAP ARE BASED UPON GPS OBSERVATIONS MADE ON DECEMBER 19, 2011 BETWEEN MONUMENTS LOCATED AT THE NORTHWEST CORNER AND THE NE~~4~~ CORNER OF SAID SECTION 4 AND WITH ALL OTHER BEARINGS SHOWN HEREON RELATIVE THERETO.
- 2) ELEVATIONS ARE BASED UPON NGS OPUS SOLUTION, NAVD 88 DATUM
- 3) THE NEAREST EXISTING WELL IS KNAUB 4-32, 563' EAST-SOUTH-EAST
- 4) SEE VISIBLE IMPROVEMENTS EXHIBIT FOR ALL IMPROVEMENTS WITH 400' IMPROVEMENT BUFFER
- 5) THE LOCATION FALLS IN PASTURE LAND

NOTICE: According to Colorado law you MUST commence any legal action based upon any defect in this W.L.C. within three years after you first discover such defect. In no event may any action based upon any defect in this W.L.C. be commenced more than ten years from this said date of the certification shown hereon.

LEGEND



FOUND SURVEY MONUMENT PER
MONUMENT RECORD-EXCEPTIONS NOTED



CALCULATED

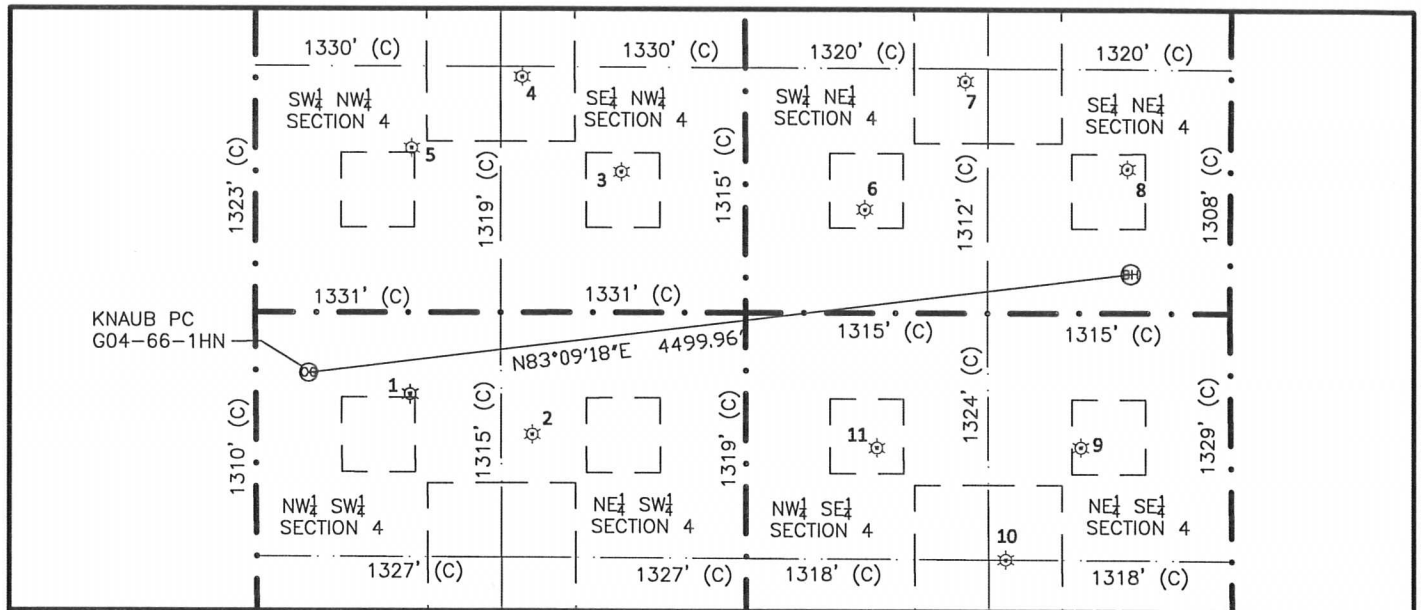


EXISTING WELL HEAD
(UNLESS OTHERWISE NOTED)



Gregory A. Clark
Professional Land Surveyor Registration No. 32430
State of Colorado

Job No. 1NOB0114



①

KNAUB 4-32
 NW $\frac{1}{4}$ SW $\frac{1}{4}$
 2187' FSL
 838' FWL
 LAT- 40.34037N
 LONG- 104.67469W
 PDOP 2.3
 ELEV. 4679

②

KNAUB 4-1
 NE $\frac{1}{4}$ SW $\frac{1}{4}$
 1976' FSL
 1498' FWL
 LAT- 40.33978N
 LONG- 104.67232W
 PDOP 2.1
 ELEV. 4681

③

WALKER 4-24
 NE $\frac{1}{4}$ NW $\frac{1}{4}$
 1763' FNL
 1986' FWL
 LAT- 40.34364N
 LONG- 104.67059W
 PDOP 1.8
 ELEV. 4676

④

WALKER 4-25
 NE $\frac{1}{4}$ NW $\frac{1}{4}$
 1263' FNL
 1457' FWL
 LAT- 40.34501N
 LONG- 104.67249W
 PDOP 2.6
 ELEV. 4672

⑤

BARNARD 4-23
 SW $\frac{1}{4}$ NW $\frac{1}{4}$
 1634' FNL
 850' FWL
 LAT- 40.34399N
 LONG- 104.67467W
 PDOP 2.3
 ELEV. 4676

⑥

MCCLELLAN 4-1
 SW $\frac{1}{4}$ NE $\frac{1}{4}$
 1963' FNL
 1985' FEL
 LAT- 40.34310N
 LONG- 104.66584W
 PDOP 1.7
 ELEV. 4679

⑦

MCCLELLAN 4-15
 SW $\frac{1}{4}$ NE $\frac{1}{4}$
 1276' FNL
 1442' FEL
 LAT- 40.34498N
 LONG- 104.66388W
 PDOP 2.1
 ELEV. 4681

⑧

SCHISLER 4-14
 SE $\frac{1}{4}$ NE $\frac{1}{4}$
 1792' FNL
 548' FEL
 LAT- 40.34357N
 LONG- 104.66068W
 PDOP 1.9
 ELEV. 4676

⑨

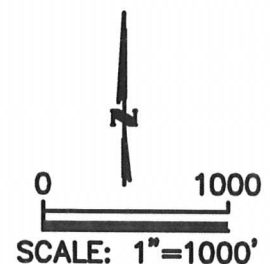
KALLAS 4-41
 NE $\frac{1}{4}$ SE $\frac{1}{4}$
 1932' FSL
 811' FEL
 LAT- 40.33960N
 LONG- 104.66162W
 PDOP 2.0
 ELEV. 4672

⑩

KALLAS 4-45
 NE $\frac{1}{4}$ SE $\frac{1}{4}$
 1326' FSL
 1225' FEL
 LAT- 40.33794N
 LONG- 104.66309W
 PDOP 1.8
 ELEV. 4676

⑪

KALLAS 4-42
 NW $\frac{1}{4}$ SE $\frac{1}{4}$
 1921' FSL
 1921' FEL
 LAT- 40.33959N
 LONG- 104.66560W
 PDOP 1.9
 ELEV. 4679



1) THIS SKETCH DOES NOT REPRESENT A BOUNDARY SURVEY

2) THE DATUM FOR THE LATITUDES AND LONGITUDES ON THIS SKETCH IS NAD83