

CONSTRUCTION LAYOUT DRAWING

1 of 2

VEGETATION:
PASTURE

SURFACE USE:
GRAZING

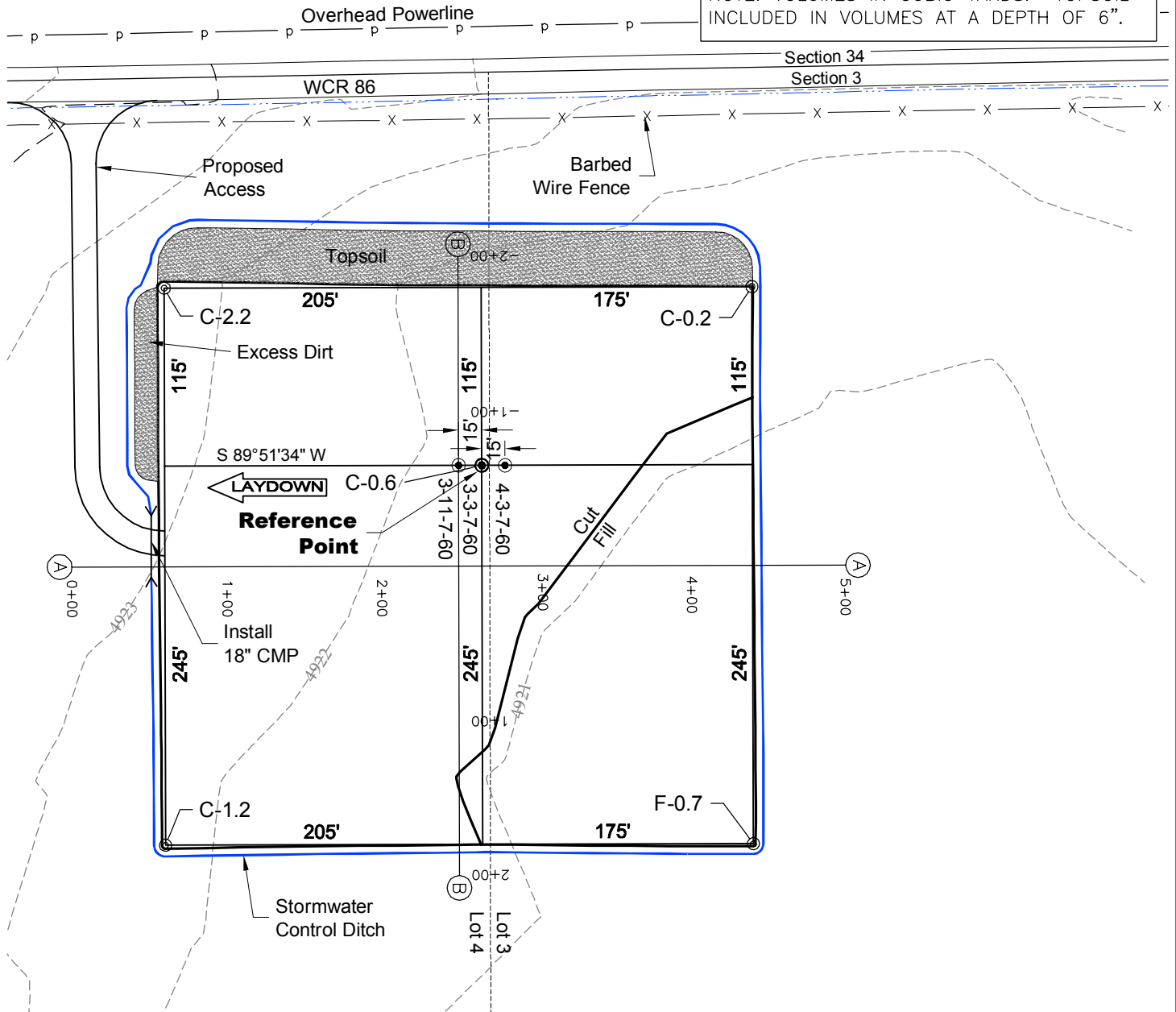
PAD 360'X380' ELEV=4921.1'

DISTURBED AREA=4.1± ACRES

ESTIMATED DIRT QUANTITIES

CUTx10%	FILL	TOPSOIL	EXCESS
3,480	520	2,650	310

NOTE: VOLUMES IN CUBIC YARDS. TOPSOIL INCLUDED IN VOLUMES AT A DEPTH OF 6".



NOTE:

10% ALLOWANCE IS MADE FOR SOIL EXPANSION.

10/4/12

GEO SURV

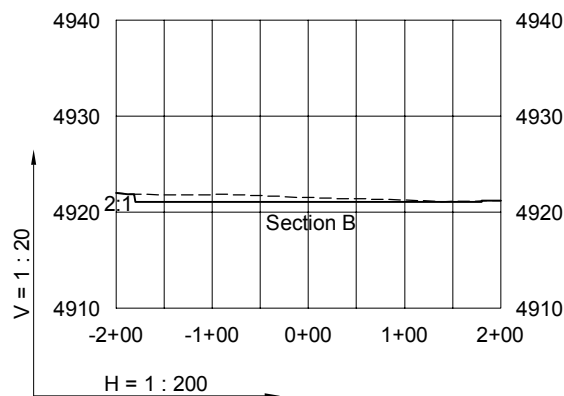
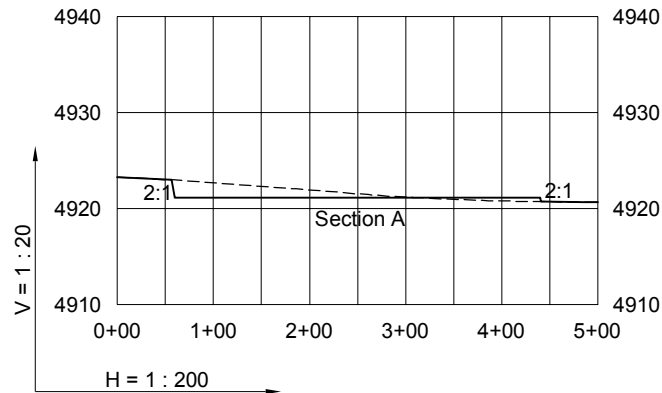
LAND SURVEYING AND MAPPING
LAFAYETTE - WINTER PARK
Ph 303 666 0379 Fx 303 665 6320

CARRIZO OIL & GAS, INC
PERGAMOS 3-11-7-60 PAD

LOT 4 SECTION 3 T7N R60W
6th PM WELD COUNTY COLORADO

CONSTRUCTION LAYOUT DRAWING

2 of 2



10/4/12

----- Existing Ground
 _____ Proposed Grade



LAND SURVEYING AND MAPPING
LAFAYETTE - WINTER PARK
 Ph 303 666 0379 Fx 303 665 6320

CARRIZO OIL & GAS, INC
PERGAMOS 3-11-7-60 PAD

LOT 4 SECTION 3 T7N R60W
6th PM WELD COUNTY COLORADO