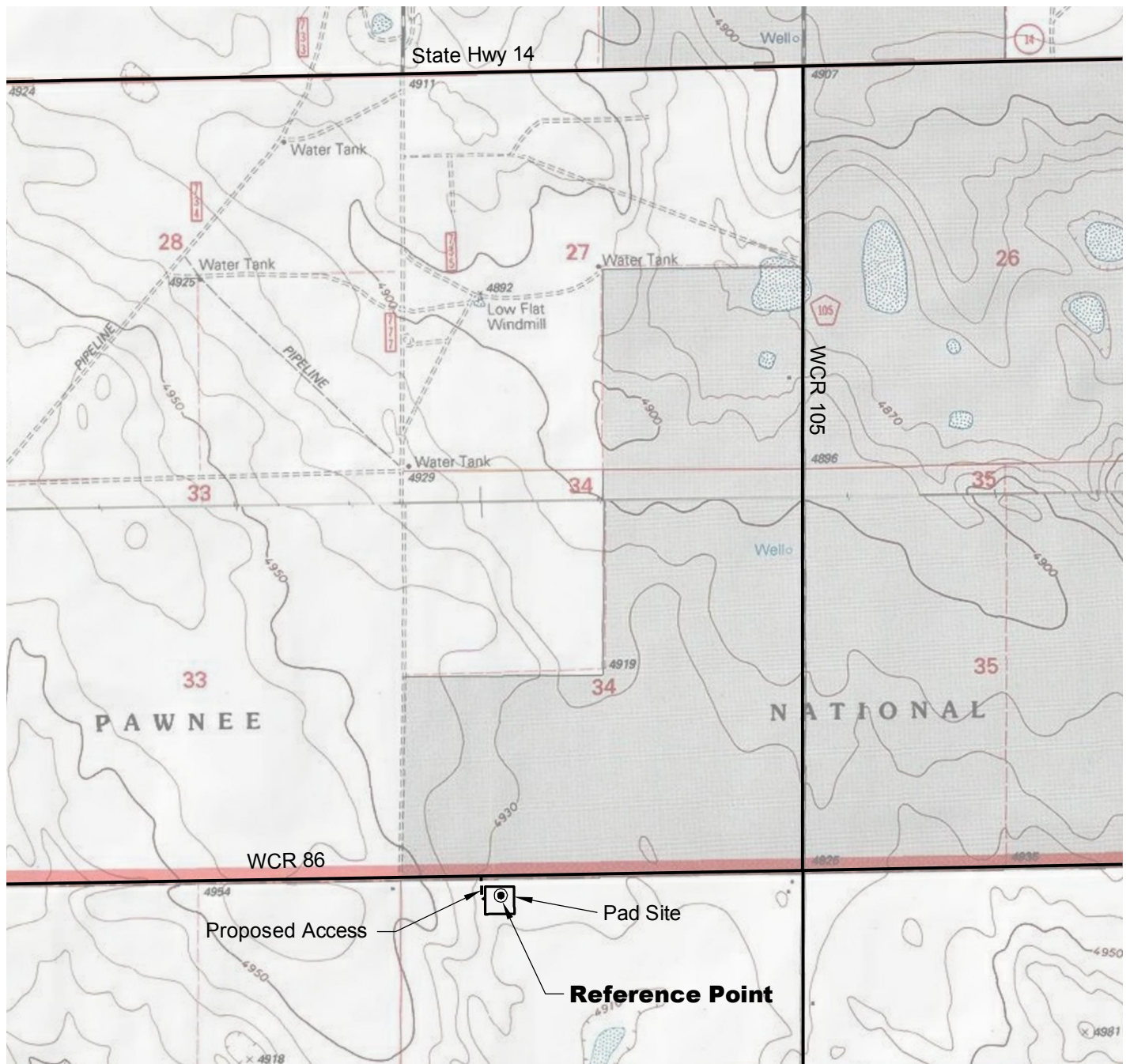


ACCESS ROAD MAP



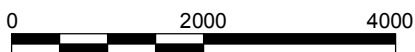
DRIVING DIRECTIONS:

MP 0.0 - Intersection of Highway 14 a.k.a. WCR 90 & Highway 392 a.k.a. WCR 77 in Briggsdale; East on Highway 14
 MP 13.9 - Right on WCR 105
 MP 15.9 - Right on WCR 86
 MP 16.7 - Left on access to pad
 MP 16.8 - Pergamos 3-11-7-60 Pad

10/4/12



North



Graphic Scale in Feet
 1" = 2000'



LAND SURVEYING AND MAPPING
 LAFAYETTE - WINTER PARK
 Ph 303 666 0379 Fx 303 665 6320

CARRIZO OIL & GAS, INC
PERGAMOS 3-11-7-60 PAD

LOT 4 SECTION 3 T7N R60W
6th PM WELD COUNTY COLORADO