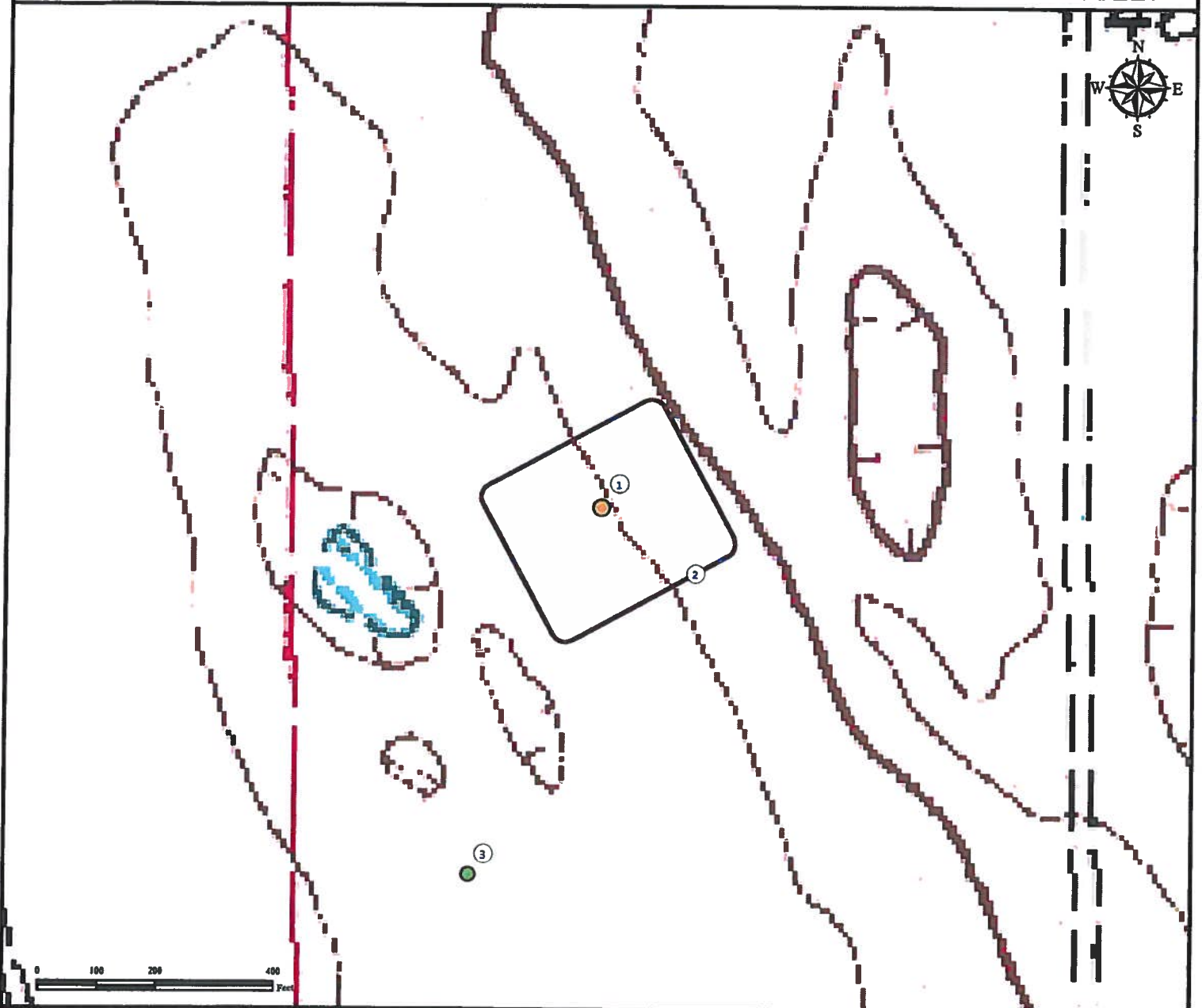


Reference Area Map

F R O G P O N D 1 3 - 5 4 - 1 2 - 1

NE¼ NE¼ SECTION 12, TOWNSHIP 13 SOUTH, RANGE 54 WEST OF THE 6TH PRINCIPAL MERIDIAN



1. Proposed Well FROG POND 13-54-12-1.

2. Operational Disturbance Area.

3. Reference Photo Point.

Legend



Proposed Well



Disturbance Area



Reference Photo Point

Reference Location

** All Measurements are Made from

● Reference Photo Point **

Lat: 38.932214° Long: -103.389565° (NAD 83)
Elevation: 4849 Feet

Surface Use: Rangeland



Use our resources to find yours!
www.petro-fs.com
(303) 928-7128

Field Date: 09/26/2012
Drafting Date: 10/01/2012
Drafter: PAH
Revision:

Data Sources:
- TOPO courtesy of USGS

Prepared for:

PINE RIDGE OIL & GAS, LLC