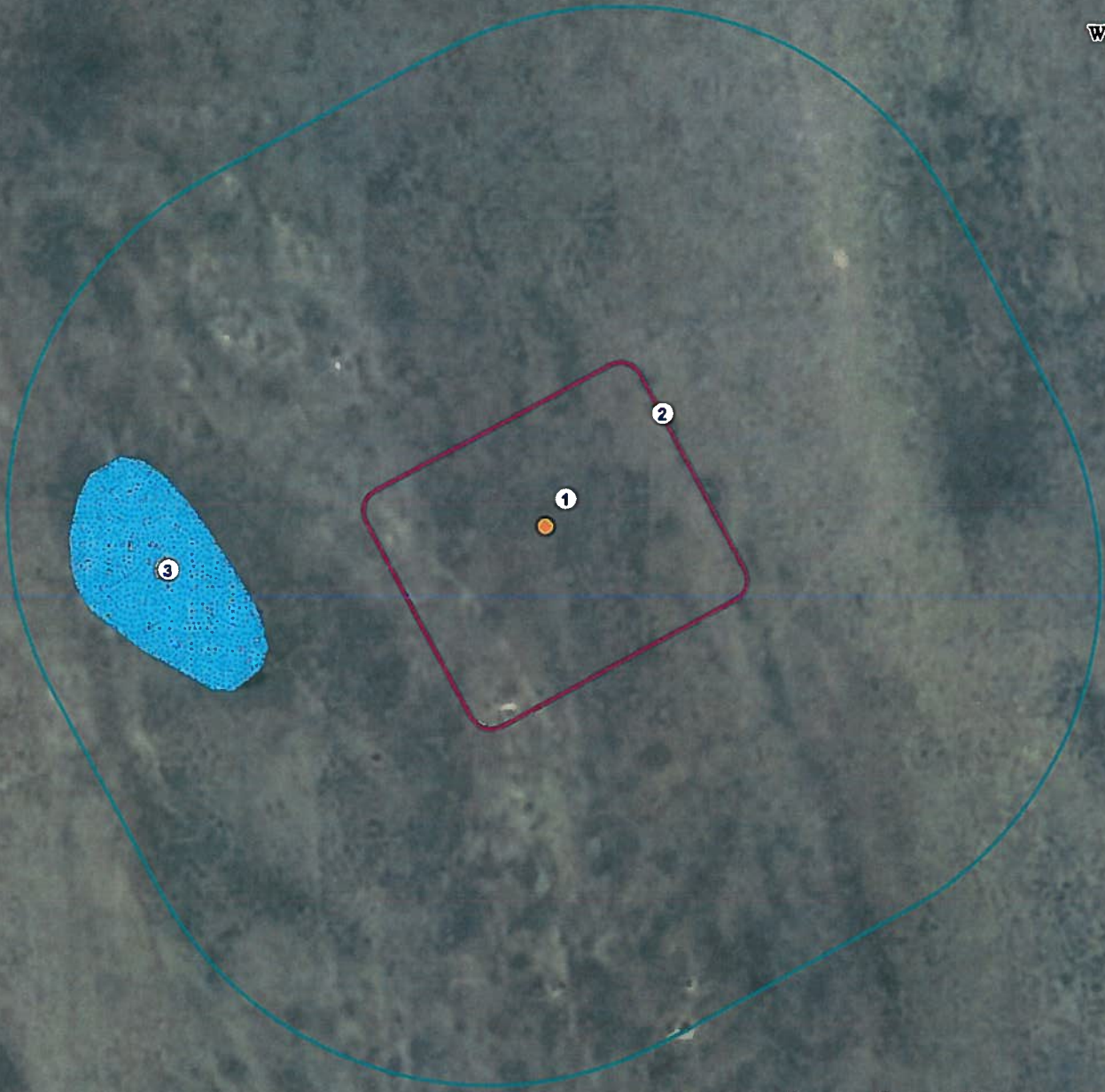


Location Drawing

FROG POND 13-54-12-1

NE¼ NE¼ SECTION 12, TOWNSHIP 13 SOUTH, RANGE 54 WEST OF THE 6TH PRINCIPAL MERIDIAN



0 100 200 400 Feet

1. Proposed Well FROG POND 13-54-12-1.
2. Operational Disturbance Area.
3. Pond is ±335' SW.
Feature was dry at time of mapping.

Legend

- | | |
|------------------|-------------|
| Proposed Well | 400' Radius |
| Disturbance Area | Pond |

Reference Location

** All Measurements are Made from
Reference Well FROG POND 13-54-12-1 **
Lat: 38.933919° Long: -103.388747° (NAD 83)
Elevation: 4839 Feet

Surface Use: Rangeland



Use our resources to find yours!
www.petro-fs.com
(303) 928-7128

Field Date: 09/26/2012
Drafting Date: 10/01/2012
Drafter: PAH
Revision:

Data Sources:
- Aerial courtesy of NAIP (2009)

Prepared for:

PINE RIDGE OIL & GAS, LLC