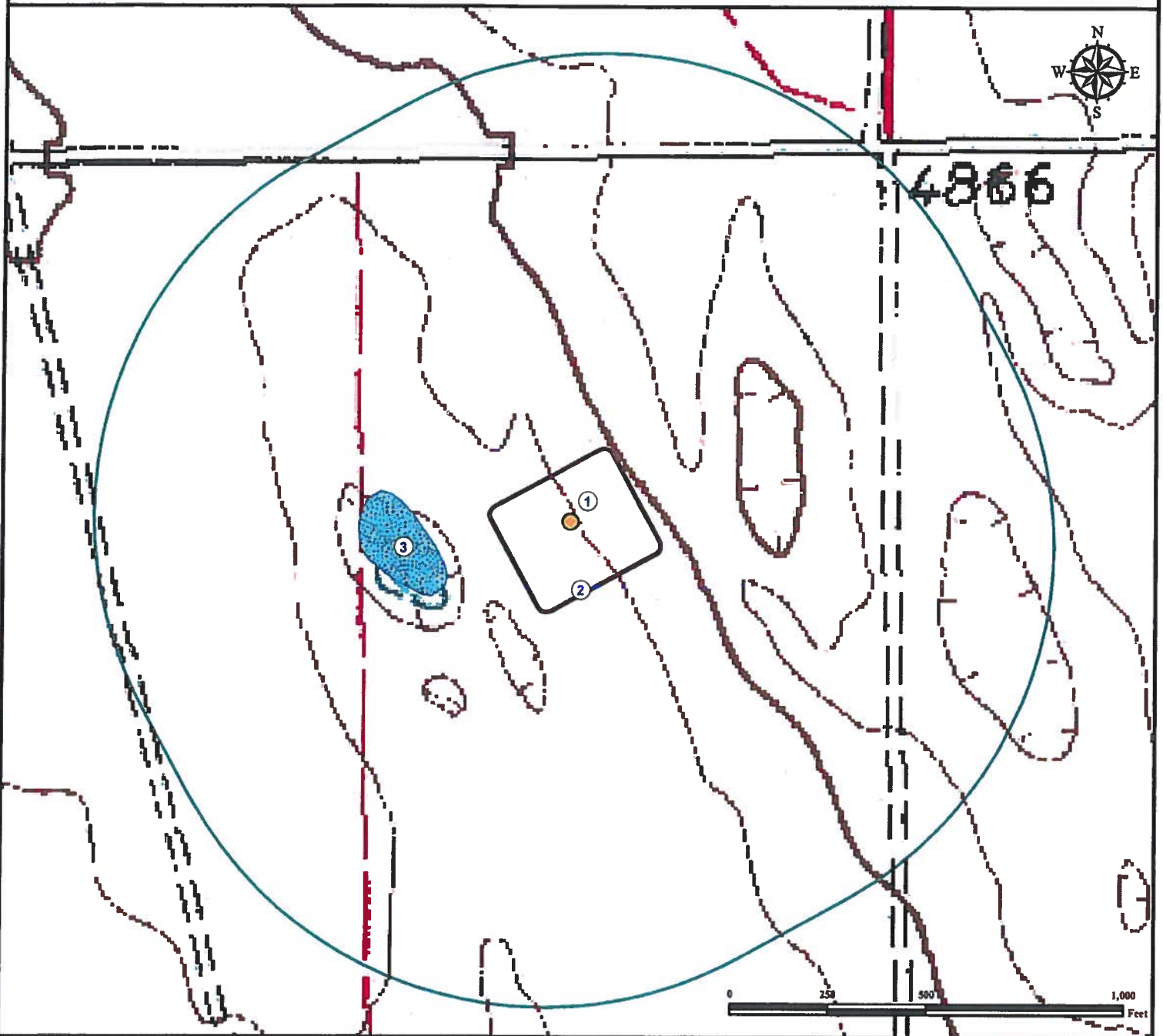


Hydrology Map

FROG POND 13-54-12-1

NE¼ NE¼ SECTION 12, TOWNSHIP 13 SOUTH, RANGE 54 WEST OF THE 6TH PRINCIPAL MERIDIAN




1. Proposed Well FROG POND 13-54-12-1.

3. Pond is ±335' SW.

Feature was dry at time of mapping.

2. Operational Disturbance Area.

Legend

● Proposed Well
 Pond

 Disturbance Area
 1000' Radius

Reference Location

** All Measurements are Made from
 Reference Well FROG POND 13-54-12-1 **

Lat: 38.933919° Long: -103.388747° (NAD 83)
 Elevation: 4839 Feet



Use our resources to find yours!
www.petro-fs.com
 (303) 928-7128

Field Date: 09/26/2012
 Drafting Date: 10/01/2012
 Drafter: PAH
 Revision:

Data Sources:
 - TOPO courtesy of USGS

Prepared for:

PINE RIDGE OIL & GAS, LLC