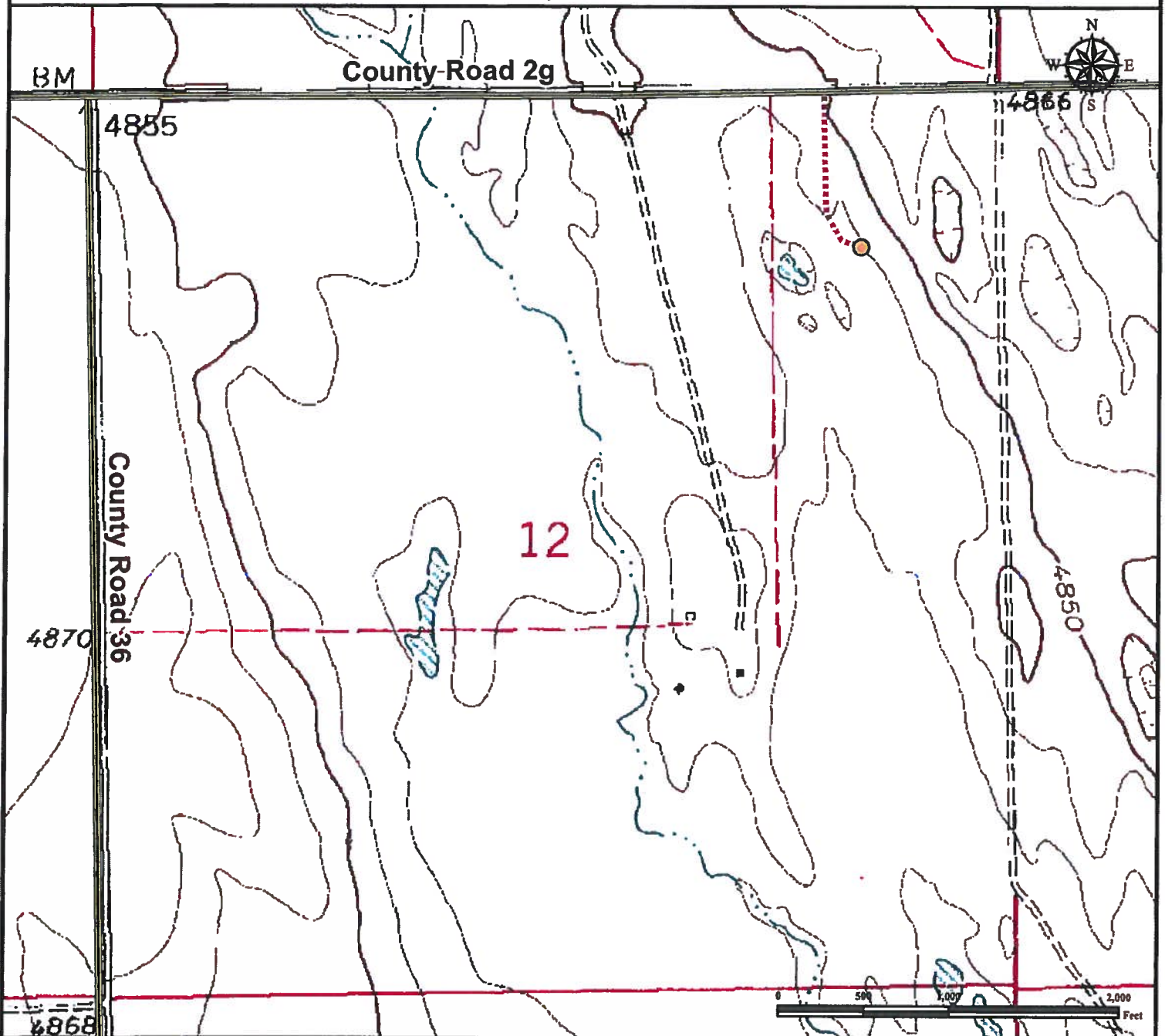


# Access Road Map

## FROG POND 13-54-12-1

NE¼ NE¼ SECTION 12, TOWNSHIP 13 SOUTH, RANGE 54 WEST OF THE 6TH PRINCIPAL MERIDIAN



From Hugo, CO: From the intersection of CO Highway 109/ 3rd Ave. and 4th Street drive southwest on Highway 109/ 3rd Ave  $\pm 7.88$  miles to County Road 32.  
Continue South on County Road 32 and proceed  $\pm 6.02$  miles to County Road 2g.  
Turn Left onto County Road 2g and drive East  $\pm 4.8$  miles to the proposed access road.  
Turn Right and drive South  $\pm 0.20$  miles to proposed well location.  
 Total distance from Hugo, CO to proposed well location is  $\pm 18.90$  miles.

### Legend

● Proposed Well     
 ..... Proposed Access Road     
 == Public Road

### Reference Location

**\*\* All Measurements are Made from Reference Well FROG POND 13-54-12-1 \*\***  
 Lat: 38.933919° Long: -103.388747° (NAD 83)  
 Elevation: 4839 Feet



Use our resources to find yours!  
[www.petro-fs.com](http://www.petro-fs.com)  
 (303) 928-7128

Field Date: 09/26/2012  
 Drafting Date: 10/01/2012  
 Drafter: PAH  
 Revision:

Data Sources:  
 - TOPO courtesy of USGS

Prepared for:

**PINE RIDGE OIL & GAS, LLC**