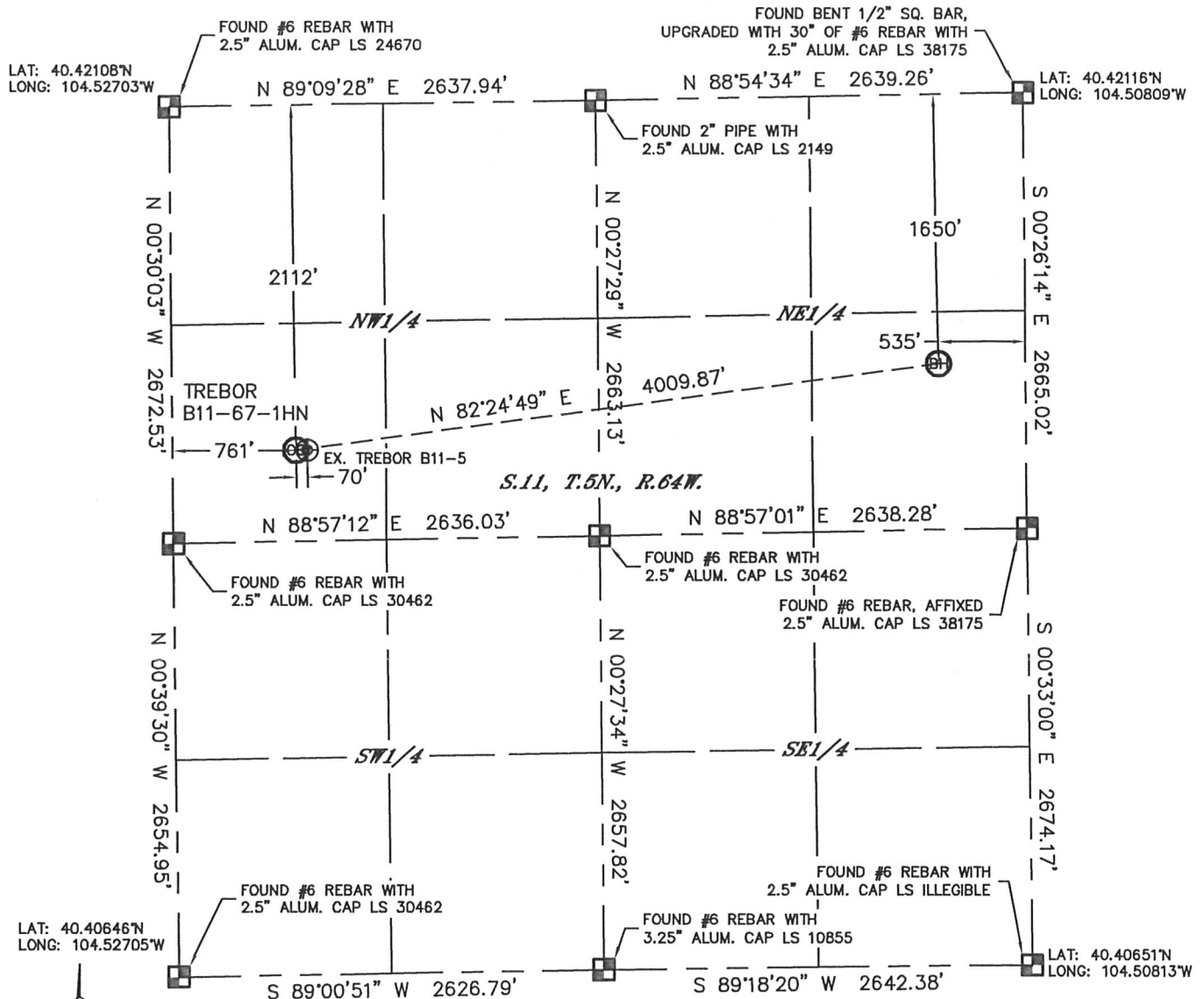


Lat40°, Inc. 1635 Foxtrail Drive, Suite 325 Loveland, CO 970-776-3321

# WELL LOCATION CERTIFICATE

THIS MAP DOES NOT REPRESENT A BOUNDARY SURVEY

SECTION: 11  
TOWNSHIP: 5N  
RANGE: 64W



In accordance with a request from Mike Rodine with Noble Energy Inc. Lat40°, Inc. has determined the surface location of the TREBOR B11-67-1HN to be 2112' from the NORTH line and 761' from the WEST line and the bottom hole to be 1650' from the NORTH line and 535' from the EAST line as measured at right angles from the section lines of Section 11, Township 5 North, Range 64 West of the Sixth Principal Meridian, County of Weld, State of Colorado.

I hereby state that this Well Location Certificate was prepared by me, or under my direct supervision, that the fieldwork was completed on 4/18/2012, for and on behalf of Noble Energy Inc. That this is not a Land Survey Plat or an Improvement Survey Plat, and that it is not to be relied upon for establishment of fence, building, or other future improvement lines.

## NOTE:

- 1) Bearings shown are Grid Bearings of the Colorado State Plane Coordinate System, North Zone, North American Datum 1983/2007. The lineal dimensions as contained herein are based upon the "U.S. Survey Foot."
- 2) Ground elevations are based on an observed GPS elevation (NAVD 1988 DATUM).
- 3) NEAREST EXISTING WELL: TREBOR B11-5, 70'
- 4) IMPROVEMENTS: See LOCATION DRAWING for all visible improvements within 400' of disturbed area.
- 5) SURFACE USE: CROP LAND
- 6) INSTRUMENT OPERATOR: ADAM KELLY

## NOTE

According to Colorado law, you must commence any legal action based upon any defect in this W.L.C. within three years after you discover such defect. In no event, may any action based upon any defect in this survey be commenced more than ten years after the date of the certificate shown hereon. (13-80-105 C.R.S.)

## LEGEND

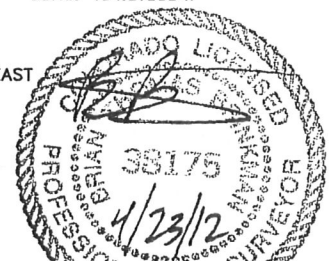
- = ALIQUOT MONUMENT AS DESCRIBED
- = CALCULATED POSITION

## SURFACE LOCATION

LAT: 40.41529°N  
LONG: 104.52432°W  
PDOP: 1.6  
ELEV: 4601'  
1/4, 1/4: SW1/4NW1/4  
NEAREST PROPERTY LINE: 339' EAST

## BOTTOM HOLE

LAT: 40.41662°N  
LONG: 104.51003°W

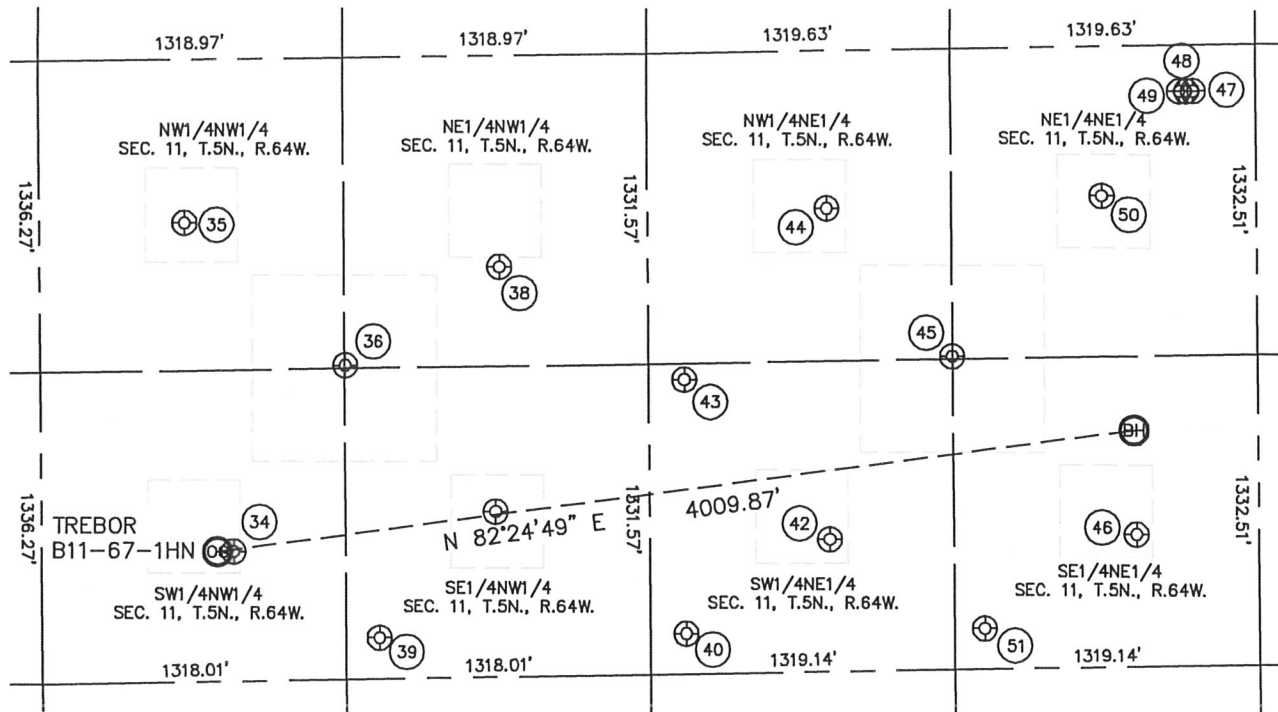


Brian T. Brinkman—On Behalf of Lat40° Inc.  
Colorado Licensed Professional Surveyor  
Land Surveyor No. 38175  
DATE: 4/20/2012  
PROJECT#: 2012029

# SITE SKETCH

## TREBOR B11-67-1HN

SECTION: 11  
TOWNSHIP: 5N  
RANGE: 64W



34

TREBOR B11-5  
SW1/4NW1/4  
2112' FNL  
831' FWL  
LAT-40.41529°N  
LONG-104.52407°W  
PDOP: 1.2  
ELEV: 4602'

35

TREBOR B11-4  
NW1/4NW1/4  
700' FNL  
628' FWL  
LAT-40.41916°N  
LONG-104.52478°W  
PDOP: 2.3  
ELEV: 4608'

36

TREBOR B11-19  
NE1/4NW1/4  
1319' FNL  
1321' FWL  
LAT-40.41747°N  
LONG-104.52230°W  
PDOP: 1.2  
ELEV: 4602'

38

TREBOR B11-3  
NE1/4NW1/4  
907' FNL  
1994' FWL  
LAT-40.41861°N  
LONG-104.51988°W  
PDOP: 1.2  
ELEV: 4605'

39

TREBOR B11-20  
SE1/4NW1/4  
2490' FNL  
1462' FWL  
LAT-40.41426°N  
LONG-104.52180°W  
PDOP: 1.2  
ELEV: 4599'

40

TREBOR B11-21  
SW1/4NE1/4  
2490' FNL  
2483' FEL  
LAT-40.41427°N  
LONG-104.51703°W  
PDOP: 1.1  
ELEV: 4598'

42

TREBOR B11-7  
SW1/4NE1/4  
2096' FNL  
1858' FEL  
LAT-40.41537°N  
LONG-104.51478°W  
PDOP: 1.2  
ELEV: 4601'

43

TREBOR B11-18  
SW1/4NE1/4  
1401' FNL  
2484' FEL  
LAT-40.41726°N  
LONG-104.51702°W  
PDOP: 1.2  
ELEV: 4602'

44

TREBOR B11-2  
NW1/4NE1/4  
677' FNL  
1862' FEL  
LAT-40.41926°N  
LONG-104.51478°W  
PDOP: 1.6  
ELEV: 4605'

45

TREBOR B11-17  
NW1/4NE1/4  
1320' FNL  
1320' FEL  
LAT-40.41751°N  
LONG-104.51284°W  
PDOP: 1.1  
ELEV: 4603'

46

TREBOR B11-8  
SE1/4NE1/4  
2096' FNL  
528' FEL  
LAT-40.41540°N  
LONG-104.51001°W  
PDOP: 1.1  
ELEV: 4604'

47

WACKER B12-69HN  
NE1/4NE1/4  
198' FNL  
271' FEL  
LAT-40.42061°N  
LONG-104.50906°W  
PDOP: 1.4  
ELEV: 4598'

48

WACKER B1-79HN  
NE1/4NE1/4  
199' FNL  
300' FEL  
LAT-40.42061°N  
LONG-104.50917°W  
PDOP: 1.4  
ELEV: 4598'

49

WACKER B11-69HN  
NE1/4NE1/4  
199' FNL  
330' FEL  
LAT-40.42061°N  
LONG-104.50927°W  
PDOP: 1.9  
ELEV: 4598'

50

TREBOR B11-1  
NE1/4NE1/4  
643' FNL  
665' FEL  
LAT-40.41938°N  
LONG-104.51048°W  
PDOP: 1.6  
ELEV: 4596'

51

TREBOR B11-22  
SE1/4NE1/4  
2489' FNL  
1188' FEL  
LAT-40.41430°N  
LONG-104.51238°W  
PDOP: 1.2  
ELEV: 4600'

