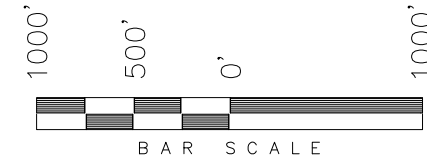
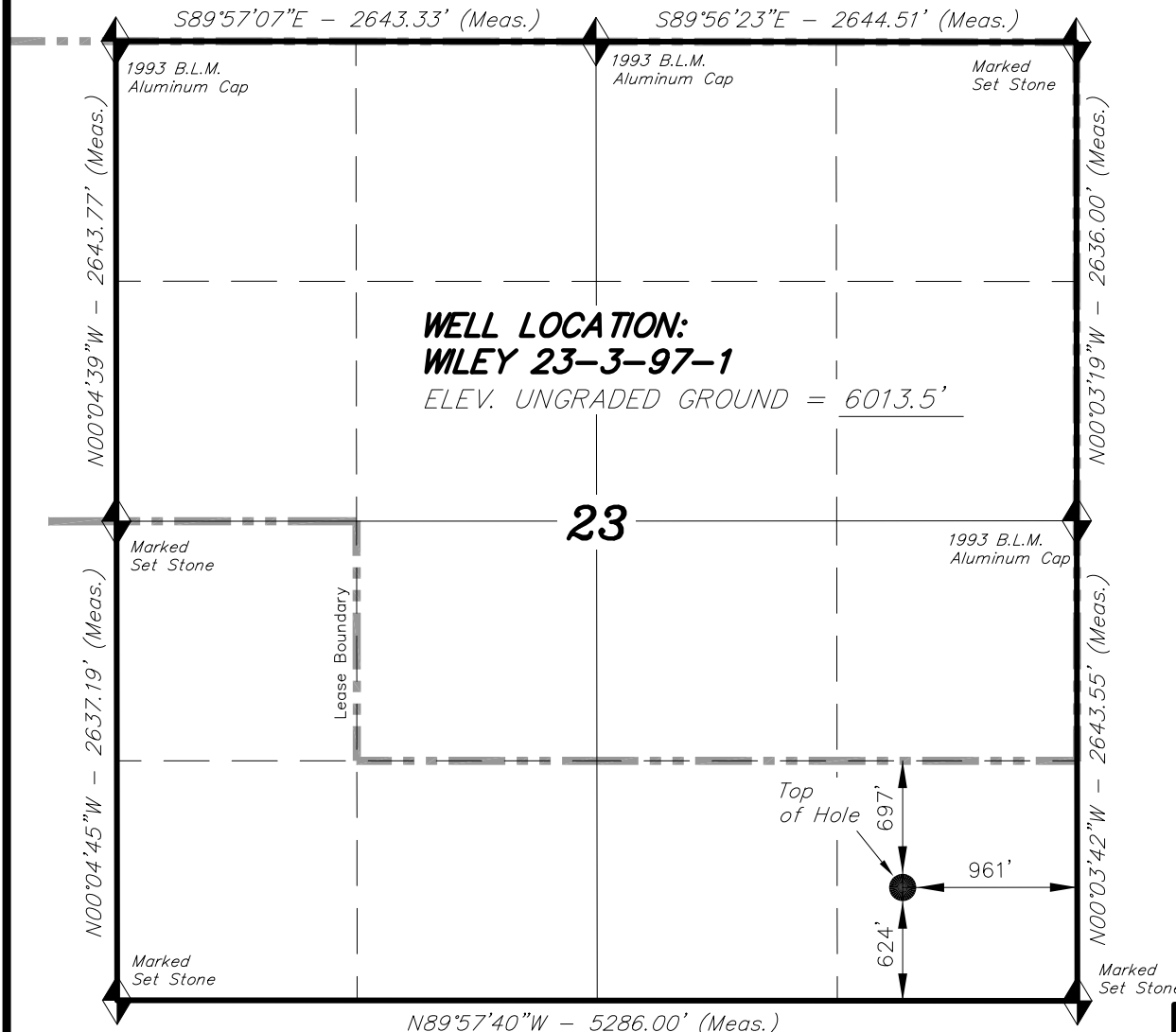


T3N, R97W, 6th P.M.

ENDEAVOUR OPERATING CORPORATION

WELL LOCATION, WILEY 23-3-97-1,
LOCATED AS SHOWN IN THE SE 1/4 SE
1/4 OF SECTION 23, T3N, R97W, 6TH
P.M. RIO BLANCO COUNTY, COLORADO.

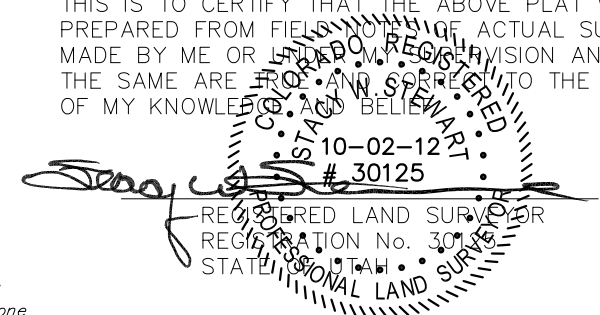


NOTES:

1. Well footages are measured at right angles to the Section Lines.
2. Bearings are based on Global Positioning Satellite observations.
3. G.P.S. Operator: K. Stewart, (PDOP) = 1.5



THIS IS TO CERTIFY THAT THE ABOVE PLAT WAS PREPARED FROM FIELD NOTES OF ACTUAL SURVEYS MADE BY ME OR UNDER MY SUPERVISION AND THAT THE SAME ARE TRUE AND CORRECT TO THE BEST OF MY KNOWLEDGE AND BELIEF.



◆ = SECTION CORNERS LOCATED

BASIS OF ELEV; U.S.G.S. 7-1/2 min QUAD
(Indian Valley)

NAD 83 (SURFACE LOCATION)	
LATITUDE	= 40°12'32.01" (40.208891°)
LONGITUDE	= 108°14'22.20" (108.239501°)

TRI STATE LAND SURVEYING & CONSULTING

180 NORTH VERNAL AVE. - VERNAL, UTAH 84078
(435) 781-2501

DATE SURVEYED: 08-28-12	SURVEYED BY: K.S.	SHEET 1
DATE DRAWN: 08-31-12	DRAWN BY: M.W.	
REVISED: 10-02-12 M.W.	SCALE: 1" = 1000'	