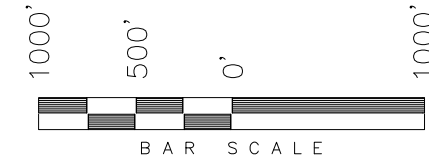


Section Corner  
(Proportioned using  
Double Proportion  
Method - Not Set)

**T3N, R97W, 6th P.M.**

**ENDEAVOUR OPERATING CORPORATION**

WELL LOCATION, WILEY 22-3-97-2,  
LOCATED AS SHOWN IN THE NW 1/4 SE  
1/4 OF SECTION 22, T3N, R97W, 6TH  
P.M. RIO BLANCO COUNTY, COLORADO.



**NOTES:**

1. Well footages are measured at right angles to the Section Lines.
2. Bearings are based on Global Positioning Satellite observations.
3. G.P.S. Operator: K. Stewart, (PDOP) = 1.2

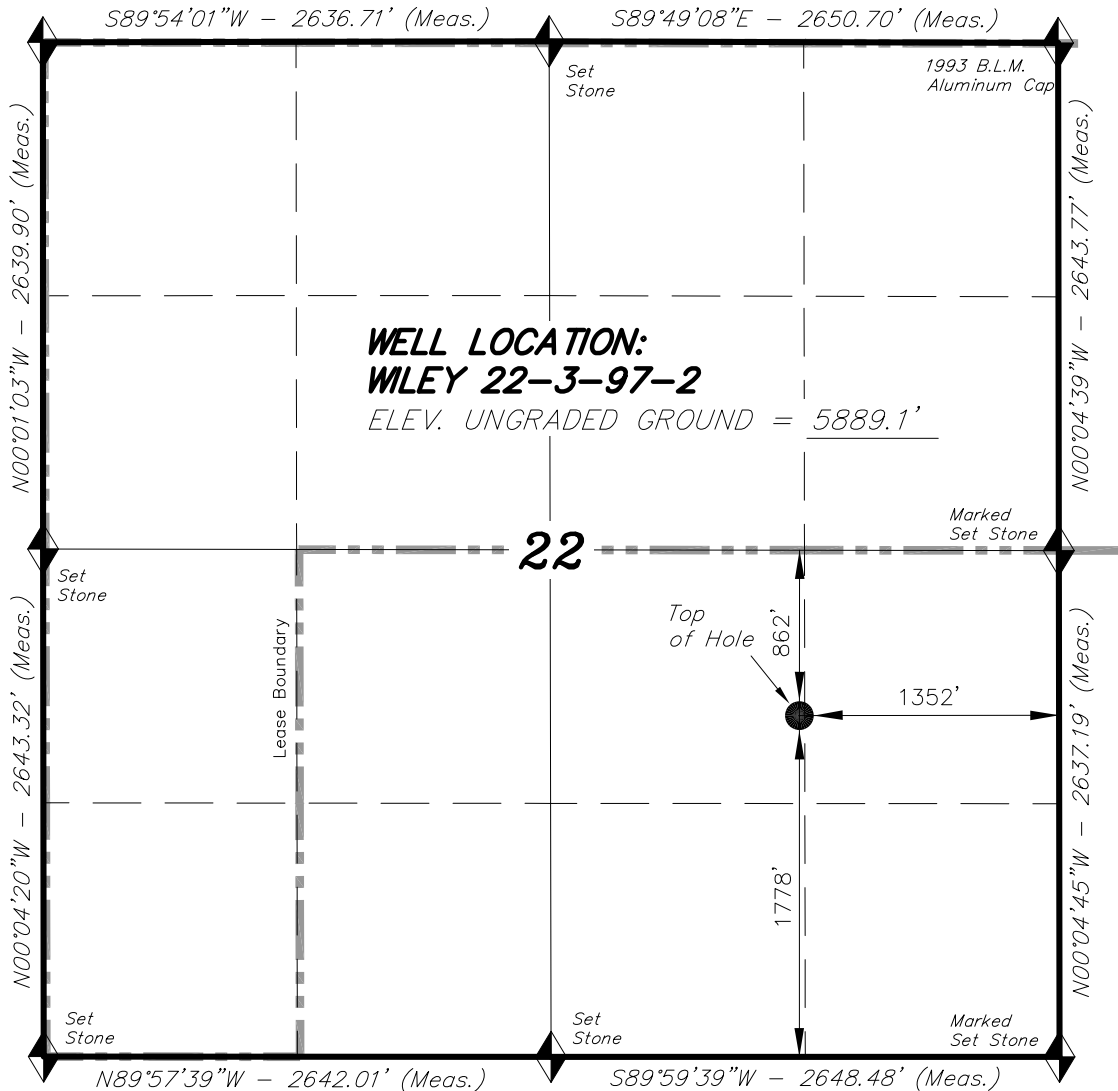
THIS IS TO CERTIFY THAT THE ABOVE PLAT WAS  
PREPARED FROM FIELD NOTES OF ACTUAL SURVEYS  
MADE BY ME OR UNDER MY SUPERVISION AND THAT  
THE SAME ARE TRUE AND CORRECT TO THE BEST  
OF MY KNOWLEDGE AND BELIEF.



**TRI STATE LAND SURVEYING & CONSULTING**

180 NORTH VERNAL AVE. - VERNAL, UTAH 84078  
(435) 781-2501

DATE SURVEYED: 08-27-12	SURVEYED BY: K.S.	SHEET 1
DATE DRAWN: 08-30-12	DRAWN BY: M.W.	
REVISED: 10-02-12 M.W.	SCALE: 1" = 1000'	



◆ = SECTION CORNERS LOCATED

BASIS OF ELEV; U.S.G.S. 7-1/2 min QUAD  
(Smizer Gulch)

NAD 83 (SURFACE LOCATION)	
LATITUDE =	40°12'43.47" (40.212075°)
LONGITUDE =	108°15'35.37" (108.259826°)