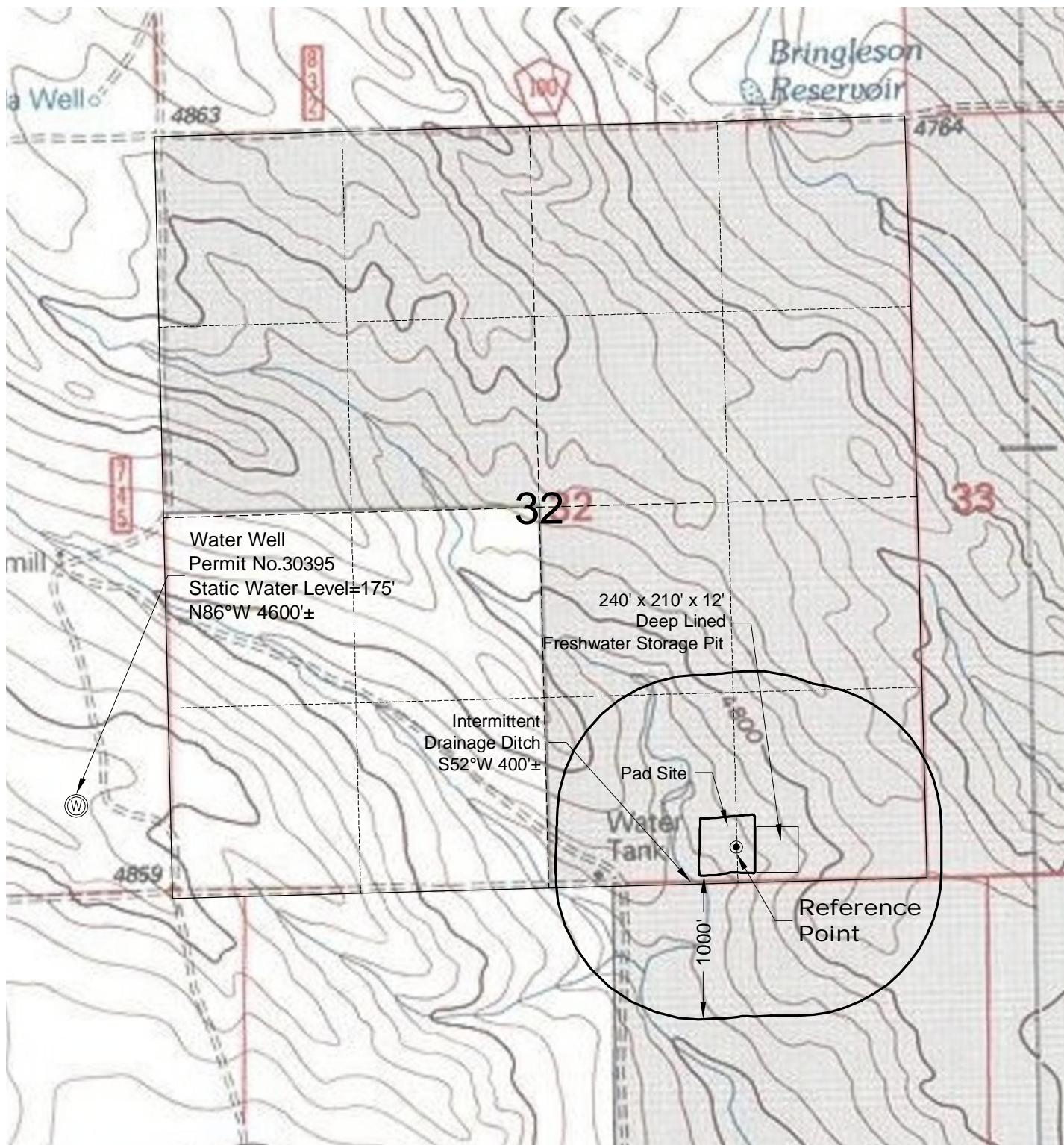


# HYDROLOGY MAP



Water Well  
Permit No. 30395  
Static Water Level = 175'  
N86°W 4600'±

240' x 210' x 12'  
Deep Lined  
Freshwater Storage Pit

Intermittent  
Drainage Ditch  
S52°W 400'±

Pad Site

Water  
Tank

Reference  
Point



North

0 1000 2000

Graphic Scale in Feet  
1" = 1000'



LAND SURVEYING AND MAPPING  
LAFAYETTE - WINTER PARK  
Ph 303 666 0379 Fx 303 665 6320

CARRIZO OIL & GAS, INC  
BRINGLESON 1-32-9-58 PAD

SW1/4 SE1/4 SECTION 32 T9N R58W  
6th PM WELD COUNTY COLORADO

9/18/12