

DRILL STEM TEST REPORT

Prepared For: **Mull Drilling Company**

1700N Waterfront Pkwy
B# 1200
Wichita, KS 67206

ATTN: Phil Askey

Champlin Figgins #3

27-13-34 Cheyenne, CO

Start Date: 2012.08.28 @ 21:50:19

End Date: 2012.08.29 @ 06:45:04

Job Ticket #: 48293 DST #: 1

Trilobite Testing, Inc

PO Box 362 Hays, KS 67601

ph: 785-625-4778 fax: 785-625-5620

Printed: 2012.09.11 @ 08:49:32



TRILOBITE
TESTING, INC.

DRILL STEM TEST REPORT

Mull Drilling Company

1700N Waterfront Pkwy
B# 1200
Wichita, KS 67206
ATTN: Phil Askey

27-13-34 Cheyenne, CO

Champlin Figgins #3

Job Ticket: 48293

DST#: 1

Test Start: 2012.08.28 @ 21:50:19

GENERAL INFORMATION:

Formation: **Shawnee**

Deviated: No Whipstock: 0.00 ft (KB)

Time Tool Opened: 00:19:04

Time Test Ended: 06:45:04

Test Type: Conventional Bottom Hole (Initial)

Tester: Shane McBride

Unit No: 55

Interval: **4204.00 ft (KB) To 4222.00 ft (KB) (TVD)**

Total Depth: 4222.00 ft (KB) (TVD)

Hole Diameter: 7.88 inches Hole Condition: Fair

Reference Elevations: 4291.00 ft (KB)

4280.00 ft (CF)

KB to GR/CF: 11.00 ft

Serial #: 8368 Inside

Press@RunDepth: 172.51 psig @ 4205.00 ft (KB)

Start Date: 2012.08.28

End Date:

2012.08.29

Start Time: 21:50:19

End Time:

06:22:04

Capacity: 8000.00 psig

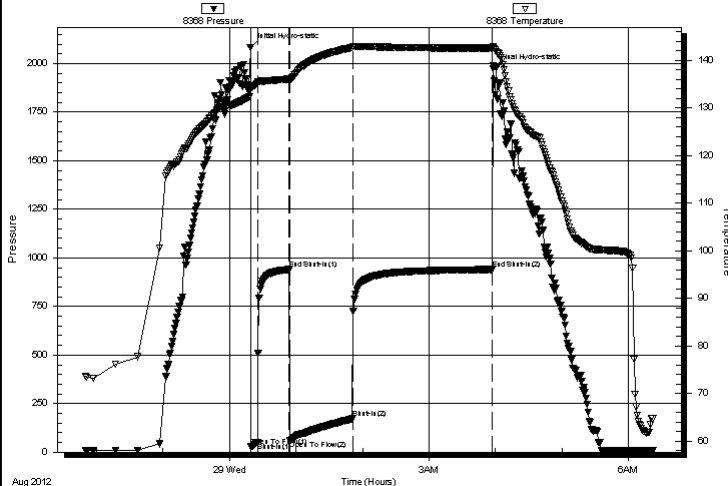
Last Calib.: 2012.08.29

Time On Btm: 2012.08.29 @ 00:18:49

Time Off Btm: 2012.08.29 @ 03:58:04

TEST COMMENT: 6" blow
No return
B.O.B. in 16 min.
5" return blow

Pressure vs. Time



PRESSURE SUMMARY

Time (Min.)	Pressure (psig)	Temp (deg F)	Annotation
0	2083.95	134.49	Initial Hydro-static
1	30.86	133.89	Open To Flow (1)
7	51.92	135.12	Shut-In(1)
35	940.06	136.09	End Shut-In(1)
36	59.05	135.59	Open To Flow (2)
93	172.51	142.71	Shut-In(2)
218	940.36	142.58	End Shut-In(2)
220	1974.48	142.71	Final Hydro-static

Recovery

Length (ft)	Description	Volume (bbl)
325.00	g o & m c w 20g 5o 10m 65w	2.94
5.00	c g o 15g 85o	0.07
0.00	750' gas in pipe	0.00

Gas Rates

	Choke (inches)	Pressure (psig)	Gas Rate (Mcf/d)
--	----------------	-----------------	------------------



TRILOBITE
TESTING, INC.

DRILL STEM TEST REPORT

Mull Drilling Company

1700N Waterfront Pkwy
B# 1200
Wichita, KS 67206
ATTN: Phil Askey

27-13-34 Cheyenne, CO

Champlin Figgins #3

Job Ticket: 48293

DST#: 1

Test Start: 2012.08.28 @ 21:50:19

GENERAL INFORMATION:

Formation: **Shawnee**

Deviated: No Whipstock: 0.00 ft (KB)

Time Tool Opened: 00:19:04

Time Test Ended: 06:45:04

Test Type: Conventional Bottom Hole (Initial)

Tester: Shane McBride

Unit No: 55

Interval: 4204.00 ft (KB) To 4222.00 ft (KB) (TVD)

Total Depth: 4222.00 ft (KB) (TVD)

Hole Diameter: 7.88 inches Hole Condition: Fair

Reference Elevations: 4291.00 ft (KB)

4280.00 ft (CF)

KB to GR/CF: 11.00 ft

Serial #: 6667 Outside

Press @ Run Depth: psig @ 4205.00 ft (KB)

Start Date: 2012.08.28

End Date:

2012.08.29

Start Time: 21:50:21

End Time:

06:22:06

Capacity: 8000.00 psig

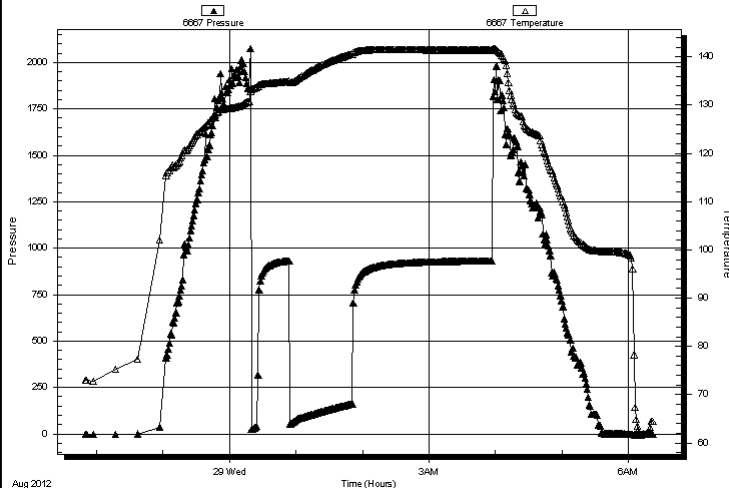
Last Calib.: 1899.12.30

Time On Btm:

Time Off Btm:

TEST COMMENT: 6" blow
No return
B.O.B. in 16 min.
5" return blow

Pressure vs. Time



PRESSURE SUMMARY

Time (Min.)	Pressure (psig)	Temp (deg F)	Annotation
-------------	-----------------	--------------	------------

Recovery

Length (ft)	Description	Volume (bbl)
325.00	g o & m c w 20g 5o 10m 65w	2.94
5.00	c g o 15g 85o	0.07
0.00	750' gas in pipe	0.00

Gas Rates

	Choke (inches)	Pressure (psig)	Gas Rate (Mcf/d)
--	----------------	-----------------	------------------



TRILOBITE
TESTING, INC.

DRILL STEM TEST REPORT

TOOL DIAGRAM

Mull Drilling Company

27-13-34 Cheyenne, CO

1700N Waterfront Pkwy
B# 1200
Wichita, KS 67206
ATTN: Phil Askey

Champlin Figgins #3

Job Ticket: 48293

DST#: 1

Test Start: 2012.08.28 @ 21:50:19

Tool Information

Drill Pipe:	Length: 4012.00 ft	Diameter: 3.80 inches	Volume: 56.28 bbl	Tool Weight:	1500.00 lb
Heavy Wt. Pipe:	Length: 0.00 ft	Diameter: 0.00 inches	Volume: 0.00 bbl	Weight set on Packer:	25000.00 lb
Drill Collar:	Length: 178.00 ft	Diameter: 2.25 inches	Volume: 0.88 bbl	Weight to Pull Loose:	80000.00 lb
		Total Volume:	57.16 bbl	Tool Chased	0.00 ft
Drill Pipe Above KB:	6.00 ft			String Weight: Initial	64000.00 lb
Depth to Top Packer:	4204.00 ft			Final	66000.00 lb
Depth to Bottom Packer:	ft				
Interval between Packers:	18.00 ft				
Tool Length:	38.00 ft				
Number of Packers:	2	Diameter:	6.75 inches		
Tool Comments:					

Tool Description	Length (ft)	Serial No.	Position	Depth (ft)	Accum. Lengths
------------------	-------------	------------	----------	------------	----------------

Change Over Sub	1.00			4185.00	
Shut In Tool	5.00			4190.00	
Hydraulic tool	5.00			4195.00	
Packer	5.00			4200.00	20.00 Bottom Of Top Packer
Packer	4.00			4204.00	
Stubb	1.00			4205.00	
Recorder	0.00	8368	Inside	4205.00	
Recorder	0.00	6667	Outside	4205.00	
Perforations	12.00			4217.00	
Bullnose	5.00			4222.00	18.00 Bottom Packers & Anchor
Total Tool Length:	38.00				



TRILOBITE
TESTING, INC.

DRILL STEM TEST REPORT

FLUID SUMMARY

Mull Drilling Company

27-13-34 Cheyenne, CO

1700N Waterfront Pkwy

Champlin Figgins #3

B# 1200

Job Ticket: 48293

DST#: 1

Wichita, KS 67206

Test Start: 2012.08.28 @ 21:50:19

ATTN: Phil Askey

Mud and Cushion Information

Mud Type: Gel Chem

Cushion Type:

Oil API:

0 deg API

Mud Weight: 9.00 lb/gal

Cushion Length:

ft

Water Salinity:

25500 ppm

Viscosity: 60.00 sec/qt

Cushion Volume:

bbl

Water Loss: 7.19 in³

Gas Cushion Type:

Resistivity: 0.00 ohm.m

Gas Cushion Pressure:

psig

Salinity: 1800.00 ppm

Filter Cake: 1.00 inches

Recovery Information

Recovery Table

Length ft	Description	Volume bbl
325.00	g o & m c w 20g 5o 10m 65w	2.937
5.00	c g o 15g 85o	0.070
0.00	750' gas in pipe	0.000

Total Length: 330.00 ft

Total Volume: 3.007 bbl

Num Fluid Samples: 0

Num Gas Bombs: 0

Serial #:

Laboratory Name:

Laboratory Location:

Recovery Comments: rw .270 @ 66°F = 25,500 chlor

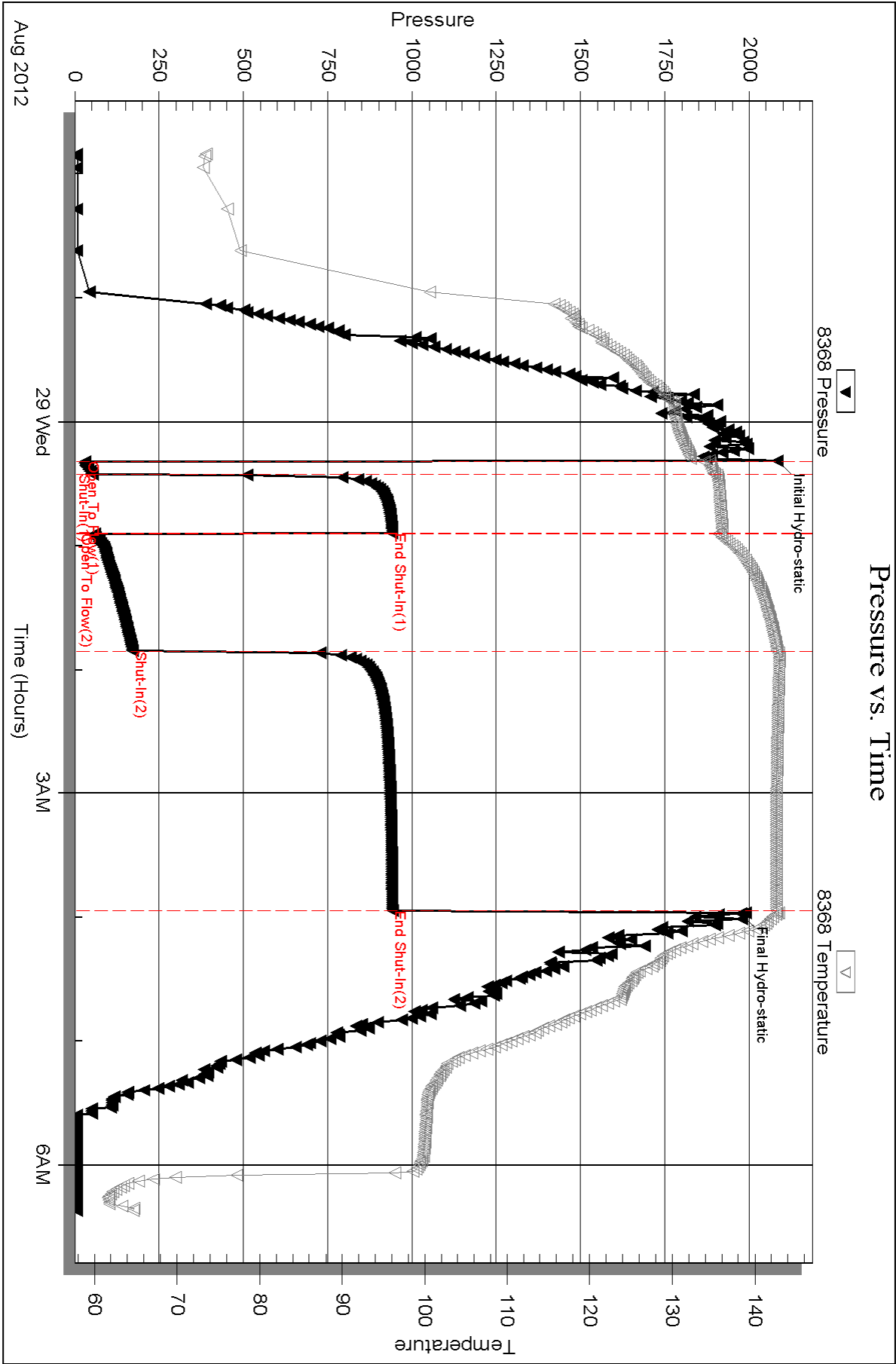
Serial #: 8368

Inside

Mull Drilling Company

Champlin Figins #3

DST Test Number: 1

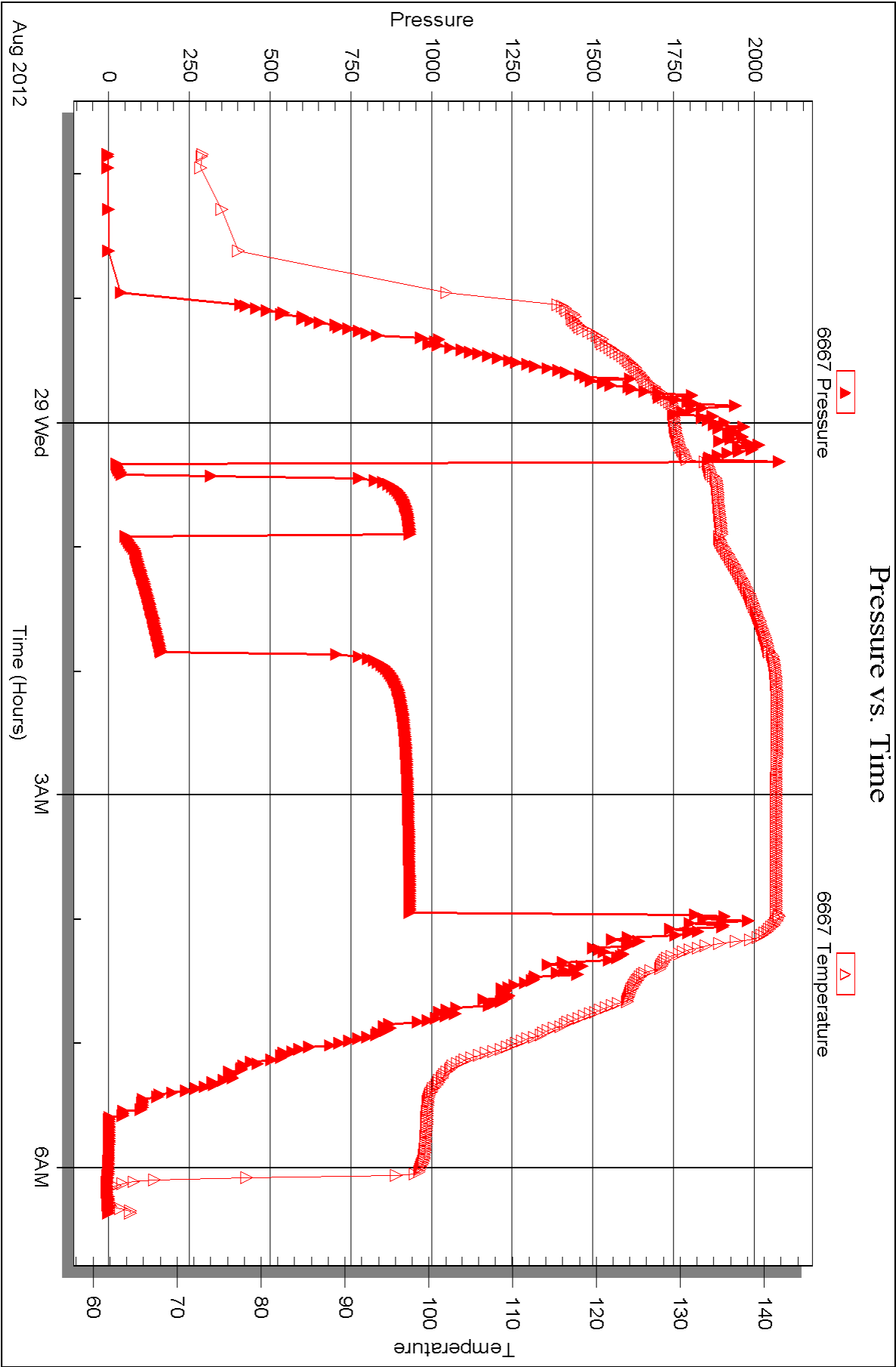


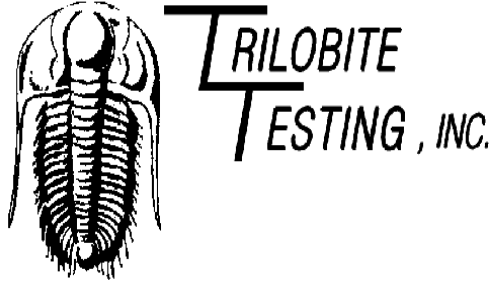
Serial #: 6667

Outside Mull Drilling Company

Champlin Figins #3

DST Test Number: 1





DRILL STEM TEST REPORT

Prepared For: **Mull Drilling Company**

1700N Waterfront Pkwy
B# 1200
Wichita, KS 67206

ATTN: Phil Askey

Champlin Figgins #3

27-13-34 Cheyenne, CO

Start Date: 2012.09.03 @ 07:18:00

End Date: 2012.09.03 @ 14:04:39

Job Ticket #: 48838 DST #: 2

Trilobite Testing, Inc

PO Box 362 Hays, KS 67601

ph: 785-625-4778 fax: 785-625-5620

Printed: 2012.09.11 @ 08:48:46



TRILOBITE
TESTING, INC.

DRILL STEM TEST REPORT

Mull Drilling Company

1700N Waterfront Pkwy
B# 1200
Wichita, KS 67206
ATTN: Phil Askey

27-13-34 Cheyenne, CO

Champlin Figgins #3

Job Ticket: 48838

DST#: 2

Test Start: 2012.09.03 @ 07:18:00

GENERAL INFORMATION:

Formation: **Mississippi / Sperge**

Deviated: No Whipstock: 0.00 ft (KB)

Time Tool Opened: 09:39:40

Time Test Ended: 14:04:39

Test Type: Conventional Bottom Hole (Initial)

Tester: Will MacLean

Unit No: 40

Interval: 5410.00 ft (KB) To 5472.00 ft (KB) (TVD)

Total Depth: 5472.00 ft (KB) (TVD)

Hole Diameter: 7.88 inches Hole Condition: Good

Reference Elevations: 4291.00 ft (KB)

4280.00 ft (CF)

KB to GR/CF: 11.00 ft

Serial #: 8674 Inside

Press @ Run Depth: 40.60 psig @ 5411.00 ft (KB)

Start Date: 2012.09.03

End Date:

2012.09.03

Start Time: 07:18:00

End Time:

14:04:39

Capacity: 8000.00 psig

Last Calib.: 2012.09.03

Time On Btm: 2012.09.03 @ 09:39:25

Time Off Btm: 2012.09.03 @ 11:48:09

TEST COMMENT: IF- Weak Surface Blow 1/4"

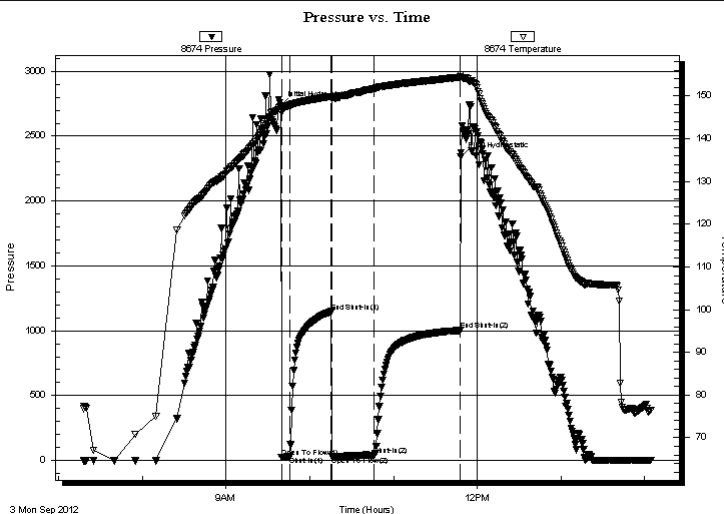
ISI- No Blow

FF- Very Weak Surface Blow Died in 8 min

FSI- No Blow

PRESSURE SUMMARY

Time (Min.)	Pressure (psig)	Temp (deg F)	Annotation
0	2738.07	147.79	Initial Hydro-static
1	25.81	146.21	Open To Flow (1)
6	28.36	147.77	Shut-In(1)
36	1146.96	149.93	End Shut-In(1)
37	30.21	149.29	Open To Flow (2)
67	40.60	151.75	Shut-In(2)
129	1002.11	154.42	End Shut-In(2)
129	2341.53	154.95	Final Hydro-static



Recovery

Length (ft)	Description	Volume (bbl)
10.00	100% mud	0.05

Gas Rates

	Choke (inches)	Pressure (psig)	Gas Rate (Mcf/d)
--	----------------	-----------------	------------------



**TRILOBITE
TESTING, INC.**

DRILL STEM TEST REPORT

Mull Drilling Company

1700N Waterfront Pkwy
B# 1200
Wichita, KS 67206
ATTN: Phil Askey

27-13-34 Cheyenne, CO

Champlin Figgins #3

Job Ticket: 48838

DST#: 2

Test Start: 2012.09.03 @ 07:18:00

GENERAL INFORMATION:

Formation: **Mississippi / Sperge**

Deviated: No Whipstock: 0.00 ft (KB)

Time Tool Opened: 09:39:40

Time Test Ended: 14:04:39

Test Type: Conventional Bottom Hole (Initial)

Tester: Will MacLean

Unit No: 40

Interval: 5410.00 ft (KB) To 5472.00 ft (KB) (TVD)

Total Depth: 5472.00 ft (KB) (TVD)

Hole Diameter: 7.88 inches Hole Condition: Good

Reference Elevations: 4291.00 ft (KB)

4280.00 ft (CF)

KB to GR/CF: 11.00 ft

Serial #: 8355 Outside

Press@RunDepth: psig @ 5411.00 ft (KB)

Start Date: 2012.09.03

End Date:

2012.09.03

Start Time: 07:17:15

End Time:

14:05:09

Capacity: 8000.00 psig

Last Calib.:

2012.09.03

Time On Btm:

Time Off Btm:

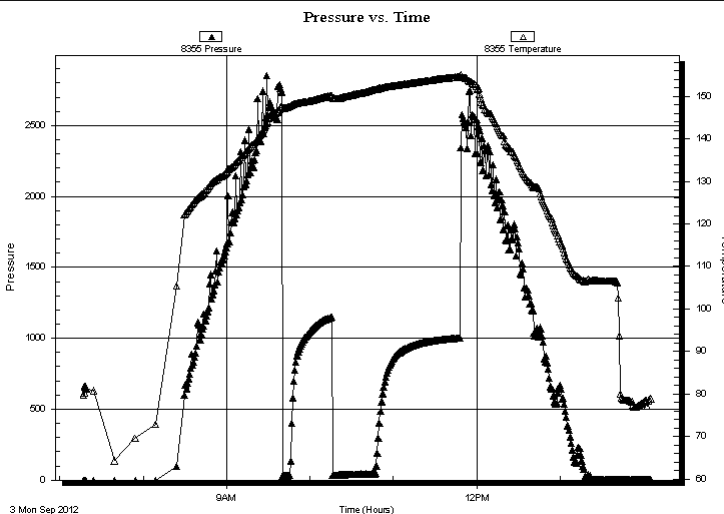
TEST COMMENT: IF- Weak Surface Blow 1/4"

ISI- No Blow

FF- Very Weak Surface Blow Died in 8 min

FSI- No Blow

PRESSURE SUMMARY



Time
(Min.)

Pressure
(psig)

Temp
(deg F)

Annotation

Recovery

Length (ft)	Description	Volume (bbl)
10.00	100% mud	0.05

Gas Rates

	Choke (inches)	Pressure (psig)	Gas Rate (Mcf/d)
--	----------------	-----------------	------------------



TRILOBITE
TESTING, INC.

DRILL STEM TEST REPORT

TOOL DIAGRAM

Mull Drilling Company

27-13-34 Cheyenne, CO

1700N Waterfront Pkwy

Champlin Figgins #3

B# 1200

Job Ticket: 48838

DST#: 2

Wichita, KS 67206

Test Start: 2012.09.03 @ 07:18:00

ATTN: Phil Askey

Tool Information

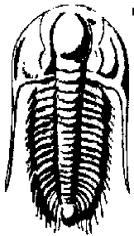
Drill Pipe:	Length:	5211.00 ft	Diameter:	3.80 inches	Volume:	73.10 bbl	Tool Weight:	2000.00 lb
Heavy Wt. Pipe:	Length:	0.00 ft	Diameter:	0.00 inches	Volume:	0.00 bbl	Weight set on Packer:	22000.00 lb
Drill Collar:	Length:	178.00 ft	Diameter:	2.25 inches	Volume:	0.88 bbl	Weight to Pull Loose:	4000.00 lb
					Total Volume:	73.98 bbl	Tool Chased	ft
Drill Pipe Above KB:		7.00 ft					String Weight: Initial	80000.00 lb
Depth to Top Packer:		5410.00 ft					Final	80000.00 lb
Depth to Bottom Packer:		ft						
Interval between Packers:		62.00 ft						
Tool Length:		90.00 ft						
Number of Packers:		2	Diameter:	6.75 inches				
Tool Comments:								

Tool Description

Length (ft) Serial No. Position Depth (ft) Accum. Lengths

Change Over Sub	1.00			5383.00		
Shut In Tool	5.00			5388.00		
Hydraulic tool	5.00			5393.00		
Jars	5.00			5398.00		
Safety Joint	3.00			5401.00		
Packer	5.00			5406.00	28.00	Bottom Of Top Packer
Packer	4.00			5410.00		
Stubb	1.00			5411.00		
Recorder	0.00	8674	Inside	5411.00		
Recorder	0.00	8355	Outside	5411.00		
Perforations	25.00			5436.00		
Change Over Sub	1.00			5437.00		
Drill Pipe	31.00			5468.00		
Change Over Sub	1.00			5469.00		
Bullnose	3.00			5472.00	62.00	Bottom Packers & Anchor

Total Tool Length: 90.00



TRILOBITE
TESTING, INC.

DRILL STEM TEST REPORT

FLUID SUMMARY

Mull Drilling Company

27-13-34 Cheyenne, CO

1700N Waterfront Pkwy

Champlin Figgins #3

B# 1200

Job Ticket: 48838

DST#: 2

Wichita, KS 67206

Test Start: 2012.09.03 @ 07:18:00

ATTN: Phil Askey

Mud and Cushion Information

Mud Type: Gel Chem

Cushion Type:

Oil API:

deg API

Mud Weight: 9.00 lb/gal

Cushion Length:

ft

Water Salinity:

ppm

Viscosity: 60.00 sec/qt

Cushion Volume:

bbl

Water Loss: 7.96 in³

Gas Cushion Type:

Resistivity: ohm.m

Gas Cushion Pressure:

psig

Salinity: 1500.00 ppm

Filter Cake: 1.00 inches

Recovery Information

Recovery Table

Length ft	Description	Volume bbl
10.00	100% mud	0.049

Total Length: 10.00 ft

Total Volume: 0.049 bbl

Num Fluid Samples: 0

Num Gas Bombs: 0

Serial #:

Laboratory Name:

Laboratory Location:

Recovery Comments:

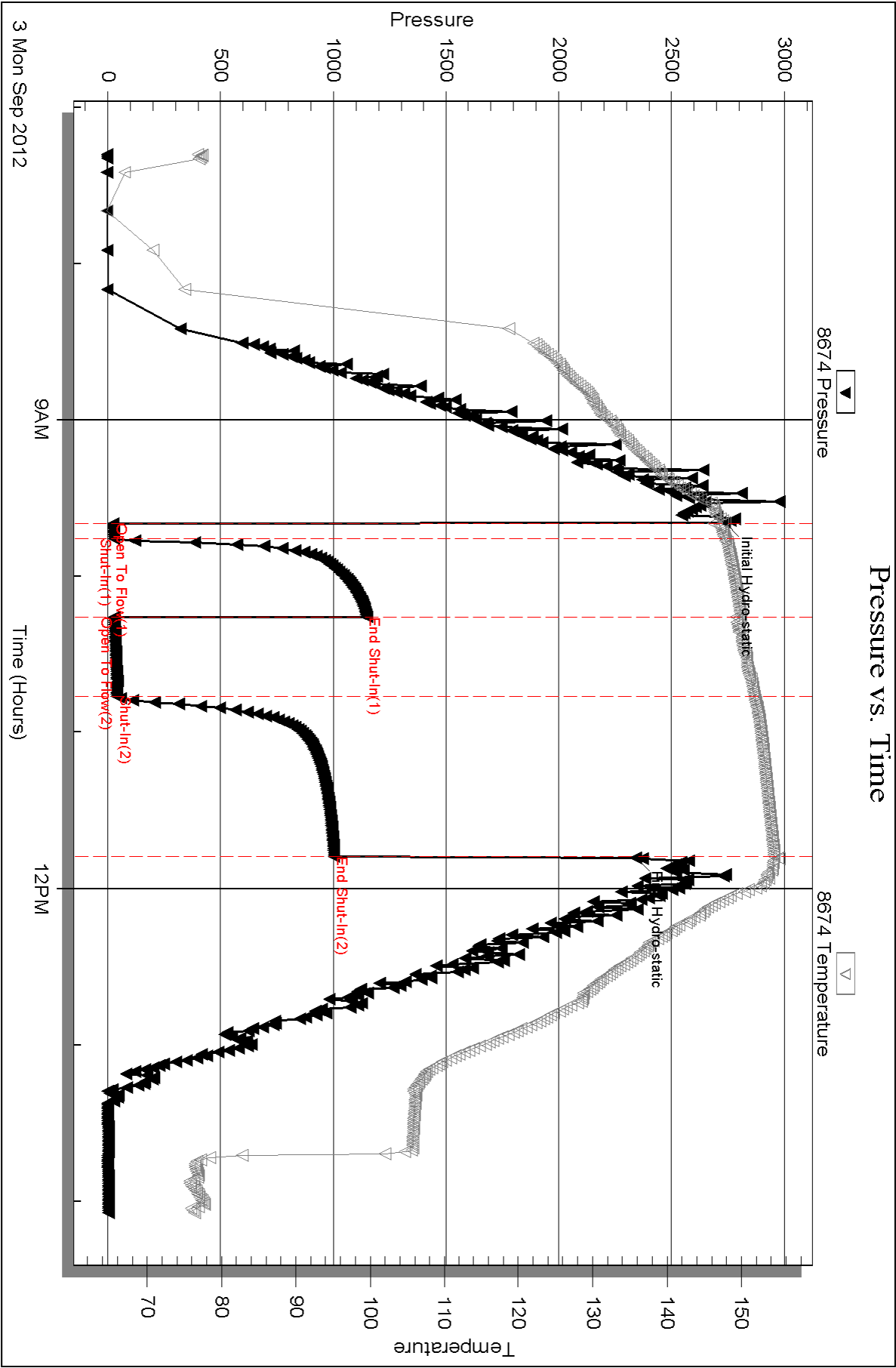
Serial #: 8674

Inside

Mull Drilling Company

Champlin Figgin's #3

DST Test Number: 2

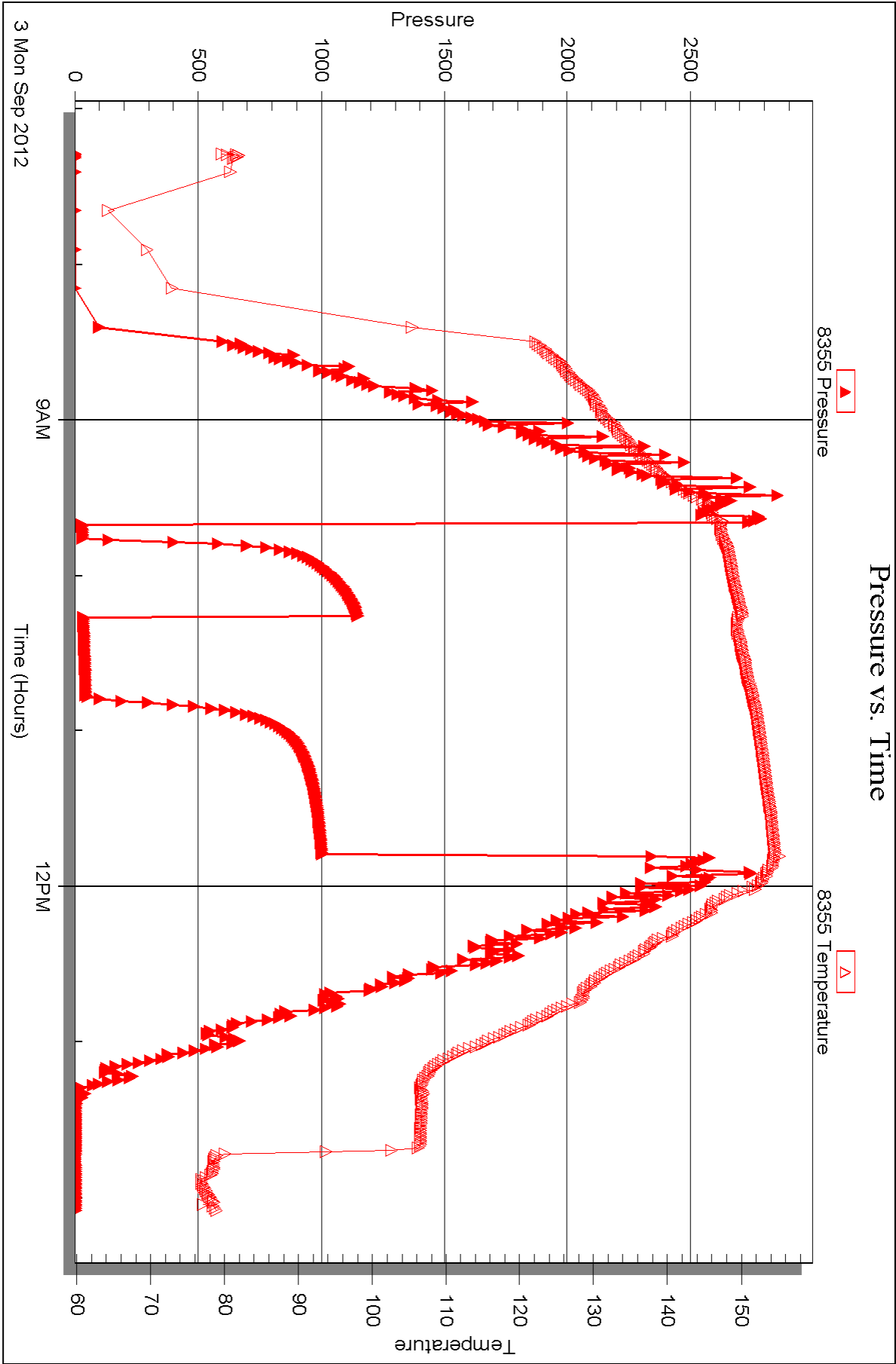


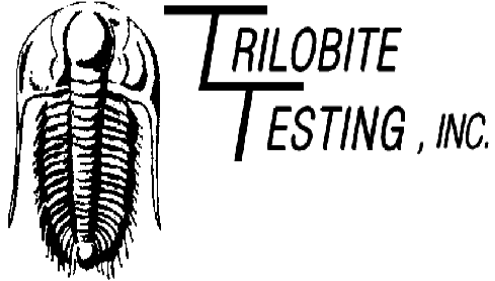
Serial #: 8355

Outside Mull Drilling Company

Champlin Figins #3

DST Test Number: 2





DRILL STEM TEST REPORT

Prepared For: **Mull Drilling Company**

1700N Waterfront Pkwy
B# 1200
Wichita, KS 67206

ATTN: Phil Askey

Champlin Figgins #3

27-13-34 Cheyenne, CO

Start Date: 2012.09.04 @ 00:22:00

End Date: 2012.09.04 @ 07:56:09

Job Ticket #: 48839 DST #: 3

Trilobite Testing, Inc

PO Box 362 Hays, KS 67601

ph: 785-625-4778 fax: 785-625-5620

Printed: 2012.09.11 @ 08:48:01

Mull Drilling Company

27-13-34 Cheyenne, CO

Champlin Figgins #3

DST # 3

Mississippi / Sperge

2012.09.04



TRILOBITE
TESTING, INC.

DRILL STEM TEST REPORT

Mull Drilling Company

1700N Waterfront Pkwy
B# 1200
Wichita, KS 67206
ATTN: Phil Askey

27-13-34 Cheyenne, CO

Champlin Figgins #3

Job Ticket: 48839

DST#: 3

Test Start: 2012.09.04 @ 00:22:00

GENERAL INFORMATION:

Formation: **Mississippi / Sperge**

Deviated: No Whipstock: 0.00 ft (KB)

Time Tool Opened: 02:54:10

Time Test Ended: 07:56:09

Test Type: Conventional Bottom Hole (Reset)

Tester: Will MacLean

Unit No: 40

Interval: 5422.00 ft (KB) To 5502.00 ft (KB) (TVD)

Total Depth: 5502.00 ft (KB) (TVD)

Hole Diameter: 7.88 inches Hole Condition: Good

Reference Elevations: 4291.00 ft (KB)

4280.00 ft (CF)

KB to GR/CF: 11.00 ft

Serial #: 8674 Inside

Press @ Run Depth: 43.49 psig @ 5423.00 ft (KB)

Start Date: 2012.09.04

End Date:

2012.09.04

Start Time: 00:22:00

End Time:

07:56:09

Capacity: 8000.00 psig

Last Calib.: 2012.09.04

Time On Btm: 2012.09.04 @ 02:53:55

Time Off Btm: 2012.09.04 @ 05:01:24

TEST COMMENT: IF- Weak Surface Blow

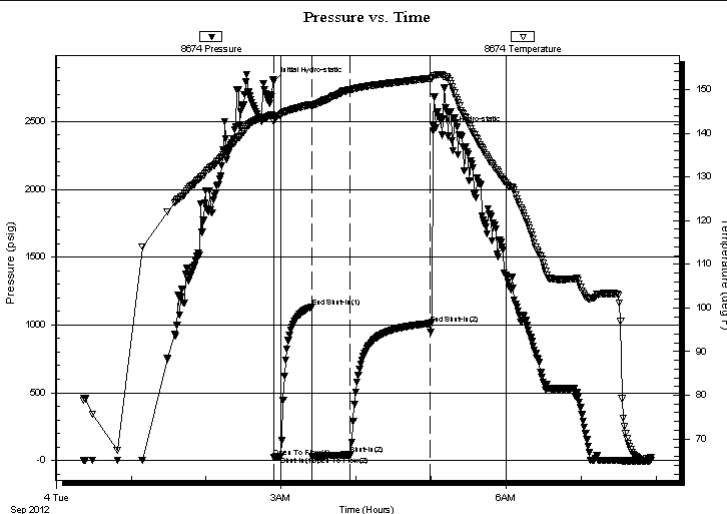
ISI- No Blow

FF- No Blow

FSI- No Blow

PRESSURE SUMMARY

Time (Min.)	Pressure (psig)	Temp (deg F)	Annotation
0	2796.22	144.00	Initial Hydro-static
1	25.31	142.71	Open To Flow (1)
6	30.43	144.22	Shut-In(1)
31	1133.86	146.60	End Shut-In(1)
31	33.09	146.07	Open To Flow (2)
62	43.49	149.86	Shut-In(2)
125	1010.87	152.54	End Shut-In(2)
128	2428.61	153.04	Final Hydro-static



Recovery

Length (ft)	Description	Volume (bbl)
5.00	100% mud	0.02

Gas Rates

	Choke (inches)	Pressure (psig)	Gas Rate (Mcf/d)
--	----------------	-----------------	------------------

* Recovery from multiple tests



**TRILOBITE
TESTING, INC.**

DRILL STEM TEST REPORT

Mull Drilling Company

1700N Waterfront Pkwy
B# 1200
Wichita, KS 67206
ATTN: Phil Askey

27-13-34 Cheyenne, CO

Champlin Figgins #3

Job Ticket: 48839

DST#: 3

Test Start: 2012.09.04 @ 00:22:00

GENERAL INFORMATION:

Formation: **Mississippi / Sperge**

Deviated: No Whipstock: 0.00 ft (KB)

Time Tool Opened: 02:54:10

Time Test Ended: 07:56:09

Test Type: Conventional Bottom Hole (Reset)

Tester: Will MacLean

Unit No: 40

Interval: 5422.00 ft (KB) To 5502.00 ft (KB) (TVD)

Total Depth: 5502.00 ft (KB) (TVD)

Hole Diameter: 7.88 inches Hole Condition: Good

Reference Elevations: 4291.00 ft (KB)

4280.00 ft (CF)

KB to GR/CF: 11.00 ft

Serial #: 8355 Outside

Press@RunDepth: psig @ 5423.00 ft (KB)

Start Date: 2012.09.04

End Date:

2012.09.04

Start Time: 00:21:15

End Time:

07:56:39

Capacity: 8000.00 psig

Last Calib.: 2012.09.04

Time On Btm:

Time Off Btm:

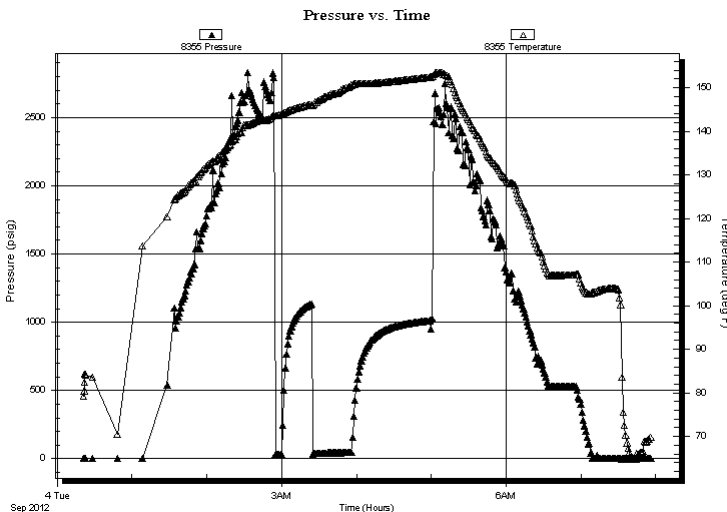
TEST COMMENT: IF- Weak Surface Blow

ISI- No Blow

FF- No Blow

FSI- No Blow

PRESSURE SUMMARY



Time
(Min.)

Pressure
(psig)

Temp
(deg F)

Annotation

Recovery

Length (ft)	Description	Volume (bbl)
5.00	100% mud	0.02

Gas Rates

	Choke (inches)	Pressure (psig)	Gas Rate (Mcf/d)
--	----------------	-----------------	------------------

* Recovery from multiple tests



TRILOBITE
TESTING, INC.

DRILL STEM TEST REPORT

TOOL DIAGRAM

Mull Drilling Company

27-13-34 Cheyenne, CO

1700N Waterfront Pkwy

Champlin Figgins #3

B# 1200

Job Ticket: 48839

DST#: 3

Wichita, KS 67206

Test Start: 2012.09.04 @ 00:22:00

ATTN: Phil Askey

Tool Information

Drill Pipe:	Length:	5240.00 ft	Diameter:	3.80 inches	Volume:	73.50 bbl	Tool Weight:	2000.00 lb
Heavy Wt. Pipe:	Length:	0.00 ft	Diameter:	0.00 inches	Volume:	0.00 bbl	Weight set on Packer:	24000.00 lb
Drill Collar:	Length:	178.00 ft	Diameter:	2.25 inches	Volume:	0.88 bbl	Weight to Pull Loose:	14000.00 lb
					Total Volume:	74.38 bbl	Tool Chased	ft
Drill Pipe Above KB:		24.00 ft					String Weight: Initial	76000.00 lb
Depth to Top Packer:		5422.00 ft					Final	76000.00 lb
Depth to Bottom Packer:		ft						
Interval between Packers:		80.00 ft						
Tool Length:		108.00 ft						
Number of Packers:		2	Diameter:	6.75 inches				
Tool Comments:								

Tool Description

Length (ft) Serial No. Position Depth (ft) Accum. Lengths

Change Over Sub	1.00			5395.00		
Shut In Tool	5.00			5400.00		
Hydraulic tool	5.00			5405.00		
Jars	5.00			5410.00		
Safety Joint	3.00			5413.00		
Packer	5.00			5418.00	28.00	Bottom Of Top Packer
Packer	4.00			5422.00		
Stubb	1.00			5423.00		
Recorder	0.00	8674	Inside	5423.00		
Recorder	0.00	8355	Outside	5423.00		
Perforations	12.00			5435.00		
Change Over Sub	1.00			5436.00		
Drill Pipe	62.00			5498.00		
Change Over Sub	1.00			5499.00		
Bullnose	3.00			5502.00	80.00	Bottom Packers & Anchor

Total Tool Length: 108.00



TRILOBITE
TESTING, INC.

DRILL STEM TEST REPORT

FLUID SUMMARY

Mull Drilling Company

27-13-34 Cheyenne, CO

1700N Waterfront Pkwy

Champlin Figgins #3

B# 1200

Job Ticket: 48839

DST#: 3

Wichita, KS 67206

Test Start: 2012.09.04 @ 00:22:00

ATTN: Phil Askey

Mud and Cushion Information

Mud Type: Gel Chem

Cushion Type:

Oil API:

deg API

Mud Weight: 9.00 lb/gal

Cushion Length:

ft

Water Salinity:

ppm

Viscosity: 60.00 sec/qt

Cushion Volume:

bbl

Water Loss: 7.98 in³

Gas Cushion Type:

Resistivity: ohm.m

Gas Cushion Pressure:

psig

Salinity: 1500.00 ppm

Filter Cake: 1.00 inches

Recovery Information

Recovery Table

Length ft	Description	Volume bbl
5.00	100% mud	0.025

Total Length: 5.00 ft

Total Volume: 0.025 bbl

Num Fluid Samples: 0

Num Gas Bombs: 0

Serial #:

Laboratory Name:

Laboratory Location:

Recovery Comments:

Serial #: 8674

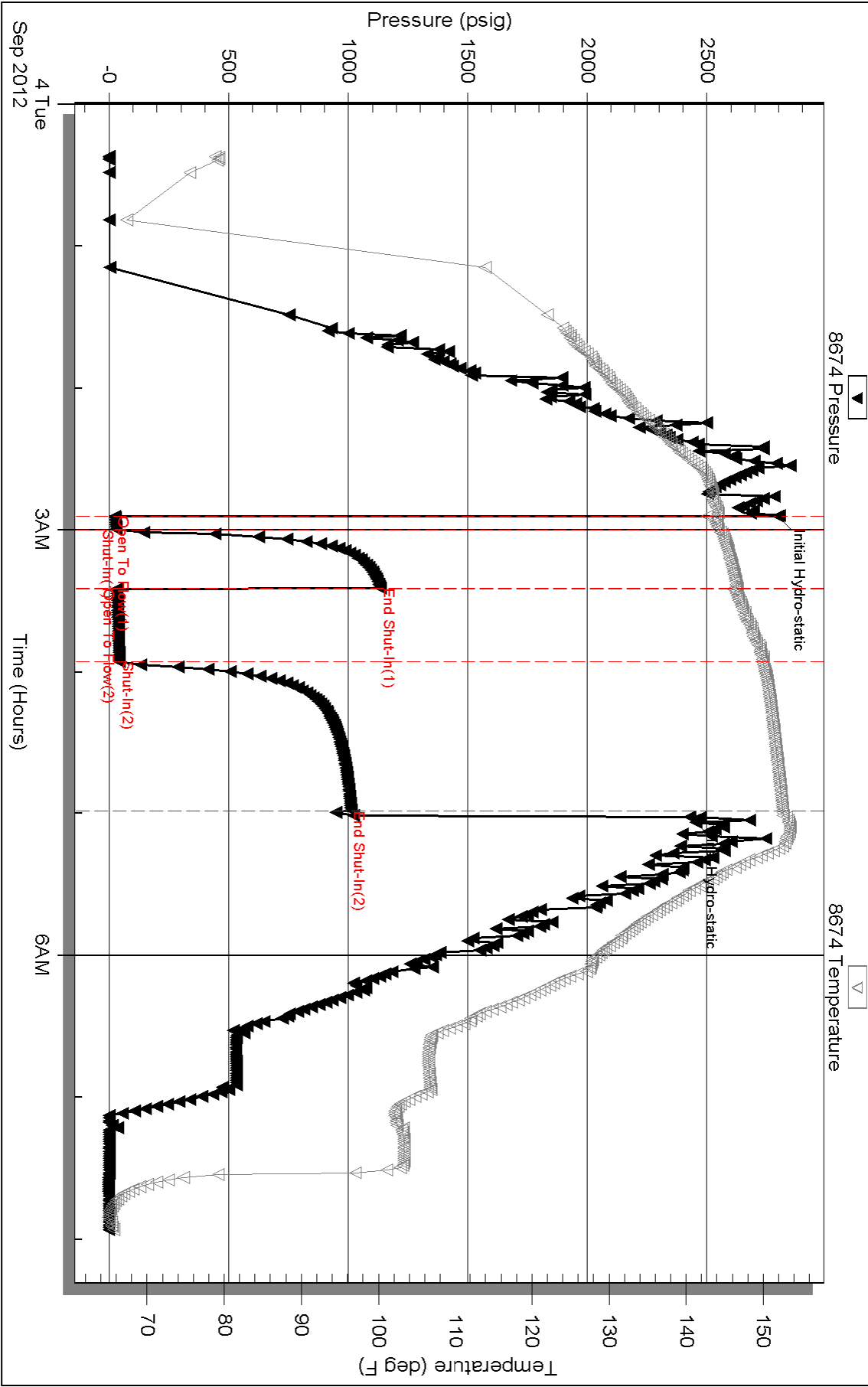
Inside

Mull Drilling Company

Champlin Figins #3

DST Test Number: 3

Pressure vs. Time



Triobite Testing, Inc

Ref. No: 48839

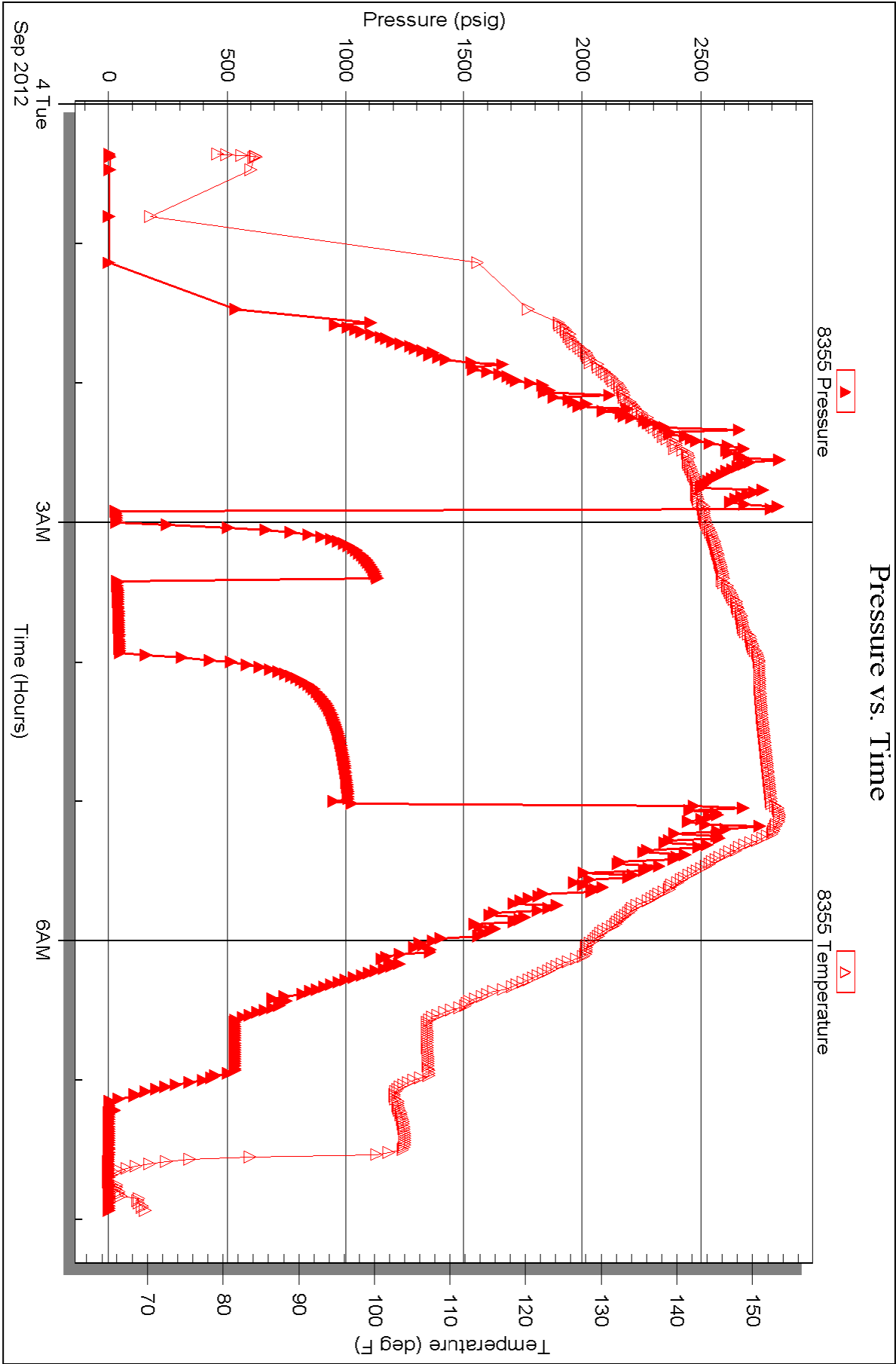
Printed: 2012.09.11 @ 08:48:05

Serial #: 8355

Outside Mull Drilling Company

Champlin Figins #3

DST Test Number: 3





TRILOBITE TESTING INC.

P.O. Box 1733 • Hays, Kansas 67601

Test Ticket

NO. 48293

Well Name & No. Champion Figgins #3 Test No. #1 Date 8/29/12
Company Mull Drilling Comp Inc. Elevation 4291 KB 4280 GL
Address 1700 N Waterfront Pkwy B#1200 Wichita, KS 67206
Co. Rep / Geo. Phil Askey Rig Muller #20
Location: Sec. 27 Twp. 13.5 Rge. 44W Co. Cheyenne State Colo

Interval Tested 4204 4222 Zone Tested Shawnee
Anchor Length 18 Drill Pipe Run 4012' Mud Wt. 8.8
Top Packer Depth 4199 Drill Collars Run 178' Vis 60
Bottom Packer Depth 4204 Wt. Pipe Run — WL 7.2
Total Depth 4222 Chlorides 1800 ppm System LCM #6

Blow Description 6" in blow
No return
B.O.B. in 16 min
5" in Return blow

Rec	Feet of	%gas	%oil	%water	%mud
<u>5'</u>	<u>cgo</u>	<u>15</u>	<u>85</u>		
<u>325'</u>	<u>90 3/4 mcw</u>	<u>20</u>	<u>5</u>	<u>65</u>	<u>10</u>
Rec	Feet of	%gas	%oil	%water	%mud
Rec	Feet of <u>(750' GAS IN PIPE)</u>	%gas	%oil	%water	%mud
Rec	Feet of	%gas	%oil	%water	%mud

Rec Total 330' BHT 143° Gravity — API RW 270 @ 60 ° F Chlorides 25,500 ppm

(A) Initial Hydrostatic 2083
(B) First Initial Flow 30
(C) First Final Flow 51
(D) Initial Shut-In 940
(E) Second Initial Flow 59
(F) Second Final Flow 172
(G) Final Shut-In 940
(H) Final Hydrostatic 1974

☒ Test 1250
☐ Jars
☐ Safety Joint
☒ Circ Sub N/C
☐ Hourly Standby
☒ Mileage 220 RT 341
☐ Sampler
☐ Straddle
☐ Shale Packer
☐ Extra Packer
☐ Extra Recorder
☐ Day Standby
☐ Accessibility
Sub Total 1591

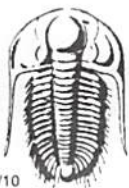
T-On Location 21:10
T-Started 21:50
T-Open 00:15
T-Pulled 03:50
T-Out
Comments
☐ Ruined Shale Packer
☐ Ruined Packer
☐ Extra Copies
Sub Total 0
Total 1591
MP/DST Disc't

Initial Open 5
Initial Shut-In 30
Final Flow 60
Final Shut-In 120

Approved By

Our Representative

TriLOBITE TESTING INC. shall not be liable for damaged of any kind of the property or personnel of the one for whom a test is made, or for any loss suffered or sustained, directly or indirectly, through the use of its equipment, or its statements or opinion concerning the results of any test, tools lost or damaged in the hole shall be paid for at cost by the party for whom the test is made.



TRILOBITE TESTING INC.

P.O. Box 1733 • Hays, Kansas 67601

Test Ticket

NO. 48838

Well Name & No. Champlin - Friggins #3 Test No. DST #2 Date 7-3-12
 Company Mull Drilling Co. Inc Elevation 4291 KB 4280 GL
 Address 1700 N. Waterfront PKWY B#1200 Wichita KS 67206
 Co. Rep / Geo. Phil Askey Rig Martin Rig #20
 Location: Sec. 27 Twp. 13s Rge. 44w Co. Cheyenne State CO

Interval Tested 5410-5472 Zone Tested Mississippi / Spargen
 Anchor Length 62 Drill Pipe Run 5211 Mud Wt. 9.3
 Top Packer Depth 5406 Drill Collars Run 178 Vis 60
 Bottom Packer Depth 5410 Wt. Pipe Run 0 WL 8.0
 Total Depth 5472 Chlorides 1500 ppm System LCM 1016

Blow Description IF - Wear Surface Blow 14"
ISI - No Blow
EF - Very Wear Surface Blow Died in 8 1/2 min
FSI - No Blow

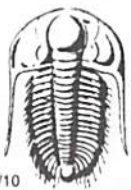
Rec	Feet of	%gas	%oil	%water	%mud
<u>10</u>	<u>Mud</u>			<u>100</u>	
Rec	Feet of	%gas	%oil	%water	%mud
Rec	Feet of	%gas	%oil	%water	%mud
Rec	Feet of	%gas	%oil	%water	%mud
Rec	Feet of	%gas	%oil	%water	%mud

Rec Total 10 BHT 136 Gravity _____ API RW _____ @ _____ °F Chlorides _____ ppm

(A) Initial Hydrostatic <u>2738</u>	<input checked="" type="checkbox"/> Test 1350	T-On Location <u>5:08</u>
(B) First Initial Flow <u>25</u>	<input checked="" type="checkbox"/> Jars 250	T-Started <u>7:18</u>
(C) First Final Flow <u>28</u>	<input checked="" type="checkbox"/> Safety Joint 75	T-Open <u>9:39</u>
(D) Initial Shut-In <u>1146</u>	<input checked="" type="checkbox"/> Circ Sub	T-Pulled <u>11:48</u>
(E) Second Initial Flow <u>30</u>	<input type="checkbox"/> Hourly Standby	T-Out <u>14:04</u>
(F) Second Final Flow <u>40</u>	<input checked="" type="checkbox"/> Mileage <u>220 R/T</u> 341	Comments _____
(G) Final Shut-In <u>1002</u>	<input type="checkbox"/> Sampler	
(H) Final Hydrostatic <u>2341</u>	<input type="checkbox"/> Straddle	<input type="checkbox"/> Ruined Shale Packer

Initial Open <u>5</u>	<input type="checkbox"/> Shale Packer	<input type="checkbox"/> Ruined Packer
Initial Shut-In <u>30</u>	<input type="checkbox"/> Extra Packer	<input type="checkbox"/> Extra Copies
Final Flow <u>30</u>	<input type="checkbox"/> Extra Recorder	Sub Total <u>0</u>
Final Shut-In <u>60</u>	<input type="checkbox"/> Day Standby	Total <u>2016</u>
	<input type="checkbox"/> Accessibility	MP/DST Disc't _____
	Sub Total <u>2016</u>	

Approved By Phil Askey Our Representative 2nd TM
 Trilobite Testing Inc. shall not be liable for damaged of any kind of the property or personnel of the one for whom a test is made, or for any loss suffered or sustained, directly or indirectly, through the use of its equipment, or its statements or opinion concerning the results of any test. Tools lost or damaged in the hole shall be paid for at cost by the party for whom the test is made.



TRILOBITE TESTING INC.

P.O. Box 1733 • Hays, Kansas 67601

Test Ticket

NO. 48839

Well Name & No. Champlin - Figgins #3 Test No. DST #3 Date 9-3-12
Company Mull Drilling Company Inc Elevation 4291 KB 4280 GL
Address 1700 N Waterfront PKWY B#1200 Wichita KS 67206
Co. Rep / Geo. Phil Askey Rig Murfin Rig #20
Location: Sec. 27 Twp. 13s Rge. 44w Co. Cherokee State CO

Interval Tested 5422-5502 Zone Tested Mississippi / Spargen
Anchor Length 80 Drill Pipe Run 5240 Mud Wt. 9.3
Top Packer Depth 5418 Drill Collars Run 178 Vis 60
Bottom Packer Depth 5422 Wt. Pipe Run 0 WL 8.0
Total Depth 5502 Chlorides 1500 ppm System LCM 1016

Blow Description IF - Weak Surface Blow
IST - No Blow
FF - No Blow
FST - No Blow

Rec	Feet of	%gas	%oil	%water	%mud
<u>5</u>	<u>Mud</u>			<u>100</u>	

Rec Total 5 BHT 140 Gravity _____ API RW _____ @ _____ °F Chlorides _____ ppm

(A) Initial Hydrostatic	(B) First Initial Flow	(C) First Final Flow	(D) Initial Shut-In	(E) Second Initial Flow	(F) Second Final Flow	(G) Final Shut-In	(H) Final Hydrostatic
<u>2796</u>	<u>25</u>	<u>30</u>	<u>1133</u>	<u>33</u>	<u>43</u>	<u>1010</u>	<u>2428</u>

Test	Jars	Safety Joint	Circ Sub	Hourly Standby	Mileage	Sampler	Straddle	Shale Packer	Extra Packer	Extra Recorder	Day Standby	Accessibility
<input checked="" type="checkbox"/> <u>1350</u>	<input checked="" type="checkbox"/> <u>250</u>	<input checked="" type="checkbox"/> <u>75</u>	<input checked="" type="checkbox"/> <u>N/C</u>	<input type="checkbox"/>	<input checked="" type="checkbox"/> <u>220 R/T</u> 341	<input type="checkbox"/>	<input type="checkbox"/>	<input type="checkbox"/>	<input type="checkbox"/>	<input type="checkbox"/>	<input type="checkbox"/>	<input type="checkbox"/>

T-On Location 23:06
T-Started 00:22
T-Open 2:54
T-Pulled 5:01
T-Out 7:56
Comments _____

Initial Open 5
Initial Shut-In 30
Final Flow 30
Final Shut-In 60

Sub Total 2016

Approved By Phil Askey Our Representative Jim
Trilobite Testing Inc. shall not be liable for damaged of any kind of the property or personnel of the one for whom a test is made, or for any loss suffered or sustained, directly or indirectly, through the use of its equipment, or its statements or opinion concerning the results of any test, tools lost or damaged in the hole shall be paid for at cost by the party for whom the test is made.