



SUPERIOR
Hays,
Kansas

SONIC LOG

Company	MULL DRILLING COMPANY, INC.	Company	MULL DRILLING COMPANY, INC.
Well	CHAMPLIN - FIGGINS #3	Well	CHAMPLIN - FIGGINS #3
Field	SMOKEY CREEK	Field	SMOKEY CREEK
County	CHEYENNE	County	CHEYENNE
State	COLORADO	State	COLORADO
Location:	AP1 # : 05-017-07721-0000 1980' FSL & 660' FWL	Other Services CDL/CNL/PE DIL/MEL	
Permanent Datum	GROUND LEVEL	Elevation	4280
Log Measured From	KELLY BUSHING 11' A.G.L.	K.B. 4291 D.F. 4289 G.L. 4280	
Drilling Measured From	KELLY BUSHING		
SEC 27 TWP 13S RGE 44W			
Date	9/5/12		
Run Number	TWO		
Depth Driller	5610		
Depth Logger	5612		
Bottom Logged Interval	5600		
Top Log Interval	1700		
Casing Driller	8 5/8"@1715'	13 3/8"@389'	
Casing Logger	1714		
Bit Size	7 7/8"		
Type Fluid in Hole	CHEMICAL MUD	CHLORIDES 2,100 PPM	
Density / Viscosity	9.3/56		
pH / Fluid Loss	9.5/8.8		
Source of Sample	FLOWLINE		
Rm @ Meas. Temp	.800@80F		
Rmt @ Meas. Temp	.600@80F		
Rmc @ Meas. Temp	.960@80F		
Source of Rmt / Rmc	MEASUREMENT		
Rm @ BHT	.489@131F		
Time Circulation Stopped	6.5 HOURS		
Time Logger on Bottom	3:45 A.M.		
Maximum Recorded Temperature	131F		
Equipment Number	4010		
Location	HAYS, KANSAS		
Recorded By	JEFF LUEBBERS		
Witnessed By	PHIL ASKEY		

<<< Fold Here >>>

All interpretations are opinions based on inferences from electrical or other measurements and we cannot and do not guarantee the accuracy or correctness of any interpretation, and we shall not, except in the case of gross or willful negligence on our part, be liable or responsible for any loss, costs, damages, or expenses incurred or sustained by anyone resulting from any interpretation made by any of our officers, agents or employees. These interpretations are also subject to our general terms and conditions set out in our current Price Schedule.

Comments

THANK YOU FOR USING SUPERIOR WELL SERVICE HAYS, KANSAS (785) 628-6395
DIRECTIONS
CHEYENNE WELLS, CO., 4N. ON HWY 385 TO "RD. V", 1E., 1/2N., E. INTO

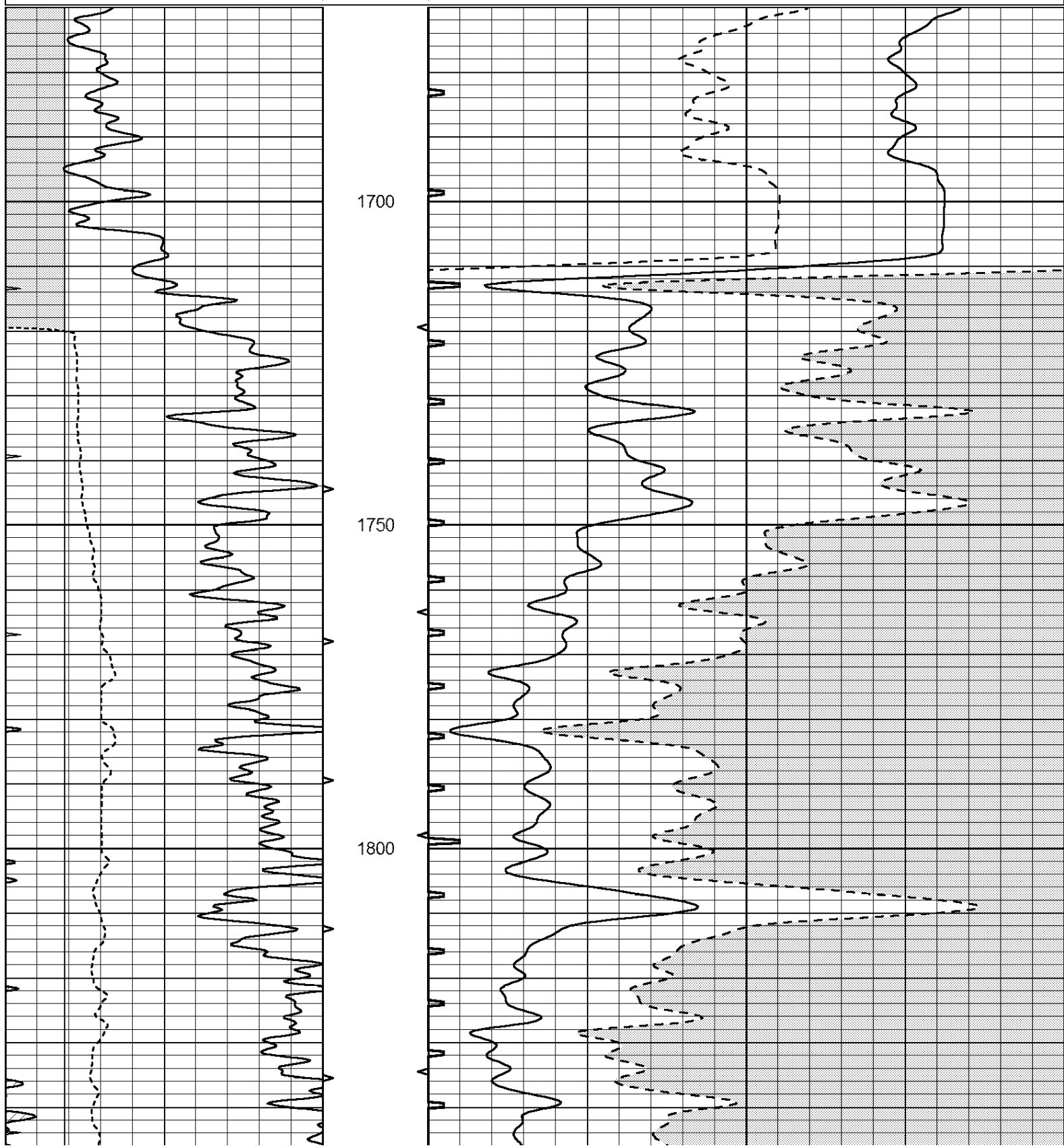


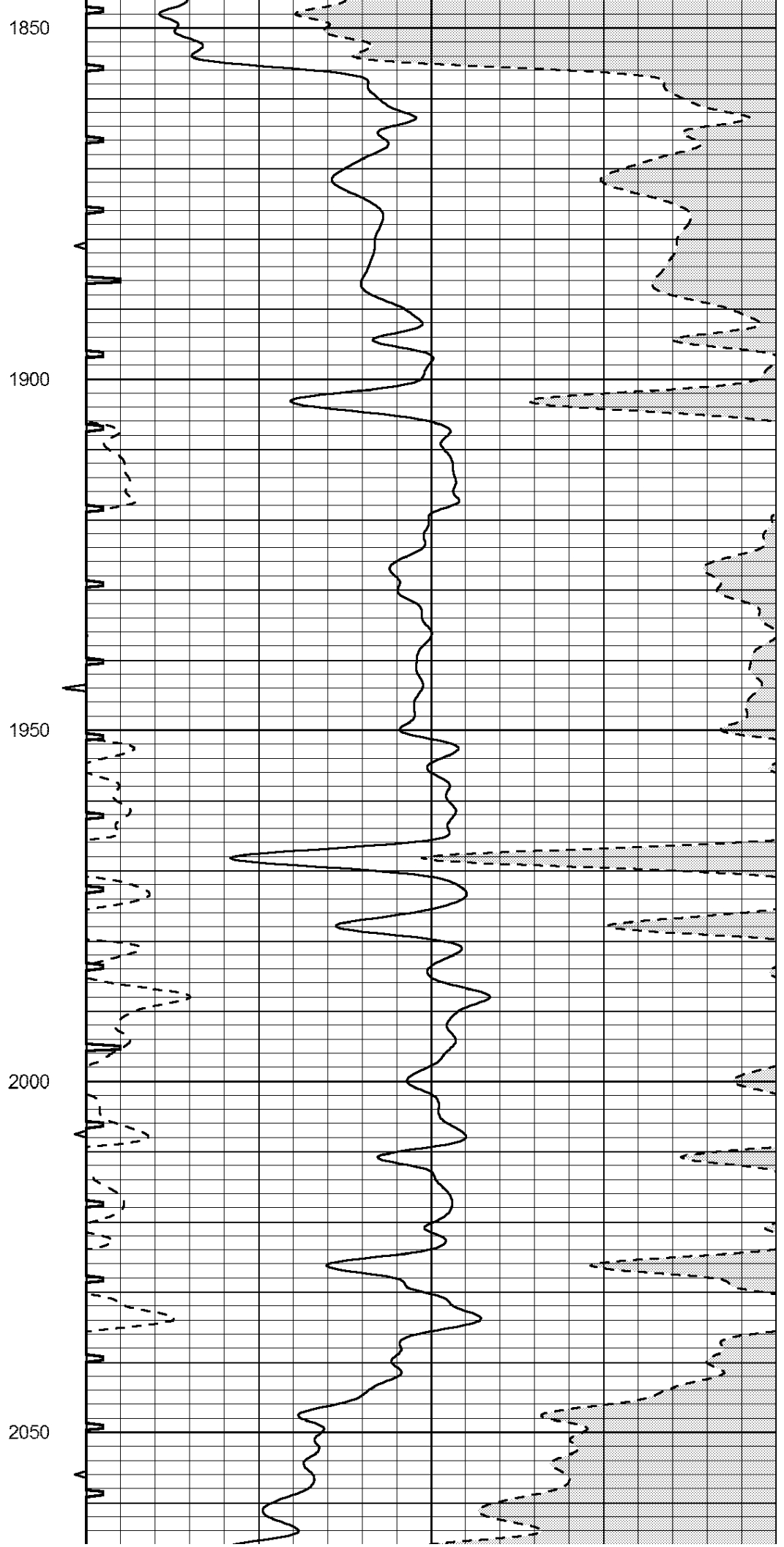
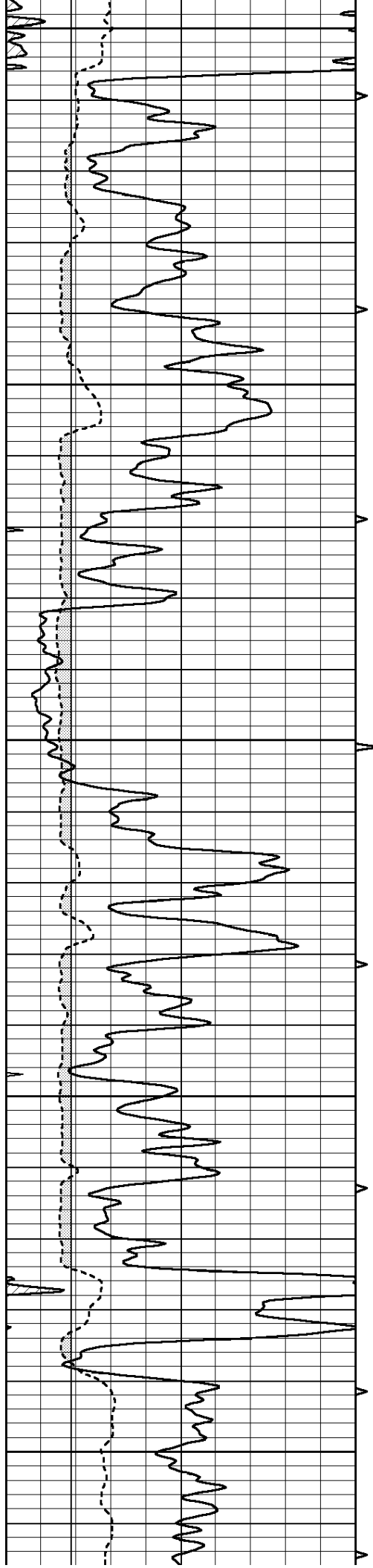
SUPERIOR
Hays,
Kansas

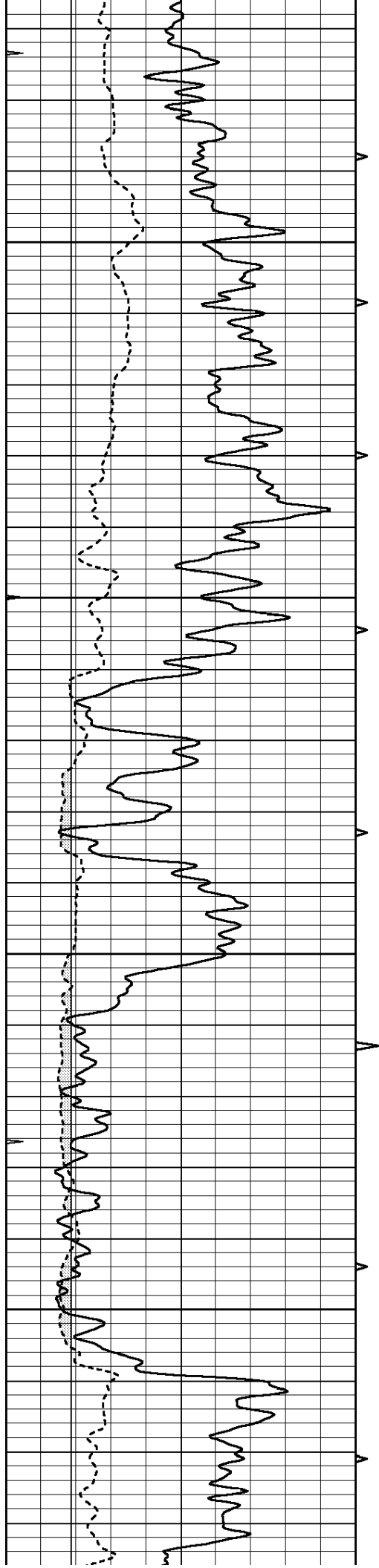
MAIN SECTION

Database File: 409518pe.db
Dataset Pathname: pass6.2
Presentation Format: slt
Dataset Creation: Wed Sep 05 08:05:25 2012
Charted by: Depth in Feet scaled 1:240

0	GAMMA RAY (GAPI)	150	ABHV	140	DELTA TIME (usec/ft)	40
6	CALIPER (in)	16	10 (ft3) 0	30	SONIC POROSITY (pu)	-10
0	MINMK	20	TBHV	0	ITT (msec)	20
			0 (ft3) 10			





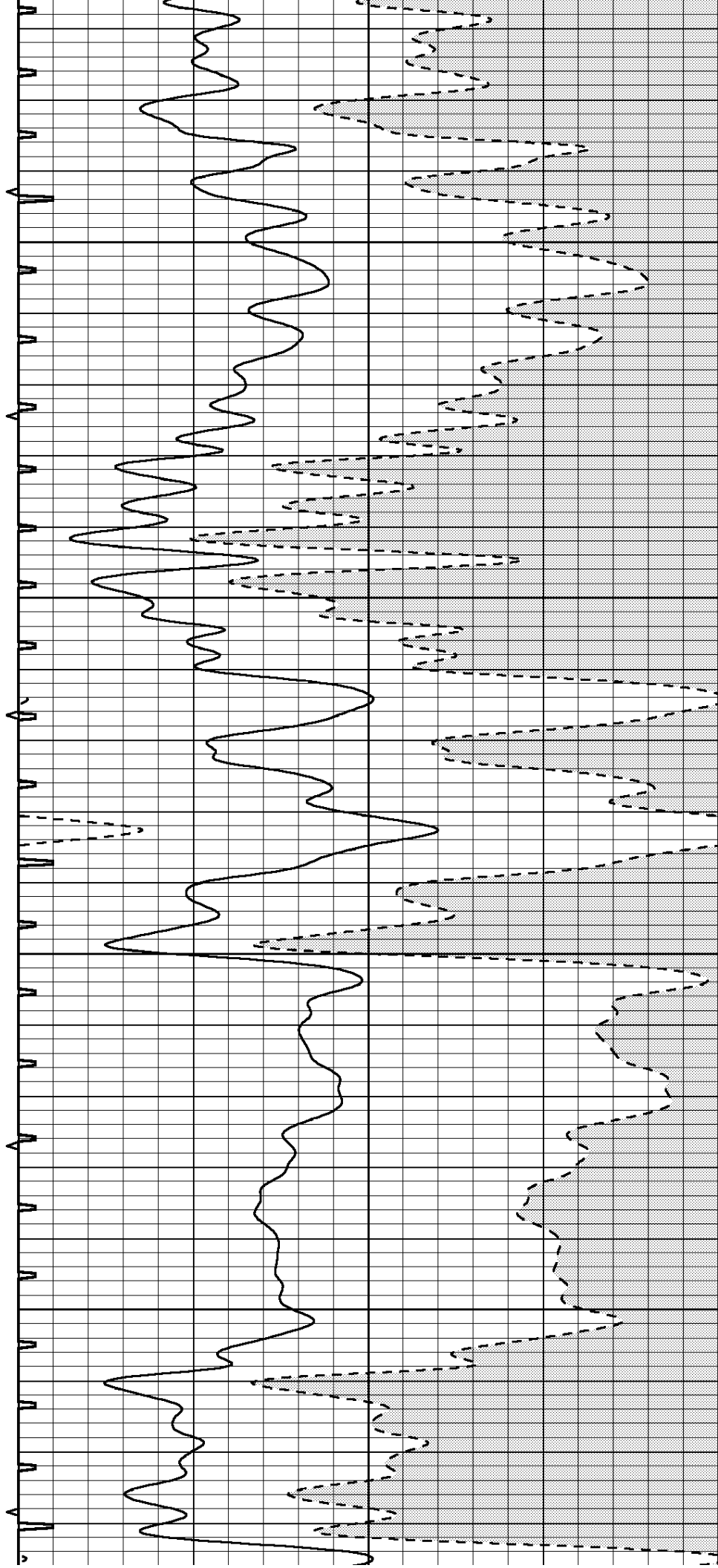


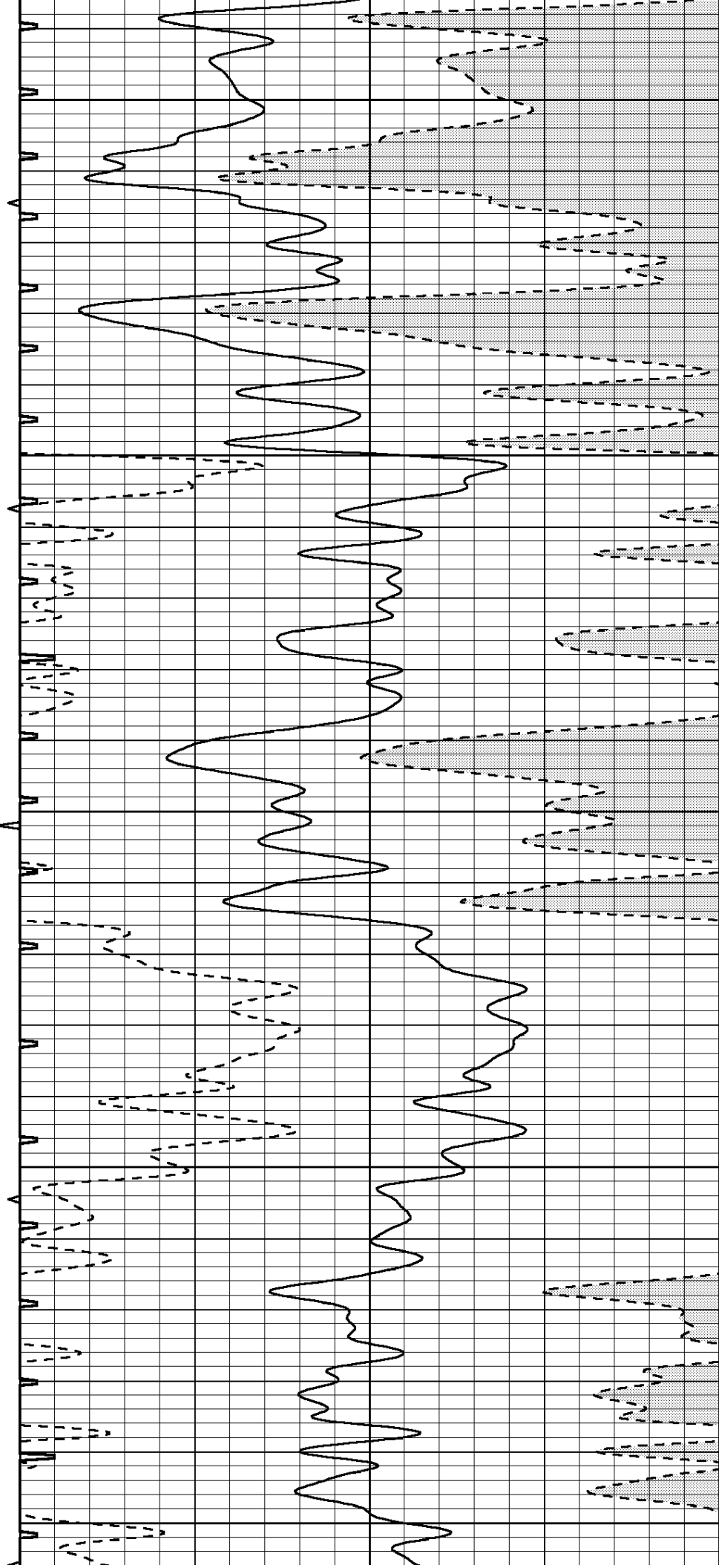
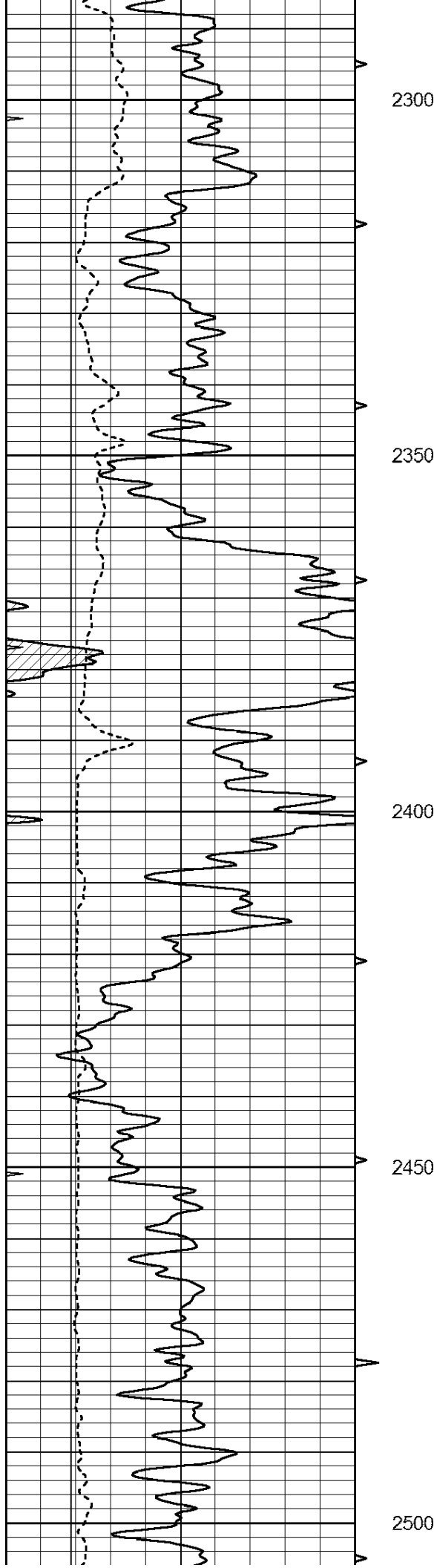
2100

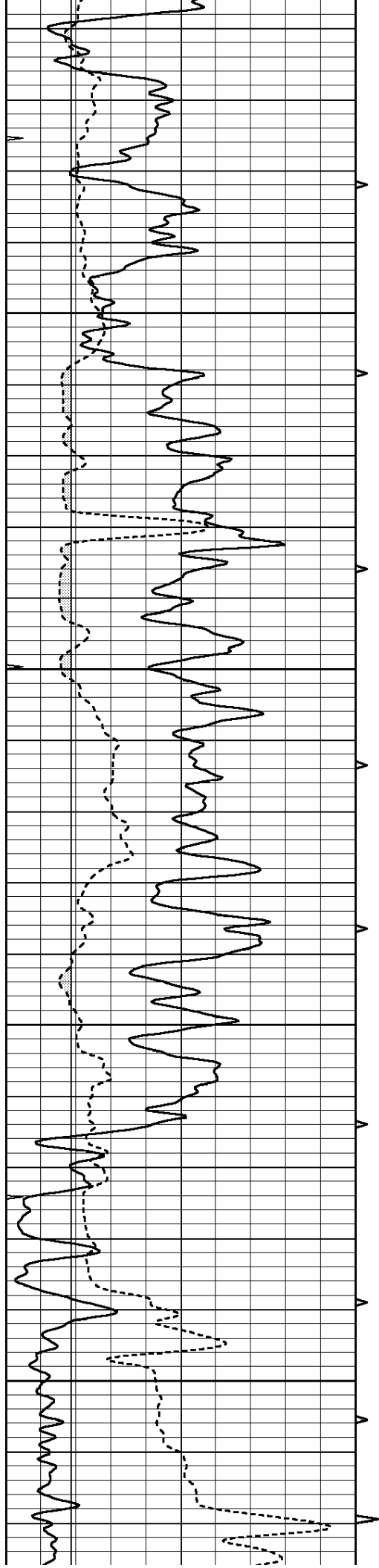
2150

2200

2250





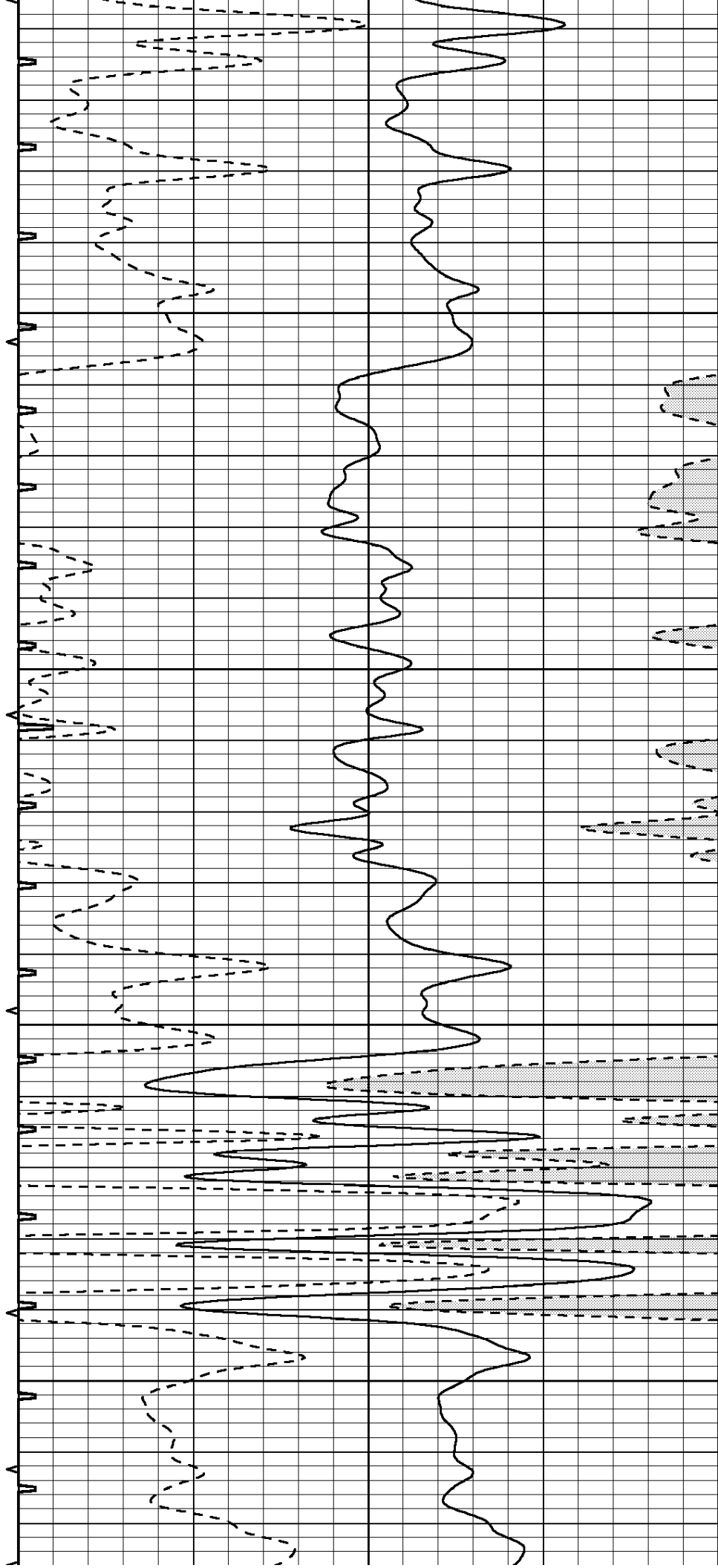


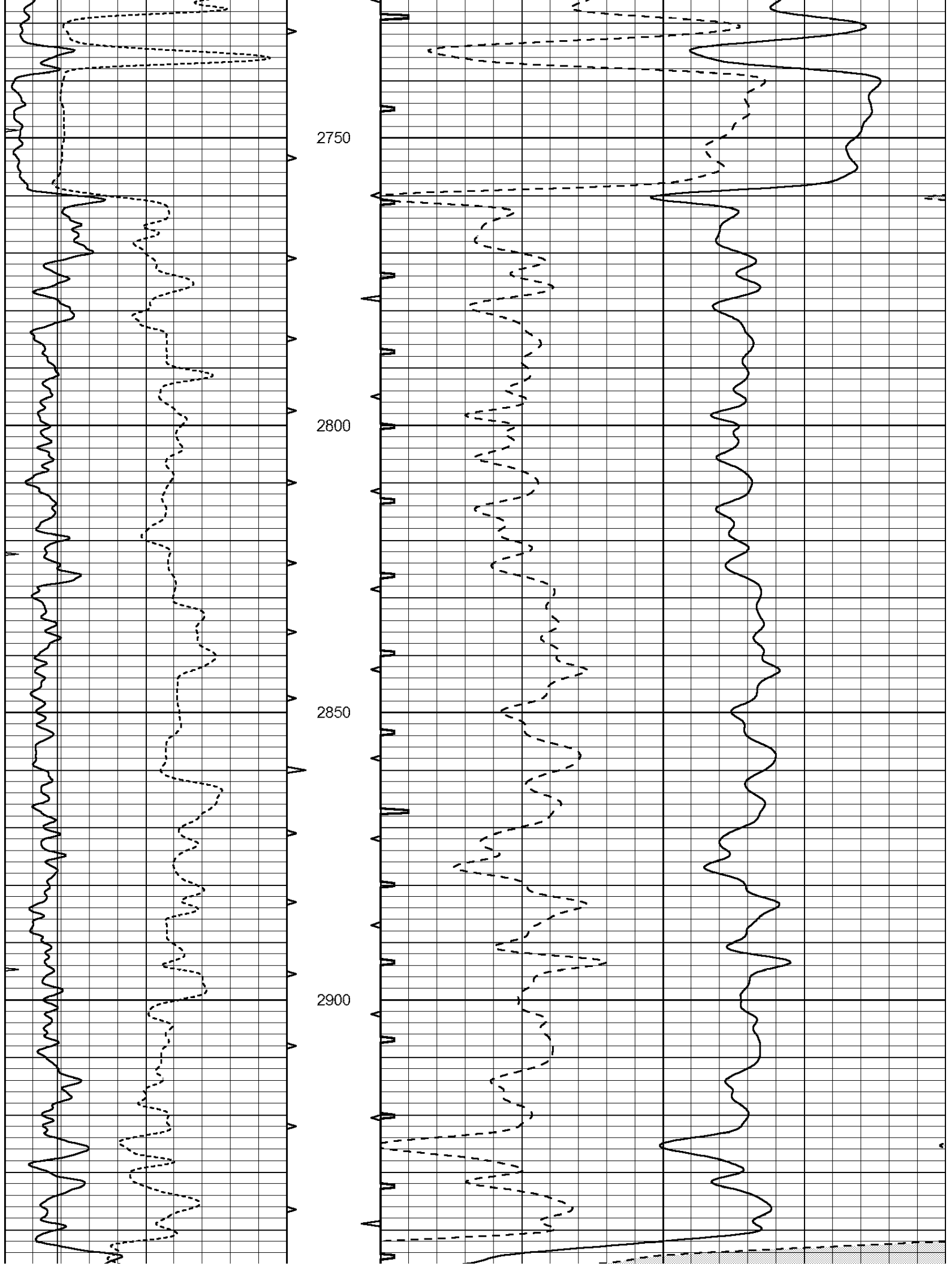
2550

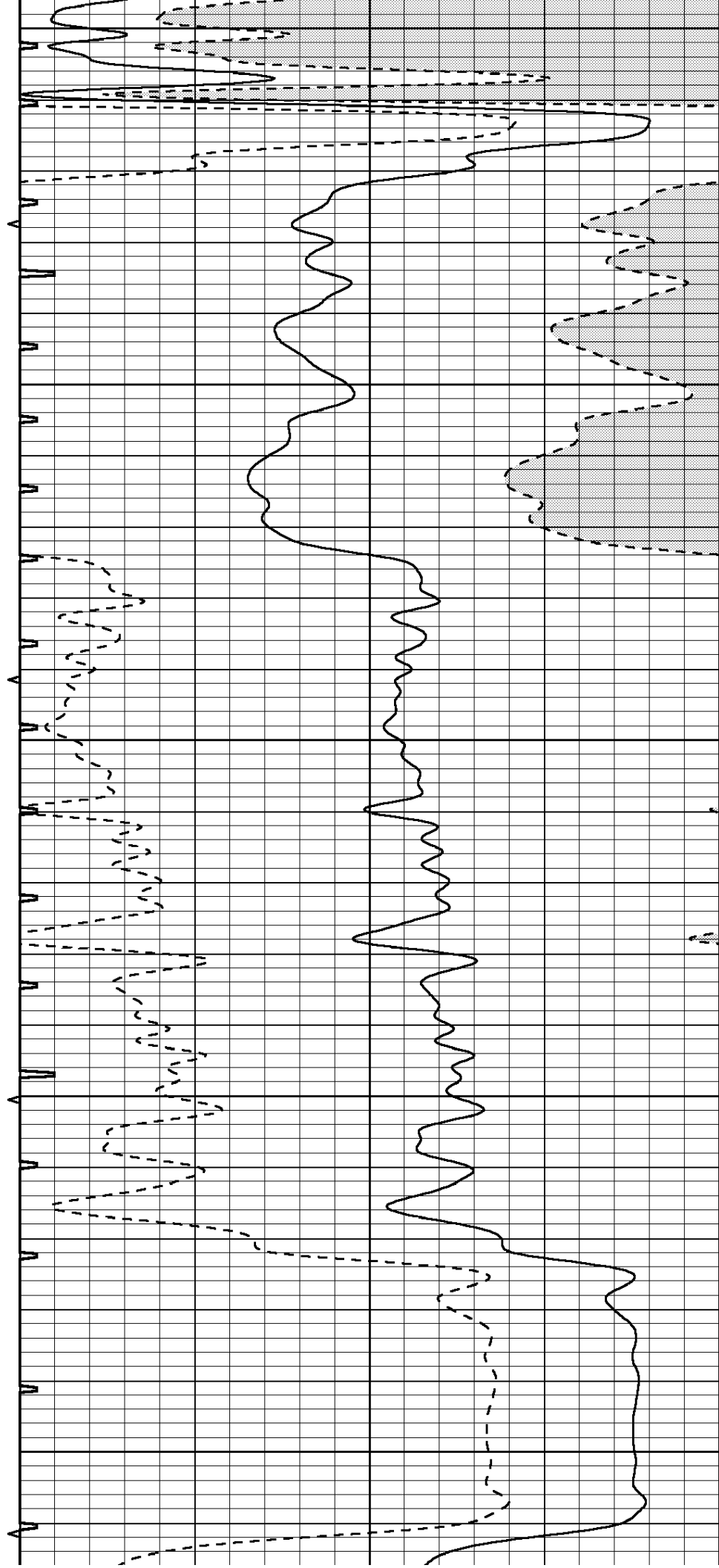
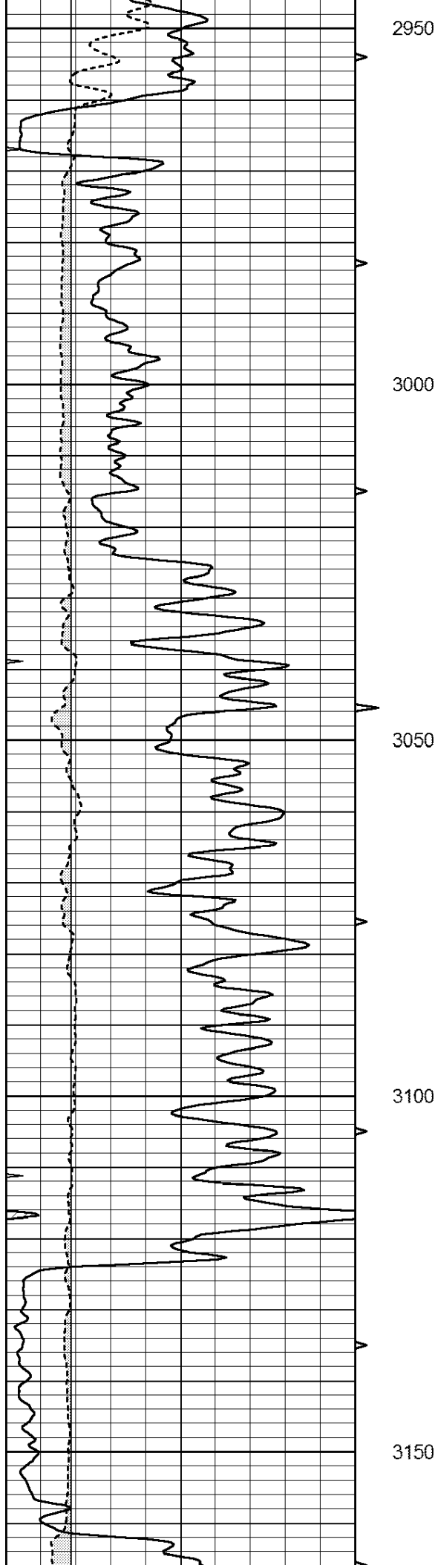
2600

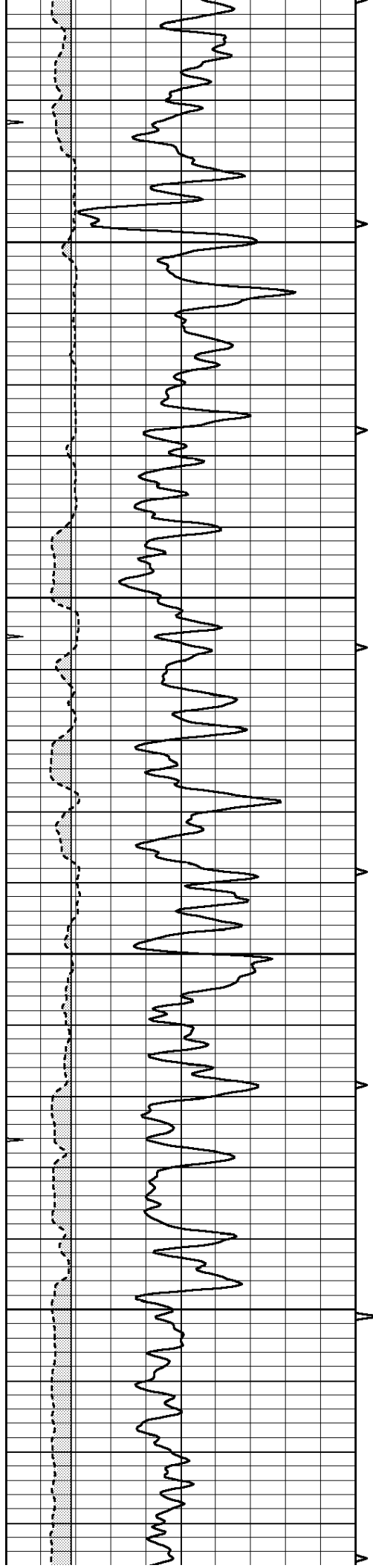
2650

2700







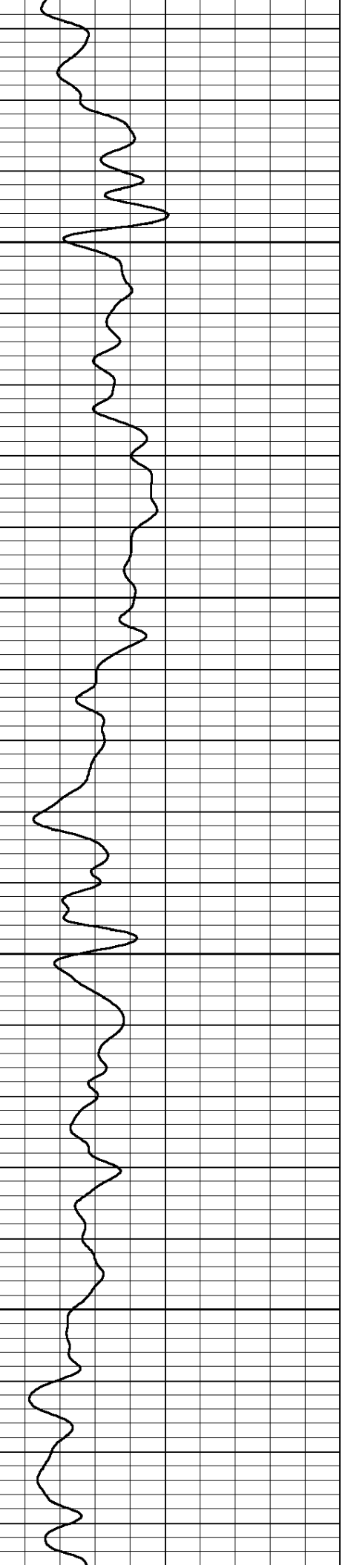
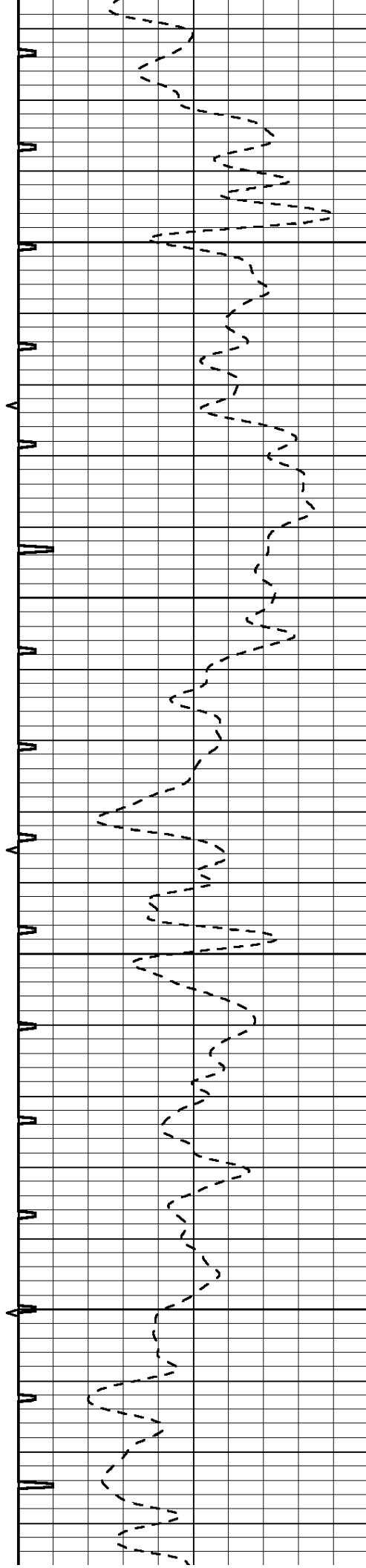


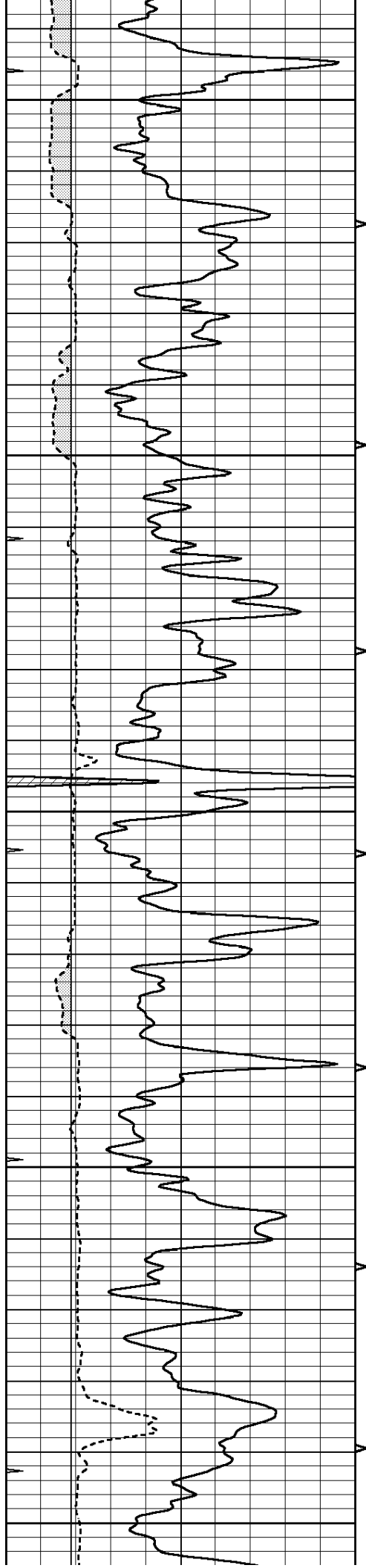
3200

3250

3300

3350





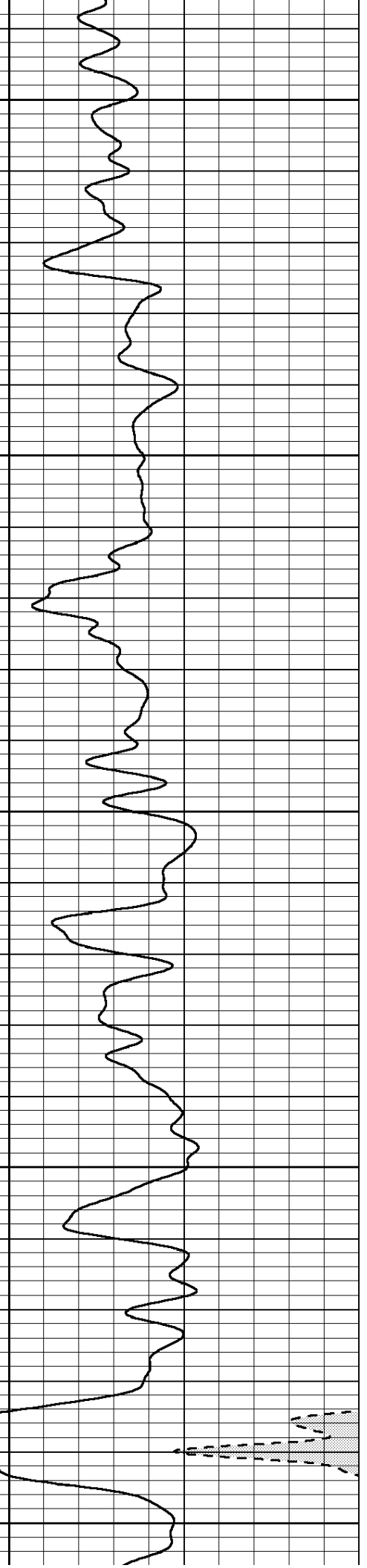
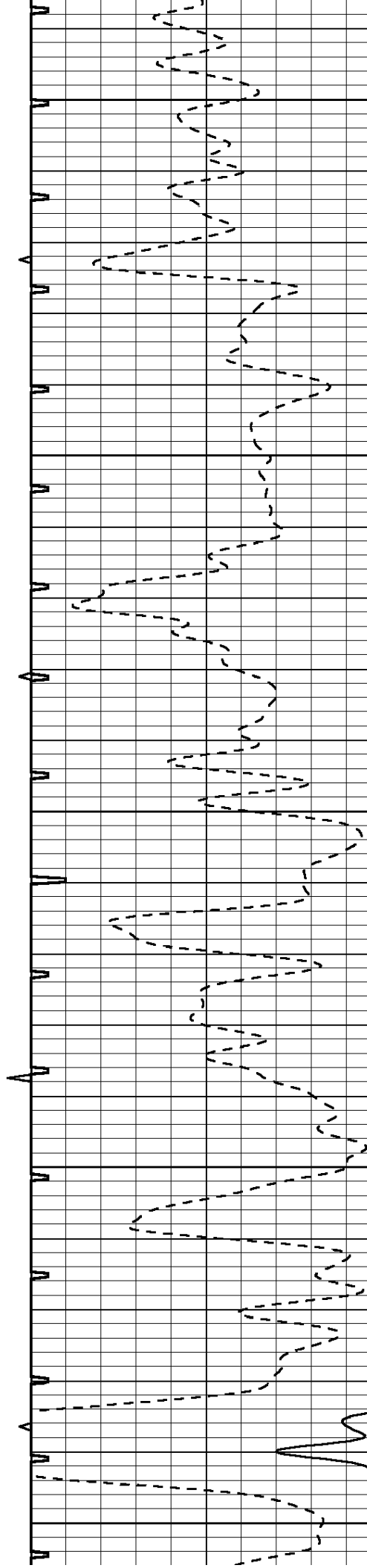
3400

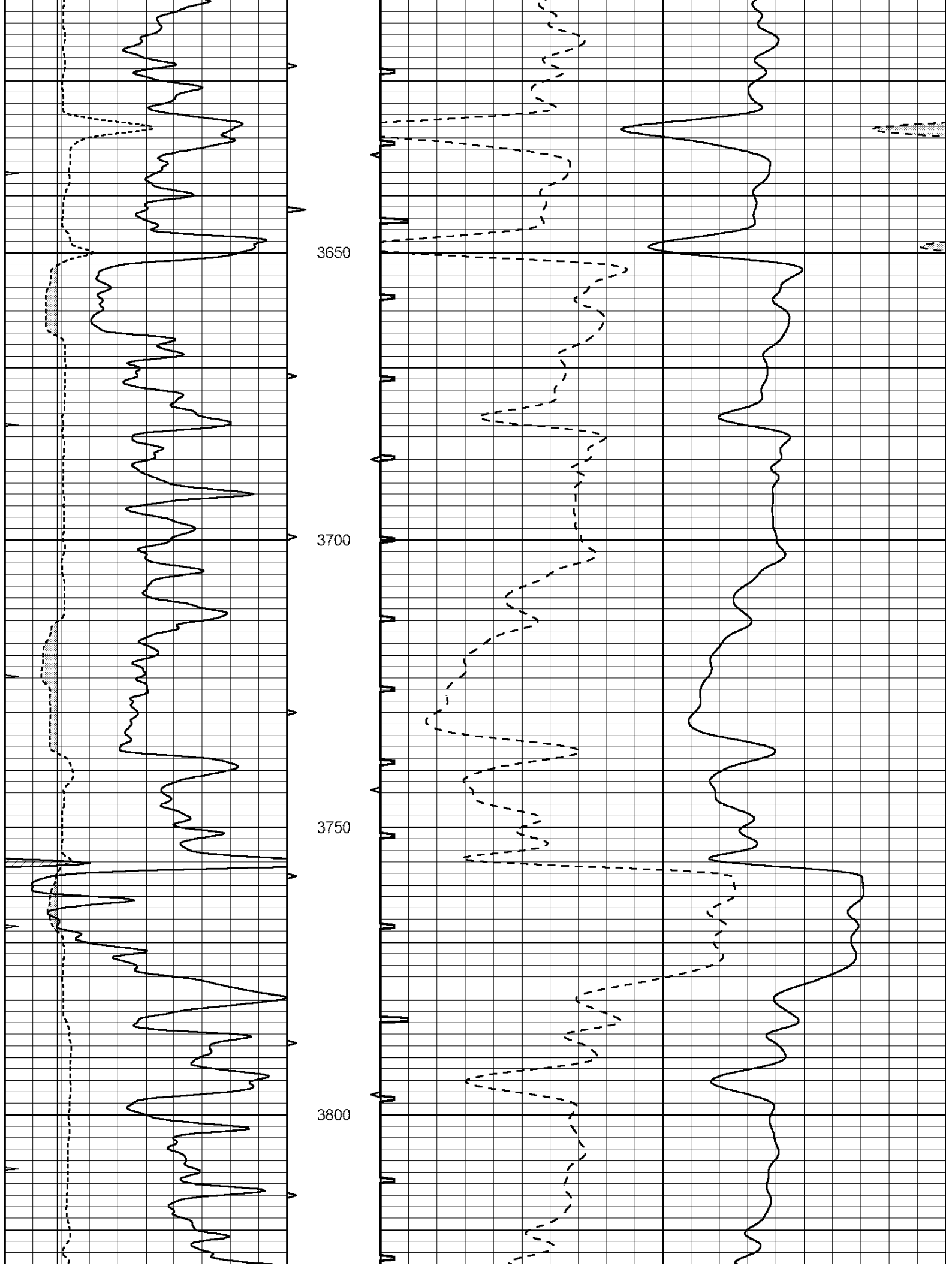
3450

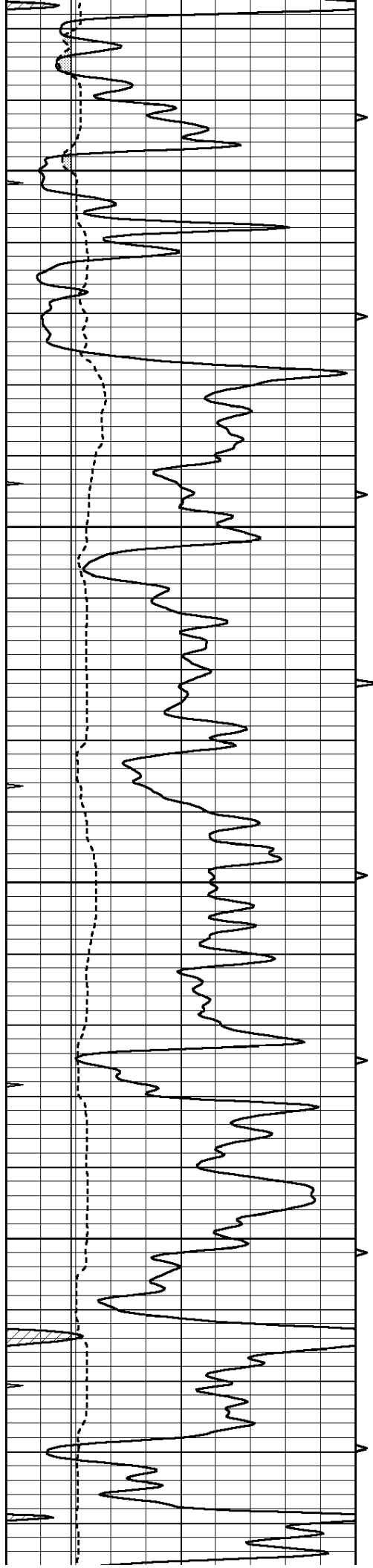
3500

3550

3600





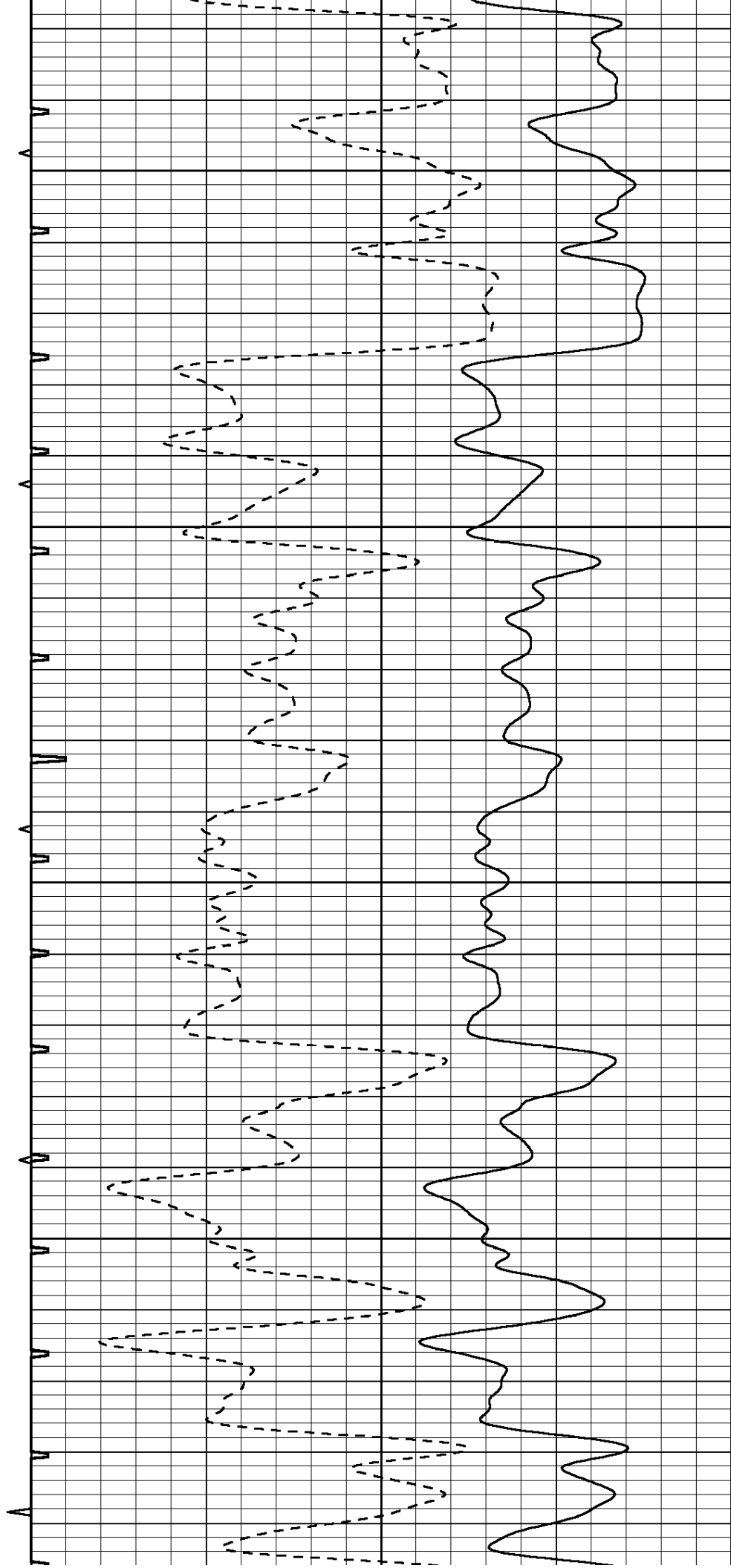


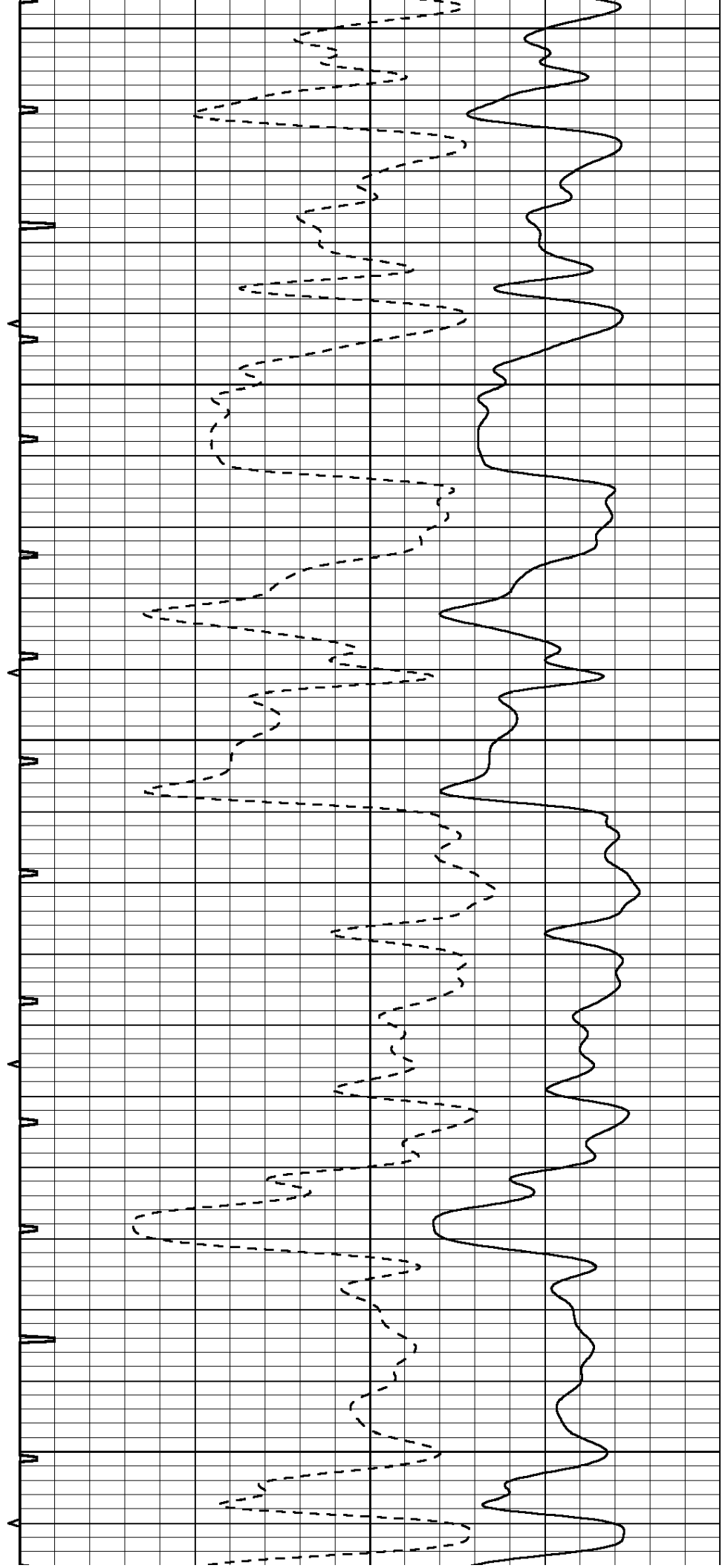
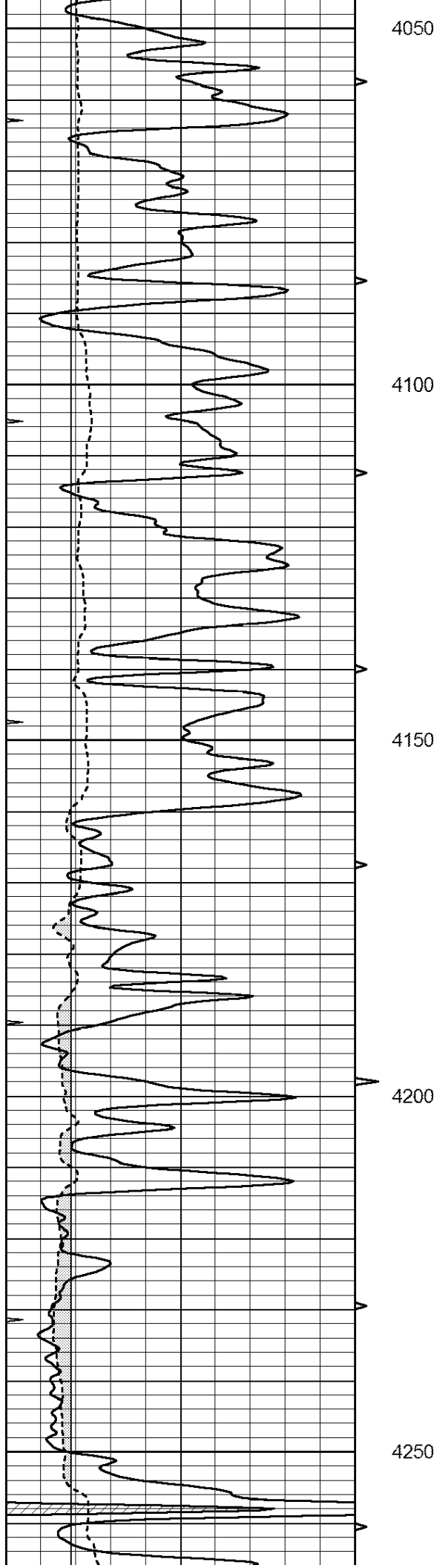
3850

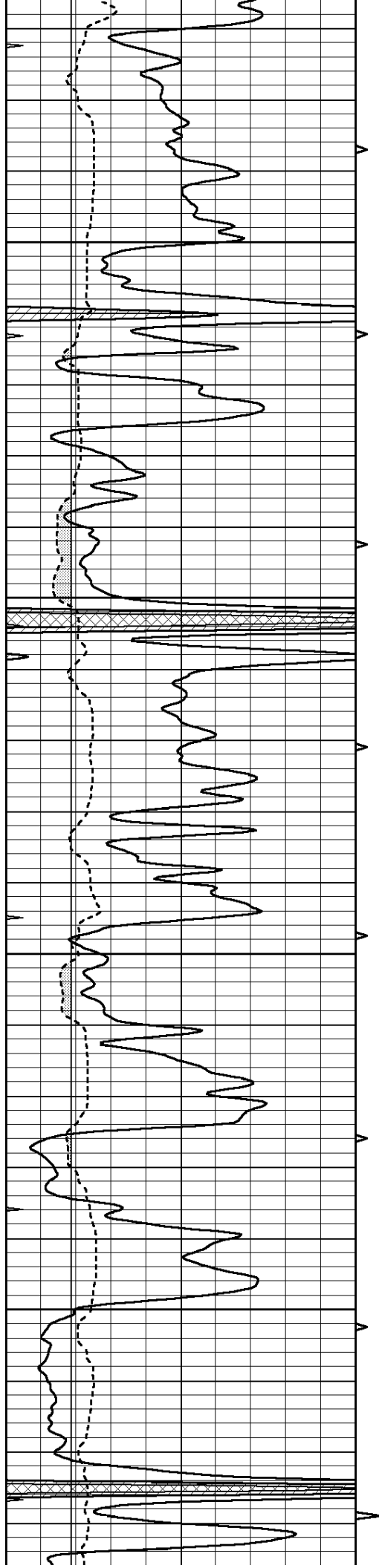
3900

3950

4000





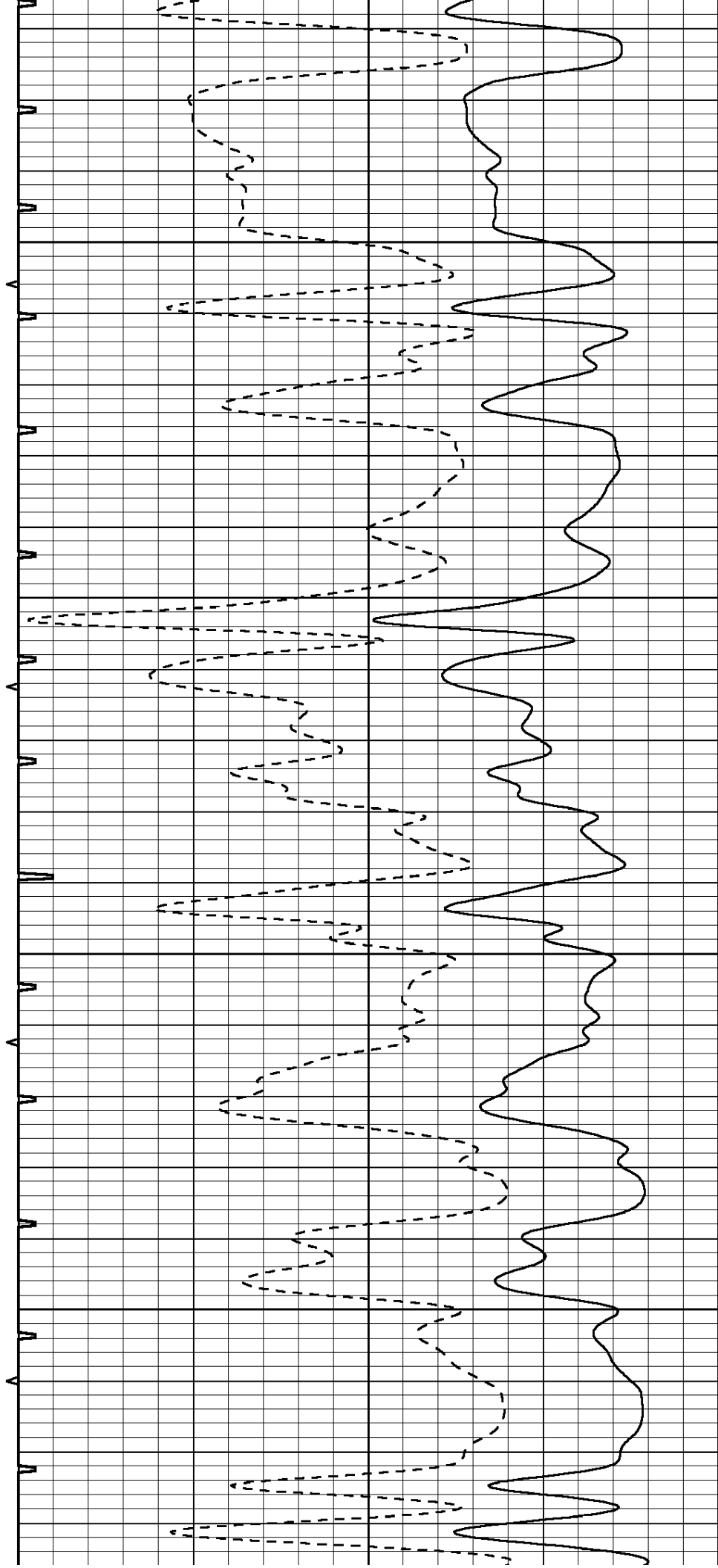


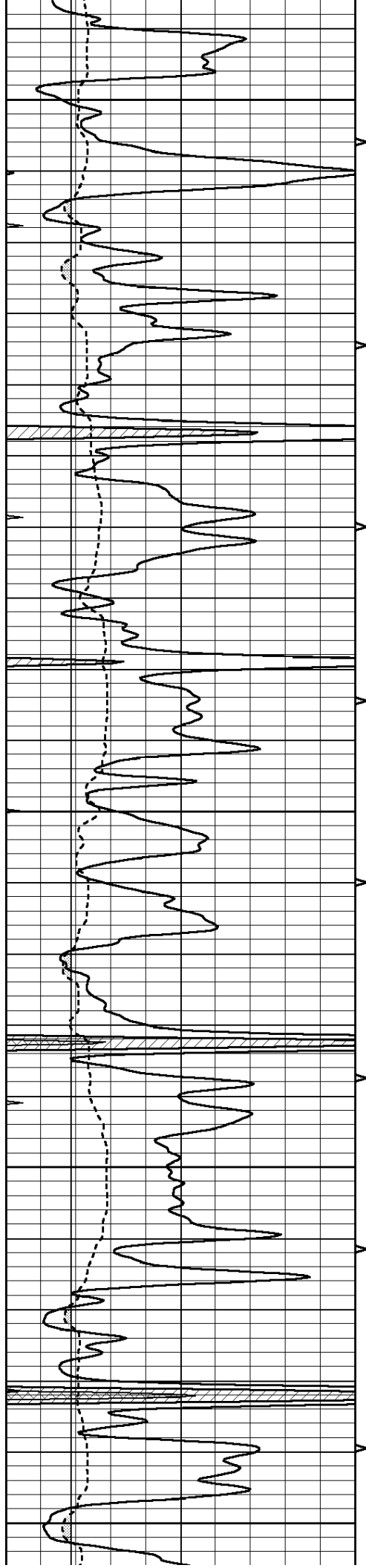
4300

4350

4400

4450





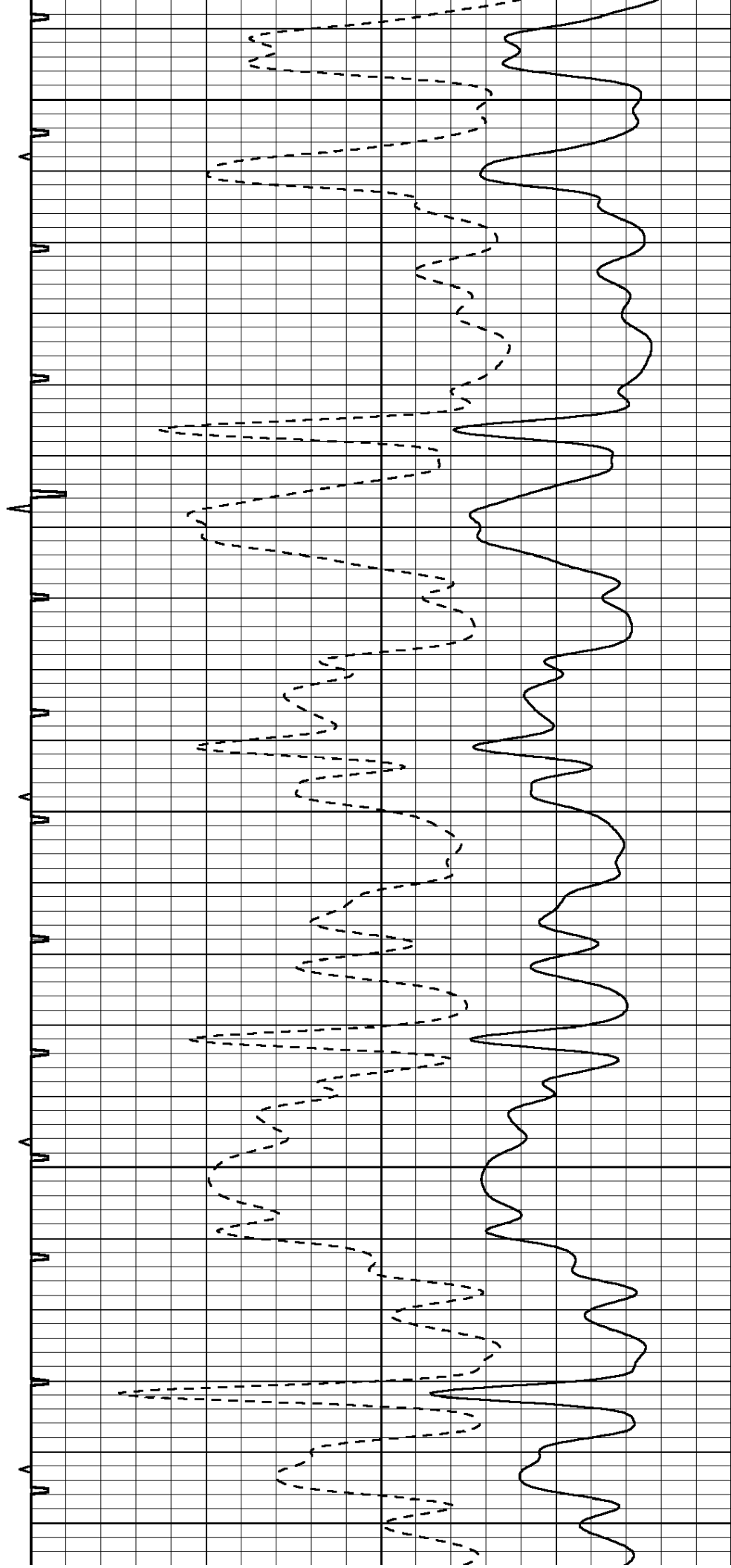
4500

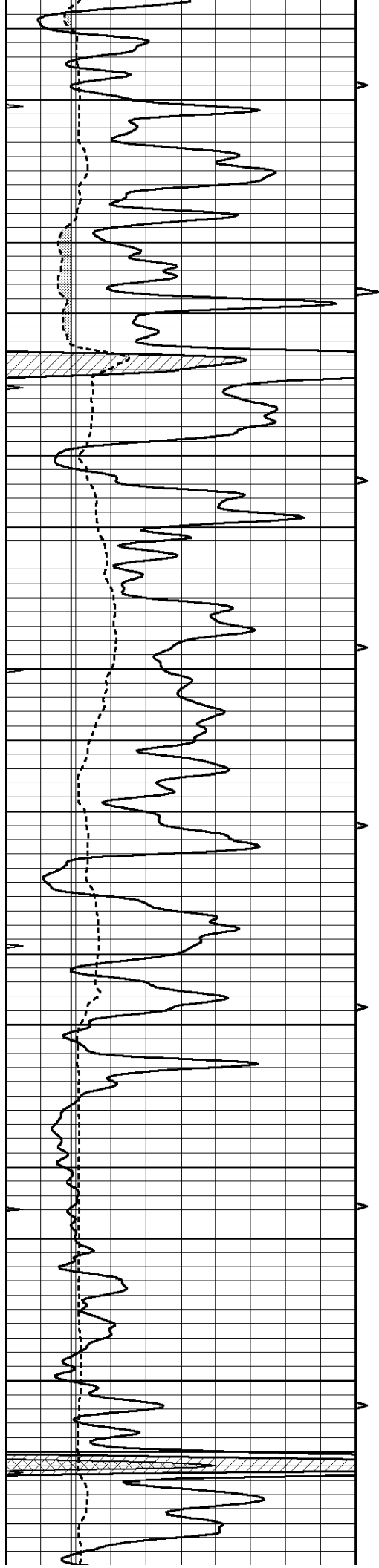
4550

4600

4650

4700



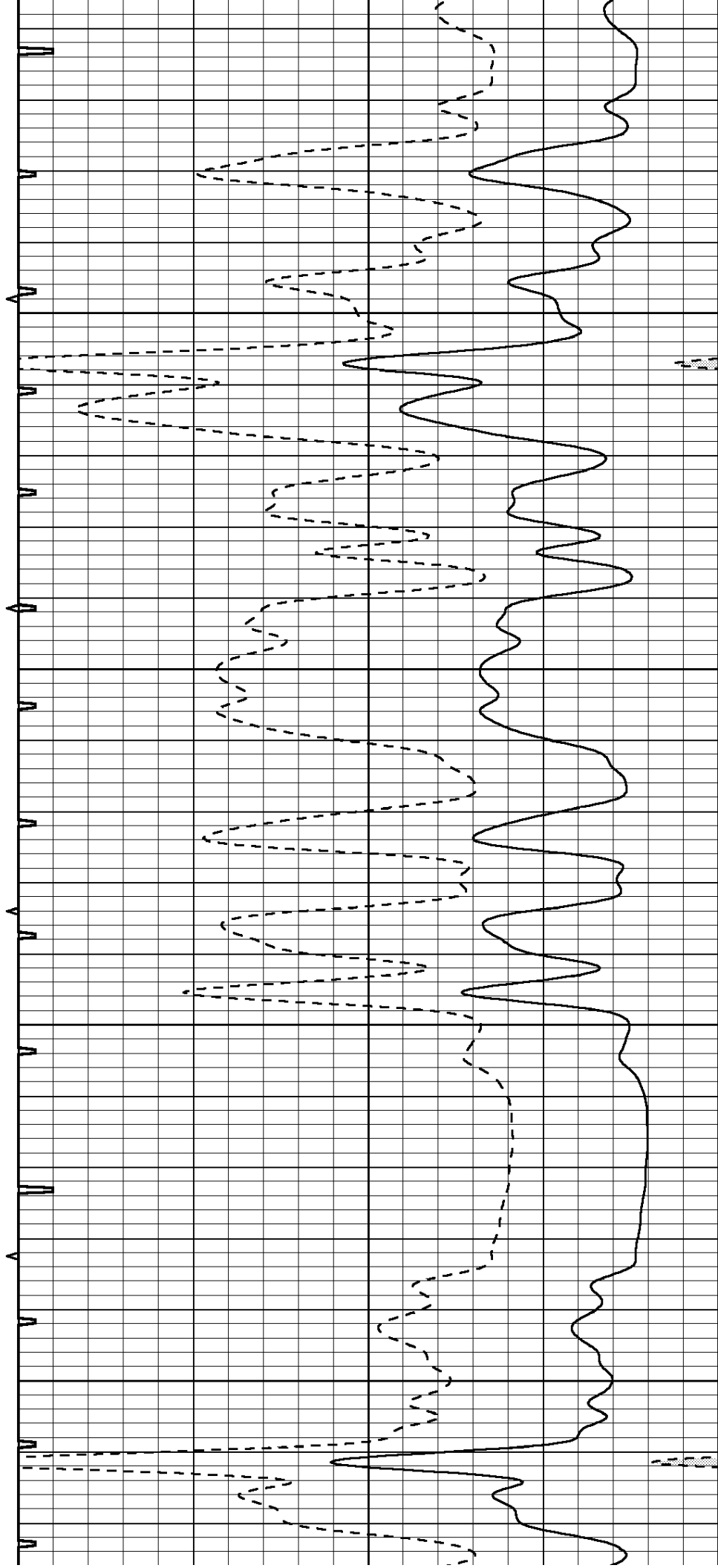


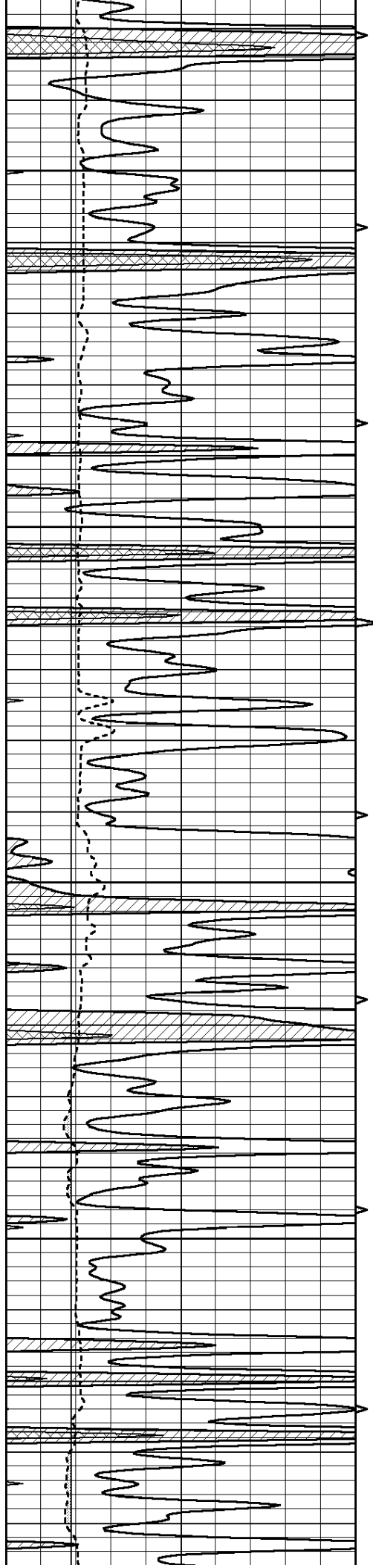
4750

4800

4850

4900



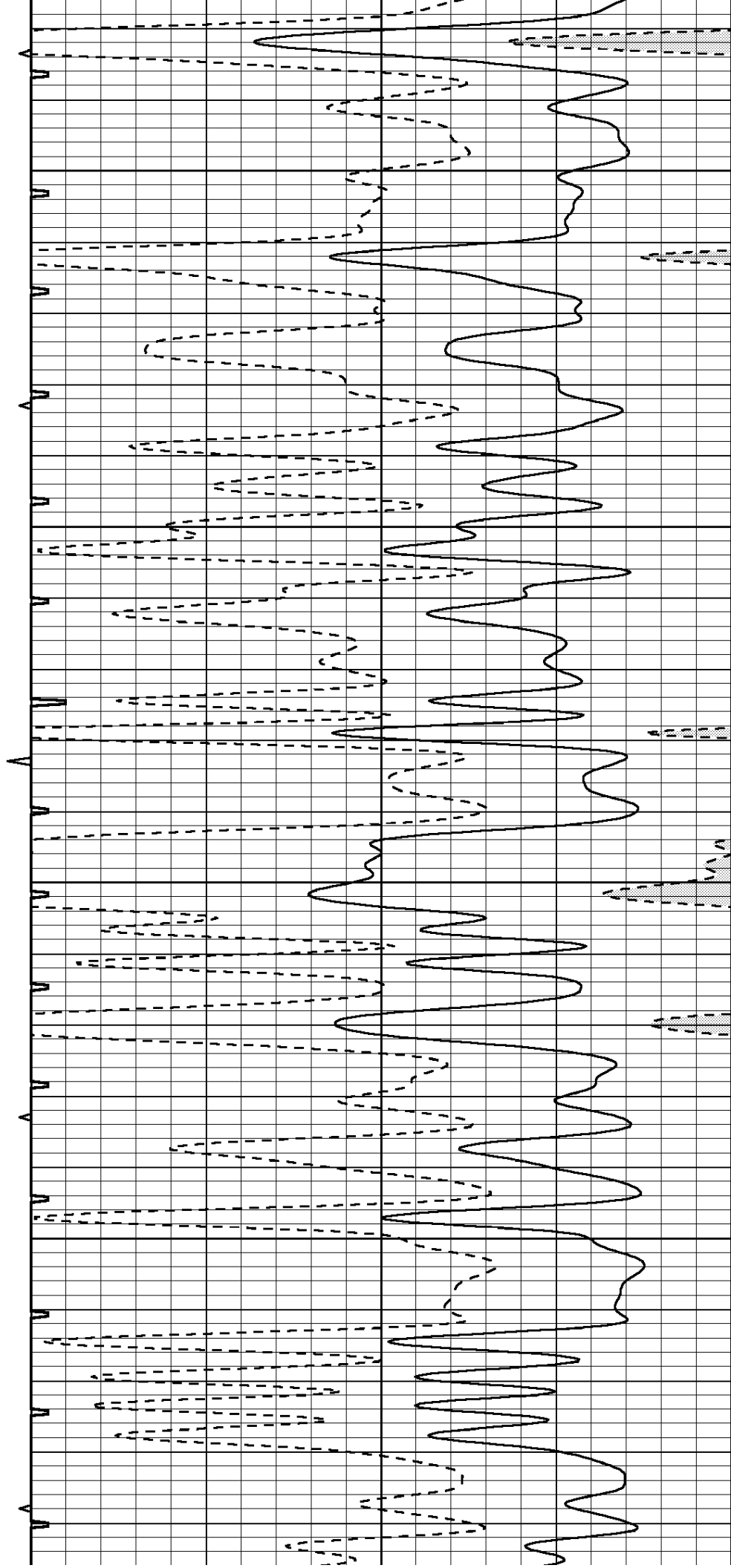


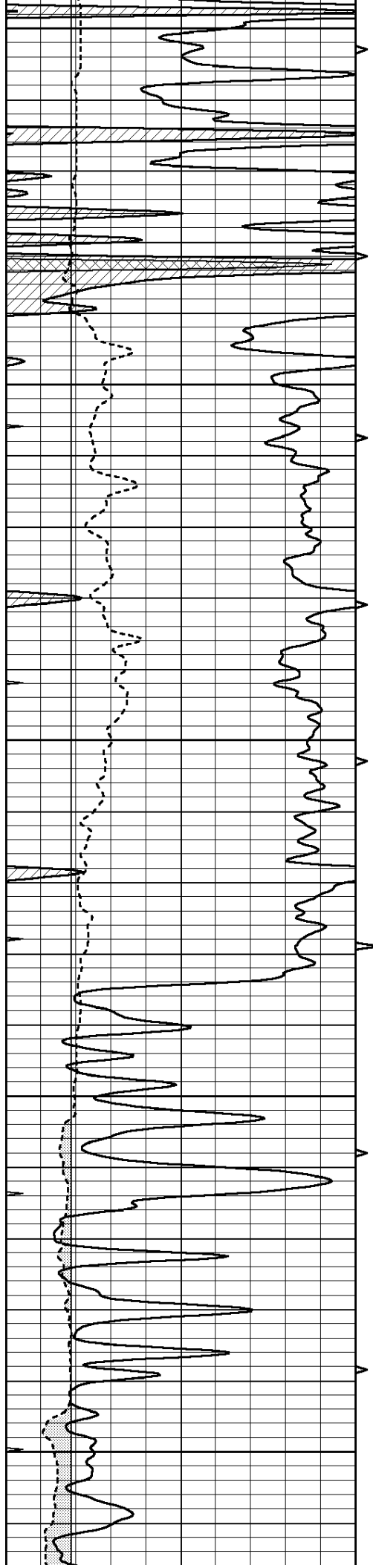
4950

5000

5050

5100





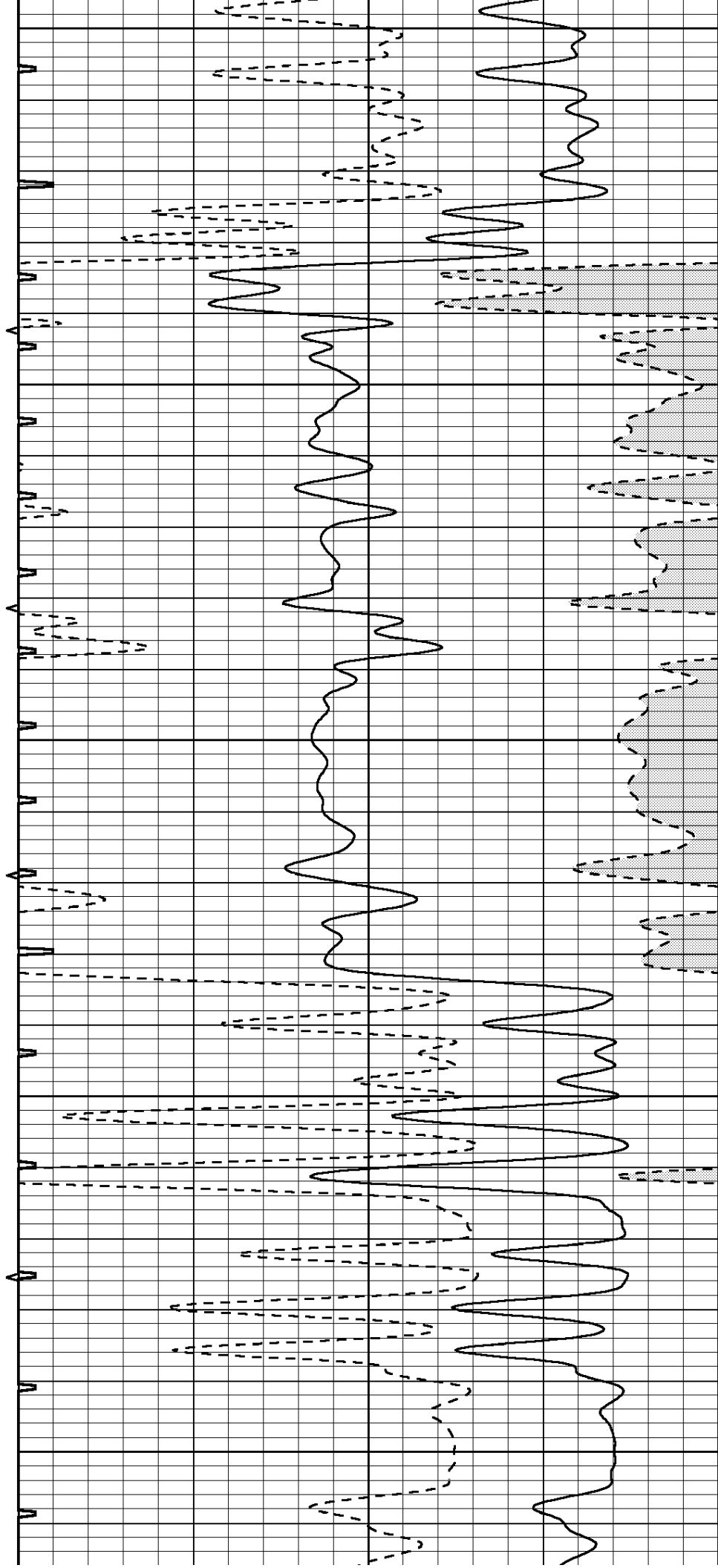
5150

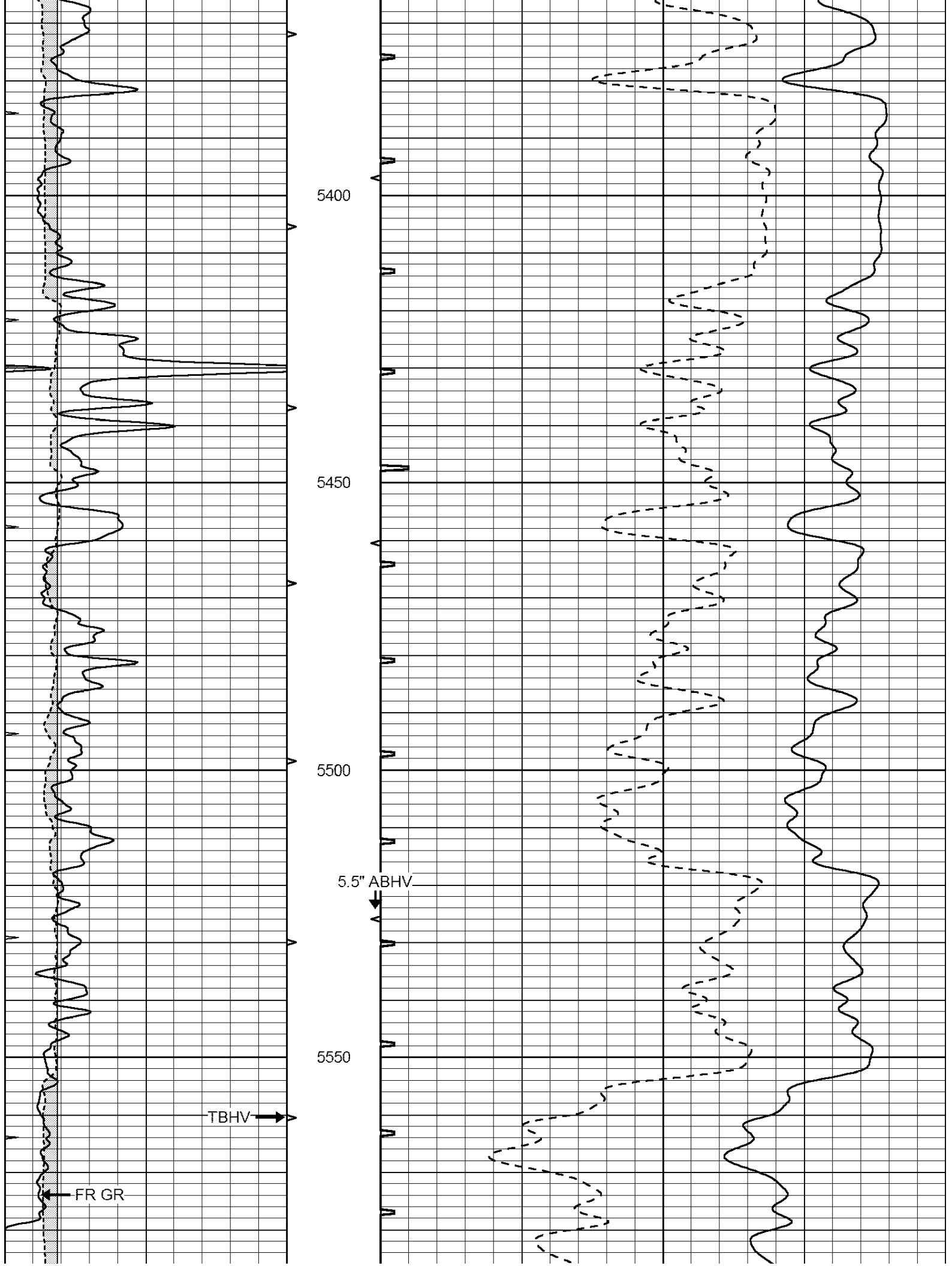
5200

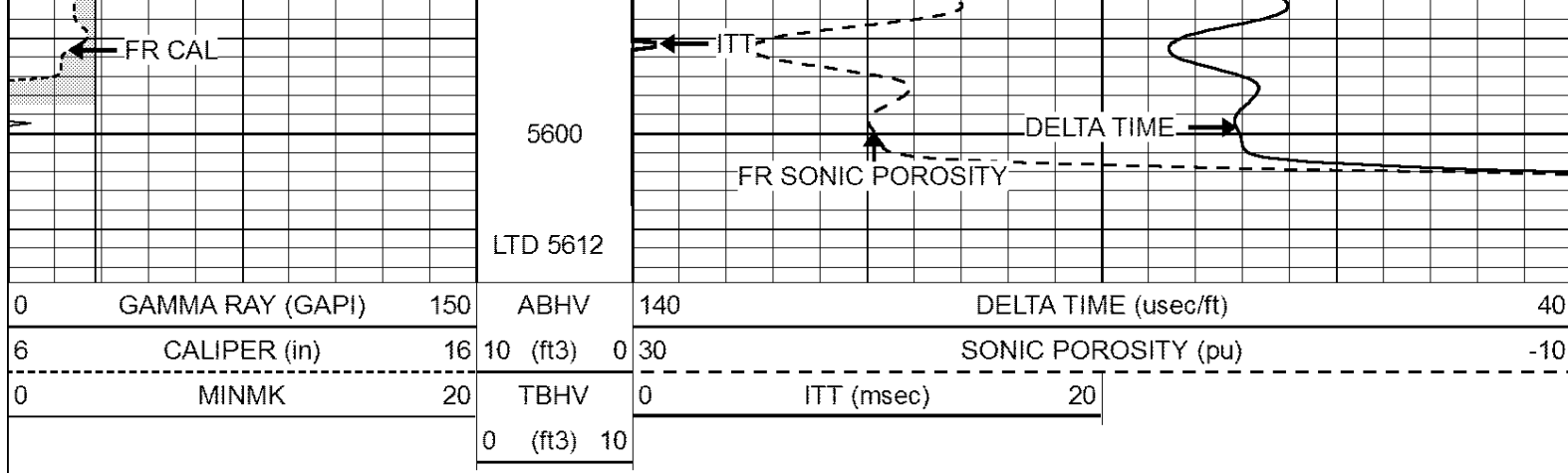
5250

5300

5350







SUPERIOR
Hays,
Kansas

REPEAT SECTION

Database File: 409518pe.db
 Dataset Pathname: pass5.4
 Presentation Format: slt
 Dataset Creation: Wed Sep 05 08:01:03 2012
 Charted by: Depth in Feet scaled 1:240

