

---

**WPX ENERGY ROCKY MOUNTAIN LLC-EBUS**

---

**KP 324-9  
KOKOPELLI  
Garfield County , Colorado**

**Cement Surface Casing**  
**23-Sep-2012**

**Post Job Report**

## The Road to Excellence Starts with Safety

Sold To #: 300721	Ship To #: 2950814	Quote #:	Sales Order #: 9808794
Customer: WPX ENERGY ROCKY MOUNTAIN LLC-EBUS		Customer Rep: Wilson, W.C.	
Well Name: KP		Well #: 324-9	API/UWI #: 05-045-21202
Field: KOKOPELLI	City (SAP): SILT	County/Parish: Garfield	State: Colorado
Lat: N 39.533 deg. OR N 39 deg. 32 min. 0.276 secs.		Long: W 107.567 deg. OR W -108 deg. 25 min. 59.549 secs.	
Contractor: NABORS 574		Rig/Platform Name/Num: NABORS 574	
Job Purpose: Cement Surface Casing			
Well Type: Development Well		Job Type: Cement Surface Casing	
Sales Person: MAYO, MARK		Srv Supervisor: ARNOLD, EDWARD	MBU ID Emp #: 439784

## Job Personnel

HES Emp Name	Exp Hrs	Emp #	HES Emp Name	Exp Hrs	Emp #	HES Emp Name	Exp Hrs	Emp #
ARNOLD, EDWARD John	8	439784	LAULAINEN, ROGER Edward	8	524413	SINCLAIR, DAN J	8	338784
VANALSTYNE, TROY L	8	420256						

## Equipment

HES Unit #	Distance-1 way	HES Unit #	Distance-1 way	HES Unit #	Distance-1 way	HES Unit #	Distance-1 way
10011429	60 mile	10567589C	60 mile	10713212	60 mile	11259882	60 mile
11360871	60 mile	11808829	60 mile				

## Job Hours

Date	On Location Hours	Operating Hours	Date	On Location Hours	Operating Hours	Date	On Location Hours	Operating Hours
9-23-12	8	3						

TOTAL	Total is the sum of each column separately							
-------	--	--	--	--	--	--	--	--

## Job

Formation Name	Job	Date	Time	Time Zone
Formation Depth (MD)	Top Bottom	Called Out	23 - Sep - 2012	08:30 MST
Form Type	BHST	On Location	23 - Sep - 2012	13:00 MST
Job depth MD	1450. ft	Job Depth TVD	1450. ft	Job Started
Water Depth		Wk Ht Above Floor	3. ft	Job Completed
Perforation Depth (MD)	From To	Departed Loc	23 - Sep - 2012	19:00 MST

## Well Data

Description	New / Used	Max pressure psig	Size in	ID in	Weight lbm/ft	Thread	Grade	Top MD ft	Bottom MD ft	Top TVD ft	Bottom TVD ft
-------------	------------	-------------------	---------	-------	---------------	--------	-------	-----------	--------------	------------	---------------

Sales/Rental/3<sup>rd</sup> Party (HES)

Description	Qty	Qty uom	Depth	Supplier
PLUG,CMTG,TOP,9 5/8,HWE,8.16 MIN/9.06 MA	1	EA		

## Tools and Accessories

Type	Size	Qty	Make	Depth	Type	Size	Qty	Make	Depth	Type	Size	Qty	Make
Guide Shoe					Packer					Top Plug	9.625	1	HES
Float Shoe					Bridge Plug					Bottom Plug			
Float Collar					Retainer					SSR plug set			
Insert Float										Plug Container	9.625	1	HES
Stage Tool										Centralizers			

## Miscellaneous Materials

Gelling Agt	Conc	Surfactant	Conc	Acid Type	Qty	Conc	%
Treatment Fld	Conc	Inhibitor	Conc	Sand Type	Size		Qty

## Fluid Data

Stage/Plug #: 1									
Fluid #	Stage Type	Fluid Name	Qty	Qty uom	Mixing Density lbm/gal	Yield ft3/sk	Mix Fluid Gal/sk	Rate bbl/min	Total Mix Fluid Gal/sk

Stage/Plug #: 1									
Fluid #	Stage Type	Fluid Name	Qty	Qty uom	Mixing Density lbm/gal	Yield ft <sup>3</sup> /sk	Mix Fluid Gal/sk	Rate bbl/min	Total Mix Fluid Gal/sk
1	Spacer		20.00	bbl	.	.0	.0	4	
2	Lead Cement	VERSACEM (TM) SYSTEM (452010)	220.0	sacks	12.3	2.38	13.75	6	13.75
3	Tail Cement	VERSACEM (TM) SYSTEM (452010)	160.0	sacks	12.8	2.11	11.75	6	11.75
4	Displacement		108.00	bbl	.	.0	.0	10	
Calculated Values		Pressures		Volumes					
Displacement	108	Shut In: Instant		Lost Returns	0	Cement Slurry	153.3	Pad	
Top Of Cement	SURFACE	5 Min		Cement Returns	25	Actual Displacement	108	Treatment	
Frac Gradient		15 Min		Spacers	20	Load and Breakdown		Total Job	281.3
Rates									
Circulating	RIG	Mixing	6	Displacement	10	Avg. Job			8
Cement Left In Pipe	Amount	46 ft	Reason	Shoe Joint					
Frac Ring # 1 @	ID	Frac ring # 2 @	ID	Frac Ring # 3 @	ID	Frac Ring # 4 @	ID		
The Information Stated Herein Is Correct				Customer Representative Signature					

*The Road to Excellence Starts with Safety*

<b>Sold To #:</b> 300721		<b>Ship To #:</b> 2950814		<b>Quote #:</b>		<b>Sales Order #:</b> 9808794	
<b>Customer:</b> WPX ENERGY ROCKY MOUNTAIN LLC-EBUS				<b>Customer Rep:</b> Wilson, W.C.			
<b>Well Name:</b> KP			<b>Well #:</b> 324-9			<b>API/UWI #:</b> 05-045-21202	
<b>Field:</b> KOKOPELLI		<b>City (SAP):</b> SILT		<b>County/Parish:</b> Garfield		<b>State:</b> Colorado	
<b>Legal Description:</b>							
<b>Lat:</b> N 39.533 deg. OR N 39 deg. 32 min. 0.276 secs.				<b>Long:</b> W 107.567 deg. OR W -108 deg. 25 min. 59.549 secs.			
<b>Contractor:</b> NABORS 574			<b>Rig/Platform Name/Num:</b> NABORS 574				
<b>Job Purpose:</b> Cement Surface Casing						<b>Ticket Amount:</b>	
<b>Well Type:</b> Development Well			<b>Job Type:</b> Cement Surface Casing				
<b>Sales Person:</b> MAYO, MARK			<b>Srvc Supervisor:</b> ARNOLD, EDWARD			<b>MBU ID Emp #:</b> 439784	

Activity Description	Date/Time	Cht #	Rate bbl/min	Volume bbl		Pressure psig		Comments
				Stage	Total	Tubing	Casing	
Call Out	09/23/2012 08:30							
Pre-Convoy Safety Meeting	09/23/2012 10:45							Including entire cement crew.
Crew Leave Yard	09/23/2012 11:00							
Arrive At Loc	09/23/2012 13:00							Rig still Running casing.
Assessment Of Location Safety Meeting	09/23/2012 15:05							Water; PH 7; KCL 250; So4 <200; Fe 0; Calcium 120; Chlorides 0; Temp 50; TDS 260.
Pre-Rig Up Safety Meeting	09/23/2012 15:10							Including entire cement crew.
Rig-Up Equipment	09/23/2012 15:15							1 Elite # 3; 1 660 bulk truck; 1 body load; 1 hard line to floor; 1 line to upright; 1 line to rig tank. 9.625" compact head.
Rig-Up Completed	09/23/2012 16:00							
Pre-Job Safety Meeting	09/23/2012 16:15							Including everyone on location.
Start Job	09/23/2012 16:39							TD 1450; TP 1425; SJ 46; OH 13 1/2"; Casing 9.625" 32.3# H-40; Mud 10.2 ppg.
Pump Water	09/23/2012 16:40		2	2			50.0	Fill lines with fresh water.
Test Lines	09/23/2012 16:42					3070.0		Good pressure test, no leaks.
Pump Spacer 1	09/23/2012 16:47		4	20			112.0	20 BBL fresh water spacer.
Activity Description	Date/Time	Cht	Rate bbl/min	Volume bbl		Pressure psig		Comments

Sold To # : 300721

Ship To # :2950814

Quote # :

Sales Order # :

9808794

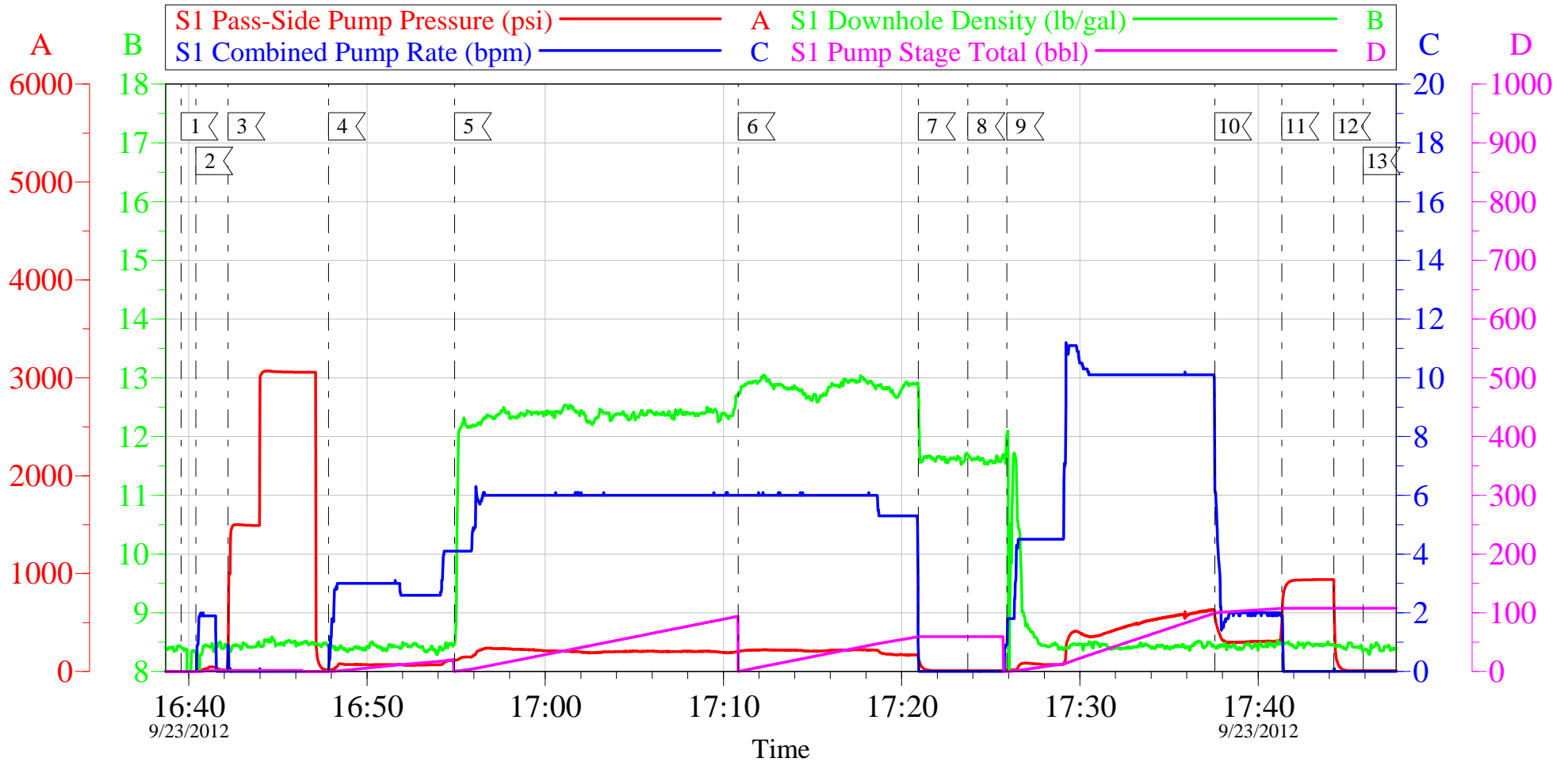
SUMMIT Version: 7.3.0040

Sunday, September 30, 2012 05:08:00

		#		Stage	Total	Tubing	Casing	
Pump Lead Cement	09/23/2012 16:54		8	93.2			206.0	220 sks Lead Cement, 12.3 ppg, 2.38 cf3, 13.75 gal/sk.
Pump Tail Cement	09/23/2012 17:10		8	60.1			206.0	160 sks Tail Cement, 12.8 ppg, 2.11 cf3, 11.75 gal/sk.
Shutdown	09/23/2012 17:20							
Drop Plug	09/23/2012 17:23							Plug left container.
Pump Displacement	09/23/2012 17:25		10	98			620.0	Fresh water displacement.
Slow Rate	09/23/2012 17:37		2	10			354.0	Slow rate 10 BBL's prior to bumping the plug. 25 BBL's Of good cement to surface.
Bump Plug	09/23/2012 17:41				108		880.0	Bumped plug, took 500 PSI over.
Check Floats	09/23/2012 17:44							Floats held, .75 BBL back
End Job	09/23/2012 17:45							
Pre-Rig Down Safety Meeting	09/23/2012 17:50							Including entire cement crew.
Rig-Down Equipment	09/23/2012 17:55							
Rig-Down Completed	09/23/2012 18:45							
Pre-Convoy Safety Meeting	09/23/2012 18:50							Including entire cement crew.
Other	09/23/2012 19:00							Thank You for using Halliburton. Ed Arnold and Crew.
Crew Leave Location	09/23/2012 19:00							Crew leave location for Service Center or another location.

# WPX - KP 324-9

9 5/8" SURFACE



## Local Event Log

1 START JOB	16:39:34	2 FILL LINES	16:40:24	3 TEST LINES	16:42:12
4 H2O SPACER	16:47:50	5 LEAD CEMENT	16:54:54	6 TAIL CEMENT	17:10:50
7 SHUT DOWN	17:20:56	8 DROP PLUG	17:23:43	9 H2O DISPLACEMENT	17:25:54
10 SLOW RATE	17:37:35	11 BUMP PLUG	17:41:20	12 CHECK FLOATS	17:44:15
13 END JOB	17:45:54				

Customer: WPX  
Well Description: KP 324-9  
Company Rep: MATT HUDSON

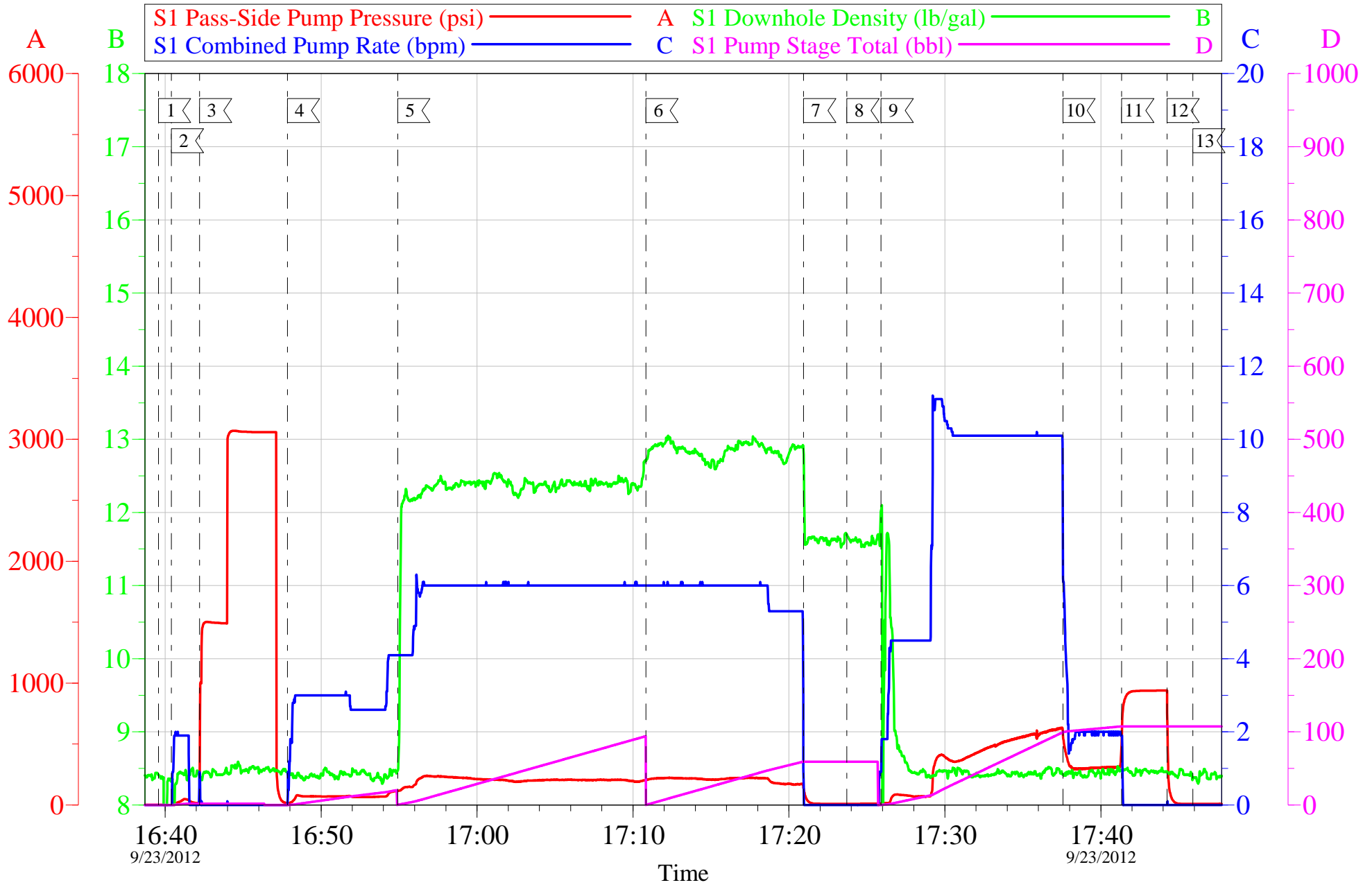
Job Date: 23-Sep-2012  
Job Type: SURFACE  
Cement Supervisor: ED ARNOLD

Sales Order #: 9808794  
ADC Used: YES  
Elite #3: DAN SINCLAIR

OptiCem v6.4.10  
23-Sep-12 17:55

# WPX - KP 324-9

9 5/8" SURFACE



Customer: WPX	Job Date: 23-Sep-2012	Sales Order #: 9808794
Well Description: KP 324-9	Job Type: SURFACE	ADC Used: YES
Company Rep: MATT HUDSON	Cement Supervisor: ED ARNOLD	Elite #3: DAN SINCLAIR

OptiCem v6.4.10  
23-Sep-12 17:56



# Water Analysis Report

Company:	WPX	Date:	9/23/2012
Submitted by:	ED ARNOLD	Date Rec.:	9/23/2012
Attention:	J.TROUT	S.O.#	9808794
Lease	KP	Job Type:	SURFACE
Well #	324-9		

Specific Gravity	MAX	1
pH	8	7
Potassium (K)	5000	250 Mg / L
Calcium (Ca)	500	120 Mg / L
Iron (FE2)	300	0 Mg / L
Chlorides (Cl)	3000	0 Mg / L
Sulfates (SO <sub>4</sub> )	1500	<200 Mg / L
Chlorine (Cl <sub>2</sub> )		0 Mg / L
Temp	40-80	50 Deg
Total Dissolved Solids		260 Mg / L

Respectfully: ED ARNOLD

Title: CEMENTING SUPERVISOR

Location: Grand Junction, CO

NOTICE: This report is limited to the described sample tested. Any person using or relying on this report agrees that Halliburton shall not be liable for any loss or damage whether due to act or omission resulting from such report or its use



<b>Sales Order #:</b> 9808794	<b>Line Item:</b> 10	<b>Survey Conducted Date:</b> 9/23/2012
<b>Customer:</b> WPX ENERGY ROCKY MOUNTAIN LLC-EBUS		<b>Job Type (BOM):</b> CMT SURFACE CASING BOM
<b>Customer Representative:</b> MATT HUDSON		<b>API / UWI: (leave blank if unknown)</b> 05-045-21202
<b>Well Name:</b> KP		<b>Well Number:</b> 324-9
<b>Well Type:</b> Development Well	<b>Well Country:</b> United States of America	
<b>H2S Present:</b> No	<b>Well State:</b> Colorado	<b>Well County:</b> Garfield

Dear Customer,

We hope that you were satisfied with the service quality of this job performed by Halliburton. It is the aim of our management and service personnel to deliver equipment and service of a standard unmatched in the service sector of the energy industry.

Please take the time to let us know if our performance met with your satisfaction. Please be as critical as possible to ensure we constantly improve our service. Your comments are of great value to us and are intended for the exclusive use of Halliburton.

### CUSTOMER SATISFACTION SURVEY

CATEGORY	CUSTOMER SATISFACTION RESPONSE	
Survey Conducted Date	The date the survey was conducted	9/23/2012
Survey Interviewer	The survey interviewer is the person who initiated the survey.	EDWARD ARNOLD (HX46731)
Customer Participation	Did the customer participate in this survey? (Y/N)	Yes
Customer Representative	Enter the Customer representative name	MATT HUDSON
HSE	Was our HSE performance satisfactory? Circle Y or N	Yes
Equipment	Were you satisfied with our Equipment? Circle Y or N	Yes
Personnel	Were you satisfied with our people? Circle Y or N	Yes
Customer Comment	Customer's Comment	

<b>CUSTOMER SIGNATURE</b>
---------------------------

<b>Sales Order #:</b> 9808794	<b>Line Item:</b> 10	<b>Survey Conducted Date:</b> 9/23/2012
<b>Customer:</b> WPX ENERGY ROCKY MOUNTAIN LLC-EBUS		<b>Job Type (BOM):</b> CMT SURFACE CASING BOM
<b>Customer Representative:</b> MATT HUDSON		<b>API / UWI: (leave blank if unknown)</b> 05-045-21202
<b>Well Name:</b> KP		<b>Well Number:</b> 324-9
<b>Well Type:</b> Development Well	<b>Well Country:</b> United States of America	
<b>H2S Present:</b> No	<b>Well State:</b> Colorado	<b>Well County:</b> Garfield

### KEY PERFORMANCE INDICATORS

General	
<b>Survey Conducted Date</b> The date the survey was conducted	9/23/2012

Cementing KPI Survey	
<b>Type of Job</b> Select the type of job. (Cementing or Non-Cementing)	0
<b>Select the Maximum Deviation range for this Job</b> What is the highest deviation for the job you just completed? This may not be the maximum well deviation.	Vertical
<b>Total Operating Time (hours)</b> Total Operating Hours Including Rig-up, Pumping, Rig-down. Enter in decimal format.	3
<b>HSE Incident, Accident, Injury</b> HSE Incident, Accident, Injury. This should be recordable incidents only.	No
<b>Was the job purpose achieved?</b> Was the job delivered correctly as per customer agreed design?	Yes
<b>Operating Hours (Pumping Hours)</b> Total number of hours pumping fluid on this job. Enter in decimal format.	1.5
<b>Customer Non-Productive Rig Time (hrs)</b> Lost time due to Halliburton in the start, execution, or completion of an ordered service or product, or delays in a follow-on service. Enter in decimal format. 0 if none.	0
<b>Type of Rig Classification Job Was Performed</b> Type Of Rig (classification) Job Was Performed On	Drilling Rig (Portable)
<b>Number Of JSAs Performed</b> Number Of Jsas Performed	5
<b>Number of Unplanned Shutdowns</b> Unplanned shutdown is when injection stops for any period of time.	0
<b>Was this a Primary Cement Job (Yes / No)</b>	Yes

<b>Sales Order #:</b> 9808794	<b>Line Item:</b> 10	<b>Survey Conducted Date:</b> 9/23/2012
<b>Customer:</b> WPX ENERGY ROCKY MOUNTAIN LLC-EBUS		<b>Job Type (BOM):</b> CMT SURFACE CASING BOM
<b>Customer Representative:</b> MATT HUDSON		<b>API / UWI: (leave blank if unknown)</b> 05-045-21202
<b>Well Name:</b> KP		<b>Well Number:</b> 324-9
<b>Well Type:</b> Development Well	<b>Well Country:</b> United States of America	
<b>H2S Present:</b> No	<b>Well State:</b> Colorado	<b>Well County:</b> Garfield

Primary Cement Job= Casing job, Liner job, or Tie-back job.	
<b>Did We Run Wiper Plugs?</b> Did We Run Top And Bottom Casing Wiper Plugs?	Top
<b>Mixing Density of Job Stayed in Designed Density Range (0-100%)</b> Density Range defined as +/- .20 ppg. Calculation: Total BBLs cement mixed at designed density divided by total BBLs of cement multiplied by 100	98
<b>Was Automated Density Control Used?</b> Was Automated Density Control (ADC) Used ?	Yes
<b>Pump Rate (percent) of Job Stayed At Designed Pump Rate</b> Pump Rate range defined as +/- 1bbl/min. Calculation: Total BBLs of fluid pumped at the designed rate divided by Total BBLs of fluid pumped, multiplied by 100	99
<b>Nbr of Remedial Sqz Jobs Rqd - Competition</b> Number Of Remedial Squeeze Jobs Required After Primary Job Performed By Competition	0
<b>Nbr of Remedial Plug Jobs Rqd - HES</b> Number Of Remedial Plug Jobs Needed After Primary Plug Pumped By HES	0
<b>Nbr of Remedial Sqz Jobs Rqd - HES</b> Number Of Remedial Squeeze Jobs Required After Primary Job Performed By HES	0